

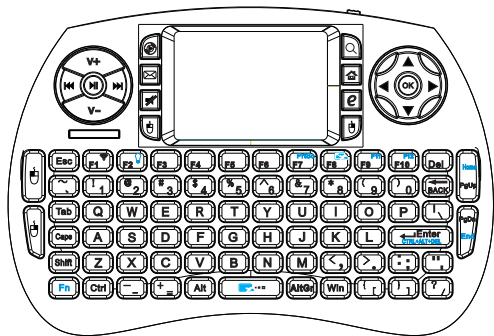
Mini Bluetooth Keyboard

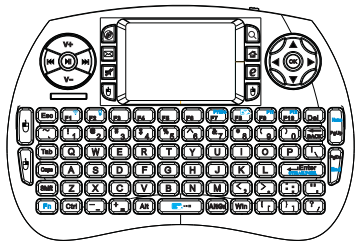
迷你蓝牙键盘

(KP-810-21BTL)

instructions

使用指南

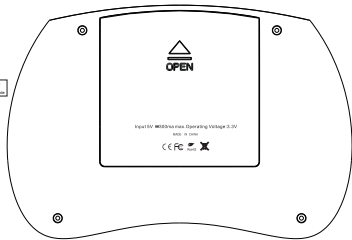




- open players
- open mail box
- mute
- mouse left
- open searching
- open my computer
- open the browser home page
- mouse right



FN+Lock Selection
Adjustable mouse speed
Two speed can be adjustable



Power Switch



FN+ Touch the board the scrollbar
look through the web

Safety Precautions

Safety Matters

To avoid injury, death of personnel or damage to the equipment the operator must refer to the explanations in this User's Manual

Battery: There is a lithium-ion rechargeable battery in this device. Don't water this device, or put it in a humid environment for a long time or the device will be damaged.

Attention to traffic safety

(CAR PC): Do not use the device while driving. When you want to use it, please park your car.

In vicinity of dangerous goods to be shut down

In gas station and close to fuel and chemical agents and other hazardous materials areas, please turn the device off.

Accessories

Only use factory specified parts. Please use the supplied travel charging cable. The use of other charging devices may be dangerous.

Overview

This is a wonderful combo, Mini Bluetooth QWERTY keyboard, TouchPad combo, with USB interface Adapter. For the lecturer, sales manager, presenter, from within a 30' radius make a presentation and operate PC Bluetoothly. Change slides and screen options, write on the screen, emphasize words and objects just by using this wireless Mini Keyboard and Mouse with Touch Pad.

Introduction

Product overview

Touchpad

This product was added to the innovative function Of the mouse wheel,when you press the Fn button With your fingers Touch anywhere in the sliding region,can facilitate the realization of the mouse wheel functions.This human design,it can be easier for to browse the web better,edit documents.

Auto sleep and wake feature

The keyboard also features an auto sleep and auto wake mode.If there is a long period of inactivity,the keyboard will automatically go into a sleep mode. During the sleep mode,the user can wake the unit up by pressing any key.

Interference

After finishing using the keyboard,push the switch to the off position.This turns off the power,of the keyboard.The USB receiver should be plugged out from the PC and then inserted back in the keyboard so it is being kept safely.

Charging the battery(Only for Configure A)

The device with built-in lithium-ion battery,please use only approved data lines and chargers. Fully charge the unit before operating for the first time.This device can be used when charging, but will extend the charging time; When the battery is low,the low-voltage light will flash to warn the user.The unit will automatically turn off the battery has been depleted.

Notes : This product has the configuration of A and B configuration can choose

Configure A: lithium battery version, this version built in rechargeable lithium battery, additional charge USB line.

Configure B: Install AAA* 2 battery, this version does not support the charging function.

Appendix

Technical parameters

Specification

Measurements(LxWxH): 146.8x97.5x19mm

Weight(grams): 110g

Operational Range: up to 10 meters

Transmit power: +5db Max

Operation voltage: 3.3V

Operation current: <50mA

Charging current: <300mA

Sleep current: <1mA

Computer system requirements

Windows

Mac OS

Android/iOS OS

Maintenance

Do not attempt to disassemble the device or replace rechargeable battery. Doing so will void the warranty. The battery will discharge if stored for a long period of time without usage.

Use the specified charger. Disconnect the device after the battery has been fully charged. Overcharging the battery.

Do not expose the device in extreme heat or cold. Extreme temperatures will cause the life span of the battery to shorten.

Use only a damp cloth with mild soap to clean the device. Solvents and other cleaning agents may cause damage to the device.

Troubleshooting

Below are some basic troubleshooting scenarios for the device. Please contact support from the place of purchase if you are unable to resolve any issue with the device. Problem Possible issue Solution

Pairing and establishing connection with computer .

Windows XP/2000

Let's take Microsoft Bluetooth Software as an example to describe Bluetooth Search, Pairing and Connection, other Bluetooth software please refer to its own user manual.

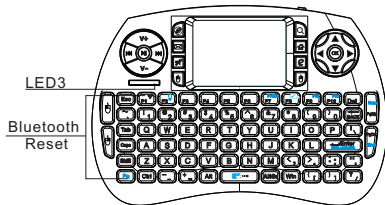
1. Insert Bluetooth adaptor into any vacant USB port on your computer, please be patient to wait system search and install new hard driver. Then bluetooth icon will appear on the taskbar.

If your computing device has integrated bluetooth receiver refer to the user manual to enable that receiver.



Bluetooth icon

2. Turn on unit by moving the power switch to ON, press key BLUETOOTH RESET indicated till LED3 blink then release it (about 2-5 seconds), that means your unit is ready and searching other Bluetooth device for pairing.



Note: during operation, do not press this key, or your bluetooth keyboard will be disconnected from your computer

3. Click "Start", "Control Panel" (make sure you're in Classic View), and then double-click Bluetooth Devices. Select "Add".

4. In the Add Bluetooth Device Wizard, select the "My device is set up and ready to be found check box", and then click "Next".

5. After icon of "Bluetooth Keyboard" appear, click "Bluetooth Keyboard", and then click "Next".



6. When the wizard asks you which passkey you want to use, click "Choose a passkey for me". Then click "Next".

7. After you are prompted to enter your passkey, please type the passkey on Bluetooth Keyboard, and then press Enter. You also can choose no passkey to go next step.

PLEASE DO REMEMBER TO USE THE KEY OF BLUETOOTH KEYBOARD WHEN INPUT PASSKEY.

8. In the final page of the wizard, click Finish, it maybe take a few seconds for new hardware driver installation before click finish. So please be patient.

Your Bluetooth Keyboard should now be successfully paired with your PC and ready to use.

9. LED3 will go out when connection is established successfully.

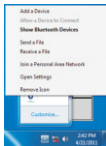
NOTE: keyboard functions WILL NOT work until a bluetooth connection with the computing device is completed.

Windows 7 (Bluetooth Receiver is not included)

Plug bluetooth receiver into any vacant USB port on your computer, please be patient to wait the system recognize your device, it maybe take several minutes. When new hardware has finished driver installation, an icon will appear in the task bar.



Right click icon of bluetooth, select "Add a Device"



An window like below will popup indicating that system is search a devie to add...



Turn keyboard on by sliding the power switch to ON, LED3 will flash one time, then press key "bluetooth reset" till LED3 flash. And Bluetooth Keyboard will appear in the window. Select it and click "Next"



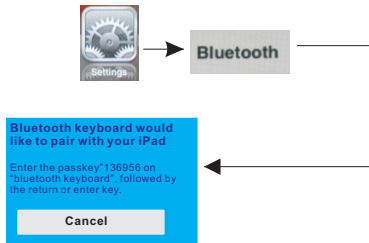
Then you will be required to input a pass code for your device, please do type the code with bluetooth keyboard, then press Enter



NOTE: 1. Do not tap key "Bluetooth Reset" or you will disconnect its connection during operation.
2. keyboard functions WILL NOT work until a bluetooth connection with the computing device is completed.

CONNECT TO iPad/ iPhone

1. Turn your Bluetooth Keyboard on by switch button to on, press Bluetooth Reset key till LED3 flash.
2. Turn on your iPhone, tap "settings" => "Bluetooth", then your iPhone will search the other Bluetooth for pairing, "Bluetooth keyboard" will be listed when system find your Bluetooth keyboard.
3. Tap "Bluetooth keyboard", then system will install driver and prompt you to input pass code you must type the pass code with your Bluetooth keyboard.
4. When it is connected to your iPhone, Bluetooth keyboard will appear in the list.
5. For re-connect to your iPhone: turn your Bluetooth keyboard on, then go to "Bluetooth" device list, and tap " Bluetooth keyboard", then connection will be built again.



Connect to other smart mobile with Android O.S

1. Activate bluetooth device of your mobile and make sure it is searchable and be able to pair
2. Tap search menu to make it in searching state.
3. Turn on keyboard and press **bluetooth Reset** key till LED3 flash

4. Icon of **Bluetooth Keyboard** will appear in the list when bluetooth keyboard is found, tap this icon for pairing

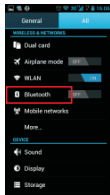
5. Tap “Bluetooth Keyboard”, then system will install driver and prompt you to input pass code you must type the pass code with your bluetooth keyboard.

- Please be noted that your mobile can't be connected and can't be used if your mobile have no HID profile or contact our service dept.

- Please be noted if the android device requests to type in its codes on keyboard, please follow and disregard above instructions.



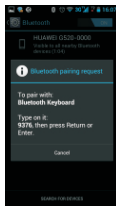
1. Click "Settings"



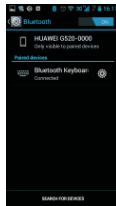
2. Click "Bluetooth"



3. Turn on "Bluetooth", Search for devices



4. Enter Keyboard "9376", Press "Enter"



5. Connected successfully

<p>unit does not respond</p>	<ol style="list-style-type: none"> 1.Low battery power. 2.Unit is not turned on. 	<ol style="list-style-type: none"> 1.Configure A:charge the device for at least 15minutes.Configure B:Replacement of the AAA.2 battery 2.Check if the switch selected to the“ON”position.
<p>Keyboard can not establish a connection to the receiver.</p>	<ol style="list-style-type: none"> 1.The receiver may not be inserted correctly 	<ol style="list-style-type: none"> 1.Disconnect and reconnect the receiver to the USB port.
<p>The mouse pointer moves erratically and/or unresponsive.</p>	<ol style="list-style-type: none"> 1.Device may not be within optimal range of the receiver 2.Low voltage 3.Dust or oil on the touching. 	<ol style="list-style-type: none"> 1.Bring the unit closer to the receiver. 2.Please recharge(for Configure A) or replace the battery(for Configure B) 3.Clean the touchpad with a damp cloth.
<p>The unit does not charge (only for Configure A)</p>	<ol style="list-style-type: none"> 1.Defective battery. 2.Check connections 	<ol style="list-style-type: none"> 1.Conntact your local dealer for replacements. 2.Verify if the device is securely connected to the charger.

This device complies with part 15 of the FCC Rules. Operation is subject to the following two conditions: (1) This device may not cause harmful interference, and (2) this device must accept any interference received, including interference that may cause undesired operation.

Any Changes or modifications not expressly approved by the party responsible for compliance could void the user's authority to operate the equipment.

Note: This equipment has been tested and found to comply with the limits for a Class B digital device, pursuant to part 15 of the FCC Rules. These limits are designed to provide reasonable protection against harmful interference in a residential installation. This equipment generates uses and can radiate radio frequency energy and, if not installed and used in accordance with the instructions, may cause harmful interference to radio communications.

However, there is no guarantee that interference will not occur in a particular

installation. If this equipment does cause harmful interference to radio or television reception, which can be determined by turning the equipment off and on, the user is encouraged to try to correct the interference by one or more of the following measures:

- Reorient or relocate the receiving antenna.
- Increase the separation between the equipment and receiver.
- Connect the equipment into an outlet on a circuit different from that to which the receiver is connected.
- Consult the dealer or an experienced radio/TV technician for help.