

# iCube Instruction Guide



# Table of Contents

---

Your iCube .....	1
Practical Solutions to Everyday Problems .....	2
Using the iCube Guide .....	3
Getting started.....	4
Using iCube .....	13
Indicators .....	13
Important information.....	15
Troubleshooting Guide.....	18
Declaration of Conformity .....	19
Notices .....	19

# Your iCube

---

Hearing Healthcare Professional: \_\_\_\_\_

\_\_\_\_\_

Telephone: \_\_\_\_\_

Model: \_\_\_\_\_

Serial Number of iCube: \_\_\_\_\_

Replacement Batteries:      One AAA (1.5 Volt),  
Standard or Rechargeable

Warranty: \_\_\_\_\_

Date of Purchase: \_\_\_\_\_

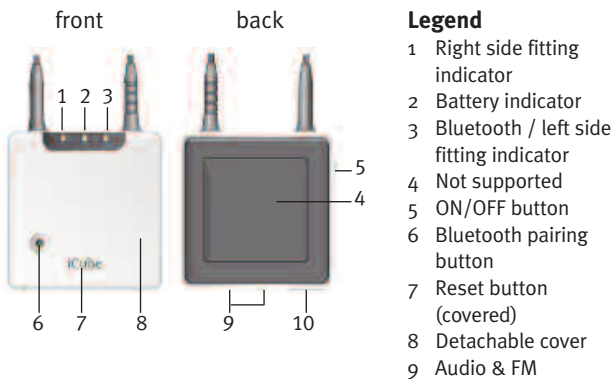
# Using the iCube Instruction Guide

---

iCube enables the wireless transfer of fitting data from your PC directly to your client's hearing instruments. Based on Bluetooth technology the fitting process is fast, smooth and stable, and most importantly, cable-free.

Please read this manual carefully to benefit from all the features of your iCube. For further information, please visit the Unitron website:  
[www.unitronhearing.com](http://www.unitronhearing.com)

Refer to the table of contents for a complete listing of the topics covered in this guide.



## Legend

- 1 Right side fitting indicator
- 2 Battery indicator
- 3 Bluetooth / left side fitting indicator
- 4 Not supported
- 5 ON/OFF button
- 6 Bluetooth pairing button
- 7 Reset button (covered)
- 8 Detachable cover
- 9 Audio & FM connection (not supported, do not use!)
- 10 USB charging and programming connection

## iCube accessories

- USB cable, 3 m (10 ft.)
- iCube charger
- USB Bluetooth adaptor
- USB hub

Contents may vary depending on country.

## Getting started

---

### Installing and using the iCube charger

Install the iCube charger by plugging the power supply into a power outlet and docking iCube into the iCube charger as shown below. It is recommended that you use the iCube charger to store and charge iCube whenever it is not in use. This way it will be sufficiently charged and ready for the next fitting session.



Your iCube has an internal, rechargeable battery. As soon as you place your iCube on the iCube charger, the battery starts charging.

*For safety reasons, recharge the battery only with chargers supplied by Unitron.*

During the charging process, the battery indicator is lit solid. Once the battery is fully charged, the battery indicator will start flashing slowly. Typically, charging an empty battery takes about 90 minutes. It is safe to leave the charger connected overnight — the battery cannot be overcharged.

*When charging your iCube for the first time, leave it to charge for at least three hours (even if the battery*

*indicator starts flashing earlier).*

*A new battery's full performance is achieved only after two or three complete charge and discharge cycles.*

Your iCube battery can be charged hundreds of times. If the operating time of your iCube reduces substantially, please contact your local Unitron representative.

## **Operating time**

Fully charged, your iCube will operate for up to four hours in normal use.

Battery consumption and the operating time of the iCube greatly depend on the usage of the device.

Heavy use will reduce the operating time of your iCube between battery recharges.

## **Battery status**

While turned ON, your iCube indicates the battery status on the battery indicator LED as follows:

- Yellow, slow flash – Battery level is high.
- Yellow, fast flash – Battery level is low.

Once the fast flashing starts, your iCube will still operate for about an hour, but you should recharge the battery as soon as possible. Low battery status is also indicated in U:fit in the “CableFree Fitting Status” dialog.

## **Connecting iCube to your computer**

iCube was designed to bring you the benefits of

CableFree Fitting via Bluetooth connection. However, there are locations where Bluetooth connections are not allowed, so iCube can alternatively be used with a USB connection. In either case, before you can start using your iCube it needs to be connected with your computer.

*Before you continue, make sure the iCube battery charge is high.*

## **Connecting via Bluetooth**

Connecting your iCube via Bluetooth is done in three steps:

### **1. Prepare the Bluetooth connection on your computer**

To use iCube wireless via Bluetooth, make sure that you have Bluetooth activated. If your computer is equipped with Bluetooth built in, find the Bluetooth setting and activate it. For specific instructions please refer to the documentation of the computer and operating system you are using.

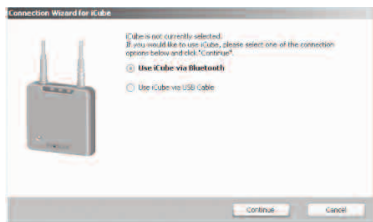
If you are using NoahLink and you have already installed the corresponding external Bluetooth adaptor, you can use that same adaptor for iCube. If your computer is neither equipped with Bluetooth built in nor with a NoahLink compatible Bluetooth adaptor, use the Bluetooth adaptor accessory provided by Unitron.

*Refer to the “quick start guide” document available with the adaptor's Software CD and follow the*

instructions. iCube works within a Bluetooth operating range of up to 10 meters (33 ft.) of the fitting computer.

## 2. Start the Connection Wizard for iCube

With Bluetooth functionality turned ON, you can now initiate the connecting process via the U:fit™ fitting software.



If this is the first time using iCube, pressing the iCube button on the detection screen will start the “ConnectionWizard for iCube”.

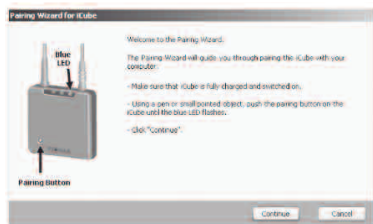
## 3. Pairing iCube with your computer

Select “Use iCube via Bluetooth” and the pairing wizard will guide you through the process of pairing iCube with your computer. Pairing is necessary to control which Bluetooth devices are permitted to communicate with each other. It needs to be completed only once, before first use.

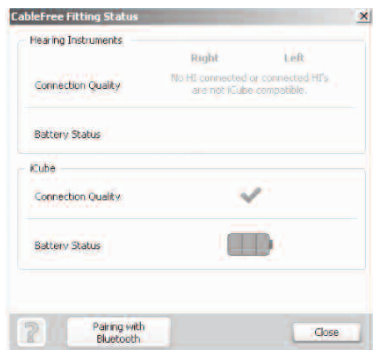
To initiate the pairing process on iCube, set the device into pairing mode by pressing and holding the Bluetooth pairing button for 2 seconds until the



Bluetooth indicator is blue and flashing fast. iCube is now in pairing mode for two minutes or until pairing is completed.



Follow the instructions to complete pairing and finish the connection process for iCube. Upon successful completion, the “CableFree Fitting Status” will inform you about the status of iCube:



## Removing a Bluetooth pairing

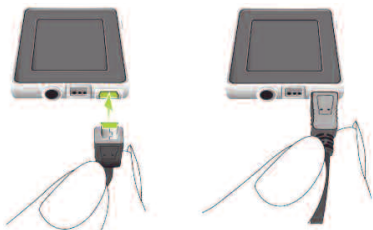
If you wish to remove the Bluetooth pairing from your iCube, press and hold the Bluetooth pairing button for about 10 seconds until the Bluetooth indicator is lit solid blue.

## Connecting via USB cable

If you wish to connect your iCube via USB cable instead of Bluetooth, start the “iCube configuration” in the U:fit fitting application and choose to use iCube via USB cable.

When prompted by the wizard, connect the Mini USB plug of the enclosed USB cable as indicated below. Attach the other end of the cable to a USB socket of your computer.

*Use the optional USB hub accessory if there is no free USB socket on your computer.*



*When connecting iCube for the first time via USB, your computer will start searching for the associated driver software. Depending on the operating system, you*

*may be presented with an installation wizard: "Found New Hardware Wizard". If so, let your computer automatically install the necessary driver software. The driver software has already been installed during the U:fit installation and should be identified by the wizard. It is not necessary to insert the U:fit installation CD.*

After successful installation of the USB driver, continue with the "Connection Wizard for iCube" and follow the instructions. No pairing is required for the USB cable connection. Upon successful completion of the connecting process, the "CableFree Fitting Status" will inform you about the status of iCube.

## **U:fit System Configuration options**

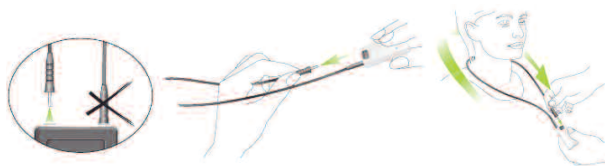
The "Pairing Wizard for iCube" can also be accessed by selecting "Options", and then "iCube", in the menu bar of the fitting application. In the same menu you can also select or deselect iCube. Additionally, you can initiate the Bluetooth pairing process as described earlier.

Before using iCube to fit a client with hearing instruments, make sure the icube battery is sufficiently charged. Remove iCube from the iCube charger and turn it ON.

## **Wearing iCube**

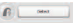
Open the neckloop by unplugging the ridged jack, and place iCube around your client's neck.

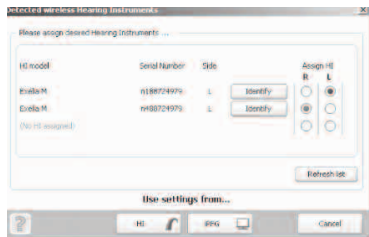
(Re)connecting the neckloop will activate the built-in antenna and enable iCube to operate correctly.



Batteries need to be inserted into the hearing aids and hearing aids need to be turned on prior to detection.

## Detecting and programming hearing instruments

In wireless fitting, where there are no left and right fitting cables, the assignment of left/right is done via U:fit. Click the “Detect” button  on the detection screen. A “detection complete” screen appears showing the detected hearing instruments



Assign (or reassign) each hearing instrument to the desired side (left or right). You can play a beep identification to confirm that left and right have been selected properly.

Continue by selecting to either “write to instrument(s)” or to “read from instrument(s) .

Now the hearing instruments and iCube are ready for fitting. During the programming of hearing instruments, the right side and the left side fitting indicator flash fast red, and blue, respectively.

## Using iCube

---

### **Programming hearing instruments without clients**

When programming hearing instruments without having your clients wear them, make sure they are in range of iCube.

If, for some reason, iCube becomes unresponsive, remove the cover by sliding it upwards. Press the reset button. The Bluetooth pairing will not be lost.

*If all three indicators on your iCube are lit solid, this may indicate a software problem. Refer to Troubleshooting section.*

# Indicators

---

## Battery indicator



**Yellow** - Slow flash  
*Battery full*



**Yellow** - Fast flash  
*Battery empty*



**Yellow** - Lit solid  
*Battery charging*

## Fitting Status Indicator



**Red** - Right fitting status indicator flashing fast.  
*iCube is programming the right hearing instrument.*



**Blue** - Left fitting status indicator flashing fast.  
*iCube is programming the left hearing instrument.*

## Software Indicator

iCube is built such that it can be upgraded whenever new functionalities are available. Follow the instructions provided together with the new software version.



**Red/yellow/blue** - All three indicators flash fast.  
*iCube is being upgraded.*



**Red/yellow/blue** - All three indicators lit solid.  
*This may indicate a software problem. Refer to Troubleshooting section.*

## **Important information**

---

### **Maintenance and care**

- Clean iCube using a damp cloth. Never use household cleaning products (washing powder, soap, etc.) or alcohol to clean the device.
- Protect iCube from excessive moisture and heat.
- Protect it from excessive shock and vibration.
- When iCube is not in use, turn it OFF and store it in the iCube charger so it will be sufficiently charged and ready for the next fitting session.

### **Safety notice and other important information**

- Keep this device out of reach of children under 3 years.
- Persons using medical devices such as pacemakers are not permitted to use this device.
- X-ray radiation (e.g. CT scans, MRI scans) may adversely affect the correct functioning of this device. We recommend that you keep iCube outside the X-ray radiation procedure rooms. High-powered electronic equipment, larger electronic installations and metallic structures may impair and significantly reduce the operating range. External devices may only be connected if they have been tested in accordance with applicable IEC Standards.

### **Important information**

- The digitally-coded, inductive transmission



technology used in this device is extremely reliable and experiences virtually no interference from other devices. It should be noted, however, that when operating the device near a computer terminal or other strong electromagnetic fields, it may be necessary to be at least 60 centimeters (24") away to ensure proper operation. If the hearing instrument do not respond to the device because of an unusual field disturbance, move away from the disturbing field.

- Use only original Unitron accessories.
- Opening iCube might damage it. If problems occur which cannot be resolved by following the remedy guidelines in the troubleshooting section of this user guide, contact your local Unitron representative.
- iCube may only be repaired by an authorized service center.
- Do not make any changes or modifications to this device.
- Do not unplug the neckloop when iCube is saving data to the hearing instruments. Keep the neckloop closed when iCube is not in use or stored on the iCube charger.
- If you use several iCubes in the same building, be aware that their inductive field can disturb one another if within a range of 2 meters (6 feet). This may even occur when used in different rooms. Do not use iCube while charging.

# Troubleshooting Guide

CAUSE	POSSIBLE REMEDY
<b>iCube is no longer recognized by the computer to which it was previously paired</b>	
<ul style="list-style-type: none"><li>• The Bluetooth functionality of your computer may be disabled.</li><li>• iCube is out of range.</li></ul>	<ul style="list-style-type: none"><li>• Find the Bluetooth settings on your computer and turn Bluetooth functionality ON.</li><li>• Move iCube closer to your computer.</li></ul>
<b>iCube turns OFF</b>	
<ul style="list-style-type: none"><li>• The battery is empty</li></ul>	<ul style="list-style-type: none"><li>• Charge iCube</li></ul>
<b>iCube is unresponsive and all three indicators are lit solid</b>	
<ul style="list-style-type: none"><li>• This may indicate a software problem</li></ul>	<ul style="list-style-type: none"><li>• Unplug the USB cable and press the reset button. If the problem persists, delete Bluetooth pairings and press the reset button again. If the problem still persists, contact your local Phonak representative.</li></ul>
<b>A second or different iCube cannot be connected to my computer</b>	
<ul style="list-style-type: none"><li>• Only one iCube can be paired with your computer</li></ul>	<ul style="list-style-type: none"><li>• Start the “Pairing Wizard for iCube” which will provide you with the option of removing the existing device. To delete the Bluetooth pairing from your iCube, press and hold the Bluetooth pairing button for about 10 seconds until the Bluetooth indicator is lit solid blue.</li></ul>

For any problems not listed in the guide, contact your hearing healthcare professional. If you do not have a hearing healthcare professional, please contact the nearest office listed on the back page of this booklet.

## Declaration of Conformity

---

Unitron Hearing declares under its sole responsibility that the iCube is in conformity with the following standards or other standardizing documents:

Radio: EN 300-330  
EN 300 328

EMC: EN 60601-1-2

Safety: EN/IEC 60601-1


Implementing the provisions of the MDD 93/42/EEC (Medical Device Directive), R&TTE Directive 1999/5/EC (Radio and Telecommunications Terminal Equipment), EMC Directive 2004/108/EC (Electromagnetic Compatibility) and LVD 2006/95/EC (Low Voltage Directive).

## Notices

---

### Notice 1

This instrument is certified under:

 FCC ID: VMY-ICUBEU  
IC: 2756A-ICUBEU

This device complies with Part 15 of the FCC Rules and with RSS-210 of Industry Canada. Operation is subject to the following two conditions:

- 1) this device may not cause harmful interference, and
- 2) this device must accept any interference received, including interference that may cause undesired operation.

Changes or modifications made to this equipment not expressly approved by Unitron Hearing may void the FCC authorization to operate this equipment.

## **Notice 2**

This Class B digital apparatus complies with Canadian ICES-003.

## **Notice 3**

This equipment has been tested and found to comply with the limits for a Class B digital device, pursuant to Part 15 of the FCC Rules.

These limits are designed to provide reasonable protection against harmful interference in a residential installation. This equipment generates, uses, and can radiate radio frequency energy and, if not installed and used in accordance with the instructions, may cause harmful interference to radio communications. However, there is no guarantee that interference will not occur in a particular installation.

If this equipment does cause harmful interference to radio or television reception, which can be determined by turning the equipment off and on, the user is encouraged to try to correct the interference by one or more of the following measures:

- Reorient or relocate the receiving antenna
- Increase the separation between the equipment and receiver

- Connect the equipment into an outlet on a circuit different from that to which the receiver is connected
- Consult the dealer or an experienced radio/TV technician for help.

**Operating conditions** This product has been designed for trouble-free operation without restrictions when used as intended, unless otherwise stated in this user guide.

**Transportation and storage conditions** Temperature should not exceed limits of  $-20^{\circ}/60^{\circ}$  Celsius at a relative air humidity of 65% for extended periods during transportation and storage. Air pressure between 500 and 1100 hPa is not detrimental to this device.



# UNITRON HEARING DISTRIBUTORS

## CORPORATE OFFICE/INTERNATIONAL

20 Beasley Drive, P.O. Box 9017, Kitchener, ON N2G 4X1 Canada

### AUSTRALIA

Level 2, Norwest Quay, 21 Solent  
Circuit, Baulkham Hills, NSW, NSW  
2153

### BELGIUM

Baron de Vironlaan, 60  
b-1700 Dilbeek

### CANADA

20 Beasley Drive, P.O. Box 9017,  
Kitchener, ON N2G 4X1

### CHINA

No. 200 Suhong Road, Export  
Processing Zone 4D, Suzhou  
Industrial Park 215021

### DENMARK

Nitivej 10, DK-2000 Frederiksberg

### EUROPEAN REPRESENTATIVE

Daimlerstrasse 22, 70736  
Fellbach-Oeffingen, Germany

### FRANCE

5, rue Maryse Bastié - BP 15 69671  
Bron Cedex, France

### NETHERLANDS

Archimedesbaan 19, P.O. Box 1214,  
3430 BE Nieuwegein

### NEW ZEALAND

10/215 Rosedale Rd., M277 Private  
Bag, 300987, Albany, Auckland

### NORWAY

Brugata 14 0186  
Oslo, Norway

### SOUTH AFRICA

First Floor – Selborne House,  
Fourways Golf Park, Roos Street,  
Fourways, Johannesburg

### SPAIN

Urb. El Palmeral Bl. IX, 17-27  
Alicante, Spain -- 03008

### SWEDEN

Förmansvägen 2, 4 tr  
SE-11743, Stockholm, Sweden

### UNITED KINGDOM

St. George House, Cygnet Court,  
Centre Park, Warrington, Cheshire  
WA1 1PD

### U.S.A.

Suite A, 2300 Berkshire Lane North,  
Plymouth, MN 55441

## MANUFACTURER

### UNITRON HEARING LTD.

20 Beasley Drive, P.O. Box 9017, Kitchener, ON N2G 4X1 Canada





[www.unitronhearing.com](http://www.unitronhearing.com)