



NEVO<sup>®</sup>

New evolution in home control



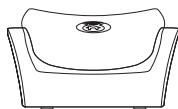
NEVO<sup>Q50</sup>

Nevo<sup>Q50</sup> provides fully-customizable control of all of your home theater devices. Its touch-sensitive screen is software-based, so your installer/integrator can include just those controls you actually use.

## Before You Use Nevo<sup>Q50</sup>

Please ensure your Nevo<sup>Q50</sup> is fully charged before use.

Nevo<sup>Q50</sup> Universal  
Controller



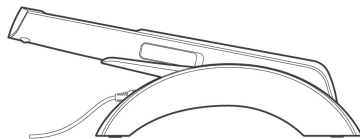
Charging Cradle



AC Power  
Adapter; varies  
by country

To charge your Nevo<sup>Q50</sup>:

1. Connect the power adapter to the charging cradle and plug the adapter into a wall outlet.
2. Power on and dock Nevo<sup>Q50</sup> to begin charging the battery. If it has not already been charged, it will take 3-4 hours to fully charge the battery the first time.



### Recharging Nevo<sup>Q50</sup>

Nevo<sup>Q50</sup> has a built-in Lithium-ion rechargeable battery. Nevo<sup>Q50</sup> beeps and displays a warning message when the battery is running low. You should dock Nevo<sup>Q50</sup> at this time to charge the battery.

You can dismiss the warning message by clicking **OK**; if you do so and the battery power becomes critically low, Nevo<sup>Q50</sup> will beep and display a critical low battery warning message. You cannot dismiss this message and should dock Nevo<sup>Q50</sup> immediately.

To dock Nevo<sup>Q50</sup>, simply set the controller in the charging cradle. When it is correctly docked, the blue light will appear on the bottom of the remote.

### About Battery Life

As with all battery-operated devices, battery life will vary depending on use. It is a good practice to keep Nevo<sup>Q50</sup> in its charging cradle when you are not using it.

# Getting to Know Nevo<sup>Q50</sup>

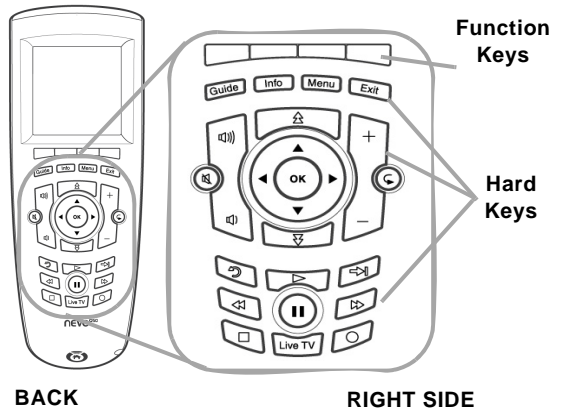
Nevo<sup>Q50</sup> offers the following types of controls:

**Touchscreen:** To use the touchscreen, gently touch the buttons that appear on it. If you prefer, slide the stylus from its storage port on the bottom of Nevo<sup>Q50</sup>:



Using the stylus, gently tap buttons on the touchscreen to control your home theater and home automation devices. You may prefer to always use the stylus when you are configuring settings. Talk with your installer/integrator for more information on these settings.

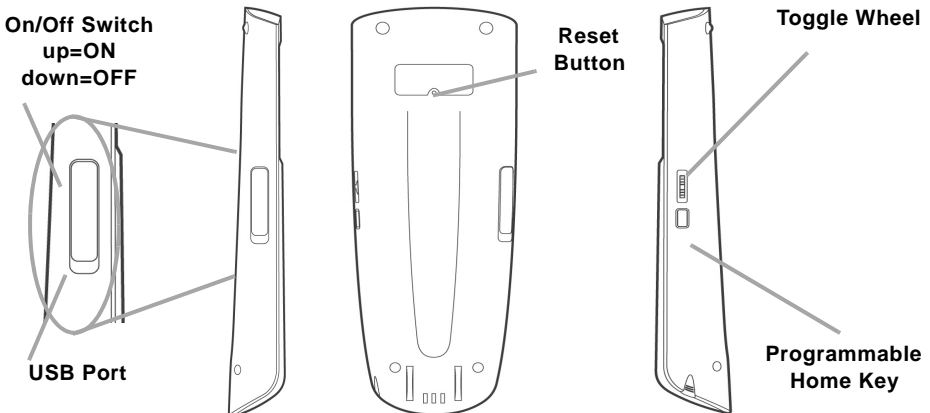
**Nevo<sup>Q50</sup> Keys:** The keys on Nevo<sup>Q50</sup> have been customized to your preference by your installer/integrator. An additional set of unlabeled keys (function keys) appear immediately below the touchscreen, above the hard buttons. A label appears on the touchscreen above them to indicate the functions assigned to those keys.



LEFT SIDE

BACK

RIGHT SIDE



Move the toggle wheel up and down to move between the screens. Press the toggle wheel in to return to the first page of the current page collection.

**Note:** The On/Off Switch must be moved completely into the up or down position to turn Nevo<sup>Q50</sup> on or off.

## Caring for Nevo<sup>Q50</sup>

Use only the stylus to switch Nevo<sup>Q50</sup> on or off. Avoid using sharp objects. Clean your remote with a soft, damp cloth using a gentle, non-caustic cleaner.

**CAUTION:** Do not use a caustic or abrasive cleaner. This may damage the surface of your controller.

**For more information, contact your installer/integrator:**

Installer/integrator: attach your business card or business sticker here.

**NOTICE:** Nevo, NevoStudio, Nevo<sup>Q50</sup>, NevoStudio Pro and NevoConnect are registered trademarks or trademarks of Universal Electronics Inc., in the United States and/or other countries. Other product and company names may be trademarks of their respective companies.

**FCC NOTICE:** This equipment has been tested and found to comply with the limits for a class B digital device, pursuant to part 15 of the FCC Rules. These limits are designed to provide a reasonable protection against harmful interference in a residential installation. This equipment generates, uses, and can radiate radio frequency energy, and if not installed and used in accordance with the instructions, may cause harmful interference to radio communications.

However, there is no guarantee that interference will not occur in a particular installation. If this equipment does cause harmful interference to radio or television reception, which can be determined by turning the equipment off and on, the user is encouraged to try to correct the interference by one or more of the following measures:

- Reorient or relocate the receiving antenna.
- Increase the separation between the equipment and receiver.
- Connect the equipment into an outlet or a circuit different from that to which the receiver is connected.
- Consult the dealer or an experienced radio/TV technician for help

Operation is subject to the following two conditions: (1) this product may not cause harmful interference, and (2) this product must accept any interference received, including interference that may cause undesired operation.

This equipment has been verified to comply with the limits for a class B computing device, pursuant to FCC Rules. In order to maintain compliance with FCC regulations, shielded cables must be used with this equipment. Operation with non-approved equipment or unshielded cables is likely to result in interference to radio and TV reception. The user is cautioned that changes and modifications made to the equipment without the approval of the manufacturer could void the user's authority to operate this equipment.

FCC ID: MG362400

IC ID: 2575A-URC6240

Copyright © 2007 Universal Electronics Inc  
All rights reserved.

Document version NQ50QGP101007

**Corporate Headquarters  
Universal Electronics**

6101 Gateway Drive  
Cypress, CA 90630-4841  
[www.uei.com](http://www.uei.com)

**International Headquarters  
Universal Electronics**

Institutenweg 21  
7521 PH Enschede  
The Netherlands  
[www.uei.com](http://www.uei.com)