

EVA

Artwork **EVA Remote** **08**

Dimensions: 49 x 154 x 12 mm
 Batteries: Coin Cell x 3
 Designer: Raz XL, Cesar Almeida
 PM&A: Yacovitz Kogut
 Date: 12/2/18
 URS: XXXXXXX
 P/N: XXXXXXX

Revisions:
 Rev. 01, P&A, Initial Release
 Rev. 02, P&A, Corrected arrow symbol
 Rev. 03, CA, Updated colors and lead location
 Rev. 04, CA, Updated EVA tag, in new Case

front case (top)

material: pc
 color: RAL 9017 (traffic black) texture: MT-33006
 *printed power graphic
 color: PMS Red 703 C

cake button

material: pc
 color: RAL 9017 (traffic black) texture: MT-33006
 *printed graphics
 pms white o

keypad

material: pc
 color: RAL 9017 (traffic black) texture: MT-33006
 *printed graphics
 pms white o
 pms cool gray 8 c
 *"recanal" printed graphic
 color: PMS Red 703 C
 color: PMS Green 7480 C
 color: PMS Yellow 2007 C
 color: PMS Blue 7698 C

clickable slider

material: pc
 color: RAL 9017 (traffic black) texture: MT-33006
 pms cool gray 8 c

front case (bottom)

material: pc
 color: RAL 9017 (traffic black) texture: MT-33006

***printed graphics**
 see corresponding AWK document for colors
 *printed to graphics
 color: pms cool gray 8 c

frame
 material: pc/abs T80 by CM
 color: RAL 9017 (traffic black)
 finish: HCPM High polish
 note: we want a black mirror finish (like apple's 2013 mac pro)

battery cover
 material: pc
 color: RAL 9017 (traffic black) texture: MT-33006

captured screw
 color: black
 texture: gloss

debossed icon: polystyrene #6000



Keypad Artwork

EVA Universal Remote Control Quick Reference Guide

CONTROLLING EVA BOX

1. Turn on the TV.
2. Locate the 5- digit code for your TV.
3. Turn on the TV.
4. Press and hold **MUTE** and **SELECT** at the same time until the green light flashes twice.
5. Using the number keys enter the 5-digit code for your brand of TV. If performed correctly, the green light under the TV flashes twice.
6. Aim the remote at your TV and press **VOL or MUTE** key once. Your TV should ramp up or down or MUTE. If Volume does not change, repeat steps 3 and 5, trying each code for your brand until you find the correct code.

BLE Pairing

Connecting and Pairing

To pair the EVA remote control to the EVA BOX, perform the following steps:

- The EVA box will be ready to pair either by physical button or automatic via software. EVA box UI will display pairing user instructions.
- Box will be put in an active scan mode, and look for RCU advertising to connect
- If EVA BLE remote control is unpaired, the remote control will advertise and scan for a set duration on every keypress.
- Box will recognize remote and attempt to pair.

If the remote control does not have any pairing information, the remote will attempt to advertise.

- EVA BLE remote control will send out advertisement on key press.
- Remote will continue to send these packets at regular intervals for a set duration.
- If the set amount of time has passed with no keypress remote will stop advertising.
- If key pressed during advertising, time out will not be extended.

For the *Power* key and *EVA* key the RCU will initiate indirect advertising instead of direct advertising.

BLE Pairing Reset

To reset the pairing on the EVA remote control, perform the following steps:

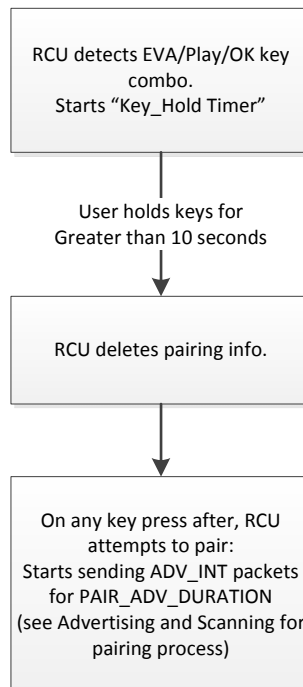
- User will simultaneously press 2 keys (*Eva and Play*) for at least 8 Sec.
- Send a reset message to the box
- RCU will enter pairing mode. It will transmit BLE advertisement and pair if return package is received.
- If a successful pairing is made, the RCU will delete its past pairing info and store the new pairing info.
- If no successful pairing is made, the RCU will retain previous pairing info.

RESTORING FACTORY DEFAULT SETTINGS

To reset all the functions of the remote control to the factory default settings following these steps:

- User will simultaneously press 3 keys (*Eva, Play, OK*) for at least 10 seconds.
- The remote will delete its pairing information and return to factory default state.

Factory Reset Methodology:



COMPLIANCE WITH FCC RULES AND REGULATIONS

This equipment has been tested and found to comply with the limits for a Class B digital device, pursuant to part 15 of the FCC Rules. These limits are designed to provide reasonable protection against harmful interference in a residential installation. This equipment generates, uses and can radiate radio frequency energy and if not used in accordance with the instructions, may cause harmful interference to radio communications.

However, there is no guarantee that interference will not occur in a particular installation. If this equipment does cause harmful interference to radio or television reception, the user is encouraged to try to correct the interference by one or more of the following measures:

- Reorient or relocate the receiving antenna
- Increase or decrease the separation between the equipment and receiver.
- Consult the dealer or an experienced remote control/ TV technician for help.
- It is strongly recommended that the TV be plugged into a separate wall outlet.

This equipment has been verified to comply with the limits for a Class B computing device, pursuant to FCC Rules. The user is cautioned that changes and modifications made to the equipment without the approval of manufacturer could void the user's authority to operate this equipment.

FCC Authorization Label

This device complies with part 15 of the FCC Rules. Operation is subject to the following two conditions:

1. This device may not cause harmful interference.
- 2 This device must accept any interference received, including interference that may cause undesired operation.