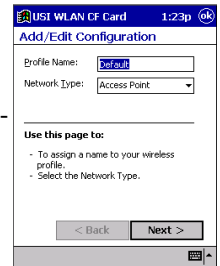




USI WLAN CF Card 802.11b 2.4GHz Quick Start Guide

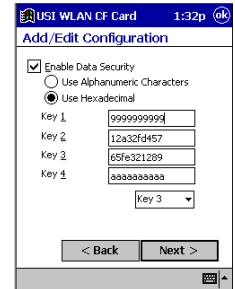
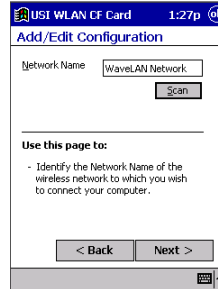


- b. Tap **Add** or **Edit** to add or edit the selected profile.
- c. Tap **Delete** to delete the selected profile.



4. Tap **Next**, and set the Network Name.

5. Tap **Next**, and configure your security settings.

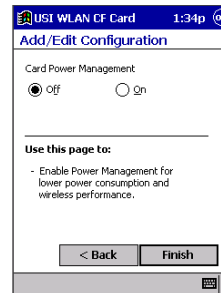


Install the Driver

To install the driver and utility on your Pocket PC from the software and documentation CD:

1. Using your sync cable or cradle, connect your Pocket PC to the computer. For additional information, see the documentation that came with your Pocket PC.
2. Insert the software and documentation CD into the drive on the computer.
3. Using Microsoft Windows Explorer or My Computer, navigate to **x:\Setup**, where **x** is the CD drive letter.
4. Double-click **setup.exe**.
5. Follow the instructions on the computer screen to finish the installation.
6. Insert the USI WLAN CF Card into the CF Card slot on your PocketPC.

6. Tap **Next**, and turn Power Management on or off.



7. Click **finish**.

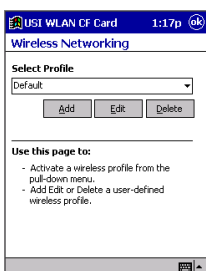
Finding Information

- For more information, see the User's Guide on the CD that came with the card.
- For the latest information, go to the USI website at www.usi.com.tw

Configure the Wireless Network

To configure the wireless network in a PocketPC environment:

1. Tap **Start** → **Settings** → **System** tab.
2. Tap the **USI WLAN CF Card** icon to run the Wireless Networking Setting utility.
3. Select, add, or delete a profile:



- a. Select a profile from the drop-down menu, and tap **OK** to switch your station from one wireless network to another.

Information in this document is subject to change without notice.
© 2002 Universal Scientific Industrial Co.,Ltd. All rights reserved.

Reproduction in any manner whatsoever without the written permission of USI is strictly forbidden.

15.19(a)(3)

This device complies with Part 15 of the FCC Rules. Operation is subject to the following two conditions:

- (1) This device may not cause harmful interference.
- (2) This device must accept any interference received, including interference that may cause undesired operation.

Prohibition of co-location

This device must not be co-located or operating in conjunction with any other antenna or transmitter

15.105 Federal Communications Commission (FCC) Requirements, Part 15

This equipment has been tested and found to comply with the limits for a class B digital device, pursuant to part 15 of the FCC Rules. These limits are designed to provide reasonable protection against harmful interference in a residential installation.

This equipment generates, uses and can radiate radio frequency energy and, if not installed and used in accordance with the instructions, may cause harmful interference to radio communications. However, there is no guarantee that interference will not occur in a particular installation. If this equipment does cause harmful interference to radio or television reception, which can be determined by turning the equipment off and on, the user is encouraged to try to correct the interference by one or more of the following measures:

- Reorient or relocate the receiving antenna.
- Increase the separation between the equipment and receiver.
- Connect the equipment into an outlet on a circuit different from that to which the receiver is connected.
- Consult the dealer or an experienced radio/TV technician for help.

IMPORTANT NOTE

FCC RF Radiation Exposure Statement: This equipment complies with FCC RF radiation exposure limits set forth for an uncontrolled environment. This device and its antenna must not be co-located or operating in conjunction with any other antenna or transmitter

Regulatory information / Disclaimers

Installation and use of this Wireless LAN device must be in strict accordance with the instructions included in the user documentation provided with the product. Any changes or modifications (including the antennas) made to this device that are not expressly approved by the manufacturer may void the user's authority to operate the equipment. The manufacturer is not responsible for any radio or television interference caused by unauthorized modification of this device, or the substitution of the connecting cables and equipment other than manufacturer specified. It is the responsibility of the user to correct any interference caused by such unauthorized modification, substitution or attachment. Manufacturer and its authorized resellers or distributors will assume no liability for any damage or violation of government regulations arising from failing to comply with these guidelines.

SAR Exposure

This device has been tested for compliance with FCC RF Exposure (SAR) limits in typical flat configurations.

In order to comply with SAR limits established in the ANSI C95.1 standards, it is recommended when using a CF card that the integrated antenna is positioned more than 1.5cm from your body or nearby persons during extended periods of operation. If the antenna is positioned less than 1.5cm from the user, it is recommended that the user limit the exposure time.

Technical Support

The identification of the product :

Product Name : USI RoamUniversal 802.11b WLAN CF Card

Model Name : CF114100

Application : Handheld devices

Technical Contact :

Universal Scientific Industrial Co., Ltd. (Headquarters)

Address : 135, Lane 351, Taiping Rd., Sec. 1, Tsao Tuen, Nan Tou,
Taiwan

USI Taipei Office : 10F, 420, Keelung Road, Sec. 1, Taipei, Taiwan

Contact Person : Ray Huang

Telephone : +886-2-2345-5006, Ext.119

Fax : +886-2-2345-5191

Email : rayhwang@ms.usi.com.tw

Technical Contact in the US :

Address : 685A Jarvis Drive, Morgan Hill, CA 95037, USA

Telephone : +1-408-776-1966

Fax : +1-408-778-5509

Website : www.usi.com.tw