

[TABLET & TOOLS](#)

[CUSTOMIZING](#)

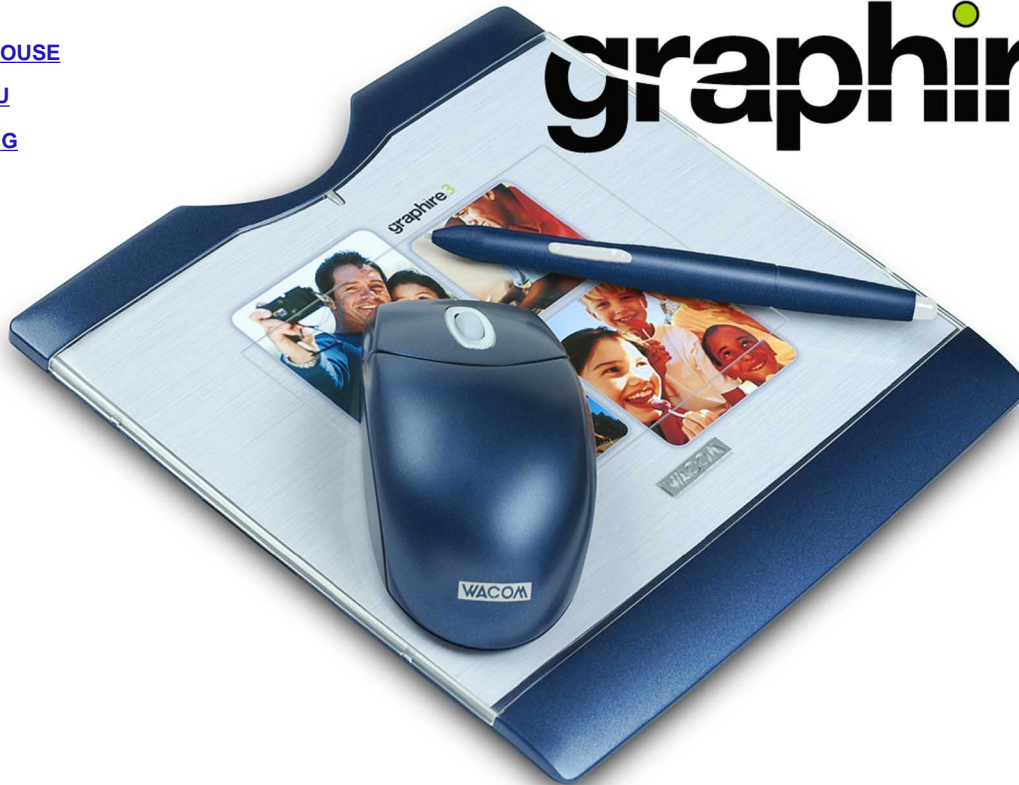
[PEN](#)

[CORDLESS MOUSE](#)

[POP-UP MENU](#)

[TROUBLESHOOTING](#)

graphire 3



User's Manual for Windows® & Macintosh®

[CONTENTS](#)

[INDEX](#)



Wacom Graphire® 3 User's Manual for Windows® & Macintosh®, March 07, 2003

English V1.0 for Windows & Macintosh

Copyright © Wacom Company, Limited, 2003

All rights reserved. No part of this manual may be reproduced except for your express personal use. Wacom reserves the right to revise this publication without obligation to provide notification of such changes. Wacom does its best to provide current and accurate information in this manual. However, Wacom reserves the right to change any specifications and product configurations at its discretion, without prior notice and without obligation to include such changes in this manual.

DuoSwitch is a trademark, and Graphire and Wacom are registered trademarks of Wacom Company, Limited.

Adobe, Acrobat, and Acrobat Reader are either registered trademarks or trademarks of Adobe Systems Incorporated in the United States and/or other countries. Microsoft and Windows are either registered trademarks or trademarks of Microsoft Corporation in the United States and/or other countries. Apple, the Apple logo, and Macintosh are registered trademarks of Apple Computer, Inc., registered in the U.S. and other countries. Any additional company and product names mentioned in this documentation may be trademarked and/or registered as trademarks. Mention of third-party products is for information purposes only and constitutes neither an endorsement nor a recommendation. No responsibility is assumed with regard to the performance or use of these products.

[CONTENTS](#)

[INDEX](#)



CONTENTS

About the Manual	5	Control Panel Basics	28
Navigating the Manual	7	Customizing the Pen	29
WORKING WITH GRAPHIRE3	8	Customizing the Cordless Mouse	30
Graphire3 Tablet Features	9	Customizing the Pop-up Menu	31
Graphire3 Input Tools	10	Control Panel Details	32
Setting Up Your Work Area	11	Adjusting Tip and Eraser Feel	33
Using the Pen	12	Adjusting Double-Click	34
Holding the Pen	13	Customizing the Side Switch	35
Pointing	14	Button Functions	36
Clicking	15	Tablet Tracking	40
Using the Side Switch	16	Mapping to Multiple Monitors	42
Dragging	17	Portion of Screen	43
Proximity	18	Portion of Tablet	44
Drawing with Pressure	19	Setting Mouse Speed	45
Erasing	20	TROUBLESHOOTING	46
Eye-Hand Coordination Exercise	21	Testing Your Tablet	47
Using the Cordless Mouse	22	Troubleshooting Tables	49
Using the Cordless Mouse Fingerwheel	23	General Problems	49
Working with the Tablet	24	Windows-Specific Problems	53
Changing the Tablet Underlay	25	Macintosh-Specific Problems	54
Creating a New Tablet Underlay	26	Technical Support Options	55
CUSTOMIZING	27	Obtaining Driver Downloads	56
Opening the Control Panel	27		



APPENDICES	57	License and Warranties	
Caring for Your Tablet and Tools	58	(Worldwide, Except for Europe, Africa and Middle East)	66
Replacing the Pen Tip	58	Software License	66
Uninstalling the Software	59	Limited Warranty (Worldwide, Except Europe, Africa and Middle East)	67
Product Specifications	60	Warranty on Sales Outside of U.S. and Canada (Except Europe, Africa and Middle East)	69
General Specifications for All Graphire3 Tablets	60	License and Warranty	
Graphire3 4x5 / A6 Tablet (Model CTE-430)	61	(Europe, Africa and Middle East)	70
Graphire3 6x8 / A5 Tablet (Model CTE-630)	61	Software License Agreement	70
Graphire3 Pen (Model EP-130)	61	Entitlement to Use the Software	70
Graphire3 Cordless Mouse (Model EC-130)	62	Limited Warranty	71
Graphire3 Inking Pen (Model EP-200, optional)	62	GLOSSARY	73
Product Information	62	INDEX	75
Ordering Parts and Accessories	63		
Radio and Television Interference	64		
FCC Notice	64		
CE Declaration	65		



ABOUT THE MANUAL

This combined interactive User's Manual for Windows and Macintosh provides quick access to information about Graphire3. Just click on a navigation button or highlighted word to move through the document. The information is common to both platforms, unless otherwise noted. Windows screen captures are shown.

- The [Contents](#) enables you to go directly to a topic by clicking on it.
- [Working with Graphire3](#) is the learning chapter, and introduces you to the many capabilities of your Graphire3 pen and mouse set. It includes a description of the features and functions of your Graphire3 tools, as well as exercises for new users. If you are not familiar with a pen tablet, this chapter gives you the basics.
- [Customizing](#) describes how you can change the control panel settings to optimize your Graphire3 pen and mouse set for the way you like to work.
- Want to test your tablet? Need troubleshooting guidelines? [Troubleshooting](#) is where you will find the answers to most common questions.
- The [Appendices](#) include a variety of information: tips on caring for your tablet and tools, a how-to on uninstalling the tablet software, your license and warranty, and more.

Note: This manual does not contain information on installing your tablet. Please refer to your product Quick Start Guide and to the automated software installer (located on the Wacom Tablet CD) for details on installing your Wacom tablet.

If you are new to electronic documentation, be sure to read [Navigating the Manual](#).



SMALL CAPITAL LETTERS are used to identify the names of keyboard keys, dialog boxes, and control panel options. Remember that you can always use the Acrobat Reader zoom-in tool to increase the size of the manual on your display screen.

The following kinds of information are not included with this product: information about your specific computer hardware or operating system, information about application software, and information about other Wacom tablets. Your best source for this information is the set of manuals and disks that came with your hardware, operating system, applications, or other Wacom tablets.

Many graphics applications have built-in support for Graphire3 features (such as pressure-sensitivity and eraser support). You can find a listing of applications that support these features at Wacom's web site (see [Product Information](#)). For information on how best to use Graphire3 features within a specific application, refer to the instructions in that application's manuals.



NAVIGATING THE MANUAL

Use the navigation controls to move through the manual:



Go to front page.

[CONTENTS](#)

Go to Table of Contents.

[INDEX](#)

Go to Index.



Go back to previous view.



Page back, or page forward.

[HEADING TEXT](#)

Go to beginning of section.

[Topic](#)

Go to topic.



Topic continued.

Acrobat Reader provides you with additional tools for using and printing the manual. Refer to the *Acrobat Reader Online Guide* for more information.

[CONTENTS](#)

[INDEX](#)



WORKING WITH GRAPHIRE3

The Graphire3 pen and mouse set consists of two basic elements: a tablet that serves as your work area, and the [Graphire3 Input Tools](#) you use with the tablet.

The quickest way to learn about your Graphire3 pen and mouse set is to become familiar with its appearance and features. If you are new to using a pen tablet and tablet input tools, read the following sections; they describe your Graphire3 tools and explain how to use them with the tablet.

Note: The Cordless Mouse that came with your Graphire3 tablet will not work on any other tablet model (including tablets from the Graphire or Graphire2 series).

[GRAPHIRE3 TABLET FEATURES](#)

[GRAPHIRE3 INPUT TOOLS](#)

[SETTING UP YOUR WORK AREA](#)

[USING THE PEN](#)

[USING THE CORDLESS MOUSE](#)

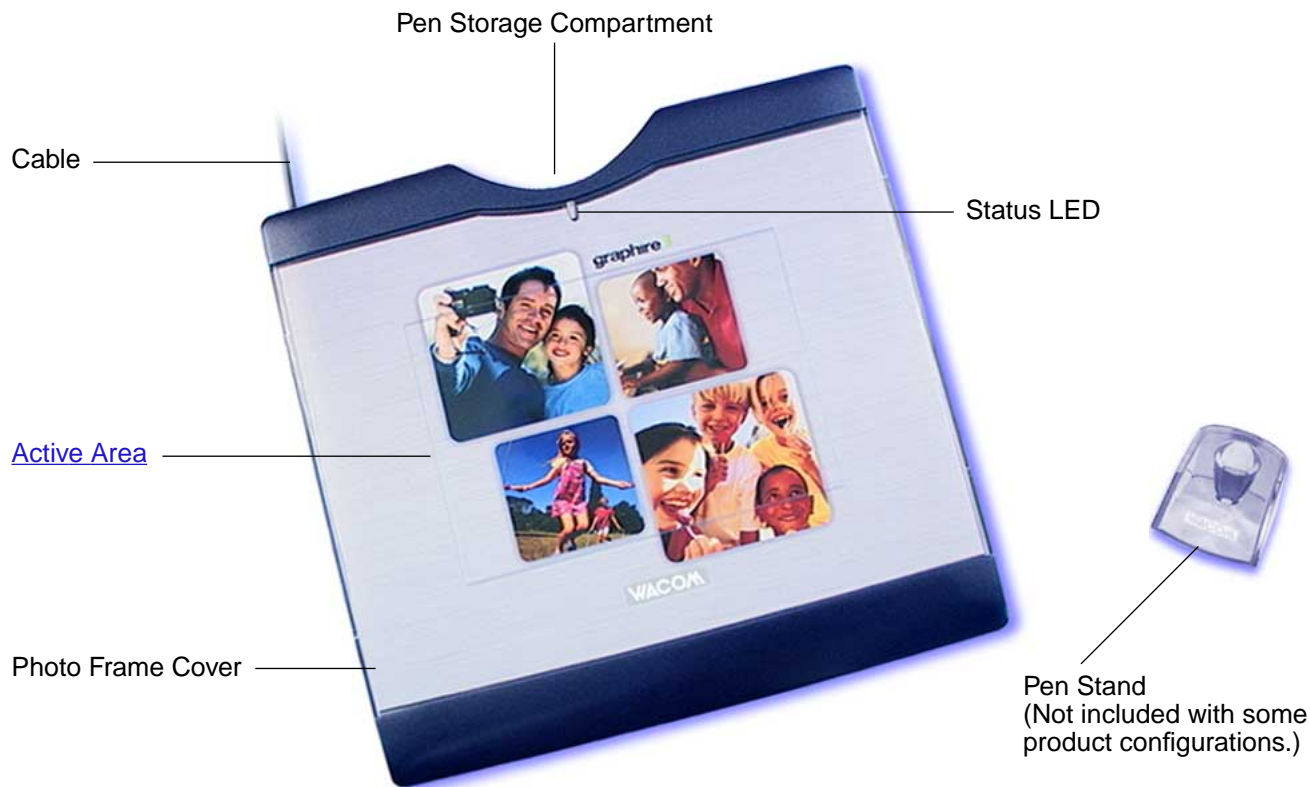
[WORKING WITH THE TABLET](#)

[CONTENTS](#)

[INDEX](#)



GRAPHIRE3 TABLET FEATURES



Note: To learn more about your tablet, see [Working with the Tablet](#). See also [Changing the Tablet Underlay](#) and [Creating a New Tablet Underlay](#).

[CONTENTS](#)

[INDEX](#)

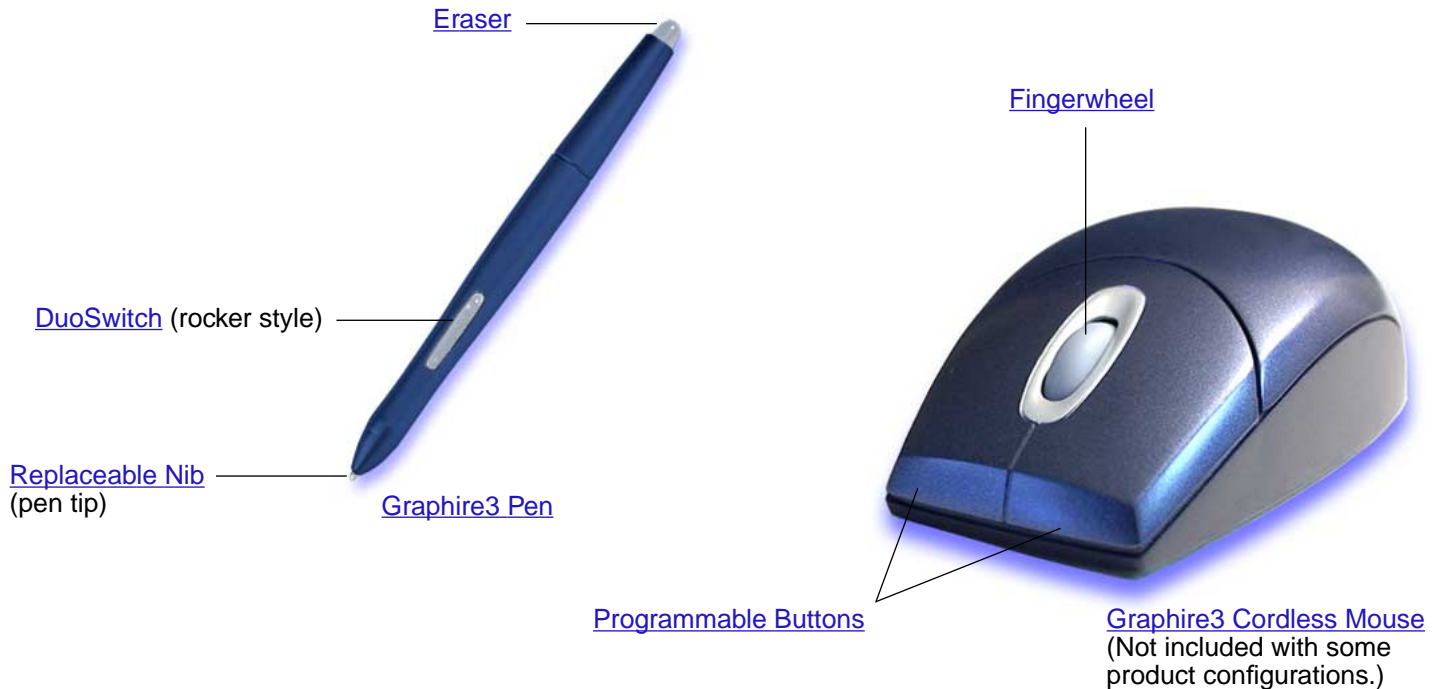
[WORKING WITH GRAPHIRE3](#)



GRAPHIRE3 INPUT TOOLS

Your Graphire3 input tools are cordless, batteryless, and ergonomically designed.

- The Graphire3 pen is a pressure-sensitive freehand tool for image editing and creating natural-looking pen and brush strokes.
- The Graphire3 Cordless Mouse is an ideal tool for navigation, with three customizable buttons that you can program for different functions. The integrated fingerwheel is both a programmable middle button and a rolling wheel. In most applications, rolling the wheel will cause the active window to scroll.



SETTING UP YOUR WORK AREA

To minimize fatigue, organize your work area so you can work comfortably. Position your tablet, input tools, and keyboard so they are easily accessible without unnecessary reaching. Your monitor should be positioned so you can view it comfortably with a minimum of eyestrain.



Here are some other points to keep in mind:

- Take short breaks between tasks to stretch and relax your muscles.
- Use a gentle grip when working with your tools.
- Alternate tasks throughout the day.
- Maintain a good posture at all times. Minimize awkward postures and repetitive movements that cause discomfort.
- Change your position if you feel any discomfort due to your work position.

Note: Wacom makes no representation, promise or guarantee that Wacom products will cure or prevent, in whole or in part, mouse-induced repetitive stress symptoms, injuries or conditions. Individual results may vary. Always obtain competent medical advice to determine the most appropriate treatment for your specific situation.

See [Working with the Tablet](#) for more information.

USING THE PEN

Your Graphire3 pen is cordless, batteryless, and pressure sensitive. There are four basic techniques for using the pen: pointing, clicking, double-clicking, and dragging. With a bit of practice, using the pen will become second nature to you. If you are unfamiliar with using a pen, try the exercises on the following pages.

[HOLDING THE PEN](#)

[POINTING](#)

[CLICKING](#)

[USING THE SIDE SWITCH](#)

[DRAGGING](#)

[PROXIMITY](#)

[DRAWING WITH PRESSURE](#)

[ERASING](#)

[EYE-HAND COORDINATION EXERCISE](#)



HOLDING THE PEN

Hold the Graphire3 pen like you would a pencil. Make sure the DuoSwitch is in a convenient location where you can toggle it with your thumb or index finger, but not accidentally press the switch while drawing. You can tilt the pen in any way that feels most comfortable for drawing.



Position for drawing



Position for erasing

Important: When the Graphire3 pen is not in use, place it in the pen storage compartment, the pen stand included with some product configurations, or lay it flat on your desk. To maintain the sensitivity of your pen tip, do not store the pen in a container where it will rest on its tip. Leaving a Graphire3 tool on the tablet may interfere with screen cursor positioning when using other pointing devices.

POINTING

The Graphire3 pen positions the pointer (or cursor) on your screen. You can position the screen cursor two different ways, like a pen (Pen Mode) or like a mouse (Mouse Mode).

- In Pen Mode, the tablet's active area is a mapped representation of your computer screen where every point on the tablet's active area corresponds to exactly one point on the display screen; wherever you place the pen on the tablet, the screen cursor will jump to the corresponding point on the screen. This is the default setting for the pen, and makes tracing possible—something you cannot do with a mouse.
- In Mouse Mode (the default setting for the Graphire3 Cordless mouse), you move the screen cursor with a “pick up and slide” motion similar to using a traditional mouse.

Try moving the screen cursor by lifting the pen and placing it in a new location on the tablet. The cursor instantly jumps to the new location.

As the pen enters [Proximity](#), the tablet senses the pen above the tablet surface. You do not need to touch the tablet with the pen tip in order to move the screen cursor.

Hints:

- If you are used to working with a mouse and find that using a pen is somewhat difficult, try the [Eye-Hand Coordination Exercise](#).
- Pointing is easier when you orient the tablet so the screen cursor follows the same direction as your hand movements on the tablet.



CLICKING

You typically click to highlight or select something on the screen, and double-click to open it.

Clicking. To click, tap the tablet once with the tip of the pen or press the pen tip on the tablet with enough force to register a click. (If **CLICK SOUND** is selected in the Pen Tablet control panel and your computer speakers are on, then you will hear a “click” sound when the pen tip is pressed hard enough to generate a mouse click. Adjust your speaker volume as necessary.) Try clicking on a folder icon by moving the screen cursor over the icon and pressing down on the pen tip. The icon should highlight when you press.

Double Clicking. To double-click, quickly tap the tablet twice in the same place with the pen tip. This is like clicking twice with a mouse button. You can also double-click by pressing the side switch – this is the preferred method of double-clicking with a pen. Try both ways of double-clicking on a folder icon to open it. First use your pen tip to do this, then use the side switch.

Hint: Press the upper side switch to double-click in Windows, or the lower side switch to double-click on Macintosh systems. This is easier than tapping twice with the pen tip.



USING THE SIDE SWITCH

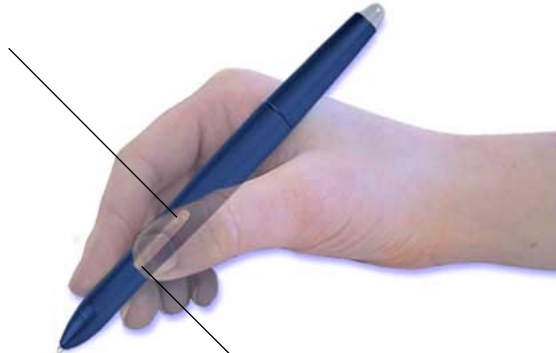
The Graphire3 pen is equipped with a DuoSwitch. This switch has two programmable functions that can be selected by rocking the switch in either direction. You can use the DuoSwitch whenever the pen tip is in [Proximity](#) of the tablet. You do not have to touch the pen tip to the tablet in order to use the switch.

Windows: The upper switch position is set to left double-click by default.

Macintosh OS X, v10.2: The upper switch position is set to INK TOGGLE by default.

Macintosh OS X, v10.1.5: The upper switch position is set to right-click by default.

Macintosh OS 9: The upper switch position simulates a CTRL function by default. Clicking with the pen tip while pressing the upper side switch will display a contextual menu.



By default, the lower switch is set for a right-click on Windows systems and for a double-click on Macintosh systems.

Macintosh OS 9: To simulate right-click functionality, set the side switch to MODIFIERS: CTRL+CLICK.

Hints:

- Press the upper side switch to double-click. (For Macintosh systems, press the lower side switch.) This is easier than tapping twice with the pen tip.
- Use right-click to bring up application-specific or icon-specific menus.

To assign new switch functions, see [Customizing the Side Switch](#).

DRAGGING

Dragging is used to select and move objects on the screen. To drag, first point to an object. Then press the pen tip to the tablet and slide it across the tablet surface. The selected object will move across the screen. To select text, move the screen cursor to the beginning of a text line, then drag the pen across the tablet until the text is highlighted.

First, try moving an icon on the screen. Then, within a document, select some text by pressing and dragging the pen tip across the text.



PROXIMITY

The pen is activated as soon as it nears the surface of the tablet's active area. This is known as entering tablet proximity, and allows you to position the screen cursor or use the side switch without touching the pen tip to the tablet. You can also trace a drawing or photograph as long as the pen tip remains within proximity height of the tablet surface.

Place a picture either on top of or beneath the photo frame cover and try tracing it from within one of your graphics applications. (The thickness of the item to be traced or digitized should be 1 mm or less.) See [Changing the Tablet Underlay](#) for details on placing an image beneath the photo frame cover.

When positioning the screen cursor and operating the side switch, the pen tip needs to be within 5 mm (0.20 inch) of the tablet surface, average.

When drawing or clicking, the pen tip needs to be within 1 mm (0.04 inch) of the tablet surface.

The Cordless Mouse works similarly to the pen, and can only be used on the tablet's active area. For the Cordless Mouse, proximity is approximately 1 - 2 mm (.04 - .08 inch).



DRAWING WITH PRESSURE

The Graphire3 pen responds to the nuance and inflection of your hand movements, enabling you to create natural-looking pen and brush strokes. Many graphics applications have drawing tools that respond to the pressure you place on the pen. For example, in some drawing programs sliders are used to vary brush characteristics (width, color, and opacity). These characteristics can be controlled much better by the pen's pressure-sensitivity. You can vary line width, blend colors, and change opacity with the pressure you exert upon the pen.

To draw with pressure-sensitivity, select a pressure-sensitive tool from your application's tool palette. Draw along the surface of the tablet while applying various amounts of pressure downward on the tip of the pen. Press hard for thick lines or dense color. Press gently for thin lines or softer color. To adjust the tip feel, see [Adjusting Tip and Eraser Feel](#).



Visit our web site for a list of graphics applications that support pressure. See [Product Information](#).

ERASING

The eraser on the Graphire3 pen works like the eraser on a pencil. In graphics applications that support the pen's eraser, you can erase intuitively and naturally. When you use the pen's eraser, the application will automatically switch to the eraser tool. In applications that support pressure-sensitivity, you can select pressure-sensitive tools in an application's tool palette to vary the width and depth of your erasures as you change the amount of pressure you exert upon the pen.

You can also use the eraser in many standard office applications. The eraser will not be pressure sensitive in these applications, but you can use it to select and delete text or spreadsheet cells.



Try your eraser by opening Notepad (Windows) or Simple Text (Macintosh) and typing a few words. Use the eraser to select the text. When you lift the eraser, the text will be erased. For further information on using your eraser, see [Adjusting Tip and Eraser Feel](#).

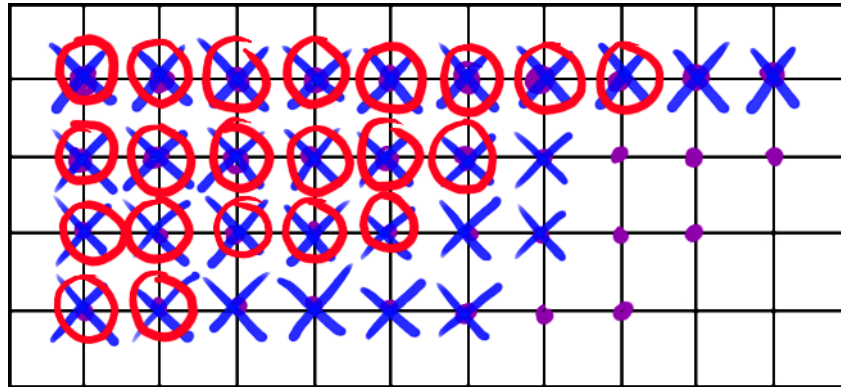
Visit our web site for a list of graphics applications that support the eraser (see [Product Information](#)). If the eraser is not supported in an application, you can still use the eraser for navigating and drawing.

EYE-HAND COORDINATION EXERCISE

If you use a mouse, you may remember how long it took to get used to positioning the screen cursor. Your Graphire3 pen, likewise, will take a bit of practice to master the technique of positioning the screen cursor in [Pen Mode](#). This may seem difficult at first, but it is more natural and faster than in [Mouse Mode](#).

This exercise is designed to retrain your eye-hand coordination for using the pen:

1. Open any graphics application. Use the line tool to draw a rectangular grid with line spacings of about 20-25 mm (3/4 to 1 inch). You can use your traditional mouse to do this.
2. Choose a free-hand tool in your application and use the pen to draw a dot at each grid intersection.
3. Draw an X at each grid intersection.
4. Now draw a circle around each intersection. Your screen should look like this:



5. Clear your screen and make a simple drawing of your own. The more you use your pen, the easier drawing and navigation will become.

USING THE CORDLESS MOUSE

The Graphire3 Cordless Mouse is batteryless and works on your Graphire3 tablet. By moving the Cordless Mouse across the tablet's active area, you can position the screen cursor like you do with a regular mouse. The buttons are programmable, and the integrated fingerwheel is both a programmable middle button and a rolling wheel for scrolling. By default, the rolling fingerwheel provides a line scrolling capability in most applications. See [Using the Cordless Mouse Fingerwheel](#).

Integrated middle button and fingerwheel. By default, the button function is set to MIDDLE CLICK and the fingerwheel is set to SCROLL 3 lines per wheel notch.

Macintosh OS 9: By default, the button function is set to DOUBLE CLICK and the fingerwheel is set to SCROLL 3 lines per wheel notch.

Important: When not using the Cordless Mouse, place it on your desk. Leaving a Graphire3 tool on the tablet may interfere with screen cursor positioning when using other pointing devices, or prevent your computer from going to sleep.

The right button is set to RIGHT-CLICK by default.

Macintosh OS 9: The button is set to MODIFIERS: CTRL+CLICK by default.



By default, the left button is set to LEFT-CLICK on Windows systems, and single CLICK on Macintosh systems.

Hint: For MS Office applications (MS Office 97 and greater) that support a wheel mouse, press the CTRL key and move the fingerwheel to zoom in and out.

Note: The Cordless Mouse that came with your Graphire3 tablet will not work on any other tablet model, including tablets from the Graphire or Graphire2 series. (Note also that the Cordless Mouse is not available with some product configurations.)

To learn how to program buttons, see [Customizing the Cordless Mouse](#).

USING THE CORDLESS MOUSE FINGERWHEEL

To use the fingerwheel, place your hand on the Graphire3 Cordless Mouse with your index finger on the wheel.

- **Button function.** Press down on the wheel to perform a button click.
- **Scrolling.** Move the fingerwheel forward to scroll up, and back to scroll down. By default, the fingerwheel is set to SCROLL 3 lines for each notch of wheel movement in applications that support the fingerwheel function.



WORKING WITH THE TABLET

Think of the tablet's active area as a mapped representation of your computer screen. Wherever you place your pen on the tablet's active area, the screen cursor will jump to the corresponding point on the screen. For example, when you position your pen tip in the upper right corner of the tablet, the cursor appears in the upper right corner of your screen. This is called "absolute positioning" and makes tracing possible – something you cannot do with a mouse. As you work with Graphire3, you can rest your hand on the tablet surface, just as if it were a drawing board or piece of paper.

Your tablet comes with a transparent photo frame cover used to protect your favorite photos or artwork. See [Changing the Tablet Underlay](#) and [Creating a New Tablet Underlay](#) for details on this feature.



Your tablet also comes with an integrated pen storage compartment. When you are not using the Graphire3 pen, you can reach behind the tablet and press the pen into the storage compartment or lay it flat on your desk. Leaving a Graphire3 tool on the tablet may interfere with screen cursor positioning when using other pointing devices.



If your product came with a pen stand, you can use it to store the pen between tasks. This also makes the pen available for quick, easy access when you are working.

CHANGING THE TABLET UNDERLAY

Your tablet comes with a printed underlay that can be seen through the transparent photo frame cover. You can replace the underlay with a favorite photo or design of your own by following these steps:

1. Using your fingernail, carefully unsnap the photo frame cover from either the left or right side of the tablet and remove it.
2. Lift away the printed underlay and replace it with a new photo or design of your choosing.
3. When you are done, carefully replace the photo frame cover by inserting the tabs on the cover into one side of the tablet and gently pressing down on the opposite side until both tabs lock into place. This will protect your photo or design as you work on the tablet.

If you would like to customize the look of Graphire3 with your own artwork or photos, see [Creating a New Tablet Underlay](#).

Note: You can trace or digitize an image either by placing it on top of or beneath the photo frame cover. The thickness of the item to be traced or digitized should be 1 mm or less.

If you will be placing your image beneath the photo frame cover for tracing, first remove the photo frame cover and position the image to be traced so that it fits within the active drawing area of the tablet. Then replace the photo frame cover and begin tracing in your favorite graphics application.



CREATING A NEW TABLET UNDERLAY

If you would like to create an entirely new image that you can use for the tablet underlay, you can use the templates provided on the Wacom Tablet CD as a starting point:

1. Insert the Wacom Tablet CD into your computer and locate the `TEMPLATES` folder.
2. Open the folder to access the template files. Template files are available for both the 4x5 / A6 and 6x8 / A5 tablets, and come in various formats that can be modified within any graphics application that supports .tif, .psd, or .eps formatted files.
3. Choose one of the predesigned templates or use a blank template to create your own design.
4. When you are done, print out your new tablet underlay. Use photo-quality paper for best results.
5. Trim the new underlay to size and place it beneath the tablet photo frame cover. See [Changing the Tablet Underlay](#).



CUSTOMIZING

After you master the basics of using your Graphire3 pen and mouse set, you may want to customize the way the pen or Cordless Mouse works. This chapter describes how to use the Pen Tablet control panel to adjust your Graphire3 tablet and tool settings.

[OPENING THE CONTROL PANEL](#)
[CONTROL PANEL BASICS](#)
[CONTROL PANEL DETAILS](#)

OPENING THE CONTROL PANEL

To open the Pen Tablet control panel, use the Graphire3 tool you wish to customize on the tablet:

Windows. Click on the Windows START button and choose ALL PROGRAMS. (For versions other than Windows XP, choose the PROGRAMS group.) Then select PEN TABLET and choose the PEN TABLET control panel option.

Macintosh. For OS X, open SYSTEM PREFERENCES from the Apple menu or from the APPLICATIONS folder. Then click on the PEN TABLET icon. (For OS 9, from the Apple menu CONTROL PANELS choose PEN TABLET.)

After you have opened the Pen Tablet control panel, you can begin customizing Graphire3.

Note: When more than one Graphire tablet is installed on a single computer, any changes made in the Pen Tablet control panel will be applied only to the tablet that was used when opening the Pen Tablet control panel.



CONTROL PANEL BASICS

Use the Pen Tablet control panel to customize your Graphire3 pen and mouse set. The control panel tabs allow you to customize your tablet, pen, and Cordless Mouse. When you change a setting, your changes take effect immediately.

If you are using a Windows system, you can also use keyboard shortcuts to select a tab. To select a tab in this manner, hold down the ALT key and press the key corresponding to the letter underlined on the tab.

Balloon Help provides quick information and useful tips, and is available for most control panel items. Simply position the screen cursor over an item and let it rest there; in a few moments the balloon help will pop up. For Macintosh, you will need to turn Balloon Help on by selecting SHOW BALLOONS from the Macintosh Finder HELP menu.

As you explore the control panel tabs, experiment with different settings to find what works best for you. You can always click DEFAULT to return to the factory settings. (For Windows systems you can also use the ALT+D keyboard shortcut.)

[CUSTOMIZING THE PEN](#)

[CUSTOMIZING THE CORDLESS MOUSE](#)

[CUSTOMIZING THE POP-UP MENU](#)



CUSTOMIZING THE PEN

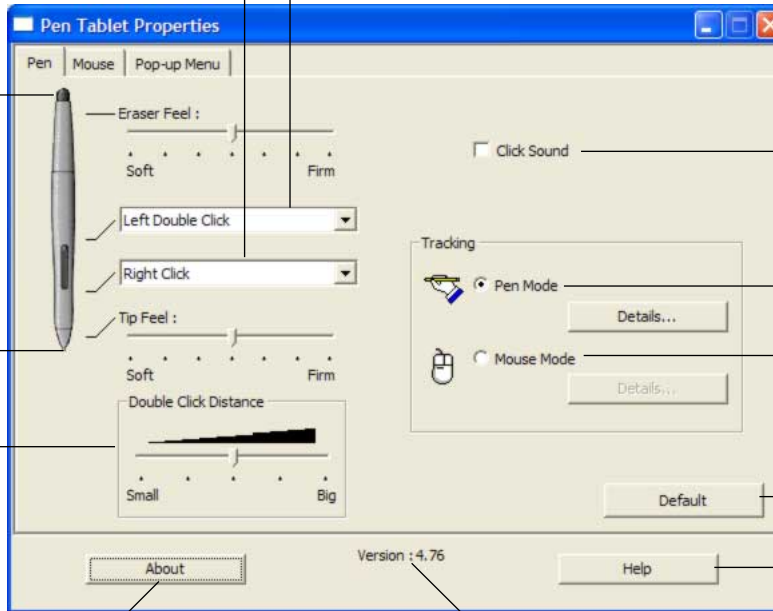
Selects the side switch [Button Functions](#).

Customizes the [amount of pressure](#) needed to erase with the pen.

Customizes the [amount of pressure](#) needed to click or draw with the pen.

Adjusts the size of the [double-click](#) area.

Displays information about the control panel and driver.



Closes the control panel.

When checked, an audible "click" sound will be heard whenever a pen click occurs and your computer speakers are turned on.

Moves the screen cursor to correspond with the position of the pen on the tablet. Click DETAILS... to customize the [tablet mapping](#).

Moves the screen cursor like a mouse. Click DETAILS... for [Setting Mouse Speed](#).

Returns the PEN tab settings to their factory defaults.

Displays this User's Manual.

Software driver version.

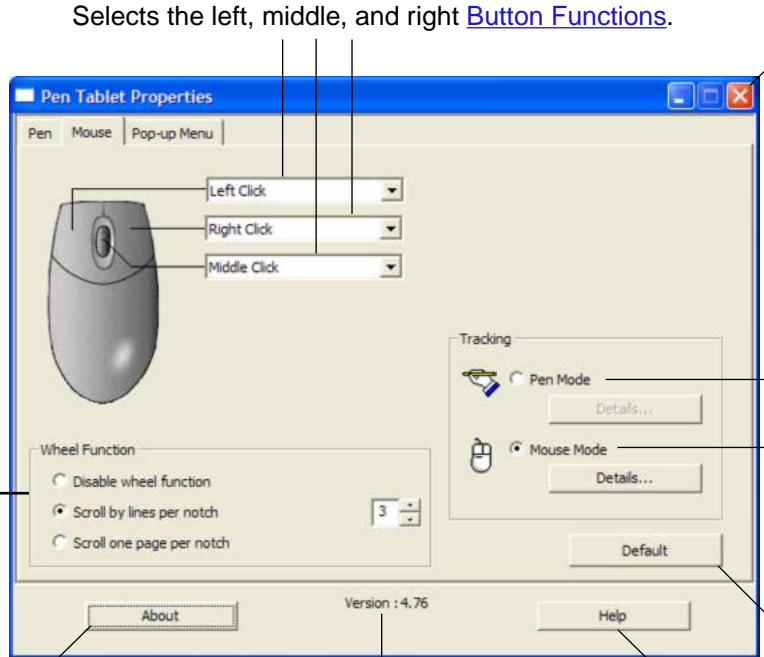
Note: The MOUSE tab will not display until you have used a Cordless Mouse on the tablet.



CUSTOMIZING THE CORDLESS MOUSE

You can set the buttons on the mouse to a variety of functions. Just select an option from the pull-down menus. Your changes take effect immediately. The Cordless Mouse buttons are chordable; you can press two or more buttons simultaneously and the functions will occur. For example, if you set one button to SHIFT and another button to CLICK, when you press both buttons a SHIFT+CLICK will occur.

Use these options to customize the fingerwheel. You can disable the fingerwheel function, set the fingerwheel to scroll a selected number of lines (1 to 15) for each notch of wheel movement, or set the fingerwheel to scroll one page for each notch of wheel movement.



Selects the left, middle, and right [Button Functions](#).

Closes the control panel.

Moves the screen cursor to correspond with the position of your Cordless Mouse on the tablet. Click [DETAILS...](#) to customize the [tablet mapping](#).

Moves the screen cursor like a mouse. Click [DETAILS...](#) for [Setting Mouse Speed](#).

Returns the MOUSE tab settings to factory defaults.

Displays this User's Manual.

Displays information about the control panel and driver.

Software driver version.



CUSTOMIZING THE POP-UP MENU

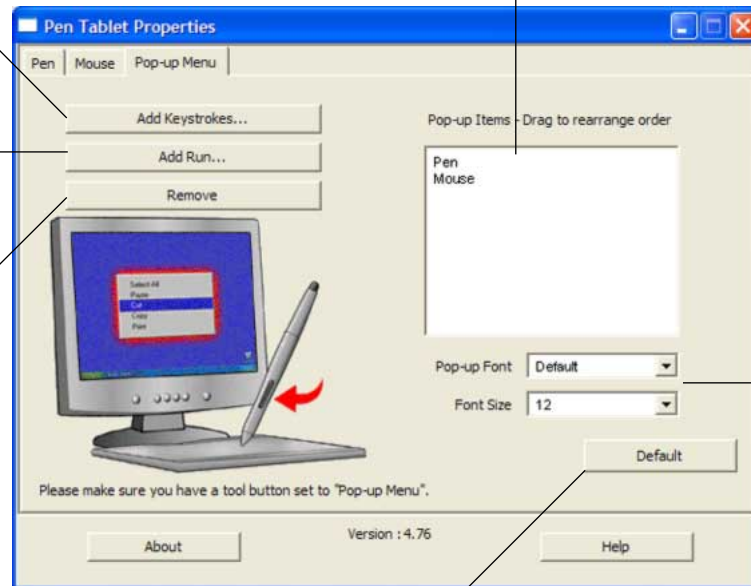
Use the POP-UP MENU tab to define the available functions on the Pop-up Menu list. To display the Pop-up Menu, set one of your tool buttons to the POP-UP MENU function. Whenever you press that button, the Pop-up Menu is displayed. Select items in the Pop-up Menu by clicking on them. To close the Pop-up Menu without making a selection, click outside of the Pop-up Menu.

Enables you to add a keystroke macro to the Pop-up Menu list. When you click on the ADD KEYSTROKES... button a [dialog box](#) will appear where you can enter a keystroke or keystroke sequence to play back.

Opens a [dialog box](#) where you can select a specific application to launch from the Pop-up Menu.

Removes the selected item from the list.

Displays a list of functions that will appear in the Pop-up Menu. To change the order of an item, drag it to a new location.



Returns all settings to their default values.

Warning: This will delete all Pop-up Menu items that have been defined.

CONTROL PANEL DETAILS

Once you have mastered the basics of customizing your Graphire3 pen and mouse set, you may want to learn more. Use this section as a reference when working with the Pen Tablet control panel; it provides detailed information about each tab and some of the more complex topics. Many of the sections also contain useful customizing tips.

[ADJUSTING TIP AND ERASER FEEL](#)

[ADJUSTING DOUBLE-CLICK](#)

[CUSTOMIZING THE SIDE SWITCH](#)

[BUTTON FUNCTIONS](#)

[TABLET TRACKING](#)

[MAPPING TO MULTIPLE MONITORS](#)

[PORTION OF SCREEN](#)

[PORTION OF TABLET](#)

[SETTING MOUSE SPEED](#)



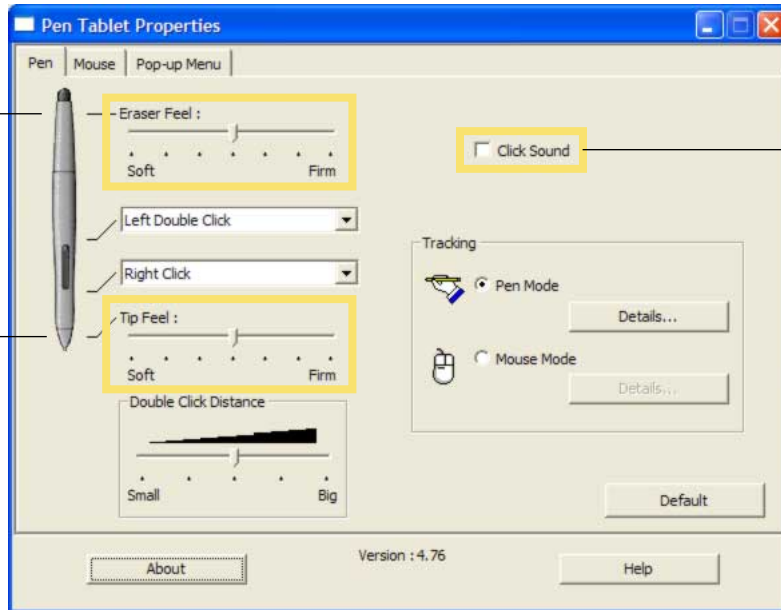
ADJUSTING TIP AND ERASER FEEL

The TIP FEEL slider adjusts the sensitivity of the pen tip. To create broad brush strokes or to click with a light touch, use a soft tip setting. For maximum control while drawing thin lines, use a firm tip setting.

The ERASER FEEL slider adjusts the sensitivity of the pen eraser. To erase with broad strokes or a light touch, use a soft eraser setting. Use a firm eraser setting for maximum control.

Customizes the amount of pressure needed to erase with the pen. Drag the slider to a softer or firmer setting.

Customizes the amount of pressure needed to click or draw with the pen. Drag the slider to a softer or firmer setting.



When checked, an audible “click” sound will be heard whenever a pen click occurs and your computer speakers are turned on.

Hints:

- Use a soft TIP FEEL setting for a wider range of pressure values with most pressure-sensitive applications.
- In some applications, a soft pressure setting can make the pen overreact – any small press on the pen is magnified on the screen. If you experience this, try a firmer TIP FEEL setting.



ADJUSTING DOUBLE-CLICK

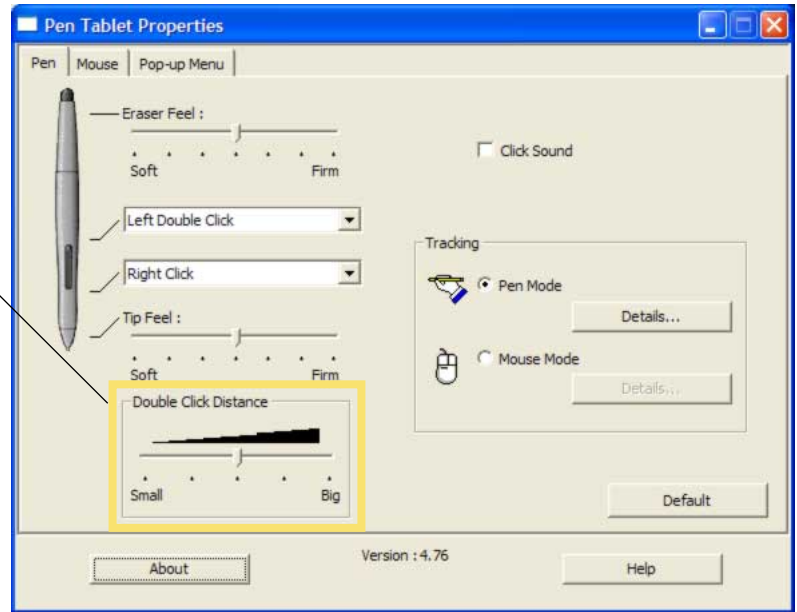
Double-clicking with the pen tip can be made easier by expanding the tap area that accepts a double-click (the double-click distance), or by setting the pen's side switch to automatically double-click when pressed. A large double-click distance may adversely affect your brushstrokes in some drawing applications. If you notice such effects, try setting a smaller double-click distance and using the side switch to double-click.

Adjusts the size of the double-click area and the double-click speed. A larger setting makes double-clicking easier.

Hint: On Windows systems you can make navigating with the pen easier by configuring Windows to select when the pen is over an icon and to launch the icon with a single click.

To turn on this feature for Windows Me, 2000, or XP: Open a folder, select the TOOLS pull-down menu, and FOLDER OPTIONS.... From the GENERAL tab select the option SINGLE-CLICK TO OPEN AN ITEM (POINT TO SELECT).

For Windows 98, open a folder and select the VIEW pull-down menu. Then choose FOLDER OPTIONS.... From the GENERAL tab select the WEB STYLE option.

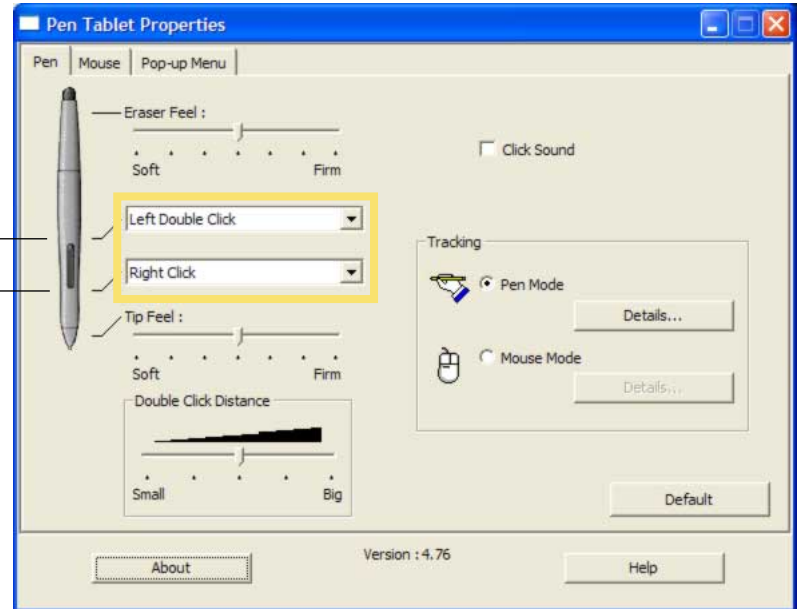


CUSTOMIZING THE SIDE SWITCH

You can set the DuoSwitch on the pen to simulate a variety of mouse button functions. Just select an option from the pull-down menu for either the upper or lower side switch. Your changes take effect immediately. When you bring the pen tip into proximity without touching the tablet and press the upper or lower side switch, the selected function occurs.

Select [Button Functions](#) to perform when pressing the upper or lower side switch.

Hint: To make double-clicking easier, set the side switch to double-click automatically by selecting LEFT DOUBLE-CLICK in Windows, or DOUBLE-CLICK on Macintosh systems.



BUTTON FUNCTIONS

The pen side switch and Cordless Mouse buttons each have a pull-down menu that allows you to choose the function that will be performed when the button is pressed. The following list describes the available functions. Some options, however, are not available for all buttons.

- **LEFT-CLICK.** (Windows.) Default setting for the pen tip. This option simulates a left mouse button click.
- **CLICK.** (Macintosh.) Default setting for the pen tip. This option simulates a mouse button click.
- **LEFT DOUBLE-CLICK.** (Windows.) Default setting for the upper position of the side switch. Simulates a left mouse button double-click. For easier double-clicking, use this function instead of tapping twice with your pen.
- **DOUBLE-CLICK.** (Macintosh.) Default setting for the lower position of the side switch. When this option is selected, pressing the switch simulates a mouse button double-click. For easier double-clicking, use this function instead of tapping twice with your pen tip.
- **RIGHT-CLICK.** (Windows and Macintosh OS X, v10.1.5.) This is the default setting for the lower position of the side switch in Windows, and for the upper position of the side switch on Macintosh systems running OS X, v10.1.5. This simulates a right mouse button click.
- **MIDDLE-CLICK.** (Windows and Macintosh OS X.) Simulates a middle mouse button click.
- **LEFT CLICK-LOCK.** (Windows.) Simulates holding down the left mouse button. Press the tool button once to initiate click lock. Press the button again to release click lock. Click lock is useful for dragging objects or selecting blocks of text.
- **CLICK-LOCK.** (Macintosh.) Simulates holding down a mouse button. Press the tool button once to initiate click lock. Press the button again to release click lock. Click lock is useful for dragging objects or selecting blocks of text.



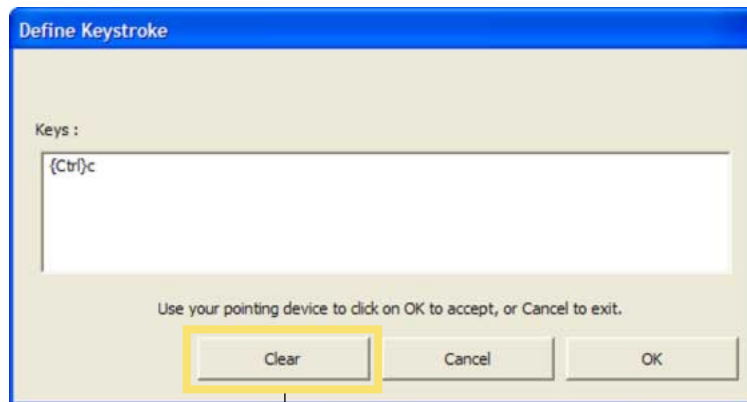
- **KEYSTROKE....** Enables you to simulate a series of keystrokes. Selecting this option displays the DEFINE KEYSTROKE dialog box where you can enter a keystroke or keystroke sequence to play back.

Keystroke combinations can include letters, numbers, function keys (such as F3) and modifier keys (such as SHIFT, ALT, or CTRL for Windows, or SHIFT, OPTION, COMMAND, and CTRL for Macintosh).

Important: Because the ENTER (Windows) and RETURN (Macintosh) keys can be selected as a defined keystroke, they cannot be used to select OK. You must use your pen or mouse to click on the OK button.

After defining a keystroke sequence, click OK.

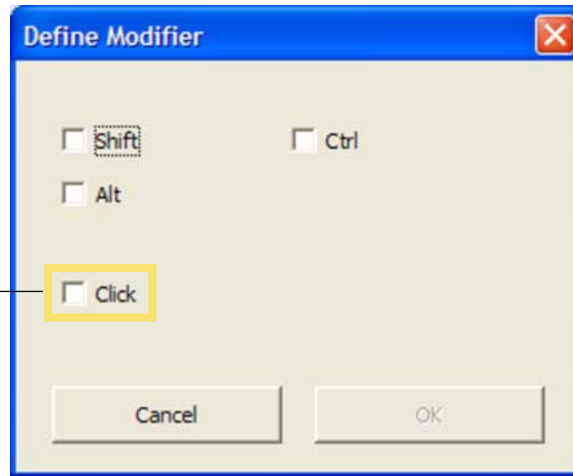
Note: When you assign a KEYSTROKE... sequence to the Pop-up Menu, you are prompted to enter a keystroke name that will be displayed in the Pop-up Menu list.



If you make a mistake, click here to CLEAR the KEYS: entry block.

- **MODIFIER....** Enables you to assign modifier key(s) (such as SHIFT, ALT, or CTRL for Windows, or SHIFT, OPTION, COMMAND, and CTRL for Macintosh). Many applications use modifier keys to constrain the size or placement of objects. Selecting this option displays the DEFINE MODIFIER(S) dialog box where you can assign one or more modifier key functions.

Select the CLICK box plus one or more modifier key options if you want a mouse click to happen whenever you press the tool button.



Windows screen capture shown.

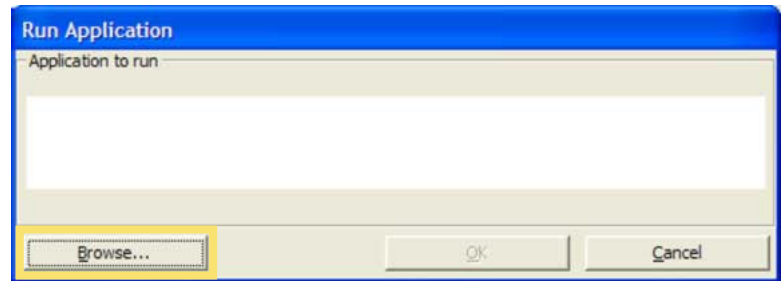
- **PRESSURE HOLD.** (Pen only.) Sets the button so that, when pressed, the pressure is locked at the current pressure level until the button is released. For example, you can paint with pressure-sensitivity until you reach the brush size that you like. You can then press the button and continue painting with the same size brush until the button is released.



- **MODE TOGGLE....** Toggles between [Pen Mode](#) and [Mouse Mode](#). When setting a tool button to MODE TOGGLE..., a dialog box displays allowing you to adjust the mouse acceleration and speed. See [Setting Mouse Speed](#) for details.
- **Ink Toggle.** (Pen and Macintosh OS X, v10.2 or greater only.) Lets you use your pen to toggle the INK ANYWHERE function of Inkwell on and off. Note that Ink must be turned on for this button function to work.
- **POP-UP MENU.** Displays a Pop-up Menu on your screen. See [Customizing the Pop-up Menu](#) for more information.
- **ERASE.** (Pen only.) Sets a button so that when the button is pressed, the pen tip will act like the eraser in applications that support the ERASE function. See [Erasing](#) for information on using the eraser.
- **RUN....** Opens a dialog box where you can select a specific application, file, or script to launch.

Click BROWSE... to locate an application to launch. The selection you make appears in the APPLICATION TO RUN block. Click OK to accept the selection. The dialog box will close and the RUN... option will be assigned as your tool button option.

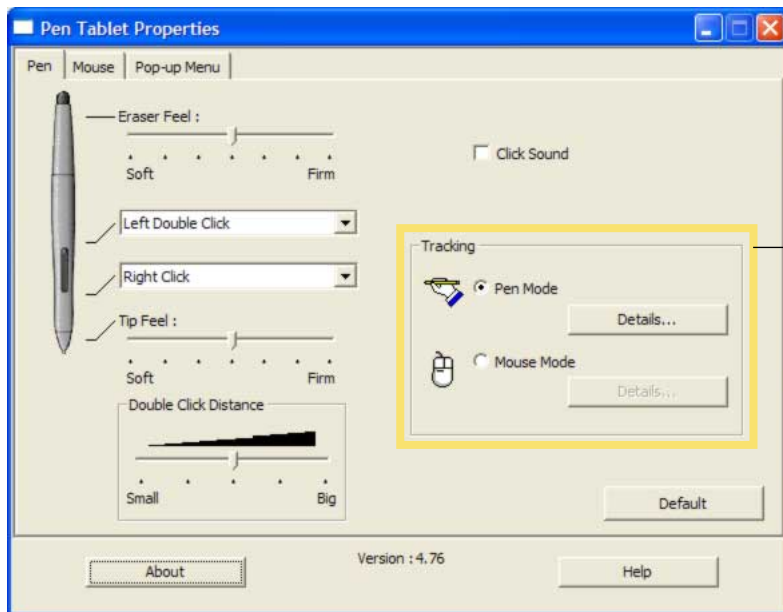
The next time you press the tool button, the defined application will launch.



- **IGNORED.** Disables the button function.

TABLET TRACKING

The tablet TRACKING options enable you to determine the relationship between pen (or Cordless Mouse) movement on the tablet surface and cursor movement on the monitor screen. By default the entire active area of the tablet maps to the entire monitor. If more than one monitor is in use the tablet will map to all monitors. See [Mapping to Multiple Monitors](#).



The TRACKING mode you select controls how the screen cursor moves:

- Select PEN MODE to set the cursor so that its movement corresponds with the position of your Graphire3 tool on the tablet – wherever you place your tool on the tablet, the cursor will jump to a corresponding point on the screen. This is known as absolute positioning, and is required for tracing. Click DETAILS... to customize the [tablet mapping](#).
- Select MOUSE MODE to move the screen cursor with a “pick up and slide” motion similar to using a traditional mouse. Click DETAILS... for [Setting Mouse Speed](#).

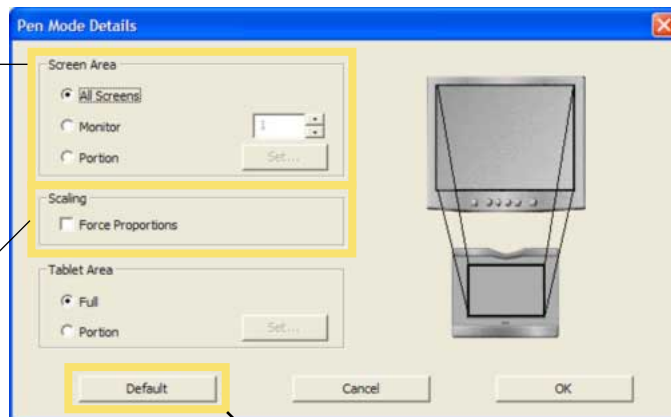
By default, the pen is set to PEN MODE, and the Cordless Mouse is set to MOUSE MODE for navigation.

Note: If you frequently switch between PEN MODE and MOUSE MODE, you can assign the MODE TOGGLE... function to one of your tool buttons.

When you click on the PEN MODE DETAILS... button, the PEN MODE DETAILS dialog box is displayed.

Use the SCREEN AREA options to select a screen area for tablet to screen mapping.

- ALL SCREENS. The entire monitor(s) area is mapped; this is the default setting. See [Mapping to Multiple Monitors](#) for more information.
- MONITOR. The entire area of a single monitor that you choose is mapped.
- PORTION. A portion of the desktop area is mapped. Click SET... to open a dialog box where you can set the [portion of screen](#) area.



MAINTAIN PROPORTIONS. Check or uncheck the box to select a tablet to screen mapping relationship.

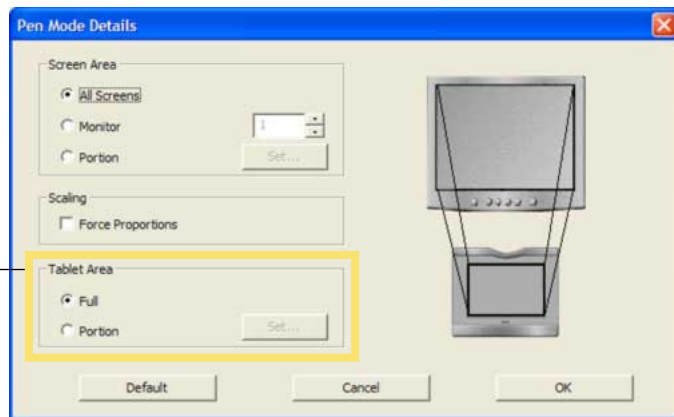
- When unchecked, the correct scale or proportions are not maintained. The selected tablet area is mapped to the selected display area. A traced image may appear stretched, and may be smaller or larger than the original image. This is the default setting.
- When checked, the correct vertical and horizontal proportions are maintained between the tablet and display. A traced image appears proportionally correct on your display, but may be smaller or larger than the original image. Depending on your settings, some portions of the tablet active area may no longer be usable when this option is selected.



Returns settings to their factory defaults.

Use the TABLET AREA options to select a tablet area for tablet to screen mapping.

- FULL. The entire active area of the tablet is mapped. This is the default setting.
- PORTION. A portion of the tablet area is mapped. Click SET... to open a dialog box where you can set the [portion of tablet](#) area.



MAPPING TO MULTIPLE MONITORS

When you are working with more than one monitor, Graphire3 will map to the monitors based upon how your system is configured. By default, if more than one monitor is in use and you are in extended monitor mode, the tablet will map to all monitors as if they were one large display. If you are in mirror mode, the tablet will map to the entire space on each monitor and the screen cursor will be displayed on each monitor simultaneously.

Please refer to your hardware and operating system documentation for details on configuring your computer and operating system for use with multiple monitors.

After you have correctly configured your computer for use with multiple monitors, you can then adjust the tablet mapping by opening the Pen Tablet control panel and changing the appropriate options.

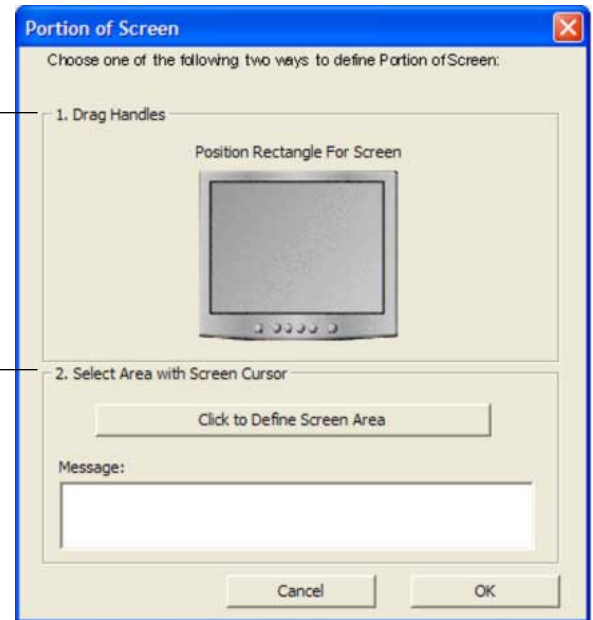
PORTION OF SCREEN

The PORTION OF SCREEN dialog box enables you to define which portion of the display screen your tablet will map to. After defining a portion of the screen, you may need to use a different input device to access other portions of the screen area.

Drag corners of the foreground graphic to select the screen area. The background graphic represents the entire screen area.

Move the screen cursor to select the screen area. Select the CLICK TO DEFINE SCREEN AREA button.

As you define PORTION OF SCREEN, follow any MESSAGE prompts to set the portion of your display screen that will be used for mapping.



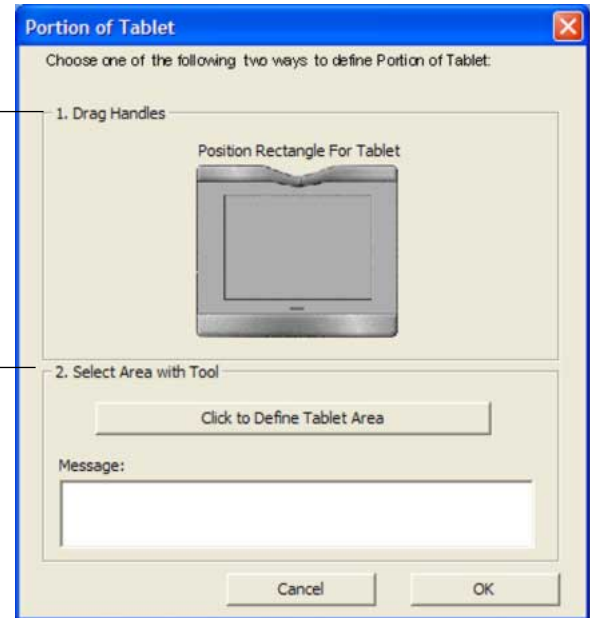
PORTION OF TABLET

The PORTION OF TABLET dialog box enables you to select a portion of the tablet's active area for tablet to display mapping.

Drag corners of the foreground graphic to select the tablet area that will be mapped to your selected screen area. The background graphic represents the tablet.

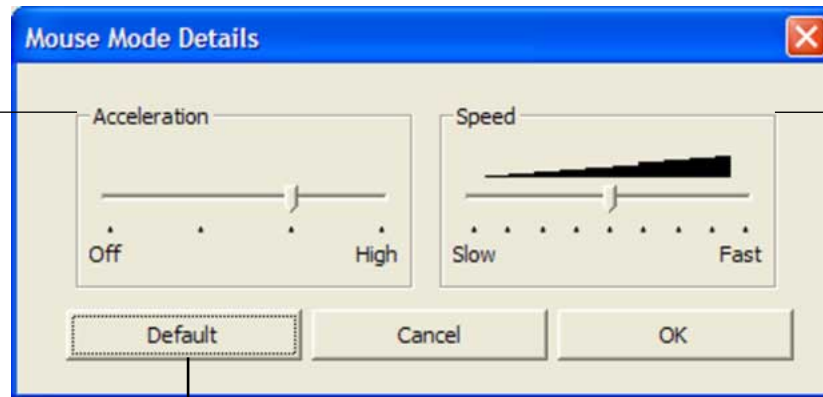
Use your tool on the tablet to select the tablet area. Select the **CLICK TO DEFINE TABLET AREA** button.

As you define PORTION OF TABLET, follow any MESSAGE prompts to set the portion of your tablet that will be used for mapping.



SETTING MOUSE SPEED

To change the screen cursor acceleration and speed when in MOUSE MODE, click on the MOUSE MODE DETAILS... button (located on the PEN or MOUSE tabs) to display a dialog box where you can make your adjustments.



Sets the screen cursor acceleration when in MOUSE MODE.

Sets the screen cursor tracking speed when in MOUSE MODE.

Returns settings to their factory defaults.

Note: The dialog box will also appear when you first set a tool button to MODE TOGGLE....

TROUBLESHOOTING

Most of the time your tablet will work flawlessly. But if you are having trouble, Wacom recommends you do the following:

1. If the Wacom tablet driver failed to load properly, first perform the recommended action in any error message that may appear on your screen. If that does not solve the problem, refer to the troubleshooting procedures in this chapter.
2. Look in the [Troubleshooting Tables](#). Your problem may be described there and you can try the solution offered.
3. Open the Wacom tablet Read Me file for late-breaking information.
4. If you are having a compatibility conflict between Graphire3 and a new hardware or software product, check if a newer Wacom tablet software driver is available. See [Obtaining Driver Downloads](#) for information on downloading an updated software driver. Wacom periodically updates the software driver to maintain compatibility with new products.
5. Check the FAQs (Frequently Asked Questions) on the Wacom web site for your region.
6. If you have tried the suggestions in this manual and still cannot resolve the problem, then contact Wacom for Technical Support. See the Read Me file for information on where to obtain support for your region.

[TESTING YOUR TABLET](#)
[TROUBLESHOOTING TABLES](#)
[TECHNICAL SUPPORT OPTIONS](#)



TESTING YOUR TABLET

Make sure your computer is turned on, the operating system has finished loading, and the tablet is properly connected to an active USB port. Then try the following tests:

1. **Check the tablet.** The tablet's orange status LED will light whenever the tablet is properly connected and your computer has registered it as a USB device. If the LED is on, continue with step 2.

If the tablet status LED does not glow when the computer is on and the system has fully loaded, then:

- Make sure the tablet USB cable is securely connected to an active USB port on your computer.
- If you are connecting the tablet to a USB hub (or hub device such as a keyboard with USB ports), be sure the USB hub is properly connected to your computer and is active.
- Connect the tablet to a different USB port or try connecting to the USB port on another computer.

If the tablet's status LED does not illuminate after your computer is on and has finished booting up, your USB port may be disabled. Verify that you have connected the tablet to an active USB port.



2. **Check the pen.**

- Move your pen across the active area of the tablet; the screen cursor should move in the corresponding direction on your monitor.
- Press the pen tip against the surface of the tablet. The tablet status LED should turn from orange to green.
- Next, without applying pressure to the pen tip, hold the pen tip within approximately 5 mm (0.20 inch) of the tablet surface and press the side switch. The status LED should again change from orange to green.
- Turn the pen over and press the eraser against the surface of the tablet; the status LED should change from orange to green.

3. **Check the Cordless Mouse.**

- Move the Cordless Mouse across the active area of the tablet; the screen cursor should move in the corresponding direction on your monitor.
- Test the buttons on your Cordless Mouse by clicking each button. The tablet's status LED should turn green when a button is pressed. If not, you may have a defective Cordless Mouse or tablet. See [Technical Support Options](#).



TROUBLESHOOTING TABLES

If you encounter problems with your Graphire3 tools or tablet, refer to the following tables. Your problem may be described here, and you can try the solution offered. Be sure you refer to the Read Me file for the latest information updates.

[GENERAL PROBLEMS](#)

[WINDOWS-SPECIFIC PROBLEMS](#)

[MACINTOSH-SPECIFIC PROBLEMS](#)

GENERAL PROBLEMS

The computer does not have an available USB port.

Check if there is an available USB port on a USB hub device. If none are available you will need to add a USB hub.

The tablet status LED is off.

Verify that your tablet's USB cable is properly connected to an active USB port. If you are connecting to a USB hub device, make sure the hub is connected to an active USB port and that the hub is active.

The pen works only in Mouse Mode, and does not draw with pressure-sensitivity.

The tablet driver software was not installed or did not load properly. Make sure the tablet driver software is installed and functioning. Insert the Tablet CD into your computer and install the driver software for the tablet.

Clicking is difficult.

Set the TIP FEEL slider to a softer setting.

Select the CLICK SOUND option (the check box should be checked) so that you can hear when the pen registers a mouse click. Note that your computer speakers must be turned on and the volume audible before you can hear CLICK SOUND.



[CONTENTS](#)

[TROUBLESHOOTING](#)

[INDEX](#)



Double-clicking is difficult.

Be sure you are quickly tapping the tablet twice in the same place on the tablet's active area.

Using the side switch to double-click is recommended (review the techniques in [Clicking](#)). See also [Customizing the Side Switch](#).

Try increasing the DOUBLE-CLICK DISTANCE (see [Adjusting Double-Click](#)).

Try using a lighter TIP FEEL (see [Adjusting Tip and Eraser Feel](#)).

Try setting your system to launch programs with a single click. See [Adjusting Double-Click](#).

The pen selects everything, will not stop drawing.

Open the Pen Tablet control panel. Move the TIP FEEL slider toward FIRM.

The eraser selects everything or will not stop erasing.

Open the Pen Tablet control panel. Move the ERASER FEEL slider toward FIRM.

You notice a screen delay at the beginning of pen strokes.

In the Pen Tablet control panel, try decreasing the DOUBLE-CLICK DISTANCE (see [Adjusting Double-Click](#)).

You have to press hard with the pen when clicking or drawing.

Open the Pen Tablet control panel. Move the TIP FEEL slider toward SOFT.

The pen tip does not function.

Make sure the status LED changes from orange to green when the pen tip is pressed to the tablet surface. If it does not, you may have defective hardware (see [Testing Your Tablet](#)).



The side switch does not work.

Be sure you press the side switch when the pen tip is in proximity – do this without pressing down on the pen tip.

From the Pen Tablet control panel, verify that the side switch is set to the function you are expecting to occur.

Make sure the tablet status LED changes from orange to green when you press the side switch. If it does not, you may have defective hardware (see [Testing Your Tablet](#)).

Changing the function settings for the Graphire3 tools has no effect.

Make sure that you change the settings for the tool that you are using. See [Customizing the Pen](#) or [Customizing the Cordless Mouse](#).

The screen cursor jumps back when using your regular mouse or trackball.

Do not place the pen or Cordless Mouse on the tablet when they are not in use, or when you are using another pointing device. Leaving your tool on the tablet may interfere with screen cursor positioning when using other input devices.



Cannot move the cursor where you want to on the screen, or the line you are drawing does not line up with the location of the pointer in paint applications.

Open the Pen Tablet control panel. Verify that PEN MODE is selected. If this does not help, click on the DEFAULT button to reestablish the default tablet to screen mapping. If this does not work:

Windows: Do a Search or Find for the TABLET.DAT file and delete it. The file should be in your Windows or Windows\System32 folder. Then restart your computer. When the tablet driver loads, it will create a new preferences file with the factory default settings.

Macintosh OS X, v10.1.5 or greater: From the USERS folder, open the SHARED AND TABLET folders. From the TABLET folder, drag the TABLET PREFERENCES to the trash. Log out, then log back in. When the tablet driver loads it will create a new preferences file with the factory default settings.

Macintosh OS 9: From the SYSTEM FOLDER open the PREFERENCES and TABLET folders. From the TABLET folder, drag the TABLET PREFERENCES file into the trash. Then restart your computer. When the tablet driver loads, it will create a new preferences file with the factory default settings.

The computer does not go to sleep.

When you are not using the pen or Cordless Mouse, remove them from the tablet surface or the tablet will continue to send data, keeping the computer awake.

When using the tablet the screen cursor is very erratic or jumps around.

On rare occasions the tablet may receive interfering radio frequencies from a computer monitor or nearby AM radio station. If you notice interference from a monitor, try moving the tablet at least 6 inches away from the monitor, or change the monitor refresh rate or monitor resolution.



WINDOWS-SPECIFIC PROBLEMS

Windows 98 or Me.

Your Graphire3 tools do not function inside a full screen DOS window.

You must use a traditional mouse when working in a full screen DOS window.

After pressing CTRL+ALT+DEL, the screen cursor cannot be controlled with your pen or Cordless Mouse.

When the CLOSE PROGRAM dialog box (Windows 98 or Me) is active, the tablet will not work. Use your mouse or keyboard to continue. When this dialog box is closed, you can again use your Graphire3 tool to control the screen cursor.

After changing right- and left-handed settings in the Mouse control panel, the Graphire3 pen tip no longer functions properly and the Graphire3 Cordless Mouse button functions are reversed.

This will reverse the right and left button settings on your Wacom tools. Restart Windows for your Wacom tool settings to be correctly recognized.

Windows XP. After installing the tablet on a system with multiple users, the tablet only works on the primary user desktop.

Reboot the system after installing the tablet on a system with multiple users.



Windows 98 or Me.

When working with multiple monitors, the screen cursor positioning is incorrect after moving into the unmapped area of the virtual desktop.

On a multiple monitor system, the tablet is mapped to the virtual desktop (a rectangular area covering all monitors). In the Pen Tablet control panel's PORTION OF SCREEN dialog box, the screen rectangle represents the entire virtual desktop.

If your video display areas do not form a rectangle because they are different sizes or they are not evenly aligned, the screen cursor positioning will be incorrect after moving into the unmapped area of the virtual desktop. To reestablish the correct screen cursor position, lift your Graphire3 tool out of tablet proximity and bring it back into proximity over an area of the tablet that is mapped to a display area.

MACINTOSH-SPECIFIC PROBLEMS

At startup, a dialog box appears telling you that either the driver failed to load or the tablet preferences have not yet been created.

The tablet was not detected at startup. Make sure the USB interface cable is securely connected and that the status LED on the tablet is orange. If your tablet is plugged into a USB hub, make sure the hub is connected and active.

Macintosh OS X, v10.1.5 or greater: From the GO menu, select APPLICATIONS and open the UTILITIES folder. Launch the APPLE SYSTEM PROFILER and select the DEVICES AND VOLUMES tab. A USB tablet should be displayed by the profiler. If a USB tablet was not found, check the USB tablet cable connection or try plugging the tablet into a different USB port.



TECHNICAL SUPPORT OPTIONS

If you have a problem with your Wacom tablet, first check the tablet installation guide to be sure the unit is installed correctly. Then review the [Troubleshooting](#) section within this manual; your problem may be described there and you can try the solution(s) offered.

If you cannot find the answer in this manual, you may find updated information about your problem in the Read Me file for your platform (located on the Wacom Tablet CD). You can also check the product FAQs (Frequently Asked Questions) on the Wacom web site for your region.

If you cannot solve the problem and you think your Wacom tablet is not working properly, contact the Wacom support staff for the area where your product was purchased. See the Wacom tablet Read Me file, located on the Wacom Tablet CD, for contact information. If you have a modem you can download the latest software drivers from the Wacom web site for your region. See [Obtaining Driver Downloads](#) for your region.

When you call, you should be at your computer with the following information available:

- This manual.
- Tablet serial and model number. (Look on the bottom of the tablet.)
- Driver version number. (See the Wacom Tablet CD or the Pen Tablet control panel.)
- The make and model of your computer, and operating system version number.
- A list of peripheral devices attached to your computer.
- The software application and version you were using when the problem occurred.
- The exact wording of any error message that appeared on your screen.
- What happened and what you were doing when the problem occurred.
- How you tried to solve the problem.



OBTAINING DRIVER DOWNLOADS

If you are having a compatibility conflict between Graphire3 and a new hardware or software product, it may be helpful to download a new Wacom tablet software driver (when available) from the Internet. Wacom periodically updates the software driver to maintain compatibility with new products.

USA, Canada, Central and South America

Worldwide Web:	http://www.wacom.com/productsupport	Software updates. (English)
Anonymous FTP Site:	ftp.wacom.com/pub/drivers	Software updates.

Europe, Middle East and Africa

Worldwide Web:	http://www.wacom-europe.com	Software updates.
Anonymous FTP Site:	ftp://ftp.wacom-europe.com/pub/	Software updates.

Japan

Worldwide Web:	http://tablet.wacom.co.jp	Software updates. (Japanese)
----------------	---	------------------------------

Asia Pacific (English)

Worldwide Web:	http://ap.wacom.co.jp	Software updates. (English)
----------------	---	-----------------------------



APPENDICES

This section contains information and tips on caring for your tablet and tools, a how-to on uninstalling the tablet software, your license and warranty, and more.

[CARING FOR YOUR TABLET AND TOOLS](#)

[UNINSTALLING THE SOFTWARE](#)

[PRODUCT SPECIFICATIONS](#)

[PRODUCT INFORMATION](#)

[ORDERING PARTS AND ACCESSORIES](#)

[RADIO AND TELEVISION INTERFERENCE](#)

[LICENSE AND WARRANTIES \(WORLDWIDE, EXCEPT
FOR EUROPE, AFRICA AND MIDDLE EAST\)](#)

[LICENSE AND WARRANTY \(EUROPE, AFRICA
AND MIDDLE EAST\)](#)

[CONTENTS](#)

[INDEX](#)



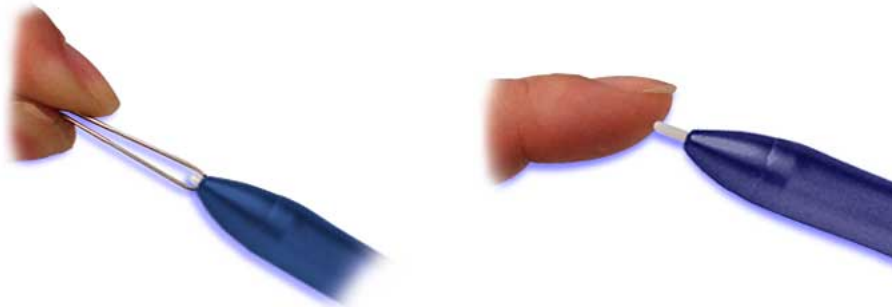
CARING FOR YOUR TABLET AND TOOLS

Keep your Graphire3 tools and tablet surface clean. Dust and dirt particles can stick to your tools and cause wear to the tablet surface. Regular cleaning with a soft, damp cloth will help prolong the life of your tablet surface and tools; you can also dampen the cloth using a very mild soap diluted with water. Do *not* use volatile liquids, such as paint thinner or benzene, as they may damage the plastic case.

Keep your tablet and tools in a clean, dry place and avoid extremes in temperature. Room temperature is best. Also, your Graphire3 tools and tablet are not made to come apart. Twisting the pen case can break the pen. Taking apart the product will void your warranty.

REPLACING THE PEN TIP

The pen tip (nib) will wear with normal use. When the nib gets too short or develops a flat point, you can replace it with another nib. Simply clasp the old nib with a tweezer, needle-nosed plier, or similar instrument and pull it straight out of the pen. Then slide the end of the new nib straight into the barrel of the pen – firmly push the nib until it stops.



Important: When the Graphire3 pen is not in use, place it in the pen storage compartment, the pen stand included with some product configurations or lay it flat on your desk. To maintain the sensitivity of your pen tip, do not store the pen in a container where it will rest on the tip.

To order replacement parts, see [Ordering Parts and Accessories](#).

UNINSTALLING THE SOFTWARE

Follow the appropriate procedure below to remove the Wacom tablet and tablet software from your system.

Windows XP: Click START. In the start menu, select CONTROL PANEL. Then select ADD OR REMOVE PROGRAMS. In the ADD OR REMOVE PROGRAMS window, choose PEN TABLET DRIVER and click on the CHANGE OR REMOVE PROGRAMS button. Follow the prompts to remove the tablet driver. When the tablet driver has been removed, unplug the tablet from your computer.

Windows 98, Me, or 2000:

1. Click the Windows START button. Then choose SETTINGS and CONTROL PANEL.
2. In the CONTROL PANEL window, double-click on the ADD/REMOVE PROGRAMS icon. In the dialog box that appears, choose the PEN TABLET option.
3. Click on the ADD/REMOVE... button and follow the prompts to remove the tablet driver. When the tablet driver has been removed, unplug the tablet from your computer.

Macintosh OS X, v10.1.5 or greater:

From the FINDER, choose APPLICATIONS from the GO menu and open the TABLET folder. Double-click on the REMOVE TABLET icon and select the REMOVE TABLET SOFTWARE button. After the removal is completed, click OK. Then unplug your tablet from the computer.

Macintosh OS 9:

1. Run the Wacom Tablet Installer (either from the Wacom Tablet CD or from your latest tablet driver download).
2. Select the INSTALL button and CONTINUE through the prompts until you reach the tablet driver installation dialog box. Then select the REMOVE button and follow the prompts.
3. Unplug the tablet from your computer.

Important: When you remove the Wacom tablet software from your system, any other Wacom tablet connected to your computer will no longer operate with full Wacom tablet functionality.



PRODUCT SPECIFICATIONS

GENERAL SPECIFICATIONS FOR ALL GRAPHIRE3 TABLETS

Coordinate resolution	80 lpmm (2032 lpi)
Accuracy (pen)	+/- 0.5 mm (0.02 in)
Reading height with pen	5 mm (0.20 in), average
Report rate	100 points per second
Communication interface	USB
Connector	USB A
Power requirements	DC 5V, 40 mA or less, from USB port
Operating temperature	5 to 40 degrees C (41 to 104 degrees F)
Storage temperature	-10 to +60 degrees C (14 to 140 degrees F)
Operating relative humidity	20% to 80% noncondensing
Storage relative humidity	20% to 90% noncondensing
Certifications and compliance	FCC Class B, CE, VCCI Class B, BSMI, C-Tick, Korean EMI

[GRAPHIRE3 4X5 / A6 TABLET \(MODEL CTE-430\)](#)

[GRAPHIRE3 6X8 / A5 TABLET \(MODEL CTE-630\)](#)

[GRAPHIRE3 PEN \(MODEL EP-130\)](#)

[GRAPHIRE3 CORDLESS MOUSE \(MODEL EC-130\)](#)

[GRAPHIRE3 INKING PEN \(MODEL EP-200, OPTIONAL\)](#)



GRAPHIRE3 4X5 / A6 TABLET (MODEL CTE-430)

Active area (W x D)	127.6 x 92.8 mm (5.02 x 3.65 in)
Physical size (W x D x H)	210 x 17.5 x 208 mm (8.27 x 0.69 x 8.20 in)
Cable length	1.5 m (4.95 ft)
Weight	0.5 kg (1.1 lb), approximately
Power consumption	0.2 watts, approximately

GRAPHIRE3 6X8 / A5 TABLET (MODEL CTE-630)

Active area (W x D)	208.8 x 150.8 mm (8.22 x 5.94 in)
Physical size (W x D x H)	275.5 x 18.1 x 256.8 mm (10.85 x 0.71 x 10.12 in)
Cable length	1.5 m (4.95 ft)
Weight	0.8 kg (1.8 lb), approximately
Power consumption	0.2 watts, approximately

GRAPHIRE3 PEN (MODEL EP-130)

Physical size (L x D)	145 x 12.5 mm (5.71 x 0.49 in)
Pressure levels	512 levels
Pen tip travel	0.1 mm (0.004 in) or less
Eraser tip travel	0.1 mm (0.004 in) or less
Weight	11 g (0.02 lb), approximately
Tip refill type	Polyacetal (Part No. PSI-A007)



GRAPHIRE3 CORDLESS MOUSE (MODEL EC-130)

Physical size (L x W x H)	115 x 60 x 38 mm (4.53 x 2.36 x 1.50 in), approximately
Weight	90 g (0.20 lb), approximately
Fingerwheel type	Continuous rotation, 24 notches per revolution

GRAPHIRE3 INKING PEN (MODEL EP-200, OPTIONAL)

Pen tip travel	0.1 mm (0.04 in) or less
Pressure levels	512 levels
Physical size (L x D)	151 x 12.5 mm (5.94 x 0.49 in)
Weight	12 g (0.42 oz), approximately
Tip refill types	Polyacetal (Part No. PSI-A011) Ink refill, black (Part No. PSI-A023)

Note: The Inking Pen will not fit into the pen storage compartment or pen stand.

PRODUCT INFORMATION

To learn more about which software applications currently support the pressure-sensitivity and eraser function of your Graphire3 tablet and pen, visit the Wacom web site for your region:

USA, Canada, Central and South America	http://www.wacom.com/productinfo
Europe, Middle East and Africa	http://www.wacom-europe.com/de (German) http://www.wacom-europe.com/fr (French) http://www.wacom-europe.com/uk (English)
Japan	http://tablet.wacom.co.jp
Asia Pacific (English)	http://www.wacom.com



ORDERING PARTS AND ACCESSORIES

To purchase parts and accessories, refer to the tablet Read Me file and see who to call for your region.

Description	Part Numbers
Photo Frame Cover (4x5 / A6)	PPL-A130
Photo Frame Cover (6x8 / A5)	PPL-A131
Replacement Tips for Pen (EP-130 models)	PSI-A007
Pen Stand	PST-A031
Pen Tether (optional)	FUZ-A089

You can also do the following:

To purchase parts and accessories in the USA or Canada, call 1-888-884-1870 (toll-free) or visit Wacom's web site at <http://www.wacom.com/wacomdirect/> (USA only).

To purchase parts and accessories in Europe, call +49 (0)180 500 03 75 or send an email to parts@wacom-europe.com. If you have an Internet connection, visit www.wacom-europe.com/solutionstore. You can also contact your local dealer, distributor, or Technical Support using the appropriate number for your region.

To purchase parts and accessories in other countries, please contact your local dealer or distributor.



RADIO AND TELEVISION INTERFERENCE

The equipment described in this manual generates, uses, and can radiate radio-frequency energy. If it is not installed and used properly—that is, in strict accordance with Wacom instructions—it may cause interference with radio and television reception.

FCC NOTICE

This equipment has been tested and found to comply with the limits for a Class B digital device, pursuant to Part 15 of FCC Rules. These limits are designed to provide reasonable protection against harmful interference in a residential installation.

This equipment generates, uses and can radiate radio frequency energy and, if not installed and used in accordance with the instructions, may cause harmful interference to radio communications. However, there is no guarantee that interference will not occur in a particular installation.

You can determine whether the tablet is causing interference by disconnecting it from your computer. If the interference stops, it was probably caused by the tablet.

If your tablet does cause interference to radio or television reception, you may be able to correct the interference by using one or more of the following measures:

- Rotate the television or radio antenna until the interference stops.
- Move the tablet farther away from the television or radio.
- Plug the tablet and computer into an outlet that is on a different circuit from the television or radio.

If necessary, consult your Wacom dealer or an experienced radio/television technician for help.

Changes or modifications to this product not authorized by Wacom could void the FCC Certification and negate your authority to operate the product.



CE DECLARATION

The Graphire® 3 digitizing tablet, models CTE-430 and CTE-630, have been tested and found to comply to the following harmonized European Norms:

- EN 55024 (electromagnetic immunity)
- EN 55022 Class B (electromagnetic emissions)

Based on the results of these tests, Wacom declares that the above mentioned devices conform to Article 10.1 of the European Council Directive 89/336/EEC, and their amendment Directive 93/68/EEC and indicates this conformity by the CE-sign on each device.

The device must be installed and operated always in strict accordance to the instructions given in this handbook. Any changes or modifications to this product that were not specifically authorized will invalidate this declaration.



LICENSE AND WARRANTIES

(WORLDWIDE, EXCEPT FOR EUROPE, AFRICA AND MIDDLE EAST)

Software License

This legal document is an agreement between you, the end-user, and Wacom Technology Corporation (Wacom).

1. Grant of License. The enclosed product includes computer programs embedded in firmware and accompanying diskette or CD-ROM (the "Software"). The Software is licensed, not sold, to you for use only with Wacom products upon the terms of this license, and Wacom reserves any rights not expressly granted to you. Wacom grants to you a non-exclusive right to use this copy of the Software in conjunction with a Wacom product at a single location.

2. Ownership of Software. Although you may own the product in which the Software is originally recorded, Wacom retains ownership of the Software itself. You acknowledge that the Software is Wacom's property, and contains valuable confidential, unpublished information developed or acquired by Wacom at great expense, including data processing algorithms, innovations and concepts. The Software is protected by copyright and other federal and state laws. You agree to use your reasonable best efforts to protect the Software from unauthorized reproduction, distribution, disclosure, use, or publication.

3. Copy Restrictions. Unauthorized copying of the Software is expressly forbidden.

4. Use Restrictions. You may not decompile, reverse assemble, disassemble or reverse engineer the Software.

5. Termination. This License is effective until terminated. This License will terminate automatically without notice from Wacom if you fail to comply with any provisions of the License.

6. Miscellaneous. This License is governed by the laws of the United States of America and the state of Washington except in Asia Pacific and by the laws of Japan for Asia Pacific.



Limited Warranty (Worldwide, Except Europe, Africa and Middle East)

WACOM warrants the product, except for the Software, to be free from defects in materials and workmanship under normal use and service as long as the product remains in possession of the original owner, for a period of one (1) year, from the date of original purchase, as evidenced by a copy of the receipt and a registration card that has been returned to WACOM within 30 days of purchase.

The Software is licensed "as is." WACOM makes no warranty with respect to its quality or performance. WACOM cannot guarantee you uninterrupted service or the correction of any errors.

Upon discovery of a defect in the product, except in the Software, within the Warranty Period, you should notify WACOM Technical Support via telephone, email, or fax to obtain an RMA (Return Merchandise Authorization) number and instructions for shipping the product to a service location designated by WACOM.

You should send the product, shipping charges prepaid, to the designated service location, accompanied by the return authorization number, your name, address and telephone number, proof of purchase date, and a description of the defect. WACOM will pay for return shipping by United Parcel Service or by an equivalent service as chosen by WACOM.

WACOM's sole obligation and entire liability under this warranty shall be, at WACOM's option, either the repair or replacement of the defective product or parts thereof of which WACOM is notified during the Warranty Period; provided, however, that you are responsible for (i) the cost of transportation of the product to the designated service location and (ii) any loss or damage to the product resulting from such transportation.

WACOM shall have no responsibility to repair or replace the product if the failure of the product has resulted from accident, abuse, misuse, negligence, or unauthorized modification or repair, or if it has been handled or stored other than in accordance with WACOM's storage instructions.

Any descriptions, drawings, specifications, samples, models, bulletins, or similar material, used in connection with the sale of the product, shall not be construed as an express warranty that the product will conform or comply with your requirements.



EXCEPT FOR THE LIMITED WARRANTY DESCRIBED ABOVE, THERE ARE NO OTHER WARRANTIES MADE BY WACOM ON THIS PRODUCT. NO ORAL OR WRITTEN INFORMATION OR ADVICE GIVEN BY WACOM, ITS DEALERS, DISTRIBUTORS, AGENTS, OR EMPLOYEES SHALL CREATE A WARRANTY OR IN ANY WAY INCREASE THE SCOPE OF THIS WARRANTY, AND YOU MAY NOT RELY ON ANY SUCH INFORMATION OR ADVICE. THIS WARRANTY GIVES YOU SPECIFIC LEGAL RIGHTS, WHICH VARY FROM STATE TO STATE.

WACOM LIMITS THE DURATION OF ANY LEGALLY IMPLIED WARRANTIES INCLUDING IMPLIED WARRANTIES OF MERCHANTABILITY OR FITNESS FOR A PARTICULAR PURPOSE, TO THE DURATION OF WACOM'S EXPRESS WARRANTY. SOME STATES DO NOT ALLOW LIMITATIONS ON HOW LONG AN IMPLIED WARRANTY LASTS. SO THE ABOVE LIMITATION MAY NOT APPLY TO YOU.

NEITHER WACOM NOR ANYONE ELSE WHO HAS BEEN INVOLVED IN THE CREATION, PRODUCTION, OR DELIVERY OF THIS PRODUCT SHALL BE LIABLE FOR ANY DIRECT, CONSEQUENTIAL, OR INCIDENTAL DAMAGES (INCLUDING DAMAGES FOR LOSS OF BUSINESS PROFITS, BUSINESS INTERRUPTION, LOSS OF BUSINESS INFORMATION AND THE LIKE) ARISING OUT OF THE USE OF OR INABILITY TO USE SUCH PRODUCT, EVEN IF WACOM HAS BEEN ADVISED OF THE POSSIBILITY OF SUCH DAMAGES.

BECAUSE SOME STATES DO NOT ALLOW THE EXCLUSION OR LIMITATION OF LIABILITY FOR CONSEQUENTIAL DAMAGES, THE ABOVE LIMITATION MAY NOT APPLY TO YOU.

In the event that any of the above limitations are held unenforceable, WACOM's liability for any damages to you or any party shall not exceed the purchase price you paid, regardless of the form of any claim.

This Limited Warranty is governed by the laws of the United States of America and the state of Washington.

This Limited Warranty is valid for and only applies to products purchased and used inside the United States (and its territories or possessions) and Canada.



Warranty on Sales Outside of U.S. and Canada (Except Europe, Africa and Middle East)

For products purchased or used outside of the United States and Canada, upon discovery of a defect in the product, except in the Software, within the Warranty Period you should notify your local dealer or distributor. In all other respects the terms of the warranty as set forth above apply to such sales.

Should you have any questions about this Agreement, or if you desire to contact WACOM for any reason, please contact in writing:

In North and South America contact:

Wacom Technology Corporation
1311 S.E. Cardinal Court
Vancouver, Washington 98683
U.S.A.

In Asia Pacific contact:

WACOM Co., Ltd.
2-510-1 Toyonodai
Otone-Machi, Kitasaitama-Gun
Saitama, 349-1148
Japan



LICENSE AND WARRANTY

(EUROPE, AFRICA AND MIDDLE EAST)

Software License Agreement

Important Notice to Customers

This product contains copyrighted computer programs (“software”) which are the inalienable intellectual property of WACOM Europe GmbH (“WACOM”). This software is both integrated within the product and also contained on the accompanying data carrier. The purchase of this product from your dealer does not include WACOM’s software and the associated rights of usage. WACOM grants you, the user, the right to use the software solely in accordance with the conditions of this software license agreement. By purchasing this product you agree to the terms of this license.

Entitlement to Use the Software

WACOM grants the customer a personal, non-exclusive license to use the software solely in combination with this product and for the proper operation of this product. This license may be transferred only in connection with this product.

The use of this software includes solely the permanent or temporary, complete or partial copying of the software by means of loading, displaying, executing, transmitting or saving for the purpose of executing the commands and data it contains or of observing, examining or testing the functions of the software.

The customer may not license, lease or loan the software to a third party, nor allow a third party to access the software in any other way. The customer may not without prior written authorization from WACOM copy, modify, transmit or edit the software, apart from the actions of copying necessary to create a backup copy and for the purposes outlined in section 2 above.

The customer may not decompile the software; if the software contains interfaces to software which is not supplied by WACOM, WACOM shall make the necessary information available to the customer upon request, provided that the customer can prove his/her entitlement to use the software and that he/she agrees to pay the copying and postage costs.



Limited Warranty

WACOM warrants to you as the original end-user that the product hardware is free from defects in materials and workmanship under normal use and service for a period of TWO (2) YEARS after the date of purchase, provided that they are unused at the time of such purchase. WACOM further warrants to you the accompanying diskettes against defects in materials and workmanship for a period of SIX (6) MONTHS after the date of purchase.

The Software is licensed and distributed "AS IS". WACOM makes no warranties, expressed or implied, with respect to its quality, performance, merchantability and fitness for a particular purpose (including related manuals and documentation). WACOM cannot guarantee you uninterrupted service or the correction of any errors.

Upon discovery of a defect in the product, except in the Software, within the applicable Warranty Period, you should return them in the original packaging to the place of your original purchase, together with your name, address, telephone number, a description of the problem and a copy of the original invoice. You are responsible for any loss or damage to the product resulting from such transportation. WACOM's sole obligation and entire liability under this warranty shall be, at WACOM's option, either the repair or the replacement of product or parts thereof that prove defective and that were returned within the applicable Warranty Period.

WACOM shall have no responsibility to repair or replace the product if (a), in the opinion of WACOM, the failure of the product has resulted from accident, abuse, misuse, negligence, misapplication, or unauthorized modification or repair, or (b) the product has been handled or stored other than in accordance with WACOM's storage instructions, or (c) the failure is due to normal wear and tear, or (d) you fail to fulfill your obligations as described above.

In case that any claim presented under warranty is found upon investigation to be either outside the duration or the scope of this warranty, or in case that the product is found to be not defective, then the cost of such investigation and repair shall be borne by you.

Any descriptions, drawings, specifications, samples, models, bulletins, or similar material, used in connection with the sale of the product, shall not be construed as an express warranty that the product will conform or comply with your requirements.



Should any provision of this agreement be declared invalid, that provision shall be treated as separate from the agreement, and the agreement shall remain in force without limitation in all other respects.

If this product is found to be defective, the purchaser may be entitled to institute legal proceedings against the seller on grounds of liability for deficiency. The statutory rights indicated with regard to the seller are not limited in any way by this warranty. Rather, this warranty affords the purchaser rights in addition to those indicated in the present text.

This limited warranty shall apply if the seller's corporate domicile is in the European Union or in Iceland, Norway, Jersey, Switzerland, Poland, Estonia, Latvia, Lithuania, Russia, the Ukraine, the Czech Republic, Slovakia, Hungary, Rumania, Bulgaria, Croatia, Slovenia, Serbia, Malta, Tunisia, Cyprus, Turkey, Syria, the Lebanon, Jordan, Israel, Egypt, the United Arab Emirates, Iran or South Africa.

This Limited Warranty and Liability is governed by the laws of the Federal Republic of Germany.

Should you have any questions about this Agreement, or if you desire to contact WACOM for any reason, please contact in writing:

WACOM Europe GmbH
Europark Fichtenhain A9
47807 Krefeld
GERMANY



GLOSSARY

Active Area. The drawing area of the tablet where your Graphire3 tools are detected.

Aspect. The ratio between the vertical and horizontal dimension of the tablet or display. The aspect setting (MAINTAIN PROPORTIONS checkbox) is located in the PEN MODE DETAILS dialog box, and defines how the tablet area is mapped to the display area.

Click Force. The amount of force you must apply to your pen tip for a click to occur.

DOS Shell. A DOS session that is running under the Windows operating system.

Double-Click Distance. The maximum distance (in screen pixels) that the cursor can move between clicks and still be accepted as a double-click. Increasing the double-click distance makes double-clicking easier, but may cause a delay in brush strokes in some graphics applications.

Eraser-Aware Application. A software application that has built-in support for the Graphire3 eraser. These applications take advantage of the eraser in different ways, depending on what makes sense for the application.

Fingerwheel. The control wheel on the Graphire3 Cordless Mouse.

Mapping. The relationship between your Graphire3 tool position on the tablet and the cursor position on the monitor screen.

Modifier. Modifier keys include SHIFT, ALT, and CTRL for Windows, or SHIFT, CTRL, COMMAND, and OPTION for Macintosh. You can customize your Graphire3 tool to simulate a modifier key.

Mouse Mode. A method for positioning the screen cursor. When you place a Graphire3 tool on the tablet, you can move the screen cursor with a “pick up and slide” motion similar to using a traditional mouse. This is known as relative positioning, and is the default setting for the Graphire3 Cordless Mouse. See also [Pen Mode](#).



Nib. The replaceable tip of the Graphire3 pen.

Pen Mode. A method of positioning the screen cursor. Wherever you place your Graphire3 tool on the tablet, the screen cursor will jump to the same corresponding point on the screen. This is known as absolute positioning, and is the default setting for the pen. Absolute positioning (Pen Mode) allows you to quickly position the screen cursor without having to first find it and then slide it across the desktop. See also [Mouse Mode](#).

Pixel. The smallest unit of measure on your monitor screen.

Pop-up Menu. A window that displays a list of keystroke functions and other actions you can perform. You can customize the tool buttons of your Graphire3 pen and Cordless Mouse to display this menu.

Pressure Sensitive. A quality of the Graphire3 pen tip and eraser that senses the amount of pressure being applied. This is used to create natural-looking pen and brush strokes in applications that are pressure-sensitive.

Pressure-Sensitive Application. Any application that supports pressure-sensitive input.

Proximity. The height above the tablet's [active area](#) where the Graphire3 tools are detected. Refer also to the [Proximity](#) section.

Screen Cursor. The pointer on the display screen. Screen cursors come in different shapes (such as an I-beam, arrow, or box), depending on which application you are running.

USB. Universal Serial Bus. A hardware interface standard for connecting computer peripheral devices. USB ports support hot-plugging, which allows you to connect or disconnect a USB device without turning off your computer.

Wintab. An interface standard used by Windows applications for receiving tablet information. Graphire3 supports all Wintab-compatible applications under Windows.



INDEX

About the manual	5	Dragging, with pen	17
Accessories and parts, ordering	63	Drawing with pressure	19
Basics, control panel	28	Driver downloads, obtaining	56
Button functions	36	Environmental conditions	58
Care, for tablet and tools	58	Eraser feel, adjusting	33
CE declaration	65	Erasing, with pen	20
Click Sound	15	Eye-hand coordination exercise	21
Clicking, with pen	15	FCC notice	64
Control panel		Features	
basics	28	input tools	10
details	32	tablet	9
opening	27	Fingerwheel, using	23
Cordless Mouse		Functions, button	36
buttons, customizing	30	General problems, troubleshooting	49
using	22	Graphire3, working with	8
fingerwheel	23	Holding the pen	13
Customizing		Interference, radio and television	64
Cordless Mouse buttons	30	Keystrokes, adding to Pop-up Menu	31
double-click	34	Macintosh-specific problems, troubleshooting	54
mouse acceleration	45	Maintain Proportions	41
mouse speed	45	Manual, about	5
Pen	29	Mapping, to multiple monitors	42
side switch	35	Mouse Speed, setting	45
tip feel	33	Nib, replacing	58
Double-click, customizing	34	Ordering parts and accessories	63
Double-clicking, how to	15		



Parts and accessories, ordering	63	Specifications	
Pen		4x5 / A6 tablet	61
adjusting eraser feel	33	6x8 / A5 tablet	61
clicking with	15	Cordless Mouse	62
customizing	29	general	60
double-clicking with	15	Inking Pen	62
dragging with pen	17	Pen	61
drawing with pressure	19	product	60
erasing with	20	Tablet	
holding	13	changing the underlay	25
pointing	14	creating a new underlay	26
replacing the tip	58	features	9
using	12	Maintain Proportions option	41
using side switch	16	mapping to multiple monitors	42
Pointing, with pen	14	screen area	43
Pop-up Menu, adding keystrokes	31	storing	58
Pressure, drawing with	19	tablet area	44
Proximity	18	testing	47
Radio and television interference	64	tracking	40
Screen area, mapping	43	working with	24
Side switch		Tablet area, mapping	42 , 44
customizing	35	Technical Support options	55
using	16	Testing, tablet	47
Software		Tip feel, customizing	33
driver downloads	56	Tip, replacing	58
uninstalling	59		



Tracking, tablet	40
Troubleshooting	46
general problems	49
Macintosh-specific problems	54
tables	49
Windows-specific problems	53
Underlay	
changing	25
creating new	26
Uninstalling software	59
Windows-specific problems, troubleshooting	53
Work area, setting up	11
Working with Graphire3	8



WACOM INTERNATIONAL OFFICES

WACOM Technology Corporation

1311 S.E. Cardinal Court

Vancouver, WA 98683

U.S.A.

Telephone

General: +1-360-896-9833

Fax: +1-360-896-9724

WACOM Co., Ltd.

2-510-1 Toyonodai

Otone-Machi, Kitasaitama-Gun

Saitama, 349-1148

Japan

Telephone

General: +81-(0)480-78-1213

Fax: +81-(0)480-78-1217

WACOM Europe GmbH

Europark Fichtenhain A9

47807 Krefeld

Germany

Telephone

General: +49-(0)2151-3614-0

Fax: +49-(0)2151-3614-111