

USING[PEN](#)[CORDLESS MOUSE](#)[TABLET](#)**CUSTOMIZING**[PEN](#)[CORDLESS MOUSE](#)[TABLET](#)[POP-UP MENU](#)**TROUBLESHOOTING**

graphire®

Bluetooth®

WIRELESS TECHNOLOGY



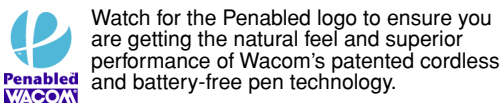
User's Manual for Windows® & Macintosh®

Wacom Graphire® Bluetooth® User's Manual for Windows® & Macintosh®

English version 1.0, February 11, 2005

Copyright © WACOM Company, Limited, 2005

All rights reserved. No part of this manual may be reproduced except for your express personal use. Wacom reserves the right to revise this publication without obligation to provide notification of such changes. Wacom does its best to provide current and accurate information in this manual. However, Wacom reserves the right to change any specifications and product configurations at its discretion, without prior notice and without obligation to include such changes in this manual.



DuoSwitch is a trademark, and Graphire, Penabled, and Wacom are registered trademarks of WACOM Company, Limited.

The Bluetooth® word mark and logos are owned by the Bluetooth SIG, Inc. and any use of such marks by WACOM Company, Limited is under license. Other trademarks and trade names are those of their respective owners.

Adobe, Reader, and Photoshop are either registered trademarks or trademarks of Adobe Systems Incorporated in the United States and/or other countries. Microsoft and Windows are either registered trademarks or trademarks of Microsoft Corporation in the United States and/or other countries. Apple, the Apple logo, and Macintosh are registered trademarks of Apple Computer, Inc., registered in the U.S. and other countries. Any additional company and product names mentioned in this documentation may be trademarked and/or registered as trademarks. Mention of third-party products is for information purposes only and constitutes neither an endorsement nor a recommendation. Wacom assumes no responsibility with regard to the performance or use of these products.

ExpressKey is a registered trademark of Ginsan Industries, Inc., and is used with permission.

CONTENTS

About the manual	4	TROUBLESHOOTING	43
Navigating the manual	5	Testing your tablet	44
WORKING WITH GRAPHIRE	6	Testing your tools	45
Tablet features	7	Troubleshooting tables	46
Input tools	8	Connection problems	46
Battery and power management	9	General problems	48
Installing the battery	9	Windows-specific problems	51
Charging the battery	10	Macintosh-specific problems	51
Power saving features	12	Technical support options	52
Power indicator light	12	Obtaining driver downloads	53
Establishing a Bluetooth connection	13	APPENDIX	54
Optimizing the Bluetooth connection	16	Tablet installation	54
Setting up your work area	17	Caring for your tablet and tools	55
Using the cordless pen	18	Replacing the pen tip	55
Holding the pen	18	Battery life information	55
Pointing	19	Replacing the tablet battery	56
Clicking	20	Uninstalling the tablet software	57
Dragging	20	Product specifications	58
Using the side switch	21	Graphire Bluetooth pen tablet	
Drawing with pressure-sensitivity	21	(model CTE-630BT)	58
Erasing	22	Graphire pen (model EP-130E)	59
Eye-hand coordination exercise	22	Graphire cordless mouse (model EC-130)	59
Using the cordless mouse	23	Graphire Inking Pen (model EP-200, optional)	59
Working with the tablet	24	Product information	60
Using the ExpressKeys	25	Ordering parts and accessories	60
Changing the tablet underlay	26	Radio and television interference	61
Creating a new tablet underlay	26	FCC notice	61
CUSTOMIZING	27	CE declaration	61
Opening the control panel	27	License and Warranties	
Control panel overview	28	(Worldwide, Except for Europe,	
Control panel settings	28	Africa and Middle East)	62
Customizing the pen	29	Software License	62
Adjusting tip feel, eraser feel,		Limited Warranty (U.S.A. and Canada)	62
and double-click		Warranty Service in the U.S.A. and Canada	63
Customizing the side switch	30	Warranty on Sales Outside of the U.S.A.	
Button functions	31	and Canada	64
Customizing the cordless mouse	32	License and Warranty	
Customizing mouse buttons	34	(Europe, Africa and Middle East)	65
Tablet tracking	35	Software License Agreement	65
Portion of screen area	36	Entitlement to Use the Software	65
Portion of tablet area	39	Limited Warranty	65
Setting mouse speed	40	GLOSSARY	67
Working with tablet properties	41	INDEX	69
Customizing the Pop-up Menu	42		

About the manual

This interactive user's manual provides quick access to information about Graphire. Just click on a navigation button or highlighted word to move through the document. The information is common to Windows and Macintosh computers, and Windows screen captures are shown unless otherwise noted.

- In the [contents](#) you can go directly to a topic by clicking on it.
- [Working with Graphire](#) is the learning chapter, and introduces you to the many capabilities of your Graphire pen tablet. It describes the wireless pen tablet, the features and function of each Graphire tool, and includes exercises for new users. If you are not familiar with a pen tablet, this chapter gives you the basics.
- [Customizing](#) describes how you can change the control panel settings to optimize your Graphire pen, mouse, and tablet for the way you like to work.
- Want to test your tablet and tools? Need troubleshooting guidelines? [Troubleshooting](#) is where you will find the answers to most common questions.
- The [appendix](#) include a variety of information: tips on tablet installation, caring for your tablet and tools, a how-to on uninstalling the software, your license and warranty, and more.

Note: This manual does not contain complete information on installing your tablet. Please refer to your product Quick Start Guide and to the automated software installer (located on the Wacom Pen Tablet Driver CD) for complete details on installing your Wacom tablet.

If you are new to electronic documentation, be sure to read [navigating the manual](#).

Here are some other points to keep in mind:

- SMALL CAPITAL LETTERS are used to identify the names of keyboard keys, dialog boxes, and control panel options.
- Remember that you can always use the Adobe Reader zoom-in tool to increase the size of the manual on your display screen.
- The following kinds of information are not included with this product: information about your specific computer hardware or operating system, information about another manufacturer's Bluetooth hardware or software, or information about your application software. Your best source for this information is the set of manuals and disks that came with your hardware, operating system, or application.
- Many graphics applications have built-in support for Graphire features (such as pressure-sensitivity and eraser support). You can find a listing of applications that support these features at Wacom's web site (see [product information](#)). For information on how best to use Graphire features within a specific application, refer to the instructions in that application's manuals.

Navigating the manual

Use the navigation controls to move through the manual:



Go to front page.

[CONTENTS](#)

Go to table of contents.

[INDEX](#)

Go to index.



Go back to previous view.



Page back, or page forward.

[HEADING TEXT](#)

Go to beginning of section.

[topic](#)

Go to topic.



Topic continued.

Adobe Reader provides you with additional tools for using and printing the manual. Refer to the Adobe Reader help for more information.

WORKING WITH GRAPHIRE

This section introduces you to the Graphire Bluetooth pen tablet, which consists of two basic elements: a wireless tablet that serves as your work area, and the [input tools](#) you use on the tablet.

The quickest way to learn about your Graphire pen tablet is to become familiar with its appearance and features. If you are new to using a pen tablet and tablet input tools, read the following sections to learn about your Graphire tools and how to use them with the tablet.

[Tablet features](#)

[Input tools](#)

[Battery and power management](#)

[Establishing a Bluetooth connection](#)

[Optimizing the Bluetooth connection](#)

[Setting up your work area](#)

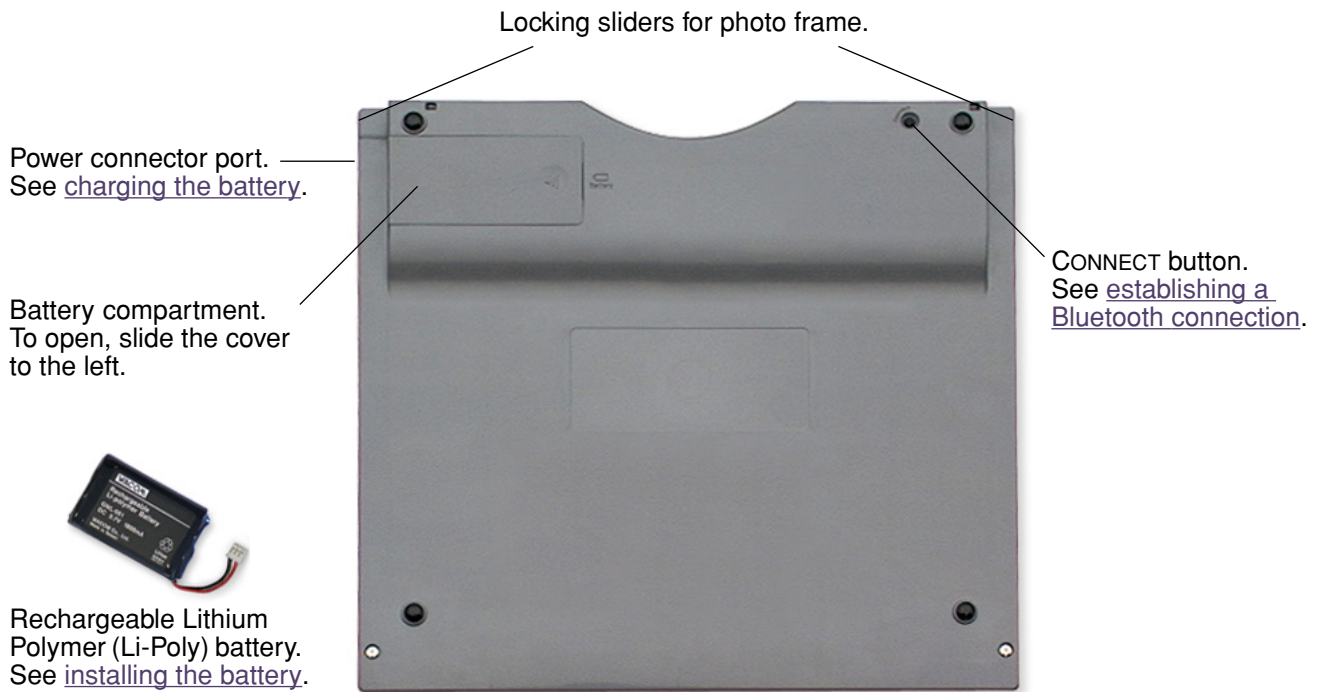
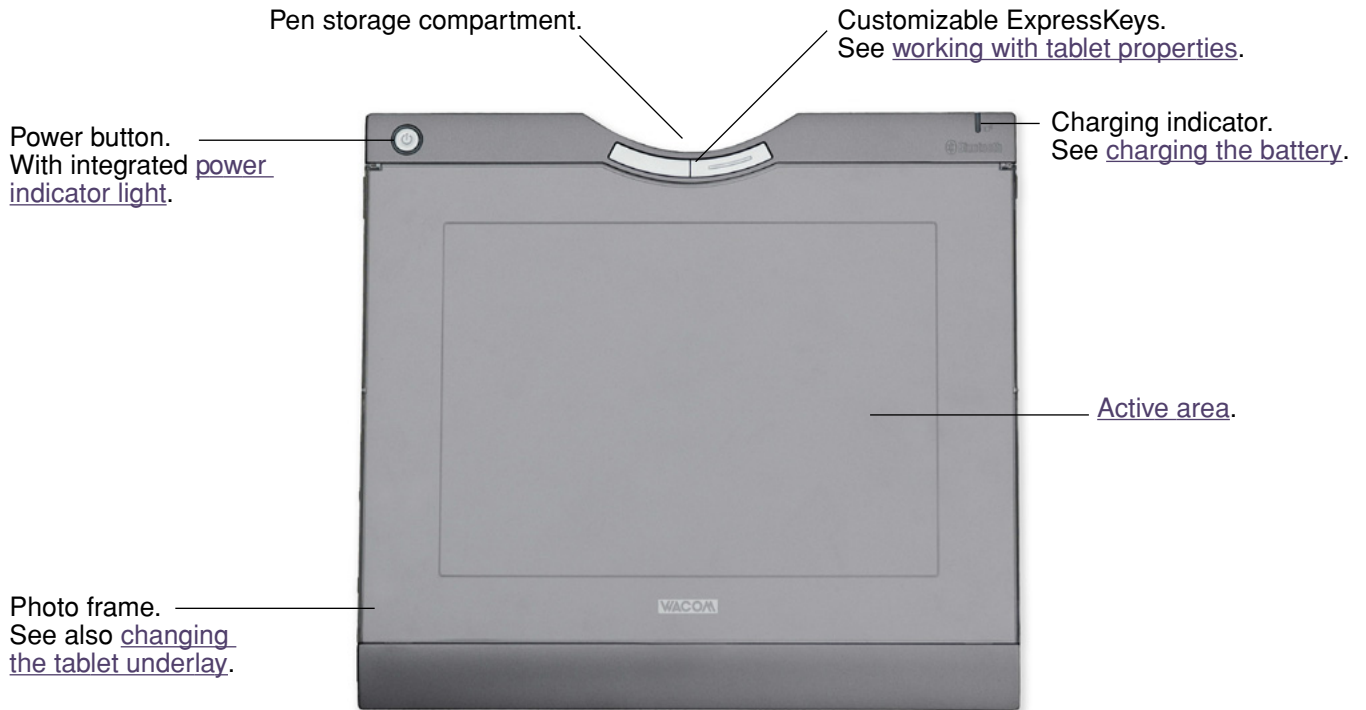
[Using the cordless pen](#)

[Using the cordless mouse](#)

[Working with the tablet](#)

Tablet features

The Graphire Bluetooth pen tablet provides you with enhanced workspace flexibility and more creative freedom in the way you interact with the tablet and input tools.





Power adapter and cable. See [charging the battery](#).

Plug varies by region.



Pen stand.

Input tools

Your Graphire input tools are cordless, battery-free, and ergonomically designed.



Eraser.

DuoSwitch (rocker style).

Replaceable nib (pen tip).

[Graphire pen](#). The pen is a pressure-sensitive freehand tool for image editing and creating natural-looking pen and brush strokes.

[Programmable buttons](#) can be customized for the way you like to work.

[Fingerwheel](#). An integrated middle button and rolling wheel that can be used for up and down scrolling in the active window. It can also be customized to perform a variety of button functions.



[Graphire cordless mouse](#). The cordless mouse is an ideal tool for navigation or performing any other task you may have done previously with a standard mouse.

Battery and power management

This section contains important information about the battery and power management features of the Graphire Bluetooth pen tablet. Be sure to review the following items:

- [Installing the battery](#)
- [Charging the battery](#)
- [Power saving features](#)
- [Power indicator light](#)

See also [working with the tablet](#) for more information about tablet features.

Installing the battery

Your wireless pen tablet uses a rechargeable Lithium Polymer (Li-Poly) battery as the power source for mobile operation, and a power adapter for charging the battery and to operate the tablet using outlet power.

Before installing or working with Graphire Bluetooth, you must first install the rechargeable battery that came with your tablet.

To install the tablet battery:

1. Turn the wireless tablet upside down and slide open the battery compartment door (see picture below).
2. Align the notch on the battery cable plug with the cutout in the tablet connector, then press the plug into the connector as shown.



Important: Use only the correct battery provided by Wacom and be careful not to drop it on hard surfaces. The battery can be damaged internally when dropped, and should be replaced even if there is no obvious damage. This will help prevent any future damage that could occur to the tablet if the battery has been dropped, is installed in the tablet, and then later develops a short or leak while in the tablet.

Warnings:

Do not attempt to install the battery backwards or reverse the polarity. If you do so, you may damage the tablet, cause a fire, or personal injury may result.

NEVER attempt to use other battery types in your tablet. Doing so may damage the tablet, cause a fire, or personal injury may result.

See [replacing the tablet battery](#) for additional battery cautions and warnings.

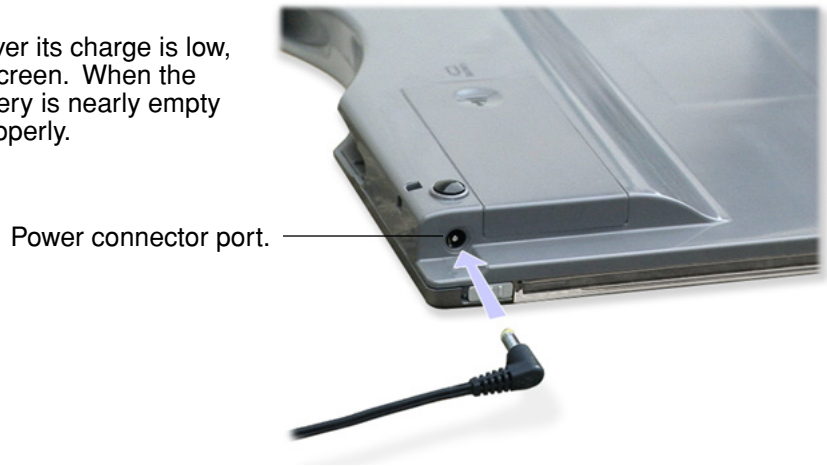
3. Insert the battery into the battery compartment and close the compartment door. Move on to [charging the battery](#).

Charging the battery

Before using the tablet battery for the first time, Wacom recommends that you plug in the power adapter and allow the battery to charge. You can continue with the installation process and you can work with the tablet while the battery is being charged. The battery will take approximately five to six (5 to 6) hours to fully charge. Note that fully charging or discharging the battery does not extend the battery life as Li-Poly batteries do not have a memory.

To charge the battery: Plug the round end of the power adapter into the tablet power connector port. Then connect one end of the adapter's power cable to the power adapter, and the other end to an active power outlet.

Note: You should charge the battery whenever its charge is low, as indicated by a low battery alert on your screen. When the power indicator light starts flashing, the battery is nearly empty and the tablet will soon cease to function properly.



The charging indicator glows orange when charging, and green when fully charged.



Note: To check the current battery charge status, open the Pen Tablet control panel and go to the TABLET tab. See [working with tablet properties](#).

Tip: Plug in the power adapter and recharge the battery before it gets too low. This will ensure the tablet battery is always ready for mobile operation.



The battery immediately begins to charge whenever the power adapter is connected and the battery is not fully charged. The battery will charge whether the tablet is switched on or off. The charge time will vary depending upon the battery level and various factors such as the ambient temperature and whether the tablet is in use while charging. If the battery level is low, the battery will take approximately five to six hours to fully charge.

The charging indicator lights as follows:

Charging indicator	Battery charging status
LED glows orange.	Power adapter is connected and battery is charging.
LED glows green.	Power adapter is connected and battery is fully charged.
LED off.	The battery is not charging. Check that the power adapter is properly plugged into the tablet and connected to an active power outlet. If the LED still does not light, the battery should be replaced. See replacing the tablet battery .

 **Warnings:**

Do **not** attempt to charge the tablet battery with any power adapter other than the one supplied with your Graphire Bluetooth pen tablet. Doing so may damage the tablet, cause a fire, or personal injury may result.

If the tablet becomes excessively warm or emits an unusual smell while the battery is charging, immediately disconnect the power adapter from the power outlet and shut down the tablet. Contact Wacom Technical Support for assistance (see [technical support options](#)).

For additional battery precautions, see [replacing the tablet battery](#).

A new, fully charged battery should provide approximately 25 hours of constant use.

- When the battery charge falls below 20%, an alert message will appear on your computer display screen to remind you the battery needs recharging.
- When the battery is nearly empty, the power indicator light will start flashing – the tablet may stop operating properly and will soon switch itself off. You should immediately connect the power adapter; this will allow you to continue working while the battery is charging.

Notes:

- When you are done working, remember to turn off the tablet in order to conserve battery power.
- Even when the tablet is off, it still draws a small amount of current from the battery. It is a good idea to charge the battery before leaving the tablet unused for a number of days.
- If you will not be using your tablet for an extended period of time (a month or longer), Wacom suggests unplugging the battery from the tablet connector in order to conserve the charge and battery life.
- If your battery can no longer hold a charge, the battery should be replaced. See [replacing the tablet battery](#).

Power saving features

To conserve battery power when the tablet is not in use, the tablet will turn itself off after 30 minutes without user input. To resume operations, press the power button.

Note: Graphire Bluetooth will not switch off automatically when the power adapter is connected and supplying power to the tablet.

When there is no wireless connection for more than two (2) seconds, such as when the computer is switched off or the tablet is moved out of range, Graphire Bluetooth switches itself off. To resume operations, make sure that your computer's Bluetooth support is working and that your tablet is within range. Then press the power button.

Important: When the Graphire pen is not in use, place it in the pen storage compartment, the pen stand, or lay it flat on your desk. Leaving the pen on the tablet when not in use can prevent the tablet from switching off and cause the battery to drain down.

Power indicator light

Check the power indicator light to understand the operational status of the tablet:

Power indicator light	Tablet status
Steady blue.	Normal operation, no user input.
Green.	Pen tip, tool buttons, or tablet ExpressKeys in use.
Slowly flashing blue (200 ms on, 800 ms off).	Battery empty. Recharge immediately.
Quickly flashing blue (100 ms on, 300 ms off).	Discoverable mode (after pressing the CONNECT button). See establishing a Bluetooth connection .
Off.	<p>Off. Any of the following conditions can prompt the tablet to power off.</p> <ul style="list-style-type: none"> You press and release the power button. After you press the CONNECT button, the tablet does not pair with a computer within three (3) minutes. No user input for more than 30 minutes. No wireless connection for more than two (2) seconds. Battery charge drops below operational level and no external power supply is connected to tablet. <p>Once the tablet has turned itself off and there is adequate battery or external power available, you must press the power button to turn the tablet back on.</p>

Establishing a Bluetooth connection

The Graphire Bluetooth pen tablet connects to your computer via a wireless Bluetooth connection. Bluetooth is a radio-frequency technology, so it is not necessary for Graphire Bluetooth to be “in sight” of the Bluetooth antenna on your computer. The radio frequency can pass through non-metallic objects like walls, bookshelves, etc.

Important:

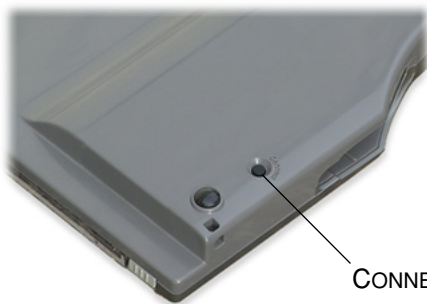
- Graphire Bluetooth is a Class 2 Bluetooth device, and can operate for up to 10 meters (33 feet) from the Bluetooth antenna of your computer.
- Interference from other networks operating in the 2.4 GHz band, other Bluetooth devices connected to your computer (especially audio devices), or metallic objects located in or along the line of sight can negatively impact the tablet performance and operating distance.
- If you experience connection problems, see [optimizing the Bluetooth connection](#) for related tips and suggestions.

Before connecting the tablet, make sure that your computer has a working Bluetooth configuration that meets Bluetooth Specification v1.1 or higher with Human Interface Device (HID) profile. If your computer does not have built-in Bluetooth support, you need to obtain and install a commercially available USB-to-Bluetooth adapter.

The process of connecting Graphire Bluetooth to your computer is called “[pairing](#)”. Please read the instructions that came with your Bluetooth hardware and software for details on how to pair a device to your specific Bluetooth configuration. The following is an overview of the typical steps involved in the process.

To establish a link between your wireless tablet and computer:

1. Turn on your computer and wait until the system has fully loaded. Make sure that your computer’s Bluetooth wireless connection is working. You can test this using a Bluetooth mouse or keyboard.
2. Press the CONNECT button located on the bottom of the tablet to place the tablet in [discoverable](#) mode. The tablet power indicator light will blink rapidly when the tablet is in discoverable mode.



CONNECT button.

- The tablet will remain in discoverable mode for three (3) minutes or until a pairing with your computer has been established. If pairing is not established within three (3) minutes, the tablet will turn itself off.
- The tablet can only be paired (linked) to your computer while the tablet is in discoverable mode.



3. While the tablet is in discoverable mode, pair it to your computer. The following points provide a general overview of the pairing process. For detailed instructions on pairing a Bluetooth device to your computer, refer to the documentation that came with your operating system or Bluetooth support.
 - Open the Bluetooth devices control panel. Some common access points to this control panel include: the task bar, menu bar, control panel, or system preferences pane of your computer's operating system.
 - From the Bluetooth devices control panel, start the process of adding a device. Common options to do so are ADD A BLUETOOTH DEVICE, BLUETOOTH SETUP, or SET UP NEW DEVICES.
 - In the setup assistant that appears, carefully follow all directions to continue.
 - If prompted for the device type to set up, choose "mouse".
 - When the tablet is discovered it will show up as WACOM PEN TABLET. Select it and continue to follow the prompts. If the tablet does not appear, you will need to refresh the assistant and again press the tablet CONNECT button.
 - If prompted for an authentication code or passkey, select the "don't use" or "no" option. The Graphire Bluetooth pen tablet does not require passkey authentication.
 - If prompted for the device type services to add, choose the option for "tablet". Otherwise choose "mouse".
 - After the wireless tablet has been successfully paired to your computer it will appear as a connected device in the Bluetooth devices control panel.
4. Close the Bluetooth devices control panel and check the connection. Place the pen on the tablet – you should be able to move the screen cursor with the pen.

Once you have established a connection between your wireless tablet and the computer, they will remember the connection – just as if you had connected a virtual cable between them. The tablet will remember which computer it is connected to, and will reject all attempts by other computers to connect to it.

- If the link is broken for more than two seconds (e.g., you shut down your computer, unplug your USB-to-Bluetooth adapter or otherwise switch off your Bluetooth support, or move the tablet too far away from the computer), the tablet will switch itself off.
- When starting up your computer, wait until your operating system has completely loaded and then push the tablet power button. The Bluetooth connection will automatically be reestablished.
- If you again press the CONNECT button, the virtual cable link will be broken and the tablet will once again become discoverable by any Bluetooth enabled computer.

Important: Remember that the Graphire Bluetooth pen tablet driver software must be installed before you will be able to work with full tablet functionality and features such as pressure-sensitivity with the pen.

5. If you have not already done so, install the pen tablet driver software. Insert the Wacom Pen Tablet Driver CD into your computer's CD-ROM drive, click on the INSTALL TABLET link, and follow the prompts to install the driver software.





To disconnect the wireless tablet from a computer:

You can break the connection between tablet and computer from either the tablet or from the computer to which it is linked:

- **From the tablet**, while the tablet and computer are linked, simply press the CONNECT button on the back of the tablet. A disconnect message will be sent to the computer.
- **From the computer that the tablet is paired with**, open the Bluetooth devices control panel and delete the pairing for the tablet.

Notes:

- You can link up to seven Bluetooth devices, including multiple Graphire Bluetooth pen tablets, to a computer.
- The use of wireless devices is regulated in most countries. If you will be traveling with your wireless tablet, be sure to check with the appropriate regulatory authority for any restrictions that may apply to your product in the country of your destination.
-  Products using wireless signals can interfere with the equipment on commercial aircraft, and regulations require that all wireless devices be turned off when traveling in an airplane. You can ensure the Graphire tablet wireless signal has been turned off by checking the power button (the power indicator light will be off) and ensuring that you do not press the power button during takeoff, transit, or landing.
-  Do not use the Graphire Bluetooth pen tablet in a facility control system or any other environment that requires extremely high reliability, or where the use of a wireless device may cause interference; the wireless tablet may interfere with or cause other electronic devices to malfunction, or other wireless devices may interfere with or cause the tablet to malfunction. Where use is prohibited, power off the tablet (ensuring the wireless signal has been turned off) to prevent the possibility of it interfering with or causing other electronic devices to malfunction. Wacom does not accept any liability for direct or consequential damages. For details, please refer to your Warranty, located at the end of this manual.

Optimizing the Bluetooth connection

If your screen cursor lags behind the pen movement on the tablet or frequently jumps about, or if you see excessive straight line segments when drawing in graphics applications, then your Bluetooth connection may not be able to transmit all of the data from the tablet with the necessary speed. This may be caused by interference from other radio sources, obstructions in the radio wave path, excessive distance from the computer, or a combination of the above.

Try the following actions to improve your Bluetooth connection and optimize tablet performance:

- Remove any metallic objects from the line of sight between Graphire Bluetooth and your Bluetooth antenna or adapter.
- If you are using a USB-to-Bluetooth adapter, use a USB extension cable and place the Bluetooth adapter onto your desktop or somewhere in sight of Graphire Bluetooth.
- Use Bluetooth support that complies with Bluetooth Specification v1.2. Some Bluetooth devices can be upgraded to comply with newer specifications. Contact the manufacturer of your Bluetooth support for details.
- Uncheck the [MAXIMUM DATA RATE](#) checkbox in the Pen Tablet control panel.
- Use a Class 1 Bluetooth adapter on your computer.
- If you are using a computer with a built-in Bluetooth antenna, try reorienting the computer until you get a better data rate.
- Move the tablet closer to your computer's Bluetooth antenna.
- Disconnect any Bluetooth audio devices, such as headsets, that may be connected to your computer.
- Switch off any other devices operating in the 2.4 GHz radio spectrum, such as WiFi networks, mobile telephones, etc., or move their antennas further away from your computer.

Setting up your work area

To minimize fatigue, organize your work area so you can work comfortably. Position your tablet, input tools, and keyboard so they are easily accessible without unnecessary reaching. Your monitor should be positioned so you can view it comfortably with a minimum of eyestrain. For best results, orient the tablet so the screen cursor follows the same direction as your hand movements on the tablet.



Here are some other points to keep in mind:

- Take short breaks between tasks to stretch and relax your muscles.
- Use a gentle grip when working with your tools.
- Alternate tasks and tools throughout the day.
- Maintain a good posture at all times. Minimize awkward postures and repetitive movements that cause discomfort.
- Change your position if you feel any discomfort due to your work position.

Note: Wacom makes no representation, promise or guarantee that Wacom products will cure or prevent, in whole or in part, mouse-induced repetitive stress symptoms, injuries or conditions. Individual results may vary. Always obtain competent medical advice to determine the most appropriate treatment for your specific situation.

See [working with the tablet](#) for more information.

Using the cordless pen

Your Graphire pen is cordless, battery-free, and pressure sensitive. There are four basic techniques for using the pen: pointing, clicking, double-clicking, and dragging. With a bit of practice, using the pen will become second nature to you. If you are unfamiliar with using the pen, try the exercises on the following pages.

- [Holding the pen](#)
- [Pointing](#)
- [Clicking](#)
- [Dragging](#)
- [Using the side switch](#)
- [Drawing with pressure-sensitivity](#)
- [Erasing](#)
- [Eye-hand coordination exercise](#)

Holding the pen

Hold the Graphire pen like you would a normal pen or pencil. Make sure the DuoSwitch is in a convenient location where you can toggle it with your thumb or forefinger, but not accidentally press the switch while drawing. You can tilt the pen in any way that feels most comfortable for drawing.



Position for drawing.



Position for erasing.



Your tablet also comes with an integrated pen storage compartment. When you are not using the pen, you can reach behind the tablet and press the pen into the storage compartment or lay it flat on your desk.



Use the pen stand to store the pen between tasks. This also makes the pen available for quick, easy access when you are working.

Important: When the pen is not in use, place it in the pen storage compartment, the pen stand, or lay it flat on your desk. To maintain the sensitivity of your pen tip, do not store the pen in a container where it will rest on its tip. Leaving a Graphire tool on the tablet may interfere with screen cursor positioning when using other pointing devices. Also, leaving the pen on the tablet when not in use can prevent the tablet from switching off and cause the battery to drain down.

Pointing

The Graphire pen positions the pointer (or cursor) on your screen. You can position the screen cursor two different ways, like a pen ([PEN MODE](#)) or like a mouse ([MOUSE MODE](#)).

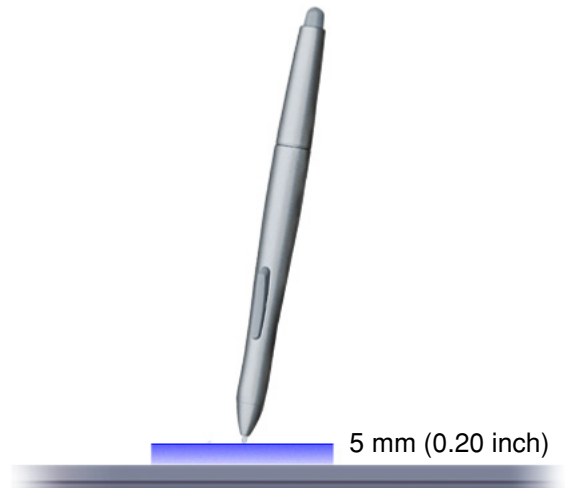
- In PEN MODE, the tablet active area is a mapped representation of your computer screen where every point on the active area corresponds to exactly one point on the display screen; wherever you place the pen on the tablet, the screen cursor will jump to the corresponding point on the screen. This is the default setting for the pen.
- In MOUSE MODE, the default setting for the cordless mouse, you move the cursor with a “pick up and slide” motion similar to using a traditional mouse.



Try moving the screen cursor by lifting the pen and placing the pen tip in a new location on the tablet. The cursor instantly jumps to the new location.

When positioning the screen cursor and operating the side switch, the pen tip needs to be within 5 mm (0.20 inch) of the tablet surface. You do not need to touch the tablet with the pen tip in order to move the screen cursor or use the side switch.

The cordless mouse works similarly to the pen, and works only over the active area of the tablet.



Hints:

- If you are used to working with a mouse and find that using a pen is somewhat difficult, try the [eye-hand coordination exercise](#).
- Pointing is easier when you orient the tablet so the screen cursor follows the same direction as your hand movements on the tablet.

Clicking

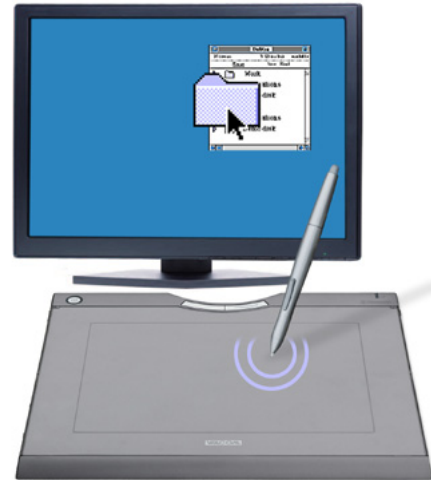
You typically click to highlight or select something on the screen, and double-click to open it.

Clicking. To click, tap the pen tip once on the tablet, or press the pen tip on the tablet with enough force to register a click. (If **CLICK SOUND** is selected in the Pen Tablet control panel and your computer speakers are on, then you will hear a “click” sound when the pen tip is pressed hard enough to generate a mouse click. Adjust your speaker volume as necessary.) Try clicking on a folder icon by moving the screen cursor over the icon and pressing down on the pen tip. The folder should highlight when you press.

Double Clicking. To double-click, quickly tap the tablet twice in the same place with the pen tip. This is like clicking twice with a mouse button. Try double-clicking on a folder icon to open it.

Hints:

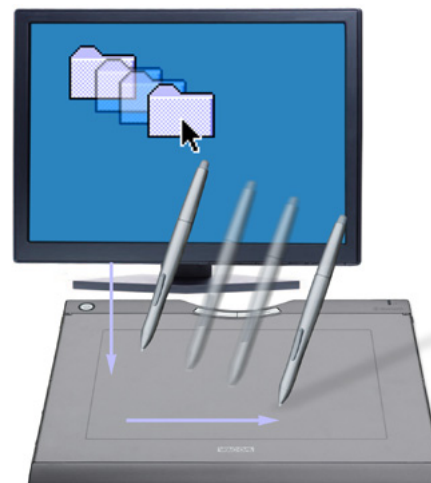
- Press the upper side switch to double-click. This is easier than tapping twice with the pen tip, and is the preferred method of double-clicking with a pen.
- **Windows:** You can make navigating with the pen easier by configuring Windows to select when the pen is over an icon and to launch the icon with a single click. To turn on this feature, first open a folder. Select the **TOOLS** pull-down menu, and **FOLDER OPTIONS...** Then from the **GENERAL** tab select the option **SINGLE-CLICK TO OPEN AN ITEM (POINT TO SELECT)**.



Dragging

Dragging is used to select and move objects on the screen. To drag, first point to an object. Then press the pen tip to the tablet and slide it across the tablet surface. The selected object will move across the screen. To select text, move the screen cursor to the beginning of a text line, then drag the pen across the tablet until the text is highlighted.

First, try moving an icon on the screen. Then, within a document, select some text by pressing and dragging the pen tip across the text.



Using the side switch

The Graphire pen is equipped with a DuoSwitch. This switch has two programmable functions that can be selected by rocking the switch in either direction. You can use the DuoSwitch whenever the pen tip is within 5 mm (0.20 inch) of the tablet active area. You do not have to touch the pen tip to the tablet in order to use the switch.

The upper switch position is set to DOUBLE CLICK, and the lower switch is set to RIGHT CLICK by default.



Hints:

- Press the upper side switch to double-click. This is easier than tapping twice with the pen tip.
- Use a right-click to bring up application-specific or icon-specific menus.

To assign new switch functions, see [customizing the side switch](#).

Drawing with pressure-sensitivity

The Graphire pen responds to the nuance and inflection of your hand movements, enabling you to create natural-looking pen and brush strokes. Many graphics applications have drawing tools that respond to the pressure you place on the pen. For example, in some drawing programs sliders are used to vary brush characteristics (width, color, and opacity). These characteristics can be controlled much better by the pen's pressure-sensitivity – you can vary line width, blend colors, and change opacity with the pressure you exert upon the pen.

To draw with pressure-sensitivity, first select a pressure-sensitive tool from your application's tool palette. Then draw along the surface of the tablet while applying various amounts of pressure downward on the tip of the pen. Press hard for thick lines or dense color. Press gently for thin lines or softer color. To adjust the tip feel, see [adjusting tip feel, eraser feel, and double-click](#).

Visit our web site for a list of graphics applications that support pressure. See [product information](#).



Erasing

The eraser on the Graphire pen works like the eraser on a pencil. In graphics applications that support the pen eraser, you can erase intuitively and naturally. When you use the pen eraser, the application will automatically switch to the eraser tool. In applications that support pressure-sensitivity, you can select pressure-sensitive tools in an application's tool palette to vary the width and depth of your erasures as you change the amount of pressure you exert upon the pen.

For Windows, you can also use the eraser in many standard office applications. The eraser will not be pressure sensitive in these applications, but you can use it to select and delete text or spreadsheet cells.

For more information on using your eraser, see [adjusting tip feel, eraser feel, and double-click](#).

Visit our web site for a list of graphics applications that support the eraser (see [product information](#)). If the eraser is not supported in an application, you can still use the eraser for navigating and drawing.

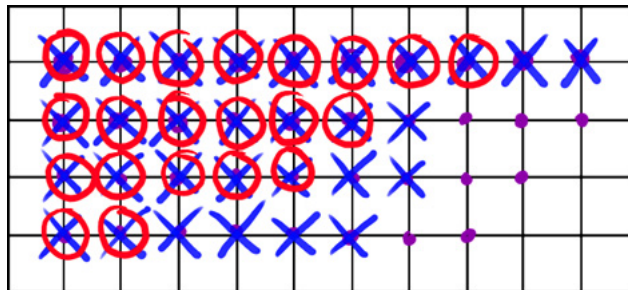


Eye-hand coordination exercise

If you use a mouse, you may remember how long it took to get used to positioning the screen cursor. Your Graphire pen, likewise, will take a bit of practice to master the technique of positioning the screen cursor in [PEN MODE](#). This may seem difficult at first, but it is more natural and faster than in [MOUSE MODE](#).

This exercise is designed to retrain your eye-hand coordination for using the pen:

1. Open any graphics application. Use the line tool to draw a rectangular grid with line spacings of about 20-25 mm (3/4 to 1 inch). You can use your traditional mouse to do this.
2. Choose a free-hand tool in your application and use the pen to draw a dot at each grid intersection.
3. Draw an X at each grid intersection.
4. Now draw a circle around each intersection. Your screen should look like this:



5. Clear your screen and make a simple drawing of your own. The more you use your pen, the easier drawing and navigation will become.

Using the cordless mouse

The Graphire cordless mouse is battery-free and works on your Graphire Bluetooth pen tablet.

The fingerwheel can be rolled, or pressed for an additional button function.

- **Rolling.** By default, the fingerwheel is set to SCROLL 3 lines per wheel notch in most windows and applications. Move the fingerwheel forward to scroll up, and back to scroll down.
- **Wheel button.** Press down on the wheel to perform a button click. The wheel button is set to MIDDLE CLICK by default.

The right button is set to RIGHT-CLICK by default, and displays a context menu when pressed.



The left button is set to CLICK by default, and is the primary button used for selecting.

Hint: For MS Office applications that support a wheel mouse, press the CTRL key and move the fingerwheel to zoom in and out.

Important: When the cordless mouse is not in use, place it on your desk. Leaving a Graphire tool on the tablet may interfere with screen cursor positioning when using other pointing devices, or may prevent your computer from going to sleep.

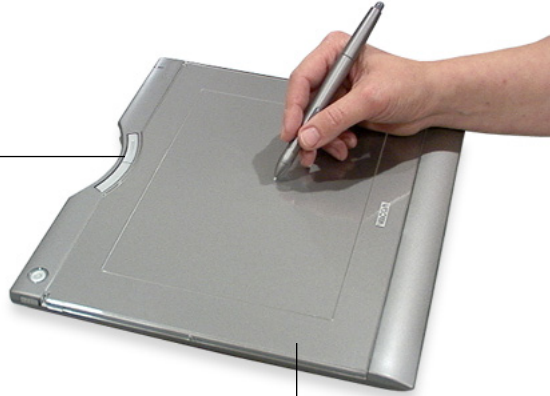
To learn how to adjust the mouse behavior for your preferences, see [customizing the cordless mouse](#).

Working with the tablet

Your Graphire Bluetooth pen tablet is designed to enhance the way you work. The middle area of the tablet is the working, or active, area for the pen and cordless mouse. Rest your hand on the tablet and then work with the pen on the active area of the tablet just as if you were using a ball point pen on a piece of paper. Wherever you place your pen on the tablet active area, the screen cursor will jump to the corresponding point on the screen. See [using the cordless pen](#) and [using the cordless mouse](#) for more information about using your input devices on the tablet.

Your tablet also features customizable ExpressKeys located above the tablet active area. By default, the ExpressKeys are set to simulate the FORWARD and BACK functions within Internet browsers.

[ExpressKeys](#). Press the keys to move FORWARD (right key) or BACK (left key) within your Internet browser. You can also customize the keys to perform frequently used functions or keystrokes.

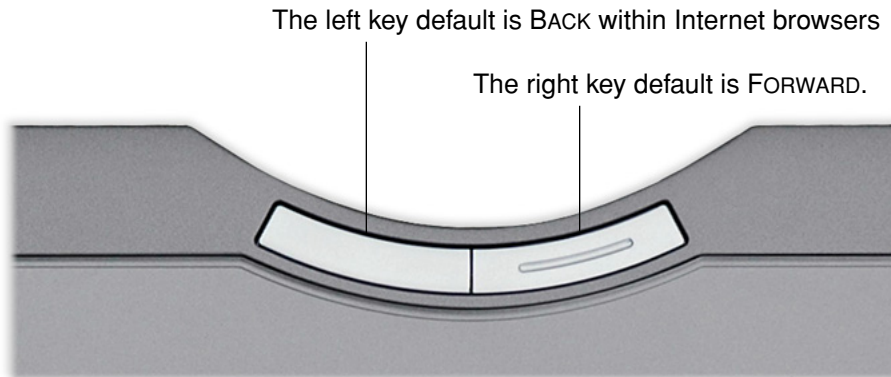


The transparent photo frame allows you to customize Graphire Bluetooth with your favorite photos or artwork. See [changing the tablet underlay](#) for details.

See [battery and power management](#) for detailed information about tablet power management.

Using the ExpressKeys

By default, the customizable ExpressKeys are set to perform the FORWARD and BACK functions within most Internet browsers.



You might consider some of these alternate ways of using the ExpressKeys:

- Set a key to a commonly used keyboard shortcut.
- Set a key to launch a commonly used file or application, such as your email program.
- If you prefer not to (or cannot) use the side switches on your Graphire pen, then set a key to right- or double-click.
- Choose from any of the other available functions.

Depending on the function you have chosen, you can also press the keys with your secondary hand to toggle between tools or change tool properties while you are using your primary hand to work with your pen on the tablet.

Note also that the tablet ExpressKeys are chordable, which means you can press both keys simultaneously. For example, if you program one key to simulate the CTRL key and another to simulate an ALT keystroke, when you press both keys a CTRL+ALT is simulated.

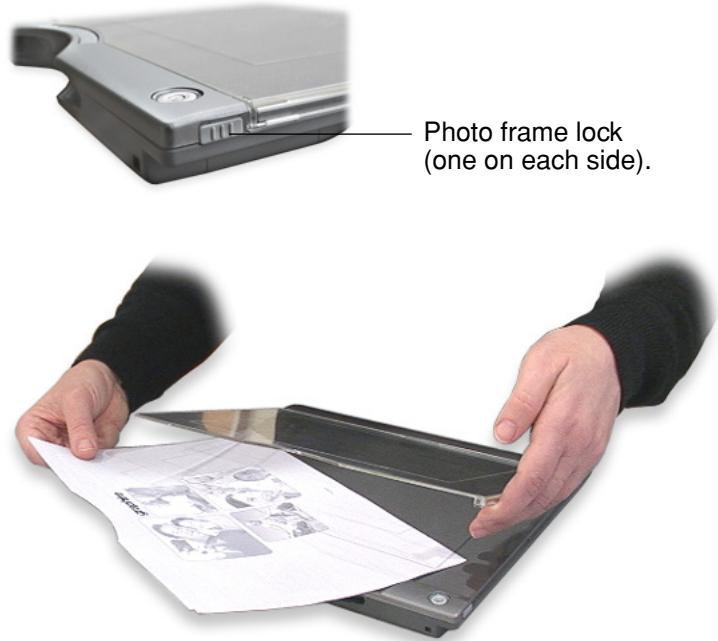
See [working with tablet properties](#) for more details on the available settings.

Changing the tablet underlay

Some configurations of the tablet come with a printed underlay that can be seen through the transparent photo frame. You can replace the underlay with a favorite photo or design of your own by following these steps:

1. To remove the photo frame, slide the two photo frame locks located on each side of the tablet to the unlocked position (toward the top of the tablet). Then grasp the upper edges of the photo frame with your finger tips and lift the photo frame away from the tablet.
2. Lift away the printed underlay and replace it with a new photo or design of your choosing.
3. To replace the photo frame, insert the tabs located on the lower edge of the cover into the slots on the tablet. Then lower the photo frame into place and slide the photo frame locks to the locked position (towards the bottom of the tablet). This will protect your photo or design as you work on the tablet.

To create a new tablet underlay, follow the tips in the next section.



Creating a new tablet underlay

If you would like to create an image that you can use for the tablet underlay, you can use the templates provided on the Wacom Pen Tablet Driver CD as a starting point:

1. Insert the Wacom Pen Tablet Driver CD into your computer and locate the TEMPLATES folder.
2. Open the folder to access the template files. Template files come in various formats that can be modified within any graphics application that supports .jpg or .psd formatted files.
3. Choose one of the pre-designed or blank templates. Then modify it to create your own design.
4. When you are done, print out your new tablet underlay. Use photo-quality paper for best results.
5. Trim the new underlay to size and place it beneath the tablet photo frame. See above.

CUSTOMIZING

After you master the basics of using your Graphire pen tablet, you may want to customize the way the pen or cordless mouse works. This chapter describes how to use the Pen Tablet control panel to adjust your Graphire tablet and tool settings.

[Opening the control panel](#)

[Control panel overview](#)

[Control panel settings](#)

Opening the control panel

To open the control panel, use the Graphire tool you wish to customize on the tablet:

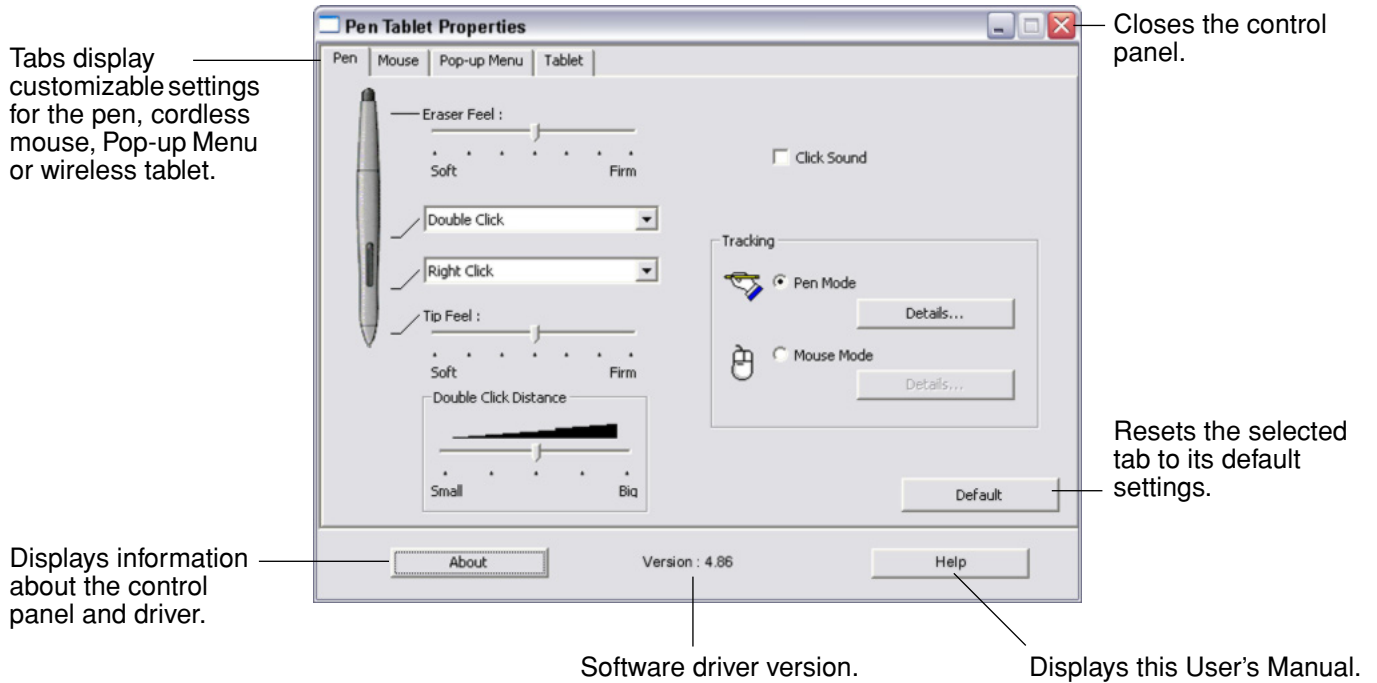
- **Windows.** Click on the Windows START button and choose ALL PROGRAMS. (For Windows 2000, choose the PROGRAMS group.) Then select PEN TABLET and choose the PEN TABLET option.
- **Macintosh.** Open SYSTEM PREFERENCES from either the Dock, the Apple menu, or from the APPLICATIONS folder. Then click on the PEN TABLET icon.

After you have opened the Pen Tablet control panel, you can begin customizing Graphire.

Note: When more than one Wacom tablet is installed on a single computer, any changes made in the Pen Tablet control panel will be applied only to the tablet that was last used before opening the control panel.

Control panel overview

Use the Pen Tablet control panel to customize your Graphire pen, mouse, and tablet.



As you explore the control panel, experiment with different settings to find what works best for you. Any changes you make will take effect immediately, but you can always click DEFAULT to return a tab to the factory settings. See [control panel settings](#) for more information on the features and functions of each tab.

Tool Tips are available for most control panel items. Simply position the screen cursor over an item and let it rest there; in a few moments the Tool Tip will pop up.

Additionally, your keyboard tab and arrow keys can be used to navigate the control panel.

Control panel settings

Use these sections as a reference when working with the Pen Tablet control panel; they provide detailed information about each tab. Many of the sections also contain useful customizing tips.

- [Customizing the pen](#)
- [Customizing the cordless mouse](#)
- [Tablet tracking](#)
- [Working with tablet properties](#)
- [Customizing the Pop-up Menu](#)

Customizing the pen

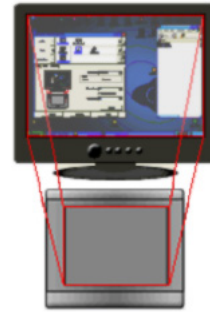
Customizing your Graphire pen is easy. First open the Pen Tablet control panel and select the PEN tab to choose from the available options.



[Adjusting eraser feel](#)

[Customizing the side switch](#)

[Adjusting tip feel and double-click](#)



[Tablet tracking](#)

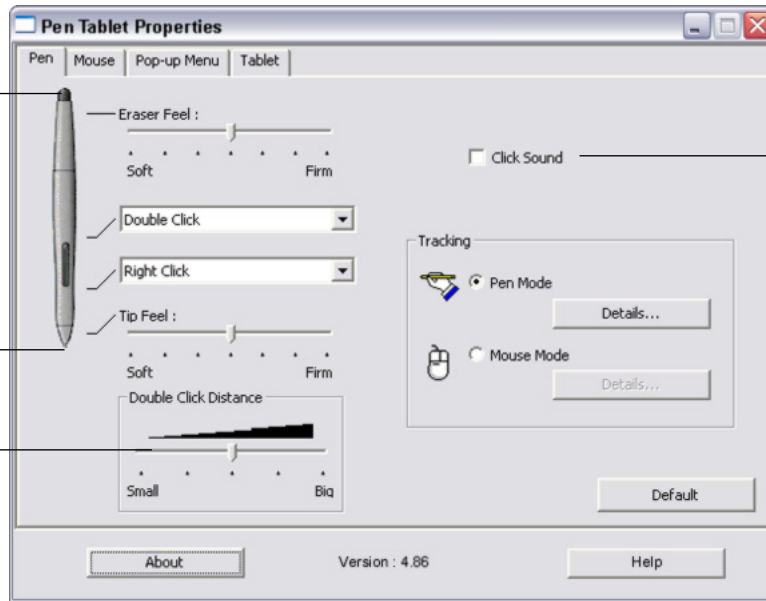
Adjusting tip feel, eraser feel, and double-click

To adjust the tip or eraser sensitivity of your Graphire pen, select the PEN tab. To create broad brush strokes or to click with a light touch, use a soft tip setting. For maximum control while drawing thin lines, use a firm tip setting. To erase with a broad stroke or to click with a light touch, use a soft eraser setting. For maximum control while erasing, use a firm eraser setting.

Customizes the amount of pressure needed to erase. Drag the slider to a softer or firmer setting.

Customizes the amount of pressure needed to click or draw. Drag the slider to a softer or firmer setting.

Adjusts the size of the double-click area and the double-click speed. A larger setting makes double-clicking easier.



When checked, an audible “click” sound will be heard whenever a pen click occurs and your computer speakers are turned on.

Hints:

- Use a soft TIP FEEL for a wider range of pressure values with most pressure-sensitive applications.
- In some applications, a soft pressure setting can make the pen overreact – any small press on the pen is magnified on the screen. If you experience this, try a firmer TIP FEEL setting.
- Double-clicking: To make double-clicking easier, expand the tap area that accepts a double-click (the double-click distance).

Note: A large double-click distance may cause a delay at the beginning of your brushstrokes in some drawing applications. If you notice such effects, try setting a smaller double-click distance and using the side switch to double-click (see [using the side switch](#)). You can also set one of the ExpressKeys to double-click.

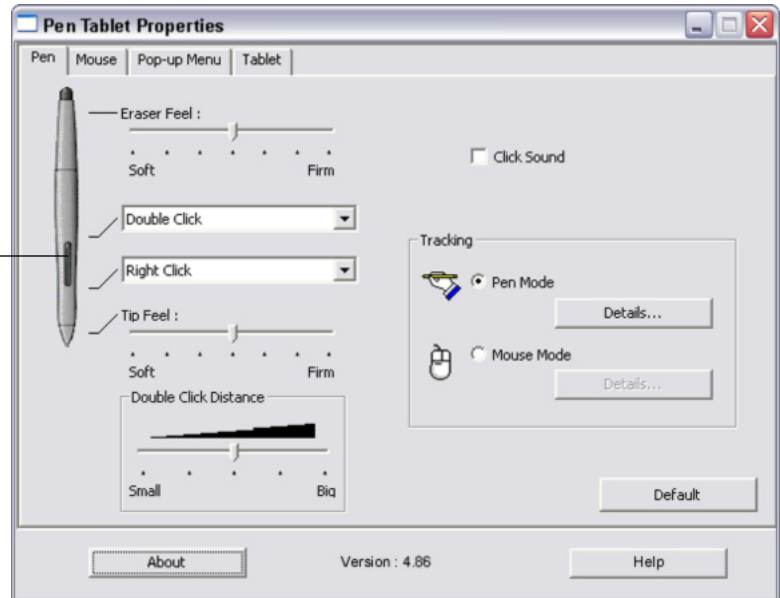
Customizing the side switch

Select the PEN tab to change the functions assigned to the side switch of your Graphire pen. The DuoSwitch can be set to simulate a variety of mouse functions; the pull-down menus enable you to choose the function that will be performed.

Select the [button functions](#) to perform when pressing the upper or lower side switch.

When you bring the pen tip within 5 mm (0.20 inch) of the tablet surface without touching the tablet and press the upper or lower side switch, the selected function occurs.

Hint: To make double-clicking easier, set the side switch to double-click automatically by selecting DOUBLE CLICK.



Button functions

The following list describes the options available for tool button, tablet ExpressKeys, or Pop-up Menu settings. Please note that not all options are available for all controls.

CLICK. Default setting for the pen tip. This option simulates a primary mouse button click.

DOUBLE CLICK. Simulates a double-click. For easier double-clicking, use this function instead of tapping twice with the tip of your pen.

MIDDLE CLICK. Simulates a middle mouse button click.

RIGHT CLICK. Simulates a right mouse button click, which displays a context menu.

CLICK LOCK. Simulates holding down the primary mouse button. Press the tool button once to initiate click lock. Press the button again to release click lock. Click lock is useful for dragging objects or selecting blocks of text.

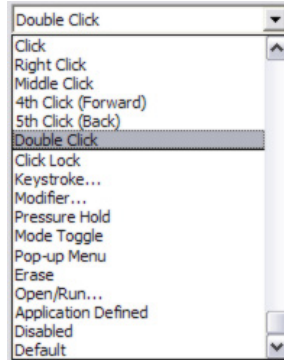
4TH CLICK (FORWARD). Simulates a 4th mouse button click, which on Windows systems typically issues the FORWARD command in browser applications.

5TH CLICK (BACK). Simulates a 5th mouse button click, which typically issues the BACK command in browser applications.

APPLICATION DEFINED. (Windows systems and Graphire cordless mouse only.) Reports only the button number to the application. This is for applications, such as CAD programs, that have built-in support for the Graphire cordless mouse.

DEFAULT. Returns a button to its default setting.

DISABLED. Disables the button function.



ERASE. (Pen only.) Sets a button so that when the button is pressed, the pen tip will act like the eraser in applications that support the ERASE function. See [erasing](#) for information on using the eraser.

INK TOGGLE. (Macintosh.) Toggles the Ink ANYWHERE function of Inkwell on and off. Inkwell automatically recognizes and converts your handwriting into text and inserts it into a document. Note that Ink must be turned on for this function to work. See your Macintosh help for information on working with Inkwell.

KEYSTROKES.... Enables you to simulate keystrokes.

MODE TOGGLE.... Toggles between PEN MODE and MOUSE MODE. See [setting mouse speed](#) for details.

MODIFIER.... Enables you to simulate modifier keys.

OPEN/RUN.... Opens an application, file, or script.

POP-UP MENU. Displays a Pop-up Menu on your screen. See [customizing the Pop-up Menu](#) for more information.

PRESSURE HOLD. Locks the pressure at the current pressure level until the button is released. For example, you can paint with pressure-sensitivity until you reach the brush size that you like. You can then press the button and continue painting with the same size brush until the button is released.



- **KEYSTROKES....** Enables you to simulate keystrokes. Selecting this option displays the DEFINE KEYSTROKE dialog box where you can enter a keystroke or keystroke sequence to play back.

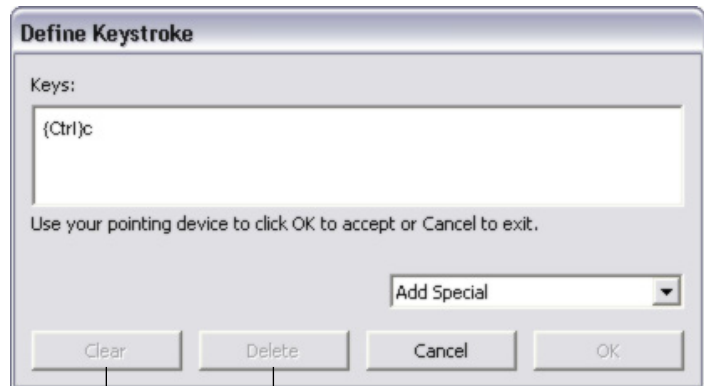
You can manually enter a keystroke or keystroke combination in the KEYS entry box. Keystroke combinations can include letters, numbers, function keys (such as F3) and modifier keys (such as SHIFT, ALT, or CTRL for Windows, or SHIFT, OPTION, COMMAND, and CONTROL for Macintosh).

You can also select special keystrokes or keystroke combinations from the ADD SPECIAL drop-down menu. When you make a selection it is added to the KEYS entry box.

After defining a keystroke sequence, click OK.

Important: Because the ENTER (Windows) and RETURN (Macintosh) keys can be selected as a defined keystroke, they cannot be used to select OK. You must use your Graphire tool to click on the OK button.

If prompted, enter a name for the keystroke definition. The name will be displayed with the respective control or in the Pop-up Menu list, as applicable.



Clears the keystroke entry box.

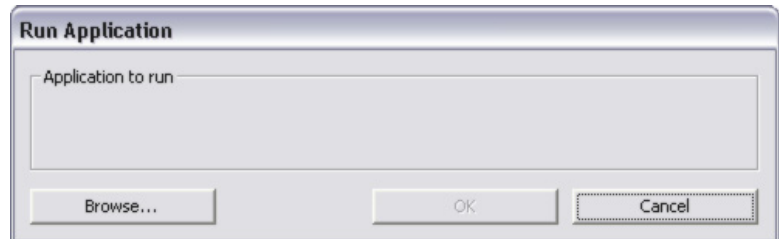
Deletes only the last entry in the keystroke entry box.

- **OPEN/RUN....** Opens a dialog box where you can select a specific application, file, or script to launch.

Click BROWSE... to locate an application, file, or script to launch. The selection you make appears in the APPLICATION TO RUN box.

Click OK to accept the selection. The dialog box will close and the OPEN/RUN... option will be assigned as your tool button option. If your selection is for the Pop-up Menu, it will be displayed in the Pop-up Menu list.

The next time you press the tool button or make a selection from the Pop-up Menu, the defined application, file, or script will launch.



- **MODIFIER....** Enables you to assign modifier key(s) (such as SHIFT, ALT, or CTRL for Windows, or SHIFT, OPTION, COMMAND, and CONTROL for Macintosh). Many applications use modifier keys to constrain the size or placement of objects. Selecting this option displays the DEFINE MODIFIER dialog box where you can assign one or more modifier key functions. After choosing the modifier function(s), click OK.

In addition to choosing one or more modifier key options, you can select the CLICK box if you want a mouse click to occur whenever you press the tool button.



Customizing the cordless mouse

Customizing your Graphire cordless mouse is easy. First open the Pen Tablet control panel and select the MOUSE tab to choose from the available options.



[Customizing mouse buttons](#)



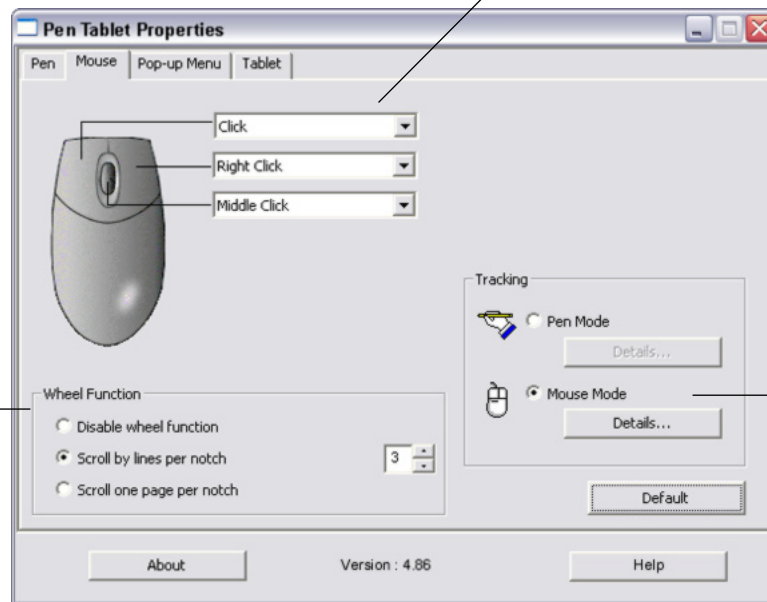
[Mouse mode settings](#)

Customizing mouse buttons

To modify your Graphire cordless mouse button settings, use your mouse to open the Pen Tablet control panel and select a function to perform for each button from the pull-down menus. See [button functions](#) for a description of the available options. The cordless mouse buttons are chordable; you can press two or more buttons simultaneously. For example, if you set one button to simulate the CTRL key and another to simulate an ALT keystroke, when you press both buttons a CTRL+ALT is simulated.

Select the function to perform when pressing a button.

By default, the fingerwheel controls scrolling in most windows and applications. Use these options to customize the fingerwheel function. You can disable the fingerwheel function, set the fingerwheel to scroll a selected number of lines (one to 15) for each notch of wheel movement, or set the fingerwheel to scroll one page for each notch of wheel movement.



The TRACKING mode you select controls how the screen cursor moves.

In MOUSE MODE, the screen cursor moves with relative positioning. This is the default TRACKING mode for the cordless mouse.

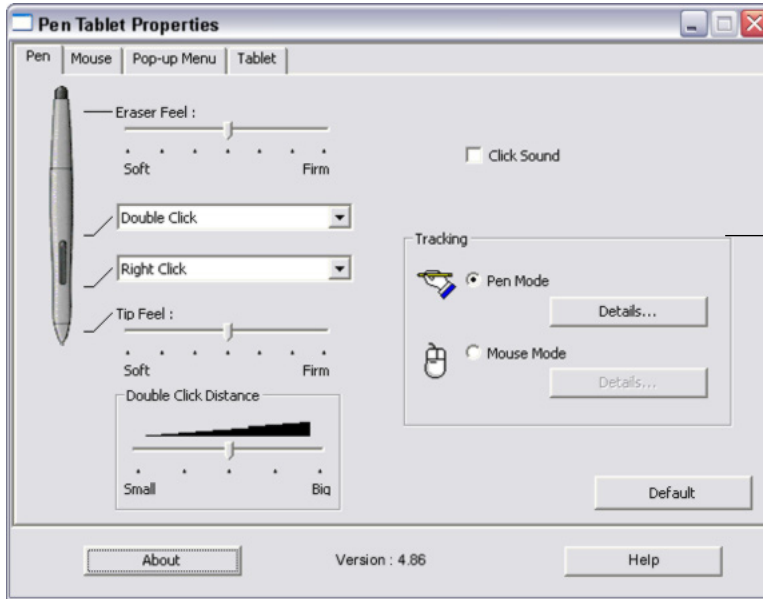
Click DETAILS... for [setting mouse speed](#).

Notes:

- The MOUSE tab will not display until you have used a cordless mouse on the tablet.
- To configure the cordless mouse for left-handed use, simply reassign the button functions as needed.
- You can switch between PEN MODE and MOUSE MODE by using the screen Pop-up Menu. See [customizing the Pop-up Menu](#) for more information. If you frequently switch between PEN MODE and MOUSE MODE, you can assign the MODE TOGGLE... function to one of your tool buttons.

Tablet tracking

The tablet TRACKING options enable you to determine the relationship between pen (or cordless mouse) movement on the tablet surface and cursor movement on the monitor screen. By default the entire active area of the tablet maps to the entire monitor. If more than one monitor is in use the tablet will map to all monitors. See [mapping to multiple monitors](#).



The TRACKING mode you select controls how the screen cursor moves:

- Select PEN MODE to set the cursor so that its movement corresponds with the position of your Graphire tool on the tablet – wherever you place your tool on the tablet, the cursor will jump to a corresponding point on the screen. This is known as absolute positioning, and is the default setting for the Graphire pen. Click DETAILS... to customize the [tablet mapping](#).
- Select MOUSE MODE to move the screen cursor with a “pick up and slide” motion similar to using a traditional mouse. This is the default setting for the cordless mouse. Click DETAILS... for [setting mouse speed](#).

By default, the pen is set to PEN MODE, and the cordless mouse is set to MOUSE MODE for navigation.

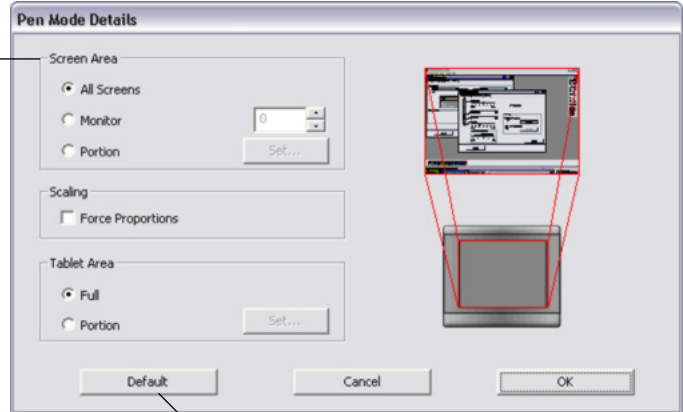
Note: If you frequently switch between PEN MODE and MOUSE MODE, you can assign the MODE TOGGLE... function to one of your tool buttons.



When you click on the PEN MODE DETAILS... button, the PEN MODE DETAILS dialog box is displayed.

Use the SCREEN AREA options to select a screen area for tablet to screen mapping.

- ALL SCREENS. The entire monitor(s) area is mapped; this is the default setting. See [mapping to multiple monitors](#) for more information.
- MONITOR. The entire area of a single monitor that you choose is mapped.
- PORTION. A portion of the desktop area is mapped. Click SET... to open a dialog box where you can set the [portion of screen area](#).



Returns settings to their factory defaults.

Mapping to multiple monitors

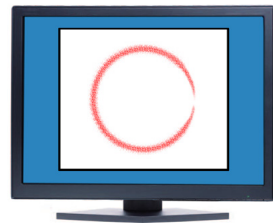
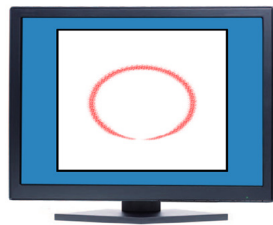
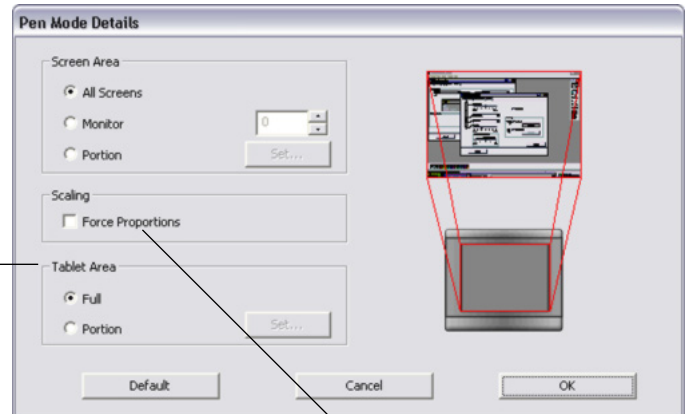
If your computer has more than one monitor, Graphire will map to your monitors based upon how they are configured in the DISPLAY PROPERTIES control panel. If ALL SCREENS is selected and you are in extended monitor mode, the tablet will map to all monitors as if they were one large display. If the monitors are in mirror mode, the tablet will map to the entire space on each monitor and the screen cursor will be displayed on each monitor simultaneously.

Please refer to your hardware and operating system documentation for details on configuring your computer and operating system for use with multiple monitors.



Use the TABLET AREA options to select a tablet area for tablet to screen mapping.

- FULL. The entire active area of the tablet is mapped. This is the default setting.
- PORTION. A portion of the tablet area is mapped. Click SET... to open a dialog box where you can set the portion of tablet area.



FORCE PROPORTIONS. Check or uncheck the box to determine the tablet to screen mapping relationship.

- When unchecked, the correct scale or proportions are not maintained. The selected tablet area is mapped to the selected display area. Drawing a circle on the tablet may create an ellipse on the display screen. This is the default setting.
- When checked, the correct vertical and horizontal proportions are maintained between the tablet and display. Drawing a circle on the tablet results in a circle on the display screen. Depending on your settings, some portions of the tablet active area may no longer be usable when this option is selected.

Portion of screen area

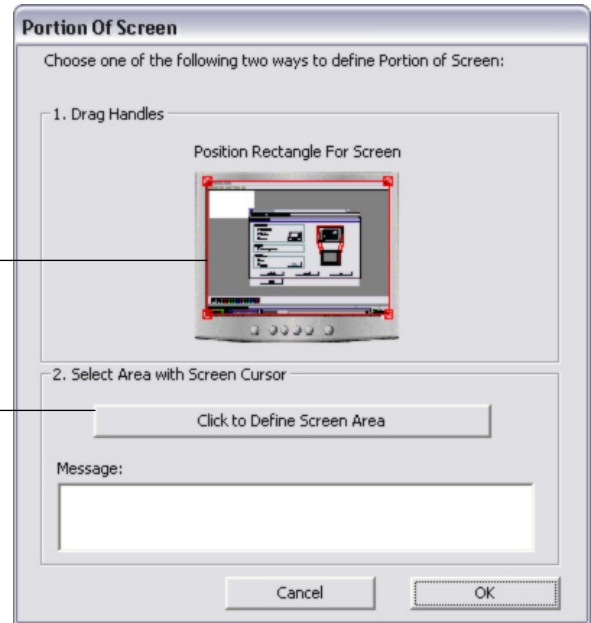
The tracking options in the PEN MODE DETAILS dialog box allow you to define which portion of the display screen your tablet will map to:

- **ALL SCREENS.** When selected, the entire monitor(s) area is mapped. This is the default setting. See [mapping to multiple monitors](#) for more information.
- **MONITOR.** When selected, the entire area of a single monitor that you choose is mapped.
- **PORZION.** When selected, this option allows you to select a portion of the display for tablet to screen mapping. Click SET... to open the PORTION OF SCREEN dialog box.

Choose a method for defining a portion of the display:

- Drag corners of the foreground graphic to select the screen area. The background graphic represents the entire screen area.
- Move the screen cursor to select the screen area. Select the **CLICK TO DEFINE SCREEN AREA** button. As you define PORTION OF SCREEN, follow any MESSAGE prompts to set the portion of your display screen that will be used for mapping.

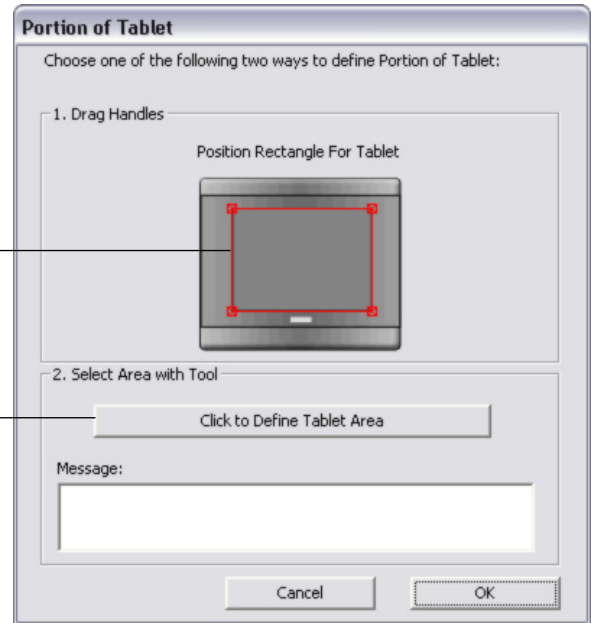
After defining a portion of the screen, you may need to use a different input device to access other portions of the screen area.



Portion of tablet area

The tracking options in the PEN MODE DETAILS dialog box allow you to define the tablet area that will be mapped to the screen area:

- **FULL.** When selected, the entire active area of the tablet is used for tablet to display mapping. This is the default setting.
- **PORTION.** When selected, this option allows you to select a portion of the tablet active area for tablet to screen mapping. Click SET... to open the Portion of Tablet dialog box.

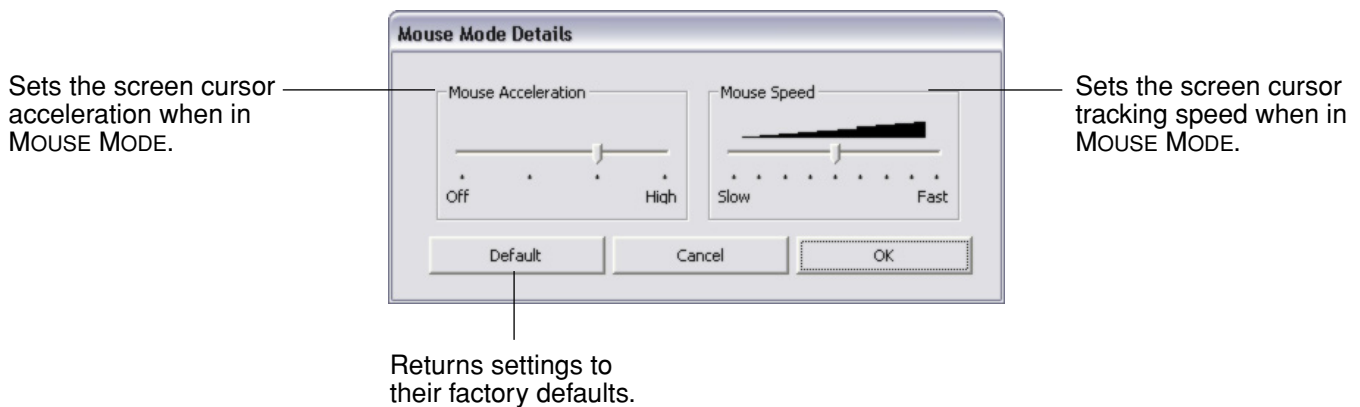


Choose a method for defining a portion of the tablet:

- Drag corners of the foreground graphic to select the tablet area that will be mapped to your selected screen area. The background graphic represents the tablet.
- Use your tool on the tablet to select the tablet area. Select the CLICK TO DEFINE TABLET AREA button. As you define PORTION OF TABLET, follow any MESSAGE prompts to set the portion of your tablet that will be used for mapping.

Setting mouse speed

To change the screen cursor acceleration and speed when in MOUSE MODE, click on the MOUSE MODE DETAILS... button (located on the PEN or MOUSE tabs) to display a dialog box where you can make your adjustments.



Sets the screen cursor acceleration when in MOUSE MODE.

Sets the screen cursor tracking speed when in MOUSE MODE.

Returns settings to their factory defaults.

Note: The dialog box will also appear when you first set a tool button to MODE TOGGLE.... Although MOUSE MODE settings can be accessed from a number of different locations within the control panel, only one ACCELERATION and SPEED setting can be made for each input tool that you are customizing.

Working with tablet properties

The TABLET tab is used to customize the ExpressKeys and the Bluetooth data transmission rate of Graphire Bluetooth. It also contains a BATTERY STATUS indicator.

The ExpressKeys can be customized to perform a modifier, keystroke, or other function. See [using the ExpressKeys](#) for the default key settings.

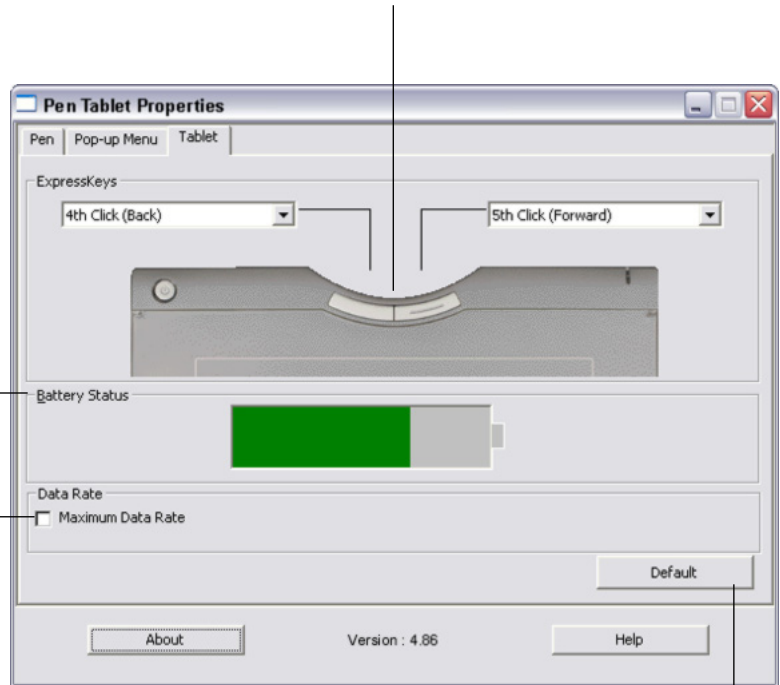
Use the pull-down menus to choose a [function](#) that will be performed when the key is pressed.

Your choice will be displayed either within the pull-down menu or beneath the menu.

The BATTERY STATUS indicator shows you the percentage of battery charge remaining.

- A green level indicates the battery charge is greater than 25%.
- A red level indicates the battery charge is at or less than 25%.
- A power plug icon indicates that the external power adapter is plugged in.
- A “?” mark indicates the tablet is not detected. The tablet may have switched off automatically. See [power saving features](#).

When unchecked, the tablet will send less data to the computer. This may reduce screen cursor lag caused by a weak Bluetooth connection. The best setting to use for graphics or handwriting applications is MAXIMUM DATA RATE selected.



Returns the tab settings to their factory default conditions.

Note: For Windows systems, a battery level icon is also displayed on the Windows Taskbar when the tablet is running under battery power. When operating under outlet power, a power plug icon will be displayed instead.

Customizing the Pop-up Menu

Use the POP-UP MENU tab to define the available functions on the Pop-up Menu list.

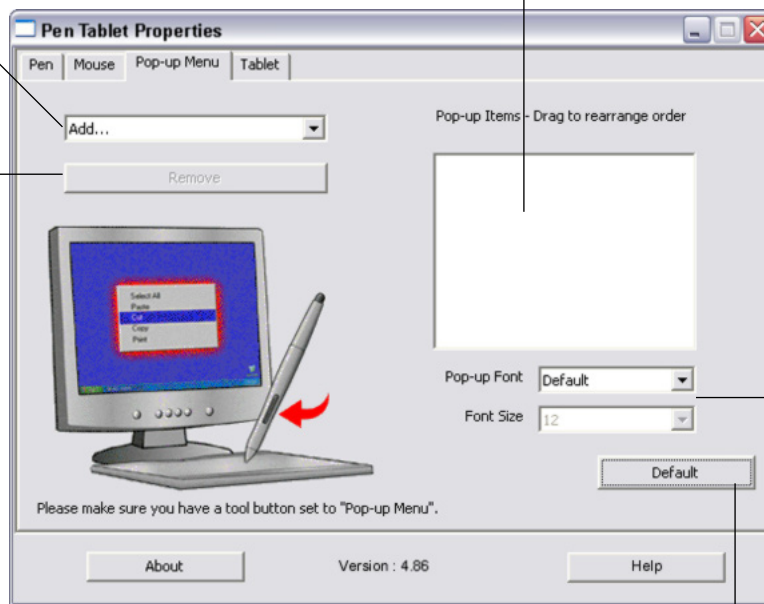
To display the Pop-up Menu, set one of your tool buttons to the POP-UP MENU function. Whenever you press that button, the Pop-up Menu is displayed. Select from available items in the Pop-up Menu by clicking on them. To close the Pop-up Menu without making a selection, click outside of the Pop-up Menu.

Displays a list of functions that have been added to the Pop-up Menu. To change the order of an item, drag it to a new location. Double-click on an item to make edits.

Note: PEN places your tool in PEN MODE. MOUSE places your tool in MOUSE MODE. When adding MOUSE mode to the Pop-up Menu list, the MOUSE MODE DETAILS dialog box is displayed where you can adjust the mouse acceleration and speed.

Select a button
functions option to add
to the Pop-up Menu list.

Removes the selected
item from the list.



Menu options enable
you to change the
appearance (FONT
SIZE and POP-UP
FONT) of the Pop-up
Menu.

Returns all tab settings to their default values.

Important: This action will delete all Pop-up Menu items that have been defined.

TROUBLESHOOTING

Most of the time your tablet will work flawlessly. But if you are having trouble, Wacom recommends you do the following:

1. If the Wacom tablet driver failed to load properly, first perform the recommended action in any error message that may appear on your screen. If that does not solve the problem, refer to the troubleshooting procedures in this chapter.
2. Look in the [troubleshooting tables](#). Your problem may be described there and you can try the solution offered.
3. Open the Wacom tablet Read Me file for late-breaking information.
4. Test your tablet and input tools. See [testing your tablet](#) and [testing your tools](#).
5. If you are having a compatibility conflict between Graphire and a new hardware or software product, check if a newer Wacom tablet software driver is available. See [obtaining driver downloads](#) for information on downloading an updated software driver. Wacom periodically updates the software driver to maintain compatibility with new products.
6. Check the FAQs (Frequently Asked Questions) on the Wacom web site for your region.
7. If you have tried the suggestions in this manual and still cannot resolve the problem, then contact Wacom for Technical Support. See [technical support options](#) and the Read Me file for information on where to obtain support for your region.

[Testing your tablet](#)

[Testing your tools](#)

[Troubleshooting tables](#)

[Technical support options](#)

[Obtaining driver downloads](#)

Testing your tablet

Turn on your computer and wait until the system has fully loaded. Make sure that your computer has a working Bluetooth connection, either through built-in Bluetooth support or a USB-to-Bluetooth adapter. If you have another Bluetooth device such as a mouse or keyboard, make sure it is working.

1. **Check the AC power adapter.** With the power adapter connected to the tablet and an active power source, the charging indicator will glow a steady green if the battery is fully charged. (For Windows systems, a power plug icon is also displayed on the Windows Taskbar.) If the battery is charging, the indicator will glow orange. The indicator will be off if the power adapter is not plugged in or is not connected to an active power outlet.
2. **Check the Bluetooth connection.** Switch on the Graphire Bluetooth pen tablet by pressing and releasing the power button. If the power indicator light stays on for more than five seconds, your Bluetooth connection is working. Otherwise, it is not.

If necessary, troubleshoot the connection as follows:

- If you have an external USB-to-Bluetooth adapter, make sure it is plugged into an active USB port or hub on your computer.
 - If you have built-in Bluetooth support, make sure it is turned on.
 - Make sure your Bluetooth support is working properly. Test the functionality with a different wireless Bluetooth device or check the documentation that came with your Bluetooth support to make sure it is working correctly.
 - On Windows systems, make sure that you have installed your Bluetooth wireless device drivers correctly. (Some USB-to-Bluetooth adapters are supported in Windows XP, SP-2 and do not need a driver. Refer to your Microsoft documentation for details.)
 - Make sure that your Bluetooth configuration supports Bluetooth Specification v1.1 or higher, and the HID profile.
 - Make another attempt to pair the tablet to your system. See [establishing a Bluetooth connection](#).
3. **Check the tablet ExpressKeys.** The power indicator light should turn green when a button is pressed.

Testing your tools

If your tool does not work as you expect, it is a good idea to first check the assigned functions or to reset the tool to its default condition using the Pen Tablet control panel.

1. Check the pen.

- Move your pen across the active area of the tablet; the screen cursor should move in the corresponding direction on your monitor or display screen.
- Press the pen tip against the surface of the tablet. The power indicator light should turn from blue to green.
- Next, without applying pressure to the pen tip, hold the pen tip within approximately 5 mm (0.20 inch) above the tablet surface and press the side switch. The power indicator light should again change from blue to green.
- Turn the pen over and press the eraser against the surface of the tablet; the power indicator light should change from blue to green.
- If not, you may have a defective pen or tablet. See [technical support options](#).

2. Check the cordless mouse.

- Move the cordless mouse across the active area of the tablet; the screen cursor should move in the corresponding direction on your monitor.
- Test the buttons on your cordless mouse by clicking each button. The tablet power indicator light should turn green when a button is pressed.
- If not, you may have a defective cordless mouse or tablet. See [technical support options](#).

Troubleshooting tables

If you encounter problems with your Graphire tools or tablet, refer to the following tables. Your problem may be described here, and you can try the solution offered. Be sure you refer to the Read Me file for the latest information updates.

For additional information, visit Wacom's web site at <http://www.wacom.com/productsupport> and follow the links to the FAQs.

[Connection problems](#)

[General problems](#)

[Windows-specific problems](#)

[Macintosh-specific problems](#)

Connection problems

The computer does not have a Bluetooth connection.

If your computer does not have built-in Bluetooth support, you will need to install a USB-to-Bluetooth adapter in order to add wireless connectivity to your computer. The adapter must support Bluetooth Specification v1.1 with Human Interface Device (HID) profile. Wacom suggests the use of adapters supporting Bluetooth Specification v1.2 for improved performance.

After pressing the power button, the power indicator light glows steadily for two to five seconds and then switches off.

The tablet was previously paired to a computer but could not connect to that computer. Check the following:

If the tablet was previously paired to a computer and you now want to use it on a different computer, you must first pair it with that new computer. See [establishing a Bluetooth connection](#).

If the tablet was previously working on your computer but works no longer, check the configuration of your Bluetooth connection:

- If you are using a USB-to-Bluetooth adapter, make sure it is plugged in and working. If you are using a computer with a built-in Bluetooth module, make sure it is enabled and working.
- Test your computer's Bluetooth support with a Bluetooth mouse or keyboard.
- Open the Bluetooth control panel and make sure the tablet was not disconnected.
- Move the tablet closer to the antenna and make sure there are no metal or other high density obstructions in the line of sight between the tablet and Bluetooth antenna.
- Repeat the process of pairing your tablet to the computer. See [establishing a Bluetooth connection](#).



After pressing the power button, the power indicator light blinks rapidly.

The tablet has not been paired to a computer, or the connection has been broken either by pressing the tablet's CONNECT button or by deleting the pairing from the Bluetooth control panel. Pair the tablet to your computer as described in [establishing a Bluetooth connection](#).

The power indicator light does not come on after pressing the power button.

Try again. If the light does not come on after repeated attempts, your battery charge may be too low.

Plug in the AC power adapter and try again. If the charging indicator does not light the battery may be defective.

When pairing the tablet, the tablet does not appear in the list of available devices to pair.

- The tablet should appear in the pairing list with a mouse icon named WACOM PEN TABLET.
- If the power indicator light is not blinking, press the CONNECT button on the back of the tablet to make the tablet discoverable. The tablet will be in discoverable mode for three (3) minutes and the power indicator light will blink twice per second.
- Verify that your Bluetooth configuration supports Bluetooth Specification v1.1 with Human Interface Device (HID) profile.
- Make sure the tablet is not too far away from the antenna, and that there are no metal obstructions between the Bluetooth antenna and the tablet.

A "pairing unsuccessful" message is displayed when attempting to link the tablet to the computer.

Check for possible interference from other wireless devices, such as from a cordless telephone or microwave oven. If you suspect interference, turn off the interfering device or move it farther away from your computer.

Try again linking the wireless tablet to the computer.

Pairing was successful, but the wireless tablet does not seem to work correctly.

Be sure that you have correctly installed the Wacom Pen Tablet driver software.

See also [optimizing the Bluetooth connection](#).

The tablet works fine when the power adapter is connected, but switches off as soon as the adapter is disconnected.

- Open the battery compartment and make sure the battery is properly connected.
- Check the battery appearance to ensure there is no leakage or other indication of damage.
- Charge the battery overnight and try again. If the problem persists, the battery may be defective and can no longer hold a charge. You will have to purchase a replacement battery from Wacom. See [ordering parts and accessories](#).



After switching on the tablet, the power indicator light remains on but the screen cursor cannot be moved with the pen or cordless mouse.

- Review [using the cordless pen](#) and [using the cordless mouse](#) to be sure you are using the input tools correctly.
- Switch the tablet power off, then back on.
- If your battery charge is low, plug in the power adapter.
- Try resetting the tablet by simultaneously pressing both ExpressKeys and the power button for about five seconds. Then turn off the tablet and switch it back on. Check the pen and mouse operation.
- Reset the tablet by disconnecting both the battery and the AC power connector for at least 10 seconds. Then reconnect the tablet battery and try again.

General problems

The charging indicator does not light when the power adapter is plugged in.

Check that the power adapter is properly plugged into the tablet, and that the AC power cord is plugged into the power adapter and an active power outlet.

The battery may need replacement. See [replacing the tablet battery](#).

While using the tablet, the tablet power indicator light flashes once per second.

The battery is nearly empty. Plug in the power adapter to continue working, or power down the tablet.

The pen works only in MOUSE MODE, and does not draw with pressure-sensitivity.

The tablet driver software was not installed or did not load properly. Make sure the tablet driver software is installed and functioning. Insert the Wacom Pen Tablet Driver CD into your computer and install the driver software for the tablet.

Some applications, including Photoshop 7.0 and greater, require that you turn on the pressure capabilities before the pen will respond as a pressure-sensitive tool.

Clicking is difficult.

Try using a lighter Tip Feel (see [adjusting tip feel, eraser feel, and double-click](#)).



<p>Double-clicking is difficult.</p>	<p>Be sure you are quickly tapping the tablet twice in the same place on the tablet active area.</p> <p>Using the side switch to double-click is recommended (review the techniques in clicking).</p> <p>Set one of the tablet ExpressKeys to DOUBLE CLICK and use it to issue double-clicks.</p> <p>See adjusting tip feel, eraser feel, and double-click:</p> <ul style="list-style-type: none"> • Try increasing the DOUBLE-CLICK DISTANCE. • Try using a lighter TIP FEEL. <p>Windows: Try setting your system to launch programs with a single click. See clicking.</p>
<p>The pen selects everything, will not stop drawing.</p>	<p>Open the Pen Tablet control panel and go to the PEN tab. Move the TIP FEEL slider toward FIRM. If this does not help, see testing your tablet.</p>
<p>The eraser selects everything or will not stop erasing.</p>	<p>Open the Pen Tablet control panel and go to the PEN tab. Move the ERASER FEEL slider toward FIRM. If this does not help, see testing your tablet.</p>
<p>You notice a screen delay at the beginning of pen strokes.</p>	<p>Try decreasing the DOUBLE-CLICK DISTANCE (see adjusting tip feel, eraser feel, and double-click).</p>
<p>You have to press hard with the pen when clicking or drawing.</p>	<p>Open the Pen Tablet control panel and go to the Pen tab. Move the TIP FEEL slider toward SOFT.</p>
<p>The pen tip does not function.</p>	<p>Make sure the power indicator light changes from blue to green when the pen tip is pressed to the tablet surface. If it does not, you may have defective hardware (see testing your tablet).</p>
<p>The side switch does not work.</p>	<p>Be sure you press the side switch when the pen tip is within 5 mm (0.20 inch) of the tablet active area – do this without pressing down on the pen tip.</p> <p>From the Pen Tablet control panel, verify that the side switch is set to the function you are expecting to occur.</p> <p>Make sure the power indicator light changes from blue to green when you press the side switch. If it does not, you may have defective hardware (see testing your tablet).</p>
<p>The screen cursor jumps back.</p>	<p>Do not place the pen or cordless mouse on the tablet when they are not in use, or when you are using another pointing device. Leaving your tool on the tablet may interfere with screen cursor positioning when using other input devices.</p>



Cannot move the cursor where you want to on the screen, or the line you are drawing does not line up with the location of the pointer in paint applications.

Open the Pen Tablet control panel. Verify that PEN MODE is selected. If this does not help, click on the DEFAULT button to reestablish the default tablet to screen mapping. If you are still having difficulty, remove the tablet preferences (see next tip).

You suspect the tablet preferences may be corrupted, or want to make certain that all settings are at their factory defaults.

Delete the tablet preferences as follows:

Windows: Do a Search or Find for the TABLET.DAT file and delete it. The file should be in your Windows\System32 folder. Then restart your computer. When the tablet driver loads it will create a new preferences file with the factory default settings.

Macintosh: For a single user, delete the tablet preferences by first choosing your HOME folder from the GO menu. Then open your home LIBRARY folder. Within your home LIBRARY folder, open the PREFERENCES folder and delete the COM.WACOM.TABLETPREFERENCES file. Log out, then log back in. When the tablet driver loads it will create a new preferences file with the factory defaults.

For multiple users, delete all tablet preferences by first opening the main APPLICATIONS folder. Then open the TABLET folder and run the REMOVETABLET utility. When the utility starts, click on the REMOVE ALL PREFERENCE FILES button. Log out, then log back in. When the tablet driver loads, it will create new preferences files with the factory defaults.

Note: Do not manually remove the WACOM TABLET.PREFPANE file from the main LIBRARY PREFERENCEPANES folder. This file is only to be removed when uninstalling the tablet software driver, and then only when using the REMOVETABLET utility.

The computer does not go to sleep.

When you are not using the pen or cordless mouse, remove them from the tablet surface or the tablet will continue to send data, keeping the computer awake.

When using the tablet the screen cursor is very erratic or jumps around.

On rare occasions the tablet may receive interfering radio frequencies from a computer monitor or nearby AM radio station. If you notice interference from a monitor, try moving the tablet at least six (6) inches away from the monitor, or change the monitor refresh rate or monitor resolution.

If the screen cursor lags or jumps, try [optimizing the Bluetooth connection](#).

When using the tablet, the screen cursor or pen strokes seem to lag or skip in some applications.

See [optimizing the Bluetooth connection](#) for tips on improving the Bluetooth connection.

Windows-specific problems

After changing right- and left-handed settings in the Mouse control panel, the pen tip no longer functions properly and the cordless mouse button functions are reversed.

This will reverse the right and left button settings on your Wacom tools. Restart Windows for your Wacom tool settings to be correctly recognized.

Windows XP. After installing the tablet on a system with multiple users, the tablet only works on the primary user desktop.

Reboot the system after installing the tablet on a system with multiple users.

Macintosh-specific problems

At startup, a dialog box appears telling you that either the driver failed to load or the tablet preferences have not yet been created.

The tablet was not detected at startup.

From the GO menu, select APPLICATIONS and open the UTILITIES folder. Launch the SYSTEM PROFILER and select the DEVICES AND VOLUMES tab. A wireless tablet should be displayed by the profiler. If a tablet was not found, check the Bluetooth wireless connection.

If you are still having problems, open the OS X Disk Utility application and run REPAIR DISK PERMISSIONS from the FIRST AID tab. If this does not help, contact Wacom for Technical Support. See [technical support options](#).

Cannot switch off Graphire Bluetooth after closing the lid on an Apple laptop computer.

Switch off the tablet before closing the lid on your Apple laptop.

Do not worry. The tablet will automatically switch off five (5) minutes after you close the lid on your Apple laptop.

Alternatively, if you prevent Bluetooth devices from waking your computer, the tablet will immediately switch off when your computer goes to sleep or when you close the lid of your Apple laptop. To prevent Bluetooth devices from waking your computer:

1. From the Apple menu, choose SYSTEM PREFERENCES....
2. Click on the BLUETOOTH icon, located in the HARDWARE section of the System Preferences pane.
3. In the BLUETOOTH control panel, select the SETTINGS tab.
4. Make sure that the ALLOW BLUETOOTH DEVICES TO WAKE THIS COMPUTER option is not checked.
5. Quit System Preferences.



Inkwell does not work correctly with the tablet.

There may be a problem with the Inkwell preferences. Remove the damaged preference files as follows. They will be recreated when you enable handwriting recognition.

1. From the Apple menu, choose SYSTEM PREFERENCES, SHOW ALL, and INK. Then turn off handwriting recognition.
2. From the GO menu, choose your HOME. Open the LIBRARY and PREFERENCES folders. Then remove the following preferences:
 - com.apple.ink.framework.plist
 - com.apple.ink.inkpad.plist
 - com.apple.ink.inkpad.sketch
3. Go back to SYSTEM PREFERENCES and INK, and then enable handwriting recognition.
4. Test the Inkwell function using your Wacom tablet and pen.
5. If this procedure does not resolve your problem with Inkwell, contact Apple Support for further assistance. Wacom is not the software manufacturer for Inkwell and we are limited in our abilities to support a third party software application.

Technical support options

If you have a problem with your Wacom tablet, first check the tablet installation guide to be sure the unit is installed correctly. Then review the [troubleshooting](#) procedures within this manual; your problem may be described there and you can try the solution(s) offered.

If you cannot find the answer in this manual, you may find updated information about your problem in the Read Me file for your platform (located on the Wacom Pen Tablet Driver CD). You can also check the product FAQs (Frequently Asked Questions) on the Wacom web site for your region.

If you cannot solve the problem and you think your Wacom tablet is not working properly, contact the Wacom support staff for the area where your product was purchased. See the Wacom tablet Read Me file, located on the Wacom Pen Tablet Driver CD, for contact information. If you have an Internet connection you can download the latest software drivers from the Wacom web site for your region. See [obtaining driver downloads](#) for your region.

When you call, you should be at your computer with the following information available:

- This manual.
- Tablet serial and model number. (Look on the bottom of the tablet.)
- Driver version number. (See the Wacom Pen Tablet Driver CD or the Pen Tablet control panel.)
- The make and model of your computer, and operating system version number.
- A list of peripheral devices attached to your computer.
- The software application and version you were using when the problem occurred.
- The exact wording of any error message that appeared on your screen.
- What happened and what you were doing when the problem occurred.
- How you tried to solve the problem.

Obtaining driver downloads

Wacom periodically updates the tablet software driver to maintain compatibility with new products, and recommends that you regularly update the driver for best functionality. A new Wacom tablet software driver (when available) can be downloaded from the Internet.

USA, Canada, Central and South America

Worldwide Web:	http://www.wacom.com/productsupport	Software updates.
Anonymous FTP Site:	ftp://ftp.wacom.com/pub/drivers	Software updates.

Europe, Middle East and Africa

Worldwide Web:	http://www.wacom-europe.com	Software updates.
Anonymous FTP Site:	ftp://ftp.wacom-europe.com/pub/	Software updates.

Japan

Worldwide Web:	http://tablet.wacom.co.jp	Software updates. (Japanese)
----------------	---	------------------------------

Asia Pacific (English)

Worldwide Web:	http://www.wacom.com/ap	Software updates. (English)
----------------	---	-----------------------------

China

Worldwide Web:	http://www.wacom.com.cn	Software updates. (Simplified Chinese)
----------------	---	---

APPENDIX

This section contains information and tips on tablet installation, caring for your tablet and tools, a how-to on uninstalling the tablet software, your license and warranty, and more.

[Tablet installation](#)

[Caring for your tablet and tools](#)

[Battery life information](#)

[Replacing the tablet battery](#)

[Uninstalling the tablet software](#)

[Product specifications](#)

[Product information](#)

[Ordering parts and accessories](#)

[Radio and television interference](#)

[License and Warranties \(Worldwide, Except for Europe, Africa and Middle East\)](#)

[License and Warranty \(Europe, Africa and Middle East\)](#)

Tablet installation

For detailed instructions, please review the Quick Start Guide that came with your tablet. See also [establishing a Bluetooth connection](#).

Caring for your tablet and tools

Keep your Graphire tools and tablet surface clean. Dust and dirt particles can stick to your tools and cause excessive wear to the tablet surface. Regular cleaning with a soft, damp cloth will help prolong the life of your tablet surface and tools; you can also dampen the cloth using a very mild soap diluted with water. Do *not* use volatile liquids, such as paint thinner or benzene, as they may damage the plastic case.

Keep your tablet and tools in a clean, dry place and avoid extremes in temperature. Room temperature is best. Also, your Graphire tools and tablet are not made to come apart. Twisting the pen case can break the pen. Taking apart the product will void your warranty.

Replacing the pen tip

The pen tip (nib) will wear with normal use. When the nib gets too short or develops a flat point, you can replace it with another nib. Simply clasp the old nib with a tweezer, needle-nosed plier, or similar instrument and pull it straight out of the pen. Then slide the end of the new nib straight into the barrel of the pen – firmly push the nib until it stops.



Important: When the Graphire pen is not in use, place it in the pen storage compartment, the pen stand, or lay it flat on your desk. Leaving the pen on the tablet when not in use can prevent the tablet from switching off and cause the battery to drain down. To maintain the sensitivity of your pen, do not store the pen in a container where it will rest on the tip or eraser.

To order replacement parts, see [ordering parts and accessories](#).

Battery life information

All Li-Poly batteries age over time and typically need to be replaced approximately once every two or three years, whether they are used or not. For information on ordering a replacement battery, see [ordering parts and accessories](#).

Notes:

- When the battery is connected, the tablet will use a small amount of current even when the tablet is switched off. It is a good idea to charge the battery before leaving the tablet unused for a number of days. There is a built-in protection circuit that will prevent the battery from over-discharging. Once a Li-Poly battery has been over-discharged it cannot be recharged.
- If you will not be using your tablet for an extended period of time (a month or longer), Wacom suggests unplugging the battery from the tablet connector in order to conserve the charge and battery life. Store the battery in a cool, dry place.
- Li-Poly batteries are not affected by cycling or other methods used to improve the performance of different battery types.

Replacing the tablet battery

If your tablet battery has exceeded its life span and can no longer be adequately charged, it will need to be replaced. Be sure to use only a rechargeable Lithium Polymer (Li-Poly) battery designed for your tablet. For information on ordering a replacement battery, see [ordering parts and accessories](#).

⚠ Warning: NEVER attempt to charge other battery types in your tablet with the power adapter. If you do so, you may damage the tablet, cause a fire, or personal injury may result.

To replace the tablet battery:

1. First turn the wireless tablet upside down and slide open the battery compartment door.
2. Carefully remove the old tablet battery by disconnecting the cable from the tablet.
3. Align the notch on the new battery cable plug with the cutout in the tablet connector, then press the plug into the connector as shown.



Important: When replacing the tablet battery, be careful not to drop it on hard surfaces. The battery can be damaged internally when dropped, and should be replaced even if there is no obvious damage. This will help prevent any future damage that could occur to the tablet if the battery has been dropped, is installed in the tablet, and then later develops a short or leak while in the tablet.

Properly dispose of the old battery in accordance with the battery manufacturer recommendations, and with the warnings listed below. Keep batteries out of the reach of children, and promptly dispose of old batteries.

Many communities offer voluntary or mandatory recycling programs for batteries – when disposing of batteries, follow all applicable laws and recycle your old batteries whenever possible.

4. Insert the battery into the battery compartment and close the compartment door.

⚠ Warnings:

When installing the battery, do not attempt to install it backwards or reverse the polarity. If you do so, you may damage the tablet, cause a fire, or personal injury may result.

When disposing of the Li-Poly battery, do not carry it loosely in your pocket or in any container that may contain metal objects. If transported improperly and metal objects come in contact with the battery terminals, the battery could short, causing personal injury or fire. It is recommended that you cover the terminals with adhesive tape to insulate them from possible contact with metal objects.

Do not abuse the battery in any manner. Puncturing, crushing, heating, exposure to water or fire, disassembly, shorting the terminals, or other types of abuse may cause the battery to explode or ignite, and potentially cause a fire or personal injury.

If the battery should leak, do not get the fluid in your eye. If battery fluid does enter the eye, do not rub the eye. Immediately rinse the affected eye with water and seek medical attention.

Uninstalling the tablet software

Follow the appropriate procedure below to remove the Wacom tablet driver software from your system.

Important: When you remove the Wacom tablet software from your system, your Wacom tablet will no longer operate with full tablet functionality but will continue to function as a mouse device.

Windows XP: Click START. In the start menu, select CONTROL PANEL. Then select ADD OR REMOVE PROGRAMS. In the ADD OR REMOVE PROGRAMS window, choose PEN TABLET DRIVER and click on the CHANGE OR REMOVE PROGRAMS button. Follow the prompts to remove the tablet driver.

Windows 2000:

1. Click the Windows START button. Then choose SETTINGS and CONTROL PANEL.
2. In the CONTROL PANEL window, double-click on the ADD/REMOVE PROGRAMS icon. In the dialog box that appears, choose the PEN TABLET option.
3. Click on the ADD/REMOVE... button and follow the prompts to remove the tablet driver.

Macintosh:

From the FINDER, choose APPLICATIONS from the GO menu and open the TABLET folder. Double-click on the REMOVE TABLET icon and select the REMOVE TABLET SOFTWARE button. After the removal is completed, click OK.

Note: To fully remove the Graphire Bluetooth pen tablet from your computer, you will need to delete the paired connection from the Bluetooth devices control panel for your operating system.

Product specifications

Graphire Bluetooth pen tablet (model CTE-630BT)

Coordinate resolution	80 lpmm (2032 lpi)
Accuracy, pen	+/- 0.5 mm (0.02 in)
Reading height with pen, average	5 mm (0.20 in)
Maximum report rate	100 points per second
Tablet ExpressKeys stroke	1 mm (0.04 in), approximately
Communication interface	Bluetooth wireless technology
Power requirements	DC 6V, 550 mA, from power adapter
Operating temperature	5 to 40 degrees C (41 to 104 degrees F)
Storage temperature	-10 to +60 degrees C (14 to 140 degrees F)
Operating relative humidity	20% to 80% noncondensing
Storage relative humidity	20% to 90% noncondensing
Certifications and compliance	FCC Class B, CE, VCCI Class B, C-Tick
Active area (W x D)	208.8 x 150.8 mm (8.22 x 5.94 in)
Physical size (W x D x H)	257 x 24.3 x 280 mm (10.13 x 0.96 x 11.03 in)
Weight	0.86 kg (1.9 lb), approximately
Battery	Rechargeable Lithium Polymer (Li-Poly) cell, 3.7V, 1800 mAh
Connectivity	Bluetooth wireless technology using HID protocol.
Power adapter	Input voltage: 100 to 240 VAC, 50/60 Hz, 0.3 VA Output voltage: 6 VDC, 1.0 A

Graphire pen (model EP-130E)

Physical size (L x D)	145 x 12.5 mm (5.71 x 0.49 in)
Pressure levels	512 levels
Pen tip travel	0.1 mm (0.004 in) or less
Eraser tip travel	0.1 mm (0.004 in) or less
Weight	11 g (0.02 lb), approximately
Tip refill type	Polyacetal (Part No. PSI-A007)

Graphire cordless mouse (model EC-130)

Physical size (L x W x H)	115 x 60 x 38 mm (4.53 x 2.36 x 1.50 in), approximately
Weight	90 g (0.20 lb), approximately
Fingerwheel type	Continuous rotation, 24 notches per revolution

Graphire Inking Pen (model EP-200, optional)

Pen tip travel	0.1 mm (0.04 in) or less
Pressure levels	512 levels
Physical size (L x D)	151 x 12.5 mm (5.94 x 0.49 in)
Weight	12 g (0.42 oz), approximately
Tip refill types	Polyacetal (Part No. PSI-A011) Ink refill, black (Part No. PSI-A023)

Note: When you purchase an Inking Pen, it comes with a blank nib in the pen. Use the included nib puller (silver ring) to gently remove the blank nib from the pen. Then insert one of the silver-colored cartridges that come with the Inking Pen. The cartridge tip has a waxy coating that you will need to rub off before you can begin inking. The Inking Pen will not fit into the pen storage compartment or pen stand.

Product information

To learn more about Graphire Bluetooth, and about which software applications are currently tablet enhanced to support the pressure-sensitivity, eraser, and other special functionality of your pen tablet and tools, visit the Wacom web site for your region:

USA, Canada, Central and South America	http://www.wacom.com/productinfo
Europe, Middle East and Africa	http://www.wacom-europe.com
Japan	http://tablet.wacom.co.jp
Asia Pacific (English)	http://www.wacom.com/ap
China (Simplified Chinese)	http://www.wacom.com.cn/chanpin

Ordering parts and accessories

To purchase parts and accessories, refer to the tablet Read Me file and see who to call for your region.

Description	Part numbers
Tablet battery (Li-Poly)	GWL-001
Photo frame (6x8/A5)	PPL-A145
Replacement tips for pen (EP-130E models)	PSI-A007
Pen stand	PST-A031
Pen tether (optional)	FUZ-A107
Power adapter	A10W-0610I
Power cable for use in USA	SM-045 / SM-103
Power cable for use in UK	YP-60 / YC-13
Power cable, for use in Europe, other than UK	SH-037 / SH-103

You can also do the following:

To purchase parts and accessories in the USA or Canada, call 1.888.884.1870 (toll-free) or visit Wacom's web site at <http://www.wacomdirect.com> (USA only).

To purchase parts and accessories in Europe, call +49 (0)180.500.03.75 or send an email to parts@wacom-europe.com. Or, visit the Wacom web site at www.wacom-europe.com/solutionstore. You can also contact your local dealer, distributor, or Technical Support using the appropriate number for your region.

To purchase parts and accessories in other countries, please contact your local dealer or distributor.

Radio and television interference

The equipment described in this manual generates, uses, and can radiate radio-frequency energy. If it is not installed and used properly—that is, in strict accordance with Wacom instructions—it may cause interference with radio and television reception.

FCC notice

This device complies with Part 15 of the FCC Rules. Operation is subject to the following two conditions: (1) this device may not cause harmful interference, and (2) this device must accept any interference received, including interference that may cause undesired operation.

This equipment has been tested and found to comply with the limits for a Class B digital device, pursuant to Part 15 of FCC Rules. These limits are designed to provide reasonable protection against harmful interference in a residential installation.

This equipment generates, uses and can radiate radio frequency energy and, if not installed and used in accordance with the instructions, may cause harmful interference to radio communications. However, there is no guarantee that interference will not occur in a particular installation.

You can determine whether the equipment is causing interference by disconnecting it from your computer. If the interference stops, it was probably caused by the equipment.

If the equipment does cause interference to radio or television reception, you may be able to correct the interference by using one or more of the following measures:

- Rotate the television or radio antenna until the interference stops.
- Move the equipment farther away from the television or radio.
- Plug the equipment and computer into an outlet that is on a different circuit from the television or radio.

If necessary, consult your Wacom dealer or an experienced radio/television technician for help.

Changes or modifications to this product not authorized by Wacom could void the FCC Certification and negate your authority to operate the product.

CE declaration

The Wacom Graphire[®] Bluetooth[®] wireless technology digitizing tablet, model CTE-630BT, has been tested and found to comply to the following harmonized European Norms:

- EN 55024 (electromagnetic immunity)
- EN 55022 Class B (electromagnetic emissions)
- EN 60950 (electrical safety)
- EN 300328 (radio and telecommunications terminal equipment)
- EN 301489 (electromagnetic compatibility and radio spectrum matters)

Based on the results of these tests, Wacom declares that the above mentioned devices conform to Article 10.1 of the European Council Directive 89/336/EEC, and their amendment Directive 93/68/EEC, and to the Directive 1999/5/EC and indicates this conformity by the CE-sign on each device.

The device must be installed and operated always in strict accordance to the instructions given in this handbook. Any changes or modifications to this product that were not specifically authorized will invalidate this declaration.

License and Warranties

(Worldwide, Except for Europe, Africa and Middle East)

Software License

This legal document is an agreement between you, the end-user, and Wacom Technology Corporation (Wacom).

1. Grant of License. The enclosed product includes computer programs embedded in firmware and accompanying diskette or CD-ROM (the "Software"). The Software is licensed, not sold, to you for use only with Wacom products upon the terms of this license, and Wacom reserves any rights not expressly granted to you. Wacom grants to you a non-exclusive right to use this copy of the Software in conjunction with a Wacom product at a single location.

2. Ownership of Software. Although you may own the product in which the Software is originally recorded, Wacom retains ownership of the Software itself. You acknowledge that the Software is Wacom's property, and contains valuable confidential, unpublished information developed or acquired by Wacom at great expense, including data processing algorithms, innovations and concepts. The Software is protected by copyright and other federal and state laws. You agree to use your reasonable best efforts to protect the Software from unauthorized reproduction, distribution, disclosure, use, or publication.

3. Copy Restrictions. Unauthorized copying of the Software is expressly forbidden.

4. Use Restrictions. You may not decompile, reverse assemble, disassemble or reverse engineer the Software.

5. Termination. This License is effective until terminated. This License will terminate automatically without notice from Wacom if you fail to comply with any provisions of the License.

6. Miscellaneous. This License is governed by the laws of the United States of America and the state of Washington except in Asia Pacific and by the laws of Japan for Asia Pacific.

Limited Warranty (U.S.A. and Canada)

Wacom warrants the product, to the original consumer purchaser, except for the Software and consumable items such as the battery and pen nibs, to be free from defects in materials and workmanship under normal use and service for a period of one (1) year, from the date of original retail purchase, as evidenced by a copy of the receipt and registration with Wacom by mail or online within 30 days of purchase.

The Software is licensed "as is." Wacom makes no warranty with respect to its quality or performance. Wacom cannot guarantee you uninterrupted service or the correction of any errors.

Upon discovery of a defect in the product, except in the Software, within the Warranty Period, you should contact Wacom Technical Support via telephone, email, or fax to obtain an RMA (Return Merchandise Authorization) number and instructions for shipping the product to a service location designated by Wacom. You should send the product, shipping charges prepaid, to the designated service location, accompanied by the return authorization number, your name, address and telephone number, proof of purchase date, and a description of the defect. Wacom will pay for return shipping by United Parcel Service or by an equivalent service as chosen by Wacom.



Wacom's sole obligation and entire liability under this warranty shall be, at Wacom's option, either the repair or replacement of the defective product or parts thereof of which Wacom is notified during the Warranty Period; provided, however, that you are responsible for (i) the cost of transportation of the product to the designated service location and (ii) any loss or damage to the product resulting from such transportation.

Wacom shall have no responsibility to repair or replace the product if the failure of the product has resulted from accident, abuse, misuse, negligence, or unauthorized modification or repair, or if it has been handled or stored other than in accordance with Wacom's storage instructions.

Any descriptions, drawings, specifications, samples, models, bulletins, or similar material, used in connection with the sale of the product, shall not be construed as an express warranty that the product will conform or comply with your requirements.

EXCEPT FOR THE LIMITED WARRANTY DESCRIBED ABOVE, THERE ARE NO OTHER WARRANTIES MADE BY WACOM ON THIS PRODUCT. NO ORAL OR WRITTEN INFORMATION OR ADVICE GIVEN BY WACOM, ITS DEALERS, DISTRIBUTORS, AGENTS, OR EMPLOYEES SHALL CREATE A WARRANTY OR IN ANY WAY INCREASE THE SCOPE OF THIS WARRANTY, AND YOU MAY NOT RELY ON ANY SUCH INFORMATION OR ADVICE. THIS WARRANTY GIVES YOU SPECIFIC LEGAL RIGHTS, AND YOU MAY ALSO HAVE OTHER RIGHTS WHICH VARY FROM STATE TO STATE.

WACOM LIMITS THE DURATION OF ANY LEGALLY IMPLIED WARRANTIES INCLUDING IMPLIED WARRANTIES OF MERCHANTABILITY OR FITNESS FOR A PARTICULAR PURPOSE, TO THE DURATION OF WACOM'S EXPRESS WARRANTY. SOME STATES DO NOT ALLOW LIMITATIONS ON HOW LONG AN IMPLIED WARRANTY LASTS, SO THE ABOVE LIMITATION MAY NOT APPLY TO YOU.

NEITHER WACOM NOR ANYONE ELSE WHO HAS BEEN INVOLVED IN THE CREATION, PRODUCTION, OR DELIVERY OF THIS PRODUCT SHALL BE LIABLE FOR ANY DIRECT, CONSEQUENTIAL, OR INCIDENTAL DAMAGES (INCLUDING DAMAGES FOR LOSS OF BUSINESS PROFITS, BUSINESS INTERRUPTION, LOSS OF BUSINESS INFORMATION AND THE LIKE) ARISING OUT OF THE USE OF OR INABILITY TO USE SUCH PRODUCT, EVEN IF WACOM HAS BEEN ADVISED OF THE POSSIBILITY OF SUCH DAMAGES. SOME STATES DO NOT ALLOW THE EXCLUSION OR LIMITATION OF INCIDENTAL OR CONSEQUENTIAL DAMAGES, SO THE ABOVE LIMITATION OR EXCLUSION MAY NOT APPLY TO YOU.

In the event that any of the above limitations are held unenforceable, Wacom's liability for any damages to you or any party shall not exceed the purchase price you paid, regardless of the form of any claim.

This Limited Warranty is governed by the laws of the United States of America and the state of Washington.

This Limited Warranty is valid for and only applies to products purchased and used inside the United States (and its territories or possessions) and Canada.

Warranty Service in the U.S.A. and Canada

To obtain Warranty service within the U.S. or Canada contact:

Wacom Technical Support
Phone: 1.360.896.9833
Fax: 1.360.896.9724
E-mail: support@wacom.com

Warranty on Sales Outside of the U.S.A. and Canada

For products purchased or used outside of the United States and Canada, upon discovery of a defect in the product, except in the Software, within the Warranty Period you should contact your local dealer or distributor. In all other respects the terms of the warranty as set forth above apply to such sales.

Should you have any questions about this Agreement, or if you desire to contact Wacom for any reason, please contact in writing:

In North and South America contact:

Wacom Technology Corporation
1311 S.E. Cardinal Court
Vancouver, Washington 98683
U.S.A.

In Japan contact:

WACOM Co., Ltd.
2-510-1 Toyonodai
Otone-Machi, Kitasaitama-Gun
Saitama, 349-11
Japan

In Asia Pacific contact:

WACOM Co., Ltd.
Harmony Tower 18F, 1-32-2 Hon-Cho,
Nakano-Ku, Tokyo 164-0012
Japan

In Mainland China (Except Hong Kong) contact:

WACOM China Corporation
Room 611 CNT MANHATTAN BUILDING
No. 6, Chaoyangmen Bei Road. Beijing, China 100027
E-mail: support@wacom.com.cn

License and Warranty (Europe, Africa and Middle East)

Software License Agreement

Important Notice to Customers

This product contains copyrighted computer programs (“software”) which are the inalienable intellectual property of WACOM Europe GmbH (“WACOM”). This software is both integrated within the product and also contained on the accompanying data carrier. The purchase of this product from your dealer does not include WACOM's software and the associated rights of usage. WACOM grants you, the user, the right to use the software solely in accordance with the conditions of this software license agreement. By purchasing this product you agree to the terms of this license.

Entitlement to Use the Software

WACOM grants the customer a personal, non-exclusive license to use the software solely in combination with this product and for the proper operation of this product. This license may be transferred only in connection with this product.

The use of this software includes solely the permanent or temporary, complete or partial copying of the software by means of loading, displaying, executing, transmitting or saving for the purpose of executing the commands and data it contains or of observing, examining or testing the functions of the software.

The customer may not license, lease or loan the software to a third party, nor allow a third party to access the software in any other way. The customer may not without prior written authorization from WACOM copy, modify, transmit or edit the software, apart from the actions of copying necessary to create a backup copy and for the purposes outlined in section 2 above.

The customer may not decompile the software; if the software contains interfaces to software which is not supplied by WACOM, WACOM shall make the necessary information available to the customer upon request, provided that the customer can prove his/her entitlement to use the software and that he/she agrees to pay the copying and postage costs.

Limited Warranty

WACOM warrants to you as the original end-user that the product hardware is free from defects in materials and workmanship under normal use and service for a period of TWO (2) YEARS after the date of purchase, provided that they are unused at the time of such purchase. WACOM further warrants to you the accompanying diskettes against defects in materials and workmanship for a period of SIX (6) MONTHS after the date of purchase.

The Software is licensed and distributed “AS IS”. WACOM makes no warranties, expressed or implied, with respect to its quality, performance, merchantability and fitness for a particular purpose (including related manuals and documentation). WACOM cannot guarantee you uninterrupted service or the correction of any errors.

Upon discovery of a defect in the product, except in the Software, within the applicable Warranty Period, you should return them in the original packaging to the place of your original purchase, together with your name, address, telephone number, a description of the problem and a copy of the original invoice. You are responsible for any loss or damage to the product resulting from such transportation. WACOM's sole obligation and entire liability under this warranty shall be, at WACOM's option, either the repair or the replacement of product or parts thereof that prove defective and that were returned within the applicable Warranty Period.



WACOM shall have no responsibility to repair or replace the product if (a), in the opinion of WACOM, the failure of the product has resulted from accident, abuse, misuse, negligence, misapplication, or unauthorized modification or repair, or (b) the product has been handled or stored other than in accordance with WACOM's storage instructions, or (c) the failure is due to normal wear and tear, or (d) you fail to fulfill your obligations as described above.

In case that any claim presented under warranty is found upon investigation to be either outside the duration or the scope of this warranty, or in case that the product is found to be not defective, then the cost of such investigation and repair shall be borne by you.

Any descriptions, drawings, specifications, samples, models, bulletins, or similar material, used in connection with the sale of the product, shall not be construed as an express warranty that the product will conform or comply with your requirements.

Should any provision of this agreement be declared invalid, that provision shall be treated as separate from the agreement, and the agreement shall remain in force without limitation in all other respects.

If this product is found to be defective, the purchaser may be entitled to institute legal proceedings against the seller on grounds of liability for deficiency. The statutory rights indicated with regard to the seller are not limited in any way by this warranty. Rather, this warranty affords the purchaser rights in addition to those indicated in the present text.

This limited warranty shall apply if the seller's corporate domicile is in the European Union or in Iceland, Norway, Jersey, Switzerland, Russia, the Ukraine, Rumania, Bulgaria, Croatia, Serbia, Tunisia, Turkey, Syria, the Lebanon, Jordan, Israel, Egypt, the United Arab Emirates, Iran or South Africa.

This Limited Warranty and Liability is governed by the laws of the Federal Republic of Germany.

Should you have any questions about this Agreement, or if you desire to contact WACOM for any reason, please contact in writing:

WACOM Europe GmbH
Europark Fichtenhain A9
47807 Krefeld
GERMANY

GLOSSARY

Active area. The drawing area of the tablet where your Graphire tools are detected.

Aspect. The ratio between the vertical and horizontal dimension of the tablet or display.

Bluetooth. A standardized wireless technology and Specification. Manufacturers build this into their products in order to create Bluetooth devices, enabling seamless voice and data connections between a variety of wireless devices operating at short range to one another.

Click force. The amount of force you must apply to the tip of your pen for a click to occur.

Discoverable mode. An operational state in which a Bluetooth device is available for discovery by another Bluetooth device.

Double-click distance. The maximum distance (in screen pixels) that the cursor can move between clicks and still be accepted as a double-click. Increasing the double-click distance makes double-clicking easier, but may cause a delay in brush strokes in some graphics applications.

Eraser-aware application. A software application that has built-in support for the Graphire eraser. These applications take advantage of the eraser in different ways, depending on what makes sense for the application.

ExpressKeys. The customizable control keys located on your wireless tablet.

Fingerwheel. The control wheel on the cordless mouse.

Mapping. The relationship between your Graphire tool position on the tablet and the cursor position on the monitor screen.

Modifier. Modifier keys include SHIFT, ALT, and CTRL for Windows, or SHIFT, CONTROL, COMMAND, and OPTION for Macintosh. You can customize your Graphire tool to simulate a modifier key.

Mouse acceleration. A setting that allows you to adjust the screen cursor acceleration when your Graphire tool is in [mouse mode](#).

Mouse mode. A method for positioning the screen cursor. When you place a Graphire tool on the tablet, you can move the screen cursor with a “pick up and slide” motion similar to using a traditional mouse. This is known as relative positioning, and is the default setting for the cordless mouse. See also [pen mode](#).

Mouse speed. A setting that allows you to adjust the speed at which your screen cursor moves when your Graphire tool is in [mouse mode](#).

Nib. The replaceable pen tip.

Pairing. A method of creating a virtual cable link between two Bluetooth devices.



Pen mode. A method of positioning the screen cursor. Wherever you place your Graphire tool on the tablet, the screen cursor will jump to the same corresponding point on the screen. This is known as absolute positioning, and is the default setting for the Graphire pen. Also, PEN MODE allows you to quickly position the screen cursor without having to first find it and then move it across the desktop. See also [mouse mode](#).

Pixel. The smallest unit of measure on your monitor screen.

Pop-up Menu. A window that displays a list of keystroke functions and other actions you can perform. You can customize the buttons of your Graphire tools to display this menu.

Pressure sensitive. A quality of the Graphire pen tip and eraser that senses the amount of pressure being applied. This is used to create natural-looking pen, brush, and eraser strokes in applications that are pressure-sensitive.

Pressure-sensitive application. Any application that supports pressure-sensitive input.

Proximity. The height above the tablet [active area](#) where the Graphire tools are detected. Refer also to the [pointing](#) section.

Screen cursor. The pointer on the display screen. Screen cursors come in different shapes (such as an I-beam, arrow, or box), depending on which application you are running.

Transceiver. A radio device capable of both transmitting and receiving information.

USB. Universal Serial Bus. A hardware interface standard for connecting computer peripheral devices. USB ports support hot-plugging, which allows you to connect or disconnect a USB device without turning off your computer.

Wintab. An interface standard used by Windows applications for receiving tablet information. Graphire supports all Wintab-compatible applications under Windows.

INDEX

About the manual	4	Driver downloads, obtaining	53
Accessories and parts, ordering	60	Environmental conditions	55
Battery		Eraser feel, customizing	30
charging	10	Erasing, with pen	22
installing	9	ExpressKeys, using	25
replacing	56	Eye-hand coordination exercise	22
Battery life, information	55	FCC notice	61
Bluetooth connection, optimizing	16	Features	
Button functions	32	input tools	8
Care, for tablet and tools	55	tablet	7
CE declaration	61	Functions, button	32
Click sound	20	General problems, troubleshooting	48
Clicking, with pen	20	Graphire, working with	6
Connection		Holding the pen	18
establishing	13	Information, product	60
problems, troubleshooting	46	Installing tablet	54
Control panel		Interference, radio and television	61
opening	27	Linking, to computer	13
overview	28	Macintosh-specific problems, troubleshooting	51
settings	28	Manual, about	4
Cordless mouse		Mapping, to multiple monitors	37
buttons, customizing	35	Mouse Mode, settings	35
customizing	34	Mouse Speed, setting	40
fingerwheel, customizing	35	Nib, replacing	55
using	23	Ordering parts and accessories	60
Customizing		Overview, control panel	28
cordless mouse	34	Parts and accessories, ordering	60
buttons	35	Pen	
fingerwheel	35	clicking with	20
double-click	30	customizing	29
eraser feel	30	double-clicking with	20
mouse		dragging with	20
acceleration	40	drawing with pressure	21
speed	40	erasing with	22
pen	29	holding	18
side switch	31	pointing	19
tip feel	30	replacing the tip	55
Double-click, customizing	30	using	18
Double-clicking, how to	20	using side switch	21
Dragging, with pen	20	Pointing, with pen	19
Drawing with pressure	21	Power indicator light	12



Pressure, drawing with	21	power indicator light	12
Product information	60	power saving features	12
Properties, tablet	41	replacing battery	56
Proportions and scale	38	scale and proportions	38
Radio and television interference	61	storing	55
Scale and proportions	38	testing	44
Settings, control panel	28	tracking	36
Side switch		working with	24
customizing	31	Tablet, working with properties	41
using	21	Technical Support options	52
Software		Testing	
driver downloads	53	tablet	44
uninstalling	57	tools	45
Specifications		Tip feel, customizing	30
Graphire Bluetooth pen tablet	58	Tip, replacing	55
Graphire cordless mouse	59	Tools, testing	45
Graphire pen	59	Tracking, tablet	36
Inking pen	59	Troubleshooting	43
product	58	connection problems	46
Tablet		general problems	48
battery and power management	9	Macintosh-specific problems	51
battery charging	10	tables	46
battery installation	9	Windows-specific problems	51
changing the underlay	26	Underlay	
connecting to your computer	13	changing	26
creating a new underlay	26	creating new	26
ExpressKeys	25	Uninstalling tablet software	57
features	7	Windows-specific problems, troubleshooting	51
installation	54	Wireless connection	13
mapping		Work area, setting up	17
area	38	Working with Graphire	6
for portion of screen area	39		
for portion of tablet area	40		
to multiple monitors	37		

Wacom international offices

Wacom Technology Corporation

1311 S.E. Cardinal Court
Vancouver, WA 98683
U.S.A.
Telephone
General: +1.360.896.9833
Fax: +1.360.896.9724

WACOM Co., Ltd.

2-510-1 Toyonodai
Otone-Machi, Kitasaitama-Gun
Saitama, 349-1148
Japan
Internet: <http://tablet.wacom.co.jp>

WACOM China Corporation

Room 611 CNT MANHATTAN BUILDING
No. 6, Chaoyangmen Bei Road. Beijing, China 100027

Telephone
General: +86.(0)10.8528.2819
Fax: +86(0)10.8528.2386

WACOM Europe GmbH

Europark Fichtenhain A9
47807 Krefeld
Germany
Telephone
General: +49.(0)2151.3614.0
Fax: +49.(0)2151.3614.111

WACOM Co., Ltd.

Asia Pacific Office
Harmony Tower 18F, 1-32-2 Hon Cho,
Nakano-Ku, Tokyo 164-0012
Japan
Telephone
General: +81.3.5309.1513
Fax: 81.3.5309.1514

WACOM Digital Solutions Co., Ltd.

Gangnam Telepia B/D 9th FI, 662-18
Yeoksam-dong, Gangnam-gu, Seoul, 135-080
Korea
Telephone
General: +82.2.557.3984
Fax: +82.2.557.3895