



Trademark Information

BTW is a product of Widcomm Inc.

Windows, Windows 98, Windows NT, Windows Millennium, Windows XP are trademarks of Microsoft Corporation. Internet Explorer is a product of Microsoft Corporation.

The BLUETOOTH trademarks are owned by Bluetooth SIG and used by USI under license.

T39 handset is a product of Ericsson.

All other trade names mentioned in this document or the other documentation provided with Bluetooth USB Dongle are trademarks or registered trademarks of their respective holders.



Table of Contents

Item	Page
System Requirement	3
Bluetooth Software Install step by Step	3 -9
Start Connection Over The Bluetooth Airwaves – File Transfer	10-13
Connecting Over The Bluetooth Airwaves – Security	14 - 15
Start Connection Over The Bluetooth Airwaves – Dial Up Networking Profile	16 - 18

System Requirements

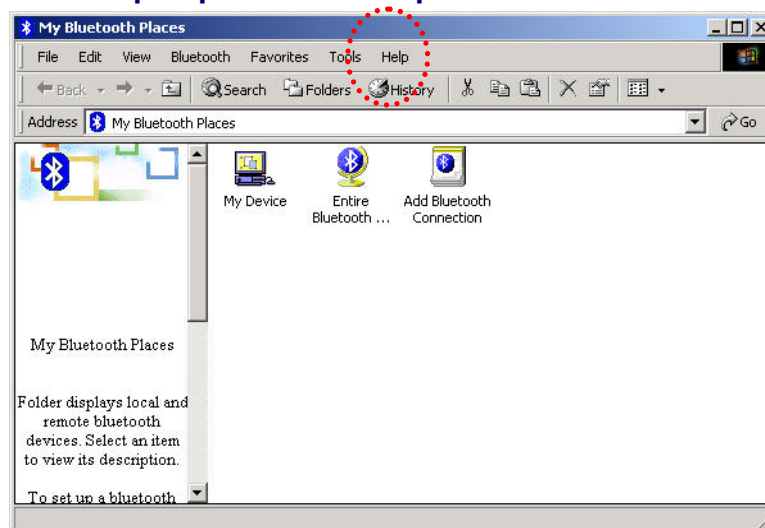
BTW runs under:

- Windows 98 (Second edition)
- Millennium (Windows 98 ME)
- Windows 2000
- Windows XP

During the installation, you need a CD-ROM driver for access to the bundle software.

Note: This Getting Started is a simple guide , for more Users Guide please see the 'BTW Users Guide.pdf' in BTW CD.

Or you can click the Help Topics in the Help Menu of the Tool Bar.



Bluetooth Software Install step by step

Step 1 Insert the Widcomm BTW CD into the PC's CDROM drive. Installation proceeds automatically. Since Windows NT does not support USB, the installation of the CD should be done on systems with Windows '98 or Windows 2000.

Step 2 An InstallShield box appears to inform you the installation Wizard is being set up. Please wait.



Figure 2. Welcome Window

Step 3 A Welcome To The Installation Wizard window appears as shown in Figure 2. Select **Next** to continue the installation process.

Note: These images were captured from a Windows 2000 system. Your images may look slightly different.

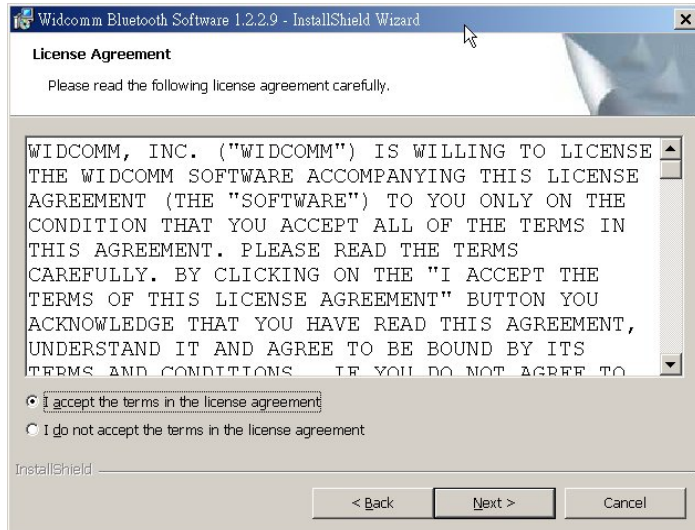


Figure 3. License Agreement Window

Step 4 The license agreement window appears as shown in Figure 3. If you accept, mark the "I accept the terms in the license agreement" option and click on **Next**. The installation will proceed. If you do not accept the conditions of the agreement, the installation process will terminate.

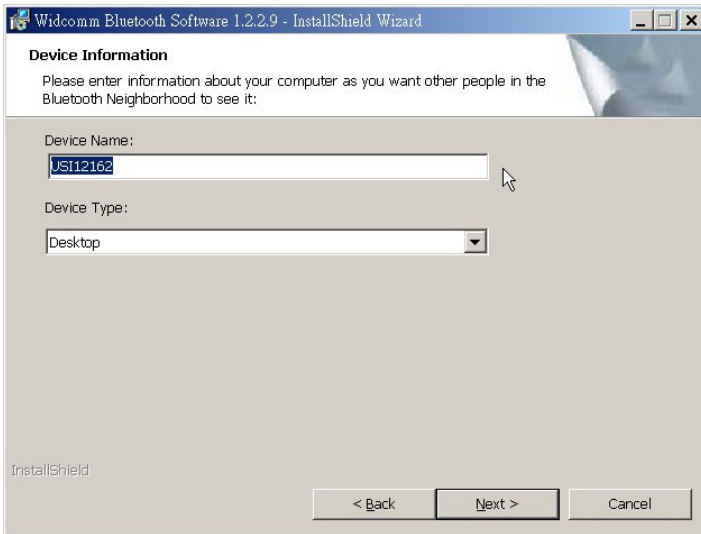


Figure 4. Device Information Window

Step 5 A Device Information window opens as shown in

Figure 4. Enter a device name and choose a device type. These options will not affect the functionality. The device information is used to inform the master device what kinds of other devices are within range to connect to so the user can identify which device is the one they need to connect to if there is more than one device within range. Select the **Next** Button.

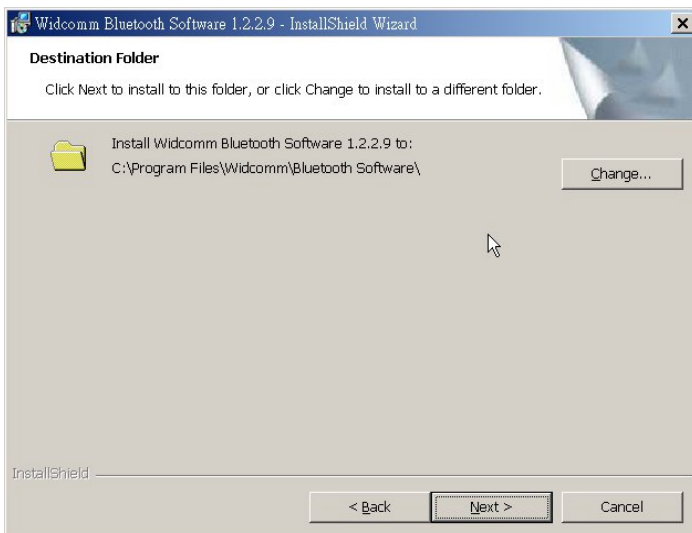


Figure 5. Destination Folder Window

Step 6 A Destination Folder window appears as shown in Figure 5, which states the default location and gives you the opportunity to choose an alternative folder. When the location is acceptable, select **Next**.

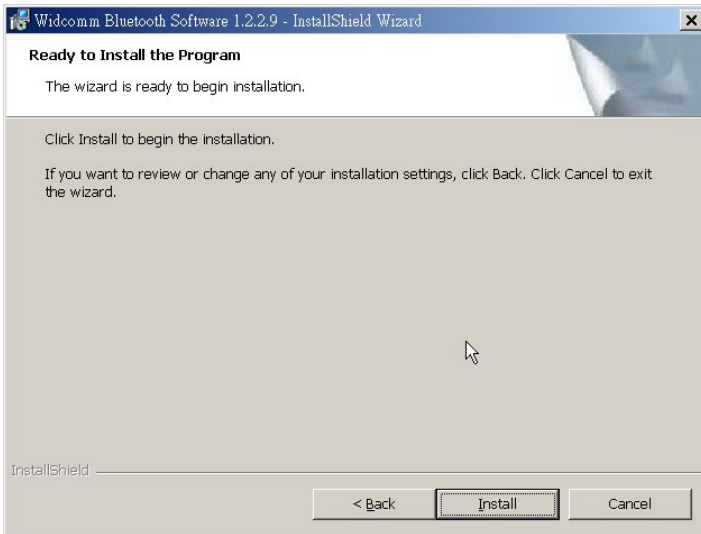


Figure 6. Ready to Install Window

Step 7 A Ready to Install Program window appears as shown in Figure 6. Select **Install** when you are ready to proceed.

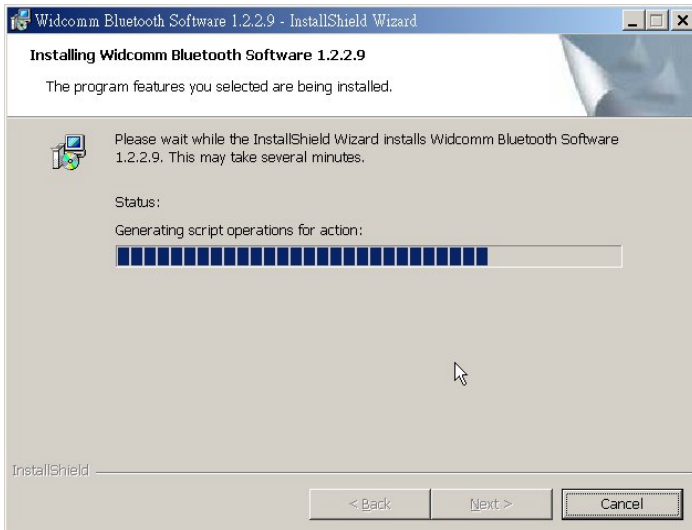
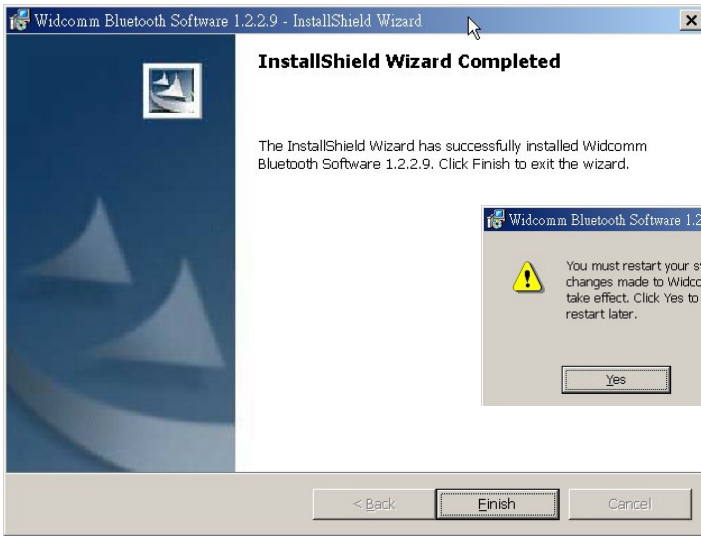


Figure 7. Installing Window

Step 8 An Installing Widcomm Status window appears. Please be patient, this may take up to 5 minutes.

Step 9 A notification window appears asking you to restart your system. Select **Yes** to proceed.



Step 10 You will be informed when the installation is complete. Select **Finish**. Follow the instructions thereafter. You may be asked to restart the computer after the installation completes. In that case click **OK** and restart the computer.

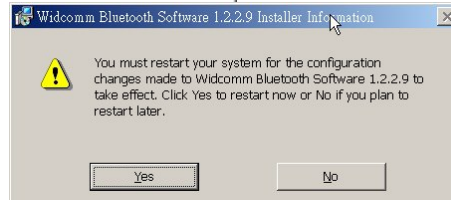
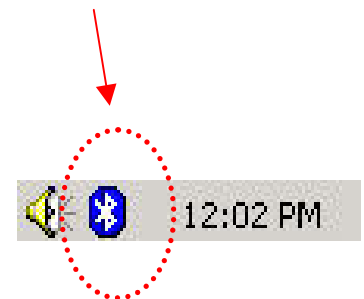


Figure 8. Install Complete Window

Step 11 A Bluetooth Neighborhood logo has appeared on your desktop and a small Bluetooth icon has appeared on your icon tray (lower right-hand side of the screen).



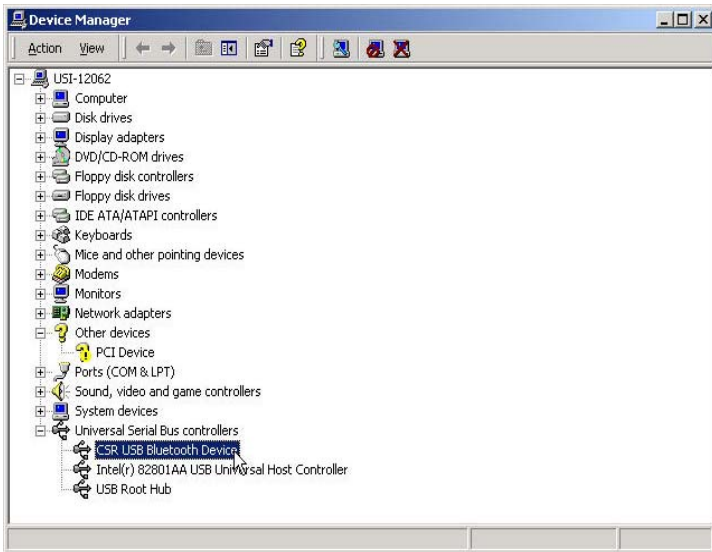


Figure 9. Device Manager Window

Step 12 Plug the Bluetooth USB Dangle into you usb port ,The OS will install the usb Driver auto.
And you can check it in the My computer -> Device Manager.
You may now remove the Widcomm CD from your CD drive.

Step 13 Let's configure your devices. On your icon tray (lower right-hand side of the screen), right click on the small Bluetooth Neighborhood icon on your icon tray.

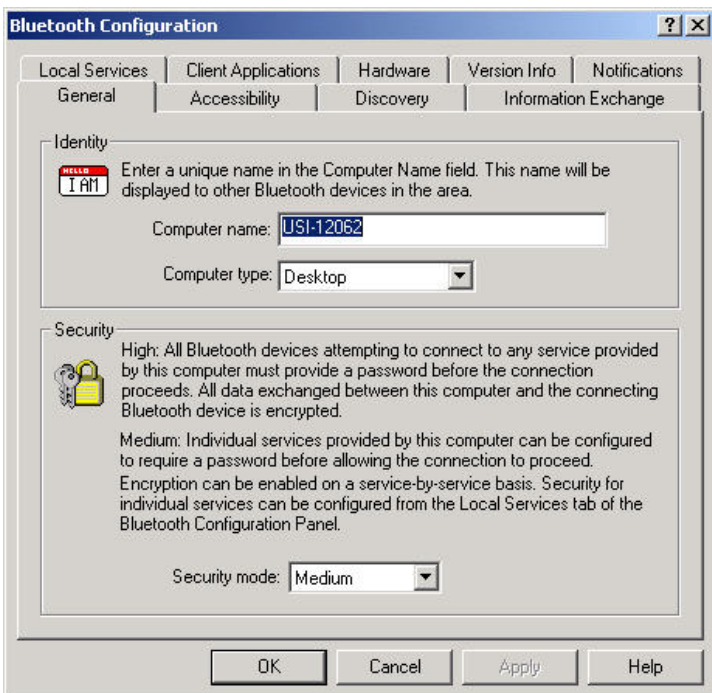
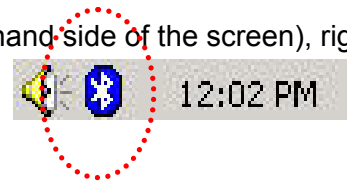
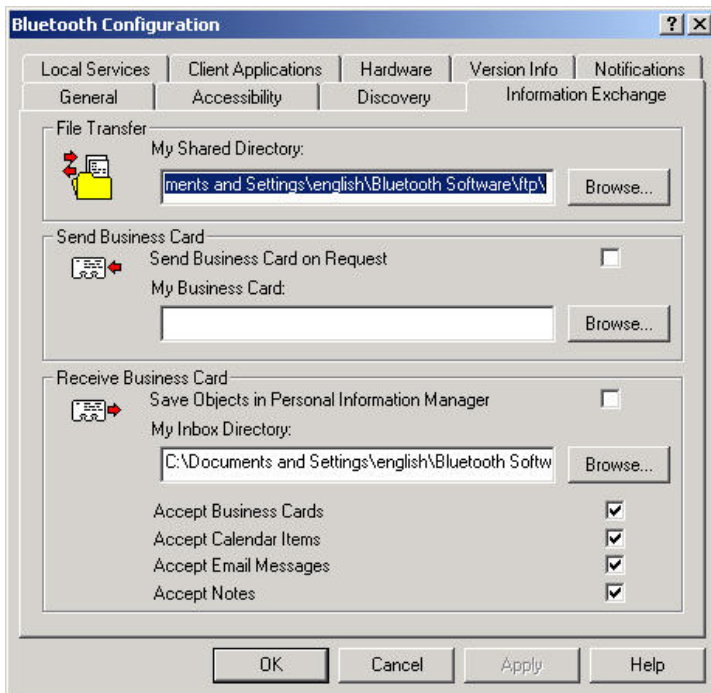


Figure 10. Bluetooth Configuration Window - General Tab

Step 14 A pull down window appears with two words, **Security** (which we will discuss later) and **Configuration**. Choose **Configuration**.

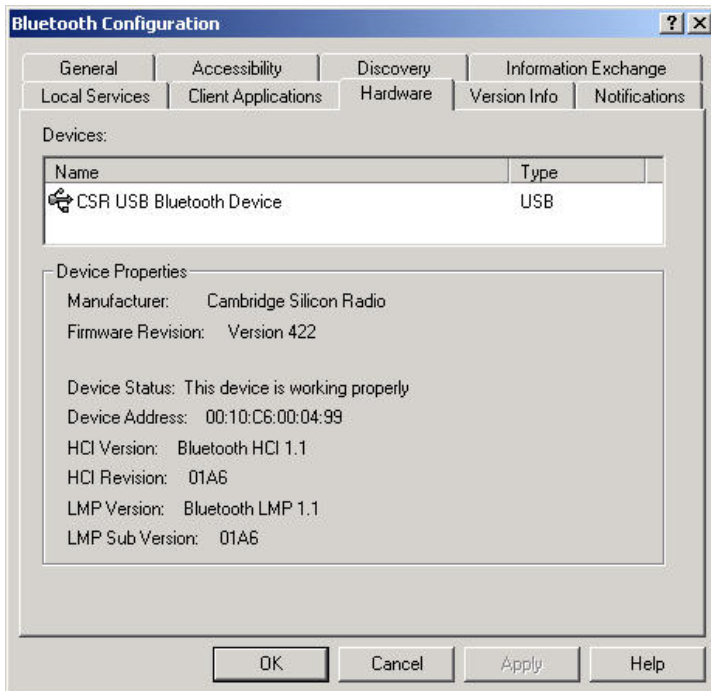
Step 15 A Bluetooth Configuration window appears as shown in Figure 10. In this document, there are three tabs-of-interest: General, Information Exchange, and Hardware. Select the **General** tab.

Step 16 Type in a name for your device and choose either Laptop or Desktop. The security option's default is medium; leave that as it is for now. Select **OK**.



Step 17 Now choose the **Information Exchange** tab as shown in Figure 11. The My Shared Directory window allows you to determine where you would like to locate files you want to share with other devices. The default is called File Transfer. My Inbox Directory is the dialogue window that allows you to determine where you wish to put incoming files. Configure the many choices on this tab now or leave them at the default settings and then select **OK**.

Figure 11. Bluetooth Configuration Window – Information Exchange Tab



Step 18 Now choose the **Hardware** tab. Once you have established a connection, you will see the BD Address and other interesting information about the device.

Figure 12. Bluetooth Configuration Window - Hardware Tab

Start Connecting Over The Bluetooth Airwaves – File Transfer

Step 1 Double click on the Bluetooth Neighborhood icon located on your desktop. A Bluetooth Neighborhood window appears as shown in Figure 13. Double click on the **Entire Bluetooth...** icon. This will perform an inquiry and search for other nearby devices.

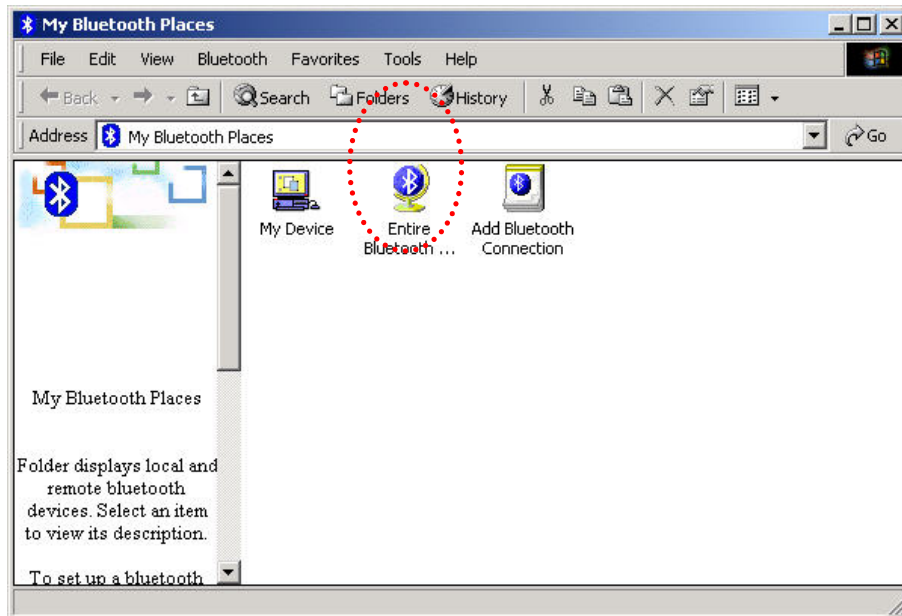


Figure 13. Bluetooth Neighborhood Window

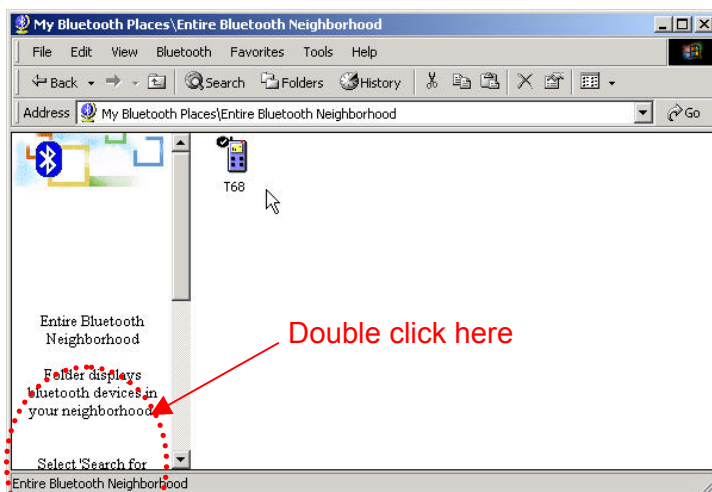


Figure 14. Found Configured Device

Step 2 Then, Double click on the **Search For Devices** icon. It will find your other bluetooth device as shown in Figure 14. If you have other Bluetooth devices in the area, they will be located and appear on your screen as Unknown. Only the devices that you have configured will have a name.

Note: Because of over-the-air interference and if you have a lot of devices in the evaluation area, then you might have to click on Search for Devices a few times .

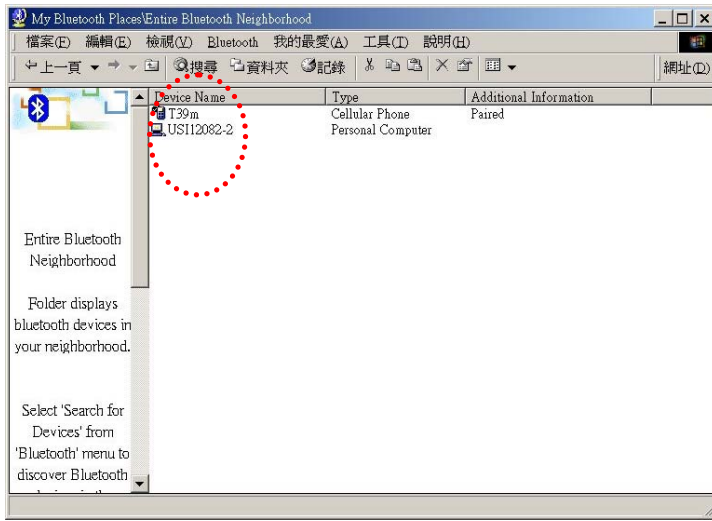


Figure 15. Found Configured Device

Step 3 On your master device, double click on the icon named after your slave device as shown in Figure 15. It will show all profile that the slave support as shown in Figure 16.

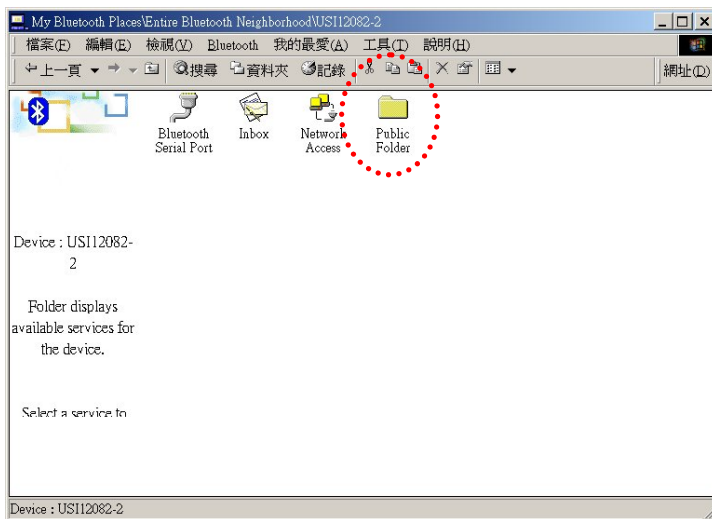
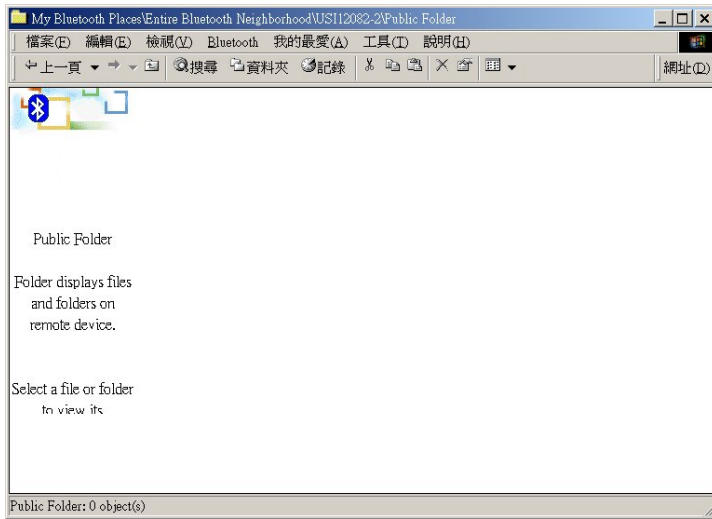


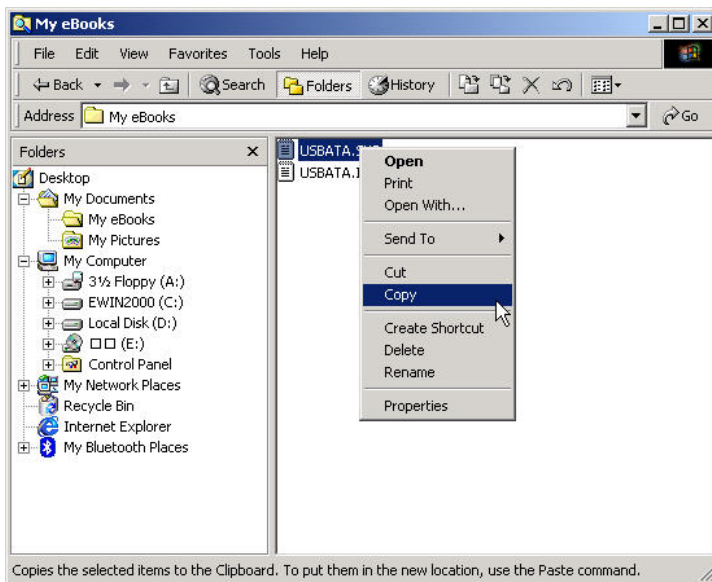
Figure 15. Explore Serices window

Step 4 Double click on the icon **Public Folder**. It will connect to the Shared Directory of the slave device (See the step 17). And show all the files in the Share Directory.



Step 5 Figure 17 show there are no files in the Share Directory.

Figure 17. Explore files window



Step 6 Now, you can copy files from the Files Manager master device.

Figure 18. Windows 2000 Files Manager

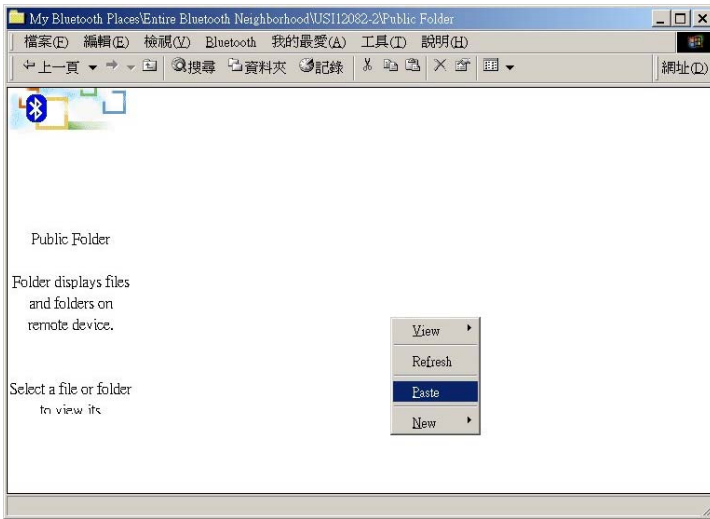


Figure 19. Paste files to Public Folder

Step 7 Then, Paste this file into Public Folder, A Copying Window appears as shown in Figure 20.

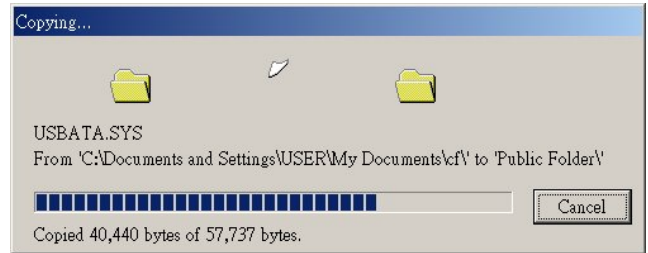


Figure 20. Copying...

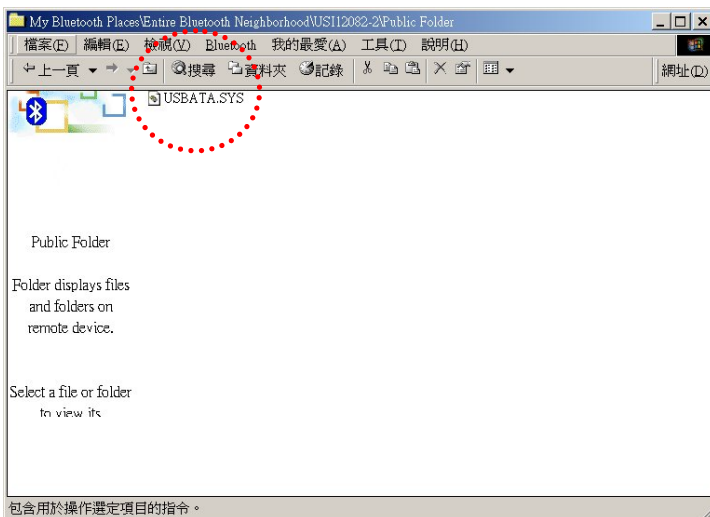


Figure 21. Copy completed window

Step 8 When the copy is completed, you will see the file name listed in the Public Folder.

Connecting Over The Bluetooth Airwaves – Security

Step 1 Go back to the icon tray (lower right-hand side of the screen) and right click on the small Bluetooth Neighborhood icon. Highlight **Configuration** on the pull down window.

Step 2 The Bluetooth Configuration window opens as shown in Figure 22. Select the **General** tab. Under Security, choose the **High** option. This will enable encryption. Click **OK**. (If you choose the Medium option, encryption will be disabled.)

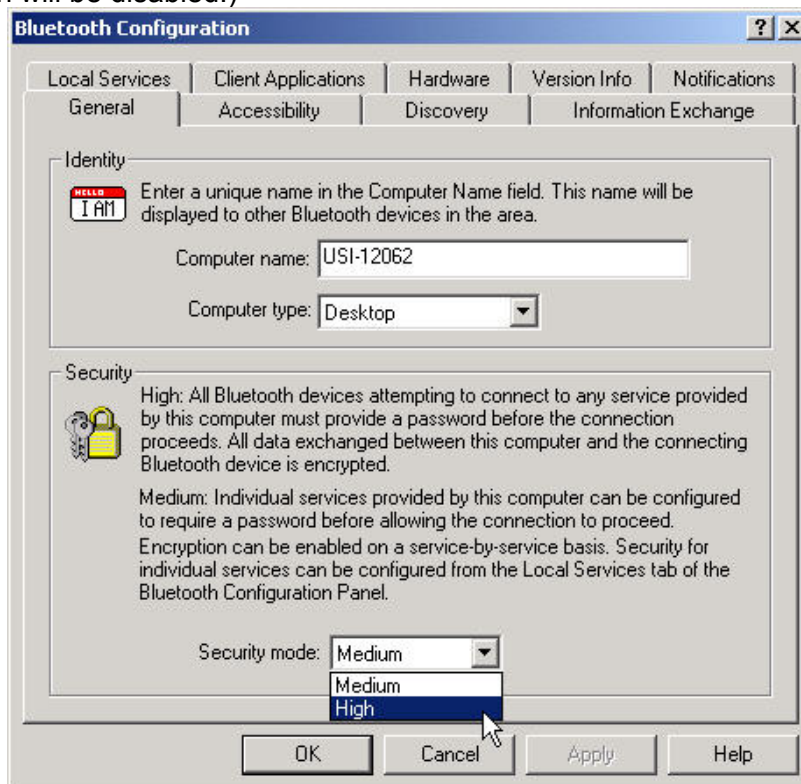


Figure 22. Bluetooth Configuration Window – Encryption Enabled

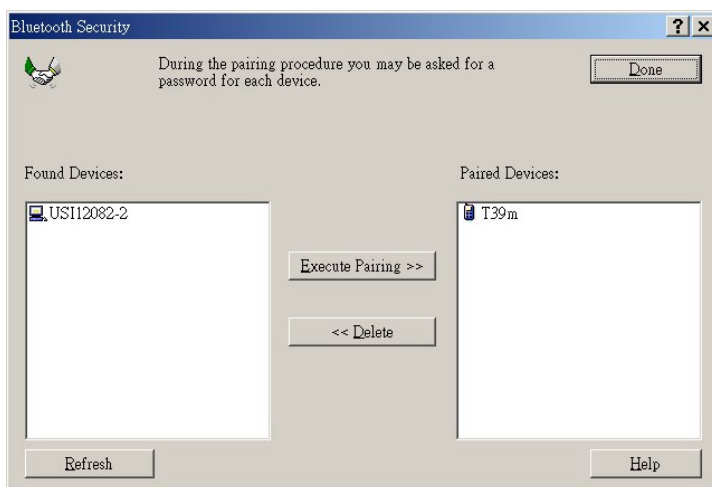


Figure 23. Bluetooth Security Window

Step 3 Send any file(s) in encrypted mode by repeating Step 2.

Step 4 For additional security, right click on the icon tray's small Bluetooth Neighborhood icon again. On the pull down window, highlight **Security**. The window shown in Figure 23 opens with two sections. All of your found devices will be on the left-hand side.

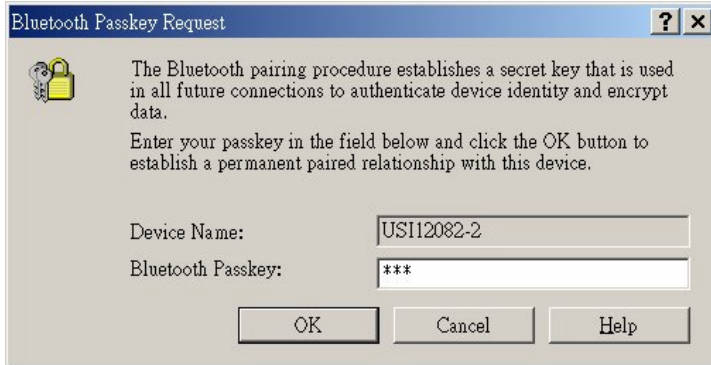


Figure 24. Bluetooth Passkey Request

Step 5 Highlight a device and click on the **Execute Pairing** button. Now this is the only device(s) that can connect to your computer. The user is asked for a passkey. The Bluetooth Passkey Request window opens as shown in Figure 24.

Step 6 Click on the **OK** button after entering the passkey in the Bluetooth Passkey window.

Step 7 On the other device, the Bluetooth icon on the icon tray (lower right-hand side of the screen) will blink. On clicking the icon a Bluetooth passkey request window pops up requesting the user to enter passkey. Enter the same passkey as given on the first device. Click on **OK** button. Successfully finding the Available services on the second device will Be an indication that we are in connection using pairing. If there is any Security Error message, make sure that the passkeys given on both devices are the same.

Start Connecting Over The Bluetooth Airwaves –Dial-up Networking Profile

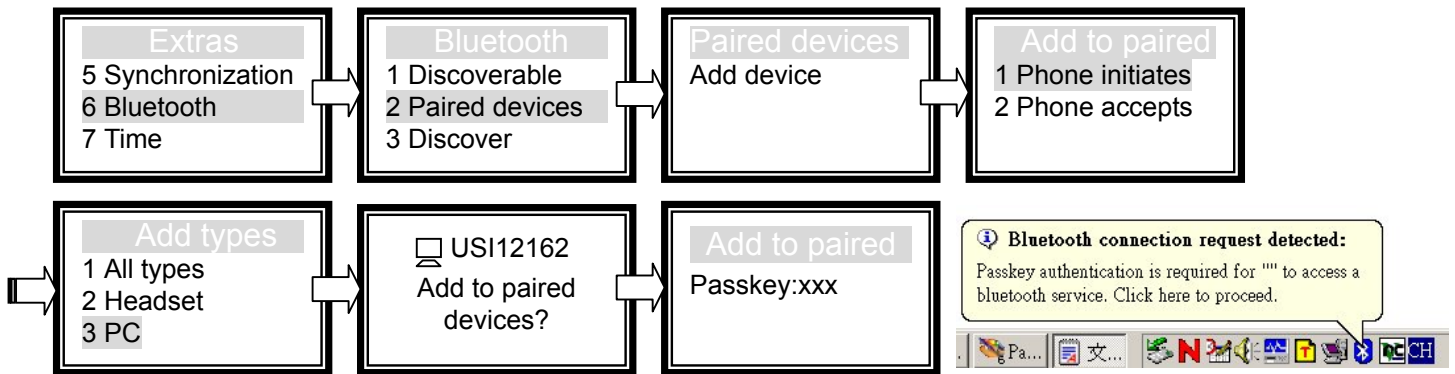
Example 1 : Use the ERICSSON T39mc mobile (with the Bluetooth module and GPRS service and provide Dial-up Networking Profile)

Step 1 Plug on the Bluetooth USB Dangle, Execute the BTW program ◦

Step 2 Before you using this application you must to pair the master device and T39mc, After pairing successfully at the first time, the PC and T39mc will recognize each other, Then, you can use the all services of the T39mc without being recognized again ◦

Step 3 Make pair from T39mc ◦

T39mc setting :



In this step you must enter the Passkey : xxx (for wmaple: 123) on the T39mc side , and then you will see a Bluetooth connection request detected message on the PC screen , click the icon and enter the same passkey(123) into the column ◦

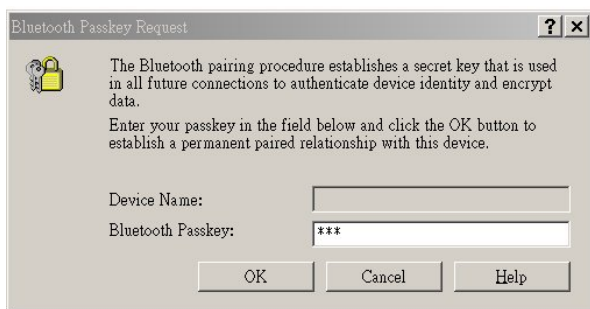
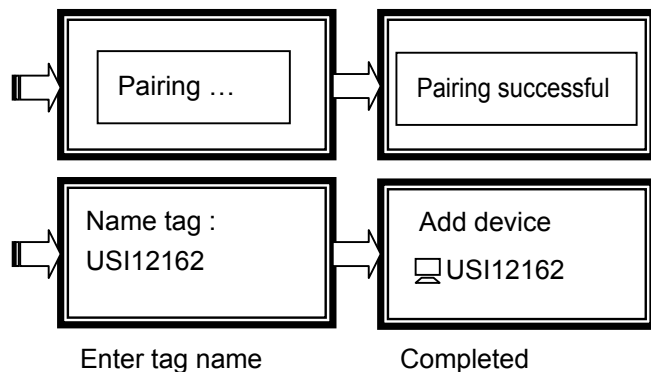


Figure 25 Bluetooth Passkey Request



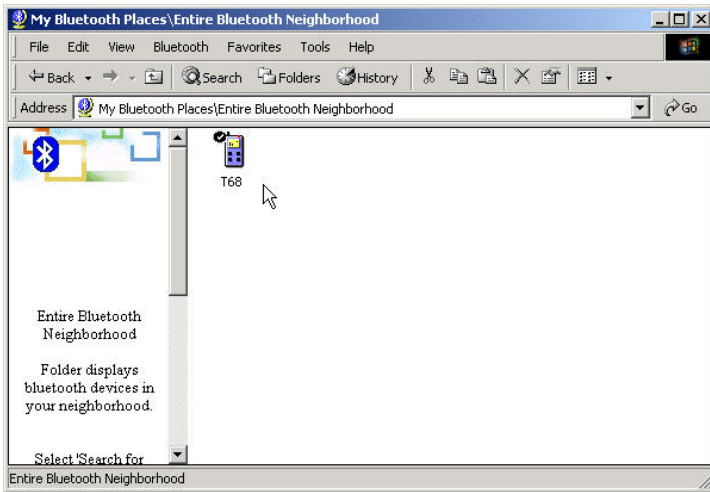




Figure 26. Found Configured Device

Step 4 After pairing finished, click  and you can see the icon  T39 .

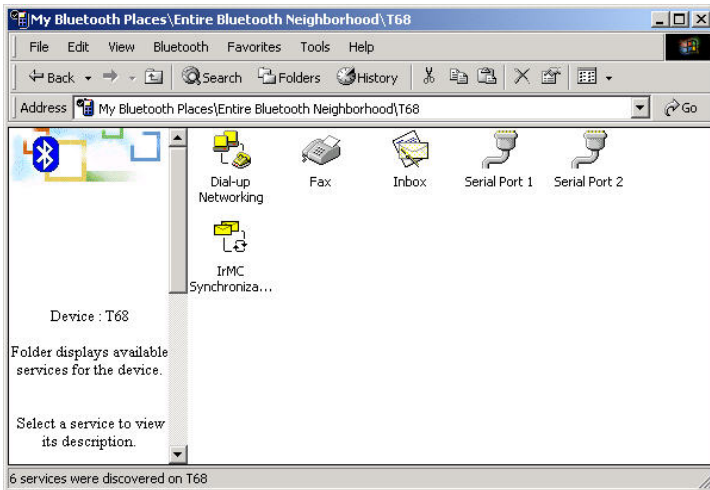


Figure 27. Explore Serices window



Step 5 Double click icon  T39 ,you can see what are the services T39mc support, click icon  Dial-up Networking .



Figure 28. Bluetooth Dial_up Window

Step 6 Enter the username , password and Dial_up number, then click Dial.
If it connect successful you see the Message **BluetoothConnection** .

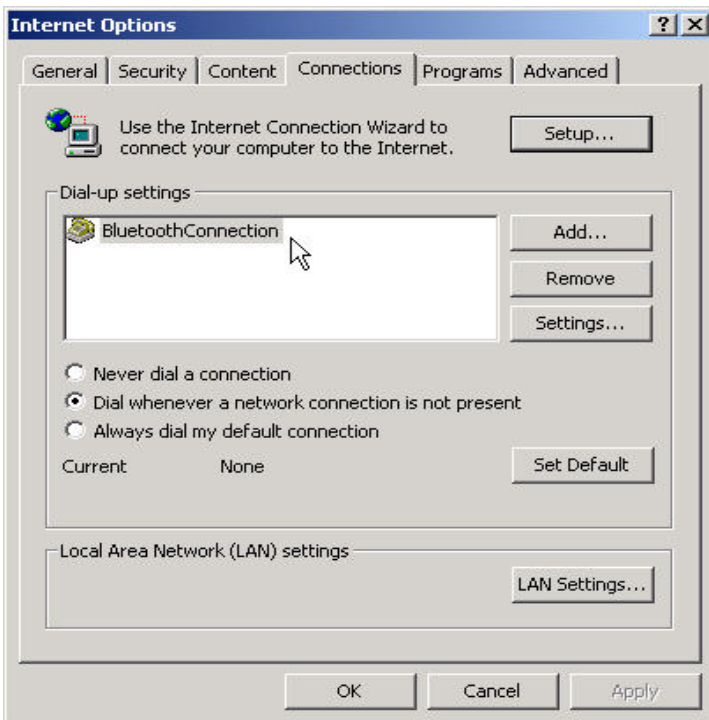


Figure 29. Internet Option Window

Step 7 Before you connect to web side, be sure to set the **BluetoothConnection** device to be your default connection.
Now, you can connect to web.



Technical Support

The identification of the product:

Product Name: UD-23011 Bluetooth USB Dongle

Model Name: UD-23011

Application: Desktop PC, Notebook

Technical Contact:

Universal Scientific Industrial Co., Ltd.

Address: 135, Lane 351, Taiping Rd., Sec. 1, Sec. 1, Tsao Tuen, Nan Tou, Taiwan

Contact Person: Chuei-Tang Wang

Telephone: +886-49-2325876 Ext.1800

Fax: +886-49-2329561

Email: ctwang@ms.usi.com.tw

Technical Contact in the US :

Address : 685A Jarvis Drive, Morgan Hill, CA 95037, USA

Telephone : +1-408-776-1966

Fax : +1-408-778-5509

Website: www.usi.com.tw

CAUTION: To maintain compliance with FCC's RF exposure guidelines, this equipment should be installed and operated with minimum distance 20cm between the radiator and your body. Use on the supplied antenna. Unauthorized antenna, modification, or attachments could damage the transmitter and may violate FCC regulations.

This device complies with Part 15 of the FCC Rules. Operation is subject to the following Two conditions:

- (1) This device may not cause harmful interference.
- (2) This device must accept any interference received, including interference that may Cause undesired operation.