

# **PCI TO USB CARD USER'S GUIDE**

## ***Introduction:***

This USB Card is a high-performance PCI-to-USB add-in controller card. The Controller is 100% compliant with the latest USB ( Universal Serial Bus ) and PCI Specification. The card is designed to comply with the OHCI ( Open Host Controller Interface) specification, which is an open standard that governs USB host Controllers. As a result, the card will be compatible with all USB peripherals with proper device driver support.

## ***Features:***

- a. Compliant with OHCI (Open Host Controller Interface) 1.0 , USB specification Rev1.0
- b. Compliant with PCI Local Bus 2.1 specification
- c. USB device bandwidth of up to 12Mbps
- d. Supports up to 127 devices
- e. Provides two fully compliant ports at 1.5Mbps/12Mbps
- f. Full support of realtime dynamic insertion and removal of devices
- g. Supports PCI-based 486, Pentium or Pentium II motherboards
- h. Supports all USB devices: keyboard, mouse, monitor, scanner, printer, telephone, joystick, gamepad etc. up to 127 devices.

## ***System Requirements:***

IBM PC compatible  
PCI specification support  
MS Windows 95® OSR 2.1 or support MS Windows 98® or higher

## ***Hardware Installation:***

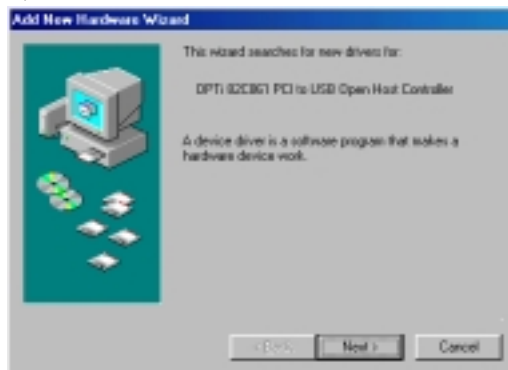
- Step 1: Turn the power off on your computer and disconnect the power cable
- Step 2: Open the computer case
- Step 3: Select an open PCI slot. Remove the cover plate for that slot.
- Step 4: Push the card into the slot
- Step 5: Attach the card's bracket to the back of the computer with the screw to fix
- Step 6: Close the computer case
- Step 7: Connect the power cable and turn the power on.

## ***Software Installation for Windows 98:***

Follow these steps to install the driver. See below:

Once Windows 95 or 98 starts up, it will automatically sense the card and open the Add New Hardware Wizard dialogue box. Follow the steps below to install the driver.

Step 1:



Step 2:



Click “Next” to continue

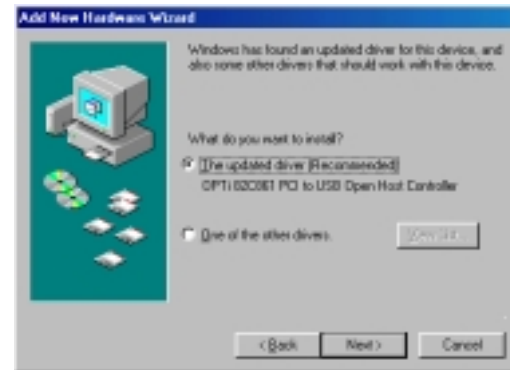
Click “Next” to continue

Step 3 :



Select “Specify a Location”, path “A:\” for your disk drive. Click “Next” to continue

Step 4 :



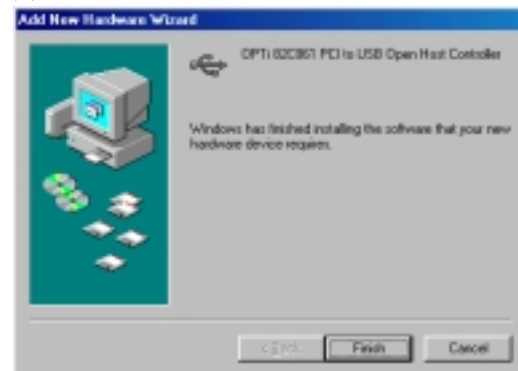
Click “Next” to continue

Step 5 :



Click “Next” to continue

Step 6 :



Install completed. Click “Finish” to complete installation

Step 7 :

