

USB TO PCI 4-Port Card with QudraBus™ Technology

Introduction

By using Lucent advanced QudraBus technology, each host supports a full 12 Mbps of bandwidth on each port, for a total USB host bandwidth of 48 Mbps. this product can provide 12 Mbps data transmission rate per port for four ports (i.e. 48 Mbps in total), you can feel the differences of transmission speed with normal USB to PCI port that 4 ports sharing 12 Mbps rate. The high-speed performance of this product will bring you great fun when high-speed USB devices such as Camera, Link, scanner, camera etc were connected.

Features

- Support full 12 Mbps of bandwidth on each port, for a total of USB host bandwidth of 48Mbps
- Meets USB spec Rev1.1, and Compliant with OHCI (Open Host Controller Interface) 1.0
- Compliant with PCI Local Bus 2.1 specification
- 4 USB A-type receptacle port
- Supports up to 127 USB devices
- Provides four fully compliant ports at transmission speed of 1.5Mbps and 12Mbps
- Full support of realtime dynamic insertion and removal of devices

System Requirements

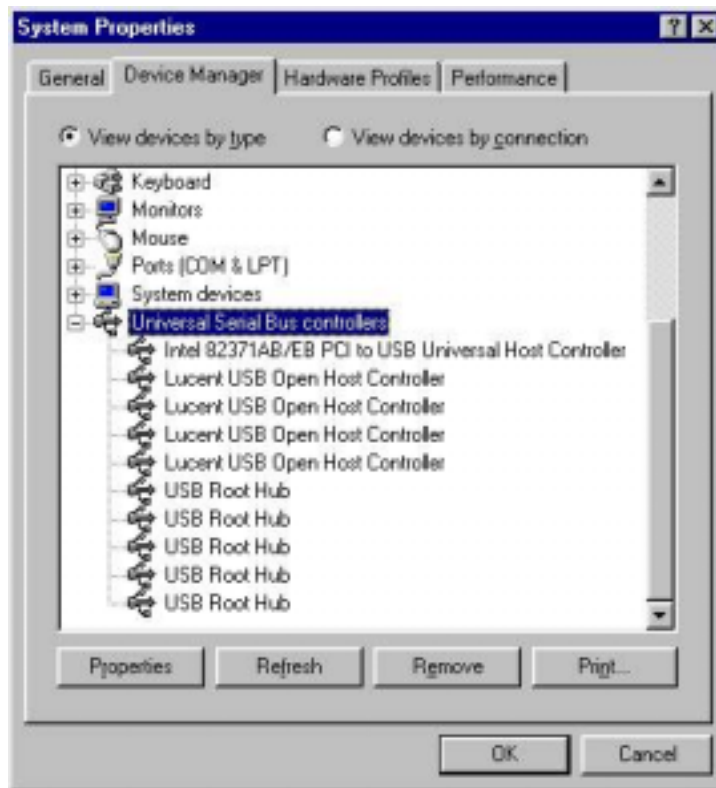
- IBM PC compatible under MS Windows 98, 98SE, ME and 2000 environment
- Mac G3 white of Blue or Mac G4 under Mac OS 8.6 or higher environment

Hardware Installation in PC

1. Turn the power off on your computer and disconnect the power cable
2. Open the computer case
3. Select an open PCI slot. Remove the cover plate for that slot.
4. Push the card into the slot
5. Attach the card's bracket to the back of the computer with the screw to fix
6. Close the computer case
7. Connect the power cable and turn the power on.

Software Installation for Windows 98, 98 SE and ME

When Windows 98, 98 SE or ME start up, it will automatically detect the USB to PCI 4 Port Card and open the Add New Hardware Wizard dialogue box. Follow the instruction of Wizard. At the final stage, Click 'Finish' button, then the installation of the USB to PCI 4 Port Card is completed. Finally, to ensure the Product is being installed properly, please go to the **Device Manager** of Properties in **My Computer** and double-click **Universal Serial Bus controllers** area, **Lucent USB Open Host Controller** is listed.



Packing

- The USB to PCI 4-port Card
- This Manual

QuadraBus is a registered trademark of Lucent Technology

FCC COMPLIANCE STATEMENT

This device complies with part 15 of the FCC Rules. Operation is subject to the following two conditions: (1) This device may not cause harmful interference, and (2) this device must accept any interference received, including interference that may cause undesired operation.

INFORMATION TO USER:

This equipment has been tested and found to comply with the limits of a Class B digital device, pursuant to Part 15 of the FCC Rules. These limits are designed to provide reasonable protection against harmful interference in a residential installation. This equipment generates, uses and can radiate radio frequency energy and, if not installed and used in accordance with the instructions, may cause harmful interference to radio communications. However, there is no guarantee that interference will not occur in a particular installation; if this equipment does cause harmful interference to radio or television reception, which can be determined by turning the equipment off and on, the user is encouraged to try to correct the interference by one or more of the following measures:

1. Reorient / Relocate the receiving antenna.
2. Increase the separation between the equipment and receiver.
3. Connect the equipment into an outlet on a circuit different from that to which the receiver is connected.
4. Consult the dealer or an experienced radio/TV technician for help.

CAUTION: Changes or modifications not expressly approved by the manufacturer responsible for compliance could void the user's authority to operate the equipment