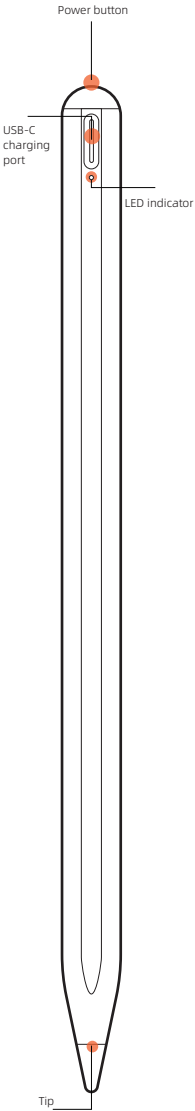


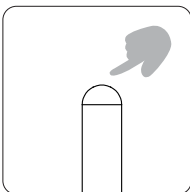
Uogic®





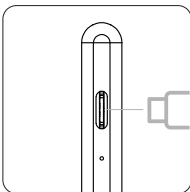
Operating Instruction

1. To turn on the stylus, press power button for 1 second, the indicator will be lit. To turn off the stylus, press power button for 2



2. Charge the stylus with USB-C cable.

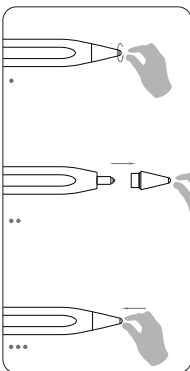
3. The stylus will off automatically after 1 hour of use for.



4 . Attach magnetically .



5. Replace the tip (unscrew the old tip and screw a new pen tip).



LED indicator description

The pen will into Bluetooth pairing mode after turning on the pen. (Blue indicator flash) The Bluetooth pairing mode will last to 30 seconds. When the pen is connected, the indicator stops flashing.	
Working	Green light
Charging	Red light
Full charged	Green light
When the low battery, the red indicator will flash 15 times then the pen will turn off automatically.	

Bluetooth Pairing Instruction:

- 1.Unlock ipad and into Settings.
2. Tap bluetooth and turn on bluetooth.
3. Turn on the stylus.
4. Pencil will appear under OTHER DEVICES and tap pencil.

Note: If you want to connect the pen to another iPad, you have to disconnect the Pencil from the first iPad first.

Product Parameter

Product Name	Uogic Pencil
Mode Number	AC105
Bluetooth	BLE5.3
Input	5V = 200mA
Battery Capacity	130mah
Max Battery Output Voltage	3.7V
Working Temperature	0°C-35°C
Charging time	≤1h
working hours	10h
inventory	Capacitance pen x1 Charging line x1 Replace NIB x1 Instruction x1

All the above data and info come from the lab. They might vary with the environment or other factors.

FCC Statement

This device complies with part 15 of the FCC rules. Operation is subject to the following two conditions: (1) this device may not cause harmful interference, and (2) this device must accept any interference received, including interference that may cause undesired operation.

Changes or modifications not expressly approved by the party responsible for compliance could void the user's authority to operate the equipment.

NOTE: This equipment has been tested and found to comply with the limits for a Class B digital device, pursuant to part 15 of the FCC Rules. These limits are designed to provide reasonable protection against harmful interference in a residential installation. This equipment generates uses and can radiate radio frequency energy and, if not installed and used in accordance with the instructions, may cause harmful interference to radio communications. However, there is no guarantee that interference will not occur in a particular installation. If this equipment does cause harmful interference to radio or television reception, which can be determined by turning the equipment off and on, the user is encouraged to try to correct the interference by one or more of the following measures:

- Reorient or relocate the receiving antenna.
- Increase the separation between the equipment and receiver.
- Connect the equipment into an outlet on a circuit different from that to which the receiver is connected.
- Consult the dealer or an experienced radio/TV technician for help.

The device has been evaluated to meet general RF exposure requirement. The device can be used in portable exposure condition without restriction.

Warranty Card

Order Number
Model Number
Product Code
Customer Name
Phone number
Date of Purchase
Address of Purchase

