



2.Prüfentwurf
03F037-08
23.04.2008

Mercedes-Benz

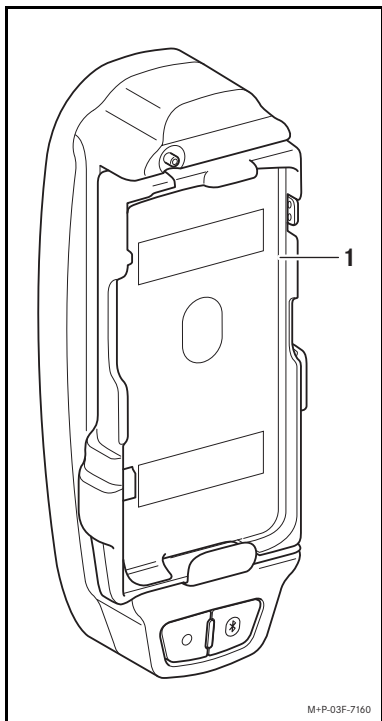
Accessories

Installation and Operation Instructions

Mercedes-Benz Bluetooth[®] Cradle for
Motorola mobile phones RAZR² V9 and
RAZR² V9m

USA

***Mercedes-Benz Bluetooth[®] Cradle
for Motorola mobile phones
RAZR² V9 and RAZR² V9m***





Application

These installation instructions are valid for vehicles with an MHI hands-free communication system and a Mercedes-Benz-approved Motorola mobile phone RAZR² V9 or RAZR² V9m with approved software level. Approved mobile telephones are listed and can be purchased on the Internet at www.wireless4mb.com or call 1-800-910-1021 to speak to a wireless telephone specialist.

Parts included

- (1) Mercedes-Benz Bluetooth[®] Cradle

Warning

Always use approved phones with the Mercedes-Benz Cradle. Operating a non-approved phone or radio transmitter with its own attached or built-in antenna while the engine is running can interfere with the vehicle's electronic system. For safety reasons, the driver should not use the mobile phone while the vehicle is in motion. We encourage the driver to stop the vehicle in a safe location before answering or placing a call.

The installation and operation is described for the Motorola RAZR² V9 phone. Installation and operation of the Motorola RAZR² V9m phone is done in the same manner.

Notes

The Motorola RAZR² V9 will not fit in the Mercedes-Benz Bluetooth[®] Cradle for Motorola RAZR² V9m and the Motorola RAZR² V9m will not fit in the Mercedes-Benz Bluetooth[®] Cradle for Motorola RAZR² V9.

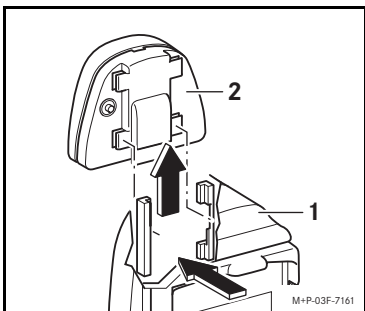
Please contact your local Mercedes-Benz Center if you encounter difficulties when operating the Mercedes-Benz Hands-Free Communication System.

More information can be found on the Internet at www.wireless4mb.com or call 1-800-910-1021 to speak to a wireless activation specialist.

We reserve the right to change technical details from those shown in the illustrations contained in these installation instructions.

These installation instructions also refer to the Vehicle Operator's Manual, COMAND Operator's Manual, and mobile telephone manual. Please keep them available for reference.

Installing the Mercedes-Benz Cradle



1. Insert the Mercedes-Benz Cradle (1) into the latches on the pre-installed MHI contact plate (2), located in the center console.

To insert the Mercedes-Benz Cradle (1), slide it upwards until it clicks into place.

Inserting mobile telephone

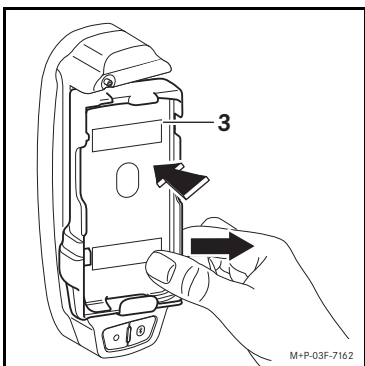
The Motorola RAZR² V9 phone can only be used inside of the Mercedes-Benz Cradle for use in hands-free mode. The Mercedes-Benz Cradle uses Bluetooth[®] technology to connect with your Motorola RAZR² V9 phone. Make sure you have established a Bluetooth[®] connection before using the Mercedes-Benz Cradle, see pairing procedure on page 6.

When using the Motorola RAZR² V9 phone in the cradle, the Motorola RAZR² V9 phone will also be charged and connected to the vehicle's external mobile antenna for improved reception.

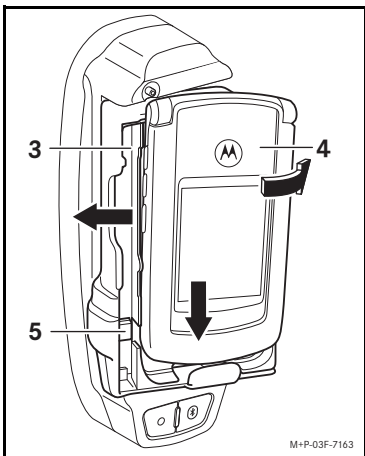
Close the flip screen of the Motorola RAZR² V9 phone before inserting it into the Mercedes-Benz Cradle.

Note

Closing the mobile phone flip screen ends the call.



1. Push the latch (3). The latch (3) will swing out.
2. Aufnahme (3) nach rechts rausziehen.



M+P-03F-7163

3. Mobiltelefon (4) zunächst unten in die Aufnahme (3) einsetzen und anschließend komplett einlegen.

4. Aufnahme (3) nach links zuschieben; dabei darauf achten, dass

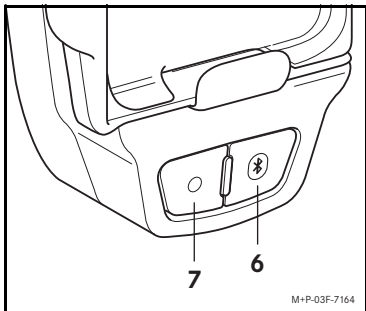
- der Stecker (5) am Mobiltelefon (4) einrastet und
- die seitlichen Tasten am Mobiltelefon (4) nicht betätigt werden.

5. Aufnahme (3) mit Mobiltelefon (4) zurückdrücken, bis sie einrastet.

Pairing the Motorola RAZR² V9 phone with the Mercedes-Benz Cradle

Zum Koppeln muss sich das Mobiltelefon außerhalb des Halters im Fahrzeug befinden.

1. Make sure that the ignition switch is in position 1, 2 or 3 (see the Vehicle Operator's Manual).



1. With Mercedes-Benz Cradle connected to the vehicle press button (6) for approx. 2–3 seconds.

The LED (7) will begin to flash rapidly. The Mercedes-Benz Cradle is in Discovery Mode and can be detected by the Motorola RAZR² V9 phone. The Mercedes-Benz Cradle will appear as “MB RAZR2 cradle” on the Motorola RAZR² V9 phone.

2. For instructions on how to get the mobile telephone ready for pairing, see the mobile telephone manual or visit www.wireless4mb.com. Once the Motorola RAZR² V9 phone and Mercedes-Benz Cradle find each other the Motorola RAZR² V9 phone will prompt the user to enter a Pass-Key.

3. When prompted, enter the Pass-Key 62872 into the Motorola RAZR² V9 phone.

Note

As soon as the Pass-Key has been entered and accepted, you will see a display message on your mobile phone indicating that the connection has been established. The connection between the mobile phone and the cradle is cut off automatically.

4. The Motorola RAZR² V9 phone is now ready for use with the Mercedes-Benz Hands-Free Communication System.

Note

A maximum of 4 Motorola RAZR² V9 phones can be paired with the Mercedes-Benz Cradle. If a fifth Motorola RAZR² V9 phone is paired with the Mercedes-Benz Cradle, then the information stored from the first Motorola RAZR² V9 phone which was paired with the Mercedes-Benz Cradle will be replaced.

Establishing a Bluetooth[®] connection

1. Insert the mobile phone into the cradle and turn the key to position 1, 2 or 3 in the ignition switch (see the vehicle Owner's Manual).

Notes

A Bluetooth connection will not be established if the Motorola RAZR² V9 phone is not inserted in the cradle.

The Mercedes-Benz Cradle will search for a paired Motorola RAZR² V9 phone and reconnect.

If the connection between the Mercedes-Benz Cradle and Motorola RAZR² V9 phone is not established automatically, it is possible to establish a connection manually (see page 8).

SMS messages can not be accessed via the COMAND or radio while the Bluetooth[®] connection is established.

Not every ring-tone of the Motorola RAZR² V9 phone is supported by the COMAND or radio.

3-way-calling and call waiting are not supported in the Mercedes-Benz Cradle. An audible beep will notify a waiting call.

The roaming indication is not supported by the COMAND or radio.

The Tele Aid System (emergency call system) will continue to function independently of the hands-free phone system as designed as long as there is a valid service contract, telephone service and a GPS coverage.

Connecting the Motorola RAZR² V9 phone and Mercedes-Benz Cradle manually

Press the Bluetooth[®] button on the Mercedes-Benz Cradle.

or:

For all Mercedes-Benz vehicles up to model year 2008 (with the exception of the model year 2007 S-Class/CL-Class):

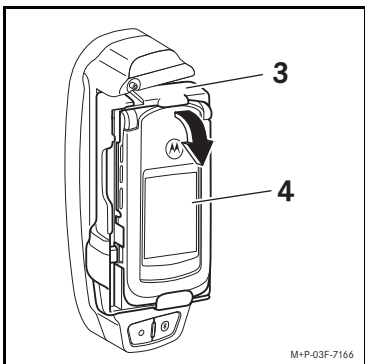
- Press **TEL** button on the COMAND or radio.

For model year 2007 S-Class/CL-Class vehicles:

- Using the COMAND Controller, select *“Telephone”* → *“Telephone”* → *“Telephone on”*.

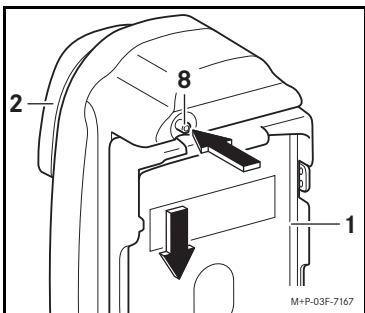
Note

Before manual connection, the Motorola RAZR² V9 phone must previously be paired with the Mercedes-Benz Cradle, see pairing procedure on page 6.



3. Mobiltelefon (4) wie abgebildet aus der Aufnahme (3) entnehmen.
4. Aufnahme (3) nach links zuschieben und zurückdrücken, bis sie einrastet.

Detaching the Mercedes-Benz Cradle



1. Press and hold the release button (8). Slide the Mercedes-Benz Cradle (1) downwards and remove it from the pre-installed contact plate (2).

Note

This device complies with part 15 of the FCC Rules. Operation is subject to the following two conditions:

- This device may not cause harmful interference.
- This device must accept any interference received, including interference that may cause undesired operation.

Changes or modifications not expressly approved by the party responsible for compliance could void the user's authority to operate the equipment.

© 2008 Mercedes-Benz Accessories Inc.
Not to be reprinted, translated or otherwise
reproduced, either wholly or in part.
Mercedes-Benz Accessories Inc., Stuttgart ·
A Daimler AG Company
04/08
03F037-08

Printed on 100 % Recycled Paper