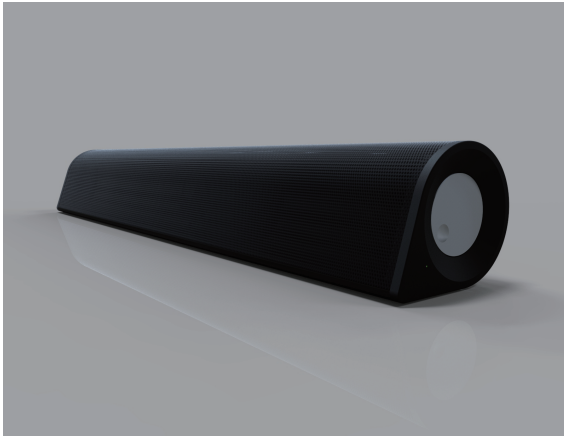


# Soundbar

## GGBSBRR



User manual

### User manual

#### FunctionGraphic

- 1 Volume knob
- 2 LED indicator
- 3 3.5mm AUX port
- 4 Micro USB port



#### Main Function

Audio amplifier ,Bluetooth wireless connection with blue tooth device , Supports Wireless Music Streaming via Bluetooth Technology.

Soundbar style multi-media speaker

Good match with LCD Monitor and digital device.

; 3.5mm standard audio input jack ,can use as the audio amplifier of play media such as PC ,MP3,MP4,MP5,CD ,IPOD ,IPHONE and so on .

Volume knob -Easy to control on/off and control volume.

#### Specifications

- Power supply : DC 5V
- Power output : 3Wx2
- Speaker drivers : 50mm 4OHM10Wx2
- Frequency response : 80~20KHz
- S/N : ≥70DB

#### Instructions

- Audio play

Use speaker's USB 5V power plug and 3.5mm line in to connect with computer ,or MP3,MP4,MP5,CD ,IPOD ,IPHONE and so on,clockwise revolve the knob on the right side to switch on ,power indicator light will be on ,the sound volume is minimum when switch on ,clockwise revolve the knob ,the volume increase ,anticlockwise revolve the knob ,the volume reduces

- Bluetooth play

Use speaker 's USB 5V power plug and search blue tooth by your blue tooth device ,then connect it to play .

- Battery Charge :Use speaker 's USB 5V power plug to charge .

**Accessories** : 1pc 2.0 blue tooth mini sound bar ,User manual .

**FCC Warning:**

This equipment has been tested and found to comply with the limits for a Class B digital device, pursuant to part 15 of the FCC Rules. These limits are designed to provide reasonable protection against harmful interference in a residential installation. This equipment generates, uses and can radiate radio frequency energy and, if not installed and used in accordance with the instructions, may cause harmful interference to radio communications. However, there is no guarantee that interference will not occur in a particular installation. If this equipment does cause harmful interference to radio or television reception, which can be determined by turning the equipment off and on, the user is encouraged to try to correct the interference by one or more of the following measures:

- o Reorient or relocate the receiving antenna.
- o Increase the separation between the equipment and receiver.
- o Connect the equipment into an outlet on a circuit different from that to which the receiver is connected.
- o Consult the dealer or an experienced radio/TV technician for help.

**Caution:** Any changes or modifications to this device not explicitly approved by manufacturer could void your authority to operate this equipment.

This device complies with part 15 of the FCC Rules. Operation is subject to the following two conditions: (1) This device may not cause harmful interference, and (2) this device must accept any interference received, including interference that may cause undesired operation.

To comply with FCC RF exposure compliance requirements, this grant is applicable to only mobile configurations. The antennas used for this transmitter must be installed to provide a separation distance of at least 20 cm from all persons and must not be co-located or operating in conjunction with any other antenna or transmitter.