

M5200B

# Sound bar Speaker

## user manual

imagine the possibilities

Thank you for purchasing this vanke soundbar product.

To receive more complete service,

please Read the manual carefully

[www.vanke-speaker.com](http://www.vanke-speaker.com)

**Shenzhen Vanke Loudspeaker Products Co.,Ltd.**

Vanke Industrial Park, Bingtang Mountain, Shaping Road, Shawan, Buji Town, Shenzhen, Guangdong, China

# IMPORTANT SAFETY INSTRUCTIONS

## **READ MANUAL**

Read all the safety and operating instructions before the product is operated.

## **RETAIN MANUAL**

This manual should be retained for future reference.

## **HEED WARNINGS**

All warnings on the product and in the operating instructions should be adhered to.

## **FOLLOW INSTRUCTIONS**

All operating and use instructions should be followed.

## **CLEANING**

The product should be cleaned only with a polishing cloth or a soft dry cloth. Never use volatile liquids since they may damage the product.

## **WATER AND MOISTURE**

Do not use this product near water such as near a bathtub, kitchen sink, in a wet basement; or near a swimming pool, etc.

## **OBJECT OR LIQUID ENTRY**

Do not insert any kind of object into this product through any opening as they may make contact with electrical points and result in a fire or electric shock. Avoid spilling any kind of liquid on the product.

## **VENTILATION**

Openings in the cabinet are provided for ventilation and to protect the product from overheating, and these openings must not be blocked or covered.

## **HEAT**

The product should be placed away from sources of heat such as radiators, stoves, or other products that produce heat. Leave a comfortable gap between this product and all other electronics in your Home Theater system.

## **LOCATION**

This product should be installed in a stable location.

## **POWER-CORD PROTECTION**

Power-supply cords should not be stepped on or pinched by items placed upon or against them. Pay particular attention to cords at plugs and the point where they exit from the product.

## **OVERLOADING**

Do not overload wall outlets, extension cords, or power strips as this can result in a risk of fire or electric shock.

## **POWER SOURCES**

This product should be operated only from the type of power source indicated on the label. If you are not sure of the type of power supply to your home consult your local power company.

## **NONUSE PERIODS**

The power cord should be unplugged from the outlet when left un-used for a long period of time.

## **LIGHTNING**

For extra protection during a lightning storm or when the product is left unattended and unused for long periods of time, unplug the power cord. This will prevent damage due to lightning and power surges.

## **SERVICING**

Do not attempt to service this product yourself as opening the product may expose you to electric shock, or the product may be damaged. Refer all servicing to qualified service personnel.

## DAMAGE REQUIRING SERVICE

Unplug this product from the wall outlet and contact a qualified service personnel under the following

### conditions

- >When the power-supply cord or plug is damaged.
- >If liquid has been spilled, or objects have fallen into the product.
- >If the product has been exposed to rain or water.
- >If the product does not operate normally following the instructions in his manual.
- >If the product has been dropped or damaged in any way.
- >When the product exhibits a distinct change in performance.

### CAUTION

TO PREVENT ELECTRIC SHOCK DO NOT PLUG A CABLE INTO A WALL OUTLET, EXTENSION CORD, OR OTHER RECEPTACLE UNLESS THE METAL BLADES CAN BE FULLY INSERTED TO PREVENT BLADE EXPOSURE.

## SAFETY INFORMATION



**CAUTION:** TO PREVENT THE RISK OF ELECTRIC SHOCK, DO NOT OPEN THIS PRODUCT NO USER- SERVICEABLE PARTS INSIDE. REFER SERVICING TO QUALIFIED SERVICE PERSONNEL.



The exclamation point within an equilateral triangle is intended to alert the user to the presence of important operating and safety instructions in the literature accompanying the appliance.



The lightning flash with arrowhead within an equilateral triangle is intended to alert the user to the presence of uninsulated "dangerous voltage" within the product's enclosure that may be a risk of electric shock to persons.

Extreme Temperature: 45 degrees Celsius

## Shenzhen Vanke Loudspeaker Products Co.,Ltd.

Vanke Industrial Park, Bingtang Mountain, Shaping Road, Shawan, Buji Town, Shenzhen, Guangdong, China  
Soundbar Speaker

Model: M5200B

AC/DC Adapter: FJ-SW2401500E (SHENZHEN FU JIA APPLIANCE CO., LTD.)

Output: 24V 1.5A

Input: 100-240Vac 50/60Hz

## Protection function

Adapter shall be installed near the equipment and shall be easily accessible

The power supply will be auto recovered when short circuit faults remove.

The power supply will auto protected when output current over 2.25A at 115VAC.

The power supply will auto Protection: when the voltage over 120%-150% rate voltage.

This device complies with part 15 of the FCC Rules. Operation is subject to the following two conditions: (1) This device may not cause harmful interference, and (2) this device must accept any interference received, including interference that may cause undesired operation.



Proper disposal of this product. This label indicates that, in the EU, electronic devices cannot be disposed of with regular household waste. Please use the return or collections systems of your municipality or contact the seller where you purchased this product.

 **Note**

This equipment has been tested and found to comply with the limits for a Class B digital device, pursuant to part 15 of the FCC Rules. These limits are designed to provide reasonable protection against harmful interference in a residential installation. This equipment generates, uses, and can radiate radio frequency energy and, if not installed and used in accordance with the instructions, may cause harmful interference to radio communications. However, there is no guarantee that interference will not occur in a particular installation. If this equipment does cause harmful interference to radio or television reception, which can be determined by turning the equipment off and on, the user is encouraged to try to correct the interference by one or more of the following measures:

- > Reorient or relocate the receiving antenna.
- > Increase the separation between the equipment and receiver.
- > Connect the equipment into an outlet on a circuit different from that to which the receiver is connected.
- > Consult the dealer or an experienced radio/TV technician for help.

 **Caution**

Changes or modifications not expressly approved by the party responsible for compliance could void the user's authority to operate the equipment.

We appreciate your choosing Sound bar for use in your home. These unique sound bar will provide you with powerful and satisfying sound from an ultra stylish & compact package. Please read this manual completely to ensure the best possible performance from your system.

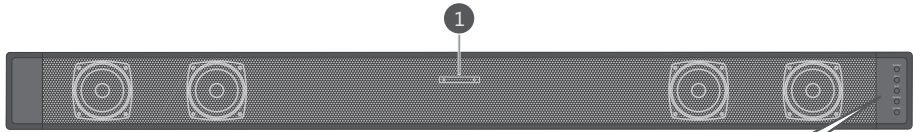
# WHAT'S INCLUDED



Main Unit

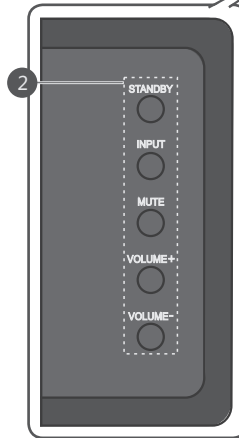
			
Remoto Control	DC Adapter	Mounting Bracket	Screws (1set)
			
RCA Cable	User Manual		

# FRONT PANEL

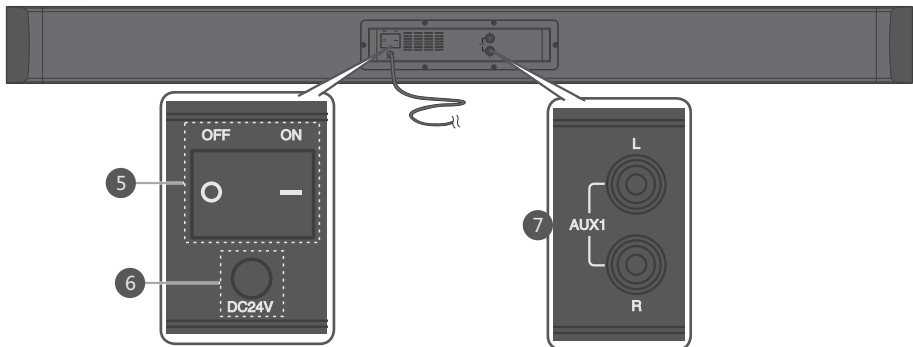


1 **LED Verde / Azul / Rojo**  
Digital Display

- 2 **STANDBY:** Standby switch button  
**INPUT:** Input signal select button. AUX→BT to toggle through choices  
**MUTE:** Mute the sound  
**VOLUME+/-:** Sound bar volume control buttons



# REAR PANEL



5 **Power ON/OFF**  
Turn the sound bar on or off

6 **DC IN**  
Connect to the electrical outlet

7 **AUX IN**  
Connect to the RCA input jack of the TV

# REMOTE CONTROL DESCRIPTION

## ST-BY

Sleep mode, ready to be put to use as and when required

## INPUT

Selects audio input mode (RCA/BT)

## PREV

Move Previous

## MUTE

Mute the sound

## VOL-/+

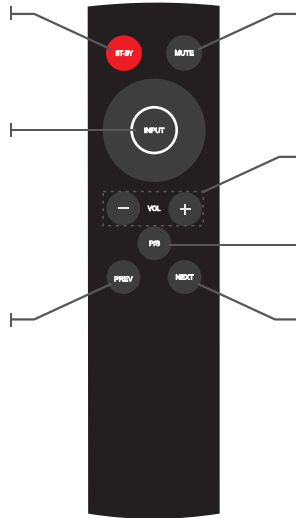
Adjusts the speaker volume

## P/S

Play stop

## NEXT

Move NEXT

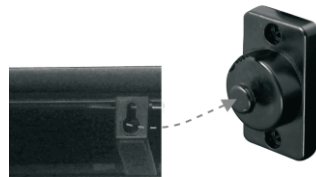


# INSTALLATION INSTRUCTIONS

- > Please refer to the back of the soundbar Wall mounting spacing (400mm); fixed screw holes(A) must be placed in proper position on the wall(step 1).
- > Faster screws(B) in the correct positioning holes, thereby installing the plastic cradle(Step 1).
- > Soundbar fastens directly to the plastic bracket(Step 2).

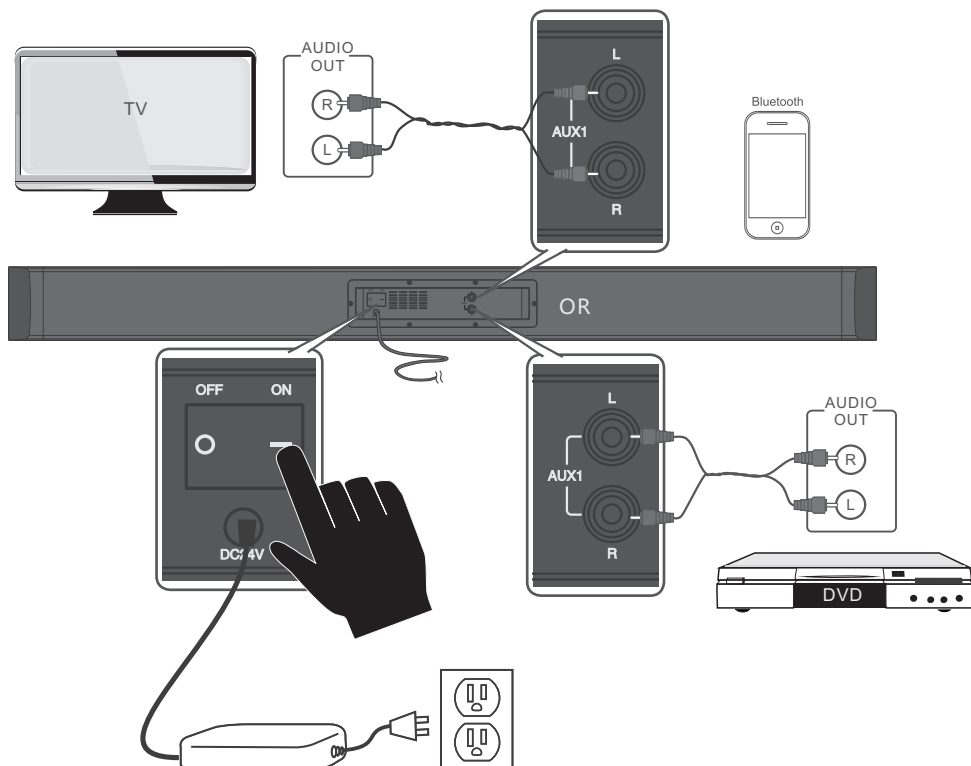


Paso 1



Paso 2

# HOW TO CONNECT YOUR BAR



## Bluetooth

Press input in Remote for to BT

**And**

## AUX DVD/TV

Connect AUX IN(Audio) on the main unit to the AUDIO OUT of the TV or Source Device.

Be sure to match connector colors.

# SOUND BAR FEATURE

- >2.0 channel soundbar
- >Soundbar materials: Plastic
- >Total Power output: 20Wx2
- >RCA input x 1;
- >Support Movie, TV ,Music sound modes
- >Connect TV, DVB, DVD, PC,iPad, iPhone and other exterior media source

# SPECIFICATIONS

<b>Speakers:</b>	<b>Full range speakers 50mm x6pcs</b>
Output sound press:	85dB
Frequency response:	60~20KHz
Remote control system:	infrared
Adapter input:	AC100V-AC240V 50Hz/60Hz 0.4A Max
Power output:	24V
Standby power :	<0.5W
Sound bar size:	L1000xD53xH85mm
Package size:	L1108xW103xH138mm