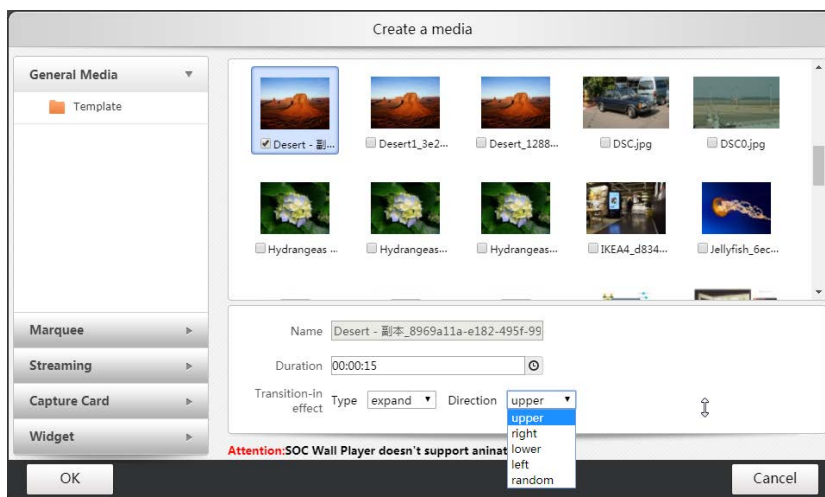
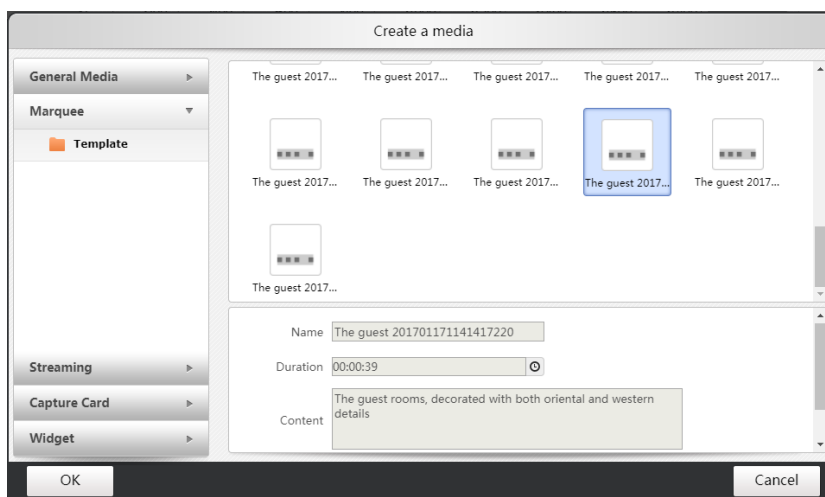


- b. The pictures in the same directory can be multi-selected.
- c. Transition effect. If user selects transition effect, the duration cannot be 0s.



- Text:

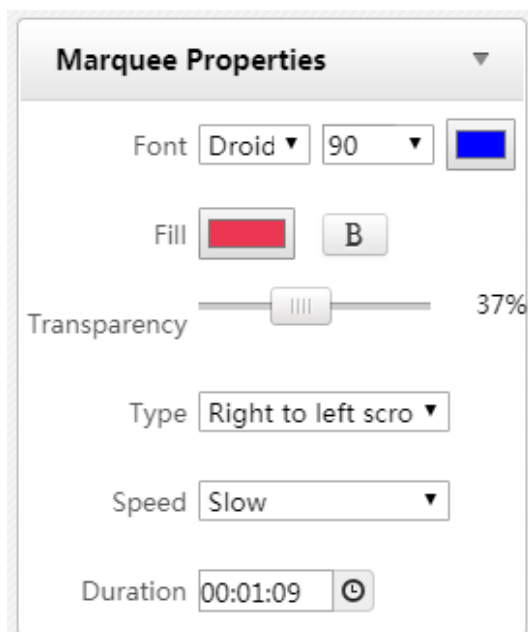
- a. Reference file: this option, said the marquee file is not modified. Do not check, said marquee can be modified; the modified file is not synchronized to the media library, only for this playlist.



Select the marquee, and edit marquee attributes in the right area:


- a. Two types of Text: static and marquee;
- b. Edit the font type, size and color;

- c. Background color;
- d. Transparency;
- e. The speed of marquee: Slow, Medium and Fast; user can modify the speed according to reference time.



Note:

Change the playback order by dragging the published media file.

Step 5 : Click the button  to save the scene. A new scene is created.

Step 6 : Add other scene again according to the above steps. A new playlist is creatd.

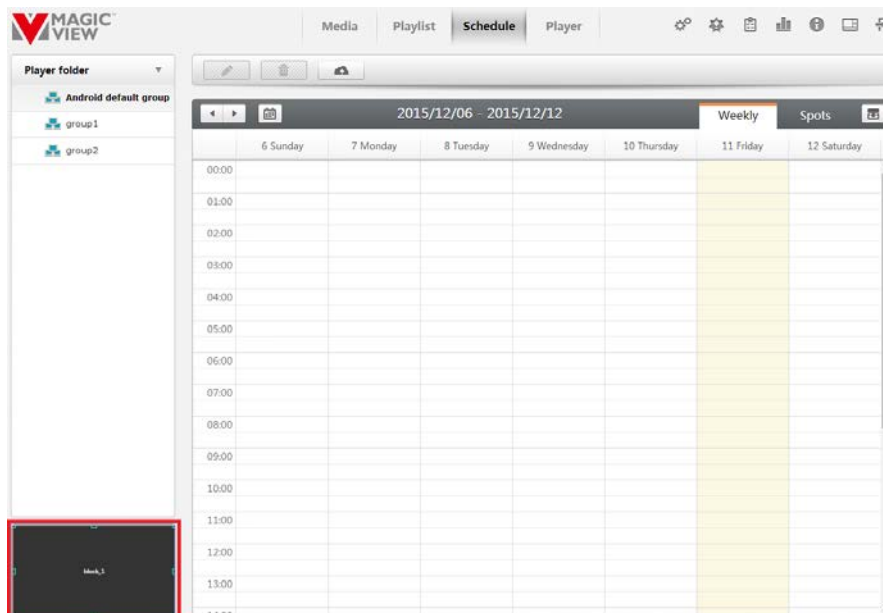
Schedule

Schedule is for player group, it includes layout, media, playback time, etc.

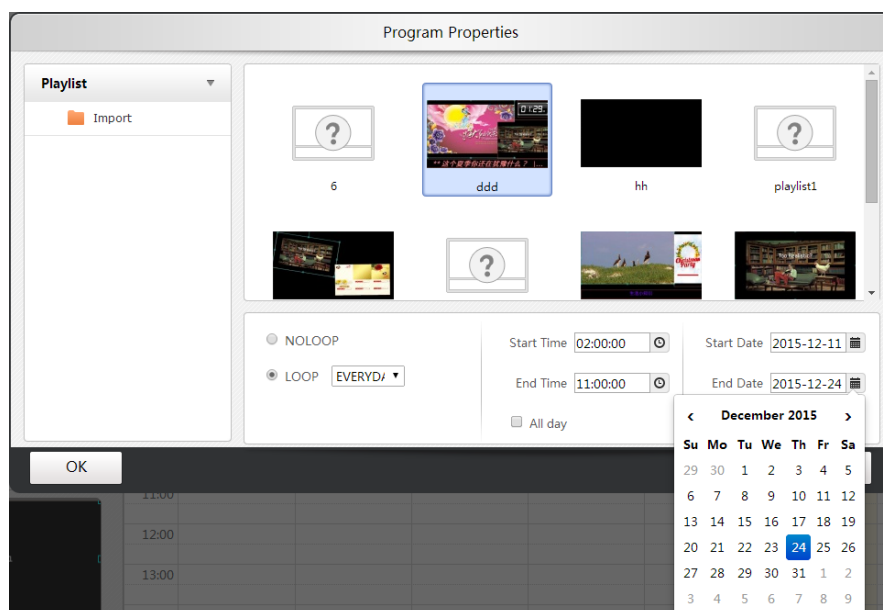
Create the schedule

Step 1 : Select the player group.

Step 2 : Select the block in the layout preview. (If there is only one block in the layout, it is selected by default.)



Step 3 : Move the pointer to the calendar region. Press the right-button and drag the mouse, the following dialog box will pop up.



Choose one playlist and set start/end time/date.

The following example is based on the following configuration:

Start time is set to 2:30; end time is 18:45.

Start date is Dec 11, 2015; end date is Dec 24, 2015.

Loop type:

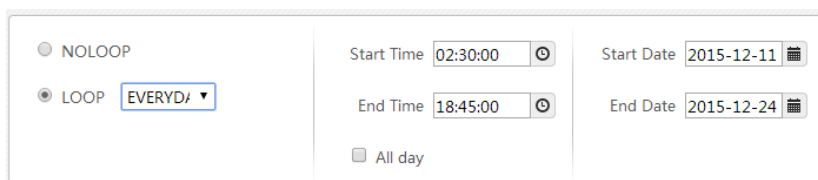
◆ Not loop: it means the playback time is from the start time of the start date to the end time of the end date.

For example: It means the playlist will play from Dec 11, 2015, at 2:30 to Dec 24, 2015, at 18:45.

◆ Loop every day.

Within the selected date, each day is fixed within a fixed time.

For example: Every day from Dec 11, 2015, at 2:30 to Dec 24, 2015, at 18:45.



NOLOOP

LOOP EVERYD

Start Time 02:30:00

End Time 18:45:00

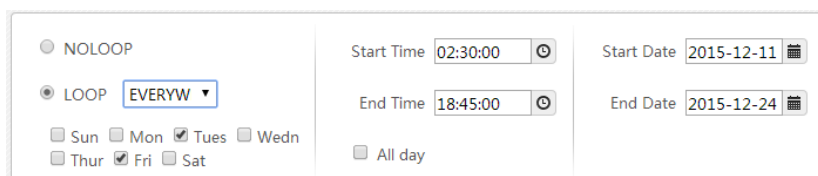
Start Date 2015-12-11

End Date 2015-12-24

All day

◆ Loop every week.

For example: The playlist will play from 2:30 to 18:45 every Tuesday and Friday from Dec 11, 2015 to Dec 24, 2015.



NOLOOP

LOOP EVERYW

Start Time 02:30:00

End Time 18:45:00

Start Date 2015-12-11

End Date 2015-12-24

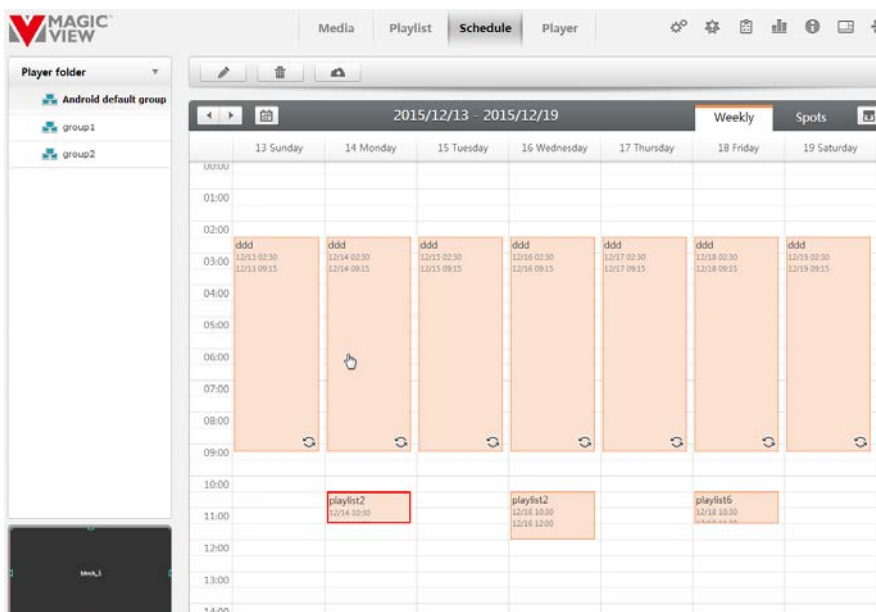
Sun Mon Tues Wedn


Thur Fri Sat

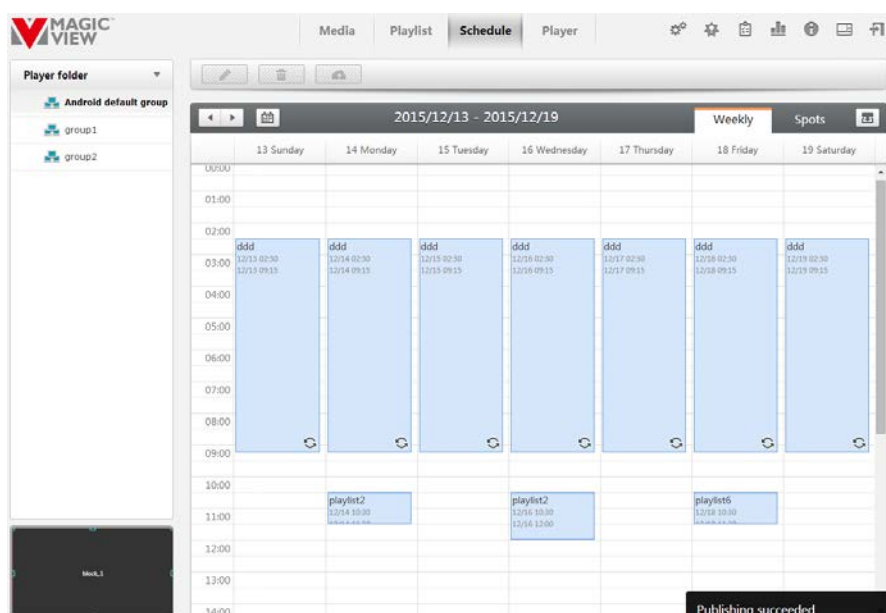
All day

There is a "G" identification of the schedule, which means that the program is a loop mode.

Step 4 : Select the playlist and define the schedule, then click the button "ok" to the main window of schedule.



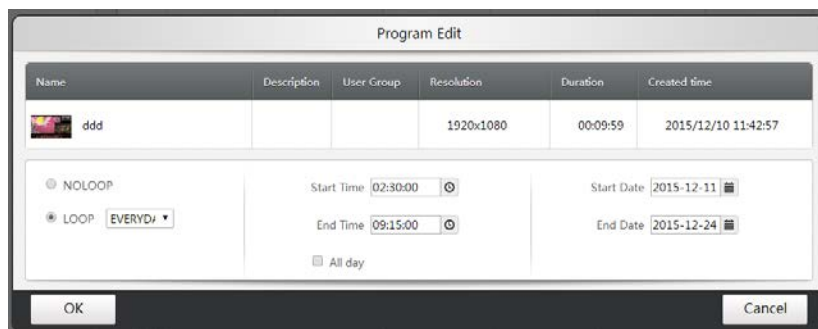
Step 5: Click the button  to publish the schedule. The color in the schedule block will be changed from orange to blue.



Modify the schedule

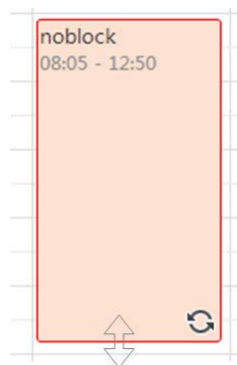
There are three ways to modify the schedule.



- I. First, select the schedule, then click the button , the following dialog box will pop up;

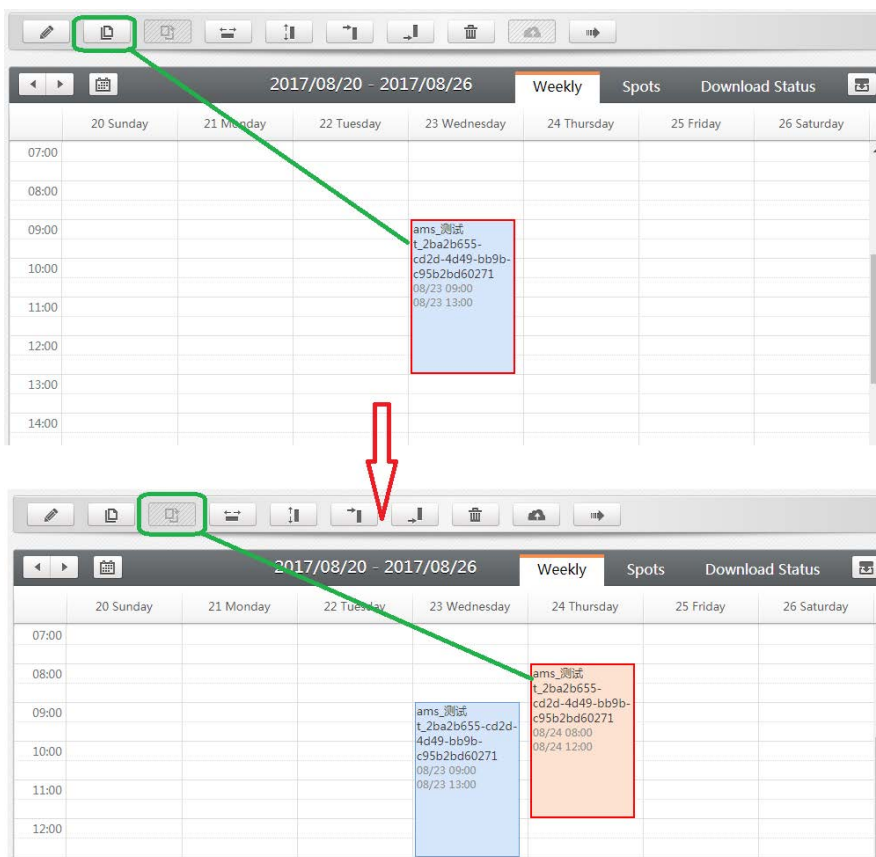



The way is common one. User can get the accurate schedule by redefining the start time, end time, start date, end date and loop mode.


2. Select the schedule, then hold the left mouse and drag the rectangle to modify the start time, end time, start date and end date. However, the loop mode and the whole playback time will stay.
3. Select the schedule, move the pointer over the top edge or bottom edge of the rectangle, it changes to a two-way arrow. Drag the two-way arrow to modify the start time or end time. However, the start date, end date and loop mode will stay, they cannot be modified.



4. Select the schedule, click  then set another duration, click  to copy:



5. Click     to modify schedule:

 : Horizontal copy. User can copy date and loop mode:

Horizontal copy

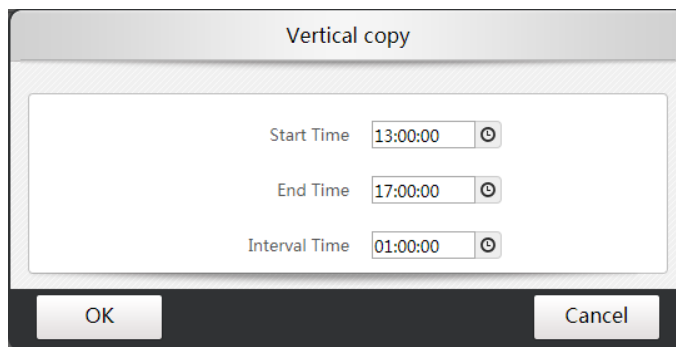
LOOP EVERYDA

Start Date 2017-08-24

End Date 2017-08-30

OK
Cancel

 : Vertical copy. User can copy start and end time.




Vertical copy


Start Time 13:00:00

End Time 17:00:00


Interval Time 01:00:00

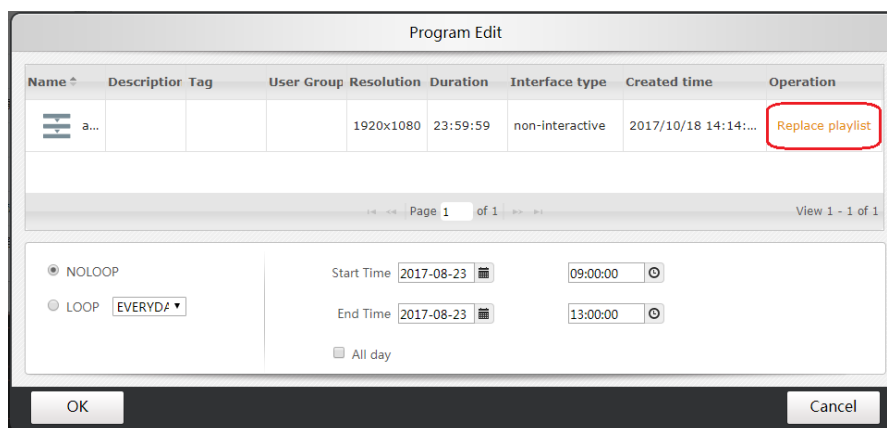
OK Cancel

 : Align to top. The start time is fixed to 0 a'clock. And can not change start/end date and interval time.


 : Align to bottom. The end time is fixed to 23:59. And can not change start/end date and interval time.

Replace the schedule

Step 1: Select a published playlist, click  :



Program Edit

Name	Descriptor	Tag	User Group	Resolution	Duration	Interface type	Created time	Operation
	a...			1920x1080	23:59:59	non-interactive	2017/10/18 14:14:...	Replace playlist

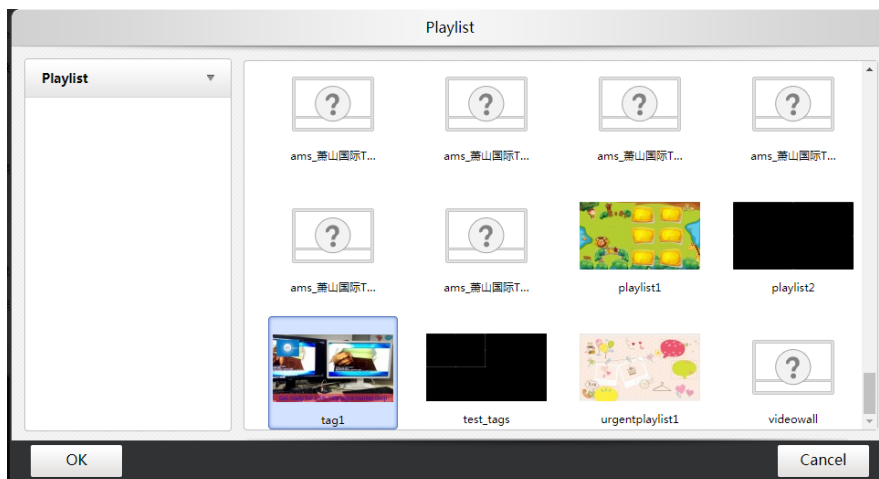
Page 1 of 1 View 1 - 1 of 1

NOLOOP
 LOOP EVERYD#

Start Time 2017-08-23 09:00:00
 End Time 2017-08-23 13:00:00
 All day

OK Cancel

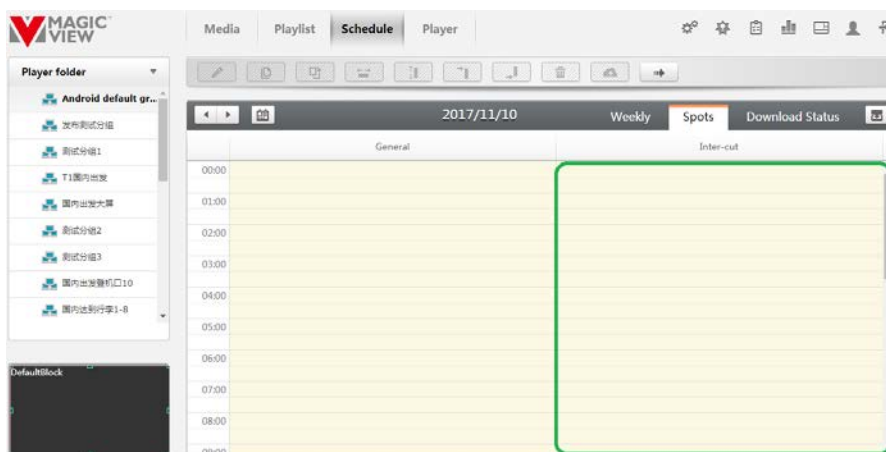
Step 2: Click **Replace playlist** to select another playlist:




Spots

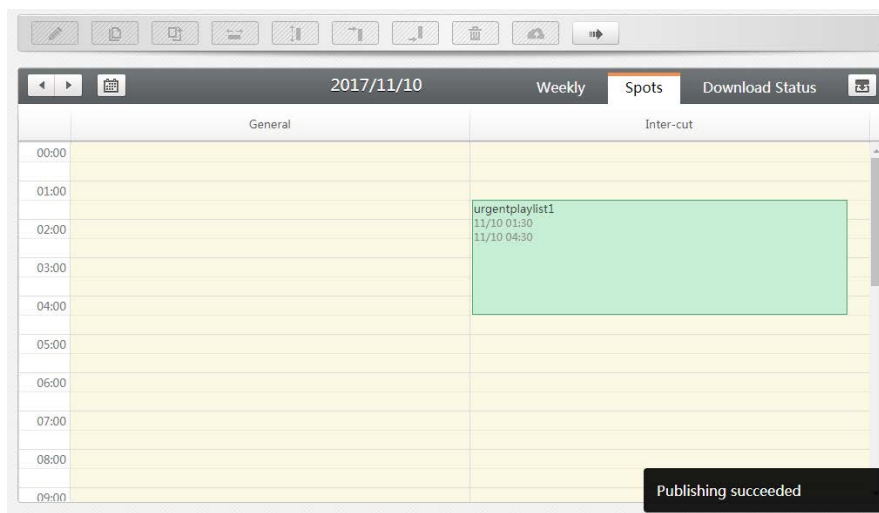
The priority of the spots is higher than scheduled playlist. At the same time, player will playback spot instead of schedule playlist.

Step 1 : Click the label “spots”;



Step 2 : Move the pointer to the calendar region. Press the right-button and drag the mouse, the following dialog box will pop up. Choose playlist and schedule.

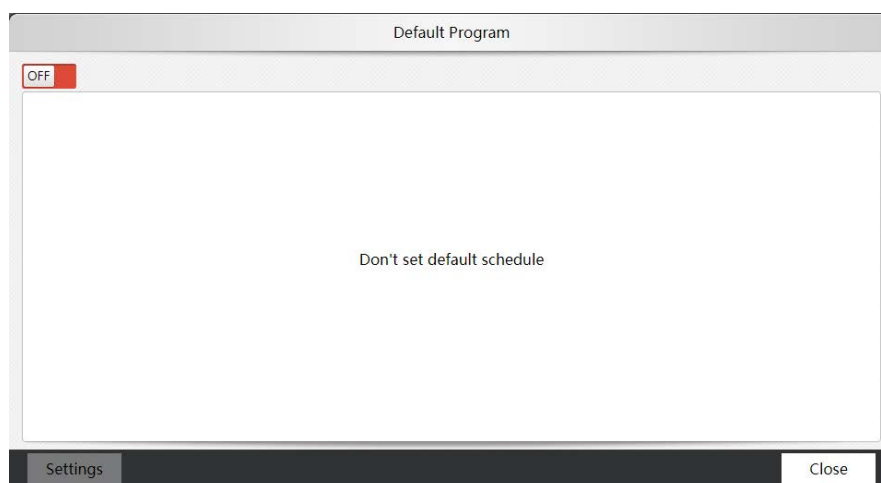
Step 3 : Click the button  to publish the project. The color in the project block will be changed from orange to blue.



Default playlist

The default program can be played in any idle period to avoid the status that player hasn't program to playback. And users need not define playlist's schedule and loop mode of the default program.


Step 1 : Click  to open the default program page.



Step 2 : Switch to , click **Settings** and select a playlist.

Publish Off-line Playlist

When player is off-line, users can download a playlist to USB disk and plug-in the player to playback.

Step 1 : At schedule page, click , then all the scheduled playlists will be downloaded to **downloads**

folder at local machine as the zip package. Such as C:\Documents and Settings\[user name]\My Documents\Downloads\mgv_offsch_default.zip.

Step 2 : Copy the zip package to the root directory of a USB disk.

Step 3 : Plug-in the sub disk to player. Player will load the zip package and auto playback according to the schedule.

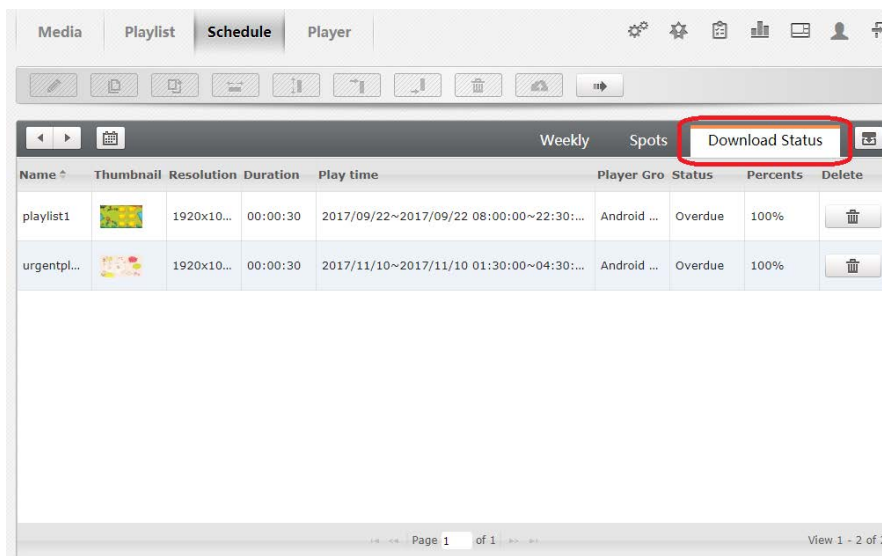


Playlist Download Status

Click [Download Status](#) to check the download processing of each playlist.

The table does not include urgent cases and preload playlists.

If the playlist's status is "preparing", it can not be deleted.



How to create a player group

Step 1 : Click the button , the following dialog box will pop up.

New Group

Name

Description

Type

Note:

1. There is a default group named android default group.
2. Once the player is successfully configured, it will be automatically added into the default group.

Create videowall group(Mainstreams)

If users want to combine the players as a videowall, please refer to **(Mainstreams) Combine VideWall**

Click  to revert to normal group.

Create Synchronized Group

This function implements sync-playing of multi players.

Select a player group, click .

Note :

1. Videowall group can not set to synchronized group.

Player/Player Group remote power management

Choose the players or player groups to set remote power management.



: Remote reboot;




: Remote shutdown;



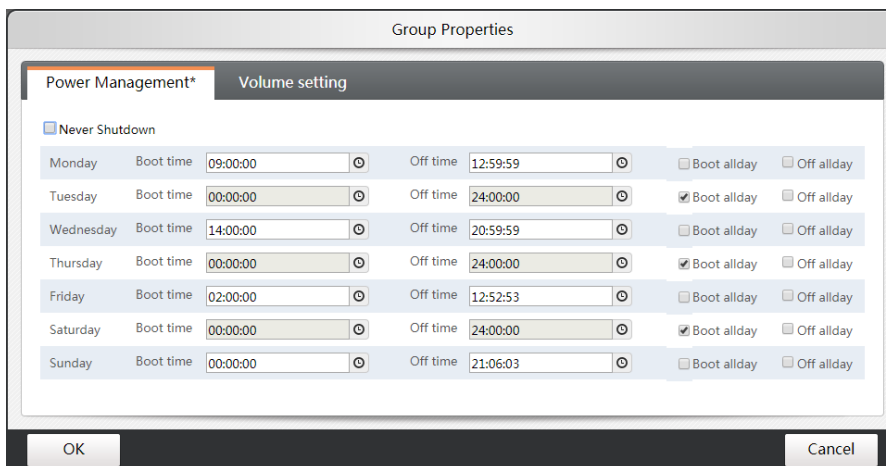
: WOL.

Player groups power on/off on schedule

Step 1 : Choose a player group:

Step 2 : Click , and set the boot/off time:

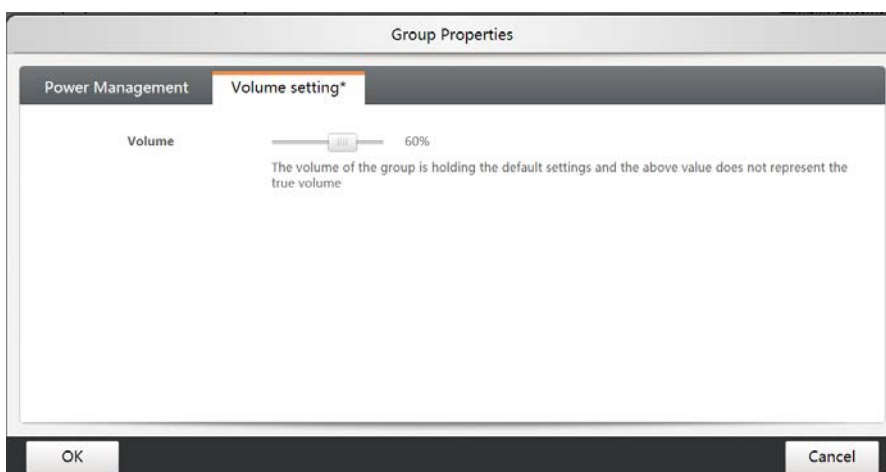
Step 3 : Edit power on/off time.



Volume Setting for Player Group

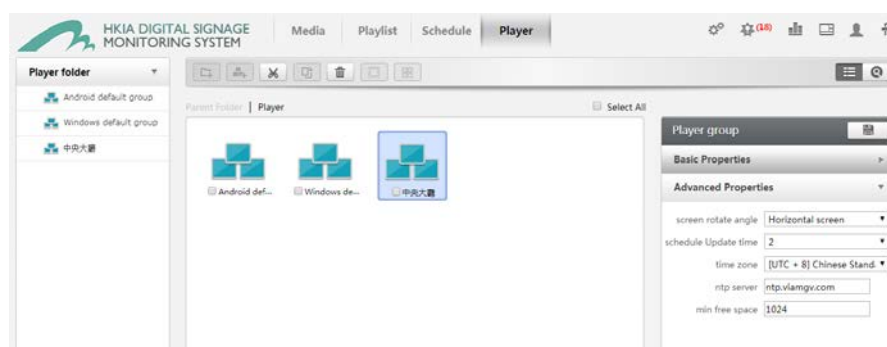
Step 1 : Select a player group;

Step 2 : Click  :




Player Groups' Advanced Properties

You can set more properties of group: screen rotation, time zone, ntp server and mini free space of player. Schedule update time: You can set the time of updating schedule in daily, e.g. Update schedule in 2:00 am in every day.





Click  to save.

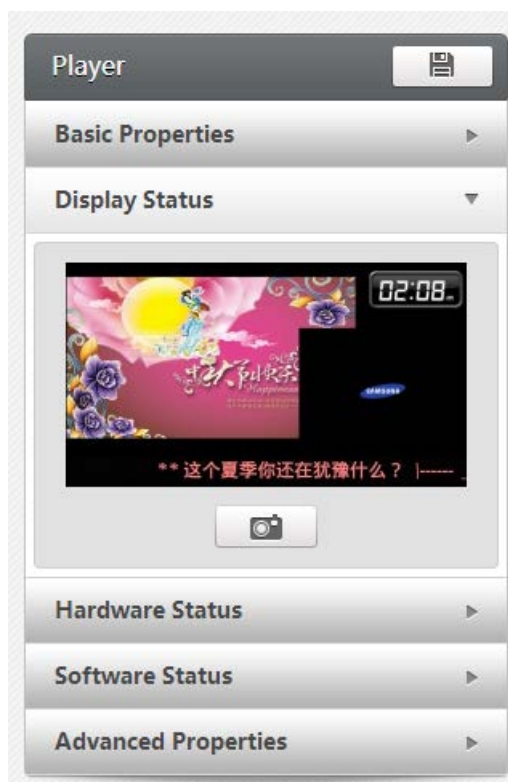
Player Basic Properties

User can modify player basic properties such as name, description and owner. Click  to save.

Screenshot

Step 1 : Choose the player:

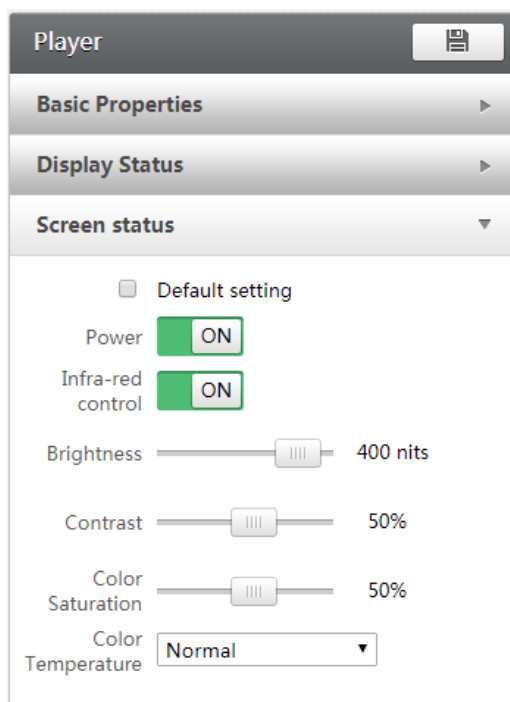
Step 2 : Click  label at right column, then click  to snapshot:



Screen Status

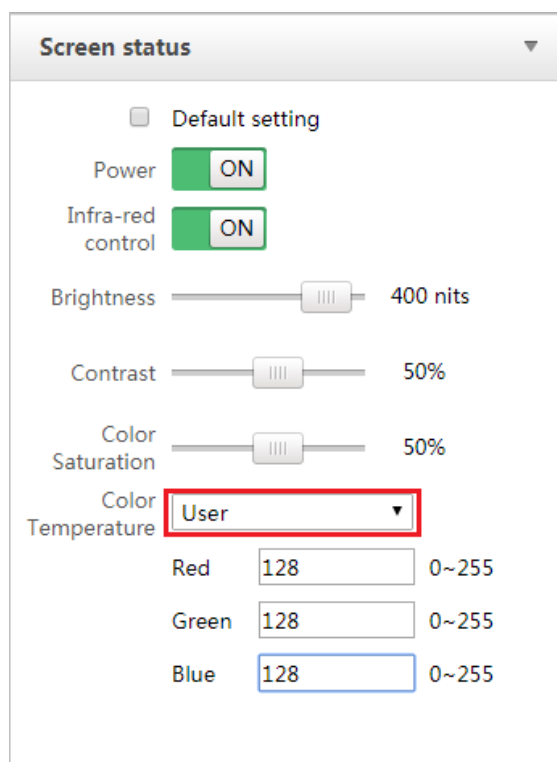
Step 1 : Choose the player:

Step 2 : Click  label at right column, then click  to snapshot:



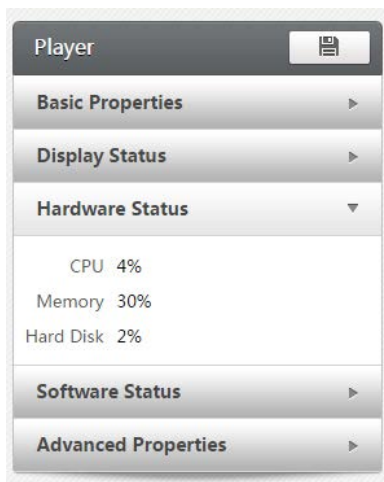
You can get/set screen brightness, contrast, color saturation and temperature, you can power on/off screen and disable/enable infra-red control.

For color temperature, you can set customized value:



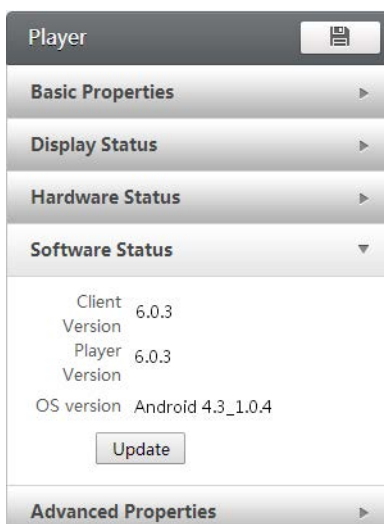
Check Hardware Status

Users can check the usage of player's CPU, memory and Hard Disk.



Check Software Status

Users can check player's client version, player version and OS version. If there is a new version of player software, users can upgrade it by pressing update button.



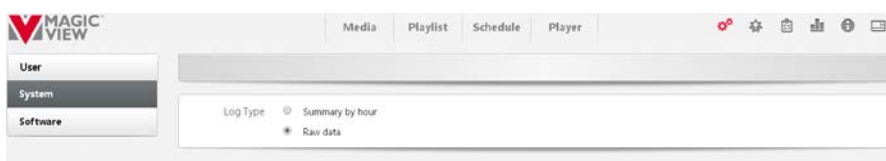
Check Advanced Properties

Player's advanced properties include:


- Mac address;
- Gateway;
- Mask;
- Command Server IP;
- Media Server IP.

System Setting

It sets log query type:



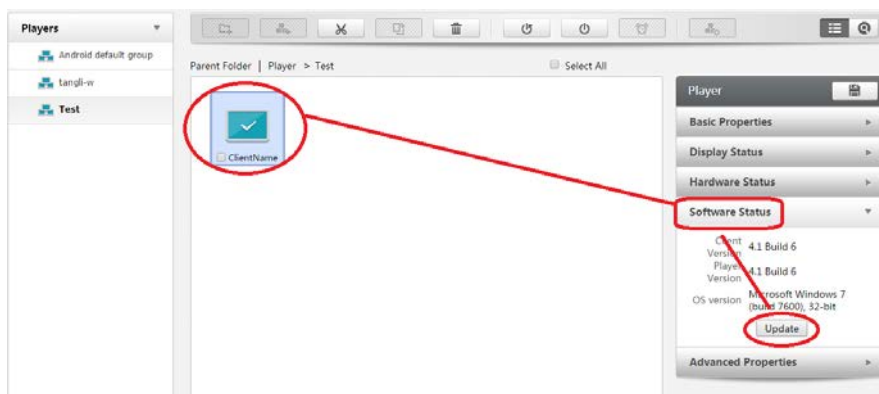
Update Players

Step 1 : Click the button  to open the window of system management.

Step 2 : Click the button  to upload the software package.




Step 3 : Select the players at Player Management Page to upgrade.

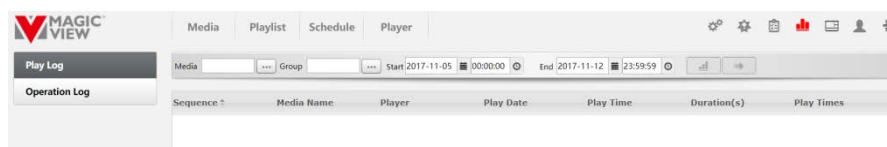


Log

The log includes player log and operation log.

Play log:

Click  to enter log page.



Choose the dedicate media file.

Choose player group.

Select start/end date and time.

Click  to check the search result.

MAGIC VIEW

Media Playlist Schedule Player

Play Log

WeddingBanq... Group Android defa... Start:2015-12-04 00:00:00 End:2015-12-11 23:59:59

Sequence	Media Name	Player	Play Date	Play Time	Duration(s)	Play Times
1	WeddingBanq...	8880	2015/12/10	14:34:17	30	1
2	WeddingBanq...	8880	2015/12/10	14:34:47	30	1
3	WeddingBanq...	8880	2015/12/10	14:35:17	30	1
4	WeddingBanq...	8880	2015/12/10	14:35:47	30	1
5	WeddingBanq...	8880	2015/12/10	14:36:17	30	1
6	WeddingBanq...	8880	2015/12/10	14:36:47	30	1
7	WeddingBanq...	8880	2015/12/10	14:37:17	30	1
8	WeddingBanq...	8880	2015/12/10	14:37:47	30	1
9	WeddingBanq...	8880	2015/12/10	14:38:17	30	1
10	WeddingBanq...	8880	2015/12/10	14:38:47	30	1
11	WeddingBanq...	8880	2015/12/10	14:39:17	30	1
12	WeddingBanq...	8880	2015/12/10	14:39:47	30	1
13	WeddingBanq...	8880	2015/12/10	14:40:17	30	1
14	WeddingBanq...	8880	2015/12/10	14:40:47	30	1
15	WeddingBanq...	8880	2015/12/10	14:41:17	30	1
16	WeddingBanq...	8880	2015/12/10	14:41:47	30	1
17	WeddingBanq...	8880	2015/12/10	14:42:17	30	1

Search success!

Click to export the results to the excel table.

Operation log:

Select user, start/end date and time, click to check the result.


序號	用戶	登錄IP	操作時間	操作	參數
15	rachelxu@viate...	127.0.0.1	2017/03/07 16:34:48	註冊SAAS播放機	{"name":"player2","hardware_id":"2","description":"player2","w...
16	rachelxu@viate...	127.0.0.1	2017/03/07 16:34:56	註冊SAAS播放機	{"name":"player3","hardware_id":"3","description":"player3","w...
17	rachelxu@viate...	127.0.0.1	2017/03/07 16:35:04	註冊SAAS播放機	{"name":"player4","hardware_id":"4","description":"player4","w...
18	rachelxu@viate...	127.0.0.1	2017/03/07 16:38:38	註冊SAAS播放機	{"name":"player5","hardware_id":"5","description":"player5","w...
19	rachelxu@viate...	127.0.0.1	2017/03/07 16:38:46	註冊SAAS播放機	{"name":"player6","hardware_id":"6","description":"player6","w...
20	rachelxu@viate...	127.0.0.1	2017/03/07 17:03:14	創建播放機群組	{"group_name":"videowall","group_desc":"videowall","os_type":...
21	rachelxu@viate...	127.0.0.1	2017/03/08 13:24:04	移動播放機群組	{"client_info_array":[{"id":105,"name":"player1"},{"id":106,"na...
22	rachelxu@viate...	127.0.0.1	2017/03/08 13:24:34	編輯SOC分組的信息	{"id_name":{"id":42,"name":"videowall"},"req":{"client_group_j...
23	rachelxu@viate...	127.0.0.1	2017/03/08 13:24:48	編輯SOC分組的信息	{"id_name":{"id":42,"name":"videowall"},"req":{"client_group_j...
24	rachelxu@viate...	127.0.0.1	2017/03/08 17:36:30	註冊SAAS播放機	{"name":"wp1","hardware_id":"wp1","description":"wp1","w":19...
25	rachelxu@viate...	127.0.0.1	2017/03/09 09:09:23	增加用戶組	{"name":"general users","description":"general users"}
26	rachelxu@viate...	127.0.0.1	2017/03/09 09:14:24	新增角色	{"info":{"name":"user@VIAP.com","desc":"user@VIAP.com","pri...
27	rachelxu@viate...	127.0.0.1	2017/03/09 09:14:24	新增用戶	{"name":"user@VIAP.com","desc":"user@VIAP.com","admin_info":{"role_id_arra...
28	rachelxu@viate...	127.0.0.1	2017/03/09 09:27:45	新增升級包	{"setup_file":{"name":"ClientSetup.msi","description":"ClientSetup.msi","file_ty...

Urgent Case

When there is an urgent need to broadcast in time, user can use the function of emergency information. Once publishing, it will playback immediately.


Step I : Click enter the urgent case publish page.



Step 2 : Choose a playlist from the table or click  to open playlist table to add.

Step 3 : Choose an urgent case, click  to publish. Choose a player group or groups and click ok.

 : Stop to playback urgent case.

 : Delete urgent case from table. User can not delete the case which is playing.

BIOS Setup

Introduction

The BIOS (Basic Input/Output System) installed in the ROM of your computer system supports Intel® processors. The BIOS provides critical low-level support for standard devices such as disk drives, serial ports and parallel ports. It also provides password protection as well as special support for detailed fine-tuning of the chipset controlling the entire system.

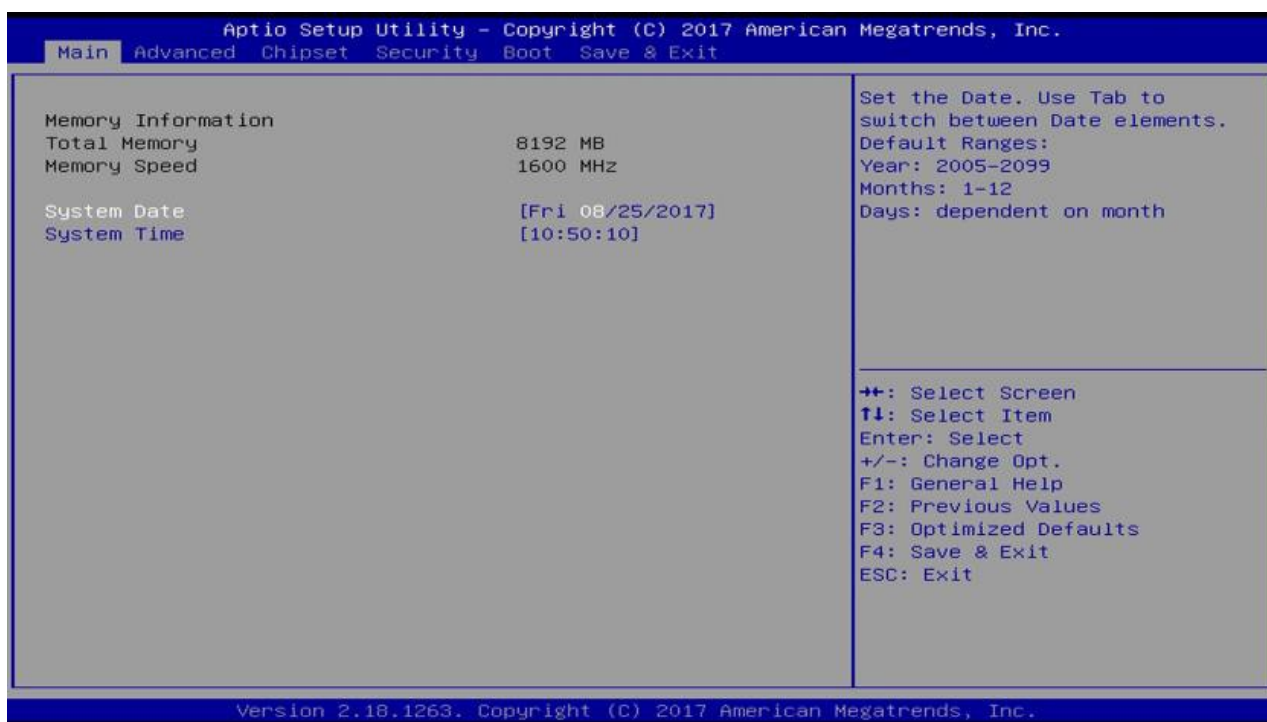
BIOS Setup

The BIOS provides a Setup utility program for specifying the system configurations and settings. The BIOS ROM of the system stores the Setup utility. When you turn on the computer, the BIOS is immediately activated. Press the key immediately allows you to enter the Setup utility.

BIOS default password : [DS@HCAA](#)

Warning: It is strongly recommended that you avoid making any changes to the defaults.

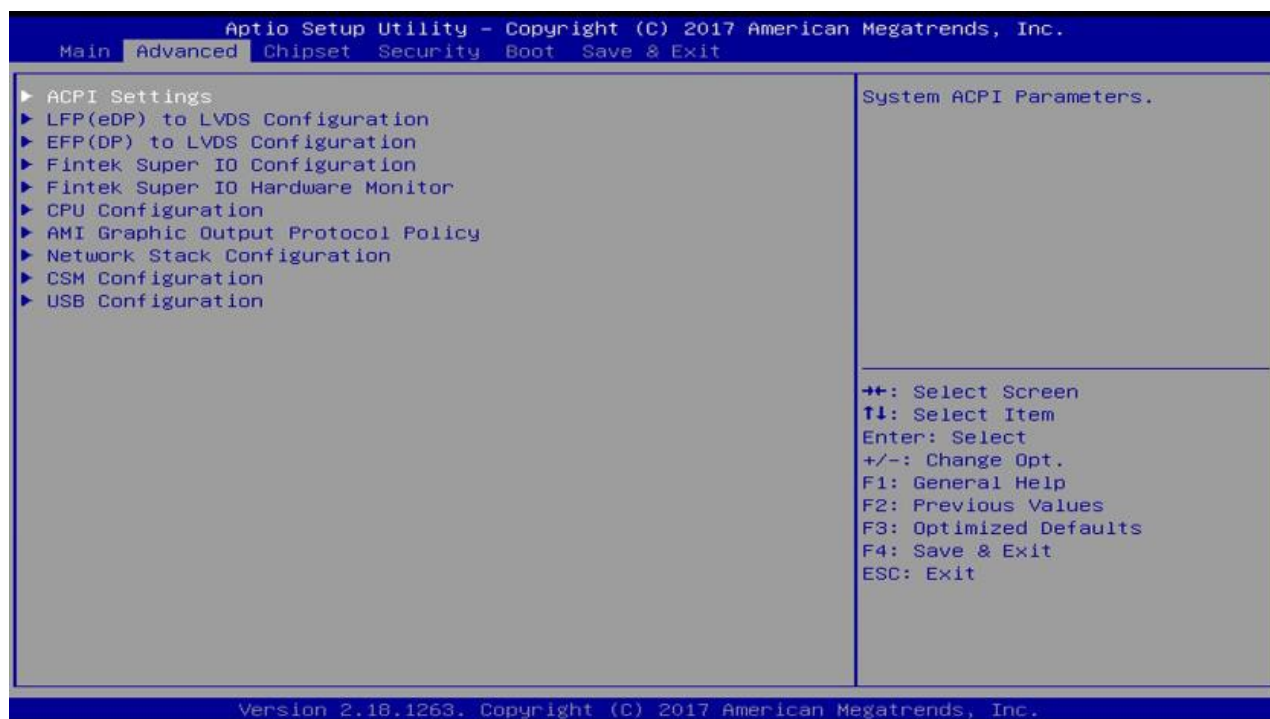
Main Settings



BIOS Setting	Description
System Date	Sets the date. Use the <Tab> key to switch between the data elements.
System Time	Set the time. Use the <Tab> key to switch between the data elements.

Advanced Settings

This section allows you to configure, improve your system and allows you to set up some system features according to your preference.

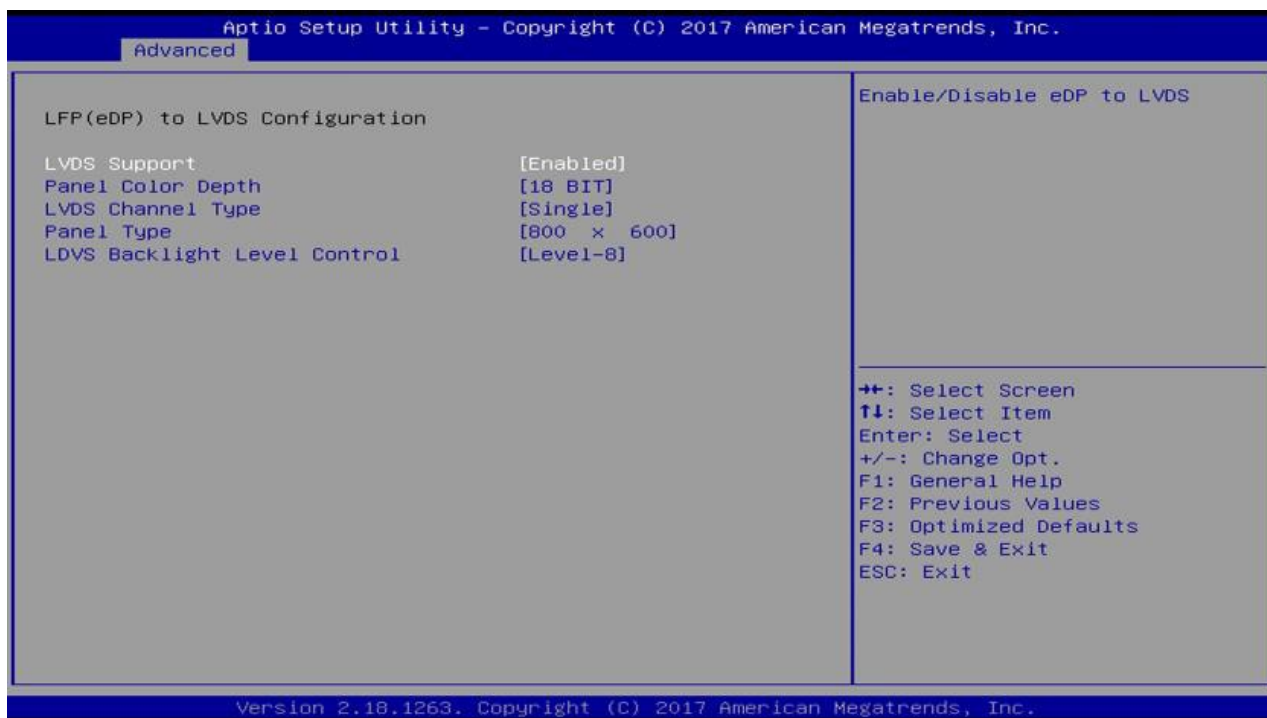


ACPI Computing



BIOS Setting	Description
Enable Hibernation	Enables / Disables the system ability to hibernate (OS/S4 Sleep State). This option may be not effective with some OS.
ACPI Sleep State	Selects an ACPI sleep state (Suspend Disabled or S3) where the system will enter when the Suspend button is pressed.

LFP (eDP) to LVDS Configuration



BIOS Setting	Description
LVDS Support	Enables / Disables eDP to LVDS.
Panel Color Depth	Selects a panel color depth as 18 or 24 (VESA or JEIDA) bit.
LVDS Channel Type	Sets the LVDS channel type as single or dual channel.
Panel Type	Selects a resolution that fits your panel. Options: 800 x 600 / 1024 x 768 / 1280 x 1024 / 1366 x 768 / 1440 x 900 / 1600 x 900 / 1920 x 1080
LVDS Backlight Level Control	Selects from Level 1 to Level 8 for the LVDS backlight.

EFP (DP) to LVDS Configuration



BIOS Setting	Description
LVDS Support	Enables / Disables DP to LVDS.
Panel Color Depth	Selects a panel color depth as 18 or 24 (VESA or JEIDA) bit.
LVDS Channel Type	Sets the LVDS channel type as single or dual channel.
Panel Type	Selects a resolution that fits your panel. Options: 800 x 600 / 1024 x 768 / 1280 x 1024 / 1366 x 768 / 1440 x 900 / 1600 x 900 / 1920 x 1080
LVDS Backlight Level Control	Selects from Level 1 to Level 8 for the LVDS backlight.

Fintek Super IO Configuration



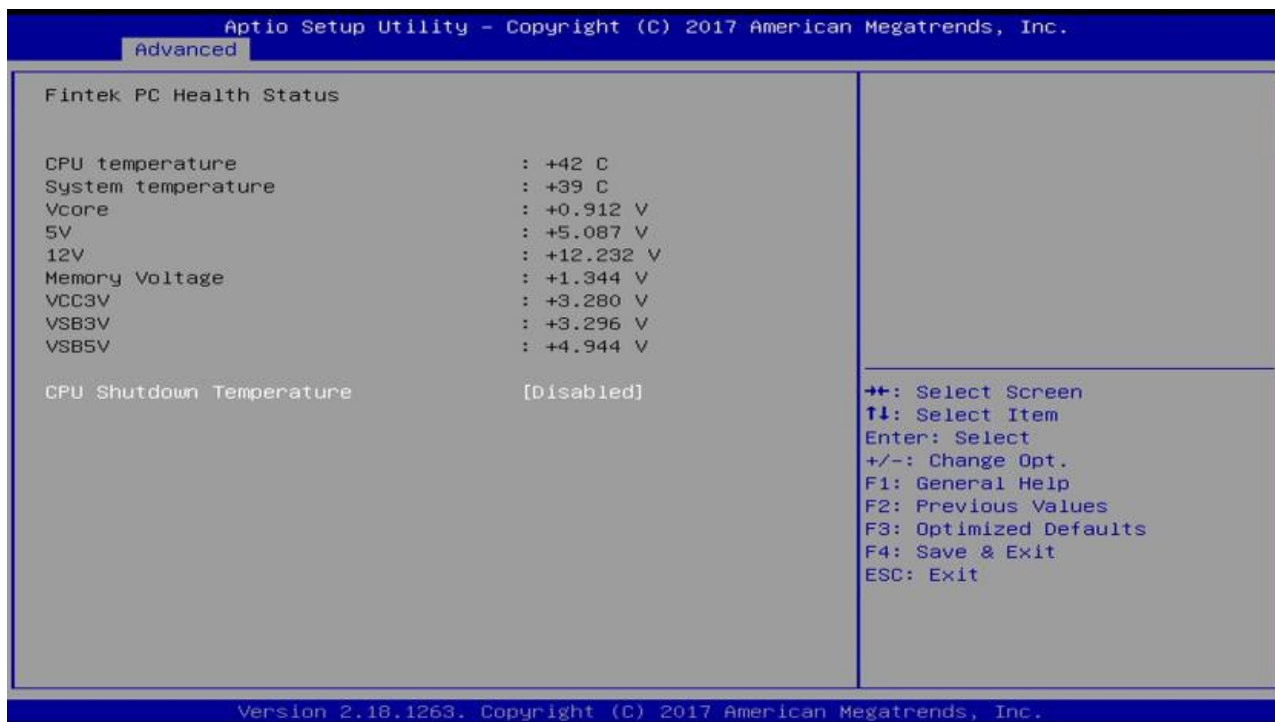
BIOS Setting	Description
Standby Power on S5 (ERP)	Enable the item to provide the standby power for devices. Disable the item to shut down the standby power. Options: All Enable / Enable Ethernet for WOL / All Disable
Serial Ports Configuration	Sets parameters of serial ports. Enables / Disables the serial port and select an optimal setting for the Super IO device.

Serial Port 1 Configuration



BIOS Setting	Description
Serial Port	Enables / Disables the serial port.
Change Settings	Selects an optimal settings for Super IO device.
Device Mode	Changes the serial port mode to: RS232 RS485 TX Low Active RS485 with Termination TX Low Active RS422 RS422 with Termination

Fintek Super IO Hardware Monitor



BIOS Setting	Description
Temperatures / Voltages	These fields are the parameters of the hardware monitoring function feature of the motherboard. The values are read-only values as monitored by the system and show the PC health status.
CPU Shutdown Temperature	Sets a threshold of temperature to shut down if CPU goes overheated. Options: Disabled / 70 °C / 75 °C / 80 °C / 85 °C / 90 °C / 95 °C

CPU Configuration



BIOS Setting	Description
Socket 0 CPU Information	Displays the socket specific CPU information.
CPU Power Management	Allows you to enable / disable Turbo Mode.
Active Processor Cores	Enables / Disables the cores in the processor package.
Monitor Mwait	Enables / Disables Monitor Mwait.

Socket 0 CPU Information

Aptio Setup Utility - Copyright (C) 2017 American Megatrends, Inc.

Advanced

Socket 0 CPU Information	
Intel(R) Atom(TM) Processor E3950 @ 1.60GHz	
CPU Signature	506C9
Microcode Patch	28
Processor Cores	4
Intel HT Technology	Not Supported
Intel VT-x Technology	Supported

++: Select Screen
 ↑↓: Select Item
 Enter: Select
 +/-: Change Opt.
 F1: General Help
 F2: Previous Values
 F3: Optimized Defaults
 F4: Save & Exit
 ESC: Exit

Version 2.18.1263. Copyright (C) 2017 American Megatrends, Inc.

CPU Power Management Configuration

Aptio Setup Utility - Copyright (C) 2017 American Megatrends, Inc.

Advanced

CPU Power Management Configuration	
Turbo Mode	[Disabled]

Turbo Mode.

++: Select Screen
 ↑↓: Select Item
 Enter: Select
 +/-: Change Opt.
 F1: General Help
 F2: Previous Values
 F3: Optimized Defaults
 F4: Save & Exit
 ESC: Exit

Version 2.18.1263. Copyright (C) 2017 American Megatrends, Inc.

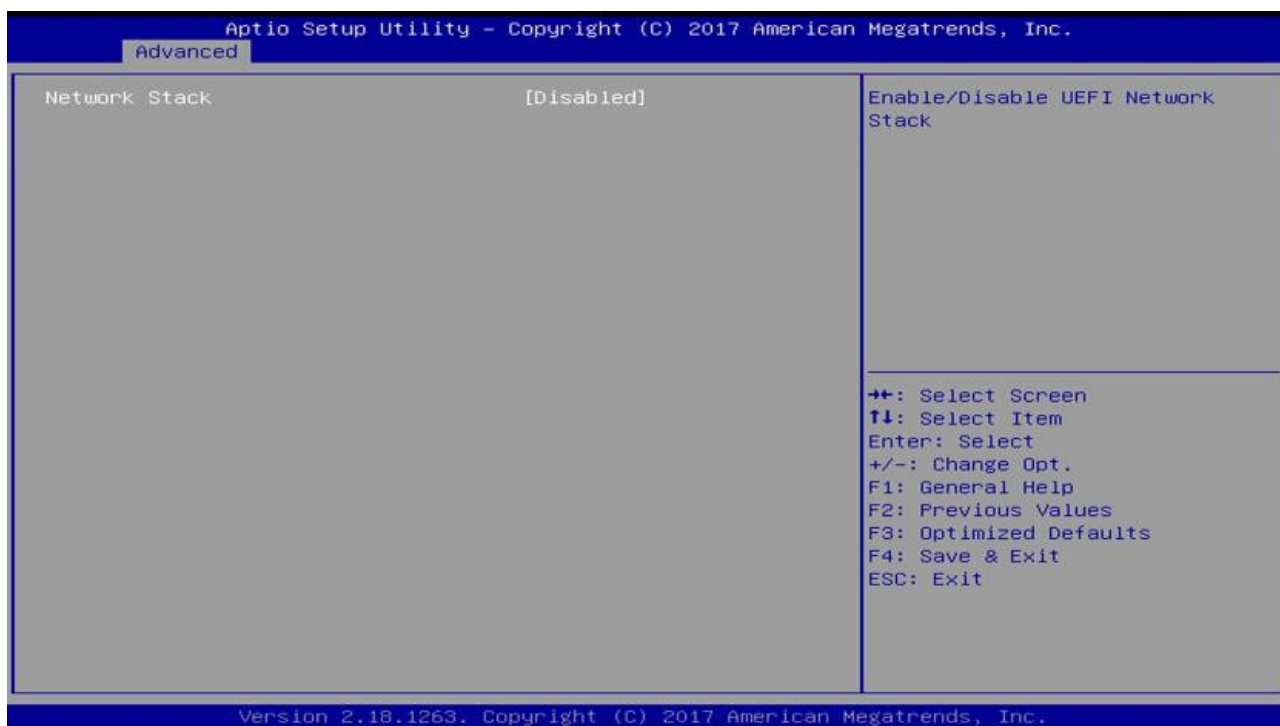
BIOS Setting	Description
Turbo Mode	Enables / Disables the turbo mode.

AMI Graphic Output Protocol Policy



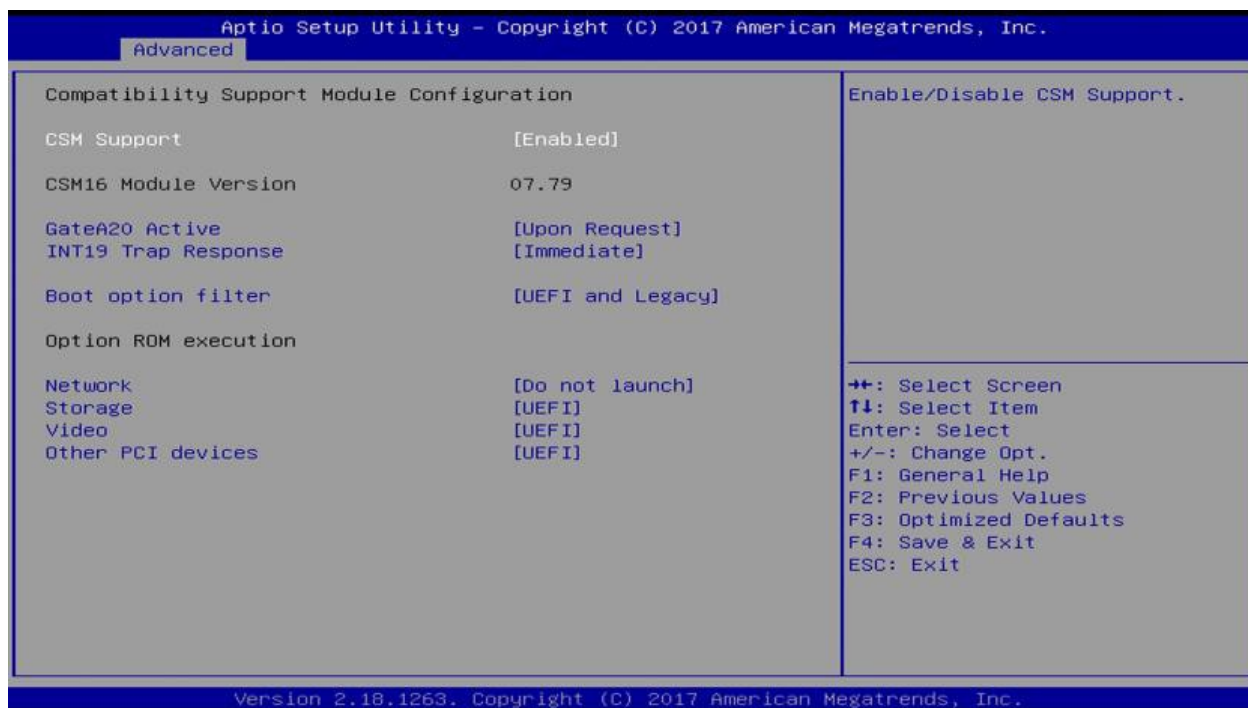
BIOS Setting	Description
Output Select	Outputs through HDMI interface.

Network Stack Configuration



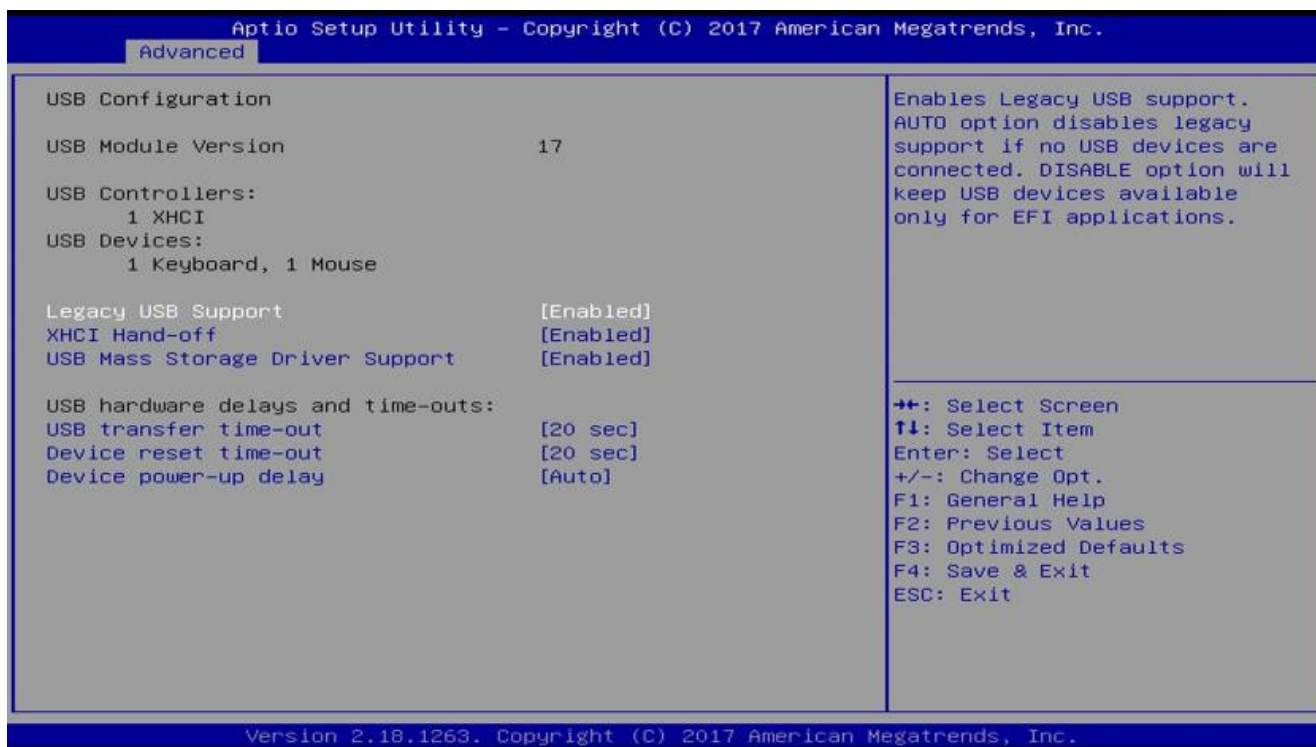
BIOS Setting	Description
Network Stack	Enables / Disables UEFI Network Stack.
IPv4 PXE Support	Enables / Disables IPv4 PXE Boot Support. If disabled, Ipv4 PXE boot option will not be created.
IPv4 HTTP Support	Enables / Disables IPv4 HTTP Boot Support. If disabled, Ipv4 HTTP boot option will not be created.
IPv6 PXE Support	Enables / Disables IPv6 PXE Boot Support. If disabled, Ipv4 PXE boot option will not be created.
IPv6 HTTP Support	Enables / Disables IPv6 HTTP Boot Support. If disabled, Ipv4 HTTP boot option will not be created.
PXE boot wait time	Assigns a period of time to press ESC key to abort the PXE boot.
Media detect count	Assigns a number of times to check the presence of media.

CSM Configuration



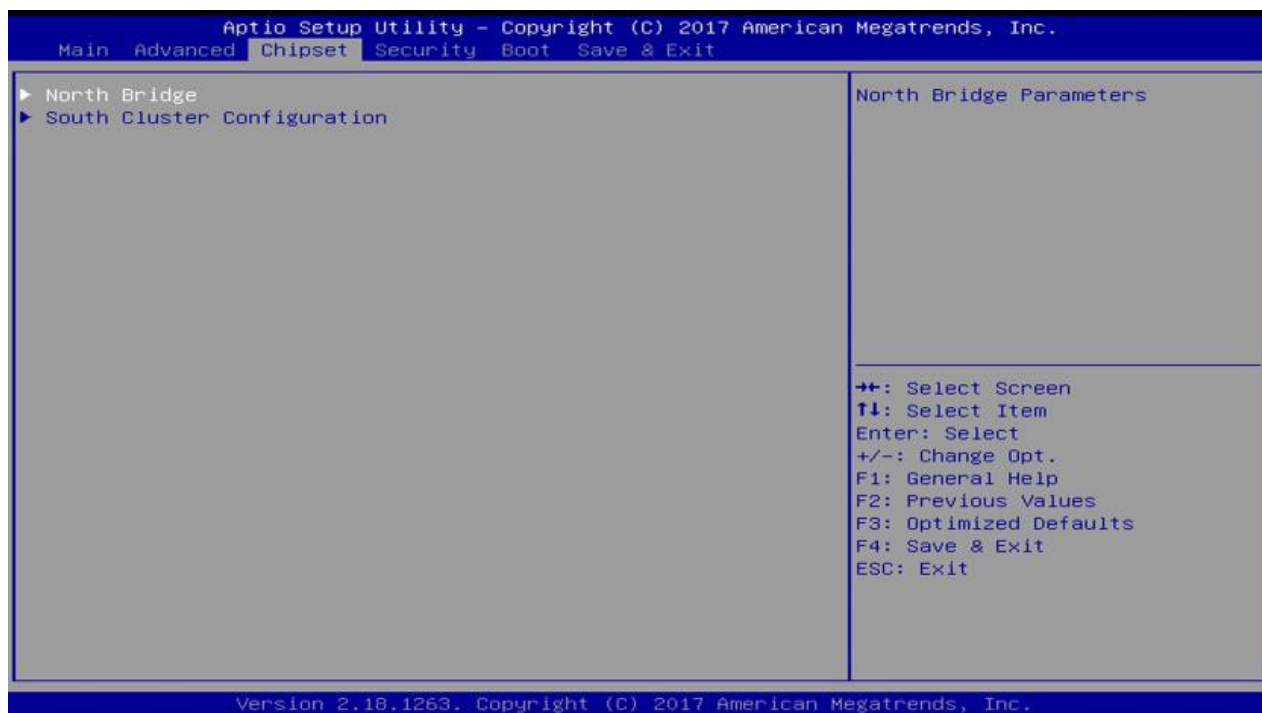
BIOS Setting	Description
CSM Support	Enables / Disables CSM support.
GateA20 Active	Upon Request disables GA20 when using BIOS services. Always cannot disable GA20, but is useful when any RT code is executed above 1 MB.
INT19 Trap Response	Sets how BIOS reacts on INT19 trap by Option ROM. Immediate executes the trap right away. Postponed executes the trap during legacy boot.
Boot option filter	Controls the priority of Legacy and UEFI ROMs.
Network	Controls the execution of UEFI and Legacy PXE OpROM.
Storage	Controls the execution of UEFI and Legacy Storage OpROM.
Video	Controls the execution of UEFI and Legacy Video OpROM.
Other PCI devices	Determines OpROM execution policy for devices other than network, storage or video.

USB Configuration



BIOS Setting	Description
Legacy USB Support	Enabled enables Legacy USB support. Auto disables legacy support if there is no USB device connected. Disabled keeps USB devices available only for EFI applications.
XHCI Hand-off	This is a workaround for OSes without XHCI hand-off support. The XHCI ownership change should be claimed by XHCI driver.
USB Mass Storage Driver Support	Enables / Disables the support for USB mass storage driver.
USB Transfer time-out	The time-out value (1 / 5 10 / 20 secs) for Control, Bulk, and Interrupt transfers.
Device reset time-out	Gives seconds (10 / 20 / 30 / 40 secs) to delay execution of Start Unit command to USB mass storage device.
Device power-up delay	The maximum time the device will take before it properly reports itself to the Host Controller. Auto uses default value for a Root port it is 100ms. But for a Hub port, the delay is taken from Hub descriptor.

Chipset Settings

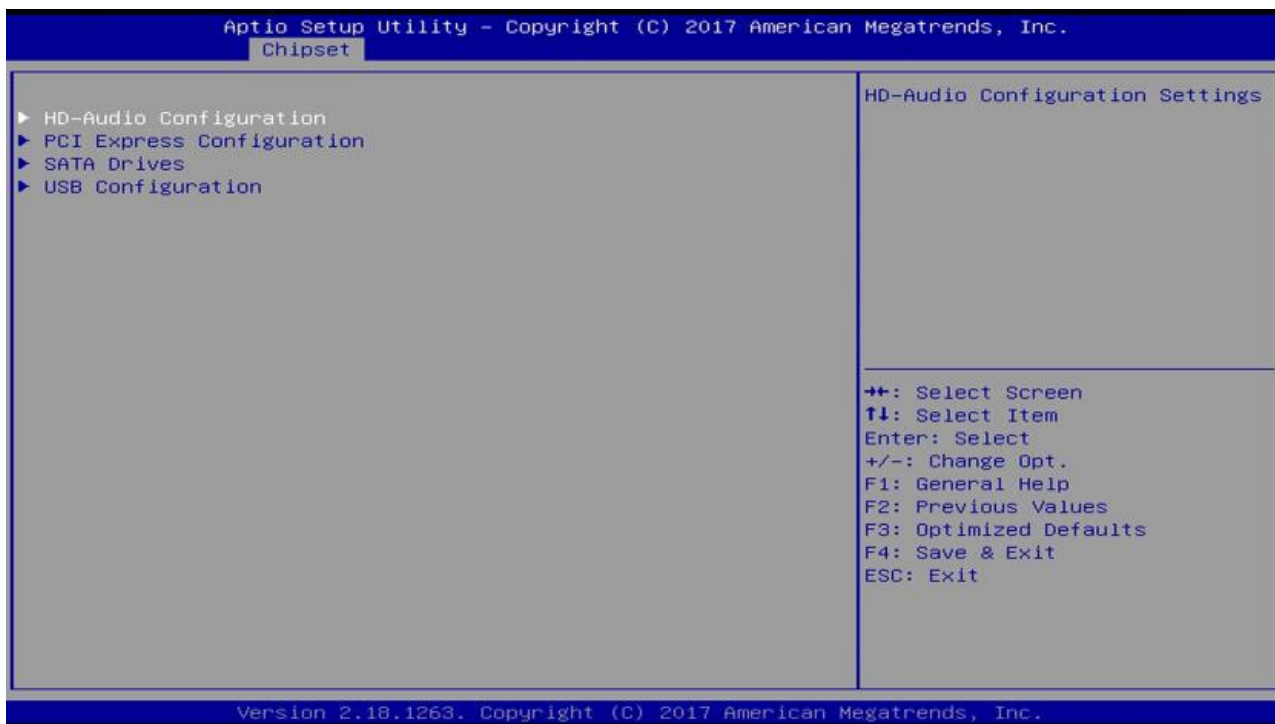


North Bridge



BIOS Setting	Description
Max TOLUD	Sets a maximum value of TOLUD.

South Cluster Configuration



HD Audio Configuration



BIOS Setting	Description
HD-Audio Support	Enables / Disables HD-Audio support.

PCI Express Configuration

Aptio Setup Utility - Copyright (C) 2017 American Megatrends, Inc.

Chipset

<pre> PCI Express Configuration ▶ PCI Express Root Port 1 ▶ PCI Express Root Port 2 ▶ PCI Express Root Port 3 ▶ PCI Express Root Port 4 ▶ PCI Express Root Port 5 ▶ PCI Express Root Port 6 </pre>	<p>Control the PCI Express Root Port.</p> <p>AUTO: To disable unused root port automatically for the most optimum power savings.</p> <p>Enable: Enable PCIe root port Disable: Disable PCIe root port</p> <hr/> <p> ⇐⇐: Select Screen ↑↓: Select Item Enter: Select +/-: Change Opt. F1: General Help F2: Previous Values F3: Optimized Defaults F4: Save & Exit ESC: Exit </p>
--	---

Version 2.18.1263. Copyright (C) 2017 American Megatrends, Inc.

BIOS Setting	Description
PCI Express Root Port 1 ~ 6	Accesses the control of the PCI Express Root Port.

Aptio Setup Utility - Copyright (C) 2017 American Megatrends, Inc.

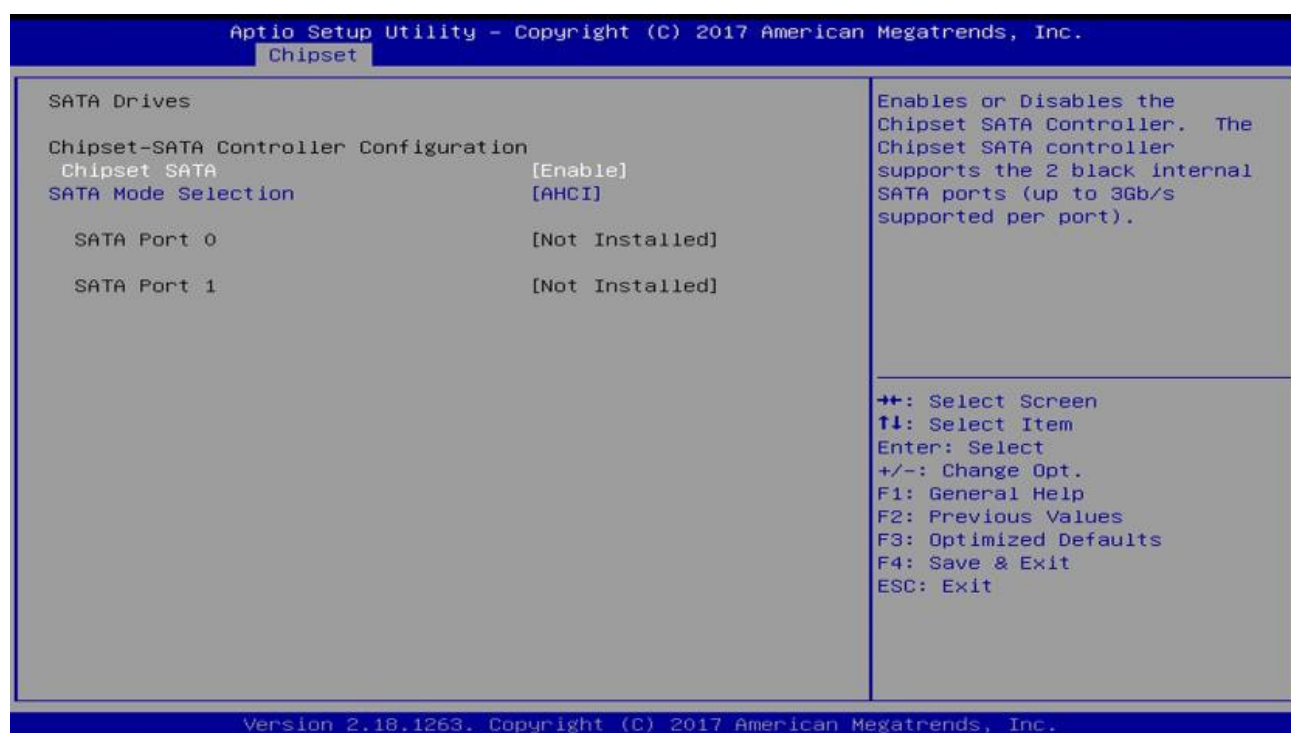
Chipset

<pre> PCI Express Root Port 1 [Enable] If DISABLED, goto ENABLE first the ASPM [Disable] L1 Substates [Disabled] PME SCI [Disable] PCIe Speed [Auto] </pre>	<p>Control the PCI Express Root Port.</p> <p>AUTO: To disable unused root port automatically for the most optimum power savings.</p> <p>Enable: Enable PCIe root port Disable: Disable PCIe root port</p> <hr/> <p> ⇐⇐: Select Screen ↑↓: Select Item Enter: Select +/-: Change Opt. F1: General Help F2: Previous Values F3: Optimized Defaults F4: Save & Exit ESC: Exit </p>
--	---

Version 2.18.1263. Copyright (C) 2017 American Megatrends, Inc.

BIOS Setting	Description
PCI Express Root Port	Enables/ Disables the PCIe root port.
ASPM	Auto allows you to disable unused root port automatically for the most optimum power savings.
LI Substates	Sets the PCIe active state power management. Options: Disable / L0s / L1 / L0SL1 / Auto
PME SCI	Sets PCIe L1 substates. Options: Disables / L1.1 / L1.2 / L1.1 & L1.2
PCIe Speed	Enables / Disables PME SCI.
	Configures the PCIe speed. Options: Auto, Gen1, Gen2

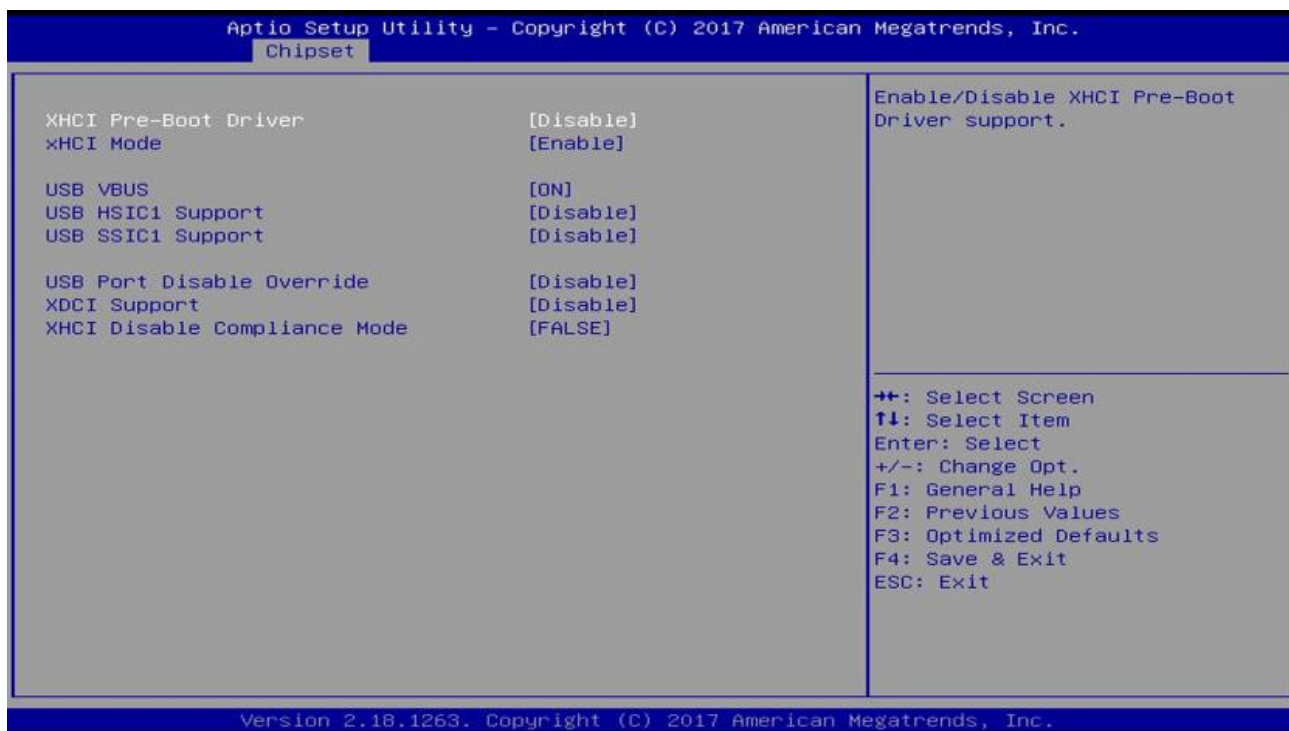
SATA Drivers



The screenshot shows the Aptio Setup Utility interface. At the top, it says "Aptio Setup Utility - Copyright (C) 2017 American Megatrends, Inc." and "Chipset" is selected. The main area is divided into two columns. The left column shows the "SATA Drives" section with "Chipset-SATA Controller Configuration" set to "[Enable]", "SATA Mode Selection" set to "[AHCI]", and two SATA ports listed as "[Not Installed]". The right column contains a detailed description: "Enables or Disables the Chipset SATA Controller. The Chipset SATA controller supports the 2 black internal SATA ports (up to 3Gb/s supported per port)." Below this is a legend for navigation keys: "++: Select Screen", "↑↓: Select Item", "Enter: Select", "+/-: Change Opt.", "F1: General Help", "F2: Previous Values", "F3: Optimized Defaults", "F4: Save & Exit", and "ESC: Exit". At the bottom, it says "Version 2.18.1263. Copyright (C) 2017 American Megatrends, Inc."

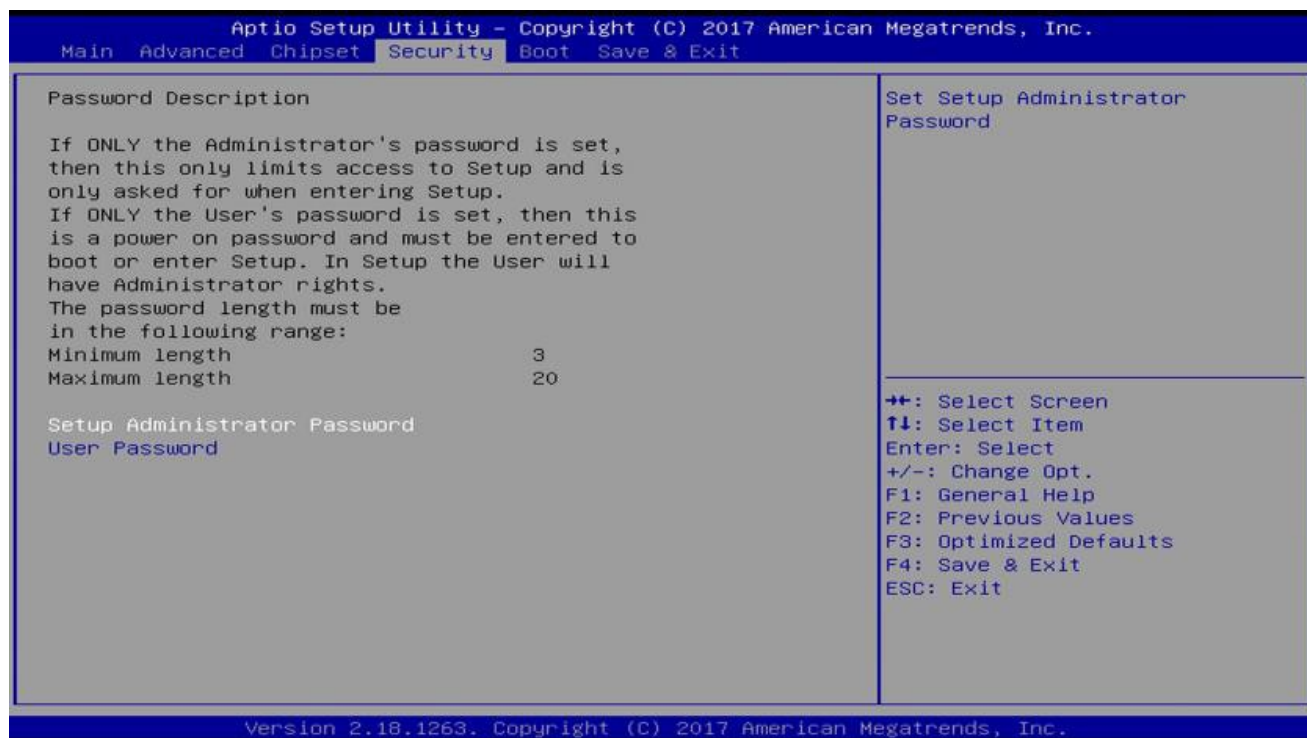
BIOS Setting	Description
Chipset SATA	Enables / Disables the Chipset SATA Controller. The Chipset SATA Controller supports the 2 black internal SATA ports (up to 3Gb/s supported per port).
SATA Mode Selection	Determines how SATA controller(s) operate.

USB Configuration



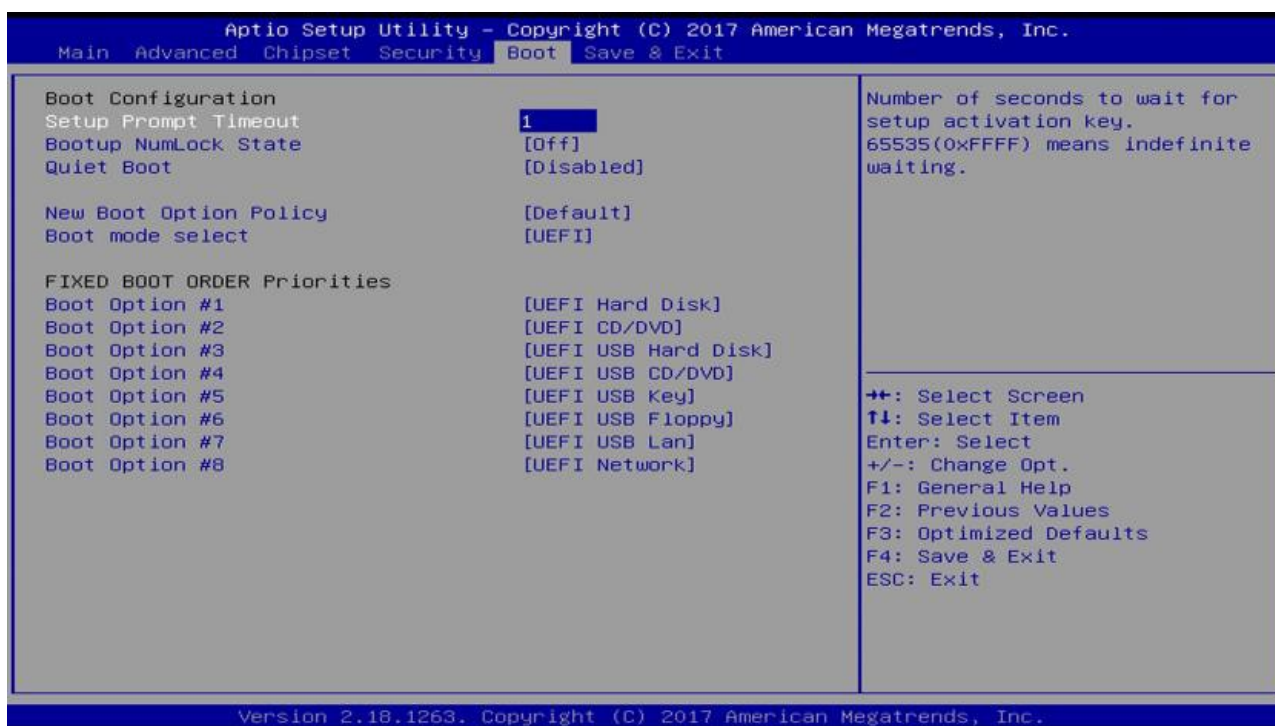
BIOS Setting	Description
XHCI Pre-Boot Driver	Enables / Disables the support for XHCI Pre-Boot Driver.
XHCI Mode	Enables / Disables XHCI mode. If disabled, XHCI controller would be disabled, and none of the USB devices are detectable or usable when system is booted up in OS. Do NOT disable it unless for debug purpose.
USB VBUS	VBUS should be ON in HOST mode. It should be OFF in OTG device mode.
USB HSIC1 Support	Enables / Disables USB HSIC1.
USB SSIC1 Support	Enables / Disables USB SSIC1.
USB Port Disable Override	Selectively enables / disables the corresponding USB port from reporting a device connection to the controller.
XDCI Support	Enables / Disables XDCI.
XHCI Disable Compliance Mode	FALSE makes the XHCI Link Compliance Mode not disabled. TRUE disables the XHCI Link Compliance Mode.

Security Settings



BIOS Setting	Description
Setup Administrator Password	Sets an administrator password for the setup utility.
User Password	Sets a user password.

Boot Settings



BIOS Setting	Description
Setup Prompt Timeout	Number of seconds to wait for setup activation key. 65535 (0xFFFF) means indefinite waiting.
Bootup NumLock State	Selects the keyboard NumLock state.
Quiet Boot	Enables / Disables Quiet Boot option.
New Boot Option Policy	Controls the placement of newly detected UEFI boot options. Options: Default, Place First, Place Last
Boot mode select	Selects a Boot mode, Legacy / UEFI / Dual.
Boot Option Priorities	Sets the system boot order priorities for hard disk, CD/DVD, USB, Network.

Save & Exit Settings



BIOS Setting	Description
Save Changes and Exit	Exits system setup after saving the changes.
Discard Changes and Exit	Exits system setup without saving any changes.
Save Changes and Reset	Resets the system after saving the changes.
Discard Changes and Reset	Resets system setup without saving any changes.
Save Changes	Saves changes done so far to any of the setup options.
Discard Changes	Discards changes done so far to any of the setup options.
Restore Defaults	Restores / Loads defaults values for all the setup options.
Save as User Defaults	Saves the changes done so far as User Defaults.
Restore User Defaults	Restores the user defaults to all the setup options.

