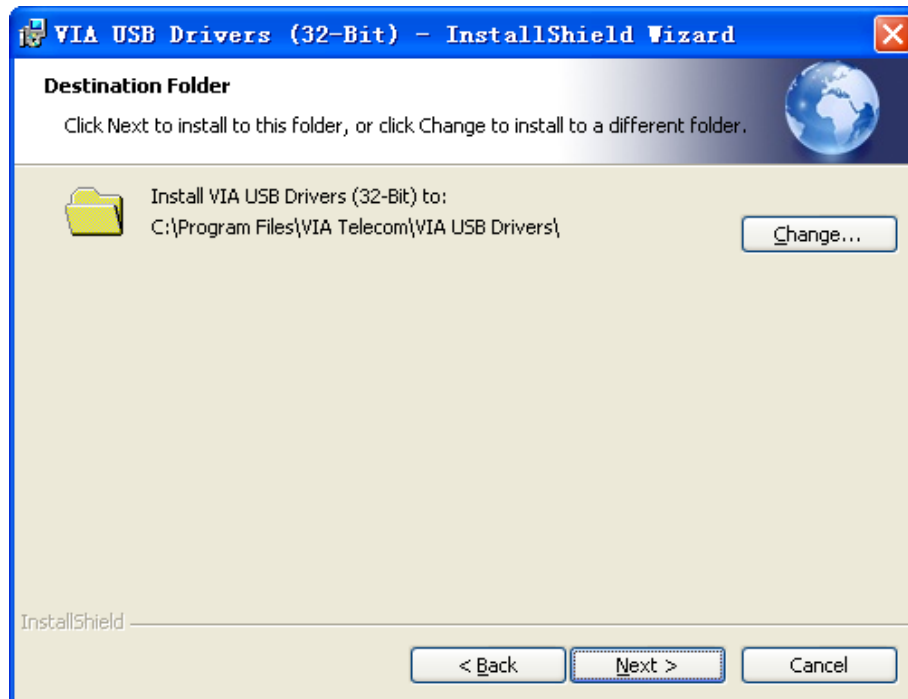


Shamu USB Dongle Data Card

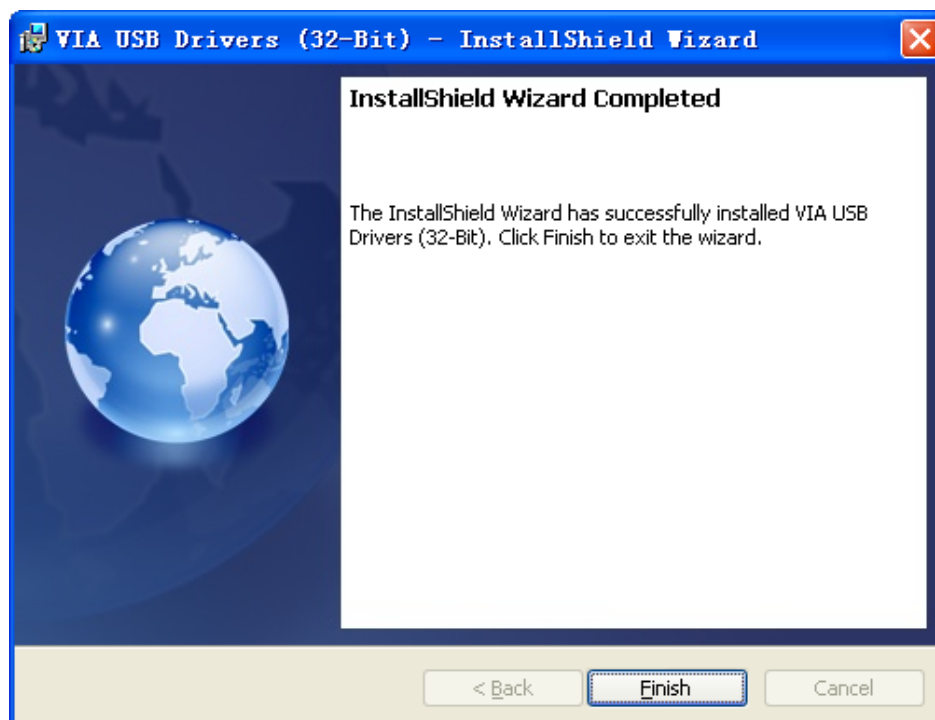
User Manual

● USB Driver Installation

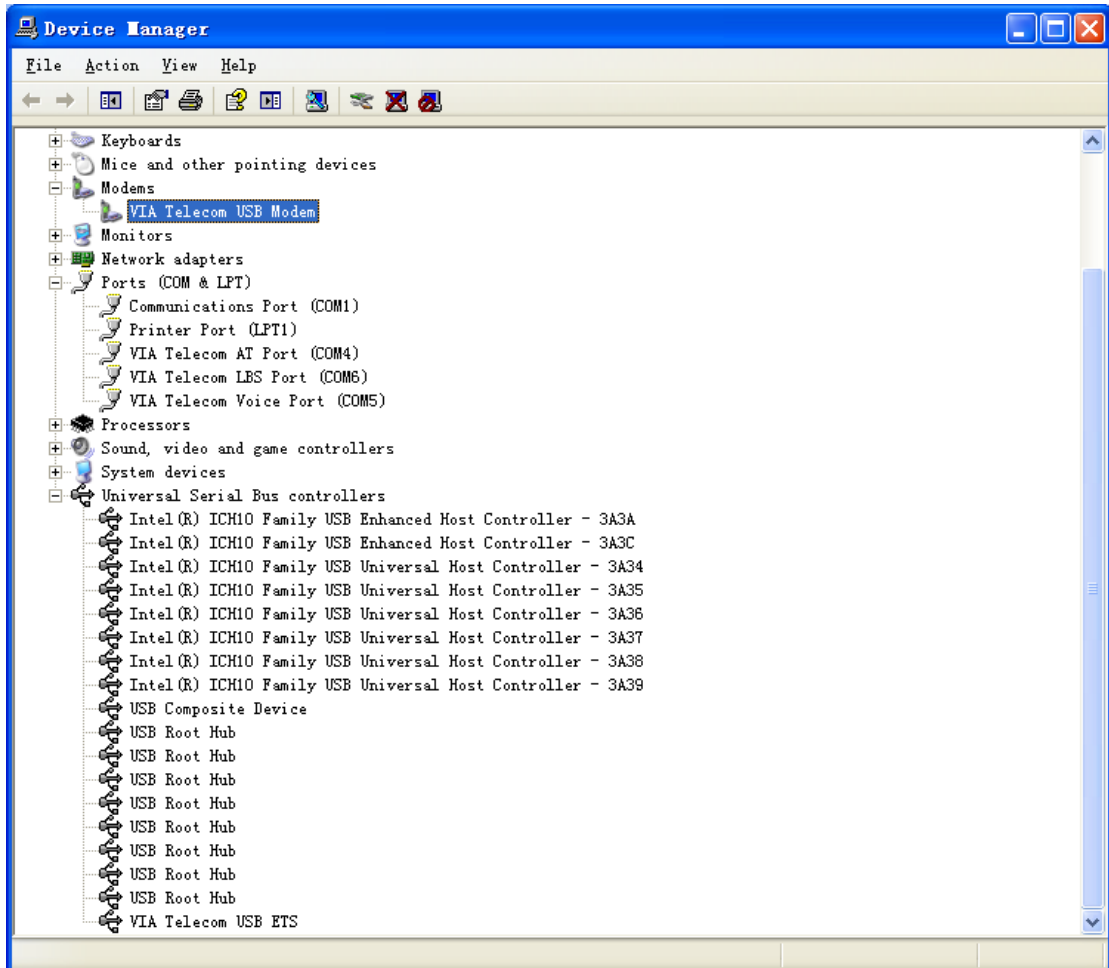
1. To install the VIA USB Windows device driver, you must first start the Setup application, **VIA USB Drivers 2.1.5 (32-Bit).exe**, by double-clicking the associated icon.
2. Choose the directory for the application to be installed.



3. Click **Install**, then this setup program will copy all the files into the directories on the local system drive of your PC. The following dialog box will appear upon execution.

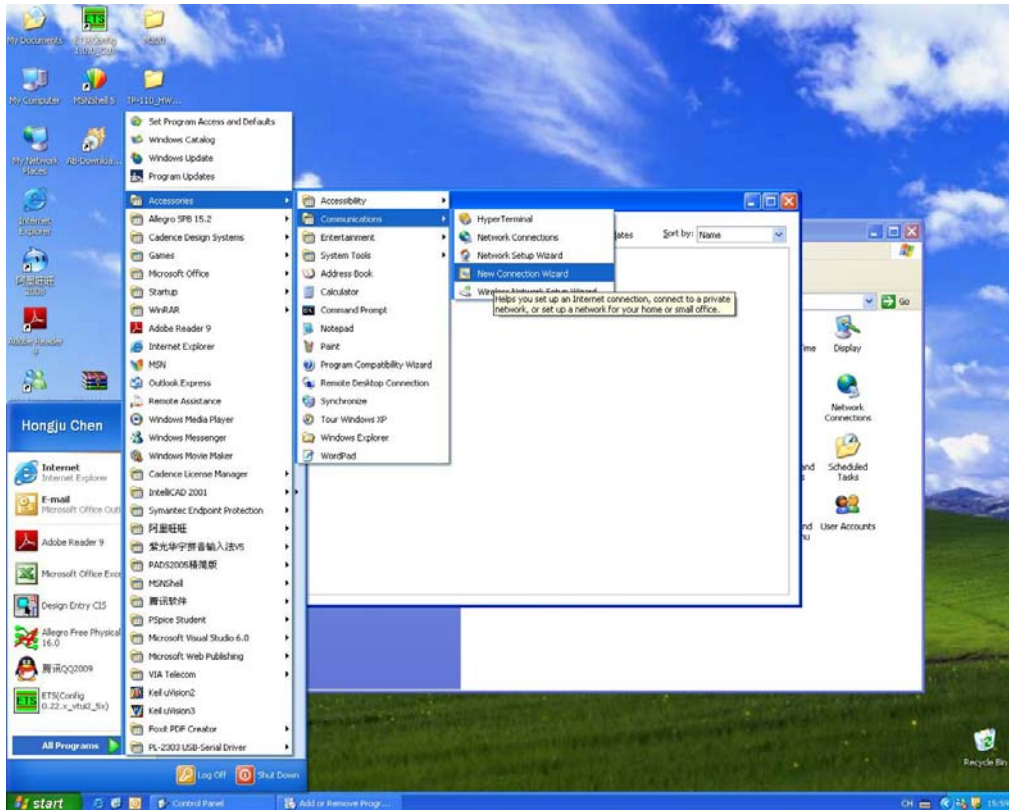


4. Click **Finish** when this action has been completed.
5. Power up the notebook/desktop, then Windows will install all the related drivers automatically. You can find **“VIA Telecom USB Modem”**, **“VIA Telecom AT Port”**, **“VIA Telecom LBS Port”**, **“VIA Telecom Voice Port”** and **“VIA Telecom USB ETS”** in Device Manager.

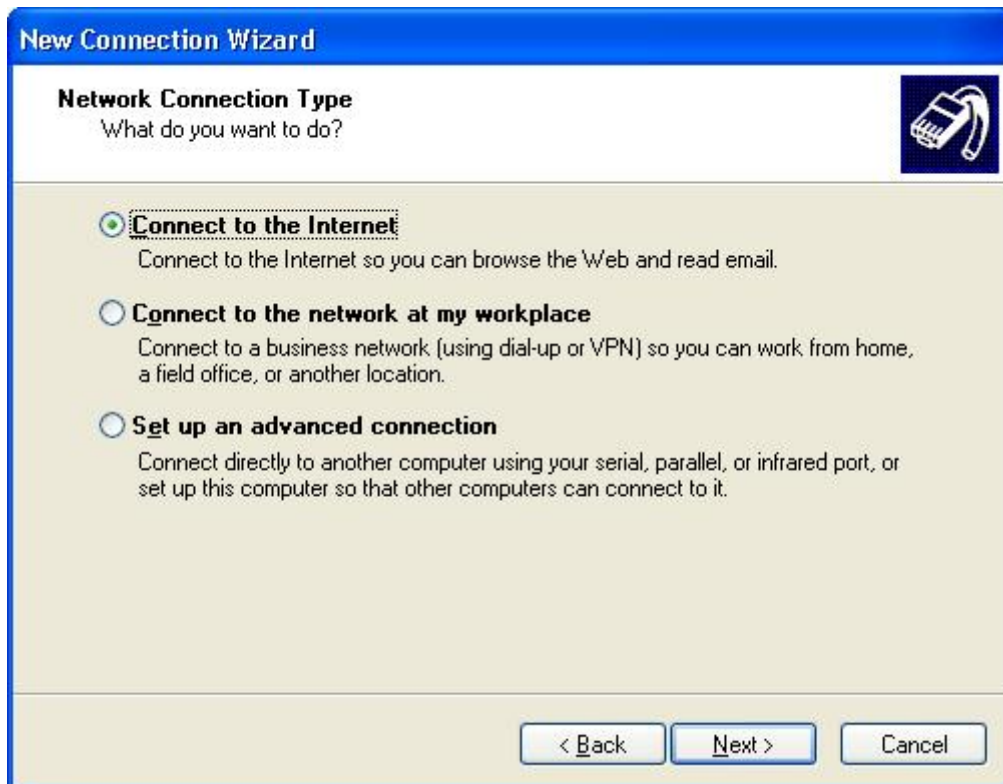


● Dial up Application Setup

1. Select "New Connection Wizard"



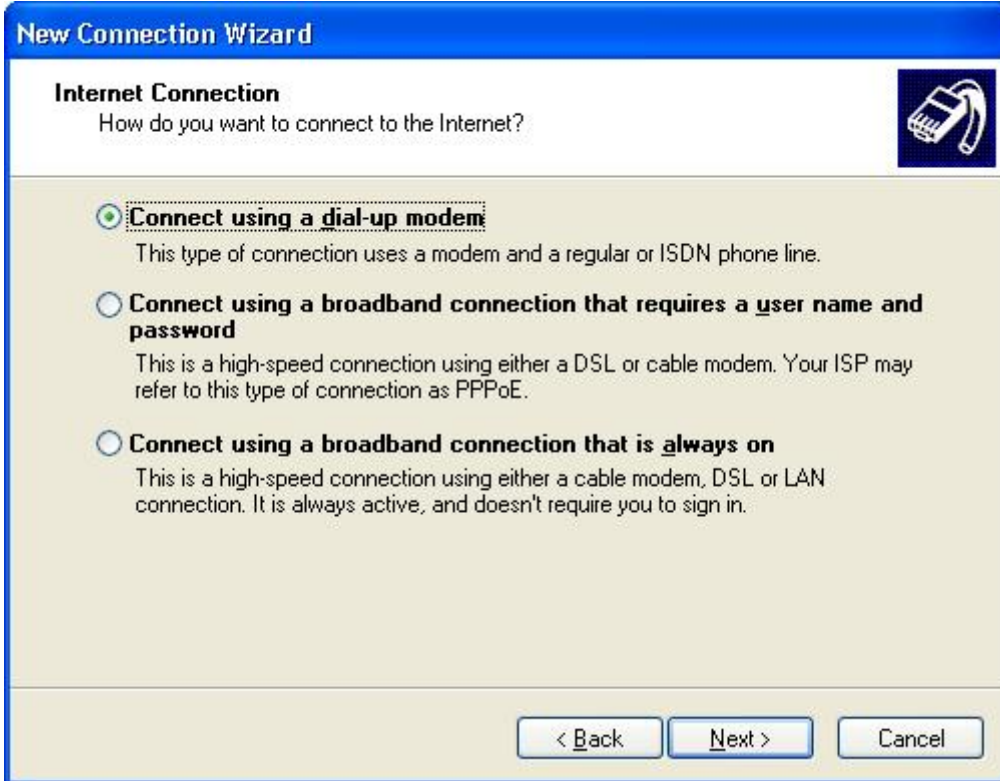
2. Select Connect to the Internet



3. Select "Set up my connection manually"



4. Select "Connect using a dial-up modem"



New Connection Wizard

Internet Connection
How do you want to connect to the Internet?

Connect using a dial-up modem
This type of connection uses a modem and a regular or ISDN phone line.

Connect using a broadband connection that requires a user name and password
This is a high-speed connection using either a DSL or cable modem. Your ISP may refer to this type of connection as PPPoE.

Connect using a broadband connection that is always on
This is a high-speed connection using either a cable modem, DSL or LAN connection. It is always active, and doesn't require you to sign in.

< Back Next > Cancel

5. Enter your ISP name



New Connection Wizard

Connection Name
What is the name of the service that provides your Internet connection?

Type the name of your ISP in the following box.

ISP Name


The name you type here will be the name of the connection you are creating.

< Back Next > Cancel

6. Enter your Number to Dial

New Connection Wizard

Phone Number to Dial
What is your ISP's phone number?



Type the phone number below.

Phone number:


You might need to include a "1" or the area code, or both. If you are not sure you need the extra numbers, dial the phone number on your telephone. If you hear a modem sound, the number dialed is correct.

< Back Next > Cancel

7. Select Anyone's use

New Connection Wizard

Connection Availability
You can make the new connection available to any user or only to yourself.



A connection that is created for your use only is saved in your user account and is not available unless you are logged on.

Create this connection for:

Anyone's use

My use only

< Back Next > Cancel

8. Enter user name and password



New Connection Wizard

Internet Account Information
You will need an account name and password to sign in to your Internet account.

Type an ISP account name and password, then write down this information and store it in a safe place. (If you have forgotten an existing account name or password, contact your ISP.)

User name:

Password:

Confirm password:

Use this account name and password when anyone connects to the Internet from this computer

Make this the default Internet connection

< Back Next > Cancel

9. After finishing the configuration, you can set up a connection



Connect Dial-up Connection



User name:

Password:

Save this user name and password for the following users:

Me only

Anyone who uses this computer

Dial:

Dial Cancel Properties Help

If Driver is properly installed, you can see “VIA Telecom USB Modem” in the **properties menu**.



● IMPORTANT NOTE:

FCC Section 15.19 Labelling requirements.

This device complies with part 15 of the FCC Rules. Operation is subject to the following two conditions: (1) This device may not cause harmful interference, and (2) this device must accept any interference received, including interference that may cause undesired operation.

FCC Section 15.21 Information to user

Changes or modifications not expressly approved by the party responsible for compliance could void the user's authority to operate the equipment.

FCC Section 15.105(b) Information to user

This equipment has been tested and found to comply with the limits for a Class B digital device, pursuant to part 15 of the FCC Rules. These limits are designed to provide reasonable protection against harmful interference in a residential installation. This equipment generates, uses and can radiate radio frequency energy and, if not installed and used in accordance with the instructions, may cause harmful interference to radio communications. However, there is no guarantee that interference will not

occur in a particular installation. If this equipment does cause harmful interference to radio or television reception, which can be determined by turning the equipment off and on, the user is encouraged to try to correct the interference by one or more of the following measures:

- Reorient or relocate the receiving antenna.
- Increase the separation between the equipment and receiver.
- Connect the equipment into an outlet on a circuit different from that to which the receiver is connected.
- Consult the dealer or an experienced radio/ TV technician for help.