

- Click “**Finish**” to close the window.
- Disconnect the USB cable from your PC then from your ViaMichelin Navigation X-970.

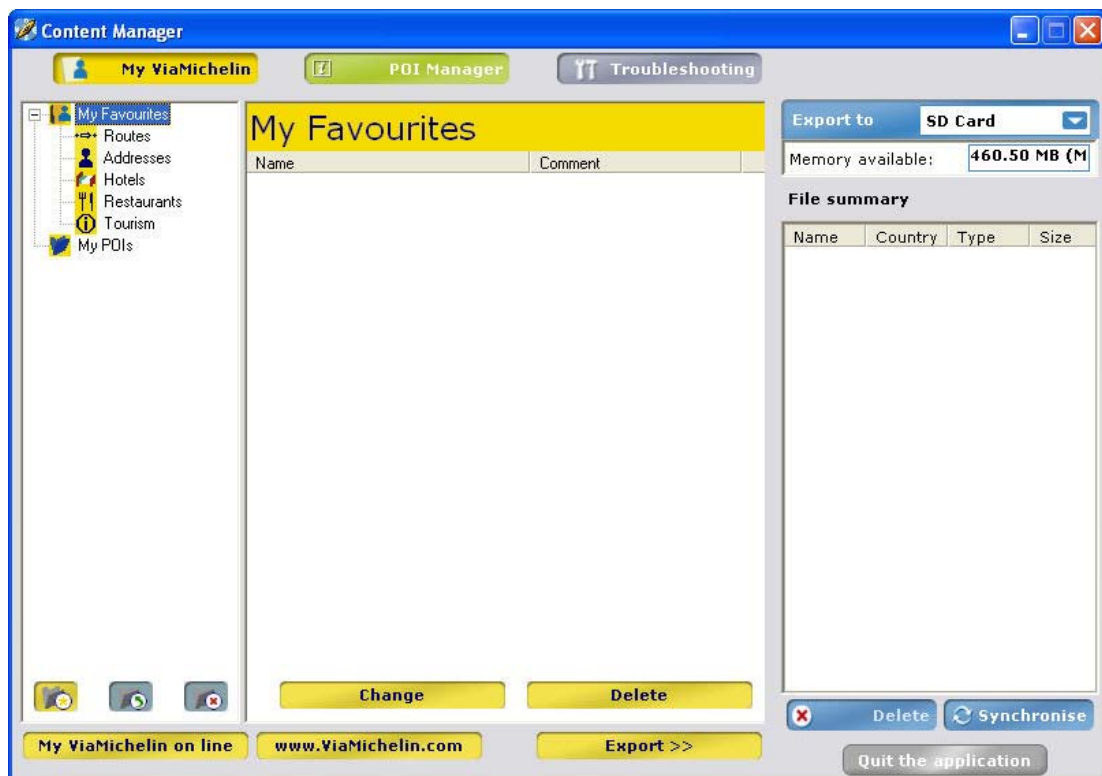
## 13\_Content Manager

This is the application installed on your PC to customise your maps, add new POIs (including personal POIs) or to regenerate your SD card if a problem occurs.

- Connect your ViaMichelin Navigation X-970 to your PC (*for more information, see paragraph 12.*).
- Install the DVD-ROM and start “**Content Manager**”:
  - or from: Start > Programs > ViaMichelin > ViaMichelin > ViaMichelin Navigation PND > Content Manager
  - or from: C:\Program Files\ViaMichelin\ViaMichelin Navigation PND\ContentManager.exe




The “**Content Manager**” application uses this connection to retrieve information from the PND, which will take a few seconds. Your PC then displays the following screen:





## 13.1 My ViaMichelin

- Click  .

The column on the right shows your various personal folders. Each folder – except the “**My POIs**” folder – contains the following directories:

- **Addresses** to identify the addresses of your choice.
- **Hotels** to save your favorite hotels.
- **Restaurants** to save your favorite restaurants.
- **Routes** to save the routes you use frequently.
- **Tourism** to save your favorite tourist sites.

- The buttons at the bottom of the column let you:

– **create a new folder**



– **change an existing folder**




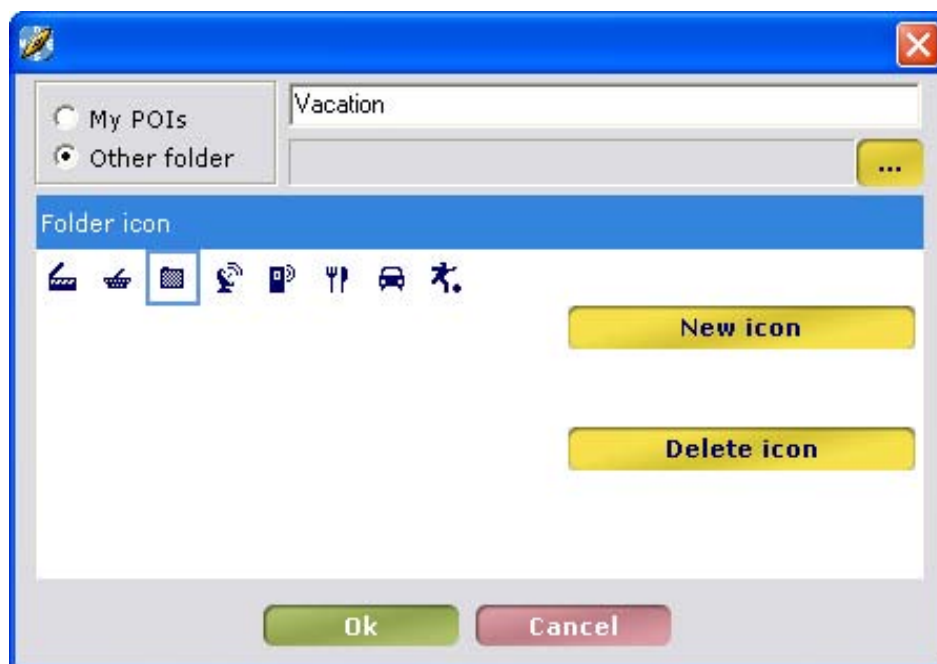
– **delete an existing folder**



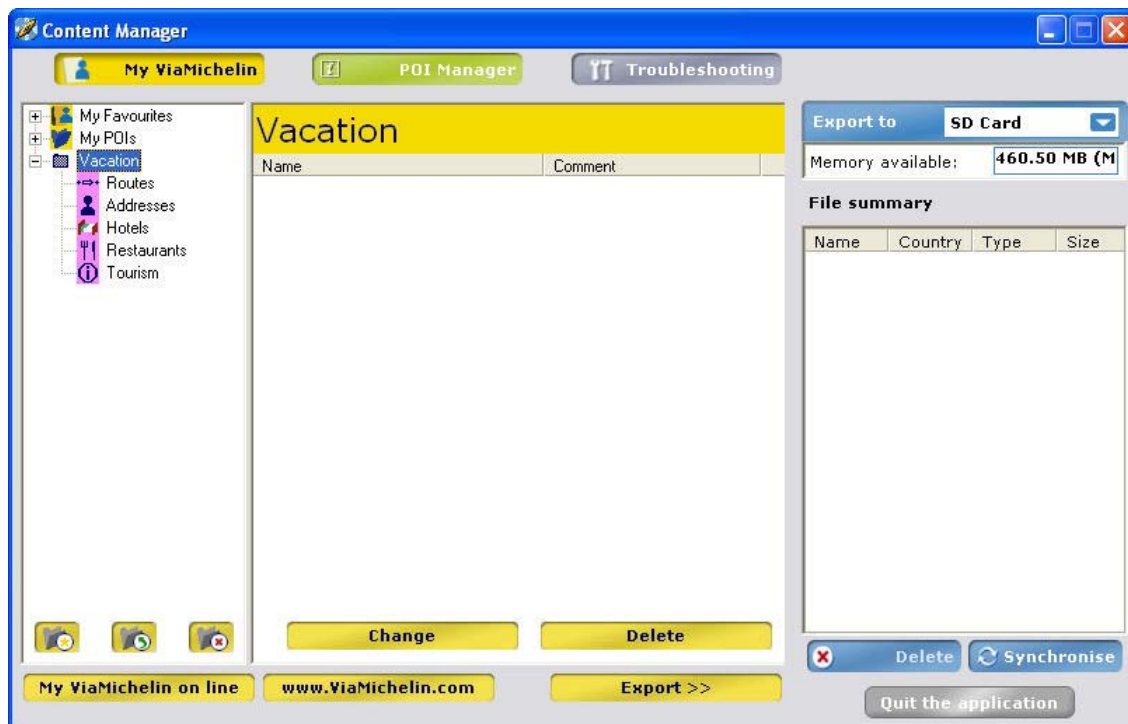
The “**My Favorites**” and “**My POIs**” folders are present by default and cannot be deleted.

### 13.1.1 Create a new folder


- Click the icon .
- Select “**Other folder**”.
- Give your folder a name.
- Select a folder color, which will be applied to the 5 category icons for this folder.
- Select an icon or click “**New icon**” to select the « **\*.bmp** » folder of your choice (16 x 16 pixels – 256 colors).

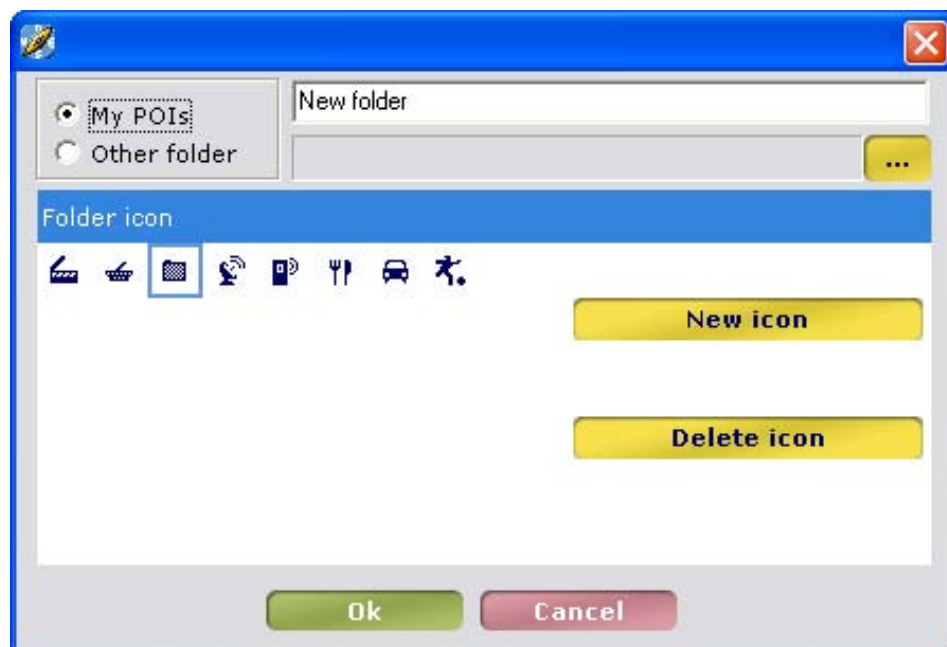


- Click “OK”.



### 13.1.2 Change an existing personal folder


- Select the personal folder you want and then click the icon .

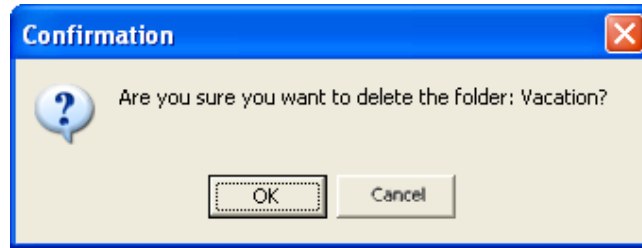


You can then change the title and color of the folder and icon selected.

- Click “OK” to save your folder’s new settings.

### 13.1.3 Delete a personal folder

- Select the personal folder you want and then click the icon .



- Click “OK” to confirm that you really want to delete it.


*Comment:*

If you select a sub-directory (Addresses, Hotel, Restaurant, Routes, Tourism) before clicking “Delete”, you will delete the entire personal folder and the five sub-directories and their content.

The central column contains the buttons:

- **Change** to change the name of an address or add a comment.
- **Delete** to delete an address from a folder.

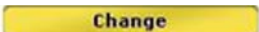
### 13.1.4 Change an Address Name

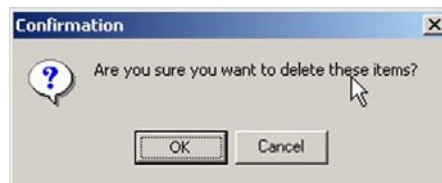
- Select the address in the folder for which you want to change the name or add or change the associated comment, click  then enter the new name.
- Click “OK” to save the changes.

*Comment:*

- You can move an address or a route from one folder to another simply by “**sliding**” it with the mouse.
- If you press the “CTRL” key while performing this “slide”, you will copy the address or route selected to the folder of your choice.
- Routes can only be moved or copied to “Routes” folders.
- Addresses in the “My POIs” folder can only be copied to other folders.

### 13.1.5 Delete an Address

- Select the address you want to delete from the folder you want and click .



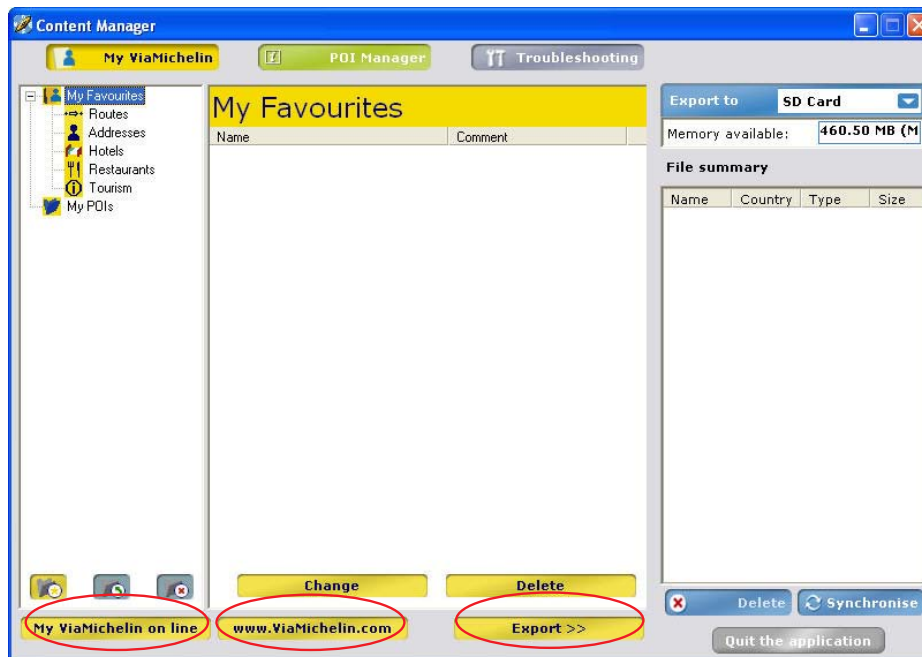
- Click “OK” to confirm that you really want to delete it or “Cancel” to choose not to delete the selected address.

*Comment:*

You can delete an address, a POI, a route, etc. from a folder, but if you try to delete a folder (for example “Addresses” in the main “Vacation” folder), the entire main folder will be deleted, not just the Addresses folder.

The bottom bar of the “**My ViaMichelin**” window contains the three following options:

- **My ViaMichelin on line** to access your “**My ViaMichelin**” account directly on the ViaMichelin web site
- **www.ViaMichelin.com** to go directly to the ViaMichelin web site
- **Export >>** to export the content of **My ViaMichelin** to the PND



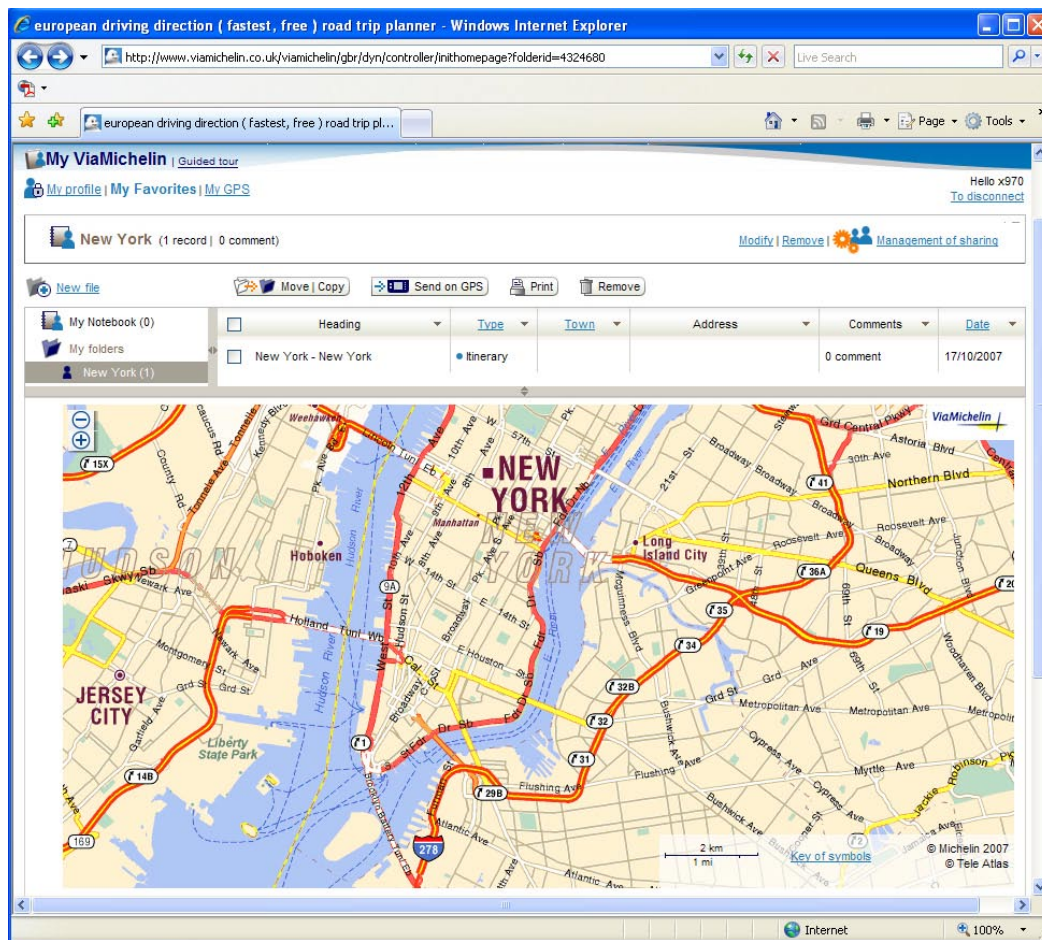
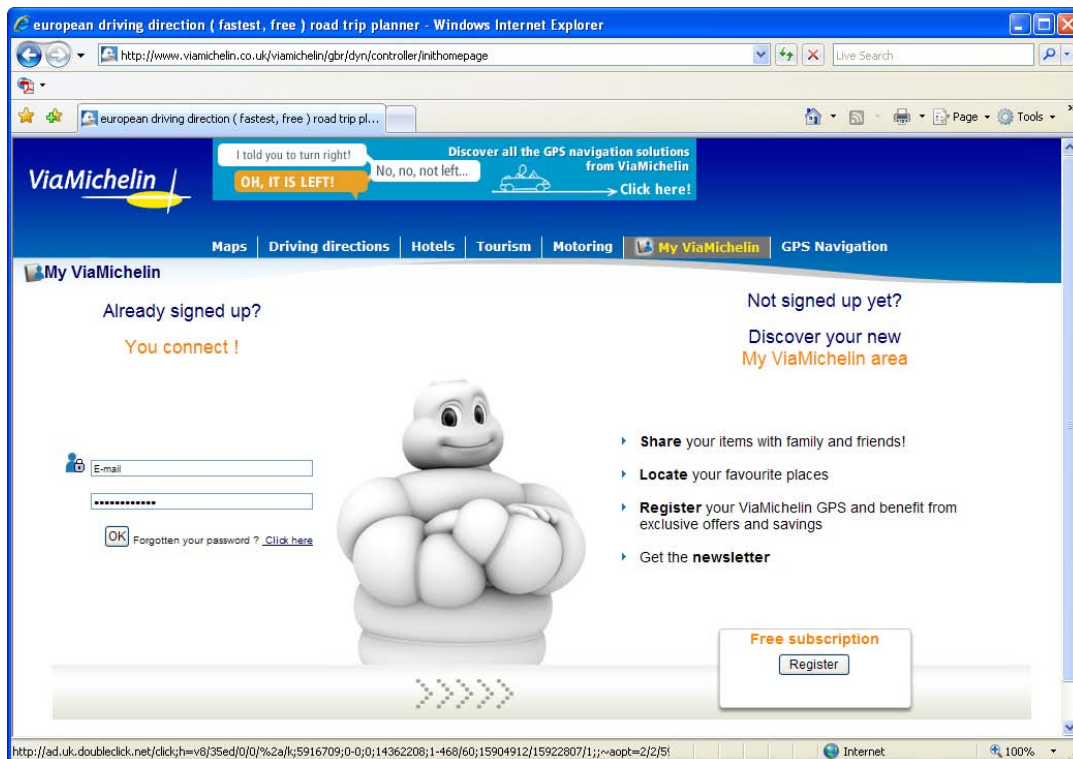
### 13.1.6 My ViaMichelin on line

If you have a “**My ViaMichelin**” account on the ViaMichelin web site, this link lets you access it directly to export addresses, routes, etc. from your web site account onto your PC and to your ViaMichelin Navigation X-970. You must tick the box “**I would like to be logged into my account automatically without having to enter in my details each time I visit**” in the settings of your “**My ViaMichelin**” web site account.

If you don’t have an account on the “**My ViaMichelin**” web site you will access the home page; then click the “**Register**” button to access the registration form, which is easy and quick to use and is free of charge.

Your addresses saved in your personal “**My ViaMichelin**” account on the ViaMichelin web site can then be passed onto and shared with friends who also have a ViaMichelin PND. You will then have a collection of common addresses and routes grouped together in your customizable folders that can be identified easily *(for more information, please see the FAQs on the ViaMichelin web site).*





- Select the address, addresses or entire folder you want to export, then click “**Export to GPS**”:

**My Export** Type Town Address

Export addresses found on the ViaMichelin website onto your ViaMichelin navigation device\* and make your journeys even easier!

Export file title:

**Send**

\* Service only available for portable navigation devices equipped with ViaMichelin Navigation version 6.

- Give your address a name, then click “**Send**”.

*Comment:*

*The name entered will only be memorized if you save the file on the PC. If you export the file directly to your PND via the “**Content Manager**” application, the save name will be the one allocated by the system.*

- Save the file to your PC desktop (or to the directory of your choice - out of the ViaMichelin tree structure).
- Or choose to open the file directly without saving it first.
- Close the download window, then go back to your PC desktop.




- Double-click the file .

The activation of a “**xvm**” file automatically starts the “**Content Manager**” application. The addresses are then created in a folder with the same name as the one on the web site.

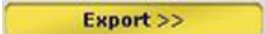
- From the “**My ViaMichelin**” tab in the “**Content Manager**” application, click the “**Export**” button to copy all the customized folders into the “**File summary**” column.
- Perform a synchronization as described in paragraph 13.4.

### 13.1.7 www.ViaMichelin.com

- Click  .

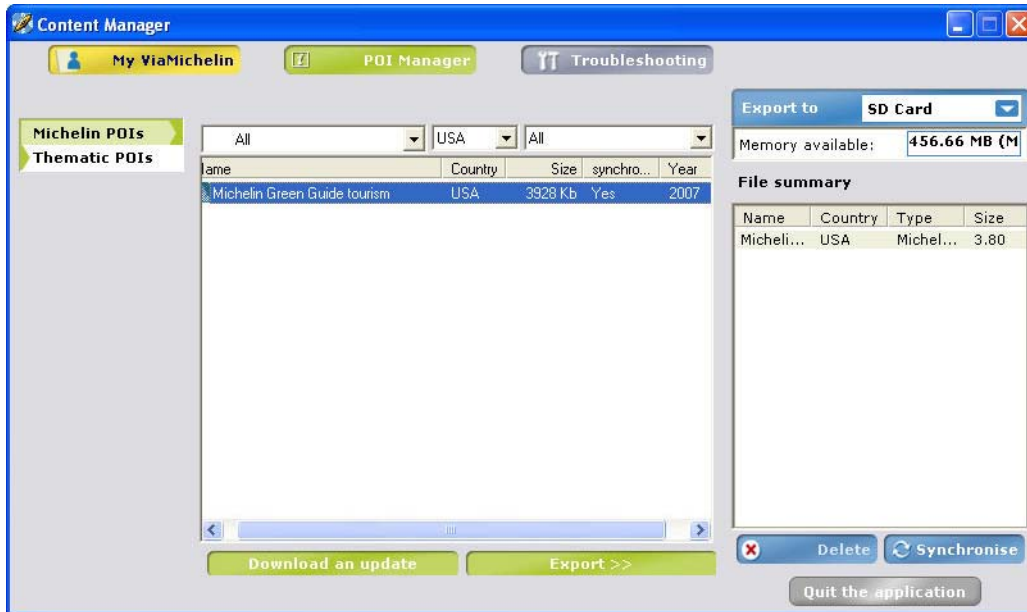
This link lets you access the ViaMichelin web site home page directly: <http://www.ViaMichelin.com>

### 13.1.8 Export

- Select the addresses and routes of your choice, then click  .

This function lets you select the addresses in your folders and export them to your PND.





- When the content you want to export to your ViaMichelin Navigation X970 is in the “**File summary**” column, perform a synchronization as described in paragraph 13.4.

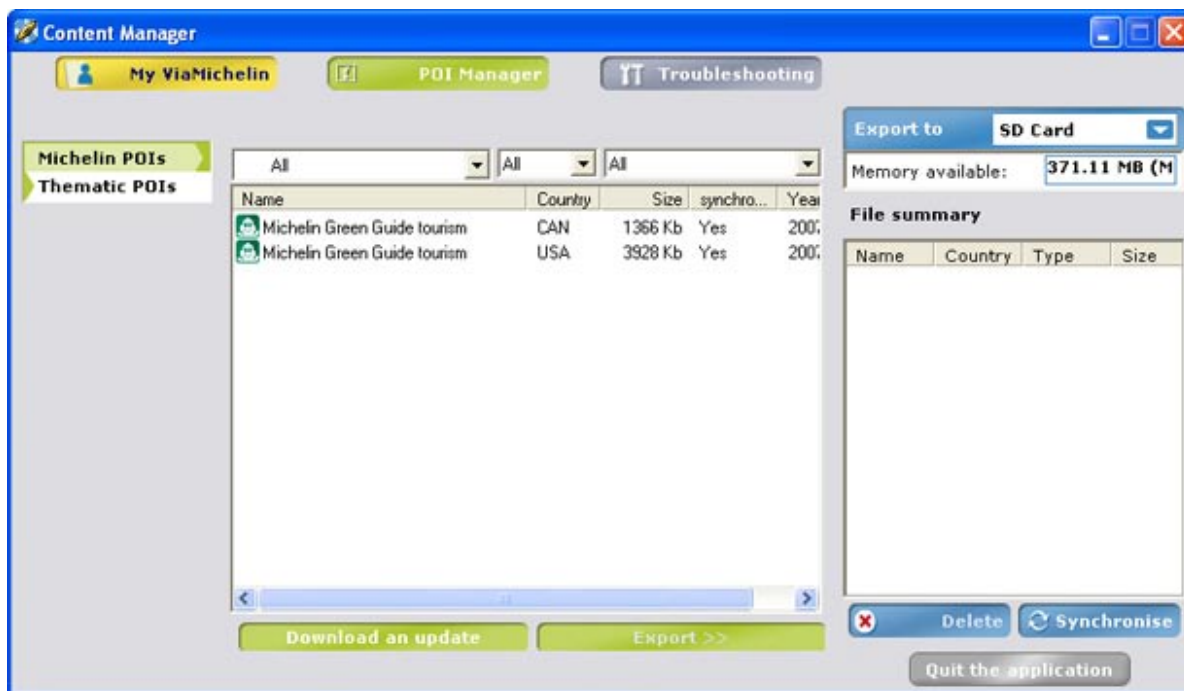


## 13.2 POI Manager

- Click  **POI Manager** .

You can use the “**POI Manager**” program to manage 2 types of POI:

- **Michelin POIs** to export Michelin POIs to the PND.
- **Thematic POIs** to export POIs organized by theme to the PND.



### 13.2.1 Michelin POIs

- Select “**Michelin POIs**” from the list of POIs.

You can display the full list of Michelin POIs, Michelin Green Guide tourist sites or select one of these three categories from the drop-down menu list. You can also select POIs for one country only from the list above the “**Country**” column.

- Click the POI you want.

When you have selected all the files you want, click “**Export >>**”. The selected files are then shown in the “**File summary**” table.

- Perform a synchronization as described in paragraph 13.4.

#### *Comment on Michelin POIs and Thematic POIs:*

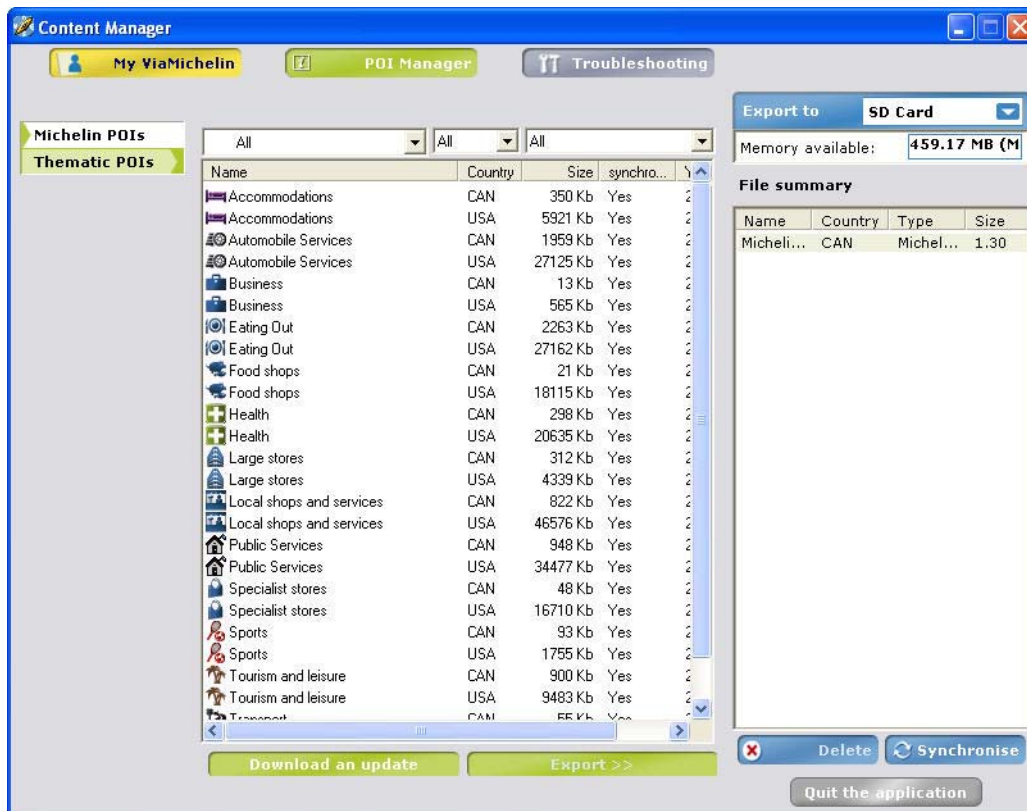
*All Michelin POI files: Hotels, restaurants and tourist sites, are on the original SD card of your ViaMichelin Navigation X-970.*

*Similarly, all **Thematic POI** files are on the original ViaMichelin Navigation X-970 card.*

*However, you may delete the POI categories you do not want from your PND at any time. You can restore them at any time using the “**POI Manager**” module.*

### 13.2.2 Thematic POIs

- Select “**Thematic POIs**” from the list of POIs.



- Click the POI you want.
- When you have selected all the files you want, click “**Add to Selection**”. The selected files are then shown in the “**File summary**” table.
- Perform a synchronization as described in paragraph 13.4.

The **Thematic POI** files are exported to the SD card. They are copied to the directory “**VMNav\_POI**” on the SD card.

### 13.2.3 How to Add a “\*.poi” File

You will also find “**poi**” files on ViaMichelin partner websites (for example, “CourtePaille” restaurants), which are made available to you free of charge and regularly updated. You can use the “**Content Manager**” application to download and add these files to have information that is permanently kept up-to-date on your ViaMichelin Navigation X-970.

#### 13.2.3.1 Directly from the web site

- Click “**Open**”.

The POI file is then saved directly onto your PND and your PC. You can see the file in the “**Thematic POI**” section of the “**POI Manager**”.

#### 13.2.3.2 From a saved file

- When downloading the file, click “**Save**” and save the file to your PC’s desktop or to another directory on your PC’s hard disk - out of the ViaMichelin tree structure.

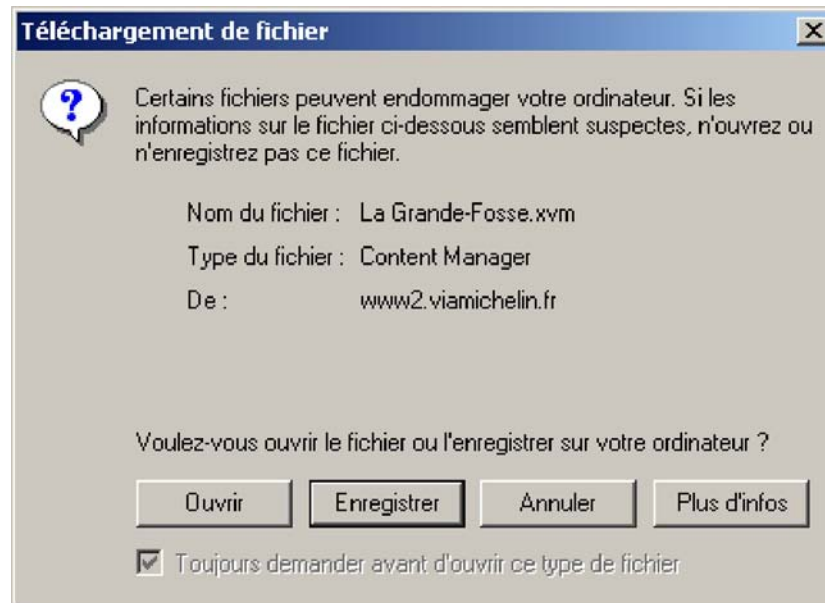
You can then log off the Internet.

- Double-click the “**poi**” file to be added: the POI file is then saved directly onto your PND and your PC. You can see the file in the “**Thematic POI**” section of the “**POI Manager**”.

#### 13.2.4 How to add a ViaMichelin “\*.xvm” file

“**xvm**” files are generated by the ViaMichelin web site to let you easily add the addresses or routes you want to your PND.

- Log on to the ViaMichelin web site: <http://www.ViaMichelin.com>
- Perform your search.
- Click on the “**Send this address: to my GPS**” link:
- In the “**Send to my ViaMichelin GPS**” window, give your export a name; then click “**Send**”.



##### *13.2.4.1 Directly from the ViaMichelin web site*

- Click “**Open**”.

The address is then directly saved in the “**My Favorites**” / “**Addresses**” folder (or the “**Routes**” folder if you are saving a route).

##### *13.2.4.2 From a saved file*

- When downloading the file, click “**Save**” and save the file from the ViaMichelin web site to your PC’s desktop or to another directory on your PC’s hard disk - out of the ViaMichelin tree structure.

You can now log off the ViaMichelin web site.

- Double-click the “**xvm**” file to be added: The address is then directly saved in the “**My Favorites**” / “**Addresses**” folder (or the “**Routes**” folder if you are saving a route).

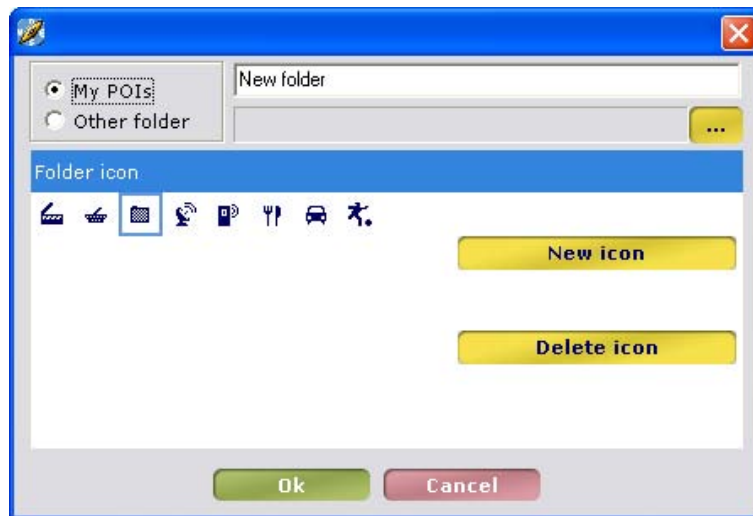
When you have selected all the files you want, click “**Add to Selection**”. The selected files are then shown in the “**File summary**” table.

- Perform a synchronization as described in paragraph 13.4.

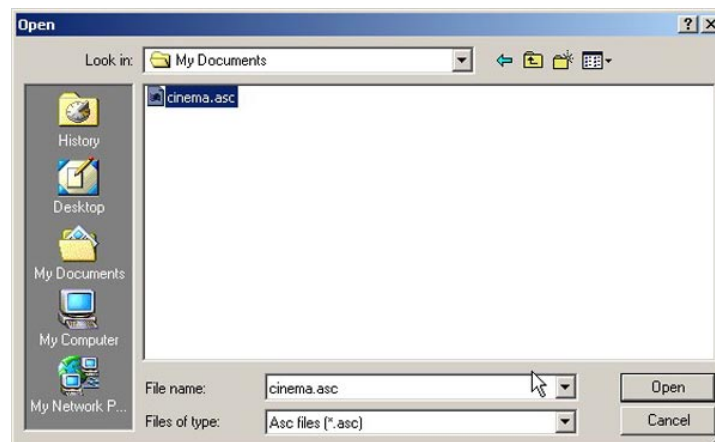
### 13.2.5 How to add an “\*.asc” file

With the “**Content Manager**” application it is possible to add “\*.asc” type text files matching the structure described in paragraph 13.2.5.1.

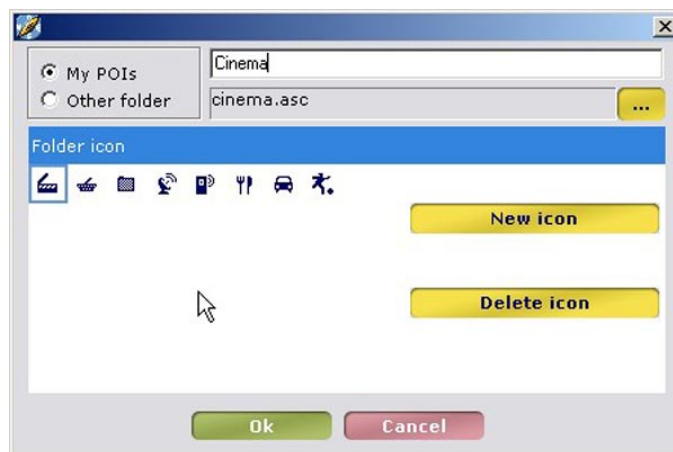
- Connect your ViaMichelin Navigation X-970 to your PC.
- Start the “**Content Manager**” application.
- Go to the “**My ViaMichelin**” section.
- Select the “**My POIs**” directory.
- Click the icon  to create a new folder.



- Click the box with 3 small points as shown in the figure above.
- Select the “\*.asc” file you want from the folder in which it has been saved.

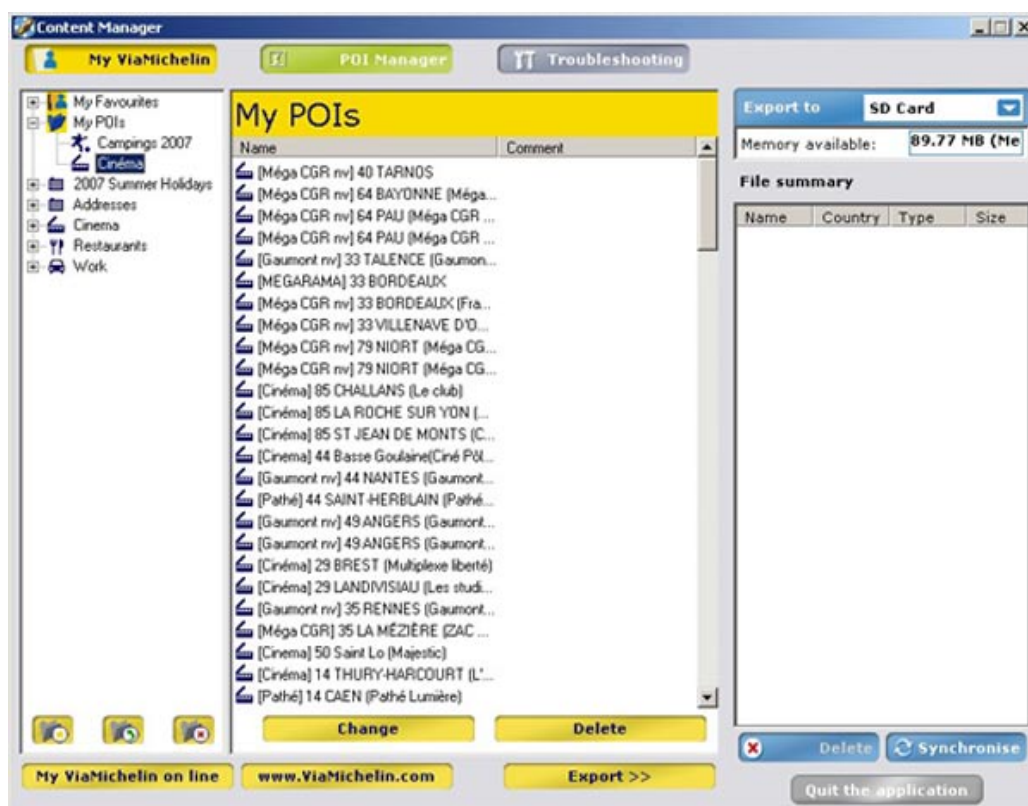


- Click “**Open**”.



- Select an icon from the ones displayed or click “**New icon**” to select a “**bmp**” file (16 x 16 pixels) that will be the icon associated with the added file.
- Enter a name for this new file.
- Click “**OK**”.

The file will then be added to a new directory of the “**My POIs**” file.



When you have selected all the files you want, click “**Export >>**”. The selected files are then shown in the “**File summary**” table.

- Perform a synchronization as described in paragraph 13.3.

#### 13.2.5.1 Create an “\*.asc” file

To create an “**.asc**” type file to add to your ViaMichelin Navigation X-970, follow the instructions below:



You have to create an “.asc” file for each category of saved address to be imported (which also means you can subsequently delete saved items solely for a given category).

On your PC:

- Create a text file (with Windows Notepad, for example: \*.txt).
- Open this text file and create your saved addresses as follows:
- Each line must contain information on a single saved address only and use the following syntax:  
[Longitude], [Latitude], [Name]
- The separator is the comma “,”
- The name must be in quotation marks “ ”
- Lines preceded by a semi-colon “;” are comment lines.
- Longitude and Latitude must be given in degrees and decimal fractions of degrees.
- The longitude is defined on a scale of +180° to -180° or 180° East to 180° West. The latitude is defined on a scope of 0° at the equator to 90° at the poles.
- Rename the text file using “.asc” as the extension: e.g.: “**MyRestaurants.asc**”
- Save the file in the directory of your choice (out of the ViaMichelin tree structure).
- Check that your ViaMichelin Navigation X-970 system is connected and that the link with your PC is working.
- Start Content Manager and click the POI Manager tab
- Select the “.asc” file saved in the directory of your choice and confirm.
- Select the category of saved address to which imported saved addresses will be attached.

After importing the file into your ViaMichelin Navigation X-970, you can set the display and the POI Warner as you want.

EXAMPLE OF AN “asc” FILE:

```
-----  
; Sample File  
;  
; Longitude, Latitude, “Name of saved address”  
; =====  
2.3336 , 48.8675 , “Michelin Store Opéra”  
2.2935 , 48.8587 , “Eiffel Tower”  
-1.460885 , 43.484898 , “Bayonne Center”  
  
; End of file  
-----
```

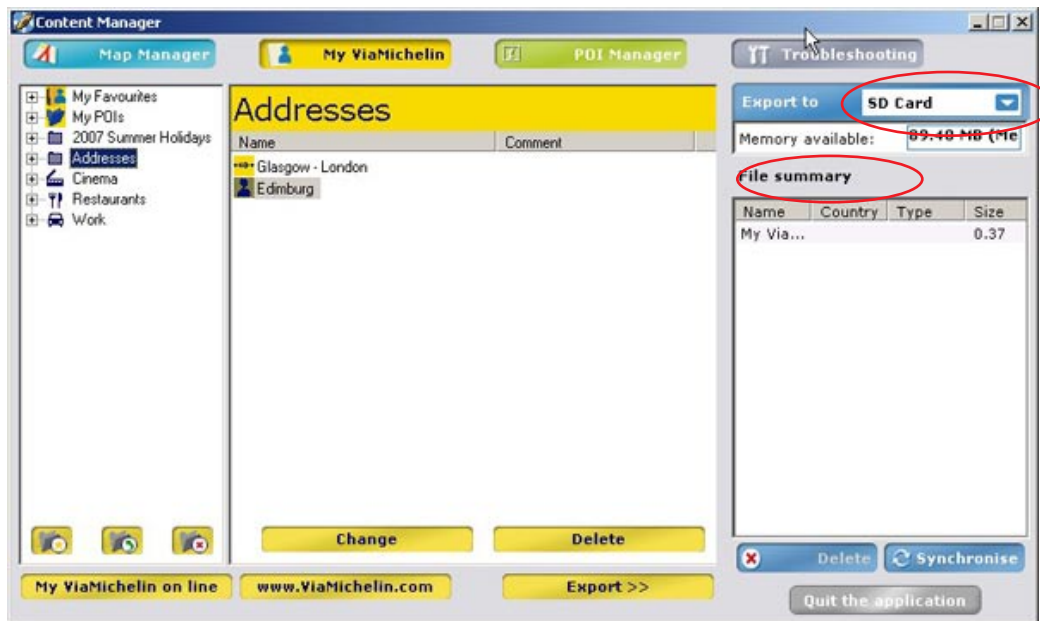
### 13.2.5.2 Creating a new icon

- On the PC, open the “**Paint**” drawing program (MSPAIN.T.EXE). To open it: Start / Programs / Accessories.
- In Image / Attributes, select: 16x16 pixels and color, then click “**OK**”.
- In View / Zoom, select Large Size.
- Using the pencil, the brushes, etc. and the color box, draw your icon.
- In File / Save As, give your icon a name and select the format “**Bitmap 256 colors \*.bmp**”.
- Save your icon in the folder of your choice.
- Close “**Paint**”.





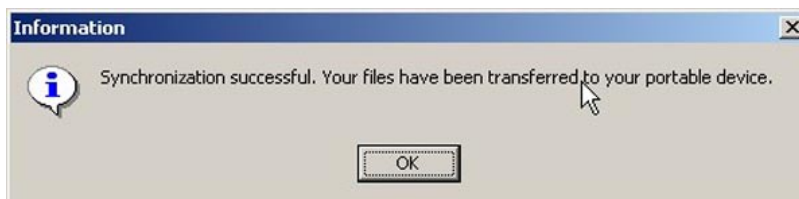
## 13.3 Synchronize

After performing the operations of your choice in **Map Manager**, **My ViaMichelin** and / or **POI Manager** and transferring all the files and maps to be added to your ViaMichelin Navigation X-970 to the “**File summary**” table, you must perform a synchronization between your PC and your PND.



- Select the place “SD Card” (or “PND memory”) where the files and maps will be saved in “Export to”. If the volume of the files to export is greater than the capacity of the storage location, a message will tell you that it is not possible to perform the synchronisation.

- Click  **Delete** to delete files you do not want to export to your PND.
- Click  **Synchronise** to activate the export.



- Click “OK” to go back to the “Content Manager” application.

*Comment:*

*This synchronization re-exports the files and maps you have selected and all the data from your “My ViaMichelin” folders to your ViaMichelin Navigation. This may take several minutes depending on the volume.*

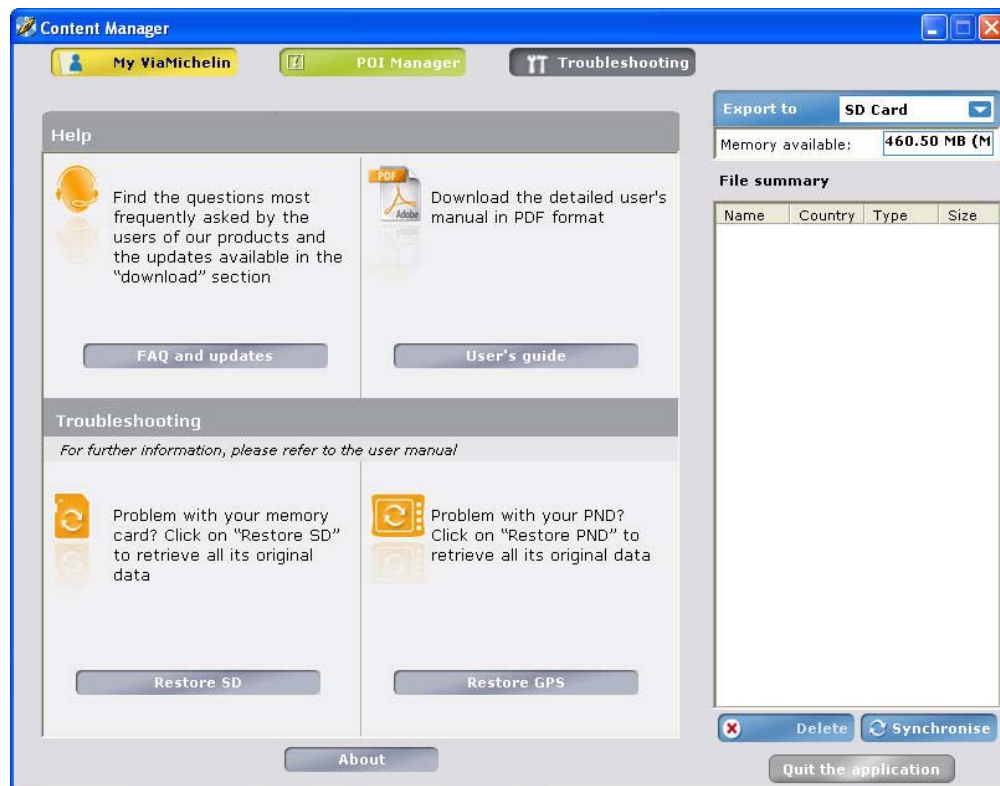
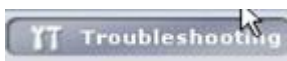
After a synchronization between your PC and your PND:

- The card files will be visible on your PND in:  
**Main Menu > Options > Map > Change Or Delete Map > Change Map**
- An address file (“xvm” file) from your “My ViaMichelin” web site account will be saved in a new folder in the “Content Manager” “My ViaMichelin” section and on your PND in:  
**Main Menu > My ViaMichelin > [ New folder ] > Addresses > ...**
- A route file (“xvm” file) from your “My ViaMichelin” web site account will be saved in a new folder in the “Content Manager” “My ViaMichelin” section and on your PND in:  
**Main Menu > My ViaMichelin > [ New folder ] > Routes > ...**
- An “asc” file is saved in the “My POIs” section of the “Content Manager”  
**Main Menu > My ViaMichelin > My POIs > [ New folder ]**
- A ViaMichelin partner company “poi” file will be saved in the “POI Manager” / “Thematic POI” section and on the PND in: **Main Menu > Plan Your Journey > Search for a POI > [ New folder ]**
- A ViaMichelin “poi” file will be saved in the “POI Manager” / “Thematic POI” option of the “Content Manager” and on the PND in: **Main Menu > Plan Your Journey > Search for a POI > New File**
- A ViaMichelin “poi” file (for example Michelin guide - Hotels) will be saved in the “POI Manager” / “Thematic POI” option of the “Content Manager” and on the PND in:  
**Main Menu Principal > Plan Your Journey > Search for a POI > Michelin Guide Hotels**



## 13.4 Troubleshooting

Click



You can find additional help menus to maintain, use and get the best out of your ViaMichelin Navigation X-970:

- **FAQ and Updates** to access online help and updates for ViaMichelin programs.
- **User Manual** to download the QuickStart manual or the full manual.
- **Restore SD** to regenerate your SD card to its factory settings.
- **Restore PND** to reinstall your PND to its factory settings.

### 13.4.1 FAQ and Updates

- Click **FAQs and Updates** to access the ViaMichelin navigation web site, in the “Support” section. You can then access the following sections directly:

<http://www.ViaMichelin.com> > GPS Navigation > Support > FAQ  
> Patches and Updates  
> Customer Services Department

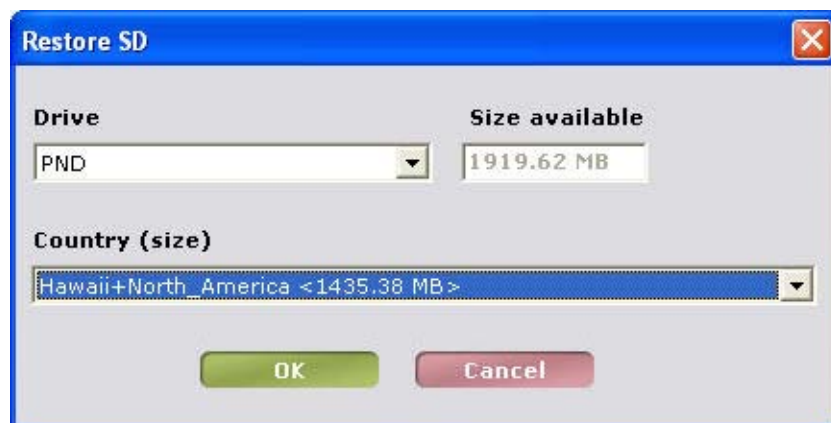
### 13.4.2 User Manual

- Click **User’s Guide** to access the ViaMichelin navigation web site, in the section where the detailed manuals of the various ViaMichelin navigation models and software versions are presented:

<http://www.ViaMichelin.com> > GPS Navigation > Support > User manuals

### 13.4.3 Restore SD

- Click **“Restore SD”** to start the procedure to completely regenerate the SD card in your ViaMichelin Navigation X-970, depending on the card **“activated”** when registering the product.



Specify where you want to copy the files to by ticking the **“Drive”**, the **“available size”** tells you the storage capacity of the drive and the **“Country (size)”** gives the map that will be regenerated.

- Click **“OK”** to start the procedure to restore the SD card or click **“Cancel”** to exit this application.

You can see the progress of the restore procedure on the task bar. Regenerating an SD card depends on the map set to be regenerated, taking into account the transfer speed of data managed by the Microsoft ActiveSync® software. For example, it takes about 90 minutes to regenerate a 2 GB SD card with the map of Europe.

When the SD card has finished regenerating you should perform either a full device reset (hard reset) or Restore PND procedure (presented in the next paragraph) so that the regenerated SD card data is taken into account.

#### *Comments:*

*The **Restore SD** function does not copy the “MyViaMichelin” folder and its content to the SD card. If you want to save your personal POIs, addresses and routes you must **“Export”** your folders from the “My ViaMichelin” option of the “Content Manager” (for more information, see paragraph 13.1.8.)*

### 13.4.5 Restore PND

---

- Click “**Restore PND**” to start the procedure to regenerate the original programs installed on the PND. This function does not affect the map part of your software (unlike the function Restore SD), but only the functionalities.



- Click “**Restore**” to start the procedure to restore the programs or click “**Cancel**” to abandon this procedure.

The task bar shows the progress of the procedure, which only takes a few minutes whatever map set is installed on your ViaMichelin Navigation X-970.

### About

---

- Click “**About**” to find out which version of “**Content Manager**” is installed.
- Click “**Quit the Application**” to close and exit the “**Content Manager**” program.

## 14\_Technical information



### 14.1 PC configuration for installing the DVD-ROM

---

- Minimum PC configurations required:
  - PC equipped with a Pentium III ® - 500 MHz processor
  - 512 MB of RAM
  - DVD-ROM drive
  - Microsoft Windows 2000® or Windows XP® (32- bit) or Windows Vista (32-bit)
  - Space available on your hard drive: 4 GB Country version / 6 GB Europe version
- Internet connection to activate the DVD-ROM and download POI files or software updates or patches.



### 14.2 ViaMichelin Navigation X-970 technical information

---

- |                                   |   |
|-----------------------------------|---|
| • Dimensions (L x W x H) in mm    | 108 x 80 x 20,6 mm  |
| • Weight                          | 155 g   |
| • Cigarette-lighter cable voltage | 12 V  |
| • Screen                          | Toppoly - 3.5''<br>QGVA LCD – 320 x 240 pixels - 65 536 colors<br>Transmissive type – with non-reflective coating               |
| • Processor                       | Samsung SC2440  |
| • Processor speed                 | 400 MHz   |
| • Operating system                | Windows CE.net 5.0  |
| • ROM memory (Flash)              | 128 MB  |
| • RAM memory                      | 64 MB   |
| • SD card reader                  | For SD cards with a storage capacity of up to 2 GB  |
| • USB link                        | v 2.0   |
| • Operating conditions            | -10° to 55°C (battery charge: between 0° and 43°C)<br>(storage: -20°C to 70°C)<br>10 – 85 % humidity<br>Max. altitude: 18,000 m |
| • Battery                         | Lithium-ion   |
| • Battery life                    | Approximately 3 hours   |
| • GPS standard used               | NMEA 0183 (2.x) – 4.800 bps – Datum WGS 084   |
| • Reception unit                  | SIRF Star III   |
| • antenna connector standard      | MMCX  |
| • Antenna                         | PIFA type   |
| • loudspeaker                     | 1W / 3 W with the support loudspeaker   |
| • Headset connector / TMC antenna | 3.5 mm jack – stereo – 16 Ohms  |
| • FM frequency scanned            | 76 – 108 MHz  |
| • RDS sensitivity                 | < 35 dB/uV  |
| • Bluetooth®                      | BQB - v 2.0 – Classe 2  |
| • Certifications                  | Safety CE<br>EMI CE<br>Bluetooth® BQB<br>Environmental RoHS & WEEE  |



## 15\_What to do if...

In this table, we suggest a few answers to frequently asked questions:

<b>How can I perform a “partial” or “soft reset”?</b>	<p>A partial - or soft reset - restarts your ViaMichelin Navigation X-970 if the application crashes.</p> <p>To perform a soft reset, press the “<b>Reset</b>” point on the back of your ViaMichelin Navigation X-970 (<i>with an opened out paperclip, for example</i>).</p> <p>The soft reset closes the application and restarts the ViaMichelin Navigation software.</p> <p><i>Comment:</i></p> <p>Only procedures running at the time of the reset may be lost (e.g. the current route).</p>
<b>How do I perform a “full” or “hard reset”?</b>	<p>A full - or hard reset - restores your ViaMichelin Navigation X-970 to its initial conditions.</p> <p>After this operation, you will need to reinstall the software.</p> <p>To perform a hard reset:</p> <ul style="list-style-type: none"><li>- connect your device to the cigarette-lighter cable, the USB cable or a power cord.</li><li>- remove the SD card from the PND.</li><li>- perform a reset by pressing the “<b>Reset</b>” at the back of the device then, just after doing so, press the ON/OFF button and keep it pressed, without the card.</li><li>- after a few seconds a message and a countdown appear on the screen. Keep the ON/OFF button pressed down until the end of the countdown.</li><li>- put the SD card back into the PND and reinstall the ViaMichelin Navigation program.</li></ul>
<b>The device does not switch on when I press the “ON/OFF” button:</b>	<p>Connect your device to the cigarette lighter cable or power adapter for at least 4 hours to fully recharge your PND. If the charge indicator diode does not switch on after several hours of recharging and the diode does not switch to green, please contact your reseller to have your device checked.</p>
<b>During navigation, the voice messages are in another language:</b>	<p>In the <b>Main Menu</b>, go to <b>Options</b> &gt; <b>General</b> &gt; <b>Language</b> and select the Voice Guidance language you want.</p>
<b>How do I update my POIs?</b>	<p>Use POI Manager to download and add your POI files from the ViaMichelin web site: <a href="http://www.ViaMichelin.com">http://www.ViaMichelin.com</a></p>
<b>What is the difference between the Shortest and the Quickest route?</b>	<p>When preparing a route, it is possible to specify that the system should calculate the journey on the basis of the criterion “<b>Quickest route</b>” or “<b>Shortest route</b>”.</p> <p>The “<b>Shortest route</b>” criterion selects the most direct road journey between the points of departure and arrival.</p> <p>The “<b>Quickest route</b>” calculates the shortest route on roads which have the highest average speeds.</p> <p>For more information, please see <a href="#">Section 10_NOTES AND TIPS</a></p>

---

**How do you go about installing the DVD-ROM on the PC if you get a CRC error message when you start the DVD-ROM?**

If an error message appears when you try to install the software on your PC, we suggest you perform the following operations:

- empty the Windows temporary files folder: TEMP
- empty the temporary Internet files folder.
- empty the desktop recycle bin.
- check that you have sufficient disk space on your hard drive for the installation (4 GB).
- create a temporary folder on your PC's hard disk: for example: VMX970TEMP
- copy the DVD-ROM into that folder.
- while installing, disable the anti-virus software on the PC.
- click on the "Setup" program to start the installation procedure.
- follow the instructions on the screen.

Once the software is successfully installed, delete the temporary folder and its contents from your PC's hard disk.

---

**The device does not recharge when it is connected in the car:**

Check that the cigarette-lighter socket and the mini USB socket are properly connected and that the cable diode light is on.

---

On the ViaMichelin GPS Navigation web site you will find other tips and advice as well as user manuals, information, updates, patches, etc. to help you get the best out of your ViaMichelin Navigation X-970:

<http://www.ViaMichelin.us> > GPS Navigation > Support

## 16\_USER RIGHTS AND WARRANTIES

Please read carefully the following terms and conditions prior to using the ViaMichelin portable navigation system that you have purchased.

Use of the software provided with this system is subject to a licence granted by ViaMichelin, and/or other suppliers, to the initial buyer, i.e., the end-user (hereinafter “You”), for his/her personal use, in accordance with the following software licensing agreement.

This device complies with Part 15 of the FCC Rules. Operation is subject to the following two conditions: (1) this device may not cause harmful interference, and (2) this device must accept any interference received, including interference that may cause undesired operation.



### 16.1 Software Licensing Agreement

---

Please read this end-user license agreement carefully.

Breaking the seal or opening the sleeve of the DVD-ROM or memory card or pressing the “**I agree**” button for pre-installed or downloaded software means that you accept the terms and conditions of this agreement. If you do not accept the terms and conditions of this agreement, please return the unused and complete ViaMichelin Product (including hardware, software, accessories and documentation, with packaging) to your retailer within no more than thirty (30) days following your purchase in order to obtain a full refund. The sales receipt shall be proof of purchase.

#### 16.1.1 Software covered

---

This agreement applies to the ViaMichelin Navigation software and to other software provided by ViaMichelin or by third parties with the ViaMichelin Product, and their accompanying documentation (hereinafter the “**Software**”), whether the **Software** are pre-installed on the navigation appliance, provided on a DVD-ROM or memory card, or obtained by downloading.

This agreement also applies to the contents integrated into the **Software** (data, databases, programs...) supplied by ViaMichelin or by third parties (hereinafter the “**Data**”)

#### 16.1.2 License

---

ViaMichelin and/or its suppliers grant you a limited, non-exclusive license to use the **Software** and **Data** in accordance with the following conditions and limitations.

#### 16.1.3 Intellectual property rights

---

The **Software** and **Data** are protected by copyright, intellectual property right regulations and by provisions of international treaties. Any breach of these rights shall constitute copyright infringement. ViaMichelin and its suppliers shall retain all rights that are not expressly granted.

#### 16.1.4 Restrictions on use

---

**You** are only authorized to use the **Software** and **Data** in conjunction with the ViaMichelin Product and the accessories dedicated to the ViaMichelin Products. Under no circumstances may the **Software** and **Data** be used with any other equipment or accessories.

You are not authorized to reproduce, modify, adapt, decompile or disassemble the **Software**, perform reverse engineering or use the **Software** with another device. ViaMichelin will provide you, upon written request, with the information necessary for the **Software** to be interoperable with other programs in accordance with the statutory provisions in force.

You may make a back-up copy of the **Software** solely for the purpose of restoring the original **Software** in the event it is accidentally corrupted. You must reproduce all the information regarding copyright and any other information relating to property rights shown on the **Software** and affix said information to any copy that you may make.

You are not authorized to extract, reproduce, represent, modify, adapt or extract the **Data** integrated into the **Software**. In particular, you are strictly prohibited from downloading the digital maps or **Data** contained in the **Software** and from transferring them onto other software and/or equipment.

You are not authorized to lease or lend the **Software** or to use it for business or professional purposes. You may not grant a sub-license to the **Software**, whether free of charge or for valuable consideration, or grant or transfer a license.

### 16.1.5 Term

---

This agreement shall be valid until it is terminated or ends for any reason whatsoever. It may be terminated at any time in the event you breach any of the provisions hereof. Immediately after its termination or end, you must return the **Software** and **Data** to ViaMichelin and/or destroy any copies in your possession.

### 16.1.6 Severability

---

If one of the provisions of this agreement proves to be invalid, unlawful or inapplicable, this shall not affect the validity, lawfulness and applicability of the other provisions.

### 16.1.7 Governing law and jurisdiction.

---

For sales in Canada, Mexico or the United States, this licensing agreement shall be governed by the law of the State of New York. For all other sales, this licensing agreement shall be governed by the law of France.



## 16.2 Warranty

---

This warranty is granted by ViaMichelin to the initial buyer, i.e., the end-user, of a ViaMichelin portable navigation device (hereinafter “**the ViaMichelin Product**”) for his/her personal use (hereinafter “**you**”).

### 16.2.1 Hardware

---

ViaMichelin warrants that the portable navigation appliance and the accessories thereto (hereinafter “**the Hardware**”) shall be free of any material or manufacturing defects, subject to normal use, for a period of one (1) year from the date of the initial purchase. ViaMichelin warrants that the media on which the **Software** is recorded shall be free from any defect during this warranty period.

### 16.2.2 Software

---

ViaMichelin warrants that the ViaMichelin Navigation **Software** and any other ViaMichelin branded **Software** provided with the **Hardware** (hereinafter “**the Software**”) shall comply with the specifications with which they are supplied, for a period of ninety (90) days from the date of the initial purchase.

### 16.2.3 Limit on the warranty.

---

1. This warranty does not apply to software or hardware produced by a third party and supplied with or incorporated into the ViaMichelin portable navigation system. ViaMichelin does not provide any warranty on behalf of said third parties. The hardware and software produced by third parties are covered by a warranty from their supplier or licensor.
2. This warranty does not apply to normal wear and tear to the **Hardware** and **Software**.
3. This warranty does not cover (i) material damage to the surface of the portable navigation appliance including cracks and scratches on the screen or the outer case, (ii) damage caused by incorrect use or use that does not comply with the instructions, negligence, or an attempt to repair or modify the product, (iii) damage caused by fire, damp or leaks, exposure to a source of heat, fluctuations in voltage, natural disasters or other risks, (iv) or damage caused by the use of the ViaMichelin Product with other hardware and/or software than those it is sold with.
4. This warranty does not include a warranty that the operation of the **Software** shall be uninterrupted and free from error. Errors in calculation may occur due to the fact that the **Software** is used in an external system or due to the conditions of the local environment. Any warranty as to the reliability, accuracy, completeness and comprehensiveness of the data included in the **Software** is expressly excluded. ViaMichelin and its suppliers use the utmost care in selecting and updating the cartographic and thematic data included in the **Software**. However, on the date the **Software** is acquired or used, certain data included in the **Software** may have been modified without ViaMichelin or its suppliers having been informed of this.
5. This warranty does not cover real time traffic information services that you may access using your ViaMichelin portable navigation system, subject to availability of these services in the country in which you are travelling. Such services are provided under the sole responsibility of the respective providers, which may be private or public entities. No warranty as to the accessibility or availability of such services is provided. Any warranty as to the reliability, accuracy, comprehensiveness or real-time updating of any information, messages or warnings sent via these services is also excluded.

#### 16.2.4 Remedies

In the event of a hidden defect of which ViaMichelin is informed during the warranty period, your sole remedy shall be to obtain the repair or replacement of the **Hardware** and/or the **Software**, solely at ViaMichelin's discretion and at its expense. If ViaMichelin cannot reasonably repair or replace the product, ViaMichelin may, solely at its discretion, refund to you the purchase price paid for the product. Replaced parts or products may be new or refurbished or versions that are comparable to the defective ViaMichelin product. ViaMichelin warrants all replaced **Hardware** and/or **Software** for a period of ninety (90) days from the date of shipment or until the end of the original warranty period if this is later.

#### 16.2.5 Implementation of the warranty.

To implement this warranty, you should contact the retailer you purchased the ViaMichelin product from and return the **Hardware** and/or **Software** to it during the applicable warranty period, following the instructions the retailer will give you. Dated proof of the initial purchase will be required.

#### 16.2.6 Exclusions from the warranty.

This warranty excludes all other express, implicit or statutory warranties, conditions and terms, including merchantability warranties, suitability for a specific use, accuracy, compliance with the description, regarding satisfactory quality, the absence of any virus in the **Software** and non-copyright infringement.

However, no provision of this warranty shall affect your statutory rights.

#### 16.2.7 Limitation of responsibility and liability.

Insofar as this is allowed by the applicable regulations, ViaMichelin and/or its suppliers shall under no circumstances be responsible for any direct and/or indirect damage, special or subsequent damage, in particular, for information purposes but not limited to, the loss of earnings or profit, loss of business, loss of data and loss of software, or of hardware, including the costs of recovery, reproduction or repairs following the above-mentioned loss, caused by the use of and/or the impossibility of using the ViaMichelin product even if ViaMichelin and/or its suppliers have been informed of the possibility of said damage. In any event, ViaMichelin's liability shall be limited to the price you paid for the ViaMichelin product.

#### 16.2.8 Severability

If one of the provisions of this warranty proves to be invalid, unlawful or inapplicable, this shall not affect the validity, lawfulness and applicability of the other provisions.

#### 16.2.9 Governing law and jurisdiction.

For sales in Canada, Mexico or the United States, this warranty agreement shall be governed by the law of the State of New York. For all other sales, this warranty agreement shall be governed by the law of France.

The United Nations Convention on Contracts for the International Sales of Goods is hereby excluded from application to this warranty agreement.

*Please note: If you use the ViaMichelin portable navigation system in your vehicle, you are responsible for positioning and using the navigation tools inside your vehicle so that the driver's visibility is not obstructed and the operation of safety systems is not hindered, and so as to avoid any risk of accident, injury and/or damage. You must obey road safety rules and only handle the ViaMichelin portable navigation system when your vehicle is stationary. ViaMichelin and/or its suppliers shall not be liable for any use of this product that may cause accidents or damage or that break the law, or for any direct or indirect consequences thereof.*



In accordance with the provisions of Directive 2002/96/EC of the European Parliament and of the Council of 27 January 2003 on waste electrical and electronic equipment (WEEE), this product should not be disposed of in household waste. It must be deposited at an appropriate collection point for the treatment, recovery and recycling of waste from electrical and electronic Hardware. By making this gesture for the environment, you are helping to save natural resources and protect human health.