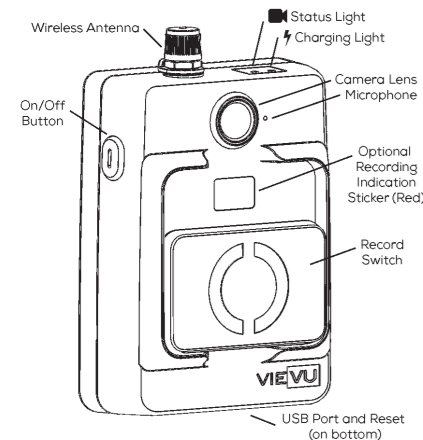


## LE5 BODY WORN CAMERA

The LE5 is an easy to operate wearable video camera designed specifically for law enforcement and security professionals.



## TECHNICAL SPECIFICATIONS

Video Resolution	1080 (FHD), 720 (HD) or 848x480 (SD)
Recording Speed	30 Frames Per Second
Recording Format	MPEG-4, H.264 Codec, AVI container
Lens Field of View	120, 95, 70 degrees selectable
Recording Life	Over 12 hours*
Storage Capacity	64 GB (non-removable)
Video Storage	56 hours at SD Resolution*
Weight (no clip)	4.9 oz
Dimensions (no clip)	2.52" x 3.40" x 1.10"
Input	DC 5V
Temperature	-4°F - 122°F

\* Environmental conditions may increase or decrease specification

## LED LIGHTS

### STATUS LIGHT

- Fast Blink Blue:** Camera is turning On.  
**Solid Red:** Camera is in smartphone mode. Camera will communicate with a smartphone.  
**Slow Blink Green:** Camera is recording video and audio.  
**Fast Blink Yellow:** Camera is low on battery power or memory is almost full. Camera is recording video and audio.  
**Solid Yellow:** Camera is not recording. Battery is out of power or memory is full.  
**Slow Blink White:** Camera is installing firmware. Do not turn the camera Off or disconnect it from power or the camera firmware update may fail and cause the camera to become unresponsive.  
**Solid Blue:** Camera is connected and in queue to download.  
**Slow Blink Blue:** Camera is downloading video.

### CHARGING LIGHT

- Solid Red:** Battery is charging.  
**Solid Green:** Battery is fully charged.

If Covert Mode is enabled, LED lights will not illuminate. Vibration will be enabled to indicate when the camera starts and stops recording.

## RECORDING INDICATION STICKER (OPTIONAL)

A red sticker is included that can be placed between the camera lens and microphone. This will give others a visual indication when the camera is recording video.

## NEED HELP?

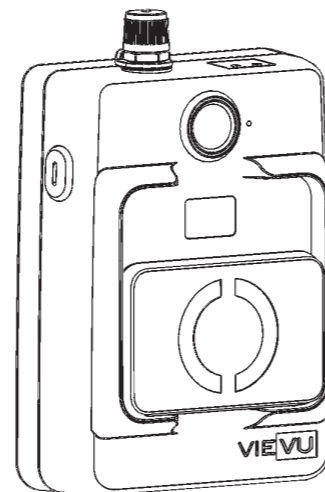
Phone: **888-285-4548**  
Email: **support@viewu.com**

Rev1

VIEVU  
645 Elliott Ave W Ste 370 Seattle WA 98119

9 CM

**SAFARILAND®**  
**VIEVU®**



**LE5™**

**INSTRUCTIONS**

12.5 CM

26.8 CM

## FIRST TIME SETUP

### 1. SELECT YOUR SOFTWARE

Go to [www.viewu.com/LE5setup](http://www.viewu.com/LE5setup) and complete the sign-up process. After sign-up is complete, you will receive a welcome email with additional information.

### 2. INSTALL SOFTWARE ON COMPUTER

The welcome email will contain a link to the software to install. Contact VIEVU support at 888-285-4548 if you need assistance.

### 3. ASSIGN THE CAMERA

**NOTE:** All cameras must be assigned to a user before recording video. Failure to assign the camera will prevent downloading videos.

Using the supplied cable, connect the 2 large USB connectors to the computer. Connect the small connector to the bottom of the camera. Click the 'Assign Camera' button in the software. For complete steps, consult the User Guides found in the welcome email.

## USING THE CAMERA

### CHARGING THE BATTERY

Before use, the camera must be fully charged. An optional wall charger is available for purchase at [www.viewu.com/accessories](http://www.viewu.com/accessories).

- Using the supplied cable, connect the 2 large USB connectors to the computer. Connect the small connector to the bottom of the camera.
- The charging light is solid red while the battery is charging. The charging light is solid green when the battery is fully charged.

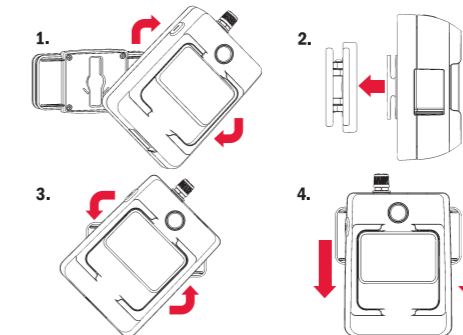
## MOUNTING OPTIONS

The camera is fitted with a ClipLock mounting adapter and a spring clip. Additional mounting options are available at [www.viewu.com/accessories](http://www.viewu.com/accessories).

### USING CLIPLOCK™

ClipLock is an interchangeable clip attachment system. Visit [www.viewu.com/cliplock](http://www.viewu.com/cliplock) for a video demonstration.

To use, rotate the camera 90 degrees to align the T-adapter with the receiver slot on the clip. Insert the adapter into the clip. Turn the camera back 90 degrees. Slide the camera down into the locked position.

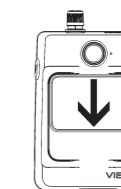


### WEARING THE CAMERA

The camera must be worn with the LED lights facing up. The ideal position to attach the camera is level with the sternum but will vary depending on the user.



## RECORDING VIDEO



**START RECORDING**  
Slide the record switch down.  
The camera status light will blink green.



**STOP RECORDING**  
Slide the record switch up.

## CONNECTING TO A SMARTPHONE

To connect the camera to a smartphone, the camera must be turned On. Consult the User Guides found at [www.viewu.com/support](http://www.viewu.com/support) for complete steps for your device.

## DOWNLOADING VIDEO

### CABLE DOWNLOAD

- Using the supplied cable, connect the 2 large USB connectors to the computer. Connect the small connector to the bottom of the camera.
- Login to the VIEVU software to download. Consult the User Guides found at [www.viewu.com/support](http://www.viewu.com/support) for complete steps.

### DOCKING STATION DOWNLOAD

Insert the camera into an available port on the docking station. The status light will turn blue when the camera is in queue to download. The light will change to blinking blue when video files are being downloaded. The light will turn off when the download process is complete.