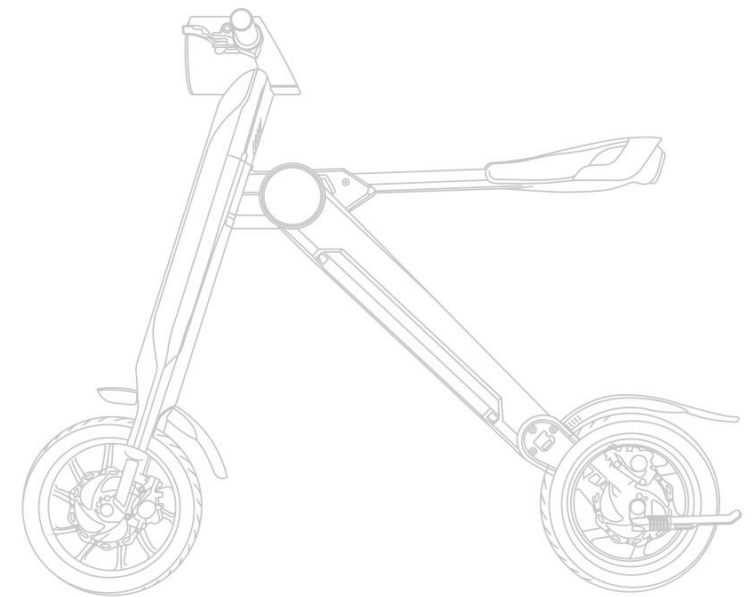


SMART E-SCOOTER

MANUAL

Fashionable/Portable/Smart



Product Manual

This manual contains important instruction for safety usage, please be patient to read it completely before using the product. In the package, there are: one E-scooter, recharger, tool kit, operate manual, warranty card, certificate of quality

Catalogue

Part One E-scooter Introduction

- 1.1 Product FeaturesP01
- 1.2 Product SpecificationsP02

Part Two Product Operation

- 2.1 Intelligent digital displayP03
- 2.2 Product functionP04
- 2.3 How to use.....P05-06
- 2.4 How to foldP07-08
- 2.5 Intelligent alarmP09-10
- 2.6 Charge your e-scooterP11
- 2.7 Charge your phone, ipad.....P11
- 2.8 Bluetooth speakerP12
- 2.9 Cruise mileage displayP12
- 2.10 Cruise control settingP12

Part Three Safety usage

Part Four Maintenance

Part Five After-sales service

1.1 Product Introduction

We are dedicating to producing the most fashionable and portable intelligent scooter for short trip. With tridimensional K shape design, fashionable and unrestrained color theme, top level technology and unique craftsmanship make it perfect in quality. With foldable and portable innovative design, our scooters become the prior choice for office staffs, students, white-collar workers' short trip. Insisting on "Detail Matters", we equip the E-scooter with considerate devices in every detail which makes your trip joyful.

Product features:

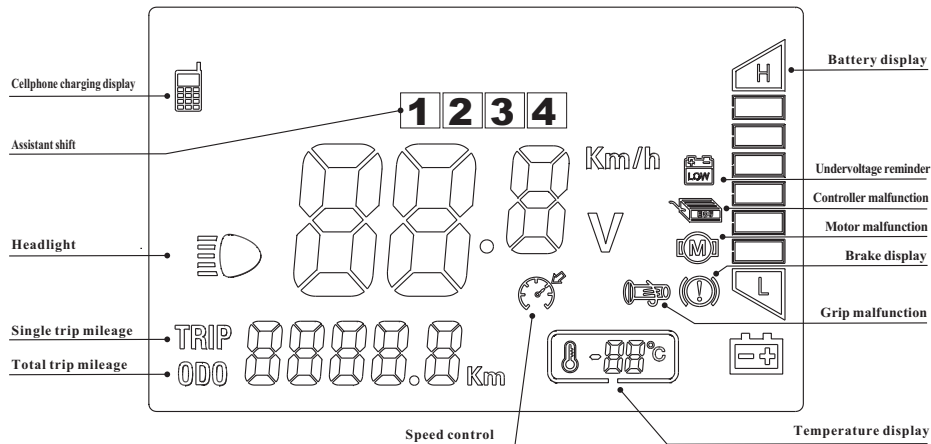
- 1.USB charging interface:
- 2.Water-proof stereo bluetooth speaker
- 3.Super endurance ability, high performance battery imported from SAMSUNG, LG company.
- 4.Speed control system
- 5.LED headlight
- 6.Front & rear brand disc brake
- 7.Brake to power-off protector

1.2 Product Specifications

ITEM	SPECIFICATION
Unfold size	1200mmX615mmX985mm
Fold size	1235mmX536mmX270mm
Weight	≤18kg
Loading weight	≤120kg
Max speed	25km/h
Endurance mileage	<input type="checkbox"/> 35-45km <input type="checkbox"/> 45-55km
Charging time	3-5h
Battery capacity	<input type="checkbox"/> 8.8AH <input type="checkbox"/> 10.4AH
Battery type	lithium
Nominal voltage	36V
Rated power	240w
Motor type	Brushless gear motor
Motor rated torque	6.6N.M
Electricity consumption for one charging round	0.3 degree
Overcurrent protection	13A 1A
Controller under-voltage protection	30 1V
Controller power tube number	6tubes

Part Two Product Operation

2.1 Intelligent digital display



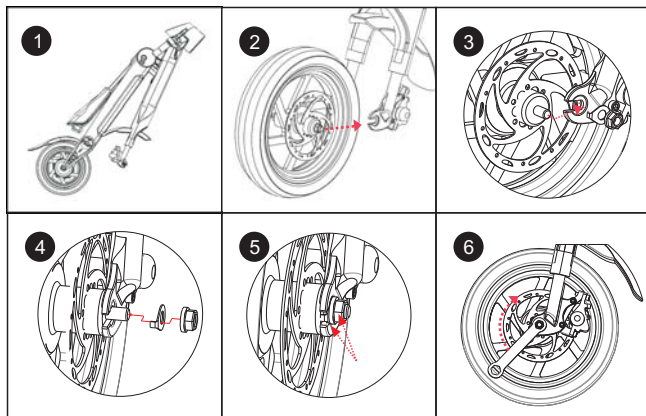
2.2 Product function

1. Foldable handle bar: innovative foldable design clip to decrease room capacity.
2. Big LED headlight: effectively increase brightness to realize visibility.
3. Brake to power-off: power-off when brake to ensure safety.
4. LCD display: speed, mileage, and temperature etc. can be showed.
5. Grip: eco-friendly, comfortable to hold.
6. Genuine leather saddle: more comfortable and healthy.
7. Rear reflector: guarantee safe during night driving.
8. Imported SAMSUNG, LG battery: fast recharging, environment friendly, long life-span
9. Foldable clip: strictly and appropriately control, solid and durable
10. Power switch
11. Taiwan Cheng shin/Kenda tyre: automobile standard tyre, top-level anti-friction material, safety and anti-explosion.
12. Guard: protect both front and rear, avoid mud to splash on scooter or user.
13. Foldable pedal: compliance with ergonomics, comfortable and convenient.
14. Front & rear disc brake: the safest disc brake system
15. Kickstand: same material as the body part, strong support.
16. German brushless gear motor: strong power, environment friendly, low-consumption.
17. Remote key: mini and easy to carry

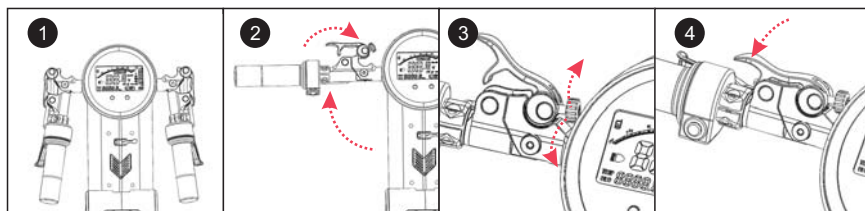


2.3 How to use

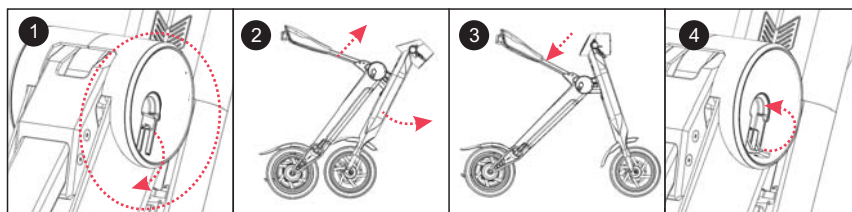
1. Open the package, fix the front tyre with equipped tool (as shown)



2. Open the handle bar as shown steps



3. Stretch the handle bar and unfold the scooter (as shown)



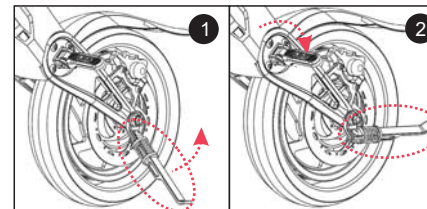
1 Pull open as the arrow direction shows

2 Lift the saddle bar , the front part will fold naturally

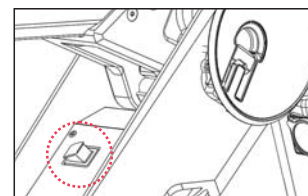
3 Press downward the saddle

4 Push close as the arrow direction shows




4. Unfold the pedal and kickstand as shown



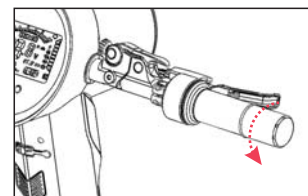
5. Switch on the battery as shown



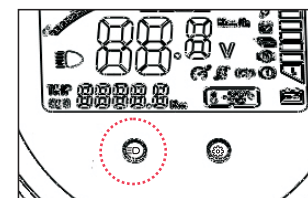
6. Press remote key to unlock and start the power

Steps:  +  +  Press the "unlock" button once, then press "power" button twice

7. Slowly rotate the right grip (as shown), then start the scooter.



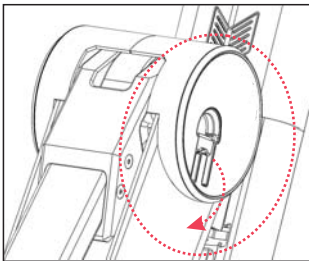
8. Press the left button (as shown), the night light will turn on.



2.4 How to fold

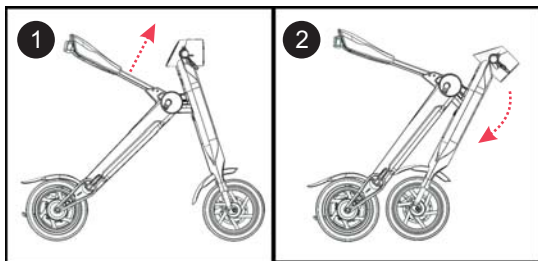
Fold

1. Open the folding switch firstly (as shown)

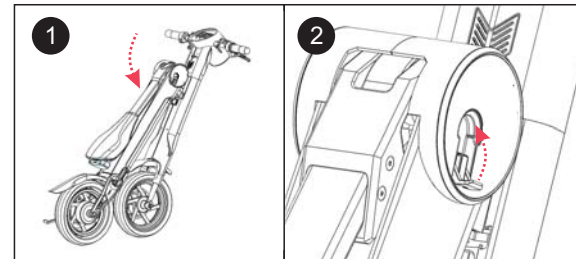


Pull open as the arrow direction shows

2. Lift the saddle bar, and the front wheel will fold naturally (as shown)

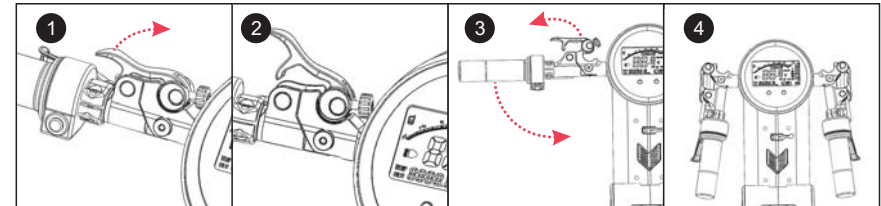


3. Press the saddle bar into the frame slot. Folding action is completed when hearing a click sound, (as shown)



Push close as the arrow direction shows

4. Switch on the handle bar, move it out from arc clip, and press the grip downward (as shown)




5. Full folding actions are completed (as shown)





2.5 Smart Alarm

2.5.1 How To Set Burglar Alarm

Park the scooter and press the key  , it's on the alert with the sound of horn. The horn will sound 15 seconds continuously when the scooter is started or touched.


2.5.2 How To Cancel The Alarm

To exit the alert by pressing the key , which will be done when the horn sounds. Press the key  to start remote control and the scooter will get power off.

2.5.3 How to Start the Remote Control

Press the key  twice, the lock unlocks when the horn sounds


2.5.4 How to Position the scooter

Press the key  on the alert , the horn will sound 5 times to indicate the position of scooter. Press any key can exit the status.



2.5.5 How to set the Alarm (Alternative)

The system sounds to remind the owner to set the alarm after the scooter parked for 5 seconds.

2.5.6 How to Adjust the Sensitivity Alternative

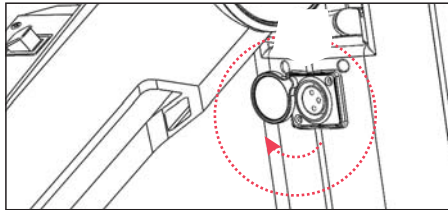
Park the scooter and press the key  long till horn sounds continuously. The first alarm sound is the first grade sensitivity(the top), the second sound is the second grade There are 4 grades in all and the 4th one is the lowest.

2.5.7 Guard Against Robbery Function

If you are robbed while driving, please press the key  long within the range of remote working distance , the scooter will be powered off and freed . Press the key  can restart the scooter .

2.6 How To Charge

1. The red indicating light shines when the charger connects the electricity power .



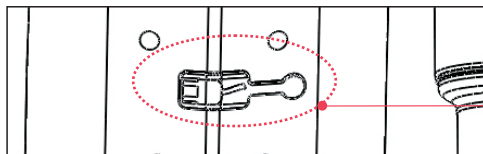
Turn the battery dustproof cover by 90 degree around arrow direction and you will see the charge interface

Remarks: Please use our exclusive charger

- 2. Standard charging time : 3-5 hours , Temperature : About 25 °C.
- 3. The charger is equipped with protector of overcurrent and the charging current should below 3A. Heavy current will damage the protector or shorten the battery's lifespan.

2.7 Charge for phone & Ipad

The E-scooter is equipped with charge interface for phone & Ipad in case of outdoor power urgency.



The position of phone charge interface

2.8 Bluetooth Speaker

The bluetooth speaker can be connected with IOS & Android system cell phone (only 1 cell phone for once).Its working range is 0-8m, and within 5m is efficient.

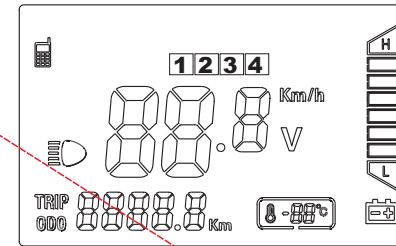


The position of bluetooth speaker

2.9 How to Check the Endurance Mileage

2.9.1 You ca choose 1,2,3 and 4 shift by pressing the button shortly in starting up condition.Different shift will make you feel the different passion for starting up.

2.9.2 You can reset the scooter to factory setting by pressing the button long for 30 seconds, which is finished by showing a new screen.

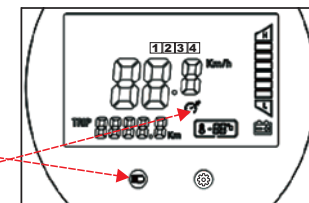


2.10 Cruise Control Setting

2.10.1 Don't have to turn the grip by hand always to keep the scooter moving at constant speed.

Start:Press the "light"key long during driving.
End:Rotate the speed grip or jam the power brake or press the "light"key long.

Entering:Press the (headlight key) long during accelerate driving,then start cruise control system and sign of appear.



Exiting:Shutdown system or make a brake.

Part three: Safety Usage

Please learn the safety caution carefully.

3.1 Important (Application environment)

1. Don't overspeed in downhill running. Don't use front brake first during high speed driving in order in to avoid leaning forward .
2. Don't drive on rainy days.
3. Don't drive in deep water.
4. Only authorized chargers and parts. Or no guarantee will be given if dangers happen.
5. Don't disassemble or refit the scooter. Or we will not be responsible for above situation ,and even worse, you may lose guarantee promise. Please ask local agency or appointed maintenance center for help if necessary.

3.2 Attention for charging

1. Charge in safe place where children can't reach.
2. Charge fully before initially use
3. No other brand charger ,other type of battery is forbidden either .
4. The charger contains high-voltage circuit, don't dismount arbitrarily.
5. Avoid liquid or metal bead infiltrating the charger .Don't drop and crash in order to avoid damage.
6. Don't cover anything in charging.
7. The charger should be used in dry & ventilative environment.
8. Stop charging when it is smelly or excess temperature, and send it to agency for repair immediately

3.3 Attention for battery

1. Keep away from fire and flammable , explosive and corrosive gas .
2. Don't dismount the battery arbitrarily in order to avoid damaging inner parts.
Don't damage the label on battery in order to avoid losing guarantee.
No other brand charger ,other type of battery is forbidden either .

Part four Maintaining

Maintaining determines the lifespan of smart E-scooter, please learn maintaining details well

4.1 Basic maintaining

1. Please make sure the gas pressure reaches 280kpa before using.
2. Charge the lithium battery fully to store, charge and discharge fully every two months if it is unused.
3. Form good habits to charge everyday. Charge in time before allowed minimum voltage in order to guarantee battery's life.

4.2 Regular maintaining and self-checking

1. Check if screws of front and back wheels are locked firm.
2. Check if the tyre is worn or dehisced, and check if the driving system is smooth.
3. Check if the connecting terminal is normal. Check if zipper of the brake cable can be used in lubrication situation.

4.3 Cleaning and maintaining

1. Do not wash by water cannon in order to avoid damaging inner parts or circuitry.
2. Use neutral cleaner and wipe the stain on the surface of lacquer or plastic parts softly, then wipe with dry clean cloth.
3. Do not inject oil to disc, brake or rim.

Part Five After-sales Service

5.1 Rules of warranty

(Company only be responsible for certified battery)

No.	Description	Warranty period	Specification
1	Motor of back wheel	12 months	It can be changed a new one within 12 months(3 months turnover period). Maintaining service is available with 15~36 months
2	Battery	12 months	Battery capacity < Original 60%
3	Frame	24 months	If there are weld lost, broken, and cracking causing out of tracking, we can change for a new one, but modification and man-made damage are exceptions.
4	Frame of front wheel	12 months	If there are flaws and serious burst damage, we can change for a new one, but overweight and man-made damage are exceptions.
5	Cushion	6 months	If there are leather aging, broken and baseboard broken, we can change for a new one, not include overweight and man-made damage.
6	Controlor:Charger	12 months	If there is function problem and can not be repaired, we can change for a new one.
7	Headlight:Alertor	6 months	If there is function problem and can not be repaired, we can change for a new one.
8	Front fork(including shocking proof)and back fork	12 months	If there are weld lost, broken, and cracking causing out of tracking, we can change for a new one, but modification and man-made damage are exceptions.
9	Meter	12 months	If there is function problem and can not be repaired, we can change for a new one.

5.2 warranty card

Client: _____ **Cell phone number :** _____

Address : _____

Distributor: _____ **Operator:** _____

Purchase date : _____ **Quality inspection number :** _____

Kindly notice : In order to provide good after-sales service, please don't tear up or alter the outside carton barcode, or we will not provide maintenance service.

stick barcode here

Description of damage	Details of repairing	Technician	Date

FCC

Caution: The user is cautioned that changes or modifications not expressly approved by the party responsible for compliance could void the user's authority to operate the equipment.

This device complies with Part 15 of the FCC Rules. Operation is subject to the following two conditions: (1) this device may not cause harmful interference, and (2) this device must accept any interference received, including interference that may cause undesired operation.

NOTE: This equipment has been tested and found to comply with the limits for a Class B digital device, pursuant to Part 15 of the FCC Rules. These limits are designed to provide reasonable protection against harmful interference in a residential installation. This equipment generates, uses and can radiate radio frequency energy and, if not installed and used in accordance with the instructions, may cause harmful interference to radio communications. However, there is no guarantee that interference will not occur in a particular installation.

If this equipment does cause harmful interference to radio or television reception, which can be determined by turning the equipment off and on, the user is encouraged to try to correct the interference by one or more of the following measures:

- Reorient or relocate the receiving antenna.
- Increase the separation between the equipment and receiver.
- Connect the equipment into an outlet on a circuit different from that to which the receiver is connected.
- Consult the dealer or an experienced radio/TV technician for help.

This equipment complies with FCC radiation exposure limits set forth for an uncontrolled environment. This transmitter must not be co-located or operating in conjunction with any other antenna or transmitter.

“WARNING---Keep away from moving parts”

Make the trip more fashionable and the city more younger



Which kind of LOHAS are you ?

I take gentle and natural exercise

I would like to close the nature , favor organic trip

I like to be different

And prefer to make life different

This is my way of thinking

It is a new mode for low carbon trip.

Make the change happen.