



User's manual
DM223/DM223-2

Safe & Sound®
Digital Audio Monitor



Congratulations

on purchasing your new VTech product. Before using this product, please read **important safety instructions**.

For support, shopping, and everything new at VTech, visit our website at www.vtechphones.com.

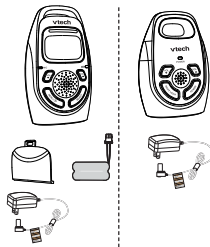
Register online to get an additional 3-month warranty!

Visit www.vtechphones.com.

Registration
Register your product online for enhanced warranty support.

Product news
Learn about the latest VTech products.

What's in the box



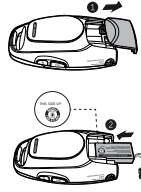
1 set for DM223;
2 sets for DM223-2

Install the battery

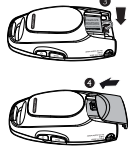
The parent unit runs on rechargeable battery or AC power. To continuously monitor your baby, make sure you use both battery and AC power at the same time. With the battery alone, the parent unit can cordlessly run for a short time only.

- NOTES**
- Use only the battery supplied with this product.
 - If the parent unit will not be used for a long time, disconnect and remove the battery to prevent possible leakage.
 - Without AC power charging, the battery gradually discharges, even when the parent unit is switched off.

Install the battery as shown below.



- NOTE**
- Make sure the supplied rechargeable battery with the label **THIS SIDE UP** facing up.



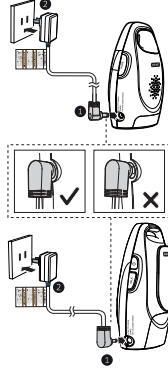
Replace the battery

To replace the battery, unplug the battery connector from the socket, and then pull the battery out of the battery compartment. Follow the steps above to install the battery.

Connect and charge the battery

- NOTES**
- Use only the parent unit power adapter or the baby unit power adapter supplied with this product.
 - Make sure the electrical outlets are not controlled by wall switches.
 - The parent unit power adapter and baby unit power adapter are intended to be correctly oriented in a vertical or floor mount position. The prongs are not designed to hold the plug in place if it is plugged into a ceiling, under-the-table or cabinet outlet.
 - Make sure the parent unit, the baby unit and the power adapter cord are out of reach of children.

Connect the baby monitor



Charge the parent unit battery

Once you have connected the parent unit or installed its battery, it powers on automatically. The battery icon indicates the battery status (see the following table).

- NOTES**
- The parent unit battery is fully charged after 11 hours of continuous charging.
 - It takes longer to charge the battery when the parent unit is turned on. To shorten the charging time, turn the parent unit off while charging.
 - The standby time varies depending on the sensitivity level you set, your actual use and the age of the battery.

Battery indicators	Battery status	Action
The battery icon is off.	No battery is installed. The parent unit can be used only when it is connected to AC power.	Install the parent unit battery. Charge without interruption (at least 30 minutes).
LOW BATTERY and	The battery has very little charge and may be used for only a short time.	Charge without interruption (about 30 minutes).
The battery icon becomes solid	The battery is fully charged.	To keep the battery charged, connect it to AC power when not in use.

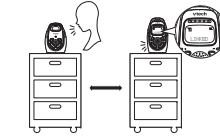
Before use

- NOTE**
- This baby monitor is intended as an aid. It is not a substitute for proper adult supervision, and should not be used as such.

You may test the baby monitor before initial use, and at regular times thereafter. Place the parent unit and the baby unit in the same room to test the product.

Test your audio monitor

- Speak towards the microphone of the baby unit. You will hear the sound at the parent unit, and see the visual sound indicators' light up.



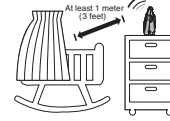
- TIP**
- Increase the speaker volume of the parent unit if you cannot hear the sounds transmitted from the baby unit.

- NOTES**
- Make sure the baby unit is at least 1 meter (3 feet) away from the parent unit.
 - If no connection can be established, the parent unit displays **NOT LINKED** and **T** flashes.

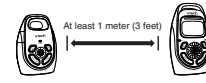
Positioning the baby monitor

- CAUTION**
- Keep the baby unit out of the reach of the baby. Never place or mount the baby unit inside the baby's crib or playpen.
 - Do not expose the baby unit to extreme heat or direct sunlight.

- Place the baby unit at least 1 meter / 3 feet away from your baby.



- Place the parent unit at least 1 meter / 3 feet away from the baby unit.



- NOTE**
- If you experience audio feedback on either the parent unit or baby unit, move the parent unit further away until there is no more audio feedback; or press **VOL. ▾** on the parent unit to lower the audio feedback sound.

Operating range

The operating range of the baby monitor is up to 300 meters (1,000 feet) outdoors or 50 meters (160 feet) indoors. The actual operating range may vary depending on the environmental conditions, and other interferences such as walls, doors, and other obstructions.

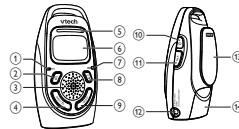
Overview

Baby unit overview



1	VOL. ▾ • Press to decrease the speaker volume.
2	Microphone
3	NIGHT LIGHT • Press to turn the night light on or off.
4	Night light • On when night light is turned on.
5	POWER light • On when the baby unit is turned on.
6	VOL. ▲ • Press to increase the speaker volume.
7	POWER • Press and hold to power on or off.
8	PAGE • Press to start or stop paging parent unit.
9	Power jack
10	Speaker

Parent unit overview



1	Microphone
2	VOL. ▾ • Press to decrease the speaker volume. • While in a menu, press to scroll down.
3	Speaker
4	MENU • Press to enter the menu while idle. • While in a menu, press to return to the previous screen. • Press to return to idle screen.
5	Visual sound indicator ○ ○ ○ ○ ○ The visual sound indicator has two functions. One is to show the sound level detected by the baby unit. The other one is to show the volume level during speaker volume setting. Sound level detected by the baby unit • ○ ○ ○ ○ ○ One to three green lights indicate a moderate sound level detected by the baby unit. • ○ ○ ○ ○ ○ Additional red lights indicate a higher sound level detected by the baby unit (e.g. baby crying loudly). Speaker volume level • ○ ○ ○ ○ ○ One to three green lights indicate Level 1 to Level 3 of the speaker volume setting. • ○ ○ ○ ○ ○ Additional red lights indicate Level 4 to Level 5 of the speaker volume setting.
6	LCD panel
7	Battery level indicator • Light on when the battery is being charged. • Light flashes when the battery is low and needs charging. • Light off when no battery is installed.
8	VOL. ▲ • Press to increase the speaker volume. • While in a menu, press to scroll up.
9	SELECT • While in a menu, press to choose an item, or save a setting.
10	On/Off • Press and hold to power on or off. • While in a menu, press to return to idle screen.
11	TALK • Press and hold to talk to the baby unit; release to stop talking. • While in a menu, press to return to idle screen.
12	Power jack
13	Belt clip
14	Battery compartment cover

Parent unit display icons

	Connection status • displays when strong signal strength is detected between the baby unit and the parent unit. • displays when moderate signal strength is detected between the baby unit and the parent unit. • displays when the weak signal strength is detected between the baby unit and the parent unit. • flashes when the link between the baby unit and the parent unit is lost.
	Night light auto-on • On when the night light auto-on feature is turned on.
	Sound alert • Displays when the sound alert of the parent unit is turned on. • Flashes when there are loud sounds detected from the baby unit and the parent unit is in mute.
	Vibration alert • Displays when the vibration alert of the parent unit is turned on. • Flashes when there are loud sounds detected from the baby unit.
	Mute • Displays when the volume is turned off.
	Battery status • animates when the battery is charging. • displays solid when the battery is fully charged. • flashes when the battery is charged with AC adaptor, or charging failure. • flashes when the battery is in low level and needs charging. • No battery icon displays when there is no battery installed.

Parent unit display screen messages

CHECK BATT	The battery charging performance is abnormal, the light is off and the icon flashes on the screen.
LINKED	The link between the parent unit and the baby unit is established.
LOW BATTERY	The parent unit uses only the rechargeable battery pack and it needs to be recharged.
NOT LINKED	The link between the parent unit and the baby unit is lost continuously for over 10 seconds.
PAGING	All idle parent units are being paged by the baby unit.
SAVED	Your selection has been saved.
SEARCHING	The parent unit is out of range of the baby unit, or the baby unit is out of power.
TALK	The parent unit is talking to the baby unit.
TALKBACK	The other parent unit is talking to the baby unit.

Using the baby monitor

Power on or off the baby unit

- Press and hold **POWER** to power on the baby unit. The power light turns on.
- Press and hold **POWER** again to power off the baby unit. The power light turns off.



Power on or off the parent unit

- Press and hold **On** to power on the parent unit. The screen turns on.
- Press and hold **On** again to power off the parent unit. The screen turns off.



- NOTE**
- The parent unit powers on automatically once it is connected to AC power or battery installed. The baby unit also powers on automatically once connected to AC power.

Adjust the speaker volume for baby unit

- Press **VOL. ▲** or **VOL. ▾** on the baby unit at any time.

Adjust the speaker volume for parent unit

- You can adjust the speaker volume from **VOLUME 1** to **VOLUME 5**, or turn it off. The speaker volume is preset to **VOLUME 3**.
- Press **VOL. ▲** or **VOL. ▾** when the parent unit is not in use.

When the speaker volume is set to off, the screen displays

Adjust the sound sensitivity of the baby unit

You can choose to hear sounds from the baby unit all the time, or to hear sounds that exceed a certain level. You can use the parent unit to adjust the microphone sensitivity of your baby unit. The higher the sensitivity level, the more sensitive the baby unit is in detecting sounds for transmitting to the parent unit. The sound sensitivity is preset to **LEVEL 5**.

Sound sensitivity table for reference

Display	Sensitivity	Description
Level 5	High sensitivity	High sensitivity level The parent unit speaker is constantly on, and you will hear all sounds (including background noises) from your baby's room.
Level 4	Medium high sensitivity level	Medium high sensitivity level The parent unit speaker turns on for soft babbling and louder sounds from your baby. It remains quiet when your baby sleeps soundly.
Level 3	Medium sensitivity level	Medium sensitivity level The parent unit speaker turns on for loud babbling and louder sounds from your baby. It remains quiet when your baby makes soft sounds.
Level 2	Medium low sensitivity level	Medium low sensitivity level The parent unit speaker turns on for crying and louder sounds from your baby. It remains quiet when your baby makes soft sounds.
Level 1	Low sensitivity level	Low sensitivity level The parent unit speaker turns on for loud crying or screaming sounds from your baby. It remains quiet when your baby makes soft sounds.

- Press **MENU** when the parent unit is not in use.
- Press **SELECT**.
- Press **VOL. ▲** or **VOL. ▾** to choose the sensitivity level.
- Press **SELECT** to confirm your selection. The screen displays **SAVED** and you hear a confirmation tone.

- NOTE**
- To enter the sensitivity menu of the parent unit, the baby unit must be turned on.

Sound alert

Sound alert feature works only when the parent unit is in mute.

If you turn on the sound alert, the parent unit beeps when the baby unit detects sounds which light up four sound level indicators on the parent unit.

- When the sound alert of the parent unit is turned on, displays. The sound alert is preset to **OFF**.
- Press **MENU** when the parent unit is not in use.
 - Press **VOL. ▲** or **VOL. ▾** to choose **SOUND ALERT**, then press **SELECT**.
 - Press **VOL. ▲** or **VOL. ▾** to choose **ON** or **OFF**.
 - Press **SELECT** to confirm your selection. The screen displays **SAVED** and you hear a confirmation tone.

- NOTE**
- The sound alert setting on each parent unit is independent.

Vibration alert

You can turn on the vibration alert so that the parent unit vibrates when the baby unit detects sounds which light up four sound level indicators on the parent unit.

When the vibration alert of the parent unit is turned on, displays. The vibration alert is preset to **OFF**.

- Press **MENU** when the parent unit is not in use.
- Press **VOL. ▲** or **VOL. ▾** to choose **VIBE ALERT**, then press **SELECT**.
- Press **VOL. ▲** or **VOL. ▾** to choose **ON** or **OFF**.
- Press **SELECT** to confirm your selection. The screen displays **SAVED** and you hear a confirmation tone.

- NOTES**
- Each time you set the vibration alert to **ON**, the parent unit vibrates briefly after you press **SELECT**.
 - The vibration alert setting on each parent unit is independent.

Night light auto-on

You can turn on or off the night light by pressing the **NIGHT LIGHT** button manually on the baby unit. You can also use the parent unit to set the night light on the baby unit to automatically turn on whenever sounds are detected from the baby unit. When the night light auto-on setting is set to **YES**, displays. The default setting is preset to **NO**.

- Press **MENU** when the parent unit is not in use.
- Press **VOL. ▲** or **VOL. ▾** to choose **NIGHTLIGHT**, then press **SELECT**.
- Press **SELECT** to choose **AUTO ON**.
- Press **VOL. ▲** or **VOL. ▾** to choose **YES** or **NO**.
- Press **SELECT** to confirm your selection. The screen displays **SAVED** and you hear a confirmation tone.

- NOTES**
- To enter the night light menu of the parent unit, the baby unit must be turned on.
 - If the night light on the baby unit is already on, the night light will go off immediately when you change the night light auto-on setting from **YES** to **NO**.
 - If the night light on the baby unit is already on and the night light auto-on setting is **YES**, the night light on the baby unit will go off immediately after you press **NIGHT LIGHT** and the night light auto-on feature will become inactive for 5 minutes.
 - For night light triggered by baby's sound or turned on manually at the baby unit, it will automatically turn off after 15 minutes of silence.

- Language**
- You can select a language (English, French or Spanish) to be used in all screen displays. The language is preset to **English**.
- Press **MENU** when the parent unit is not in use.
 - Press **VOL. ▲** or **VOL. ▾** to choose **LANGUAGE**, then press **SELECT**.
 - Press **VOL. ▲** or **VOL. ▾** to choose **ENGLISH**, **FRANCAIS** or **ESPAÑOL**.
 - Press **SELECT** to confirm your selection. The screen displays **SAVED** and you hear a confirmation tone.

- NOTE**
- The language setting on each parent unit is independent.

