

Go to [www.vtechphones.com](http://www.vtechphones.com) to register your product for enhanced warranty support and the latest VTech product news.

VM342  
VM342-2

Safe & Sound®  
Full Color Video Monitor  
with Wide-Angle Lens



vtech®  
User's manual

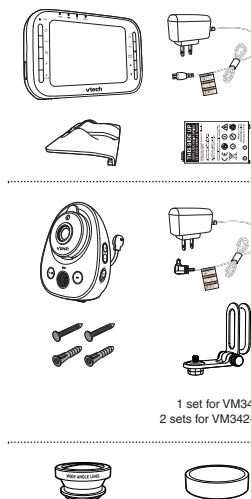
## Congratulations

on purchasing your new VTech product. Before using this product, please read **Important safety instructions**.

This manual has all the feature operations and troubleshooting necessary to install and operate your new VTech product. Please review this manual thoroughly to ensure proper installation and operation of this innovative and feature rich VTech product.

For support, shopping, and everything new at VTech, visit our website at [www.vtechphones.com](http://www.vtechphones.com).

## What's in the box



1 set for VM342  
2 sets for VM342-2

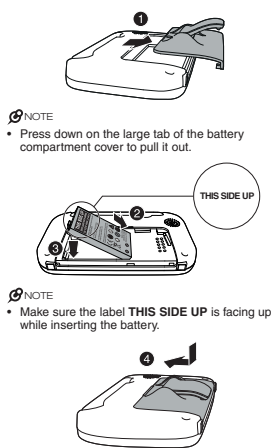
## Install the battery

The parent unit runs on rechargeable battery or AC power. To continuously monitor your baby, make sure you use both battery and AC power at the same time. With the battery alone, the parent unit can cordlessly run for a short time only.

### NOTES

- Use only the battery supplied with this product.
- The operating time for using the rechargeable battery is short. If you want to monitor your baby for a long time, we recommend you connect the parent unit to AC power.
- If the parent unit will not be used for a long time, disconnect and remove the battery to prevent possible leakage.

Install the battery as shown below.



### NOTE

- Press down on the large tab of the battery compartment cover to pull it out.

### NOTE

- Make sure the label **THIS SIDE UP** is facing up while inserting the battery.

## Replace the battery

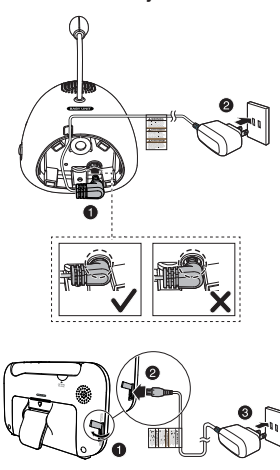
To replace the battery, press down on the large tab of the battery compartment cover and pull it out, then follow the steps above to install the battery.

## Connect and charge the battery

### NOTES

- Use only the power adapters supplied with this product.
- Make sure the electrical outlets are not controlled by wall switches.
- The power adapters are intended to be correctly oriented in a vertical or floor mount position. The prongs are not designed to hold the plug in place if they are plugged into a ceiling, under-the-table or cabinet outlet.
- Make sure the parent unit, the baby unit and the power adapter cords are out of reach of children.

## Connect the baby monitor



## Charge the parent unit battery

When you have connected the parent unit and installed its battery for the first time or after power outage, the parent unit powers on automatically. The battery icon indicates the battery status (see the following table).

### NOTES

- The parent unit battery is fully charged after 3 hours of continuous charging.
- It takes longer to charge the battery when the parent unit is turned on. To shorten the charging time, turn the parent unit off while charging.
- The standby time varies depending on the sensitivity level you set, your actual use and the age of the battery.

Battery indicators	Battery status	Action
The battery icon is off and displays.	No battery is installed but operates using AC power, or the battery has been installed incorrectly.	Install the parent unit battery. Charge without interruption (at least 30 minutes).
The screen displays <b>Battery low at Parent Unit</b> and The light flashes.	The battery has very little charge and may be used for only a short time.	Charge without interruption (about 30 minutes).
The battery icon becomes solid.	The battery is fully charged.	To keep the battery charged, connect it to AC power when not in use.

## Before use

### NOTE

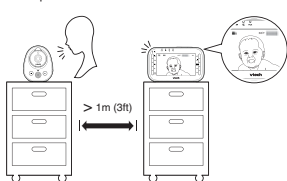
- This baby monitor is intended as an aid. It is not a substitute for proper adult supervision, and should not be used as such.

## Test your baby monitor

You may test the baby monitor before initial use, and at regular times thereafter.

### CAUTION

- For hearing protection, make sure the parent unit is more than 1 meter (3 feet) away from the baby unit. If you hear any high-pitched noise, move the parent unit further until the noise stops. You can also press **-VOL** on the parent unit to lower or mute the noise.



- Make sure your baby units and parent unit are on.
- The parent unit displays images from the baby unit.
  - Speak towards the baby unit microphone. You will hear the sound at the parent unit.
- If you have more than one baby unit, press **VIEW** on the top of your parent unit. The screen switches to other baby units. Then, repeat step 2.

### NOTE

- When the parent unit displays **No link to CAM #** (# represents the selected baby unit number), and the **LINK LED** light flashes, move the parent unit closer to the baby unit (observe the minimum distance of 1 meter/ 3 feet). You can also check if the baby monitor is connected to a live power socket and switched on.

### TIP

- Increase the parent unit speaker volume if you cannot hear the sounds transmitted from the baby unit.

## Positioning the baby monitor

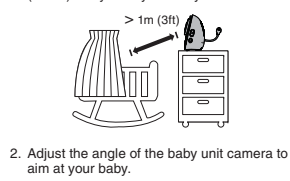
### CAUTION

- Keep the baby units out of the reach of your baby. Never place or mount the baby units inside the baby's crib or playpen.

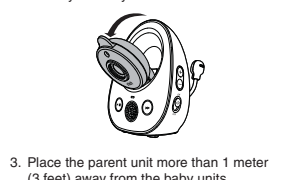
### NOTE

- To avoid interference from other electronic devices, place your baby monitor far away from devices such as wireless routers, microwaves, cell phones and computers.

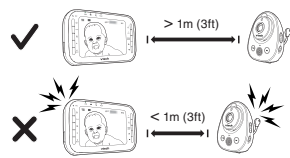
- Place the baby units more than 1 meter (3 feet) away from your baby.



- Adjust the angle of the baby unit camera to aim at your baby.



- Place the parent unit more than 1 meter (3 feet) away from the baby units.



### CAUTION

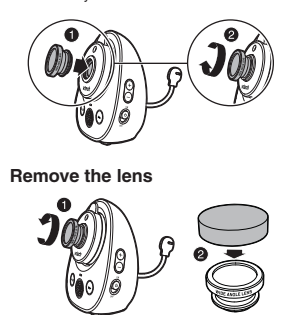
- The default volume of your parent unit is level 4. If you experience high-pitched screaming noise from your baby monitor while positioning:
  - Make sure your baby units and parent unit are more than 1 meter (3 feet) apart, OR
  - Turn down the volume of your parent unit.

## Operating range

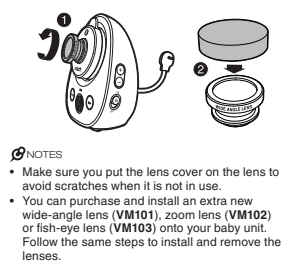
The operating range of the baby monitor is up to 300 meters (1,000 feet) outdoors or 50 meters (160 feet) indoors. The actual operating range may vary depending on the environmental conditions and other interferences such as walls, doors and other obstructions.

## Install the lens (optional)

The wide-angle lens (VM101) provided allows you to view more of your baby's room from the parent unit screen. Install the wide-angle lens onto the baby unit camera as shown below.



## Remove the lens

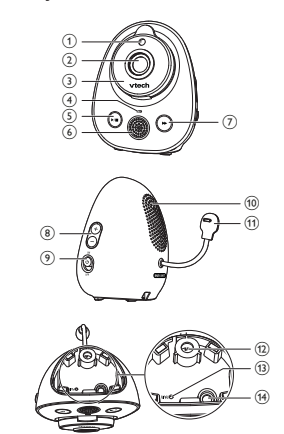


### NOTES

- Make sure you put the lens cover on the lens to avoid scratches when it is not in use.
- You can purchase and install an extra new wide-angle lens (VM101), zoom lens (VM102) or fish-eye lens (VM103) onto your baby unit. Follow the same steps to install and remove the lenses.

## Overview

### Baby unit overview



1	Light sensor
2	Camera
3	Infrared LEDs
4	ON/OFF light <ul style="list-style-type: none"> <li>On when the baby unit is turned on and is paired to the parent unit.</li> <li>Flashes when the baby unit is not being viewed; or when the link to the parent unit is lost.</li> </ul>
5	Play/Stop <ul style="list-style-type: none"> <li>Press to play or stop lullaby on the baby unit.</li> </ul>
6	Microphone
7	Skip <ul style="list-style-type: none"> <li>Press to play the next lullaby.</li> </ul>

8	<b>+/- Volume keys</b> <ul style="list-style-type: none"> <li>Press to adjust the baby unit speaker volume. It determines the lullaby volume and talkback volume transmitted from parent unit.</li> </ul>
9	<b>ON/OFF switch</b> <ul style="list-style-type: none"> <li>Slide to turn on or off the baby unit.</li> </ul>
10	<b>Speaker</b>
11	<b>Temperature sensor</b>
12	<b>Threaded socket</b> <ul style="list-style-type: none"> <li>For wall mount installation use.</li> </ul>
13	<b>PAIR</b> <ul style="list-style-type: none"> <li>Your baby units and parent unit provided are already paired.</li> <li>Press and hold on accessory baby units (VM300, purchased separately) to pair to the parent unit.</li> </ul>
14	<b>Power jack</b>

1	<b>Antenna</b>
2	<b>LED lights</b> <ul style="list-style-type: none"> <li>Indicate the different statuses of the parent unit. For details, refer to <b>Parent unit lights</b>.</li> </ul>
3	<b>Microphone</b>
4	<b>On/off</b> <ul style="list-style-type: none"> <li>Press and hold to power on.</li> <li>Press and hold again to power off.</li> </ul>
5	<b>TALK</b> <ul style="list-style-type: none"> <li>Press and hold to talk to the selected baby unit in <b>SINGLE-CAM</b> or <b>PATROL</b> mode.</li> </ul>
6	<b>Zoom</b> <ul style="list-style-type: none"> <li>Press to zoom in or out while viewing image in <b>SINGLE-CAM</b> or <b>PATROL</b> mode.</li> </ul>
7	<ul style="list-style-type: none"> <li>While in a menu, press to choose an item.</li> <li>While viewing zoomed image, press and hold to move the zoomed image rightward.</li> <li>While in <b>SPLIT-VIEW</b> mode, press to move the selection box rightward.</li> </ul>
8	<b>BACK</b> <ul style="list-style-type: none"> <li>While in a menu, press to return to the main menu or idle screen.</li> <li>While viewing zoomed image, press and hold to move the zoomed image leftward.</li> <li>While in <b>SPLIT-VIEW</b> mode, press to move the selection box leftward.</li> </ul>
9	<b>VIEW / LCD ON/OFF</b> <ul style="list-style-type: none"> <li>Press and hold to turn off the parent unit screen.</li> <li>Press to view the image of the next baby unit in <b>SINGLE-CAM</b> or <b>PATROL</b> mode.</li> </ul> <p><b>PATROL</b></p> <ul style="list-style-type: none"> <li>Press to turn on or off the <b>PATROL</b> mode.</li> </ul> <p><b>SPLIT</b></p> <ul style="list-style-type: none"> <li>Press to turn on or off the <b>SPLIT-VIEW</b> mode.</li> </ul>

10	<b>+VOL</b> <ul style="list-style-type: none"> <li>Press to increase the parent unit speaker volume.</li> </ul>
11	<b>-VOL</b> <ul style="list-style-type: none"> <li>Press to decrease the parent unit speaker volume.</li> </ul>
12	<b>MENU/SELECT</b> <ul style="list-style-type: none"> <li>Press to enter the menu.</li> <li>While in a menu, press to choose an item, or save a setting.</li> </ul>
13	<ul style="list-style-type: none"> <li>While in a menu, press to scroll up.</li> <li>While viewing zoomed image, press and hold to move the zoomed image upward.</li> <li>While in <b>SPLIT-VIEW</b> mode, press to move the selection box upward.</li> </ul>
14	<ul style="list-style-type: none"> <li>While in a menu, press to scroll down.</li> <li>While viewing zoomed image, press and hold to move the zoomed image downward.</li> <li>While in <b>SPLIT-VIEW</b> mode, press to move the selection box downward.</li> </ul>
15	<b>Stand</b>
16	<b>Speaker</b>
17	<b>Power jack</b>

## Parent unit lights

<b>LINK</b>	On when the parent unit is linked to the baby unit. Flashes when the link to the baby unit being viewed in <b>SINGLE-CAM</b> or <b>PATROL</b> mode is lost; or when the link to all baby units being viewed in <b>SPLIT-VIEW</b> mode is lost.
<b>█</b>	On when the parent unit is connected to AC power, or the battery is charging. Flashes when the parent unit battery is low and needs charging. Off when the parent unit is disconnected from AC power.
<b>TALK</b>	On when the parent unit is talking to the baby unit.
<b>▲</b>	On when the parent unit speaker volume is turned off.

## Parent unit display icons

<b>Connection status</b>	<ul style="list-style-type: none"> <li>█ displays when strong signal strength is detected between the baby unit and the parent unit.</li> <li>█ or █ displays when moderate or low signal strength is detected between the baby unit and the parent unit.</li> <li>█ displays when the link between the baby unit and the parent unit is lost.</li> </ul>
<b>Lullaby</b>	<ul style="list-style-type: none"> <li>Displays when the baby unit is playing lullaby.</li> </ul>
<b>Current view status</b>	<ul style="list-style-type: none"> <li>Displays the number of the baby unit that is being viewed when in <b>SINGLE-CAM</b> and <b>PATROL</b> mode.</li> <li>Displays the number of the highlighted baby unit when in <b>SPLIT-VIEW</b> mode.</li> </ul>
<b>Patrol mode</b>	<ul style="list-style-type: none"> <li>Displays when the parent unit is in <b>PATROL</b> mode.</li> </ul>
<b>Split-view mode</b>	<ul style="list-style-type: none"> <li>Displays when the parent unit is in <b>SPLIT-VIEW</b> mode.</li> </ul>
<b>Night vision</b>	<ul style="list-style-type: none"> <li>Displays when the baby unit being viewed has activated the night vision feature.</li> </ul>
<b>Zoom</b>	<ul style="list-style-type: none"> <li>Displays when the baby unit camera has zoomed in.</li> </ul>
<b>Temperature alert tone</b>	<ul style="list-style-type: none"> <li>Displays when the temperature alert tone is set on.</li> </ul>
<b>°F or °C</b>	<b>Real-time temperature</b> <ul style="list-style-type: none"> <li>Displays the real-time temperature detected by the baby unit in Fahrenheit (°F) or Celsius (°C) (e.g. 57 °F or 14 °C).</li> </ul>

<b>Mute alert</b>	<ul style="list-style-type: none"> <li>Displays when the parent unit speaker volume is set to off.</li> <li>Displays when <b>SPLIT-VIEW</b> mode is turned on.</li> </ul>
<b>9-level sound indicator</b>	<ul style="list-style-type: none"> <li>█ (1 to 3 bars) indicates low sound level detected by the baby unit.</li> <li>█ (4 to 6 bars) indicates moderate sound level detected by the baby unit.</li> <li>█ (7 to 9 bars) indicates high sound level detected by the baby unit (e.g. baby crying loudly).</li> </ul>
<b>Speaker volume</b>	<ul style="list-style-type: none"> <li>Displays the parent unit speaker volume level while adjusting.</li> </ul>
<b>Battery status</b>	<ul style="list-style-type: none"> <li>█ animates when the battery is charging.</li> <li>█ displays solid when the battery is fully charged.</li> <li>█ displays when the battery is low and needs charging.</li> </ul>
<b>AC power without battery</b>	<ul style="list-style-type: none"> <li>Displays when the parent unit is connected to AC power without the battery.</li> </ul>

## Parent unit main menu icons

<b>Language</b>	You can select a language (English, French or Spanish) to be used in all screen displays.
<b>Alert Tone</b>	You can set the parent unit to beep when <ul style="list-style-type: none"> <li>the parent unit operates in low battery condition;</li> <li>the link between the parent unit and the baby unit is lost; or</li> <li>the baby unit detects sounds while in <b>SPLIT-VIEW</b> mode.</li> </ul>

<b>Sensitivity</b>	With this feature, you can choose to hear sounds from the baby unit all the time, or to hear sounds that exceed a certain level. You can use the parent unit to adjust the microphone sensitivity of your baby unit. The higher the sensitivity level, the more sensitive the baby unit is in detecting sounds for transmitting to the parent unit.
<b>Temperature</b>	You can turn on the <b>Temperature alert tone</b> so that the parent unit beeps whenever the room temperature detected by the baby unit falls outside of the desired temperature range.
<b>Vibration</b>	You can turn on the vibration alert so that the parent unit vibrates when it receives <b>Low battery tone</b> , <b>No link alert</b> , <b>Sound alert in split-view</b> or <b>Temperature alert tone</b> after turning on the respective alert tones.
<b>Sound-activated Screen</b>	Automatically turns on the parent unit screen when a baby unit detects a sound after the screen is turned off. When no sound is detected, the screen is automatically off to save power.
<b>LCD</b>	You can change the brightness of the parent unit screen, or turn on the <b>Dim Mode</b> to save power.
<b>Rename</b>	You can choose a specific name for the baby unit from a pre-defined name list.
<b>Pair/Unpair</b>	The baby unit and parent unit provided are already paired. You can add or replace baby units (VM300, purchased separately) to your baby monitor system.

## Parent unit display messages

<b>No link to CAM # *</b>	The selected baby unit is out of range or is turned off.
<b>Battery low at Parent Unit</b>	The battery level of the parent unit is very low and needs to be recharged.
<b>Battery empty, Powering off ...</b>	The battery is empty and needs to be recharged.
<b>Sound detected at CAM #</b>	The sound level exceeds the threshold at CAM # in <b>SPLIT-VIEW</b> mode.
<b>Temperature too high at CAM #</b> or <b>Temperature too low at CAM #</b>	The temperature detected by the baby unit is higher/lower than the desired temperature alert range.
<b>Powering on...</b>	The parent unit is turning on.
	The parent unit is searching for baby units.

\* # represents the selected baby unit number.

## Using the baby monitor

### Power on or off the baby unit

- Slide the **ON/OFF** switch on the baby units to **ON** to power on. The **ON/OFF** LED light turns on.
- Slide the **ON/OFF** switch on the baby units to **OFF** to power off. The **ON/OFF** LED light turns off.

### Power on or off the parent unit

- Press and hold **ON** to power on the parent unit. The screen turns on.
- Press and hold **OFF** again to power off the parent unit. The screen turns off.

### Turn on or off the parent unit screen

You can turn on or off the parent unit screen without powering off the parent unit. You can still hear sound from the baby units.

- Press and hold **LCD ON/OFF** on the top of the parent unit to turn off the screen.
- Press any key on the parent unit to turn on the screen again.

### Adjust the speaker volume

**For parent unit:**

- Press **+VOL/-** on the parent unit at any time when viewing images.

### NOTE

- When the parent unit speaker volume is set to zero, **▲** appears on the screen and the **▲** light turns on.

### For baby unit:

- The baby unit speaker volume determines the lullaby volume and talkback volume transmitted from parent unit.
- Press **+/-** on the baby unit to adjust the speaker volume.

## Play lullaby on the baby unit

You can play lullaby on the baby unit to comfort your baby.

- Press **▶/■** on the baby unit to play lullaby. It starts playing lullaby for 10 minutes.
- Press **▶** on the baby unit to switch to the other lullabies.
- Press **▶/■** again to stop the lullaby.

### TIP

- When the lullaby stops, press **▶/■** again to replay.

## Set the language

You can select a language (English, French or Spanish) to be used in all screen displays.

- Press **MENU** when the parent unit is idle.
- Press **▼** or **▲** to choose **Language**, then press **SELECT**.
- Press **▼** or **▲** to choose **English, Français** or **Español**, then press **SELECT** to confirm your selection.

## Turn on or off the dim mode

The dim mode is preset to on to help you save the parent unit power. Whenever the parent unit has been left idle for 10 minutes while the screen is still on, the screen will be dimmed automatically to save power.

- Press **MENU** when the parent unit is idle.
- Press **▼** or **▲** to choose **LCD**, then press **SELECT**.
- Press **▼** or **▲** to choose **Dim Mode**, then press **SELECT**.
- Press **▼** or **▲** to choose **On** or **Off**, then press **SELECT** to confirm your selection.

### NOTE

- While the screen is dimmed, any keypad or alert message will trigger the screen to return to the preset brightness level. After 10 minutes of idle, it will be dimmed again.

## Turn on or off the sound activation

When sound activation is on, as long as no sound is detected within 50 seconds, the parent unit screen will turn off automatically to save power.

- When your baby unit detects a sound, the sound activation triggers the parent unit screen to turn on automatically. When no sound is detected within 50 seconds, the screen will be off again.
- Press **MENU** when the parent unit is idle.
- Press **▼** or **▲** to choose **Sound-activated Screen**, then press **SELECT**.
- Press **▼** or **▲** to choose **On** or **Off**, then press **SELECT** to confirm your selection. The screen returns to main menu.

### NOTES

- Sound activation is available in **SINGLE-CAM** and **PATROL** mode only.
- If the sound sensitivity is set to **Highest**, the parent unit screen may remain on continuously even though sound activation is on.



## Adjust the sound sensitivity of the baby units

You can choose to hear sounds from the baby units all the time, or to hear sounds that exceed a certain level. You can use the parent unit to adjust the microphone sensitivity of your baby units from **Lowest** to **Highest**.

The higher the sensitivity level, the more sensitive the baby unit is in detecting sounds for transmitting to the parent unit. The sound sensitivity level is preset to **Highest**.

### Sound sensitivity table for reference

Sensitivity Level	Description
<b>Highest</b>	The parent unit speaker is constantly on, and you will hear all sounds (including background noises) from your baby's room.
<b>High</b>	The parent unit speaker turns on for soft babbling and louder sounds from your baby. It remains quiet when your baby sleeps soundly.
<b>Medium</b>	The parent unit speaker turns on for loud babbling and louder sounds from your baby. It remains quiet when your baby makes soft sounds.
<b>Low</b>	The parent unit speaker turns on for crying and louder sounds from your baby. It remains quiet when your baby makes soft sounds.
<b>Lowest</b>	The parent unit speaker turns on for loud crying or screaming sounds from your baby. It remains quiet when your baby makes soft sounds.

- Press **MENU** when the parent unit is idle.
- Press **▼** or **▲** to choose **Sensitivity**, then press **SELECT**.
  - If you have more than one baby unit, the system prompts you to choose the desired baby unit or all baby units, press **▼** or **▲** to choose **ALL CAM** or **CAM #**, then press **SELECT**.
- Press **▼** or **▲** to choose the desired sensitivity level, then press **SELECT** to confirm your selection.



- You can adjust the baby unit placement to improve the sound detection.

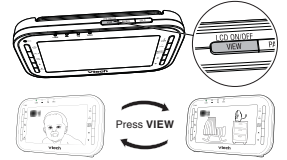
### Monitoring mode

Every time the parent unit is turned on, it displays a baby unit in **SINGLE-CAM** mode. If there are more than one baby units in your system, you can also monitor your baby in **PATROL** or **SPLIT-VIEW** mode.

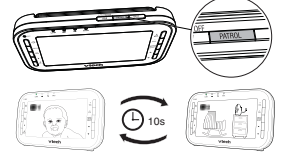
<b>SINGLE-CAM</b>	The screen displays a single baby unit in full screen.
<b>PATROL</b>	This single cam view that transits to a different baby unit every 10 seconds.
<b>SPLIT-VIEW</b>	The screen displays all baby units (up to four) on one screen.

### In SINGLE-CAM or PATROL mode:

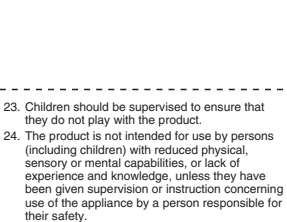
- Press **VIEW** to view the next baby unit.



- Press **PATROL** to switch to **PATROL** mode if you are in **SINGLE-CAM** mode, and vice versa.



- Press **PATROL** to switch to **PATROL** mode if you are in **SINGLE-CAM** mode, and vice versa.



### SAVE THESE INSTRUCTIONS

#### Cautions

- Use and store the product at a temperature between 32°F and 104°F.
- Do not expose the product to extreme cold, heat or direct sunlight. Do not put the product close to a heating source.
- Batteries should not be exposed to excessive heat such as bright sunlight or fire.
- Make sure the baby unit(s) and the adapter cord(s) are always out of reach of the baby, at least 3 feet away from the baby or crib, to avoid a possible strangulation hazard.
- This product should be operated only from the type of power source indicated on the marking label. If you are not sure of the type of power supply in your home, consult your dealer or local power company.
- Do not overload wall outlets or use an extension cord.
- Do not place this product on an unstable table, shelf, stand or other unstable surfaces.
- This product should not be placed in any area where proper ventilation is not provided. Slots and openings in the back or bottom of this product are provided for ventilation. To protect them from overheating, these openings must not be blocked by placing the product on a soft surface such as a bed, sofa or rug. This product should never be placed near or over a radiator or heat register.
- Never push objects of any kind into this product through the slots because they may touch dangerous voltage points or create a short circuit. Never spill liquid of any kind on the product.
- To reduce the risk of electric shock, do not disassemble this product, but take it to an authorized service facility. Opening or removing parts of the product other than specified access doors may expose you to dangerous voltages or other risks. Incorrect reassembly can cause electric shock when the product is subsequently used.
- You should turn the sound reception every time you turn on the units or move one of the components.
- Periodically examine all components for damage.
- Be aware of possible loss of privacy while using public airwaves. Conversations may be picked up by other nursery monitors, cordless phones, scanners, etc.

#### Precautions for users of implanted cardiac pacemakers

Cardiac pacemakers (applies only to digital cordless devices).

Wireless Technology Research, LLC (WTR), an independent research entity, led a multidisciplinary evaluation of the interference between portable wireless devices and implanted cardiac pacemakers. Supported by the U.S. Food and Drug Administration, WTR recommends to physicians that:

#### Pacemaker patients

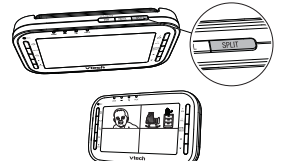
- Should keep wireless devices at least six inches from the pacemaker.
- Should NOT place wireless devices directly over the pacemaker, such as in a breast pocket, when it is turned ON.

WTR's evaluation did not identify any risk to bystanders with pacemakers from other persons using wireless devices.

#### Electromagnetic fields (EMF)

This VTEch product complies with all standards regarding electromagnetic fields (EMF). If handled properly and according to the instructions in this user's manual, the product is safe to be used based on scientific evidence available today.

- Press **SPLIT** to enter the **SPLIT-VIEW** mode.



### In SPLIT-VIEW mode:

- Press **▲**, **▼**, **◀** or **▶** to select a baby unit.
- Press **Ⓞ** or **VIEW** key to view the selected baby unit temporarily in **SINGLE-CAM** mode. It returns to **SPLIT-VIEW** mode after 10 seconds.
- Press **PATROL** to enter **PATROL** mode.
- Press **SPLIT** to return to the mode (**SINGLE-CAM** or **PATROL**) used before entering **SPLIT-VIEW** mode.

#### NOTE

- The parent unit is muted while in **SPLIT-VIEW** mode.

### Zoom

You can zoom in or out while viewing image from baby unit in **SINGLE-CAM** and **PATROL** mode.

- Press **Ⓞ** to zoom in.
- Press **and hold ▲**, **▼**, **◀** or **▶** to move the zoomed image upward, downward, leftward or rightward correspondingly.
- Press **Ⓞ** again to zoom out.

### Talk

You can use the **TALK** function of the parent unit to comfort your baby in **SINGLE-CAM** and **PATROL** mode.

- Press **and hold TALK** on the parent unit. The **TALK** light turns on.
- Speak towards the microphone on the parent unit. Your voice is broadcast to the baby unit.
- Release the **TALK** key to stop the broadcast. The **TALK** light goes off.

## The RBRC® seal

The RBRC® seal on the lithium-ion battery indicates that VTEch Communications, Inc. is voluntarily participating in an industry program to collect and recycle these batteries at the end of their useful lives, when taken out of service within the United States and Canada.

The RBRC® program provides a convenient alternative to placing used lithium-ion batteries into the trash or municipal waste, which may be illegal in your area.

VTEch's participation in RBRC® makes it easy for you to drop off the spent battery at local retailers participating in the RBRC® program or at authorized VTEch product service centers. Please call **1 (800) 8 BATTERY®** for information on Li-Ion battery recycling and disposal bans/restrictions in your area. VTEch's involvement in this program is part of its commitment to protecting our environment and conserving natural resources.

VTEch® and 1 (800) 8 BATTERY® are registered trademarks of the Rechargeable Battery Recycling Corporation.

## FCC and IC regulations

#### FCC Part 15

This equipment has been tested and found to comply with the requirements for a Class B digital device under Part 15 of the Federal Communications Commission (FCC) rules. These requirements are intended to provide reasonable protection against harmful interference in a residential installation. This equipment generates, uses and can radiate radio frequency energy and, if not installed and used in accordance with the instructions, may cause harmful interference to radio communications. However, there is no guarantee that interference will not occur in a particular installation. If this equipment does cause harmful interference to radio or television reception, which can be determined by turning the equipment off and on, the user is encouraged to try to correct the interference by one or more of the following measures:

- Reorient or relocate the receiving antenna.
- Increase the separation between the equipment and receiver.
- Connect the equipment into an outlet on a circuit different from that to which the receiver is connected.
- Consult the dealer or an experienced radio/TV technician for help.

**WARNING:** Changes or modifications to this equipment not expressly approved by the party responsible for compliance could void the user's authority to operate the equipment.

### Set alert tone

#### Low battery tone

You can set the parent unit to beep when the parent unit operates in low battery condition.

- Press **MENU** when the parent unit is idle.
- Press **▼** or **▲** to choose **Alert Tone**, then press **SELECT**.
- Press **SELECT** again to choose **Low Battery Tone**.
- Press **▼** or **▲** to choose **On** or **Off**, then press **SELECT** to confirm your selection.

#### No link alert

You can set the parent unit to beep when the link between the parent unit and the baby unit is lost.

- Press **MENU** when the parent unit is idle.
- Press **▼** or **▲** to choose **Alert Tone**, then press **SELECT**.
- Press **▼** or **▲** to choose **No Link Alert**, then press **SELECT**.
- Press **▼** or **▲** to choose **On** or **Off**, then press **SELECT** to confirm your selection.

#### Sound alert in split-view

You can turn on the sound alert feature so that, while in **SPLIT-VIEW** mode, the parent unit beeps and displays **Sound detected at CAM #** whenever the baby unit detects sounds.

- Press **MENU** when the parent unit is idle.
- Press **▼** or **▲** to choose **Alert Tone**, then press **SELECT** to select.
- Press **▼** or **▲** to choose **Sound alert in split-view**, then press **SELECT**.
- Press **▼** or **▲** to choose **On** or **Off**, then press **SELECT** to confirm your selection.

#### NOTE

- The sound alert feature is only available in **SPLIT-VIEW** mode.

### Monitor the temperature

Your baby unit monitors the temperature of your baby's room with its built-in temperature sensor. If the detected temperature is outside of the preset temperature range, the parent unit will display alert message.

#### Set temperature range

You can set the desired room temperature alert range. The minimum temperature can be set between 52 °F (11 °C) and 69 °F (20 °C). The maximum temperature can be set between 70 °F (21 °C) and 86 °F (30 °C).

- Press **MENU** when the parent unit is idle.
- Press **▼** or **▲** to choose **Temperature**, then press **SELECT**.
- Press **▼** or **▲** to choose **Minimum** or **Maximum**, then press **SELECT**.
- If you have more than one baby unit, the system prompts you to choose the desired baby unit or all baby units, press **▼** or **▲** to choose **ALL CAM** or **CAM #**, then press **SELECT**.

- Press **MENU** when the parent unit is idle.
- Press **▼** or **▲** to choose **Alert Tone**, then press **SELECT**.
- Press **▼** or **▲** to choose **No Link Alert**, then press **SELECT**.
- Press **▼** or **▲** to choose **On** or **Off**, then press **SELECT** to confirm your selection.

- Press **MENU** when the parent unit is idle.
- Press **▼** or **▲** to choose **Temperature**, then press **SELECT**.
- Press **▼** or **▲** to choose **Minimum** or **Maximum**, then press **SELECT**.
  - If you have more than one baby unit, the system prompts you to choose the desired baby unit or all baby units, press **▼** or **▲** to choose **ALL CAM** or **CAM #**, then press **SELECT**.
- Press **▼** or **▲** to choose the desired minimum or maximum temperature, then press **SELECT** to confirm your selection.

#### Temperature alert tone

You can turn on the temperature alert tone so that the parent unit will emit an alert tone if the detected temperature is out of range.

- Press **MENU** when the parent unit is idle.
- Press **▼** or **▲** to choose **Temperature**, then press **SELECT**.
- Press **▼** or **▲** to choose **Alert Tone**, then press **SELECT**.
  - If you have more than one baby unit, the system prompts you to choose the desired baby unit or all baby units, press **▼** or **▲** to choose **ALL CAM** or **CAM #**, then press **SELECT**.
- Press **▼** or **▲** to choose **On** or **Off**, then press **SELECT** to confirm your selection.

- Press **MENU** when the parent unit is idle.
- Press **▼** or **▲** to choose **Temperature**, then press **SELECT**.
- Press **▼** or **▲** to choose **Alert Tone**, then press **SELECT**.
  - If you have more than one baby unit, the system prompts you to choose the desired baby unit or all baby units, press **▼** or **▲** to choose **ALL CAM** or **CAM #**, then press **SELECT**.
- Press **▼** or **▲** to choose **On** or **Off**, then press **SELECT** to confirm your selection.

- Use only the adapters included with this product. Incorrect adapter polarity or voltage can seriously damage the product. Baby unit power adapter. Output: 5V DC 1A Input power adapter. Output: 5V DC 1A.
- The power adapters are intended to be correctly oriented in a vertical or floor mount position. The prongs are not designed to hold the plug in place if it is plugged into a ceiling, under-the-table or cabinet outlet.

- For pluggable equipment, the socket-outlet shall be installed near the equipment and shall be easily accessible.

- Unplug this product from the wall outlet before cleaning. Do not use liquid or aerosol cleaners. Use a damp cloth for cleaning.
- Unplug the power cords before replacing batteries.
- Do not cut off the power adapters to replace them with other plugs, as this causes a hazardous situation.
- Do not allow anything to rest on the power cords. Do not install this product where the cords may be walked on or crimped.

- This product should be operated only from the type of power source indicated on the marking label. If you are not sure of the type of power supply in your home, consult your dealer or local power company.
- Do not overload wall outlets or use an extension cord.
- Do not place this product on an unstable table, shelf, stand or other unstable surfaces.
- This product should not be placed in any area where proper ventilation is not provided. Slots and openings in the back or bottom of this product are provided for ventilation. To protect them from overheating, these openings must not be blocked by placing the product on a soft surface such as a bed, sofa or rug. This product should never be placed near or over a radiator or heat register.
- Never push objects of any kind into this product through the slots because they may touch dangerous voltage points or create a short circuit. Never spill liquid of any kind on the product.
- To reduce the risk of electric shock, do not disassemble this product, but take it to an authorized service facility. Opening or removing parts of the product other than specified access doors may expose you to dangerous voltages or other risks. Incorrect reassembly can cause electric shock when the product is subsequently used.
- You should turn the sound reception every time you turn on the units or move one of the components.
- Periodically examine all components for damage.
- Be aware of possible loss of privacy while using public airwaves. Conversations may be picked up by other nursery monitors, cordless phones, scanners, etc.

- Children should be supervised to ensure that they do not play with the product.
- The product is not intended for use by persons (including children) with reduced physical, sensory or mental capabilities, or lack of experience and knowledge, unless they have been given supervision or instruction concerning use of the appliance by a person responsible for their safety.

### SAVE THESE INSTRUCTIONS

#### Cautions

- Use and store the product at a temperature between 32°F and 104°F.
- Do not expose the product to extreme cold, heat or direct sunlight. Do not put the product close to a heating source.
- Batteries should not be exposed to excessive heat such as bright sunlight or fire.
- Make sure the baby unit(s) and the adapter cord(s) are always out of reach of the baby, at least 3 feet away from the baby or crib, to avoid a possible strangulation hazard.
- This product should be operated only from the type of power source indicated on the marking label. If you are not sure of the type of power supply in your home, consult your dealer or local power company.
- Do not overload wall outlets or use an extension cord.
- Do not place this product on an unstable table, shelf, stand or other unstable surfaces.
- This product should not be placed in any area where proper ventilation is not provided. Slots and openings in the back or bottom of this product are provided for ventilation. To protect them from overheating, these openings must not be blocked by placing the product on a soft surface such as a bed, sofa or rug. This product should never be placed near or over a radiator or heat register.
- Never push objects of any kind into this product through the slots because they may touch dangerous voltage points or create a short circuit. Never spill liquid of any kind on the product.
- To reduce the risk of electric shock, do not disassemble this product, but take it to an authorized service facility. Opening or removing parts of the product other than specified access doors may expose you to dangerous voltages or other risks. Incorrect reassembly can cause electric shock when the product is subsequently used.
- You should turn the sound reception every time you turn on the units or move one of the components.
- Periodically examine all components for damage.
- Be aware of possible loss of privacy while using public airwaves. Conversations may be picked up by other nursery monitors, cordless phones, scanners, etc.

#### Precautions for users of implanted cardiac pacemakers

Cardiac pacemakers (applies only to digital cordless devices).

Wireless Technology Research, LLC (WTR), an independent research entity, led a multidisciplinary evaluation of the interference between portable wireless devices and implanted cardiac pacemakers. Supported by the U.S. Food and Drug Administration, WTR recommends to physicians that:

#### Pacemaker patients

- Should keep wireless devices at least six inches from the pacemaker.
- Should NOT place wireless devices directly over the pacemaker, such as in a breast pocket, when it is turned ON.

WTR's evaluation did not identify any risk to bystanders with pacemakers from other persons using wireless devices.

#### Electromagnetic fields (EMF)

This VTEch product complies with all standards regarding electromagnetic fields (EMF). If handled properly and according to the instructions in this user's manual, the product is safe to be used based on scientific evidence available today.

This device complies with Part 15 of the FCC rules. Operation is subject to the following two conditions: (1) this device may not cause harmful interference, and (2) this device must accept any interference received, including interference that may cause undesired operation.

To ensure safety of users, the FCC has established criteria for the amount of radio frequency energy that can be safely absorbed by a user or bystander during the intended usage of the product. This product has been tested and found to comply with the FCC criteria. The baby unit shall be installed and used such that parts of all persons' body are maintained at a distance of approximately 8 in (20 cm) or more. The transmitter and antenna of the parent unit shall be held at least 1 in (2.5 cm) from your face.

This Class B digital apparatus complies with Canadian requirement: CAN ICES-3 (B)/NMB-3(B)

#### Industry Canada

This device complies with Industry Canada licence-exempt RSS standard(s).

Operation is subject to the following two conditions: (1) this device may not cause harmful interference, and (2) this device must accept any interference, including interference that may cause undesired operation.

The term "IC:" before the certification/registration number only signifies that the Industry Canada technical specifications were met.

This product meets the applicable Industry Canada technical specifications.

#### RF radiation exposure statement

The baby unit complies with FCC RF radiation exposure limits set forth for an uncontrolled environment. The baby unit should be installed and operated with a minimum distance of 8 in (20 cm) between the baby unit and all persons' body. Use of other accessories may not ensure compliance with FCC RF exposure guidelines. This transmitter must be used in accordance with the instructions and used in conjunction with any other antenna or transmitter. This equipment complies also with Industry Canada RSS-102 with respect to Canada's Health Code 6 for Exposure of Humans to RF Fields.

## California Energy Commission battery charging testing mode

This baby monitor meets the California Energy Commission (CEC) regulations for energy consumption. Your baby monitor is set up to comply with the energy-conserving standards right out of the box.

Follow the instructions to install and charge the battery. The CEC battery charging testing mode is activated while charging.

Even if the parent unit is paired to baby units, the CEC battery charging testing mode is activated while it is powered off and charging.

#### Temperature format

You can choose to display the temperature in Fahrenheit (°F) or Celsius (°C).

- Press **MENU** when the parent unit is idle.
- Press **▼** or **▲** to choose **Temperature**, then press **SELECT**.
- Press **▼** or **▲** to choose **Format**, then press **SELECT**.
- Press **▼** or **▲** to choose **Fahrenheit** or **Celsius**, then press **SELECT** to confirm your selection.

#### Turn on or off the vibration

You can turn on the vibration feature so that the parent unit vibrates when it receives any of **Low battery tone**, **No link alert**, **Sound alert in split-view** or **Temperature alert tone** after turning on the respective alert tones.

- Press **MENU** when the parent unit is idle.
- Press **▼** or **▲** to choose **Vibration**, then press **SELECT**.
- Press **▼** or **▲** to choose **On** or **Off**.
- Press **SELECT** to confirm your selection.

#### Rename the baby units

You can rename each baby unit. Once the baby unit is renamed, its new name together with the baby unit number will appear in the sub-menu of below options:

- Sensitivity
  - Temperature
  - Pair/Unpair
- Press **MENU** when the parent unit is idle.
  - Press **▼** or **▲** to choose **Rename**, then press **SELECT**.
  - Press **▼** or **▲** to choose the desired baby unit, then press **SELECT**.
  - Press **▼** or **▲** to choose the desired name for the baby unit, then press **SELECT** to confirm your selection.

## General product care

To keep this product working well and looking good, follow these guidelines:

- Avoid putting it near heating appliances and devices that generate electrical noise (for example, motors or fluorescent lamps).
- DO NOT expose it to direct sunlight or moisture.
- Avoid dropping the product or treating it roughly.
- Clean with a soft cloth.
- DO NOT immerse the parent unit and the baby unit in water and do not clean them under the tap.
- DO NOT use cleaning spray or liquid cleaners.
- Make sure the baby unit and parent unit are dry before you connect them to the mains again.

## Storage

When you are not going to use the baby monitor for some time, remove the rechargeable battery from the parent unit. Store the parent unit, the baby unit and the adapters in a cool and dry place.

## Frequently asked questions

Below are the questions most frequently asked about the baby monitor. If you cannot find the answer to your question, visit our website at [www.vtechphones.com](http://www.vtechphones.com), or contact 1 (800) 595-9511 for customer service.

Why does the baby monitor not respond normally?	Try the following (in the order listed) for common cure: <ol style="list-style-type: none"><li>Disconnect the power to the baby units and the parent unit.</li> <li>Remove the batteries in the parent unit. Then install the batteries again.</li> <li>Wait a few seconds before connecting power back to the baby units and the parent unit.</li> <li>Turn on the baby units and the parent unit.</li> <li>Wait for the parent unit to synchronize with the baby units. Allow up to one minute for this to take place.</li></ol>
---	--

Why don't the power-on light of the parent unit and parent unit go on when I switch on the units?	Perhaps the parent unit is not connected to the mains. Insert the appliance plug into the parent unit and put the adapter in a wall socket. Then press and hold <b>Ⓞ</b> to switch on the parent unit and to establish connection with the baby unit.
---	---

Perhaps the baby unit is not connected to the mains. Connect the baby unit to the mains. Then set the **ON/OFF** switch to **ON** to switch on the baby unit and to establish connection with the parent unit.

- If pairing fails, the screen displays **Pairing failed**. Try the pairing process again.
- Only one baby unit can be paired at a time.

Why doesn't my parent unit charge while connected to AC power?	Make sure the power is not controlled by a wall switch. <p>Make sure the battery is correctly installed in your parent unit.</p> <p>You may have used the battery for a long time. Replace a new battery.</p>
--	---

Why is my screen in black and white?	The screen is in black and white during nighttime or in a dark room. This is normal due to external light sources.
--------------------------------------	--

Why do I get glare or blurry display on my screen when viewing my baby at night?	During nighttime or in a dark room, the surroundings and other interfering factors, like lightings, objects, colors and backgrounds, may affect the image quality on your parent unit screen. Adjust the baby units angle or place free from defects in material and workmanship, pursuant to the following terms and conditions, when installed and used normally and in accordance with the Product operating instructions. This limited warranty extends only to the Consumer for Products purchased and used in the United States of America and Canada.
--	--

Why does the parent unit beep?	The baby units may be out of range. Move the parent unit closer to the baby units (but not less than 3 feet). <p>If the parent unit is powered by the provided battery, it may not have enough charge for the parent unit to perform normally. Charge the battery in the parent unit for up to 3 hours.</p> <p>If your parent unit is in <b>SPLIT-VIEW</b> mode, some of your baby units may detect sounds.</p> <p>The temperature of your baby's room may be too high or too low.</p>
--------------------------------	--