

Go to www.vtechphones.com to register your product for enhanced warranty support and the latest VTech product news.

DM1111
DM1111-2

Enhanced Range
Digital Audio Monitor



vtech
User's manual

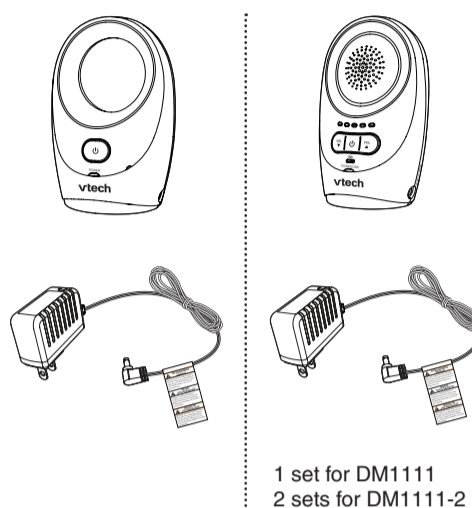
Congratulations

on purchasing your new VTech product. Before using this product, please read **Important safety instructions**.

This manual has all the feature operations and troubleshooting necessary to install and operate your new VTech product. Please review this manual thoroughly to ensure proper installation and operation of this innovative and feature rich VTech product.

For support, shopping, and everything new at VTech, visit our website at www.vtechphones.com.

What's in the box



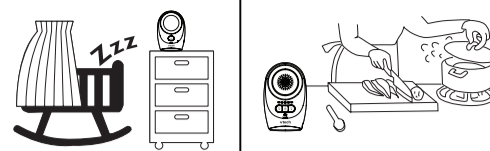
1 set for DM1111
2 sets for DM1111-2

Install batteries for temporary use

You are recommended to use the power adapter to power up the parent unit for normal use. If you want to move around the house with the parent unit, install two AAA alkaline batteries for temporary use.

NOTE

- You need to purchase two AAA alkaline batteries separately.

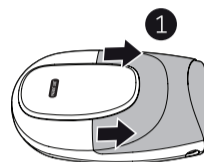


NOTES

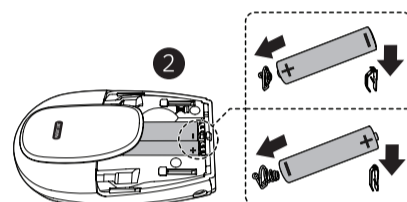
- Use 2 x AAA batteries (not included). Alkaline batteries are recommended. If you use other kind of batteries, the performance of the baby monitor varies.
- The parent unit does not support battery recharging.
- Do not mix old and new batteries. Do not mix alkaline, standard (Carbon-Zinc) or rechargeable (Ni-Cad, Ni-Mh, etc) batteries.
- While you insert the batteries, make sure the polarities are correct.
- When the batteries are installed, the parent unit turns on.
- Replace the batteries when the light flashes on the parent unit, or you hear two beeps every 10 minutes.

Install the batteries as shown below.

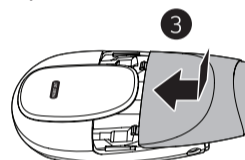
- Push to slide open the battery compartment cover.



- Insert two AAA alkaline batteries into the battery compartment, according to the polarity indications (+) and (-).



- Slide the battery compartment cover until it clicks into place.



Replace the battery

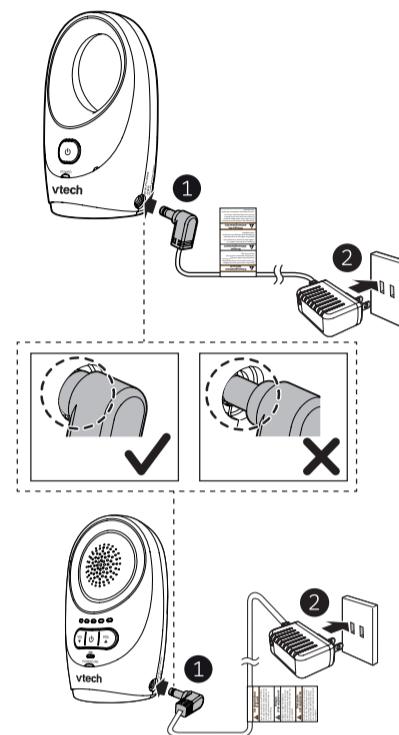
To replace the batteries, slide open the battery compartment cover, and then take out the batteries. Follow the previous steps to install the new batteries.

Connect

NOTES

- Use only the power adapters supplied with this product.
- The power adapters are intended to be correctly oriented in a vertical or floor mount position. The prongs are not designed to hold the plug in place if they are plugged into a ceiling, under-the-table or cabinet outlet.
- Make sure the parent unit, the baby unit and the power adapter cords are out of reach of children.
- Both the baby unit and the parent unit are on once connected to the power supply.

Connect the baby monitor



NOTES

- Make sure the **POWER / LINK** light is on after the power plug is fully inserted into the power jack of the parent unit.
- Make sure the baby unit is on. If the parent unit is not linked to the baby unit, the **POWER / LINK** light on the parent unit will flash. Move the parent unit closer to the baby unit (but not less than 6.5 feet / 2 meters).
- Make sure the **POWER** light is on after the power plug is fully inserted into the power jack of the baby unit.

Before use

NOTE

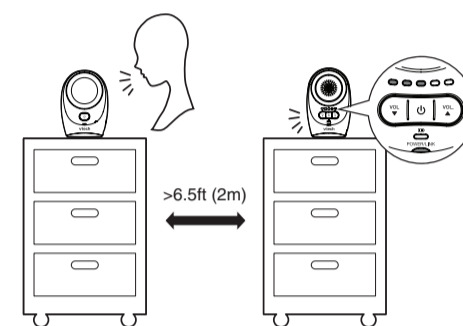
- This baby monitor is intended as an aid. It is not a substitute for proper adult supervision, and should not be used as such.

Test your baby monitor

You may test the baby monitor before initial use, and at regular times thereafter.

CAUTION

- For hearing protection, make sure the parent unit is more than 6.5 feet (2 meters) away from the baby unit. If you hear any high-pitched noise, move the parent unit further until the noise stops. You can also press on the parent unit to lower or mute the noise.



- Make sure your baby unit and parent unit are on.
- Speak towards the microphone of the baby unit. You will hear the sound at the parent unit, and see the visual sound indicators light up.

NOTE

- When the **POWER/LINK** LED light flashes, move the parent unit closer to the baby unit (observe the minimum distance of 6.5 feet / 2 meters). You can also check if the baby monitor is connected to a live power socket and switched on.

TIP

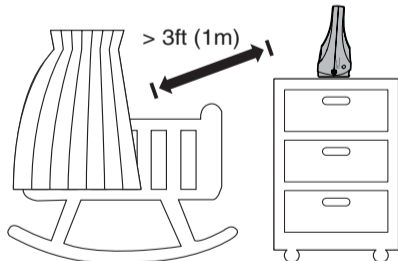
- Increase the speaker volume of the parent unit if you cannot hear the sounds transmitted from the baby unit.

Positioning the baby monitor

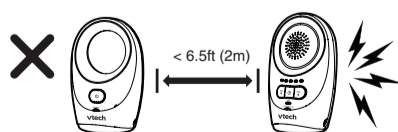
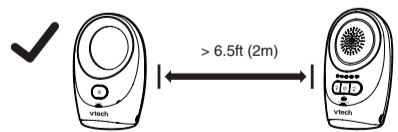
CAUTION

- Keep the baby unit out of the reach of your baby. Never place or mount the baby unit inside the baby's crib or playpen.

- Place the baby unit more than 3 feet (1 meter) away from your baby.



- Place the parent unit more than 6.5 feet (2 meters) away from the baby unit.



CAUTION

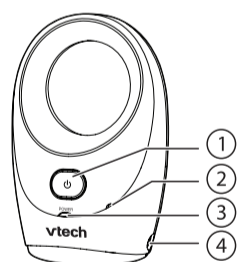
- The default volume of your parent unit is **Level 3**, and the maximum volume is **Level 5**. If you experience high-pitched screeching noise from your baby monitor while positioning:
 - Make sure your baby unit and parent unit are more than 6.5 feet (2 meters) apart, OR
 - Turn down the volume of your parent unit.

Operating range

The operating range of the baby monitor is up to 1,500 feet (450 meters) outdoors or 160 feet (50 meters) indoors. The actual operating range may vary depending on the environmental conditions and other interferences such as walls, doors and other obstructions.

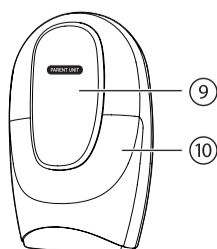
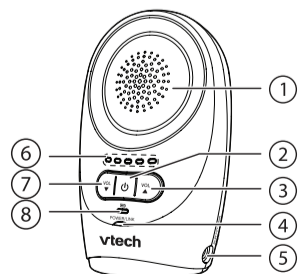
Overview

Baby unit overview



1	(On/off) Press and hold to turn on or off the baby unit.
2	Microphone
3	POWER light
4	Power jack

Parent unit overview



1	Speaker
2	(On/off) Press and hold to turn on or off the parent unit.
3	VOL ▲ (Volume up) • Press to increase the speaker volume.
4	POWER / LINK light
5	Power jack
6	Visual sound indicator • Indicate the sound level detected by the baby unit or show the volume level during speaker volume setting.
7	VOL ▼ (Volume down) • Press to decrease the speaker volume. • Press repeatedly until the volume reaches the minimum to mute the parent unit.
8	(Low battery light)
9	Belt clip
10	Battery compartment cover

Baby unit light

POWER	POWER light • Lights off when the baby unit is off. • Lights on in green when the baby unit is on.
--------------	---

Parent unit lights

POWER / LINK	POWER / LINK light • Lights off when the parent unit is off. • Lights on in green when the parent unit is on and linked to the baby unit. • Flashes in green when there is no link between the baby unit and parent unit, or when the parent unit is out of range from the baby unit.
---------------------	---

	Visual sound indicator The visual sound indicator has two functions. One is to show the sound level detected by the baby unit. The other one is to show the volume level during speaker volume setting.
	Sound level detected by the baby unit • One to three green lights indicate a moderate sound level detected by the baby unit. • Additional red lights indicate a higher sound level detected by the baby unit (e.g. baby crying loudly).
	Speaker volume level • One to three green lights indicate Level 1 to Level 3 of the speaker volume setting. • Additional red lights indicate Level 4 to Level 5 of the speaker volume setting.
	Flashes in red when the battery is low.

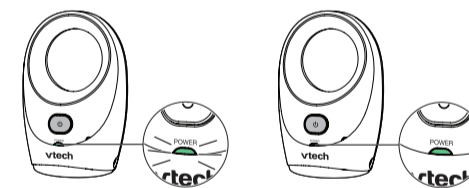
Parent unit alert tones

Low battery tone	• Beeps twice every 10 minutes when the battery is low.
Out of range tone	• Beeps three times every 30 seconds when there is no link between the baby unit and parent unit, or when the parent unit is out of range from the baby unit.

Using the baby monitor

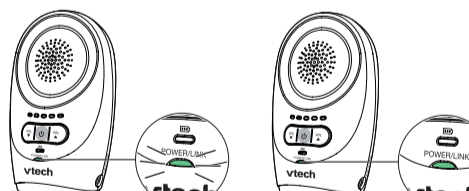
Power on or off the baby unit

- Press and hold until the **POWER** light turns on.
- Press and hold until the **POWER** light turns off.



Power on or off the parent unit

- Press and hold until the **POWER / LINK** light turns on.
- Press and hold until the **POWER / LINK** light turns off.



Adjust speaker volume

The speaker volume is preset to **Level 3** on the parent unit. You can adjust to your preferred sound level.

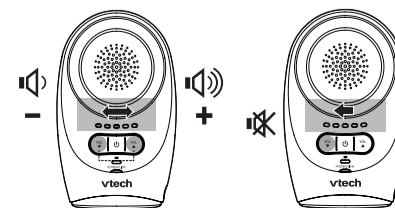
- Press to decrease the volume, and to increase the volume.

NOTE

- If you continue to press or when the volume reaches the minimum or maximum setting, the parent unit will beep twice.

To mute the speaker volume:

- Press repeatedly until the volume reaches the minimum.



NOTES

- When the parent unit is in mute, the visual sound indicator will still indicate the sound detected from the baby unit.
- To unmute, press repeatedly until it reaches your desired volume.

General product care

To keep this product working well and looking good, follow these guidelines:

- Avoid putting it near heating appliances and devices that generate electrical noise (for example, motors or fluorescent lamps).
- DO NOT expose it to direct sunlight or moisture.
- Avoid dropping the product or treating it roughly.
- Clean with a soft cloth.
- DO NOT immerse the parent unit and the baby unit in water and do not clean them under the tap.
- DO NOT use cleaning spray or liquid cleaners.
- Make sure the baby unit and parent unit are dry before you connect them to the mains again.

Storage

When you are not going to use the baby monitor for some time, remove the AAA alkaline batteries from the parent unit. Store the parent unit, the baby unit and the adapters in a cool and dry place.

Operating range

This product operates with the maximum power allowed by the Federal Communications Commission (FCC). Even so, the baby unit and the parent unit can communicate over only a certain distance - which can vary with the locations of the baby unit, the parent unit, the weather, and the layout of your home. When the parent unit is out of range, it will beep three times every 30 seconds and enter searching mode. To improve reception, move closer to the baby unit (but not less than 6.5 feet / 2 meters).

