

Go to www.vtechphones.com to register your product and receive enhanced warranty support and the latest VTech product news.

VM350 VM350-2 Full Color Video Monitor



For more support information



vttech® Quick start guide

Specifications are subject to change without notice. © 2012 VTech, Inc. All rights reserved.

The background noise sound and ring was created by Cambridge Audio, and is used under the Creative Commons license. The Chirps and Meows were created by Cambridge Audio, and is used under the Creative Commons license.

Power requirements	Baby unit power adapter: Output: 5V DC @ 400mA Parent unit battery: 3.8V 2200mAh Li-ion battery
Maximum power	Maximum power allowed by FCC and IC Act: operating range
Frequency control	Crystal controlled PLL synthesizer
Transmit frequency	Baby unit: 2405 - 2475 MHz Parent unit: 2405 - 2475 MHz
Channels	32
LCD	5" Color LCD (WQVGA 800x272 pixel)
Monitor effective range	Maximum power allowed by FCC and IC Act: operating range

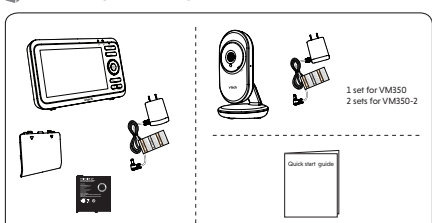
TECHNICAL SPECIFICATIONS

IMPORTANT SAFETY INSTRUCTIONS

- The applied warnings are located at the bottom of the baby unit base.
- When using your equipment, basic safety precautions should always be followed to reduce the risk of fire, electric shock and injury, including the following:
1. Follow all warnings and instructions marked on the product.
 2. Adult use is required.
 3. **CAUTION:** Do not install the baby unit at a height above 2 meters.
 4. This product is not a substitute for adult supervision of the infant. Supervising the infant is the parent's or caregiver's responsibility. This product could cause operation, and therefore you should not assume it will continue working properly for any given period of time. Further, this is not a medical device and should not be used in such. This product is intended to assist you in supervising your baby.
 5. Do not use this product near water. For example, do not use it near a bathtub, wash bowl, kitchen sink, laundry tub or swimming pool, or in a wet basement or shower.
 6. **CAUTION:** Use only the batteries provided. There may be a risk of explosion if a wrong type of battery is used for the parent unit. The batteries cannot be subjected to high or low extreme temperatures and low air pressure at high altitude during use, storage or transportation. Dispose of batteries into fire or a hot oven, or mechanically crushing or cutting or the batteries can result in an explosion. Leaving the batteries in an extremely high temperature surrounding environment can result in an explosion or the leakage of flammable liquid of gas. Batteries subjected to external low air pressure may result in an explosion or the leakage of flammable liquid or gas. Dispose of used battery according to the information in the RBC seal.
 7. Use only the adapters included with this product. Incorrect adapter polarity or voltage can seriously damage the product.
 8. Use only adapters and batteries listed below.
 9. **Warning:** Strangulation Hazard—Children have STRANGLED in cords. Keep this cord out of the reach of children (more than 3 ft (0.9 m) away). Do not remove this tag.
 10. Never place the baby unit inside the baby's crib or playpen. Never cover the baby unit or parent unit with anything such as a towel or a blanket.
 11. Other electronic products may cause interference with your baby monitor. Try installing your baby monitor as far away from these electronic devices as possible: wireless routers, radios, cellular telephones, intercoms, room monitors, television, personal computers, kitchen appliances and cordless telephones.

- Precautions for users of implanted cardiac pacemakers**
- Cardiac pacemakers (implies only to digital cordless devices) Wireless Technology Research, LLC (WTR), an independent research entity, and a multidisciplinary evaluation of the interference between portable wireless devices and implanted cardiac pacemakers. Supported by the U.S. Food and Drug Administration. WTR recommends to physicians that:
- Should keep wireless devices at least six inches from the pacemaker.
 - Should NOT place wireless devices directly over the pacemaker (such as in a breast pocket) when it is turned ON. WTR's evaluation did not identify any risk to bystanders with pacemakers from other persons using wireless devices.
- Electromagnetic fields (EMF)**
- This VTR product complies with all standards regarding electromagnetic fields (EMF). If handled properly and according to the instructions in this user manual, this product is safe to be used based on scientific evidence available today.
- Do not place this product on an unstable table, shelf, stand or other unstable surface.**
- This product should not be placed in any area where proper ventilation is not provided. Sockets and openings in the back or bottom of this product are provided for ventilation. To protect them from overheating, these openings must not be blocked.**

WHAT'S IN THE BOX

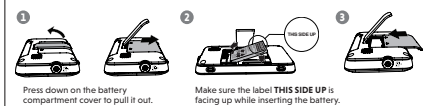


1 CONNECT THE BABY MONITOR

Install the battery

The parent unit runs on rechargeable battery or AC power. To continuously monitor your baby, make sure you use both battery and AC power at the same time.

- NOTES**
- Use only the battery supplied with this product.
 - If the parent unit will not be used for a long time, disconnect and remove the battery to prevent possible leakage.

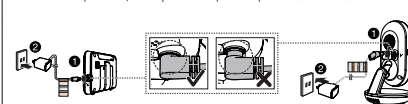


Replace the battery

To replace the battery, press down on the battery compartment cover and pull it out, then follow the steps above to install the battery.

Connect the baby monitor

- NOTES**
- Use only the power adapters supplied with this product.
 - Make sure the baby monitor is not connected to the switch controlled electric outlet.
 - Connect the power adapters in a vertical or floor mount position only. The adapters' prongs are not designed to hold the weight of baby monitor, so do not connect them to any ceiling, under-the-table, or cabinet outlets. Otherwise, the adapters may not properly connect to the outlets.
 - Make sure the parent unit, the baby unit and the power adapter cords are out of reach of children.

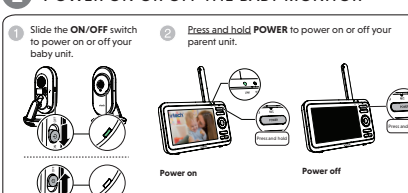


Charge the parent unit battery

When you have connected and turned on the parent unit, the battery will be charged automatically.

- NOTES**
- Before using the baby monitor for the first time, charge the parent unit battery for 12 hours. When the parent unit battery is fully charged, the battery icon becomes solid.
 - It takes longer to charge the battery when the parent unit is turned on. To shorten the charging time, turn the parent unit off while charging.
 - The standby time varies depending on the sensitivity level you set, your actual use and the age of the battery.

2 POWER ON OR OFF THE BABY MONITOR

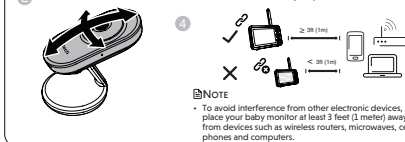


3 POSITIONING THE BABY MONITOR

- CAUTION**
- Keep the baby unit out of the reach of your baby. Never place or mount the baby unit inside the baby's crib or playpen.



- CAUTION**
- The default volume of your parent unit is level 4, and the maximum volume is level 7. If you experience high-pitched screaming noise from your baby monitor while positioning:
 - Make sure your baby unit and parent unit are more than 3 feet (1 meter) apart.
 - Lower the volume of your parent unit.



4 STATUS CHECK

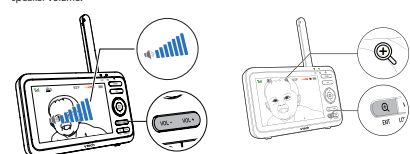
Once you power on both your baby unit and parent unit, your parent unit displays image from the baby unit, and the **LINK** LED light turns on.



BASIC OPERATION - PARENT UNIT

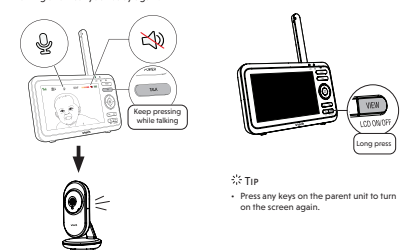
Adjust speaker volume

Press **VOL+ / VOL-** to adjust your parent unit speaker volume.



Talk to your baby unit

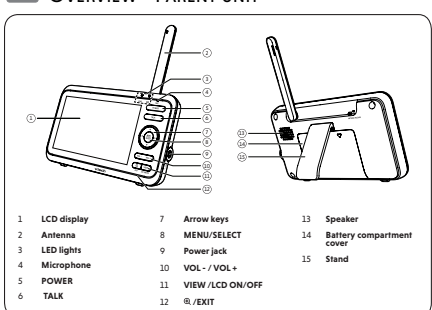
Press and hold **TALK** and speak to your parent unit. Your voice is transmitted to the baby unit. Release **TALK** when finish talking and hear your baby again.



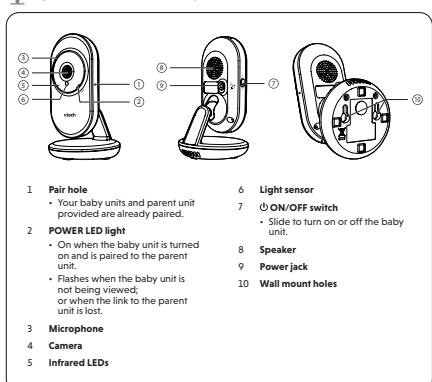
TIP

- Press any keys on the parent unit to turn on the screen again.

OVERVIEW - PARENT UNIT



OVERVIEW - BABY UNIT



NEED HELP?

For operations and guides to help you using your video monitor, and for latest information and supports, go and check the online help topics and online FAQs.

Use your smartphone or mobile device to access our online help.

- Go to <http://help.vtechphones.com/vm350> or <http://help.vtechphones.com/vm350-2> OR
- Scan the QR code on the right. Launch the camera app or QR code scanner app on your smartphone or tablet. Hold the device's camera up to the QR code and frame it. Tap the notification to trigger the redirection of the online help.
- If the QR code is not clearly displayed, adjust your camera's focus by moving your device closer or further away until it is clear.

You can also call our Customer Support at 1 (800) 595-9511 (in US) or 1 (800) 267-7371 (in Canada) for help.

PARENT UNIT ICONS

Main menu	Sub-menu	Main menu	Sub-menu
Brightness	Adjust the parent unit's LCD brightness.	Alert tones	Set the parent unit to beep when the battery is low. Set the parent unit to beep when the link between the parent unit and the baby unit is lost. Set the confirmation tone on or off when selecting an option in the menus.
Camera settings	Baby unit speaker volume Adjust the baby unit's speaker volume.	Temperature	ON/OFF Turn on/off temperature alert tone. Set the parent unit to beeps whenever the room temperature detected by the baby unit falls outside of the set temperature range. Set the minimum temperature. Set the maximum temperature. Set temperature display in Fahrenheit (°F) or Celsius (°C).
Monitoring mode (For VM350-2 only)	Single mode Split mode Patrol mode	VOX (Voice Activated Alert) Sensitivity	Turn on/off sound activation Set sound activation on or off. When it is on, and the baby unit detects no sound, the parent unit screen stays off to save power. Once a sound is detected, the parent unit screen and speaker turns on automatically, and you can see and hear your baby. The parent unit will then turn off again after 50 seconds of no sound detection.
Lullaby	Play/Stop lullaby Select one of the soothing sounds, or white noise. Select one of the five melodies. Play all melodies.		
	60min 45min 30min 15min Set timer to stop playing the selected melody or soothing sound.		

