



at&t

User's manual

TL71108/TL71208/TL71308

5.8 GHz cordless

**telephone with caller ID/
call waiting**



Congratulations

on your purchase
of this AT&T product.

Before using this AT&T product, please
read the **Important safety information**
on pages 58-60 of this manual.

Please thoroughly read this user's
manual for all the feature operations
and troubleshooting information necessary
to install and operate your new
AT&T product. You can also visit our
website at **www.telephones.att.com** or call
1 (800) 222-3111.

In Canada, dial **1 (866) 288-4268.**

Model #: TL71108 (single handset)/TL71208 (bundle handset)/
TL71308 (triple handset)

Type: 5.8 GHz cordless telephone

Serial #: _____

Purchase date: _____

Place of purchase: _____

Both the model and serial number of your AT&T product can be found on the
bottom of the telephone base.

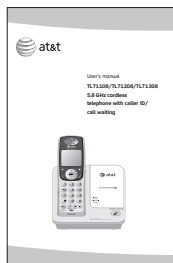
Save your sales receipt and original packaging in case it is necessary to return
your telephone for warranty service.



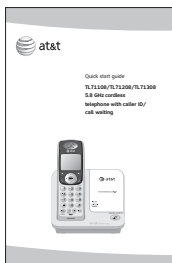
The ENERGY STAR[®] program (www.energystar.gov) recognizes and encourages the use of products that save energy and help protect our environment. We are proud to mark this product with the ENERGY STAR[®] label indicating it meets the latest energy efficiency guidelines.

Parts checklist

Your telephone contains the following items. Save your sales receipt and original packaging in the event warranty service is necessary.



User's manual



Quick start guide



Cordless handset
(1 for TL71108)
(2 for TL71208)
(3 for TL71308)



Telephone base with
mounting bracket
installed



Charger for cordless handset
(1 for TL71208)
(2 for TL71308)



Battery for cordless handset
(1 for TL71108)
(2 for TL71208)
(3 for TL71308)



Battery compartment cover
(1 for TL71108)
(2 for TL71208)
(3 for TL71308)



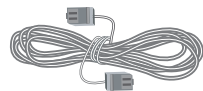
Power adapter for
telephone base



Power adapter for
handset charger
(1 for TL71208)
(2 for TL71308)



Belt clip for cordless handset
(1 for TL71108)
(2 for TL71208)
(3 for TL71308)



Telephone line cord

TL71108/TL71208/TL71308

5.8 GHz cordless telephone with caller ID/ call waiting



Table of contents

Getting started

Quick reference guide	2
Installation setup	4
Telephone base installation.....	5
Charger installation	6
Battery installation & charging ...	7
Belt clip & optional headset.....	9
Installation options.....	10

Telephone operation

Handset operation.....	12
Options while on calls.....	15
Intercom	18
Intercom call transfer	20
Handset settings	22

Directory

Directory	28
New directory entries	29
Directory review	31
Directory search	32
To dial, delete or edit entries.....	33

Caller ID operation

Caller ID operation	35
To review the call log.....	38

Appendix

Screen icons and alert tones	40
Indicator lights	41
Handset display screen messages.....	42
Adding and registering handsets.....	45
Replacing a handset.....	47
Troubleshooting.....	49
Maintenance	57
Important safety instructions....	58
FCC Part 68 and ACTA	61
FCC Part 15.....	63
Limited warranty	64
Technical specifications.....	67
Index.....	68

Quick reference guide

Handset

CHARGE

On when the handset is charging in the telephone base or charger.

CID

Press to display caller ID information (page 38).

PHONE/FLASH

Press to make or answer a call. During a call, press to receive an incoming call if call waiting is activated (page 15).

MUTE/REMOVE

While on a call, press to mute microphone (page 16). While reviewing the call log, press to delete an individual entry, or press and hold to clear the caller ID log (page 39). While predialing, press to delete digits (page 12).

SPEAKER

Press to activate handset speakerphone. Press again to resume normal handset use (page 10).



MENU/SELECT

Press to enter the menu. While in the menu, press to select an item or save an entry or setting. Press or to scroll up or down while in menus. While entering names or numbers, press or to move the cursor to the left or right.

DIR

Press to display directory entries (page 31).

OFF/CLEAR

During a call, press to hang up. While using menus, press to cancel an operation, back up to the previous menu, or exit the menu display.

REDIAL/PAUSE

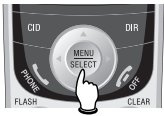
Press to view redial memory (page 13). While entering numbers, press and hold to insert a dialing pause (page 29).

INT

Press to initiate an intercom conversation or transfer a call (pages 18-21).

Quick reference guide

> Shows a highlighted item



Feature menu

DIRECTORY	Page 28
CALL LOG	Page 35
RINGER VOLUME ...	Page 22
RINGER TONE	Page 23
KEY TONE	Page 24
LANGUAGE	Page 24
CLR VOICE MAIL....	Page 26
DIAL TYPE.....	Page 27

Using menus

Press or to scroll through menu items.

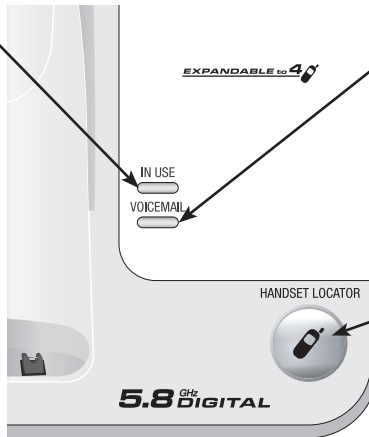
Press **MENU/SELECT** to select or modify a highlighted item.

Press **OFF/CLEAR** to cancel an operation, back up to the previous menu, or exit the menu display.

Telephone base

IN USE

- On when handset is in use, or when you are registering a handset.
- Flashes when another telephone is in use on the same line, or you are deregistering a handset from the telephone base.
- Flashes quickly when there is an incoming call.



VOICEMAIL

Flashes when you have new voice mail. This service is provided by your local telephone company, (different from the answering system on the telephone base).

HANDSET LOCATOR

Press to initiate beeping to locate misplaced handsets (page 14).

Installation setup

You must install and charge the battery before using the telephone.



See pages 7-8 for easy instructions.

Your product may be shipped with a protective sticker covering the handset or telephone base display - remove it before use.

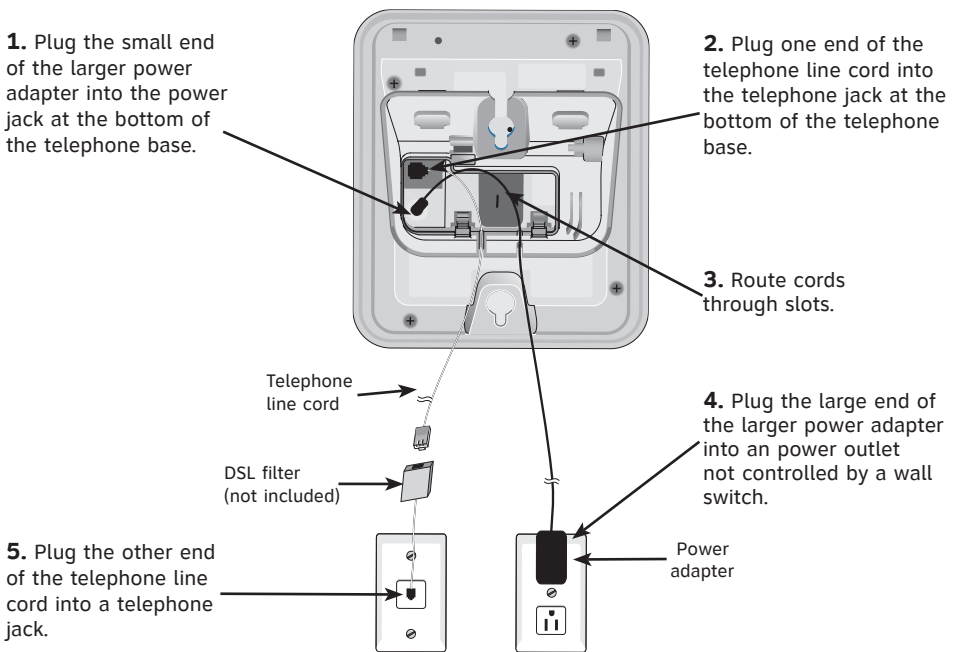
For customer service or product information, visit our website at **www.telephones.att.com** or call **1 (800) 222-3111**. In Canada, dial **1 (866) 288-4268**.

Avoid placing the telephone base too close to:

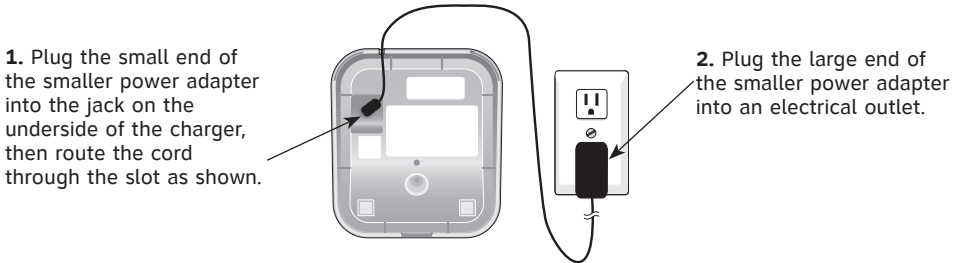
- Communication devices such as: television sets, VCRs, or other cordless telephones.
- Excessive heat sources.
- Noise sources such as a window with traffic outside, motors, microwave ovens, refrigerators, or fluorescent lighting.
- Excessive dust sources such as a workshop or garage.
- Excessive moisture.
- Extremely low temperature.
- Mechanical vibration or shock such as on top of the washing machine or work bench.

Telephone base installation

Install the telephone base as shown below. Make sure that the electrical outlet is not controlled by a wall switch. Also, if you receive high speed internet through your telephone line (commonly referred to as DSL), install a DSL filter to the telephone line between the telephone base and the telephone wall jack. Contact your DSL service provider for more information about DSL filters.



Charger installation



IMPORTANT INFORMATION

1. Use only the power adapter supplied with this product. To order a replacement power adapter, visit our website at **www.telephones.att.com**, or call **1 (800) 222-3111**. In Canada dial **1 (866) 288-4268**.
2. The power adapter is intended to be correctly oriented in a vertical or floor mount position.

Battery installation & charging

Install the battery as shown below. After installing the battery, you can make and receive short calls, but replace the handset in the telephone base or additional charger when not in use. For optimal performance, charge the handset battery for at least 16 hours before use. When fully charged, the handset battery provides approximately five hours of talk time and three days of standby time.



Step 1

Plug the battery securely into the plug inside the handset battery compartment, matching the color-coded label.



Step 2

Insert the supplied battery as indicated. Insert the top edge (contacts and tab) in first, then push downwards on the lower portion of the battery.



Step 3

Align the cover flat against the battery compartment, then slide it upwards until it clicks into place

Battery installation & charging

Step 4

Charge the handset, by placing the handset face up in the telephone base or in the additional charger. The **CHARGE** light will be on when charging.



IMPORTANT INFORMATION

1. Use only the battery supplied with this product. To order a replacement or spare battery (AT&T model 27910, part number 89-0099-00-00) or equivalent, visit our website at **www.telephones.att.com**, or call **1 (800) 222-3111**. In Canada dial **1 (866) 288-4268**.
2. See the **Troubleshooting** section on page 48 for charging issues.

Belt clip & optional headset



Installation

Snap belt clip into notches on both sides of handset.

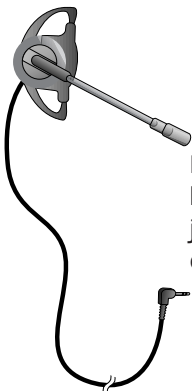


Removal

Pull and unlock one flap from the notch first before detaching the whole belt clip from handset.

For handsfree headset conversations, use any industry standard 2.5 mm headset (purchased separately). For best results, use an AT&T 2.5 mm headset. To purchase a headset, visit our website at

www.telephones.att.com or call **1 (800) 222-3111**. In Canada, dial **1 (866) 288-4268**.



Plug a 2.5 mm headset into the jack on the side of the handset.




Lift the rubber flap here.



Side of handset.



Installation options

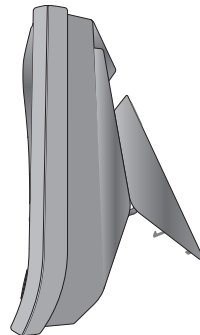
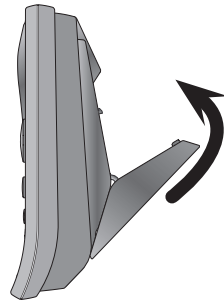
 **NOTE:** The mounting bracket must be used for both tabletop use and wall mounting positions

The telephone base comes with the mounting bracket already installed for desktop use. If wall mounting is desired, a telephone outlet wall mounting plate with mounting studs is required. This mounting plate with studs may be available for purchase from any hardware or consumer electronics retailers and may require professional installation.

Desktop to wall mount installation

To install the telephone base in the wall mount position, make sure that you first unplug all cords connected to the telephone base before you begin.

1. Press the bracket upwards until the bracket clicks into place and is secure.
2. Plug the telephone line cord and power adapter plug into the telephone base and place the cords in the bracket grooves.
3. Plug the power adapter and telephone line cord into the wall outlets, then align the mounting studs on the telephone outlet plate with the mounting holes on the bracket.
4. Place the telephone base mounting holes just above the mounting studs, then slide the telephone base down until it is secure.

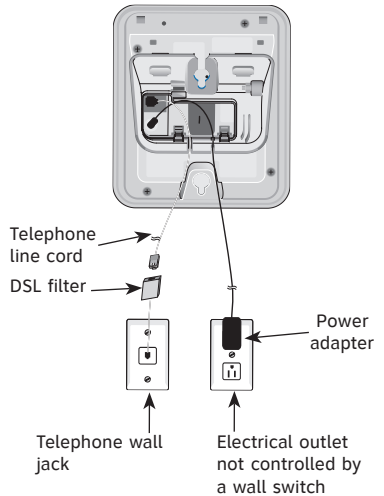
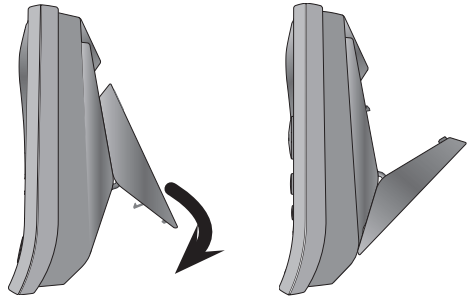


Installation options

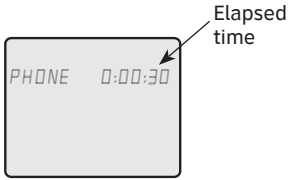
Wall mount to desktop installation

To change the telephone base from the wall mount position to desktop position, make sure that you first unplug the power adapter and telephone line cord from the wall outlets before you begin.

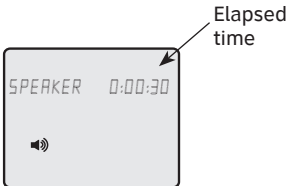
1. Slide the telephone base upwards, then pull the telephone base away from the wall off of the mounting studs.
2. Remove the telephone line cord and power adapter plug from the telephone base.
3. Press the bracket downwards until the bracket clicks into place and is secure.
4. Plug the telephone line cord into the telephone base and telephone wall jack, then plug the power adapter plug into the telephone base and to an electrical wall outlet not controlled by a wall switch (see page 5).



Telephone operation



NOTE: Pressing **PHONE/FLASH** to access services from your local telephone service provider will not affect the elapsed time.



Handset operation

Making a call

To make a call:

- Press **PHONE/FLASH** or **SPEAKER**, then enter the telephone number.

To end a call:

- Press **OFF/CLEAR** or return the handset in the telephone base or charger.

On-hook dialing

- Enter the telephone number, then press **PHONE/FLASH** or **SPEAKER**. Press **MUTE/REMOVE** or **OFF/CLEAR** at any time to make corrections as you are entering numbers.

The screen displays the elapsed time as you talk (in hours, minutes and seconds).

Handset speakerphone

During a call you can press **SPEAKER** to alternate between hands-free speakerphone and normal handset use. Press **OFF/CLEAR** to hang up.



NOTE: If a headset is plugged into the handset, you will not be able to use the handset speakerphone.