

## Telephone base & charger installation

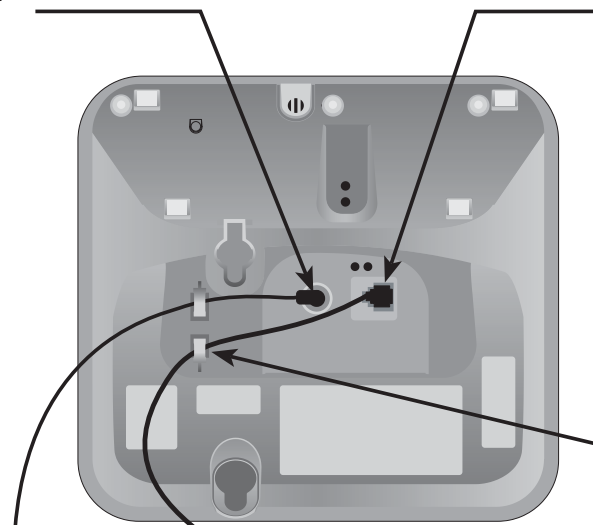
If you subscribe to high-speed Internet service (Digital Subscriber Line - DSL) through your telephone lines, you must install a DSL filter between the telephone base and the telephone wall jack. The filter will prevent noise and caller ID problems caused by DSL interference. Please contact your DSL service provider for more information about DSL filters.

Install the telephone base and charger as shown below.

### Telephone base installation

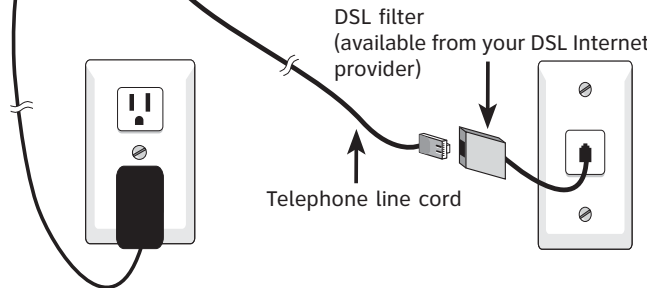
1. Plug the small end of the power adapter into the power jack on the underside of the telephone base.

2. Plug one end of the telephone line cord into the telephone jack on the underside of the telephone base.



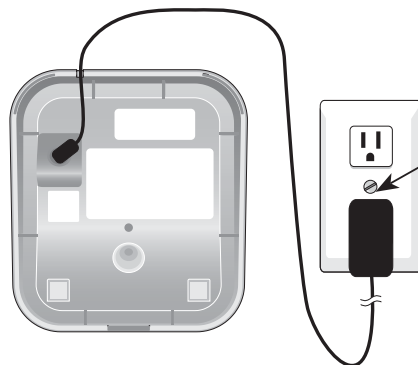
3. Route cords through slots.

5. Plug the large end of the power adapter into an electrical outlet not connected to a wall switch.



4. Plug the other end of the telephone line cord into a telephone jack.

### Charger installation



Plug the power adapter into an electrical outlet not connected to a wall switch.



#### NOTES:

1. Use only the supplied rechargeable battery, replacement battery (part number 89-1332-00-00) or equivalent. To order a replacement battery, visit our website at **[www.telephones.att.com](http://www.telephones.att.com)** or call **1 (800) 222-3111**. In Canada, dial **1 (866) 288-4268**.
2. This power adapter is intended to be correctly oriented in a vertical or floor mount position. The prongs are not designed to hold the plug in place if it is plugged into a ceiling, under-the-table or cabinet outlet.

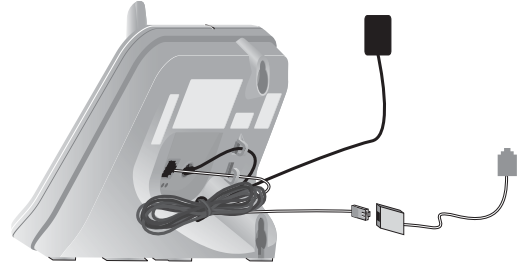
## Installation options

The telephone base is designed for both desktop installation and wall mount installation. If wall mounting is desired, a telephone outlet wall mounting plate with mounting studs is required. This mounting plate is available for purchase at many hardware or consumer electronics retailers and may require professional installation.

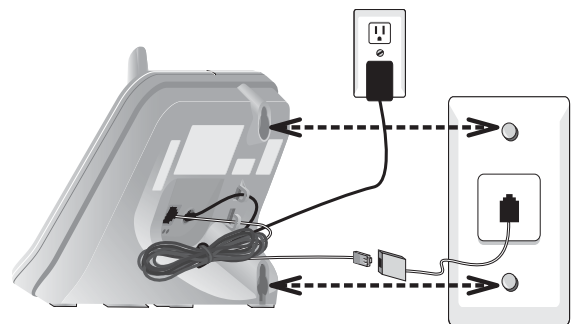
### **Desktop to wall mount installation**

---

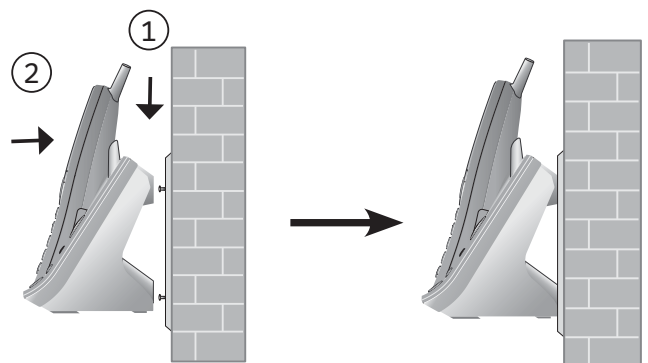
1. Plug the telephone line cord and power adapter into the telephone base. Bundle the telephone line cord and route cords through the slots, then secure with a twist tie.



2. Plug the power adapter and telephone line cord into the wall outlets, then align the mounting studs on the telephone outlet plate with the mounting holes on the telephone base.



3. Place the telephone base mounting holes just above the mounting studs, then slide the telephone base down until it is secure.



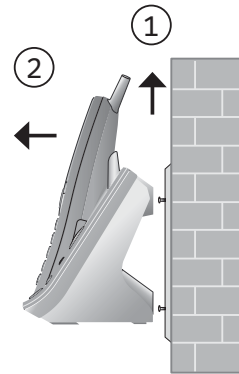
## Installation options

### Wall mount to desktop installation

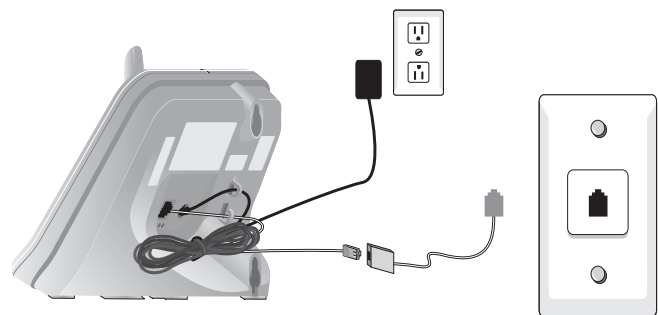
---

To change the telephone base from the wall mount position to desktop position, make sure that you first unplug the power adapter and telephone line cord from the wall outlets before you begin.

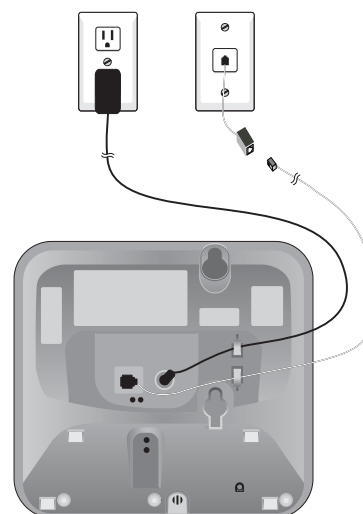
1. Slide the telephone base upwards, then pull the telephone base away from the wall off of the mounting studs.



2. Unplug the power adapter and the telephone line cord from the electrical outlet and the telephone jack.

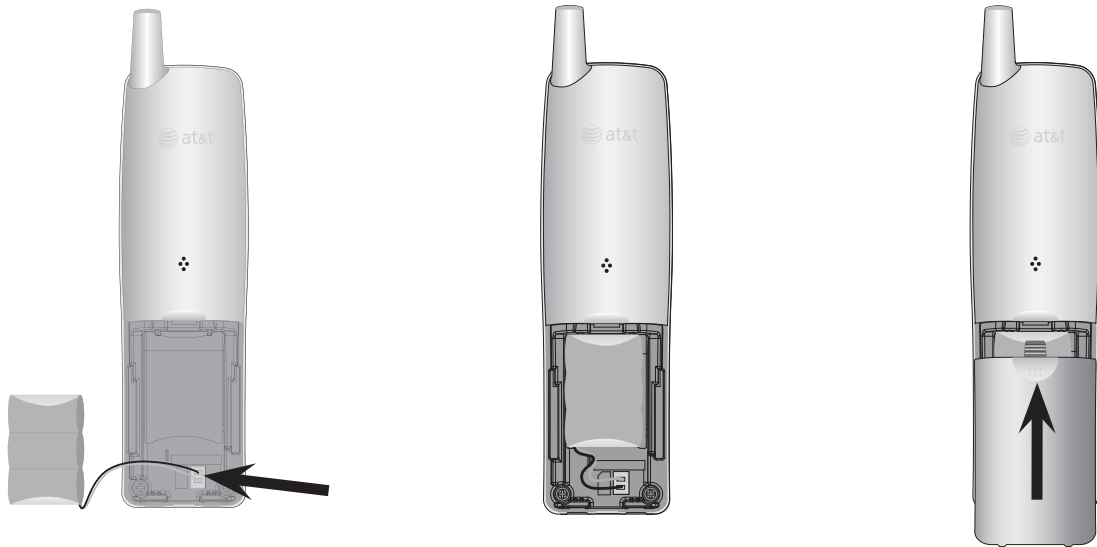


3. Plug the telephone line cord into the telephone base and telephone wall jack, then plug the power adapter plug into the telephone base and a power outlet not connected to a wall switch.



## Battery installation & charging

Install the battery as shown below. After installing the battery, you can make and receive short calls, but replace the handset in the telephone base or charger when not in use. For optimal performance, charge the handset battery for at least 16 hours before use. When fully charged, the handset battery provides approximately five hours of talk time or six days of standby time. If the handset has not been used for a long time or if the battery inside is completely depleted, put it on the telephone base or charger for recharging.



### Step 1

Insert the battery plug as indicated, making sure that it matches the color-coded label inside the battery compartment.

### Step 2

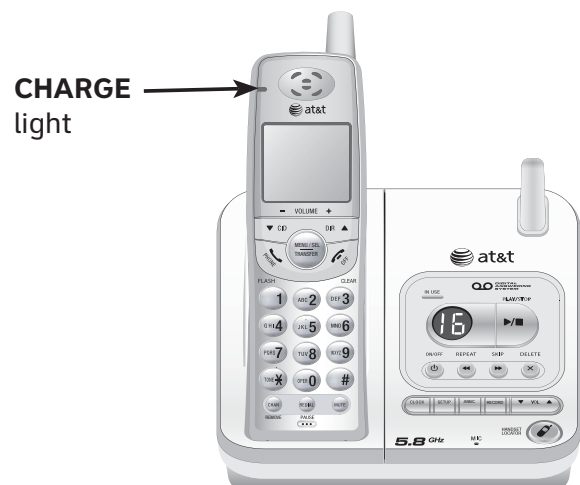
Place the battery and wires inside the compartment.

### Step 3

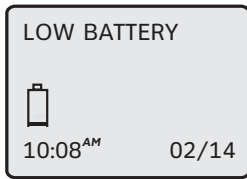
Slide the battery compartment cover up until it clicks.

### Step 4

Charge the handset, by placing the handset face up in the telephone base. The **CHARGE** light on the handset should be on as soon as the handset is properly placed on the telephone base.



## Battery installation & charging



### Low battery indicator

Return the handset to the telephone base or charger to recharge when this symbol flashes and the handset beeps or when the handset screen displays **LOW BATTERY**.



To replace the battery, press the tab and slide the battery compartment cover downwards. Lift out the old battery and disconnect it from the handset. Follow the instructions on the previous page to install and charge the new battery.

### IMPORTANT INFORMATION

Use only the supplied rechargeable battery, replacement battery (part number 89-1332-00-00) or equivalent. To order a replacement battery, visit our website at

**[www.telephones.att.com](http://www.telephones.att.com)** or call **1 (800) 222-3111**. In Canada, dial **1 (866) 288-4268**.

## Settings

Each cordless handset operates independently from the other handsets. The ringer sound, ringer volume, date and time, dial mode, home area code and language must be programmed separately for each cordless handset.

To customize how the handset works:

1. Press **MENU/SEL** in the idle mode to enter the handset main menu.
2. Use **▼CID** or **DIR ▲** to scroll to the desired feature.
3. Press **MENU/SEL** to select the feature.

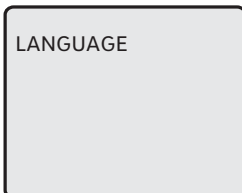
To stop at any time, press **OFF/CLEAR**.

### Language

---

To change the language to Espanol, or Francais:

1. Press **MENU/SEL** in the idle mode to enter the handset main menu.
2. Press **▼CID** or **DIR ▲** until the screen displays **LANGUAGE**.
3. Press **MENU/SEL**. The current setting is flashing.
4. Press **▼CID** or **DIR ▲** to choose **ENGLISH**, **FRANCAIS**, or **ESPANOL**.
5. Press **MENU/SEL** to save your selection and return to the main menu.



### Dial mode

---

The dial mode defaults to tone. If you do not have touch tone service, you will need to change the setting to pulse:

1. Press **MENU/SEL** in the idle mode to enter the handset main menu.
2. Press **▼CID** or **DIR ▲** until the screen displays **DIAL MODE:** and the current setting.
3. Press **MENU/SEL**. The current setting is flashing.
4. Press **▼CID** or **DIR ▲** to display **TONE** or **PULSE**.
5. Press **MENU/SEL** to save your selection and return to the main menu.

