

Quick reference guide

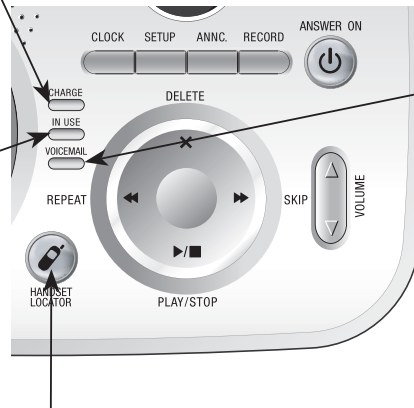
Telephone base

CHARGE

On when the handset is charging in the telephone base.

IN USE

- On when one of the handsets is in use or when the answering system is answering an incoming call.
- Flashes when another telephone is on the same line.
- Flashes quickly when there is an incoming call.



VOICEMAIL

Flashes when you have new voice mail. This service is provided by your local telephone company, (different from the answering system on the telephone base).

HANDSET LOCATOR

Press to initiate beeping to locate misplaced handsets (page 10).

SETUP

Press to hear setup options (page 35).

MESSAGE COUNTER

Displays number of messages (or during playback, message number currently playing) (page 36).

ANNC

Press to review or record announcement; press again to quit (page 34).

CLOCK

Press to review or set clock (page 33).

RECORD

Press to record a memo (page 37) or after pressing **ANNC** to record an outgoing announcement (page 34).

X/DELETE

Press to delete message currently playing; press and you will hear a voice prompt to direct you to press the button again to delete all old messages (page 36).

ANSWER ON

Press to turn answering system on or off (page 39).

◀/REPEAT

Press to repeat message; press **twice** to play previous message (page 36).

VOLUME

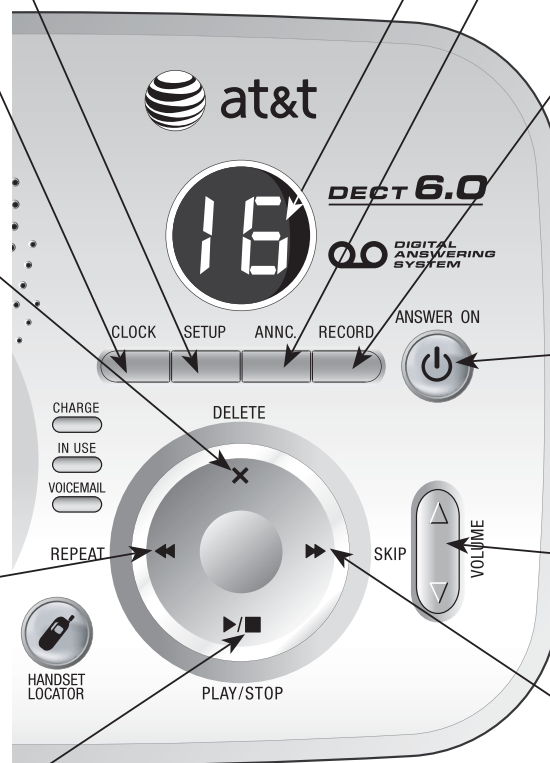
Press to adjust playback volume (page 36).

▶/■ PLAY/STOP

Press to start or stop message playback (page 36).

▶/SKIP

Press to skip message (page 36).



Installation

You must install and charge the battery before using the telephone.



See page 6
for easy instructions.

Your product may be shipped with a protective sticker covering the handset or base display, remove it before use.

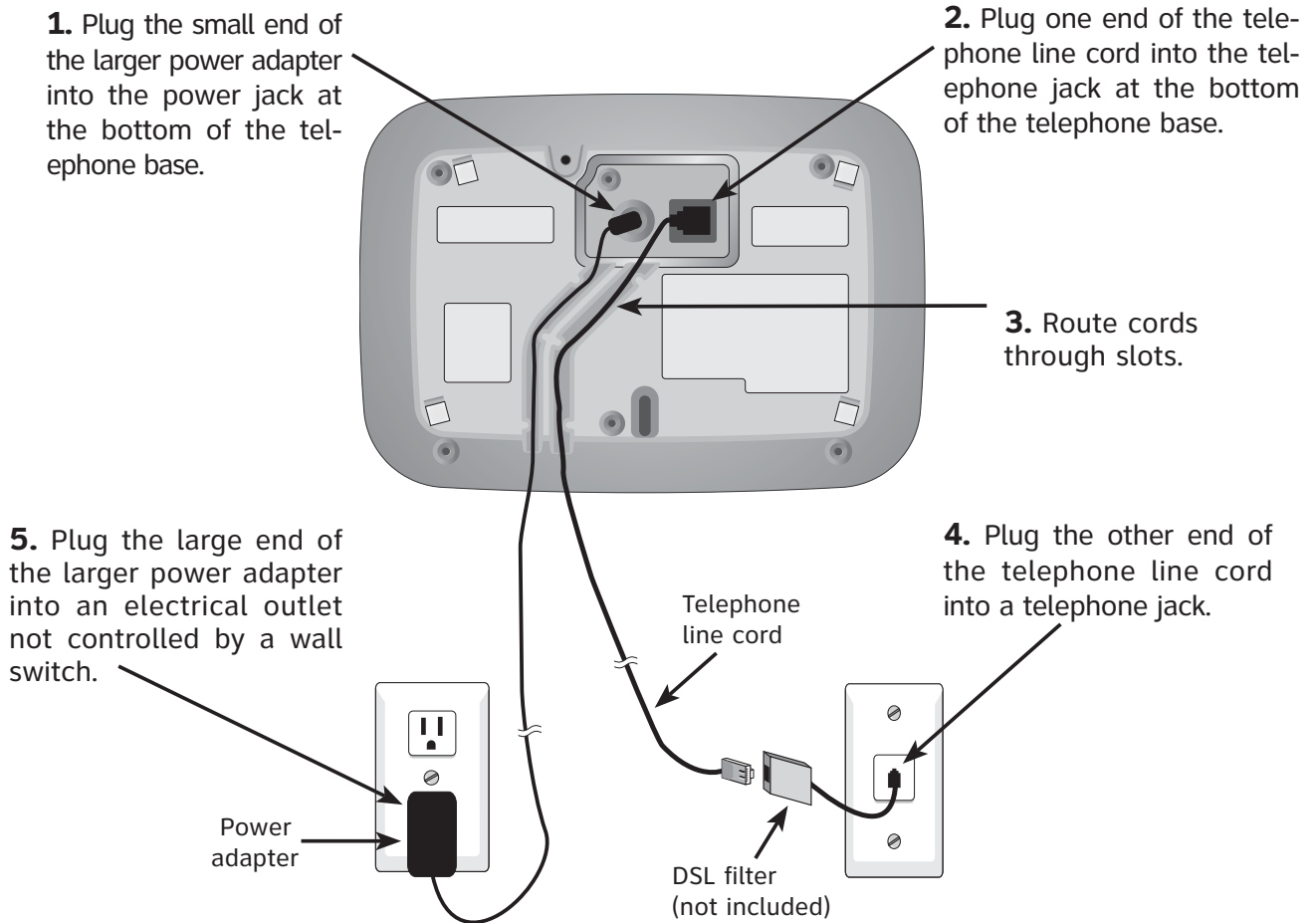
Install the telephone base close to a telephone jack and a power outlet not connected to a wall switch. The telephone base can be placed on a flat surface. For optimum range and better reception, place the telephone base in a high and open location.

Avoid placing the telephone base too close to:

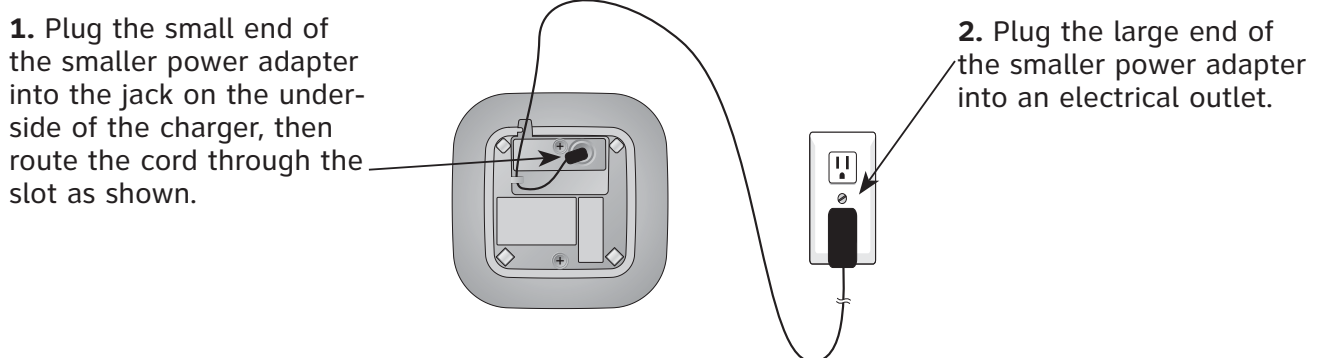
- Communication devices such as: television sets, VCRs, or other cordless telephones.
- Excessive heat sources.
- Noise sources such as a window with traffic outside, motors, microwave ovens, refrigerators, or fluorescent lighting.
- Excessive dust sources such as a workshop or garage.
- Excessive moisture.
- Extremely low temperature.
- Mechanical vibration or shock such as on top of the washing machine or work bench.

Telephone base and charger installation

Telephone base installation



Charger installation

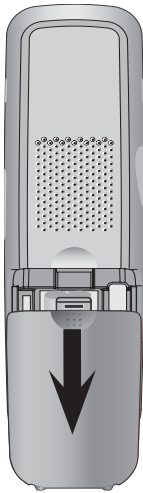


IMPORTANT INFORMATION

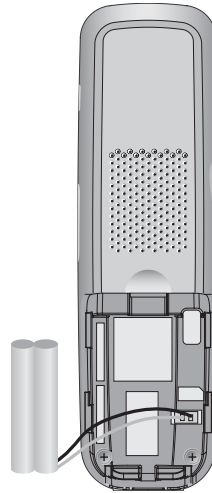
1. Use only the power adapter supplied with this product. To order a replacement power adapter, visit our website at www.telephones.att.com or call **1 (800) 222-3111**. In Canada dial **1 (866) 288-4268**.
2. This power adapter is intended to be correctly oriented in a vertical or floor mount position.
3. If you receive high speed internet through your telephone line (commonly referred to as DSL), and you are experiencing interference during telephone conversations and/or your caller ID features are not functioning properly, install a DSL filter to the telephone line between the telephone base and the telephone wall jack. Contact your DSL provider for a DSL filter.

Battery installation & charging

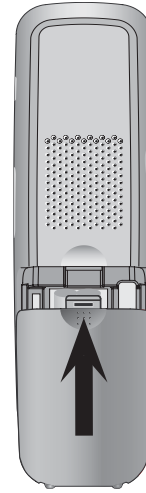
Install the battery as shown below. After installing the battery, you can make and receive short calls. For optimal performance, charge the handset battery for at least 16 hours before use. When fully charged, the handset battery provides approximately five hours of talk time and three days of standby time.



Step 1
Press the tab and slide the battery compartment cover downwards



Step 2
Plug the battery securely into the plug inside the handset battery compartment, matching the color-coded label.



Step 3
Align the cover flat against the battery compartment cover, then slide it upwards until it clicks into place

Step 4
Charge the handset, by placing the handset face up in the telephone base or in the additional charger. The **CHARGE** light will be on when charging.

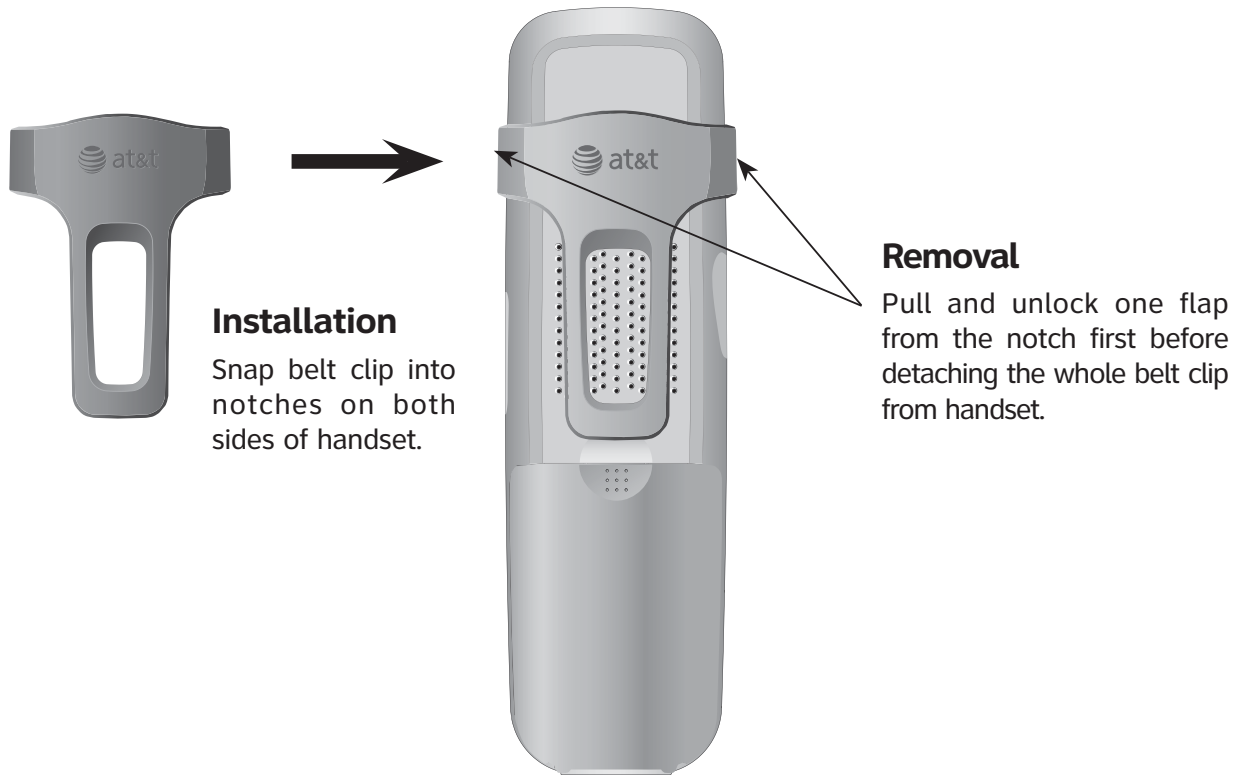


IMPORTANT INFORMATION

1. Use only the supplied rechargeable battery or replacement battery (model BT8001). To order, visit our website at www.telephones.att.com or call **1 (800) 222-3111**. In Canada dial **1 (866) 288-4268**.
2. See the **Troubleshooting** section on page 44 for charging issues.

Getting started

Belt clip & optional headset



For hands-free telephone conversations, you can use any industry standard 2.5 mm headset (purchased separately). For best results, use an AT&T 2.5 mm headset. To purchase a headset, visit our website at www.telephones.att.com or call **1 (800) 222-3111**. In Canada dial **1 (866) 288-4268**.

