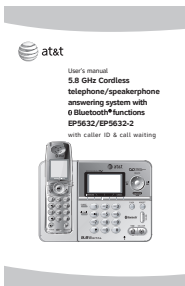


Getting started

Parts checklist

Save your sales receipt and original packaging in case it is necessary to ship your telephone for warranty service.

Check to make sure the telephone package includes the following. The model number of your telephone can be found on the label located on the bottom of the telephone base.



User's manual



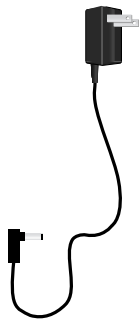
Quick start guide



Telephone base with mounting bracket installed



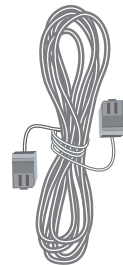
Cordless telephone handset
(1 for EP5632)
(2 for EP5632-2)



Base adapter



Charger for handset
(Only for EP5632-2)



Telephone line cord



Battery
(1 for EP5632)
(2 for EP5632-2)



Belt clip
(1 for EP5632)
(2 for EP5632-2)



Battery compartment cover
(1 for EP5632)
(2 for EP5632-2)

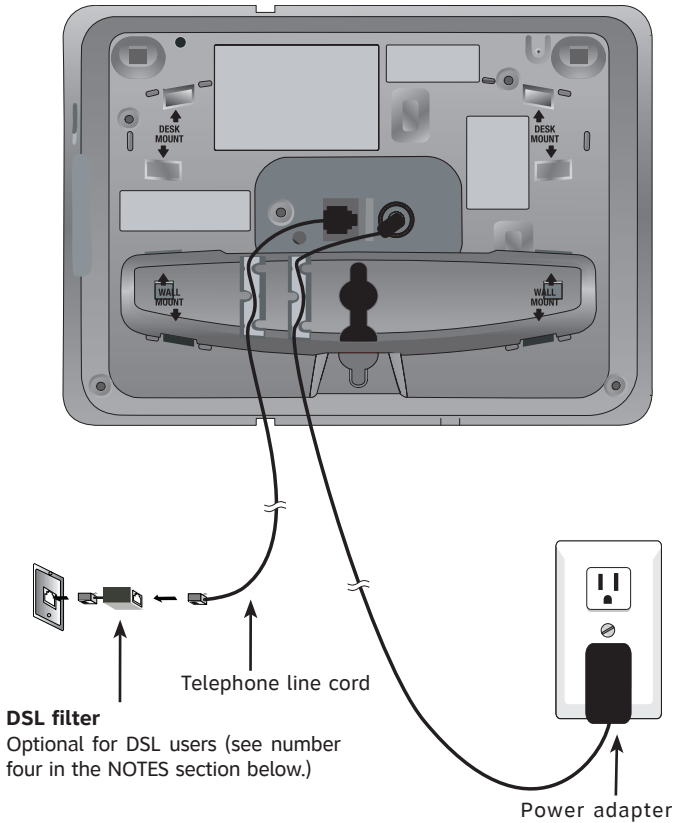
Telephone base installation

Choose a central location close to a telephone jack and a power outlet not connected to a wall switch. The telephone base can be placed on a flat surface or mounted on a standard wall plate. For optimum range and better reception, place the telephone base in a high and open location.

Avoid placing the telephone base too close to:

- Communication devices such as: personal computers, computer routers, television sets, VCRs, wireless routers (wireless broadband, wi-fi, or 802.11) or other cordless telephones.
- Excessive heat sources.
- Noise sources such as a window with traffic outside, motors, microwave ovens, refrigerators, or fluorescent lighting.
- Excessive dust sources such as a workshop or garage.
- Excessive moisture.
- Extremely low temperatures.
- Mechanical vibration or shock such as on top of the washing machine or work bench.

Telephone base installation



NOTES:

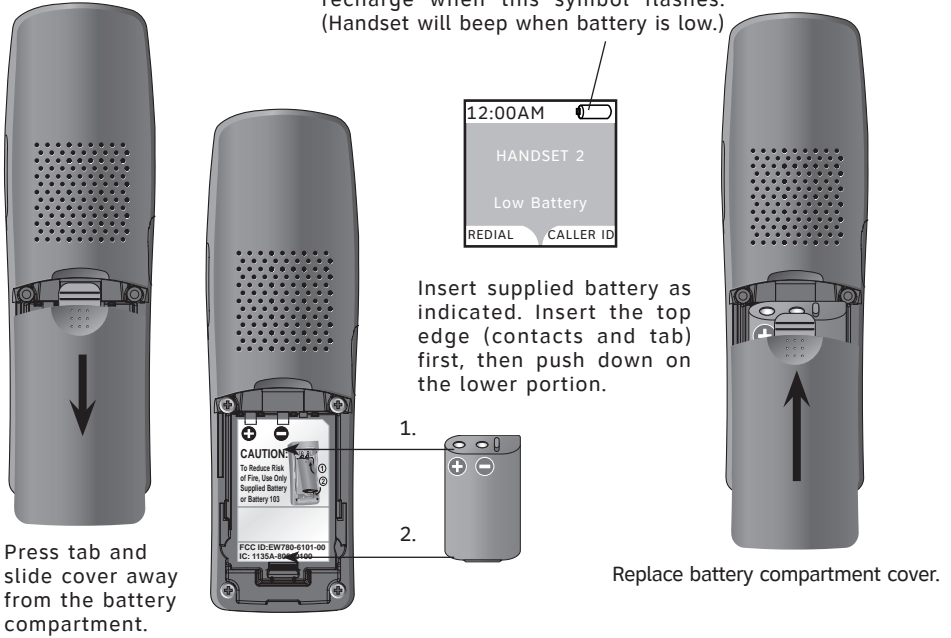
1. Use only the power cord supplied with this product. If you need a replacement, visit our web site at www.telephones.att.com or call 1 (800) 222-3111; in Canada dial 1 (866) 288-4268.
2. Be sure to use an electrical outlet not controlled by a wall switch.
3. This power adapter is intended to be plugged into a vertical wall outlet or a floor outlet. The prongs are not designed to hold the plug in place if it is plugged into a ceiling, under-the-table or cabinet outlet.
4. If you receive high speed internet through your telephone line (commonly referred to as DSL), and you are experiencing inference during telephone conversations and/or your caller ID features are not functioning properly, install a DSL filter to the telephone line between the telephone base and the telephone wall jack. Contact your DSL service provider for a DSL filter.

Battery installation & charging

After installation, place the handset in the telephone base and allow the battery to charge for 16 hours before use. You can keep battery charged by returning the handset to the telephone base after each use. When the battery power is completely depleted, a full recharge takes about 16 hours.

Low battery indicator

Return handset to telephone base to recharge when this symbol flashes. (Handset will beep when battery is low.)



Caution: Use only the supplied rechargeable battery or replacement battery (Model 103, part number 89-0429-00-00).

NOTES:

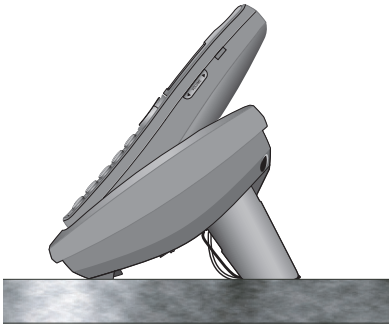
1. When fully charged, the battery in the handset can provide 5 hours of talk time or 3 days of standby time (when idle and away from the telephone base).
2. For installation of the spare battery into the spare battery compartment on the telephone base, please see page XX.

Place handset in telephone base to charge for at least 16 hours before first use.

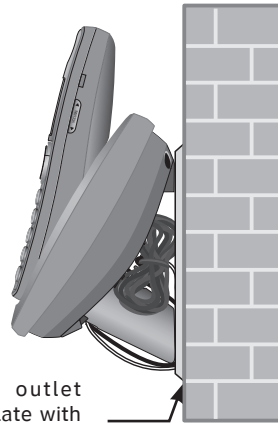


Installation options

Tabletop mount



Wall mount



Telephone outlet
mounting plate with
mounting studs

Wall mounting

The telephone base comes with the mounting bracket already installed for tabletop use. If wall mounting is desired, a telephone outlet wall mounting plate with mounting studs is required. This mounting plate with studs may be available for purchase from many hardware or consumer electronics retailers and may require professional installation.

1. To remove the mounting bracket, hold the telephone base in both hands. Press the two bracket tabs and lift the mounting bracket away from slots (a) and (b).
2. Connect the telephone line cord and power adapter to the jacks on the bottom of the telephone base. Bundle the telephone cord, and secure it with a twist tie before placing it inside the mounting bracket.

