



User's manual VM333/VM333-2/VM333-3/ VM333-4/VM303

Safe & Sound™ Pan & Tilt Full Color Video monitor



Congratulations

on purchasing your new VTech product. Before using this product, please read **Important safety instructions** below.

For support, shopping, and everything new at VTech, visit our website at www.vtechphones.com.

Register online to get an additional 3-month warranty!

Visit www.vtechphones.com.

Registration
Register your product online for enhanced warranty support.

Product news
Learn about the latest VTech products.

Important safety instructions

When using your equipment, basic safety precautions should always be followed to reduce the risk of fire, electric shock and injury, including the following:

- Follow all warnings and instructions marked on the product.
- Adult setup is required.
- This product is intended as an aid. It is not a substitute for responsible and proper adult supervision and should not be used as such.
- This product is not intended for use as a medical monitor.
- Do not use this product near water. For example, do not use it next to a bath tub, wash bowl, kitchen sink, laundry tub or swimming pool, or in a wet basement or shower.
- CAUTION:** Use only the batteries indicated in this manual. There may be a risk of explosion if a wrong type of battery is used for the parent unit. Use only the supplied rechargeable battery or replacement battery pack (BT298555) for the parent unit. Do not dispose of batteries in a fire. They may explode. Dispose of used battery according to the information in **The RBRC® seal**.
- Use only the adapters included with this product. Incorrect adapter polarity or voltage can seriously damage the product. Baby unit power adapter: Input 100-240V AC 50/60 Hz; output: 6V DC 1A Parent unit power adapter: Input 100-120V AC 50/60 Hz; output: 6V DC 800 mA.
- The power adapters are intended to be correctly oriented in a vertical or floor mount position. The prongs are not designed to hold the plug in place if it is plugged into a ceiling, under-the-table or cabinet outlet.
- Unplug this product from the wall outlet before cleaning. Do not use liquid or aerosol cleaners. Use a damp cloth for cleaning.
- Unplug the power cords before replacing batteries.
- Do not cut off the power adapters to replace them with other plugs, as this causes a hazardous situation.
- Do not allow anything to rest on the power cords. Do not install this product where the cords may be walked on or crimped.
- This product should be operated only from the type of power source indicated on the

marking label. If you are not sure of the type of power supply in your home, consult your dealer or local power company.

- Do not overload wall outlets or use an extension cord.
- Do not place this product on an unstable table, shelf, stand or other unstable surfaces.
- This product should not be placed in any area where proper ventilation is not provided. Slots and openings in the back or bottom of this product are provided for ventilation. To protect them from overheating, these openings must not be blocked by placing the product on a soft surface such as a bed, sofa or rug. This product should never be placed near or over a radiator or heat register.
- Never push objects of any kind into this product through the slots because they may touch dangerous voltage points or create a short circuit. Never spill liquid of any kind on the product.
- To reduce the risk of electric shock, do not disassemble this product, but take it to an authorized service facility. Opening or removing parts of the product other than specified access doors may expose you to dangerous voltages or other risks. Incorrect reassembling can cause electric shock when the product is subsequently used.
- You should test the sound reception every time you turn on the units or move one of the components.
- Periodically examine all components for damage.
- Be aware of possible loss of privacy while using public airwaves. Conversations may be picked up by other nursery monitors, cordless phones, scanners, etc.
- Children should be supervised to ensure that they do not play with the product.
- The product is not intended for use by persons (including children) with reduced physical, sensory or mental capabilities, or lack of experience and knowledge, unless they have been given supervision or instruction concerning use of the appliance by a person responsible for their safety.

SAVE THESE INSTRUCTIONS

Cautions

- Use and store the product at a temperature

between 32°F and 104°F.

- Do not expose the product to extreme cold, heat or direct sunlight. Do not put the product close to a heating source.
- Batteries should not be exposed to excessive heat such as bright sunshine or fire.
- Make sure the baby unit(s) and the adapter cord(s) are always out of reach of the baby, at least 3 feet away from the baby or crib, to avoid a possible strangulation hazard.
- Never place the baby unit(s) inside the baby's crib or playpen. Never cover the baby unit(s) or parent unit with anything such as a towel or a blanket.
- Other electronic products may cause interference with your baby monitor. Try installing your baby monitor as far away from these electronic devices as possible: wireless routers, radios, cellular telephones, intercoms, room monitors, televisions, personal computers, kitchen appliances and cordless telephones.

Precautions for users of implanted cardiac pacemakers

Cardiac pacemakers (applies only to digital cordless devices):
Wireless Technology Research, LLC (WTR), an independent research entity, led a multidisciplinary evaluation of the interference between portable wireless devices and implanted cardiac pacemakers. Supported by the U.S. Food and Drug Administration, WTR recommends to physicians that:

Pacemaker patients

- Should keep wireless devices at least six inches from the pacemaker.
- Should NOT place wireless devices directly over the pacemaker, such as in a breast pocket, when it is turned ON.

WTR's evaluation did not identify any risk to bystanders with pacemakers from other persons using wireless devices.

Electromagnetic fields (EMF)

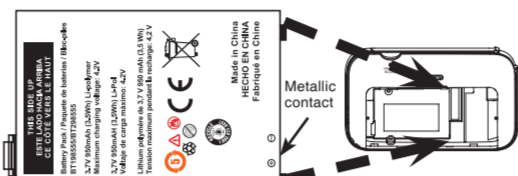
This VTech product complies with all standards regarding electromagnetic fields (EMF). If handled properly and according to the instructions in this user's manual, the product is safe to be used based on scientific evidence available today.

Install the battery

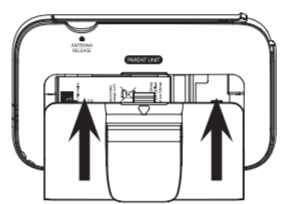
You can power up the parent unit by connecting it to AC power or to the rechargeable battery provided. Even if the parent unit is connected to AC power, we recommend you also install the battery. This guarantees continual operation in case of a power outage.

Install the battery as shown below.

- With the label **THIS SIDE UP** facing up, insert the small tabs of the battery into the slots inside the battery compartment. Make sure the metallic contact is correctly oriented as shown below. Push the battery into the battery compartment until it clicks securely into place.



- Align the battery compartment cover flat against the battery compartment, then slide it towards the center of the parent unit until it clicks into place.



Replace the battery

To replace the battery, press down on the large tab of the battery and pull it out of the battery compartment, then follow the steps above to install the battery.

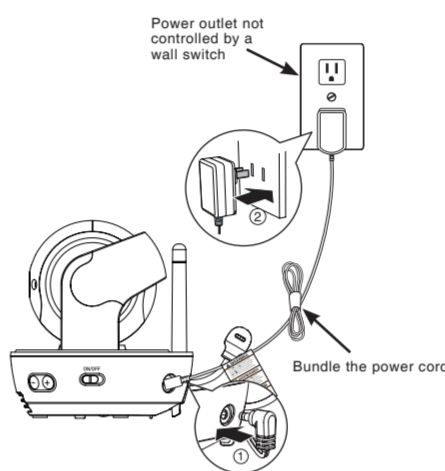


- note**
- The operating time for using the rechargeable battery is short. If you want to monitor your baby for a long time, we recommend you connect the parent unit to AC power.
 - If the parent unit will not be used for a long time, disconnect and remove the battery to prevent possible leakage.
 - Use only the battery supplied with this product.

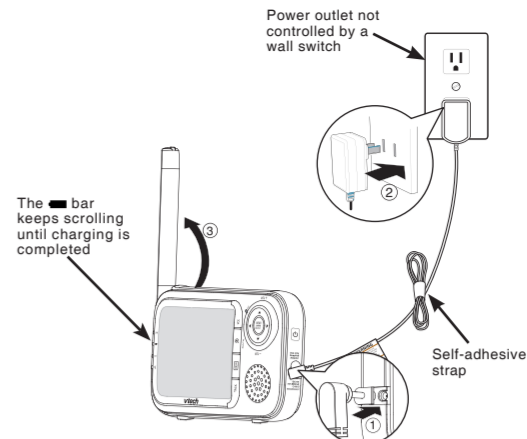
Connect and charge the battery

- note**
- Use only the parent unit power adapter or the baby unit power adapter supplied with this product.
 - The parent unit power adapter and baby unit power adapter are intended to be correctly oriented in a vertical or floor mount position. The prongs are not designed to hold the plug in place if it is plugged into a ceiling, under-the-table or cabinet outlet.
 - Make sure the parent unit, the baby unit and the power adapter cord are out of reach of children.

Connect the baby unit



Connect the parent unit



Charge the parent unit battery

Once you have installed the parent unit and its battery, press and hold **⏻** to turn it on. The battery icon indicates the battery status (see the table below). The parent unit battery is fully charged after 12 hours of continuous charging. The standby time varies depending on the sensitivity level you set, your actual use and the age of the battery.

When the parent unit is operating in battery mode and the battery is low, you need to charge the parent unit without interruption for at least 30 minutes to give the parent unit enough charge to use for a short time. When operating in low battery condition, the parent unit displays Battery low and **⚡**. The parent unit plays short beeps to alert you.

The following table summarizes the battery charge indicators and actions to take.

Battery indicators	Battery status	Action
The battery icon is off and ⚡ displays.	No battery is installed but operates using AC power, or the battery has been installed incorrectly.	Install the parent unit battery. Charge without interruption (at least 30 minutes).

The screen displays Battery low and ⚡ . The ⚡ light flashes.	The battery has very little charge and may be used for only a short time.	Charge without interruption (about 30 minutes).
The battery icon becomes solid 🔋 .	The battery is fully charged.	To keep the battery charged, connect it to AC power when not in use.

note When you charge the battery initially or it is not used for a long period of time, charge it for 12 hours continuously. It takes longer to charge the battery when the parent unit is turned on. To shorten the charging time, turn the parent unit off while charging.

Before use

You may test the baby monitor before initial use, and at regular times thereafter.

To test your baby monitor:

- Place the parent unit and the baby unit in the same room to test the product.
- Press and hold **⏻** on the parent unit the screen displays **Please Wait...**
- Slide **ON/OFF** on the baby unit to turn it on.
- If the parent unit displays an image from the baby unit. Your baby monitor is now ready for use.

- note**
- Make sure the baby unit is at least 3 feet away from the parent unit.
 - If both units are not connected, the parent unit displays No Link for a few seconds. Then it displays Please Wait... and **⚡** flashes.

Positioning the baby monitor

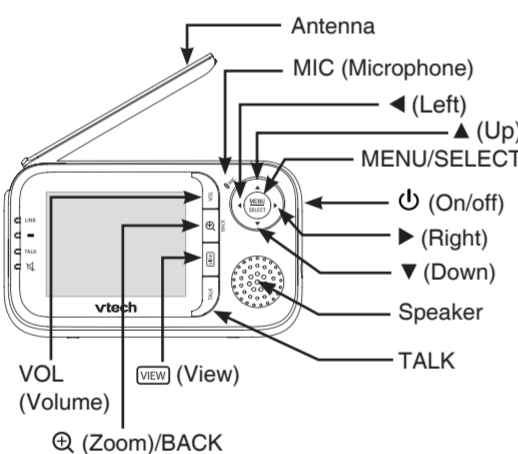
Place the parent unit within the operating range of the baby unit. We recommend the parent unit is at least 3 feet away from the baby unit to avoid audio feedback. If you still experience audio feedback, move the parent unit and the baby unit farther apart.

note For better image quality, do not place the baby unit too far away from your baby.

Operating range

The operating range of the baby monitor is up to 1,000 feet outdoors or 150 feet indoors. The actual operating range may vary depending on the environmental conditions and other interferences such as walls, doors and other obstructions.

Parent unit overview



Parent unit lights

LINK	On when strong signal strength is detected between the parent unit and the selected baby unit. Flashes when the parent unit cannot link to the selected baby unit. Off when the parent unit is turned off.
🔋	On when the parent unit battery is being charged. Flashes when the parent unit battery is low and needs charging. Off when the parent unit battery is fully charged, or when no battery is installed.
TALK	On when the parent unit is talking to the baby unit.
🔊	On when the speaker volume of the parent unit is turned off.

Parent unit display icons

📶	Connection status - 📶 displays when strong signal strength is detected between the baby unit and the parent unit. - 📶 or 📶 displays when moderate signal strength is detected between the baby unit and the parent unit. - 📶 displays when the link between the baby unit and the parent unit is lost.
----------	---

🗣️ or 🗣️ or 🗣️ or 🗣️ or 🗣️	Current view status - Displays the number of the baby unit that is being viewed when in Single Baby unit. - Displays the highlighted baby unit when in Patrol Mode.
🔍	Zoom - Displays when the camera at the baby unit has zoomed in.
🌡️	Temperature alert - Displays when the temperature alert is set to on.
57°F	Real-time temperature - Displays the real-time temperature of the selected baby unit.
🔊 or 🔊 or 🔊 or 🔊	Sound level indicators - Displays the sound level according to the scales of loudness when there is sound transmitted from the baby unit.
🔊 or 🔊	Speaker volume - Displays the speaker volume of the parent unit is turned off. Speaker volume - Displays the speaker volume level while adjusting.
🔋	Battery status - 🔋 animates when the battery is charging. - 🔋 displays solid when the battery is fully charged. - 🔋 displays when the battery is low and needs charging. - 🔋 displays when no battery is installed but operates using AC power, or the battery has been installed incorrectly.

Parent unit main menu icons

📺	Monitoring mode You can choose to monitor in Single Baby unit, Split Baby unit or Patrol Mode if there are more than one baby units in your system.
----------	--

🗣️	Language You can select a language (English, French or Spanish) to be used in all screen displays.
📺	Display - You can change the brightness of the parent unit screen. - You can change the contrast of the parent unit screen.
🔊	Alert tone - You can set whether the parent unit beeps whenever the parent unit operates in low battery condition. - You can set whether the parent unit beeps whenever the link between the parent unit and the baby unit is lost. - You may turn on the sound alert so that the parent unit beeps as soon as the baby unit detects sounds which light up four sound level indicators on the parent unit when the parent unit volume is turned off manually.
🌡️	Temperature - You can set the desired minimum room temperature of the baby unit. - You can set the desired maximum room temperature of the baby unit. - You can set whether the parent unit beeps whenever the temperature is out of the preset temperature range. - You can set the temperature scale of the baby unit.
📺	Sensitivity - You can use the parent unit to change the sound sensitivity level of the baby units.
🔊	Sound activation - You can set the screen to be turned on automatically whenever there are sounds detected from the baby units when the parent unit screen is turned off manually.

🔊	Vibration - You may turn on the vibration alert so that the parent unit vibrates as soon as the baby unit detects sounds which light up three sound level indicators on the parent unit.
🔊	Pair/upair - The baby units and parent unit provided are already paired. You can add or replace baby units (VM303, purchased separately) to your baby monitor system.

Parent unit display messages

🔋 Battery low	When the parent unit is powered by the rechargeable battery and the battery level is low, it needs to be recharged.
🔋 Failed to connect	The parent unit fails to switch to the next baby unit in Single Baby unit or Patrol Mode.
🔋 No Link	The selected baby unit slot is not linked to the parent unit.
🔋 Pairing failed	The selected baby unit cannot be paired with the parent unit.
🔋 Confirm to unpair?	You try to unpair the baby unit(s). The operation needs your confirmation.
🔋 Pairing completed	The selected baby unit has been paired with the parent unit.
🔋 Unpairing completed	The selected baby unit(s) has been unpaired with the parent unit.

Please Wait...	The link between the parent unit and the selected baby unit is lost, or the selected baby unit is out of range, or the selected baby unit slot is empty. When you have only one paired baby unit and the link is lost, or you have multiple paired baby units and the links are lost.
🌡️ Temperature too low	The temperature detected from the selected baby unit is below the set minimum temperature.
🌡️ Temperature too high	The temperature detected from the selected baby unit is above the set maximum temperature.

Using the baby monitor

Adjusting speaker volume for parent unit

You can change the speaker volume from **Volume 1** to **Volume 5**, or turn it off.

When the speaker volume is set to off, **🔊** appears briefly and the **🔊** light turns on.

To adjust the speaker volume:

- Press **VOL** when the parent unit is not in use.
- Press **▲**, **▼**, **⏻** or **▶** to adjust the speaker volume.

Adjusting speaker volume for baby unit

You can change the speaker volume.

To adjust the speaker volume:

Press **+** or **-** on the baby unit at any time.

Adjusting display

LCD brightness

You can change the brightness of the parent unit screen from **Level 1** to **Level 5**.

To set the brightness of the parent unit screen:

- Press **MENU/SELECT** when the parent unit is not in use.
- Press **▼** or **▲** to choose **MONITORING MODE**, then press **MENU/SELECT** to select.
- Press **▼** or **▲** to choose **Single Baby unit, Split Baby unit or Patrol Mode**.
- Press **▼** or **▲** to choose a desired baby unit. The parent unit only displays image of one baby unit. You may change to view images from different baby units by pressing **VIEW** in this mode.

LCD contrast

You can change the contrast of the parent unit screen from **Level 1** to **Level 5**.

To set the contrast of the parent unit screen:

- Press **MENU/SELECT** when the parent unit is not in use.
- Press **▼** or **▲** to choose **DISPLAY**, then press **MENU/SELECT** to select.
- Press **▼** or **▲** to choose **Contrast**.
- Press **◀** or **▶** to choose the desired level of brightness, then press **MENU/SELECT** to confirm your selection.

Setting the language

You can select a language (English, French or Spanish) to be used in all screen displays.

To change the language:

- Press **MENU/SELECT** when the parent unit is not in use.
- Press **▼** or **▲** to choose **LANGUAGE (Langue if French is set, or Idioma if Spanish is set)**.
- Press **◀** or **▶** to choose **English, Français or Español**.
- Press **MENU/SELECT** to confirm your selection.

Monitoring mode

You can choose to monitor in **Single Baby unit, Split Baby unit** or **Patrol Mode** if there are more than one baby units in your system.

To change the monitoring mode:

- Press **MENU/SELECT** when the parent unit is not in use.
- Press **▼** or **▲** to choose **MONITORING MODE**, then press **MENU/SELECT** to select.
- Press **▼** or **▲** to choose **Single Baby unit, Split Baby unit or Patrol Mode**.
 - Single Baby unit** - Press **▼** or **▲** to choose a desired baby unit. The parent unit only displays image of one baby unit. You may change to view images from different baby units by pressing **VIEW** in this mode.
 - Split Baby unit** - The parent unit displays multiple baby unit images in a maximum of four in one screen. If there are more than four baby units in your system, images will be shown on two split screens, which alternates with each other automatically.
 - Patrol Mode** - The parent unit patrols to display images from different baby units in every 7 seconds. You may change to view images from different baby units even though the scanning period is not expired by pressing **VIEW** in this mode.
- Press **MENU/SELECT** to confirm your selection.

note Monitoring mode is not applicable when there is only one baby unit.

Overview

Baby unit overview

