

Abridged user's manual (Canada version)

DS6673-2/DS6673-3/ DS6673-6/DS6673-6C

DECT 6.0 cordless telephone with
DECT 6.0 cordless headset and
BLUETOOTH® wireless technology



Telephones identified with this logo have reduced noise and interference when used with most T-coil equipped hearing aids and cochlear implants. The TIA-1083 Compliant Logo is a trademark of the Telecommunications Industry Association. Used under license.



The ENERGY STAR® program (www.energystar.gov) recognizes and encourages the use of products that save energy and help protect our environment. We are proud to mark this product with the ENERGY STAR® label indicating it meets the latest energy efficiency guidelines.

Introduction

To protect our environment and conserve natural resources, this **Abridged user's manual** provides you with the basic installation and use instructions. A limited set of features are described in abbreviated form.

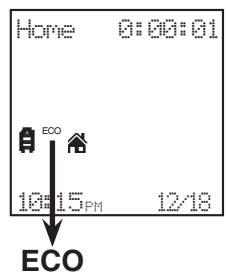
Please refer to the online **Complete user's manual** for a full set of installation and operation instructions at www.vtechcanada.com.

Before using this VTech product, please read **Important safety instructions** on page 13 of this user's manual.

ECO mode

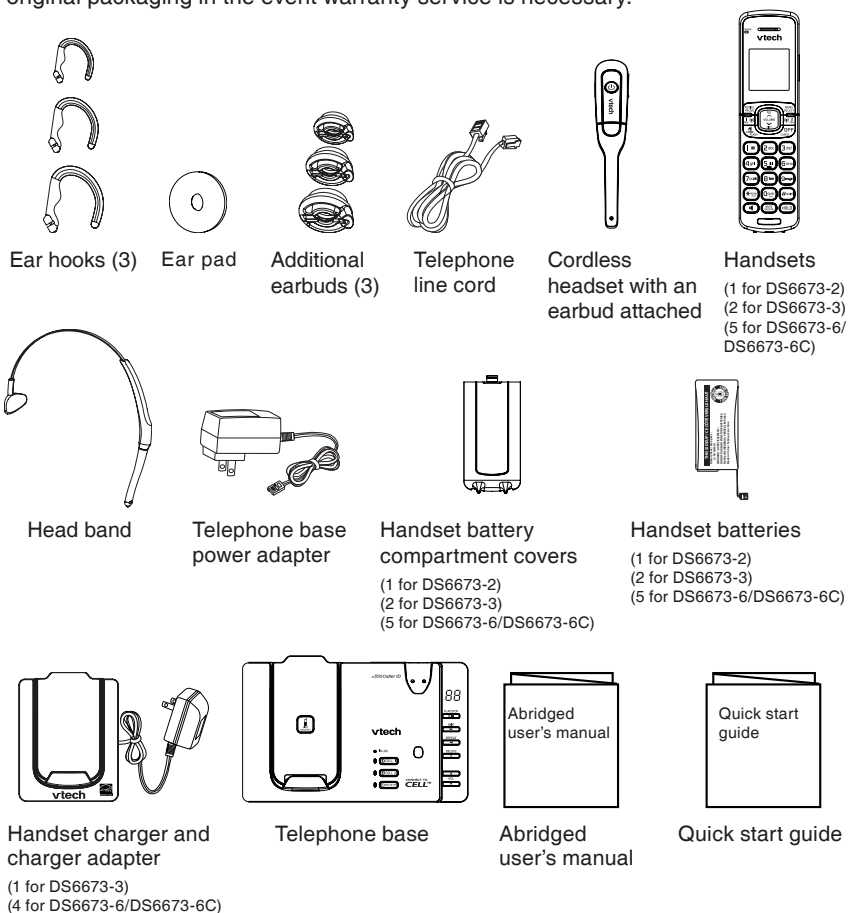
This power conserving technology reduces power consumption for optimal battery performance.

The ECO mode activates automatically during calls. When this mode is on, the handset displays **ECO**.



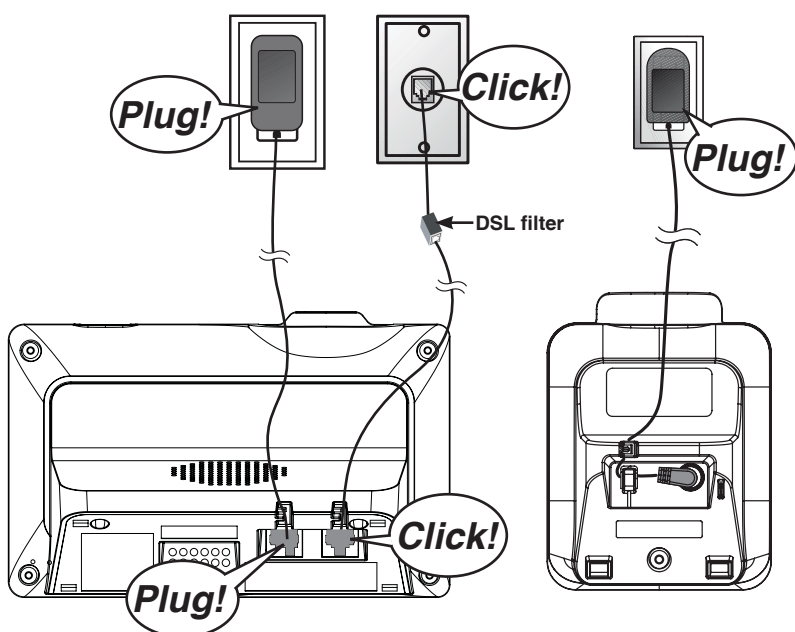
Parts checklist

Your telephone package contains the following items. Save your sales receipt and original packaging in the event warranty service is necessary.



Telephone base and charger installation

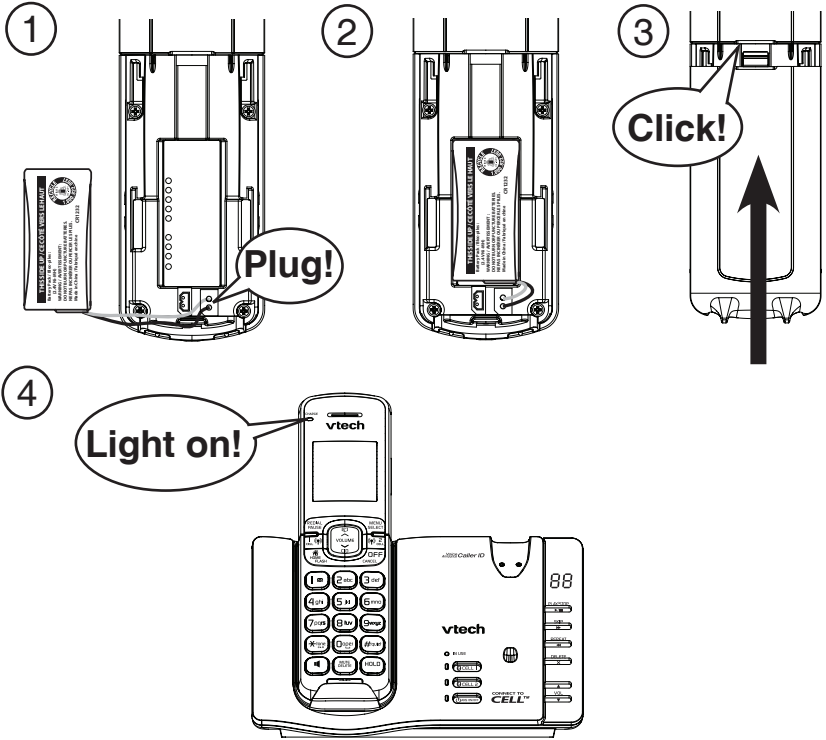
Install the telephone base and charger as shown below.



- Even if you do not subscribe to any conventional telephone service, you can still use the cell lines alone without plugging in a telephone line cord.
- Use only the power adapters and batteries supplied with this product. To order a replacement, visit our website at www.vtechcanada.com or call **1 (800) 267-7377**.
- If you subscribe to telephone service from a cable company or a VoIP service provider, contact your cable/VoIP service provider for more information.

Battery installation and charging

Install the battery as shown below.



**Charge for at least 30 minutes before initial settings.
Charge for 12 hours before initial use.**

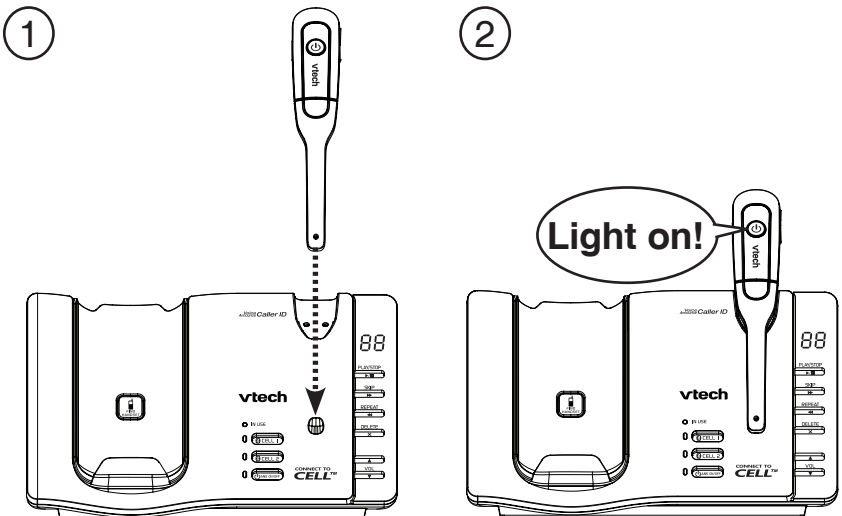
IMPORTANT:

Check for a dial tone by pressing **HOME**, **CELL 1** or **CELL 2**. If you hear a dial tone, the installation is successful.

If you do not hear a dial tone:

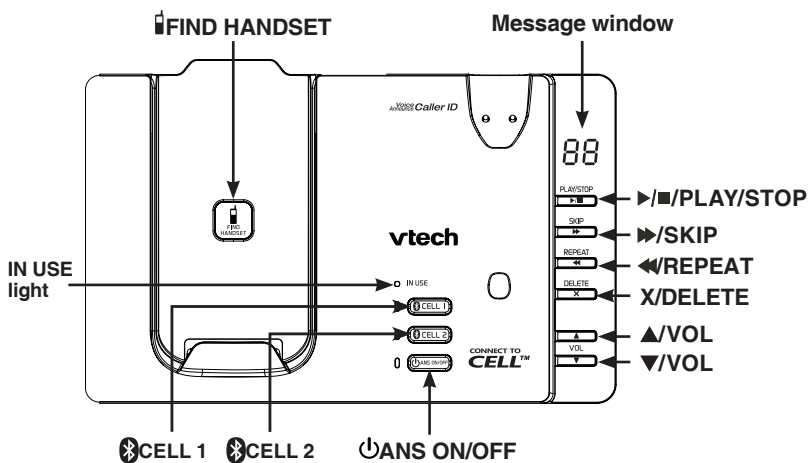
- Make sure the installation procedures described above are properly done.
- It may be a wiring problem. If you have changed your telephone service to digital service from a cable company or a VoIP service provider, the telephone line may need to be rewired to allow all existing telephone jacks to work. Contact your cable/VoIP service provider for more information.

Headset charging

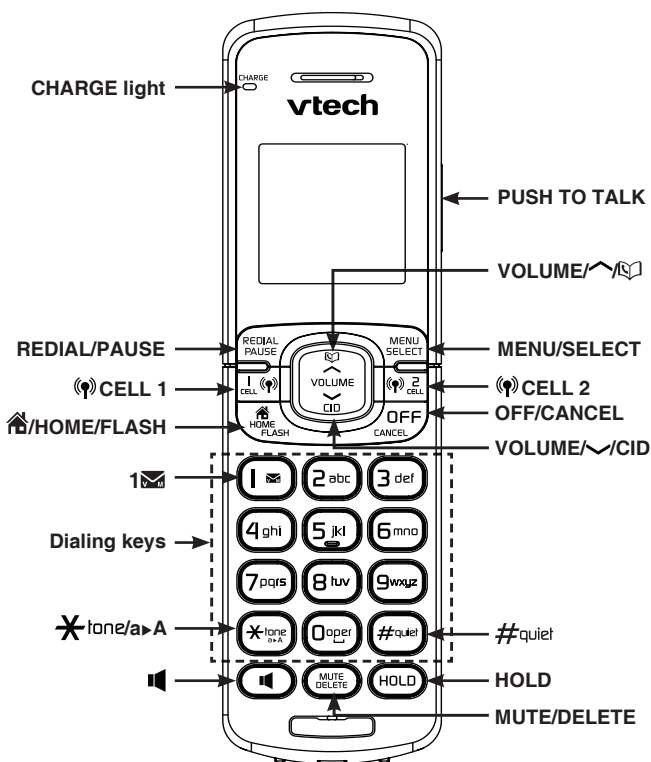


Charge for 3 hours before initial use.

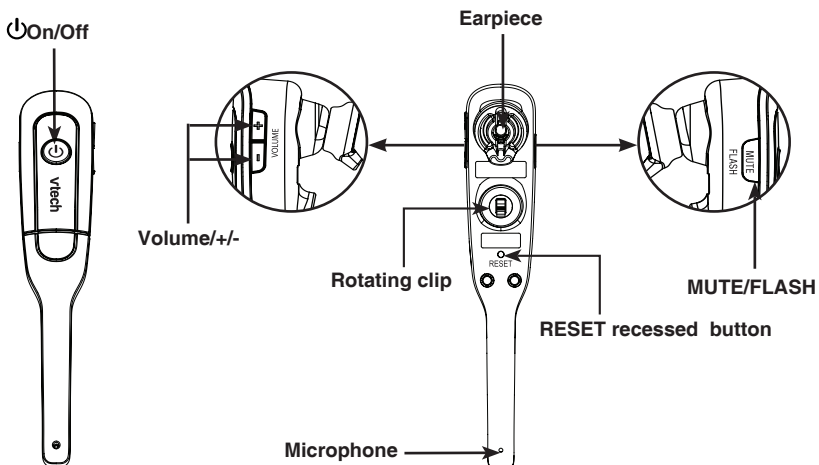
Telephone base overview



Handset overview



Headset overview

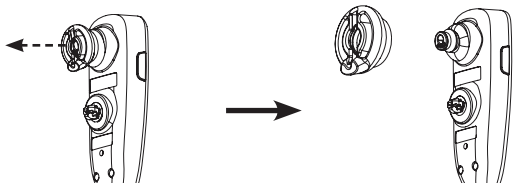


Headset attachments

Earbud

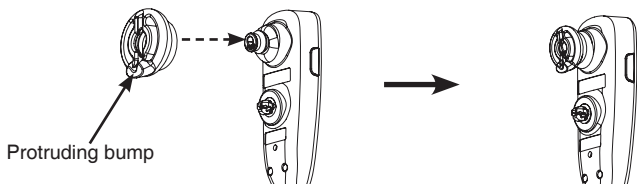
To remove the earbud from the headset earpiece:

Hold both sides of the earbud and then pull the earbud until it separates from the earpiece.



To attach the earbud to the headset earpiece:

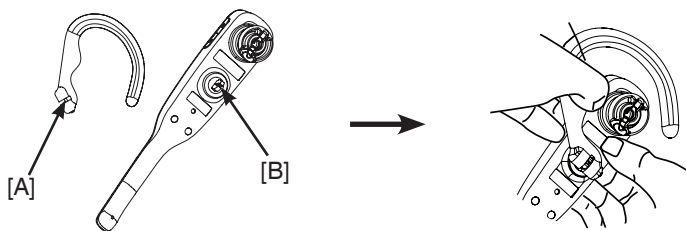
1. Choose an appropriate earbud.
2. Press the earbud towards the earpiece until it clicks into place. Move the earbud around so that the protruding bump on the earbud is pointing towards your mouth when placed on your ear. The protruding bump on the earbud holds the headset securely in your ear.



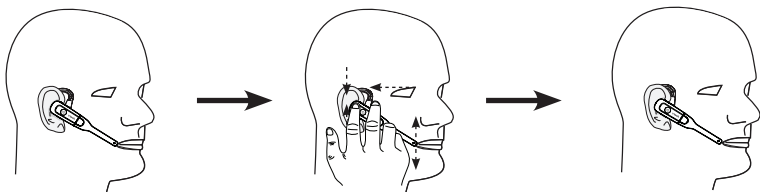
Ear hook

To attach the ear hook to the headset:

1. Remove any headset attachment (earbud excluded) connected to the headset.
2. Insert the ear hook [A] into the rotating clip [B] on the headset until it clicks into place.



3. Hook the headset on your right ear. Adjust the angle of the headset until the microphone is pointing towards your mouth. Firmly grip the earpiece with one hand whenever adjusting the headset microphone up or down.

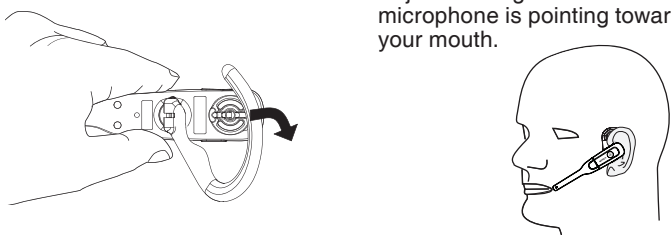


To adjust the headset to wear on your left ear:

1. Hold the headset with one hand. Lift the ear hook upward.
2. Twist the ear hook 180° clockwise.

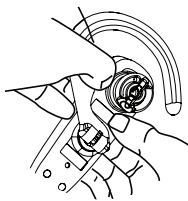


3. Push the ear hook downward.
4. Hook the headset on your left ear. Adjust the angle of the headset until the microphone is pointing towards your mouth.



To remove the ear hook from the headset:

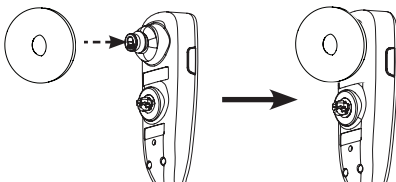
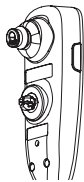
1. Hold the headset with one hand and the ear hook with your other hand.
2. Pull the end of the ear hook up until it separates from the rotating clip on the headset.



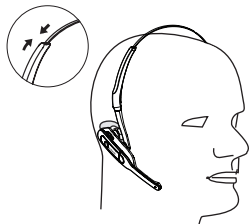
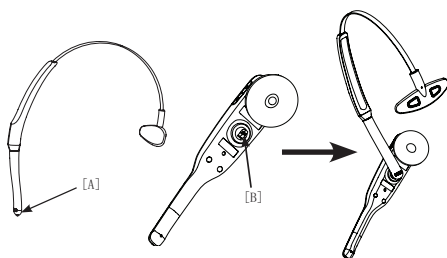
Headband

To attach the head band to the headset:

1. Remove any headset attachment connected to the headset.
2. Attach the ear pad to the headset earpiece.



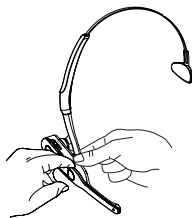
3. To wear the headset on your right ear, insert the end [A] of the head band into the rotating clip [B] on the headset until it clicks into place.
4. Adjust the head band to fit your head. Adjust and rotate the angle of the headset until the microphone is pointing towards your mouth. Firmly grip the earpiece with one hand whenever adjusting the headset microphone up or down.



note To wear on your left ear, hold the headset with one hand and the head band with your other hand. Rotate the head band within the rotating clip on the headset.

To remove the head band from the headset:

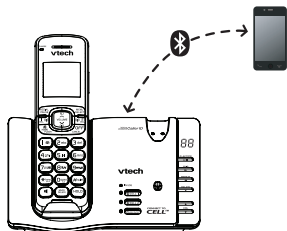
1. Hold the headset with one hand and the head band with your other hand.
2. Pull the end of the head band until it separates from the rotating clip on the headset.



Bluetooth

To use a Bluetooth enabled cell phone with your **DS6673**, you must first pair and connect your Bluetooth cell phone(s) with the telephone base. All **DS6673** handsets can be used to make or answer calls on the cell lines.

Bluetooth wireless technology operates within a short range (a maximum of approximately 30 feet). When you pair a Bluetooth cell phone to the telephone base, place your Bluetooth cell phone closer to the telephone base to maintain sufficient signal strength. For optimal performance, keep your cell phone within 15 feet of the telephone base while using the cell line.



Pair and connect your first Bluetooth cell phone

1. Press and hold **CELL 1**/**CELL 2** on the telephone base for about four seconds. You hear a tone and the **CELL 1**/**CELL 2** light blinks.
2. Turn on the Bluetooth feature of your cell phone. Once your cell phone finds your VTech phone (**VTech DS6673**), press the appropriate key on your cell phone to continue the pairing process.
 - Your cell phone may prompt you to enter the PIN of the telephone base. The default PIN of the telephone base is **0000**.