

Go to [www.vtechphones.com](http://www.vtechphones.com) to register your product for enhanced warranty support and latest VTech product news

SN6307

Photo Speed Dial Handset for use with VTech Careline series



# vtech®

## User's manual

### Congratulations

on purchasing your new VTech product. Before using this product, please read **Important safety instructions**.

This user's manual provides you with installation and use instructions. Please read this manual thoroughly to ensure proper installation and operation of this VTech product.

For support, shopping, and everything new at VTech, visit our website at [www.vtechphones.com](http://www.vtechphones.com).



Telephones identified with this logo have reduced noise and interference when used with most T-coil equipped hearing aids and cochlear implants. The TIA-1083 Compliant Logo is a trademark of the Telecommunications Industry Association. Used under license.



The ENERGY STAR® program ([www.energystar.gov](http://www.energystar.gov)) recognizes and encourages the use of products that save energy and help protect our environment. We are proud to mark this product with the ENERGY STAR® label indicating it meets the latest energy efficiency guidelines.

### Important safety instructions

When using your telephone equipment, basic safety precautions should always be followed to reduce the risk of fire, electric shock and injury, including the following:

1. Read and understand all instructions.
2. Follow all warnings and instructions marked on the product.
3. Unplug this product from the wall outlet before cleaning. Do not use liquid or aerosol cleaners. Use a dry non-abrasive cloth for cleaning.
4. Do not use this product near water such as near a bath tub, wash bowl, kitchen sink, laundry tub or a swimming pool, or in a wet basement or shower.
5. Do not place this product on an unstable table, shelf, stand or other unstable surfaces.
6. Slots and openings in the back or bottom of the telephone base and handset are provided for ventilation. To protect them from overheating, these openings must not be blocked by placing the product on a soft surface such as a bed, sofa or rug. This product should never be placed near or over a radiator or heat register. This product should not be placed in any area where proper ventilation is not provided.
7. This product should be operated only from the type of power source indicated on the marking label. If you are not sure of the type of power supply in your home or office, consult your dealer or local power company.
8. Do not allow anything to rest on the power cord. Do not install this product where the cord may be walked on.
9. Never push objects of any kind into this product through the slots in the telephone base or handset because they may touch dangerous voltage points or create a short circuit. Never spill liquid of any kind on the product.
10. To reduce the risk of electric shock, do not disassemble this product, but take it to an authorized service facility. Opening or removing parts of the telephone base or handset other than specified access doors may expose you to dangerous voltages or other risks. Incorrect reassembling can cause electric shock when the product is subsequently used.
11. Do not overload wall outlets and extension cords.
12. Unplug this product from the wall outlet and refer servicing to an authorized service facility under the following conditions:
  - When the power supply cord or plug is damaged or frayed.
  - If liquid has been spilled onto the product.
  - If the product has been exposed to rain or water.
  - If the product does not operate normally by following the operating instructions. Adjust only those controls that are covered by the operation instructions. Improper adjustment of other controls may result in damage and often requires extensive work by an authorized

technician to restore the product to normal operation.

- If the product has been dropped and the telephone base and/or handset has been damaged.
  - If the product exhibits a distinct change in performance.
13. Avoid using a telephone (other than cordless) during an electrical storm. There is a remote risk of electric shock from lightning.
  14. Do not use the telephone to report a gas leak in the vicinity of the leak. Under certain circumstances, a spark may be created when the adapter is plugged into the power outlet, or when the handset is replaced in its cradle. This is a common event associated with the closing of any electrical circuit. The user should not plug the phone into a power outlet, and should not put a charged handset into the cradle, if the phone is located in an environment containing concentrations of flammable or flame-supporting gases, unless there is adequate ventilation. A spark in such an environment could create a fire or explosion. Such environments might include: medical use of oxygen without adequate ventilation; industrial gases (cleaning solvents; gasoline vapors, etc.); a leak of natural gas; etc.
  15. Only put the handset of your telephone next to your ear when it is in normal talk mode.
  16. The power adapter is intended to be correctly oriented in a vertical or floor mount position. The prongs are not designed to hold the plug in place if it is plugged into a ceiling, under-the-table or cabinet outlet.

### SAVE THESE INSTRUCTIONS

### Battery

- Use only the battery provided or equivalent. To order a replacement, visit our website at [www.vtechphones.com](http://www.vtechphones.com) or call 1 (800) 595-9511. In Canada, go to [www.vtechcanada.com](http://www.vtechcanada.com) or call 1 (800) 267-7377.
- Do not dispose of the battery in a fire. Check with local waste management codes for special disposal instructions.
- Do not open or mutilate the battery. Released electrolyte is corrosive and may cause burns or injury to the eyes or skin. The electrolyte may be toxic if swallowed.
- Exercise care in handling batteries in order not to create a short circuit with conductive materials.
- Charge the battery provided with or identified for use with this product only in accordance with the instructions and limitations specified in this manual.

### Precautions for users of implanted cardiac pacemakers

Cardiac pacemakers (applies only to digital cordless telephones):  
Wireless Technology Research, LLC (WTR), an independent research entity, led a multidisciplinary

evaluation of the interference between portable wireless telephones and implanted cardiac pacemakers. Supported by the U.S. Food and Drug Administration, WTR recommends to physicians that:

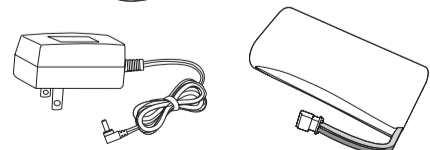
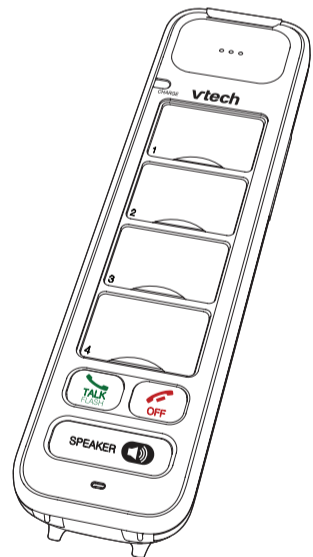
- Pacemaker patients**
- Should keep wireless telephones at least six inches from the pacemaker.
  - Should NOT place wireless telephones directly over the pacemaker, such as in a breast pocket, when it is turned ON.
  - Should use the wireless telephone at the ear opposite the pacemaker.
- WTR's evaluation did not identify any risk to bystanders with pacemakers from other persons using wireless telephones.

### About cordless telephones

- **Privacy:** The same features that make a cordless telephone convenient create some limitations. Telephone calls are transmitted between the telephone base and the cordless handset by radio waves, so there is a possibility that the cordless telephone conversations could be intercepted by radio receiving equipment within range of the cordless handset. For this reason, you should not think of cordless telephone conversations as being as private as those on corded telephones.
- **Electrical power:** The telephone base of this cordless telephone must be connected to a working electrical outlet. The electrical outlet should not be controlled by a wall switch. Calls cannot be made from the cordless handset if the telephone base is unplugged, switched off or if the electrical power is interrupted.
- **Potential TV interference:** Some cordless telephones operate at frequencies that may cause interference to televisions and VCRs. To minimize or prevent such interference, do not place the telephone base of the cordless telephone near or on top of a TV or VCR. If interference is experienced, moving the cordless telephone farther away from the TV or VCR often reduces or eliminates the interference.
- **Rechargeable batteries:** Exercise care in handling batteries in order not to create a short circuit with conducting material such as rings, bracelets and keys. The battery or conductor may overheat and cause harm. Observe proper polarity between the battery and the battery charger.
- **Nickel-metal hydride rechargeable batteries:** Dispose of these batteries in a safe manner. Do not burn or puncture the battery. Like other batteries of this type, if burned or punctured, they could release caustic material which could cause injury.

### Parts checklist

Your product package contains the following items. Save your sales receipt and original packaging in the event warranty service is necessary.

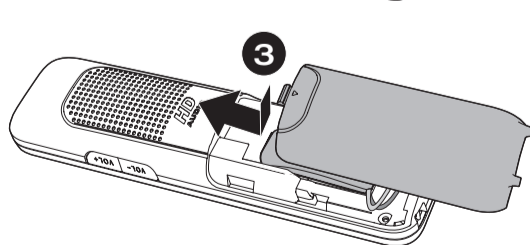
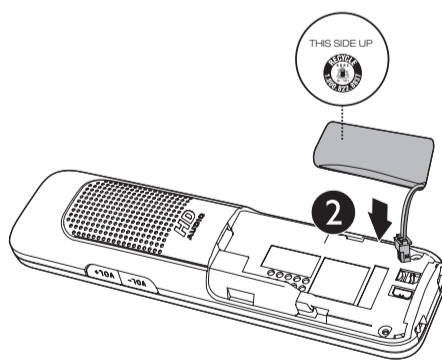
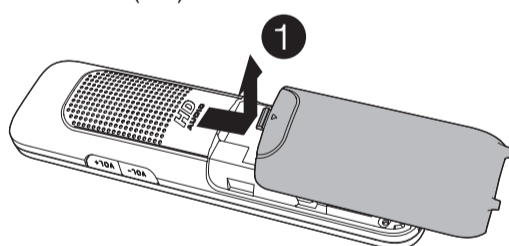


User's manual

### Install the battery

Install the battery as shown below.

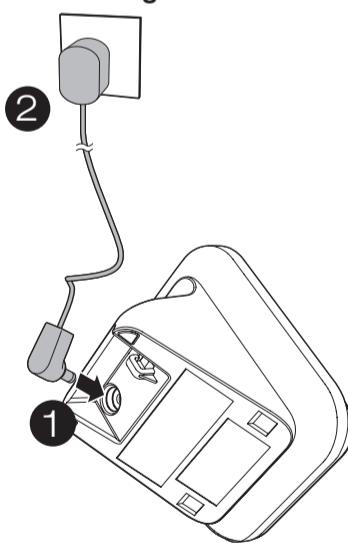
- note**
- Use only the battery provided or equivalent.
  - If the handset will not be used for a long time, disconnect and remove the battery to prevent possible leakage.
  - To purchase a replacement battery, visit our website at [www.vtechphones.com](http://www.vtechphones.com) or call 1 (800) 595-9511. In Canada, go to [www.vtechcanada.com](http://www.vtechcanada.com) or call 1 (800) 267-7377.



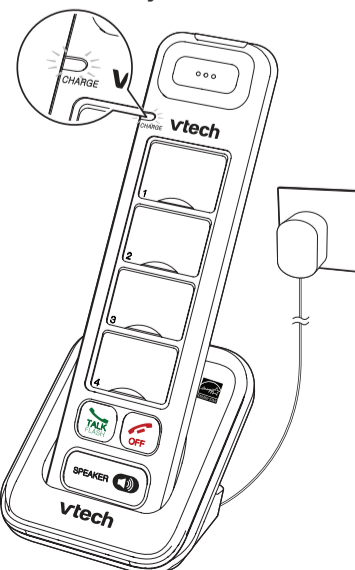
### Connect and charge the battery

- note**
- Use only the adaptor provided.
  - Charge the battery provided with or identified for use with this product only in accordance with the instructions and limitations specified in this manual.
  - The adapter is intended to be correctly oriented in a vertical or floor mount position. The prongs are not designed to hold the plug in place if it is plugged into a ceiling, under-the-table or cabinet outlet.

### Connect the charger



### Charge the battery



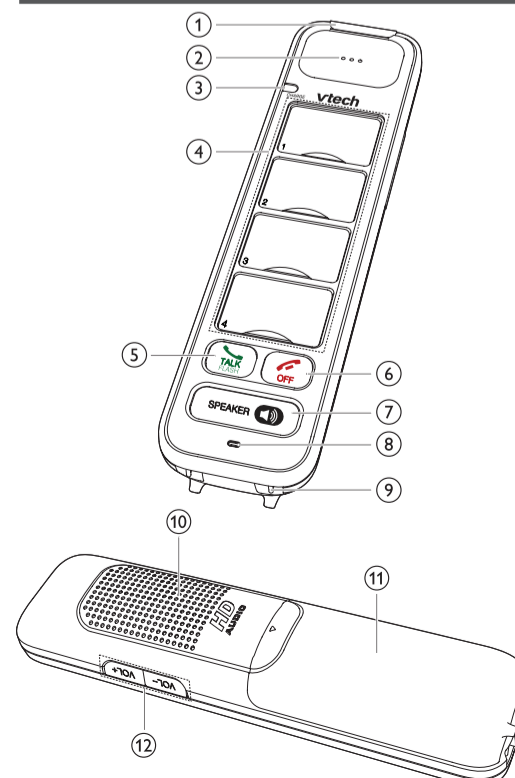
Once you have installed the battery, the CHARGE light indicates the battery status (see the table below).

- note**
- For best performance, keep the handset in the charger when not in use.
  - The battery is fully charged after 12 hours of continuous charging.

The following table summarizes the battery charge indicators and actions to take.

CHARGE light	Battery status	Action
Flashes red	The battery has no charge or very little charge. The handset cannot be used.	Charge without interruption (at least 30 minutes).
Red	The battery has enough charge to be used for a short time.	Charge without interruption (at least 30 minutes).
Green	The battery is fully charged.	To keep the battery charged, place it in the charger when not in use.

### Handset overview



### 1 – Incoming LED

### 2 – Earpiece

### 3 – CHARGE light

### 4 – Photo speed dial keys

- Press to dial a preset number.

### 5 – TALK OFF

- Make or answer a call.

### 6 – SPEAKER

- Hang up a call.
- Silence the ringer temporarily while the phone is ringing.

### 7 – SPEAKERPHONE

- Make or answer a call using the speakerphone.
- Switch between the speakerphone and the earpiece.

### 8 – Microphone

### 9 – Charging pole

### 10 – Speakerphone

### 11 – Battery compartment cover

### 12 – VOL-/VOL+

- Adjust the ringer volume and the listening volume.

### Charger overview



### 1 – Charging pole

### Before use

Check the model number of your Careline series telephone base before you continue for the settings and operations.

There are two types of Careline series telephone base:

- **Type A:** SN6127, SN6187;
- **Type B:** SN1157, SN1197, SN6147, SN6196, SN6197.

**note** You can find the model number at the bottom of the telephone base.

### Add and register a handset

Register each new SN6307 handset to your Careline series telephone base before use. Your telephone system supports a maximum of 12 handsets.

**note** Charge the new handset without interruption for at least 30 minutes before registering it to the telephone base.

### To register your handset to a Type A base:

1. Press and hold **FIND HANDSET** at the telephone base until the **IN USE** light turns solid red.
2. Put the handset in the charger. The handset **CHARGE** light flashes red and green to indicate the registration is in progress.

You hear a confirmation tone when the registration process completes. It takes up to 60 seconds to complete the registration. If registration fails, you hear an error tone. Start again from Step 1 above.

**note**

- You cannot register a handset if any other system device is in use.
- When you already have 12 registered devices and you try to register another handset to the telephone base, you hear four beeps from the telephone base.

### To register your handset to a Type B base:

1. Press **MENU** on the telephone base when it is not in use.
2. Press **▼** or **▲** to scroll to **Settings**.
3. Press **▼** or **▲** to scroll to **Registration**, then press **SELECT**. The telephone base shows **Registering... Please wait**.
4. Put the handset in the charger. The handset **CHARGE** light flashes red and green to indicate the registration is in progress.

