

Go to www.vtechphones.com to register your product for enhanced warranty support and the latest VTech product news.

VC7002
Accessory Open/Closed Sensor
for use with
VTech models VC7151/VC7152

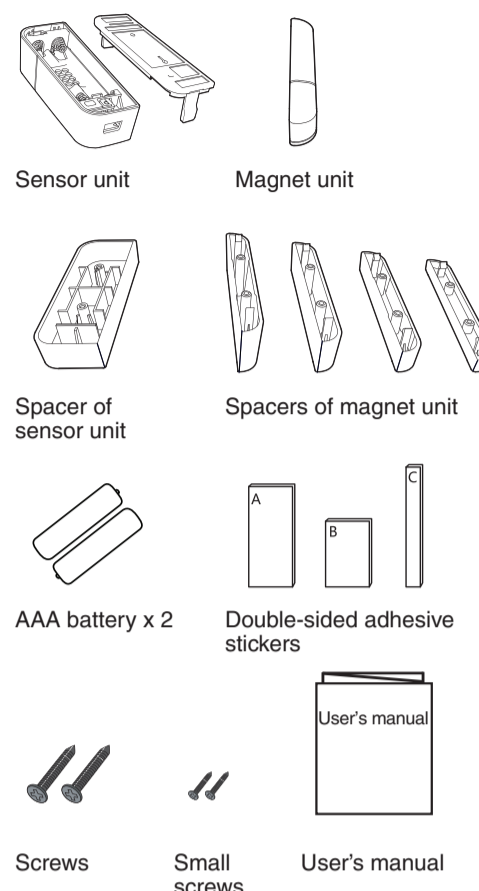


Congratulations

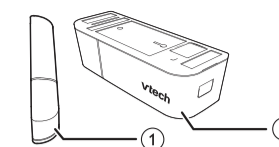
on purchasing your new VTech product. Before using this product, please read **important safety instructions**. This manual has instructions on how to set up and register your new sensor. For instructions on sensor settings, see the Abridged user's manual that came with your VC7151/VC7152. You may also view or download the online User's manual of VC7151/VC7152 for a full set of installation and operation instructions at www.vtechphones.com. In Canada, visit www.vtechcanada.com.

What's in the box

Your product package contains the following items. Save your sales receipt and original packaging in the event warranty service is necessary.

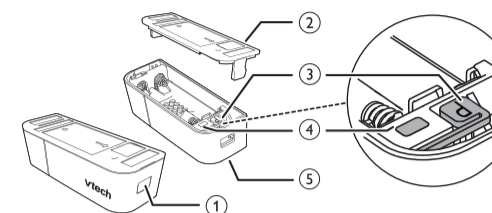


Sensor overview



- 1 – Magnet unit
- 2 – Sensor unit

Sensor unit overview

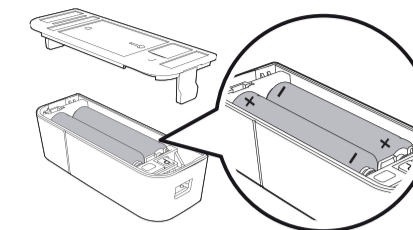


- 1 – Latch button
 - Press to open the battery compartment case.
- 2 – Back cover
- 3 – Pair button
 - **Press and hold** to enter the registration mode.
- 4 – LED light
 - Red for a second when the sensor is powered on.
 - Flashes red when the sensor is in the registration mode.
- 5 – Battery compartment case

Before use

Install batteries to the open/closed sensor

1. Press the latch button on the sensor to open the battery compartment case.
2. Insert two AAA batteries into the battery compartment.



NOTES

- Do not mix old and new batteries. Do not mix alkaline, standard (Carbon-Zinc) or rechargeable (Ni-Cad, Ni-Mh, etc) batteries.
- While you insert the batteries, make sure the polarities are correct.
- The batteries operate properly under the temperature between -18°C (0°F) and 50°C (122°F).

Add and register a sensor

Add your new VC7002 open/closed sensor to your VC7151/VC7152 telephone system. Register each sensor with the telephone base before use.

To register a open/closed sensor:

1. **Press and hold** **⏏/FIND HANDSET** on the telephone base for about 4 seconds until the **IN USE** light turns on. The telephone base shows **Registering...** Please wait.
2. **Press and hold** the pair button on the open/closed sensor, until the LED light flashes red, to enter the registration mode.

The telephone base shows **Open/Closed X* registered** and you hear a beep when the registration process completes. The registration process takes about 90 seconds to complete.

* **Open/Closed X** refers to the sensor's name. **X** refers to the system-assigned number of the sensor.



vtech[®]
User's manual

Replacing a sensor

If you have purchased this new VC7002 accessory sensor to replace an old sensor, follow the instructions to deregister your old sensor. The VC7151/VC7152 telephone system can support up to 400 sensors.

To replace a sensor, deregister the registered sensor first, and then register this new sensor to the telephone base.

To deregister a sensor:

1. Press **MENU** when the phone is not in use.
2. Enter the code ***33734#** to access the **DEREGISTER** menu.
3. Scroll to **Single sensor**, and then press **SELECT**.
4. Scroll to the sensor you want to deregister, and then press **SELECT**.
5. Press **YES** to confirm the deregistration.

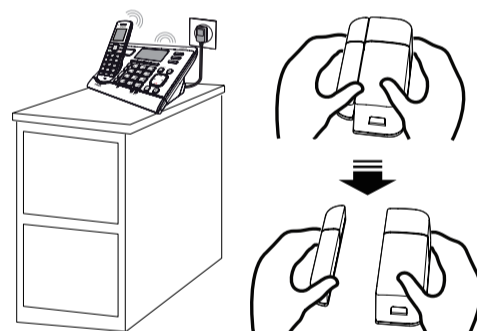
The telephone base shows **Open/Closed X is deregistered** and you hear a beep when the deregistration process completes.

To deregister all sensors:

1. Press **MENU** when the phone is not in use.
2. Enter the code ***33734#** to access the **DEREGISTER** menu.
3. Press **SELECT** to select **All sensors**.
4. Press **YES** to confirm the deregistration.

The telephone base shows **All sensors are deregistered** and you hear a beep when the deregistration process completes.

Check the sensor before use



1. Separate the sensor unit from the magnet unit.

- You will hear an announcement alert - "Open/Closed X is open", from the handset and the telephone base.
- The handset and the telephone base will display **Open/Closed X is open**, and then **⏏**.
- The **SENSOR** light on the telephone base will turn red.

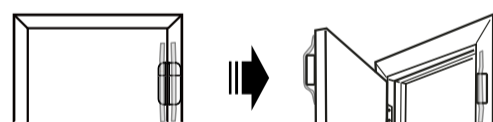
2. Combine the sensor unit with the magnet unit.

- **⏏** will disappear from the handset and the telephone base.
- The **SENSOR** light on the telephone base will turn off.

Test the location for the sensor

You can mount the open/closed sensor on a door, window, or medicine cabinet that opens or closes.

1. Take the sensor to the desired mounting location, and hold at the object and its respective frame.
2. Open the door, window, or medicine cabinet and listen for an announcement alert at your handset and telephone base.



Use your handset to enter the **Settings** menu, and then the **Sensor setup** menu. Follow the steps to test the sensor's signal strength. Move the base closer to the garage, or move the sensor closer to the base, if the sensor is out of range.

NOTES

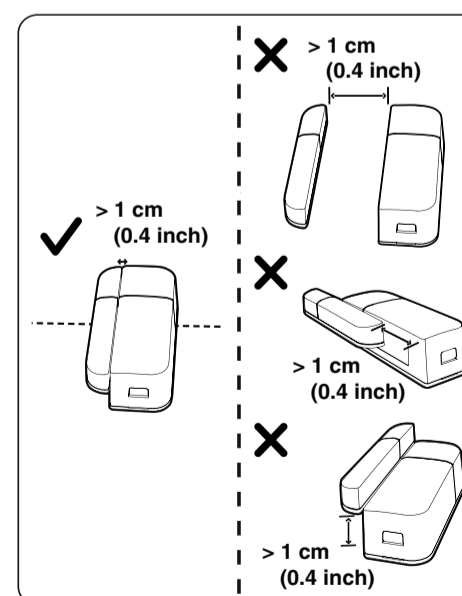
- Use adhesive tape to hold the sensor temporarily whilst testing.
- Mount the sensor to a higher position to avoid obstacles or blockages. Depending on surroundings and obstructing factors, like walls or cabinets, the sensor may not transmit to the base properly.

Mount the sensor

We recommend you to mount the magnet unit on a door, window, or medicine cabinet, and mount the sensor unit on its respective frame.

NOTES

- Make sure the mounting surface is clean. A textured surface or any imperfections to a smooth surface can keep the sticker from making a strong bond.
- Make sure you align the magnet unit with sensor unit when mounting.
- The distance between the sensor unit and magnet unit must be **less than 1 cm (0.4 inch)**.
- The door images in this installation guide are for conceptual reference only.



TIPS

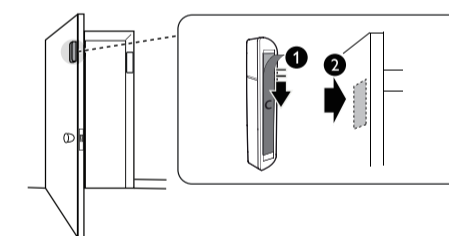
- If there is a difference in level between the door, window, or medicine cabinet and its respective frame, or the frame is too narrow or has some decorative molding, you can choose to mount the open/closed sensor with spacer. You can also mount the magnet unit on the frame, and the sensor unit on the door, window, or medicine cabinet instead.
- You can choose to mount the sensor unit with sticker first, and then use screws later if you decide to mount it at that location for long term.

Mount the magnet unit

Without spacer

Mount with sticker

1. Attach the sticker **C** onto the rectangular area at the rear side of the magnet unit,
2. Stick the magnet unit onto the door.

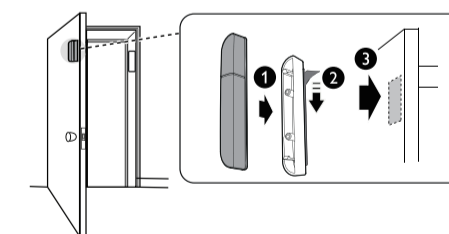


With spacer

Mount with sticker

You can choose one out of the four spacers with suitable height, and then add it to the magnet unit.

1. Push the spacer towards the magnet unit until it securely clicks into place.
2. Attach the sticker **C** onto the rectangular area at the rear side of the spacer.
3. Stick the magnet unit onto the door.



Alerts

