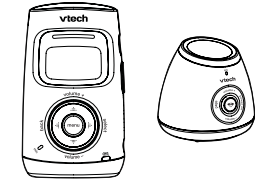




**User's manual**  
**DM202/DM202-2**  
**Safe & Sound™**  
**Full Color Video and Audio**  
**Monitor**



**Congratulations**

on purchasing your new VTech product. Before using this product, please read **important safety instructions**.

For support, shopping, and everything new at VTech, visit our website at [www.vtechphones.com](http://www.vtechphones.com).

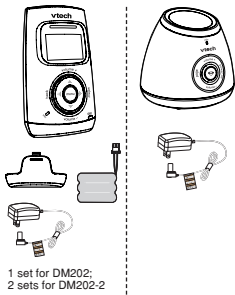
**Register online to get an additional 3-month warranty!**

Visit [www.vtechphones.com](http://www.vtechphones.com).

**Registration**  
 Register your product online for enhanced warranty support.

**Product news**  
 Learn about the latest VTech products.

**What's in the box**



1 set for DM202;  
 2 sets for DM202-2

**Install the battery**

You can power up the parent unit by connecting it to AC power or to the rechargeable battery provided. Even if the parent unit is connected to AC power, we recommend you also install the battery. This guarantees continual operation in case of a power outage.

**NOTE**  
 Use only the battery supplied with this product.

Install the battery as shown below.



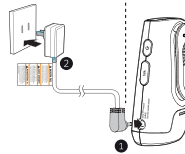
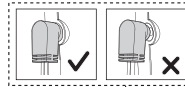
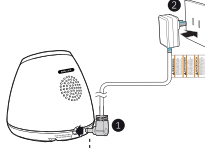
**NOTE**  
 Make sure the supplied rechargeable battery with the label **THIS SIDE UP** facing up.



**Connect and charge the battery**

- NOTES**
- Use only the parent unit power adapter or the baby unit power adapter supplied with this product.
  - Make sure the electrical outlets are not controlled by wall switches.
  - The parent unit power adapter and baby unit power adapter are intended to be correctly oriented in a vertical or floor mount position. The prongs are not designed to hold the plug in place if it is plugged into a ceiling, under-the-table or cabinet outlet.
  - Make sure the parent unit, the baby unit and the power adapter cord are out of reach of children.

**Connect the baby monitor**



**Replace the battery**

To replace the battery, unplug the battery connector from the socket, and then pull the battery out of the battery compartment. Follow the steps above to install the battery.

- NOTES**
- The operating time for using the rechargeable battery is short. If you want to monitor your baby for a long time, we recommend you connect the parent unit to AC power.
  - If the parent unit will not be used for a long time, disconnect and remove the battery to prevent possible leakage.

**Charge the parent unit battery**

Once you have connected the parent unit and installed its battery, press **⏻** to turn it on. The battery icon indicates the battery status (see the following table).

- NOTES**
- The parent unit battery is fully charged after 11 hours of continuous charging.
  - It takes longer to charge the battery when the parent unit is turned on. To shorten the charging time, turn the parent unit off while charging.
  - The standby time varies depending on the sensitivity level you set, your actual use and the age of the battery.

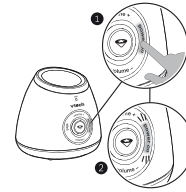
Battery indicators	Battery status	Action
The battery icon is off.	No battery is installed. The parent unit can be used only when it is connected to AC power.	Install the parent unit battery. Charge without interruption (at least 30 minutes).
<b>LOW BATTERY</b> icon	The battery has very little charge and may be used for only a short time.	Charge without interruption (about 30 minutes).
The battery icon becomes solid <b>100%</b> .	The battery is fully charged.	To keep the battery charged, connect it to AC power when not in use.

**Before use**

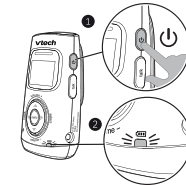
You may test the baby monitor before initial use, and at regular times thereafter.

**To test your audio monitor:**

- Place the parent unit and the baby units in the same room to test the product. Make sure the baby unit is at least 3 feet away from the parent unit.
- Press **power on** to turn on the baby unit. The **power on** lights up.



- Press **⏻** to turn on the parent unit. The screen turns on.



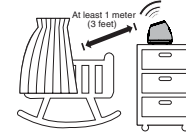
**NOTE**  
 If both units are not connected, the parent unit displays **NOT LINKED** and **T** flashes.

**Positioning the baby monitor**

This baby monitor is intended as an aid. It is not a substitute for proper adult supervision, and should not be used as such.

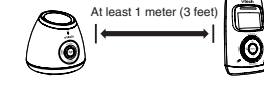
**CAUTION**  
 Keep the baby unit out of the reach of the baby. Never place or mount the baby unit inside the baby's crib or playpen.

- Place the baby unit at least 1 meter / 3 feet away from your baby.



**NOTE**  
 If you experience audio feedback on either the parent unit or baby unit, move the parent unit further away until there is no more audio feedback; or press **volume -** on the parent unit to lower the audio feedback sound.

- Place the parent unit at least 1 meter / 3 feet away from the baby unit.



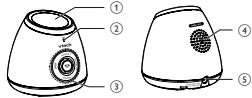
**TIP**  
 You can increase the speaker volume of the parent unit if you cannot hear the sounds transmitted from the baby unit.

**Operating range**

The operating range of the baby monitor is up to 300 meters (1,000 feet) outdoors or 50 meters (160 feet) indoors. The actual operating range may vary depending on the environmental conditions, and other interferences such as walls, doors, and other obstructions.

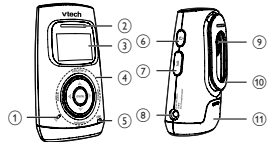
**Overview**

**Baby unit overview**



1	<b>Projector</b> <ul style="list-style-type: none"> <li>When it is on, it projects some image patterns to the user environment.</li> </ul>
2	<b>Microphone</b>
3	<b>Control key panel</b> <b>power on</b> <ul style="list-style-type: none"> <li>Press to power on.</li> <li>Press and hold to power off.</li> </ul> <ul style="list-style-type: none"> <li>Flashes when the baby unit is not linked to a parent unit; or the pairing process is in progress.</li> </ul> <b>page</b> <ul style="list-style-type: none"> <li>Press to start or stop paging parent unit.</li> </ul> <b>volume +</b> <ul style="list-style-type: none"> <li>Press to increase the listening volume.</li> </ul> <b>volume -</b> <ul style="list-style-type: none"> <li>Press to decrease the listening volume.</li> </ul> <ul style="list-style-type: none"> <li>Press to turn on or off the projector.</li> </ul>
4	<b>Speaker</b>
5	<b>Power jack</b>

**Parent unit overview**



1	<b>Microphone</b>
2	<b>Visual sound indicator</b>  The visual sound indicator has two functions. One is to show the sound level detected by the baby unit. The other one is to show the volume level during speaker volume setting. <b>Sound level detected by the baby unit</b> <ul style="list-style-type: none"> <li>One to three green lights indicate a moderate sound level detected by the baby unit.</li> <li>Additional red lights indicate a higher sound level detected by the baby unit (e.g. baby crying loudly).</li> </ul> <b>Speaker volume level</b> <ul style="list-style-type: none"> <li>One to three green lights indicate Level 1 to Level 3 of the speaker volume setting.</li> <li>Additional red lights indicate Level 4 to Level 5 of the speaker volume setting.</li> </ul>
3	<b>LCD panel</b>

4	<b>Control key panel menu</b> <ul style="list-style-type: none"> <li>Press to enter the menu while idle.</li> </ul> <b>select</b> <ul style="list-style-type: none"> <li>While in a menu, press to choose an item, or save a setting.</li> </ul> <b>back</b> <ul style="list-style-type: none"> <li>While in a menu, press to return to the previous menu.</li> <li>Press to return idle while current menu is already in root level.</li> </ul> <b>volume +</b> <ul style="list-style-type: none"> <li>Press to increase the speaker volume.</li> </ul> <ul style="list-style-type: none"> <li>While in a menu, press to scroll up.</li> </ul> <b>volume -</b> <ul style="list-style-type: none"> <li>Press to decrease the speaker volume.</li> </ul> <ul style="list-style-type: none"> <li>While in a menu, press to scroll down.</li> </ul>
5	<b>Battery level indicator</b> <ul style="list-style-type: none"> <li>Light on when the parent unit battery is being charged.</li> <li>Light flashes when the parent unit battery is low and needs charging.</li> <li>Light off when the parent unit battery is fully charged, or when no battery is installed.</li> </ul>
6	<b>⏻(On/off)</b> <ul style="list-style-type: none"> <li>Press to power on.</li> <li>Press and hold to power off.</li> <li>Press to turn on or off the screen.</li> </ul>
7	<b>talk</b> <ul style="list-style-type: none"> <li>Press and hold to talk to the selected baby unit; release to stop talking.</li> <li>Additional red lights indicate Level 4 to Level 5 of the speaker volume setting.</li> </ul>
8	<b>Power jack</b>
9	<b>Speaker</b>
10	<b>Belt clip</b>
11	<b>Battery compartment cover</b>

**Parent unit display icons**

	<b>Connection status</b> <ul style="list-style-type: none"> <li>T displays when strong signal strength is detected between the baby unit and the parent unit.</li> <li>T displays when moderate signal strength is detected between the baby unit and the parent unit.</li> <li>T displays when the weak link signal strength is detected between the baby unit and the parent unit.</li> <li>T displays when the link between the baby unit and the parent unit is lost.</li> </ul>
	<b>Projector</b> <ul style="list-style-type: none"> <li>Displays when the projector of the baby unit is on.</li> </ul>
	<b>Sound alert</b> <ul style="list-style-type: none"> <li>Displays when the sound alert of the parent unit is turned on.</li> <li>Flashes when there are sounds detected from the baby unit at which the speaker volume is turned off.</li> </ul>
	<b>Vibration alert</b> <ul style="list-style-type: none"> <li>Displays when the vibration alert of the parent unit is turned on.</li> </ul>
	<b>Mute</b> <ul style="list-style-type: none"> <li>Displays when the volume is turned off.</li> </ul>
	<b>Battery status</b> <ul style="list-style-type: none"> <li>animates when the battery is charging.</li> <li>displays solid when the battery is fully charged.</li> <li>flashes when the battery fails to charge.</li> <li>displays when battery is in low level and needs charging.</li> <li>No battery icon displays when there is no battery installed.</li> </ul>

**Parent unit display screen messages**

LINKED	When the link between the parent unit and the baby unit is established.
LOW BATTERY	The parent unit uses only the rechargeable battery pack and it needs to be recharged.
NOT LINKED	When the link between the parent unit and the baby unit is lost continuously for over 10 seconds.
PAGING	All idle parent units are being paged by the baby unit.
SAVED	Your selection has been saved.
SEARCHING	The parent unit is out of range of the baby unit, or the baby unit is out of power.
TALK	The parent unit is talking to the baby unit.
TALKBACK	The other parent unit is talking to the baby unit.

**Using the baby monitor**

**Power on or off the baby unit**

- Press **power on** to turn on the baby unit. The **power on** lights up.
- Press and hold **power on** again to power off the baby unit. The **power on** turns off.

**Power on or off the parent unit**

- Press **⏻** to power on the parent unit. The screen turns on.
- Press and hold **⏻** again to power off the parent unit. The screen turns off.

**Adjust the speaker volume for baby unit**

- Press **volume +** or **volume -** on the baby unit at any time.

**Adjust the speaker volume for parent unit**

- You can adjust the speaker volume from **VOLUME 1** to **VOLUME 5**, or turn it off. The speaker volume is preset to **VOLUME 3**.
- Press **volume +** or **volume -** on the parent unit while viewing image from baby unit.

When the speaker volume is set to off, the screen displays **⏻**.

**Adjust the sound sensitivity of the baby unit**

- You can use the parent unit to change the sound sensitivity level of the baby unit from **LEVEL 1** to **LEVEL 5**. The higher the sound sensitivity level is set, the more sensitive the baby unit is in detecting sounds for transmitting to the parent units. The sensitivity level is preset to **LEVEL 5**.
- If you want the baby unit to be very sensitive in detecting sounds, you may set the sensitivity level to the highest level (**LEVEL 5**), so that the baby unit will always detect any sounds including background noises for transmitting to the parent units. If you want the baby unit to be less sensitive in detecting sounds, you may set the sensitivity level to a lower level (**LEVEL 1** to **LEVEL 4**), so that the baby unit will transmit sounds to the parent units only when your baby is very noisy or crying loudly.

- Press **menu** when the parent unit is not in use.
- Press **select**.
- Press **volume +** or **volume -** to choose the sensitivity level.

**Power on or off the baby unit**

**TIP**  
 To enter the sensitivity menu of the parent unit, the baby unit must be turned on.

**Sound alert**

You may turn on the sound alert while the speaker volume is turned off so that the parent unit beeps as soon as the baby unit detects sounds which light up four sound level indicators on the parent unit.

- When the sound alert of the parent unit is turned on, **⏻** displays. The sound alert is preset to **OFF**.
- Press **menu** when the parent unit is not in use.
  - Press **volume +** or **volume -** to choose **SOUND ALERT**, then press **select**.
  - Press **volume +** or **volume -** to choose **ON** or **OFF**.

- Press **select** to confirm your selection. The screen displays **SAVED** and you hear a confirmation tone.

**NOTE**  
 The sound alert setting on each parent unit is independent.

**Vibration alert**

You may turn on the vibration alert so that the parent unit vibrates as soon as the baby unit detects sounds which light up four sound level indicators on the parent unit.

When the vibration alert of the parent unit is turned on, **⏻** displays. The vibration alert is preset to **OFF**.

- Press **menu** when the parent unit is not in use.
- Press **volume +** or **volume -** to choose **VIBE ALERT**, then press **select**.
- Press **volume +** or **volume -** to choose **ON** or **OFF**.
- Press **select** to confirm your selection. The screen displays **SAVED** and you hear a confirmation tone.

**NOTES**

- Each time you set the vibration alert to **ON**, the parent unit vibrates briefly after you press **select**.
- The vibration alert setting on each parent unit is independent.

**Projector**

You can turn on the projector on the baby unit to form some interesting and colour images. You can also use the parent unit to set the projector on the baby unit to automatically turn on whenever sounds are detected from the baby unit.

When the projector is turned on, **T** displays. The default setting is preset to **NO**.

- Press **menu** when the parent unit is not in use.
- Press **volume +** or **volume -** to choose **Projector**, then press **select**.
- Press **select** again.
- Press **volume +** or **volume -** to choose **ON** or **OFF**.
- Press **select** to confirm your selection. The screen displays **SAVED** and you hear a confirmation tone.

**Language**

You can select a language (English, French or Spanish) to be used in all screen displays. The language is preset to **English**.

- Press **menu** when the parent unit is not in use.
- Press **volume +** or **volume -** to choose **Language (LANGUE** if French is set, or **IDIOMA** if Spanish is set), then press **select**.
- Press **volume +** or **volume -** to choose **ENGLISH, FRANCAIS** or **ESPAÑOL**.
- Press **select** to confirm your selection. The screen display **SAVED** and you hear a confirmation tone.

**NOTE**  
 The language setting on each parent unit is independent.

**Set default**

Use this feature to restore to the default settings. Restoring the default settings on one parent unit will also reset the shared settings for sensitivity and projector of the other parent unit.

- Press **menu** when the parent unit is not in use.
- Press **volume +** or **volume -** to choose **SET DEFAULT**, then press **select**.
- Press **volume +** or **volume -** to choose **YES** or **NO**.
- When you choose **YES**, press **select** to confirm your selection. You hear a confirmation tone and then the screen displays **LINKED**.

**-OR-**

When you choose **NO**, press **select** to confirm your selection. The screen displays the previous menu.

**NOTE**  
 When you reset the default settings, any units that are turned off or out of range will not be reset.

**Talk to the baby unit**

You can broadcast messages from a parent unit to the baby unit and the other parent unit. If you have two parent units, you can use both of them at the same time to talk to the baby unit.

- Press and hold **talk** on the side of the parent unit. The screen displays **TALK** when the voice connection to the baby unit is made. Speak towards the mic on the parent unit. Your voice is broadcast to the baby unit and the other parent unit.

**NOTE**  
 When a parent unit is talking to the baby unit, it is also broadcast to the other parent unit. However, any sounds from the baby unit cannot be transmitted to the parent units at the same time.

**Find/page the parent unit**

Use this feature to find misplaced parent units.

- Press **page** on the baby unit. All idle parent units ring and display **PAGING**.
- To end paging, press any key on the parent unit, or press **PAGE** on the baby unit.

**NOTES**

- Paging rings all parent units even if the speaker volume of parent unit is set to **VOLUME OFF**.
- The baby unit cannot page any parent unit that is turned off, out of range or talking to the baby unit.

## General product care

To keep this product working well and looking good, follow these guidelines:

- Avoid putting it near heating appliances and devices that generate electrical noise (for example, motors or fluorescent lamps).
- DO NOT expose it to direct sunlight or moisture.
- Avoid dropping the product or treating it roughly.
- Clean with a soft cloth.
- DO NOT immerse the parent unit and the baby unit in water and do not clean them under the tap.
- DO NOT use cleaning spray or liquid cleaners.
- Make sure the baby unit and parent unit are dry before you connect them to the mains again.

## Storage

When you are not going to use the baby monitor for some time, remove the rechargeable battery from the parent unit. Store the parent unit, the baby unit and the adapters in a cool and dry place.

## Frequently asked questions

Below are the questions most frequently asked about the baby monitor. If you cannot find the answer to your question, visit our website at [www.vtechphones.com](http://www.vtechphones.com) or call 1 (800) 595-9511 for customer service.

Why does the baby monitor not respond normally?	Try the following (in the order listed) for common causes: <ol style="list-style-type: none"> <li>1. Disconnect the power to the baby unit and the parent units.</li> <li>2. Remove the batteries in the parent units. Then, install the batteries again.</li> <li>3. Wait a few minutes before connecting power back to the baby units and the parent units.</li> <li>4. Turn on the baby unit and the parent units.</li> <li>5. Wait for the parent units to synchronize with the baby unit. Allow up to one minute for this to take place.</li> </ol>
Why doesn't the screen of the parent unit go on when I switch on the unit?	Perhaps the rechargeable battery of the parent unit is empty and the parent unit is not connected to the mains. Insert the appliance plug into the parent unit and put the adapter in a wall socket. Then, press <b>⏻</b> to switch on the parent unit and to establish connection with the baby unit.
Why doesn't the power on light of the baby unit go on when I switch on the unit?	Perhaps the baby unit is not connected to the mains. Connect the baby unit to the mains. Then, press <b>power</b> on to turn on the baby unit and to establish connection with the parent unit.
Why does the baby monitor produce a high-pitched noise?	The units may be too close to each other. Make sure the parent unit and the baby unit at least 1 meter/3 feet away from each other.
Why does the parent unit react too quickly to other sounds?	The baby unit also detects other sounds than those of your baby. Adjust the sensitivity level to a lower level or adjust the speaker volume on the parent unit.

Why don't I hear a sound/ Why can't I hear my baby cry?  
The volume of the parent unit may have set too low. Press **volume +** to increase the volume level.

You may have set a low sound sensitivity level. See **Adjust the sound sensitivity of the baby unit** to change the setting.

Why does the parent unit beep?  
The baby units may be out of range. Move the parent unit closer to the baby units (but not less than 3 feet).

If the parent unit is powered by the provided battery, it may not have enough charge for the parent unit to perform normally. Charge the battery in the parent unit for up to 11 hours.

Why can't I establish a connection?  
Why is the connection lost every now and then? Why are there sound interruptions?  
Other electronic products may cause interference with your baby monitor. Try installing your baby cordless phone away from these electronic devices as possible.

## Important safety instructions

When using your equipment, basic safety precautions should always be followed to reduce the risk of fire, electric shock and injury, including the following:

1. Follow all warnings and instructions marked on the product.
2. Adult setup is required.
3. This product is intended as an aid. It is not a substitute for responsible and proper adult supervision and should not be used as such.
4. This product is not intended for use as a medical monitor.
5. Do not use this product near water. For example, do not use it next to a bath tub, wash bowl, kitchen sink or swimming pool, or in a wet basement or shower.
6. **CAUTION:** Only use the batteries indicated in this manual. There may be a risk of explosion if a wrong type of battery is used for the parent unit. Use only the supplied rechargeable battery or replacement battery pack (BT166342/BT266342) for the parent unit. Do not dispose of batteries in a fire. They may explode. Dispose of used battery according to the information in **The RBRC® seal**.
7. Use only the adapters included with this product. Incorrect adapter polarity or voltage can seriously damage the product.  
Baby unit power adapter: Input 100-120V AC 150mA 60Hz; Output: 6V DC 600mA; Parent unit power adapter: Input 100-120V AC 150mA 60Hz; Output: 6V DC 400mA.
8. The power adapters are intended to be correctly oriented in a vertical or floor mount position. The prongs are not designed to hold the plug in place if it is plugged into a ceiling, under-the-table or cabinet outlet.
9. For pluggable equipment, the socket-outlet shall be installed near the equipment and shall be easily accessible.
10. Unplug this product from the wall outlet before cleaning. Do not use liquid or aerosol cleaners. Use a damp cloth for cleaning.
11. Unplug the power cords before replacing batteries.
12. Do not cut off the power adapters to replace them with other plugs, as this causes a hazardous situation.
13. Do not allow anything to rest on the power cords. Do not install this product where the cords may be walked on or crimped.

14. This product should be operated only on the type of power source indicated on the marking label. If you are not sure of the type of power supply in your home, consult your dealer or local power company.

15. Do not overload wall outlets or use an extension cord.

16. Do not place this product on an unstable table, shelf, stand or other unstable surfaces.

17. This product should not be placed in any area where proper ventilation is not provided. Slots and openings in the back or bottom of this product are provided for ventilation. To protect them from overheating, these openings must not be blocked by placing the product on a soft surface such as a bed, sofa or rug. This product should never be placed near or over a radiator or heat register.

18. Never push objects of any kind into this product through the slots because they may reach dangerous voltage points or create a short circuit. Never spill liquid of any kind on the product.

19. To reduce the risk of electric shock, do not disassemble this product, but take it to an authorized service facility. Opening or removing parts of the product other than specified accessories may expose you to dangerous voltages or other risks. Incorrect reassembling can cause electric shock when the product is subsequently used.

20. You should test the sound reception every time you turn on the units or move one of the components.

21. Periodically examine all components for damage.

22. Be aware of possible loss of privacy while using public airwaves. Conversations may be picked up by other nursery monitors, cordless phones, scanners, etc.

23. Children should be supervised to ensure that they do not play with the product.

24. The product is not intended for use by persons (including children) with reduced physical, sensory, mental capabilities, or lack of experience and knowledge, unless they have been given supervision or instruction concerning use of the appliance by a person responsible for their safety.

### SAVE THESE INSTRUCTIONS

## Limited warranty

### What does this limited warranty cover?

The manufacturer of this VTech Product warrants to the holder of a valid proof of purchase ("Consumer" or "you") that the Product and all accessories provided in the sales package ("Product") are free from defects in material and workmanship, pursuant to the following terms and conditions, when installed and used normally and in accordance with the Product operating instructions. This limited warranty extends only to the Consumer for Products purchased and used in the United States of America and Canada.

### What will VTech do if the Product is not free from defects in materials and workmanship during the limited warranty period ("Materially Defective Product")?

During the limited warranty period, VTech's authorized service representative will repair or replace at VTech's option, without charge, a Materially Defective Product. If we repair the Product, we may use new or refurbished Product components. If we choose to replace the Product, we may replace it with a new or refurbished Product of the same or similar design. We will not repair defective parts, modules, or equipment. Repair or replacement of the Product, at VTech's option, is your exclusive remedy. VTech will return the repaired or replacement Products to you in working condition. You should expect the repair or replacement to take approximately 30 days.

### How long is the limited warranty period?

The limited warranty period for the Product extends for ONE (1) YEAR from the date of purchase. If VTech repairs or replaces a Materially Defective Product under the terms of this limited warranty, this limited warranty also applies to the repaired or replacement Product for a period of either (a) 90 days from the date the repaired or replacement Product is shipped to you or (b) the time remaining on the original one-year warranty, whichever is longer.

### What is not covered by this limited warranty?

- This limited warranty does not cover:
1. Product that has been subjected to misuse, accident, shipping or other physical damage, improper installation, abnormal operation or handling, neglect, inundation, fire, water or other liquid intrusion; or
  2. Product that has been damaged due to repair, alteration or modification by anyone other than an authorized service representative of VTech; or
  3. Product to the extent that the problem experienced is caused by signal conditions, network reliability, or cable or antenna systems; or
  4. Product to the extent that the problem is caused by use with non-VTech accessories; or
  5. Product whose warranty/quality stickers, product

## Precautions

1. Use and store the product at a temperature between 32°F and 104°F.
2. Do not expose the product to extreme cold, heat or direct sunlight. Do not put the product directly on a heating surface.
3. Batteries should not be exposed to excessive heat such as bright sunshine or fire.
4. Make sure the baby unit(s) and the adapter cord(s) are always out of reach of the baby, at least 3 feet away from the baby or crib, to avoid a possible strangulation hazard.
5. Never place the baby unit(s) inside the baby's crib or cradle. Never cover the baby unit(s) or parent unit with anything such as a towel or blanket.
6. Other electronic products may cause interference with your baby monitor. Try installing your baby monitor as far away from these electronic devices as possible: wireless routers, radios, cellular telephones, intercoms, room monitors, televisions, personal computers, kitchen appliances and cordless telephones.

### Precautions for users of implanted cardiac pacemakers

Cardiac pacemakers (applied only to digital cordless devices):  
Wireless Technology Research, LLC (WTR), an independent research entity, led a multidisciplinary evaluation of the interference between portable wireless devices and implanted cardiac pacemakers. Supported by the U.S. Food and Drug Administration, WTR recommends to physicians that:

- **Pacemaker patients**
  - Should keep wireless devices at least six inches from the pacemaker.
  - Should NOT place wireless devices directly over the pacemaker, such as in a breast pocket, when it is turned ON.

WTR's evaluation did not identify any risk to bystanders with pacemakers from other persons using wireless devices.

### Electromagnetic fields (EMF)

This VTech product complies with all standards regarding electromagnetic fields (EMF). If handled properly and according to the instructions in this user's manual, the product is safe to be used based on scientific evidence available today.

## The RBRC® seal

The RBRC® seal on the nickel-metal battery indicates that VTech Communications, Inc. is voluntarily participating in an industry program to collect and recycle these batteries at the end of their useful lives, when taken out of service within the United States and Canada.

The RBRC® program provides a convenient alternative to placing used nickel-metal batteries into the trash or municipal waste, which may be illegal in your area.

VTech's participation in RBRC® makes it easy for you to recycle these batteries at most retail outlets in the RBRC® program or at authorized VTech product service centers. Please call 1 (800) 8 BATTERY\* for information on Ni-MH battery recycling and disposal bans/restrictions in your area. VTech's involvement in this program is part of its commitment to protecting our environment and conserving natural resources.

**RBRC® and 1 (800) 8 BATTERY\* are registered trademarks of Rechargeable Battery Recycling Corporation.**



## FCC and IC regulations

### FCC Part 15

This equipment has been tested and found to comply with the requirements for a Class B digital device under Part 15 of the Federal Communications Commission (FCC) rules. These requirements are intended to provide reasonable protection against harmful interference in a residential installation. This equipment generates, uses and can radiate radio frequency energy and, if not installed and used in accordance with the instructions, may cause harmful interference to radio communications. However, there is no guarantee that interference will not occur in a particular installation. If this equipment does cause harmful interference to radio or television reception, which can be determined by turning the equipment off and on, the user is encouraged to try to correct the interference by one or more of the following measures:

- Reorient or relocate the receiving antenna.
- Increase the separation between the equipment and receiver.
- Connect the equipment into an outlet on a circuit different from that to which the receiver is connected.
- Consult the dealer or an experienced radio/TV technician for help.

should not rely on any such modification.

State/Provincial Law Rights: This warranty gives you specific legal rights, and you may also have other rights, which vary from state to state or province to province.

Limitations: Implied warranties, including those of fitness for a particular purpose and merchantability (an unwritten warranty that the Product is fit for ordinary use) are limited to one year from the date of purchase. Some states/provinces do not allow limitations on how long an implied warranty lasts, so the above limitation may not apply to you. In no event shall VTech be liable for any indirect, special, incidental, consequential, or similar damages (including, but not limited to lost profits or revenue, inability to use the Product or other associated equipment, the cost of substitute equipment and claims by third parties) resulting from the use of this Product. Some states/provinces do not allow the exclusion or limitation of incidental or consequential damages, so the above limitation or exclusion may not apply to you.

**Please return your original sales receipt as proof of purchase.**

Changes or modifications to this equipment not expressly approved by the party responsible for compliance could void the user's authority to operate the equipment.

This device complies with Part 15 of the FCC rules. Operation is subject to the following two conditions: (1) this device may not cause harmful interference, and (2) this device must accept any interference received, including interference that may cause undesired operation.

To ensure safety of users, the FCC has established criteria for the amount of radio frequency energy that can be safely absorbed by a user or bystander according to the intended usage of the product. This product has been tested and found to comply with the FCC criteria. The baby unit shall be installed and used such that parts of all persons' body are maintained at a distance of approximately 8 in (20 cm) or 1 (800) 8 BATTERY\*.

The transmitter and antenna of the parent unit shall be held at least 1 in (2.5 cm) from your face. This Class B digital apparatus complies with Canadian requirements:

CAN ICES-3 (B)/NMB-3 (B)

### Industry Canada

This device complies with Industry Canada license-exempt RSS standard(s).

Operation is subject to the following two conditions: (1) this device may not cause harmful interference, and (2) this device must accept any interference, including interference that may cause undesired operation. The term "IC" before the certification/registration number only signifies that the Industry Canada technical specifications were met.

This product meets the applicable Industry Canada technical specifications.

### RF radiation exposure statement

The baby unit complies with FCC RF radiation exposure limits set forth for an uncontrolled environment. The baby unit should be installed and operated with a minimum distance of 8 in (20 cm) between the baby unit and all persons' body. Use of other accessories may not ensure compliance with FCC RF exposure guidelines. This transmitter must not be co-located or operating in conjunction with any other antenna or transmitter. This equipment complies also with Industry Canada RSS-102 with respect to Canada's Health Code 6 for Exposure of Humans to RF Fields.

## Technical specifications

Frequency control	Crystal controlled PLL synthesizer
Transmit frequency	Baby unit: 1921.536-1928.448 MHz Parent unit: 1921.536-1928.448 MHz
Channels	5
LCD	35 (x) x 21.2 (y) mm B&W LCD
Nominal effective range	Maximum power allowed by FCC and IC. Actual operating range may vary according to environmental conditions at the time of use.
Power requirement	Parent unit: 2.4 V Ni-MH battery Baby unit power adapter: Input: 100-120V AC 150mA 60Hz Output: 6V DC 600mA Parent unit power adapter: Input: 100-120V AC 150mA 60Hz Output: 6V DC 400mA

## California Energy Commission battery charging mode

This baby monitor meets the California Energy Commission (CEC) regulations for energy consumption. Your baby monitor is set up to comply with the energy-conserving standards right out of the box.

Follow the instructions to install and charge the battery. The CEC battery charging testing mode is activated while charging.

Even if the parent unit is paired to baby units, the CEC battery charging testing mode is activated while it is powered off and charging.

## For cETL compliance only

### Mesures de sécurité importantes

Lorsque vous utilisez votre appareil, vous devriez toujours suivre certaines mesures de précaution de base afin de réduire les risques d'incendie, d'électrocution, et de blessures corporelles, dont ceux qui suivent:

1. Observez toutes les instructions et mises en garde inscrites sur l'appareil.
2. L'installation par un adulte est requise.
3. Ce produit a été conçu pour être un dispositif d'appoint seulement. Il n'est pas le remplacement d'une supervision responsable et adéquate par un adulte et ne devrait pas être utilisé comme telle.
4. Ce produit n'est pas conçu pour être utilisé en tant que moniteur médical.
5. N'utilisez pas cet appareil près de l'eau ni de toute autre source d'humidité, par exemple, près d'une baignoire, cuve à lessive, évier de cuisine, dans un sous-sol humide ni près d'une piscine, dans un sous-sol humide ou une douche.
6. **MISE EN GARDE:** Il peut y avoir un risque d'explosion si vous utilisez le mauvais type de piles pour l'unité du parent. N'utilisez que le bloc-piles rechargeable inclus ou le bloc-piles de rechange (BT166342/BT266342). N'incinerez pas les piles. Elles-ci risquent d'exploser. Jetez les piles usées selon les renseignements suivant le **sceau du RBRC®**.
7. N'utilisez que les adaptateurs inclus avec ce produit. L'utilisation d'un adaptateur dont la polarité ou la tension serait inadéquate risque d'endommager sérieusement le produit et mettre votre sécurité en péril.  
Adaptateur de l'unité du bébé: Entrée 100-120V CA 150 mA 60 Hz; Sortie: 6 V CC 400 mA.  
Adaptateur de l'unité du parent: Entrée 100-120V CA 150 mA 60 Hz; Sortie: 6 V CC 400 mA.

### Stimulateurs cardiaques implantés dans l'organisme

Les stimulateurs cardiaques (ne s'applique qu'aux dispositifs numériques sans fil):

L'organisme Wireless Technology Research, LLC (WTR), une firme de recherche indépendante, a mené une évaluation pluridisciplinaire des interférences entre les téléphones sans fil portatifs et les stimulateurs cardiaques implantés dans l'organisme. Appuyée par l'Administration des aliments et drogues (FDA) des États-Unis, la firme WTR recommande aux médecins:

### Avis aux détenteurs de stimulateurs cardiaques

- Vous devriez maintenir les dispositifs sans fil à au moins six pouces du stimulateur cardiaque.
- Ils ne doivent PAS placer le téléphone sans fil directement sur le stimulateur cardiaque, tel que dans une poche de chemise, lorsque celui-ci est en marche.

L'identité effectuée par l'organisme WRS n'a pas été établie de risque pour les détenteurs de stimulateurs cardiaques causés par les gens qui utilisent dispositifs sans fil à proximité de ceux-ci.

### Champs électromagnétiques (EMF)

Ce produit de VTech est conforme à toutes les normes se rapportant aux champs électromagnétiques (EMF) standard. Si vous le manipulez correctement en suivant les instructions de ce guide, son utilisation sera sécuritaire pendant de nombreuses années, selon les meilleures évidences scientifiques dont nous disposons aujourd'hui.

### CONSERVEZ CES INSTRUCTIONS

#### Mises en garde

1. Utilisez et entreposez le produit à une température entre 0° C (32°F) et 40° C (104° F).
2. N'exposez pas cet appareil à des froids ou des chaleurs extrêmes, ainsi qu'à la lumière directe du soleil. Ne l'installez pas près d'une source de chauffage.
3. Le bloc-piles ne doit pas être exposé à la chaleur excessive telle que la lumière du soleil ou au feu, l'appareil. Pour l'empêcher de surchauffer, ne bloquez sous aucun prétexte ces ouvertures et n'empêchez pas l'aération adéquate de l'appareil en le plaçant sur un lit, divan, tapis ou toute autre surface similaire. De même, ne le positionnez pas à proximité ni au-dessus d'une source de chaleur ou d'un calorifère. De plus, ne placez pas l'appareil dans un endroit avant de vous assurer qu'il y ait une bonne circulation d'air.
4. N'entourez jamais d'objets à travers les ouvertures de cet appareil, car ils pourraient entrer en contact avec des points de tension dangereux ou causer des courts-circuits qui peuvent dégénérer en incendies ou en risques d'électrocution. Ne renversez jamais de liquide dans ce produit.
5. Afin de réduire les risques d'électrocution, ne démontez pas cet appareil, même s'il est allumé dans un centre de service autorisé. L'ouverture du boîtier ou le retrait de toutes pièces qui contient



Specifications are subject to change without notice.  
© 2015 VTech Communications, Inc.  
All rights reserved. 03/15, DM202\_CIB\_V1.0  
Document order number: 91-008460-010-000

