

User's Manual

<SPIO 182 / SPIO 185 – USB 2.0>



* Product Introduction

- Super slim & light mobile storage device using 1.8" HDD
- Supporting USB2.0 with lightning speed
- Blue LED for operation indicator
- No external power required
- Plug & Play and Hot Plugging
- Scheduling auto back-up software
- Aluminum for heat management & deluxe case

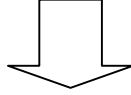
* Caution

- **New hard disk requires FDISK and Formatting.** Mobile HDD can't be detected in the computer without this process.
- Do not drop or aggressively handle the Mobile HDD. It may cause damage to the hard disk.
- Avoid exposing the Mobile HDD to the magnetic like a speaker and humidity. It may cause damage to the hard disk..
- Do not remove or disconnect the Mobile HDD from PC while the Mobile HDD is transferring the data. It may cause damage to hard disk.

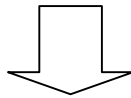
< **Manufacturer is not responsible for the data loss resulted from ignoring above notes**>

< Please refer to the Installation Procedure >

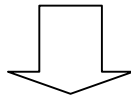
Disassembly of the cover



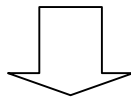
Assembly of HDD



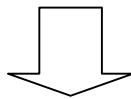
Assembly of the cover



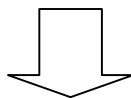
Cable connection and switching (page 5)



Driver Installation (page 6)



Partition and format (page 7)



Ready to use (page 8)

< Contents >

- **Feature and caution**

1. Name of each part and Contents

2. Products Specification

3. System Requirements

4. Cable connection and switching

5. Driver installation

6. Partition and format

7. Ready to use

8. How to use HardCopy (Auto backup software) ?

9. Trouble Shooting

10. Warranty

1. Name of parts and contents

USB 2.0

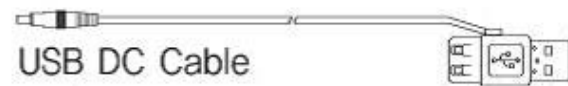
Name of parts



Contents



USB Main Cable



USB DC Cable



CD



Bag



Manual



Screw

Contents of parts may be changed for improvement
without pre-notice

2. Specification

Interface		USB 2.0
Model		SPIO 182 / SPIO 185
Transfer Rate		480Mbps
Hard Disk		1.8 INCH, 5mm/8mm IDE Hard Disk
Dimension		103mm x 61mm x 17mm (D x W x H)
Weight		120g (HDD included)
Power Source		Bus Power
OS	Windows	98 / 98SE / ME / 2000 / XP
	Mac	OS 8.6 higher

3. System Environment

[Windows PC]

- USB 2.0 / 1.1
 - System : Pentium or higher IBM compatible PC or Mac
 - Memory : Over 32MB
 - OS : Windows 98 / ME / 2000 / XP, Mac OS 8.6 & higher
 - Interface : USB2.0 / 1.1 port
(For USB2.0 support, USB2.0 based main board or USB 2.0 PCI card, or PCMCIA cards are required)
 - CD Drive for driver installation or internet connection for download of installation driver

[Macintosh]

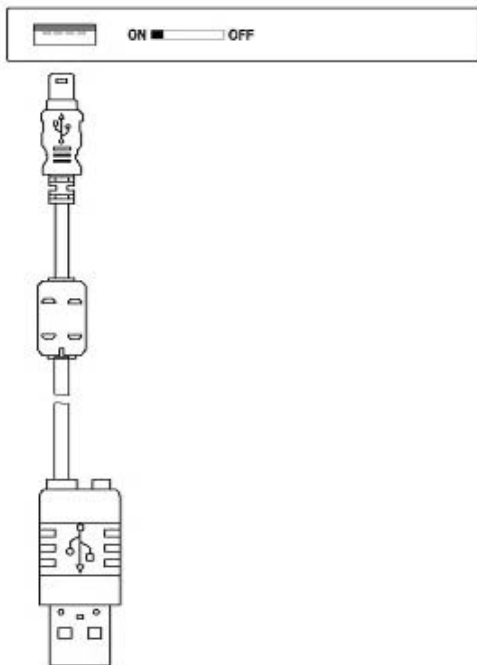
- USB 2.0/1.1
 - System : PC that has USB port
 - Memory : Over 32MB
 - OS : Mac OS 8.6 & higher
 - CD Drive for driver installation or internet connection for download of installation driver

4. Cable connection and switching

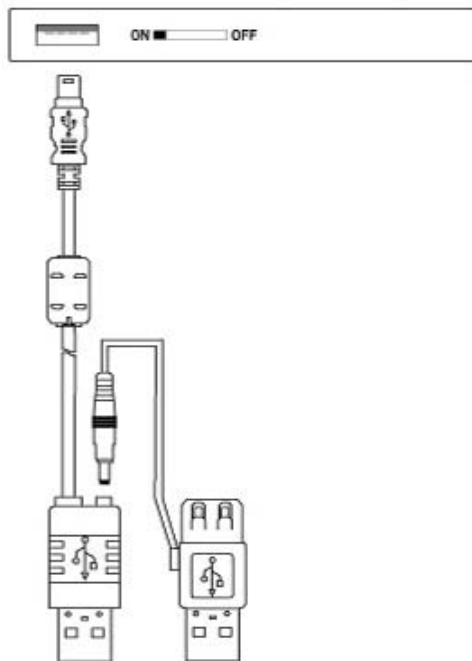
(USB2.0)

● USB

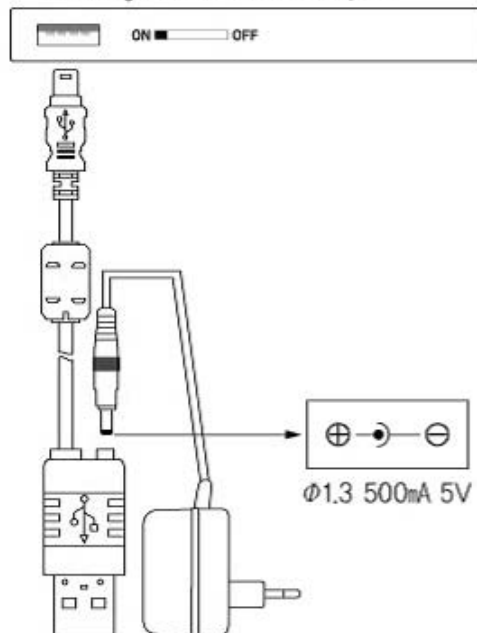
(1) USB Cable connection



(2) When the power is not enough from one USB port, use USB DC cable.



(3) When the power is not enough despite of following above. use DC adapter.



5. Driver installation

Driver installation for Windows 98 User

- Before connecting the Mobile HDD to your computer, double click the file “USB-IDE98_v1016B.exe”, and
- install the driver at your computer.
- Follow the installation process in Figure 1~3

Figure 1. After double click “USB-IDE98_v1016B.exe”, InstallShield Wizard will start.

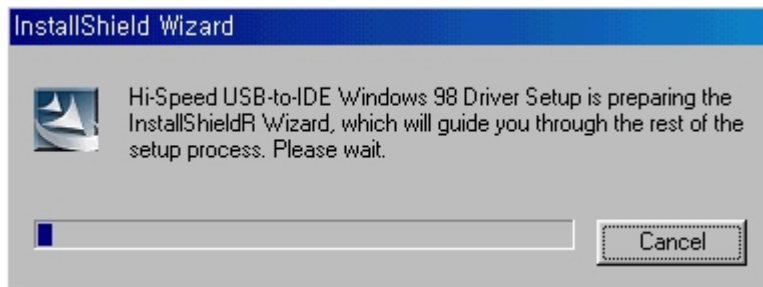


Figure 2. Click “Next”

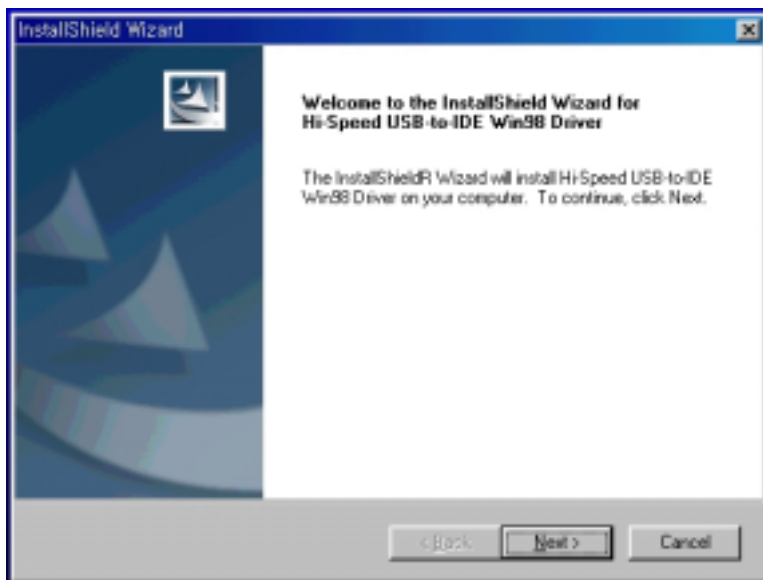
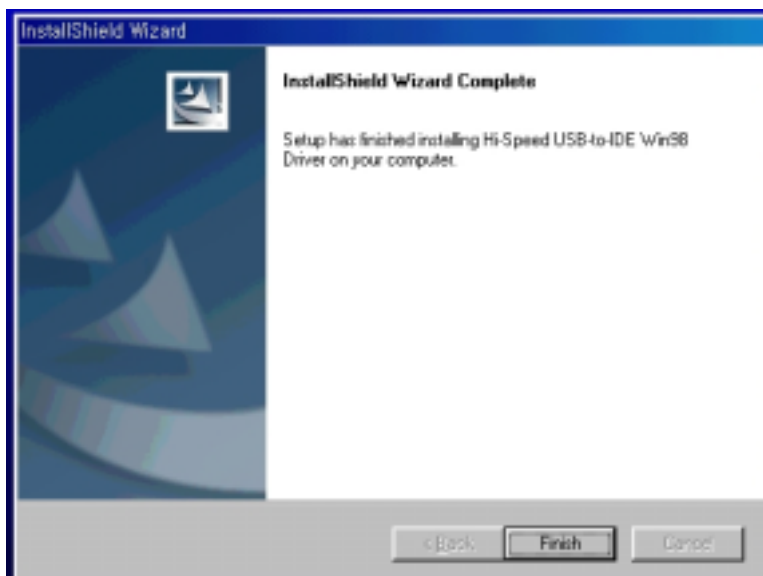


Figure 3. Click “Finish”



<Driver Installation under Windows ME / 2000 / XP >

Mobile HDD is automatically detected without driver installation under Windows ME, 2000, XP..

6. Partition and Format

* Caution : The driver should be Installed before partition and Format.

To partition new hard disk, run the **fdisk** command.

1) Fdisk and format of new hard disk at windows 98 / ME

- a. Install the driver after connecting the product to computer (Driver is installed automatically under Windows ME)
- b. After driver installation, select and click **start -> program -> MS DOS**
- c. Type **fdisk** at command prompt and press **Enter** key
- d. You receive following message "**Do you wish to enable large disk support ?**".
- e. Type **Y** and press **Enter** key.
- f. Press 5 to **change current fixed disk drive** option menu.
-> Type the number of hard disk in **enter fixed disk drive number** -> Press the **Enter** key
- g. Press 1 to select the **Create DOS partition or Logical DOS Drive** menu option -> Press "Enter" key
- h. After verifying drive integrity, you receive following message **Do you wish to use the maximum available size for primary DOS partition ?** .
- i. Type **Y** and press the **Enter** key
After verifying drive integrity again, You receive following message **Primary Dos Partition created, drive letters changed or added.**
- j. Then press "ESC" key to return to the **fdisk** option menu.
- k. Press "ESC" key again -> You receive following message **Restart the computer** -> Press **ESC** again
-> At command prompt **C:\windows**, type **Exit** to return to windows.
- l. Remove Mobile HDD from the computer.
- m. Connect the Mobile HDD to the computer again.
- n. The **Drive Letters** will be created in **My computer** and drive icon will be shown in the system tray.
- o. Choose the Mobile HDD drive -> right click on it with mouse and do the format.

2) Fdisk and format of new hard disk at windows 2000 / XP

Choose **My computer** in the desk top screen and right click -> choose **Management** and right click

-> choose **Disk Management** and left click

- a. Right click the **Not allotted drive** in **Disk management** -> execute the **Making partition.**
- b. When **partition magician** starts, click the **Next.**
- c. If the **main partition(P)** is checked. Then click the **Next.**
- d. After verifying drive integrity, You may receive following message **Primary Dos Partition created, drive letters changed or added**, click **Next.**
- f. Choose the file system (NTFS, FAT32), then click **Next.**

* **Caution : NTFS file system can't be recognized under windows 98 / ME.**

The NTFS File system will be recognized only under windows 2000 higher

If you want to use Mobile HDD under windows 98 / ME also, please choose FAT32 System.

If you want to format over 32GB of HDD by Fat32, please format under windows 98 / ME.

After completion of **partition magician**, click the "Finish"

3) For MAC

* Caution : The driver should be Installed before “partition and Format”.

1) MAC OS 8.6 Higher

2) Mobile HDD can't be detected in the computer without this process..

Install the driver first and then initialize it.

3) If you want to use Mobile HDD in both MAC and IBM system, do **fdisk** and **format** in IBM computer.

a. First, install the driver in USB folder of MAC OS folder.

b. Restart the computer.

c. Connect Mobile HDD to the computer.

d. The driver Icon will be generated in the screen.

7. Ready to use

(1) How to check if Mobile HDD is installed well in the system ?

If the new driver is generated in [My computer], you can use Mobile HDD right away.

(2) How to remove Mobile HDD safely from your system ?

● Windows

1) Finish all operation of Mobile HDD before removing. Click the left button of mouse on the USB icon in the system tray, and select the message “Stop – [DiskDrive]HDD Model name”.



2) When you get the pop up message “You can unplug the USB storage device as safely”, click “OK”. Mobile HDD can be removed safely.



● Mac

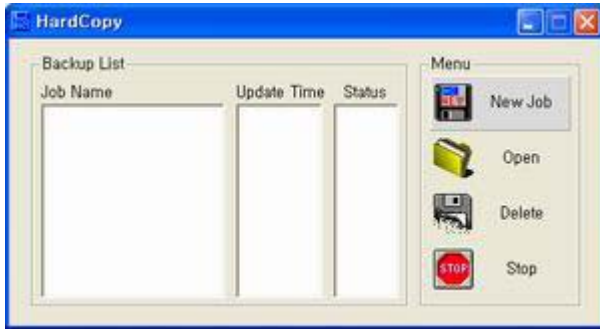
Drag & Drop the Mobile HDD icon to the trash icon on Desktop.

8. How to use HardCopy (Auto-scheduling backup software) ?

Insert the program into CD-ROM Drive. There is a directory of [Hardcopy]. Double click on the “Hardcopy.exe” icon.

Click OK to install the Hardcopy under the default directory. Don't need to restart your computer. You are ready to use Hardcopy. You can find Hardcopy icon on the desktop

To back up the data for the first time



1. Backup List: List Job name, update time, and status.

(A) Status

* "Start" – Start copy.

* "Enable" – Active state. Regular backup will be done with specified period

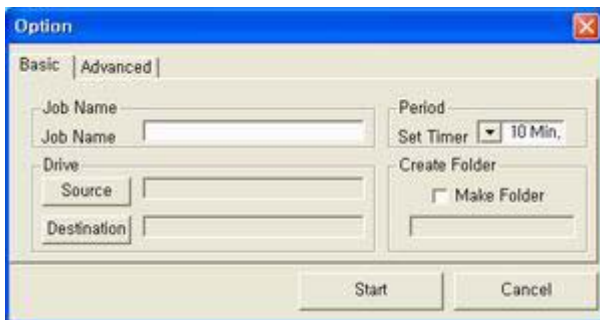
* "Disable" – Inactive state. No more regular backup activity.

* "Copy" – Under backup processing.

(B) To change the active status, click "the name of status".

2. Menu: [New Job- Make a new job] [Open- open the activated job] [Delete- remove the job] [Stop- disable the job]

Option for backup operation



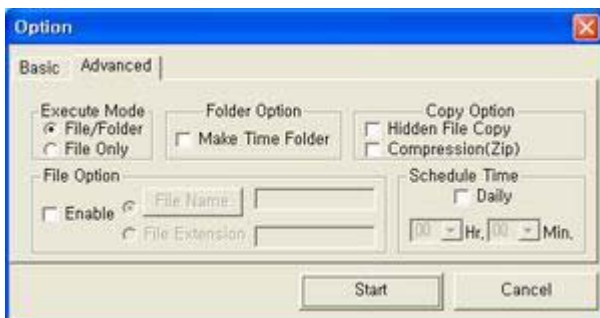
3. Basic: You can see the left window after select New Job or Open.

(A) Job name: Make a new job name.

(B) Period: Set up the regular backup schedule (default is 10min.)

(C) Drive: Select the object folder and backup destination.

(D) Create folder: Make a new backup folder name.



4. Advanced:

(A) Execute

a. File/Folder: backup file and folder.

b. File: backup only file.

(B) Folder option: Separate backup time folder is created for each task.

(C) Copy option: Can backup hidden file, or backup with file compression.

(D) File option: You can backup specific file with selection of file name and file extension.

(E) Schedule Time: IF you have chosen a daily schedule, you can specify an exact time of the day when it runs.

After this schedule time setting, previous general period setting is disregarded.

- You can change the property of job after opening the specific job.

9. Trouble shooting

1) Mobile HDD is not recognized in the system after plugging.

- If your OS is windows 98 SE, check if drive installation is finished well, or not.
- If you bought new HDD, check if partition and formatting is completed or not.

2) Mobile HDD doesn't work well with "clicking" sound although USB icon is shown in system tray after plugging.

- It may cause from the power insufficiency. If you meet this kind of trouble, use the offered USB DC cable for solving the power insufficiency
(If you can't overcome this trouble despite of using USB power cable, please use another DC adapter)
Please refer to the 'Cable connection and switching'

3) Under Windows XP, finding message "Hi-Speed USB Installation is fixed incorrectly to Hi-Speed USB Installation Hub"

- This message is shown when system don't support USB2.0, and Mobile HDD will work at USB1.1 in this case.
You should upgrade main board that support USB2.0 or use USB 2.0 PCI card (PCMCIA card).

10. Warranty

● Limited Warranty

Valueplus, Inc. warrants that the product enclosed to be free of defects for a period of 1-year from the date of purchase. In the event of a defect in material or workmanship during the warranty period, Valueplus, Inc. at its discretion, will repair or replace the defective product when the defectively product is returned to Manufacturer by the owner/authorized seller.

The remedy for this breach of warranty is limited to servicing or replacement only and should not cover any other damages, including but not limited to the loss of profit, special, incidental, consequential, and other similar claims. If the product is found to be defective, Valueplus, inc. at its option, agrees to replace or repair the product without extra charge except as stated below, provided that you can show dated proof of purchase. If you ship the product back to Valueplus, inc. you must assume the risk of damage or loss in transit. You must use the original container (or equivalent) and pay the shipping charge.

Valueplus, inc. may replace or repair the product with new or reconditioned parts, and the replaced parts or product become the property of Valueplus, inc. In case of the failure caused by careless mistakes and the natural disaster such as fire, flood, earthquake, and damage from water, it'll be charged.

● Warranty registration

Product		Model	
Serial No.		Date of purchasing	Date Month year
Place of purchasing		Phone	
Customer		Phone	
Customer address			

- In case of failure, please contact Manufacturer's service center.

FCC Compliance Statement

This device complies with Part 15 of the FCC Rules.
Operation is subject to the following two conditions:
(1) This Device may not cause harmful interference, and
(2) This device must accept any interference received,
including interference that may cause undesired operation.

Caution : Any changes or modifications in construction of this device which are not expressly approved the party responsible for compliance could void the user's authority to operate the equipment.

NOTE : This equipment has been tested and found to comply with the limits for a Class B digital device, pursuant to part 15 of the FCC Rules. These limits are designed to provide reasonable protection against harmful interference in a residential installation. This equipment generates, uses and can radiate radio frequency energy and, if not installed and used in accordance with the instructions, may cause harmful interference to radio communications, However, there is no guarantee that interference will not occur in a particular installation. If this equipment does cause harmful interference to radio or television reception, which can be determined by turning the equipment off and on, the user is encouraged to try to correct the interference by one or more of the following measures:

- Reorient or relocate the receiving antenna.
- Increase the separation between the equipment and receiver.
- Connect the equipment into an outlet on a circuit different from that to which the receiver is connected.
- Consult the dealer or an experienced radio/TV technician for help.