

User Manual

Product Name:tablet

Model Name:TM800A740M

Brand Name:NuVision

Manufacture:Shenzhen Vastking Electronic Co .,LTD.

Getting Started

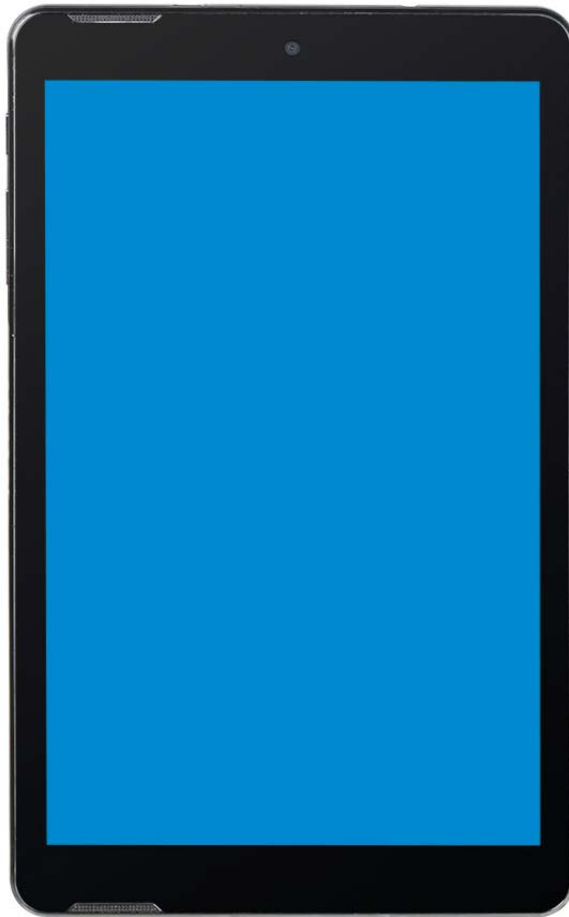
This guide has been designed to help familiarize you with the features and functions of the Solo 8AC, and get you 'up-and-running' as soon as possible. Once you're online, visit www.nuvision.com to register your tablet, and access more information to optimize your NuVision experience.



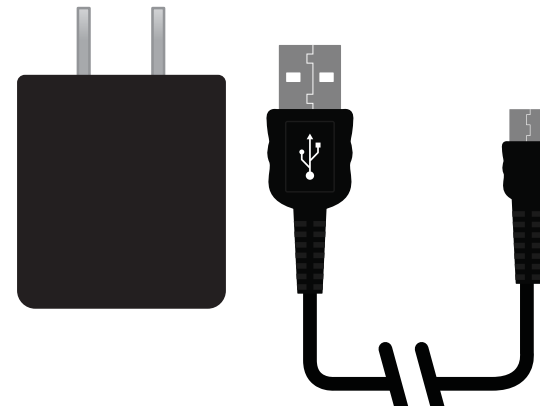
**Remember to Register your Tablet
at www.nuvision.com/product-registration**

Check Package Contents

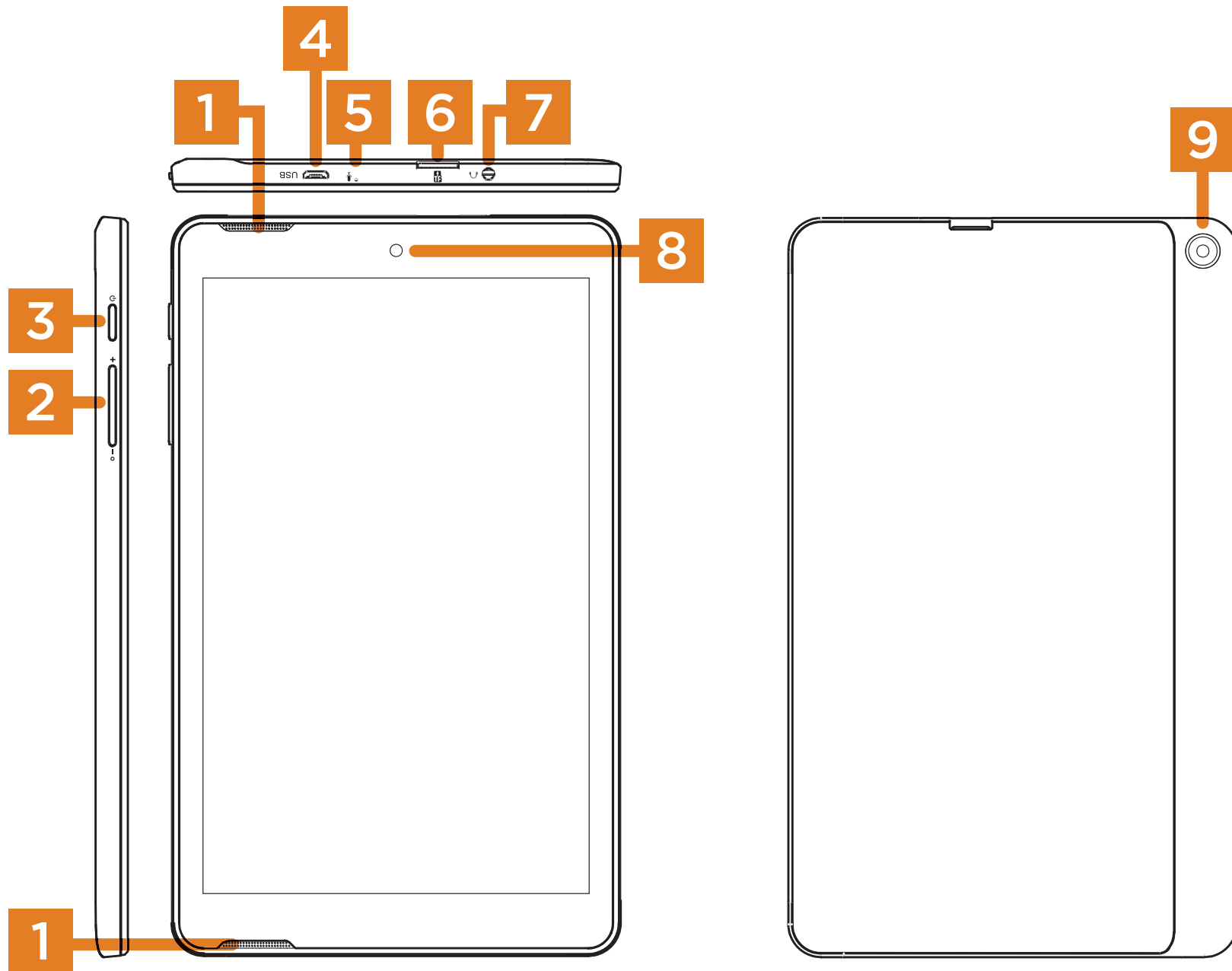
TM800A740M
Tablet



AC Adapter

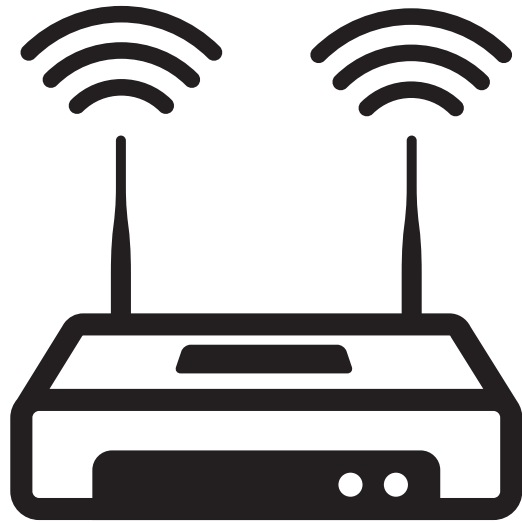


Tablet Overview



1	Speakers
2	Volume (+/-)
3	Power Button
4	Micro USB
5	Microphone
6	Micro TF Memory Card Slot
7	3.5mm Headphone Jack Plug
8	Front Camera Lens
9	Rear Camera Lens

To Connect to the Internet, you will need:



(Home WiFi Router)

or

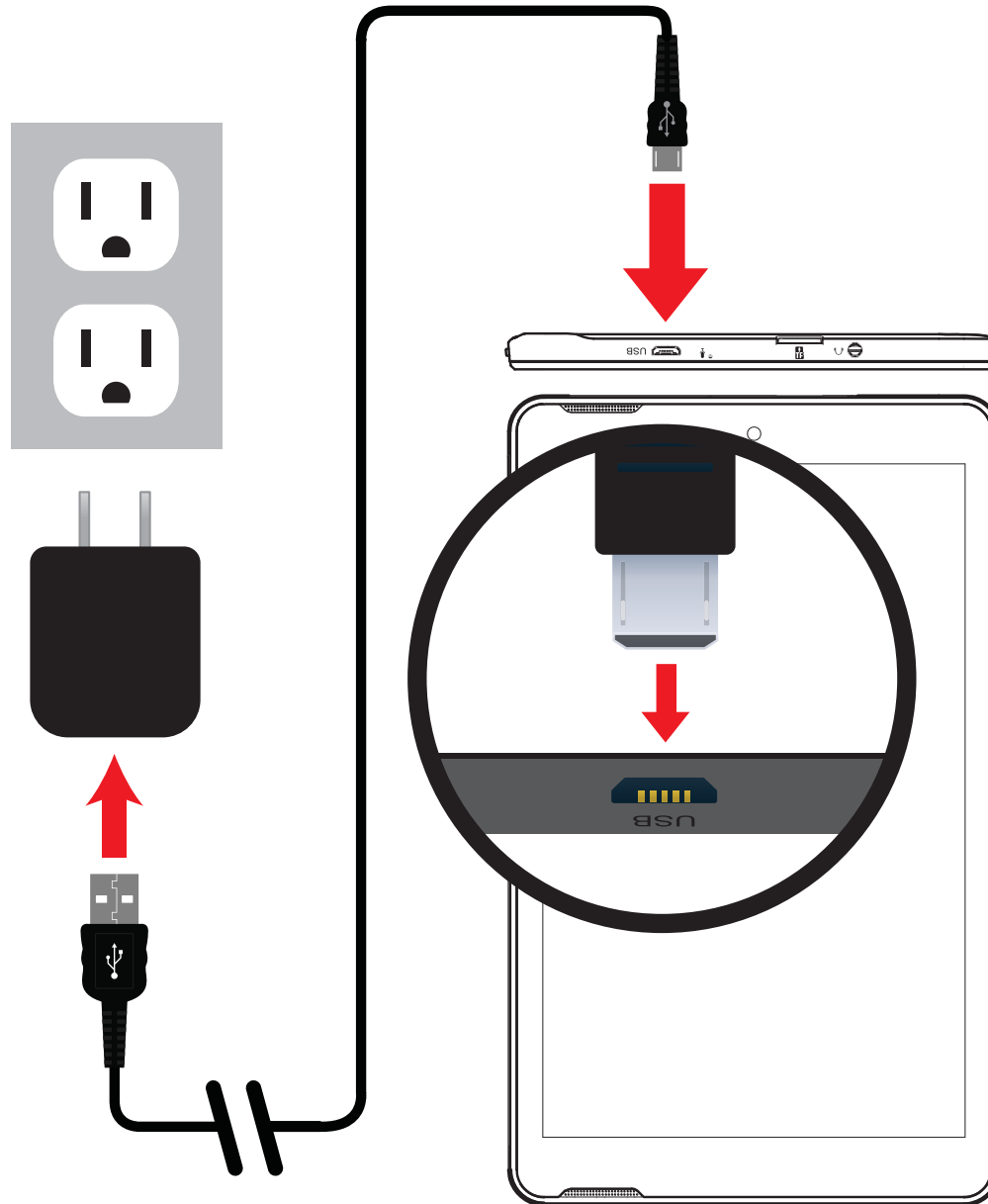


and



- A Home WiFi Router OR a publicly-available WiFi signal (ie., In a library, coffee shop or school.)
- The Network Name (SSID) and Network Security Key (ie., Password) for the Internet Connection.

1 Charge the Tablet



Charge

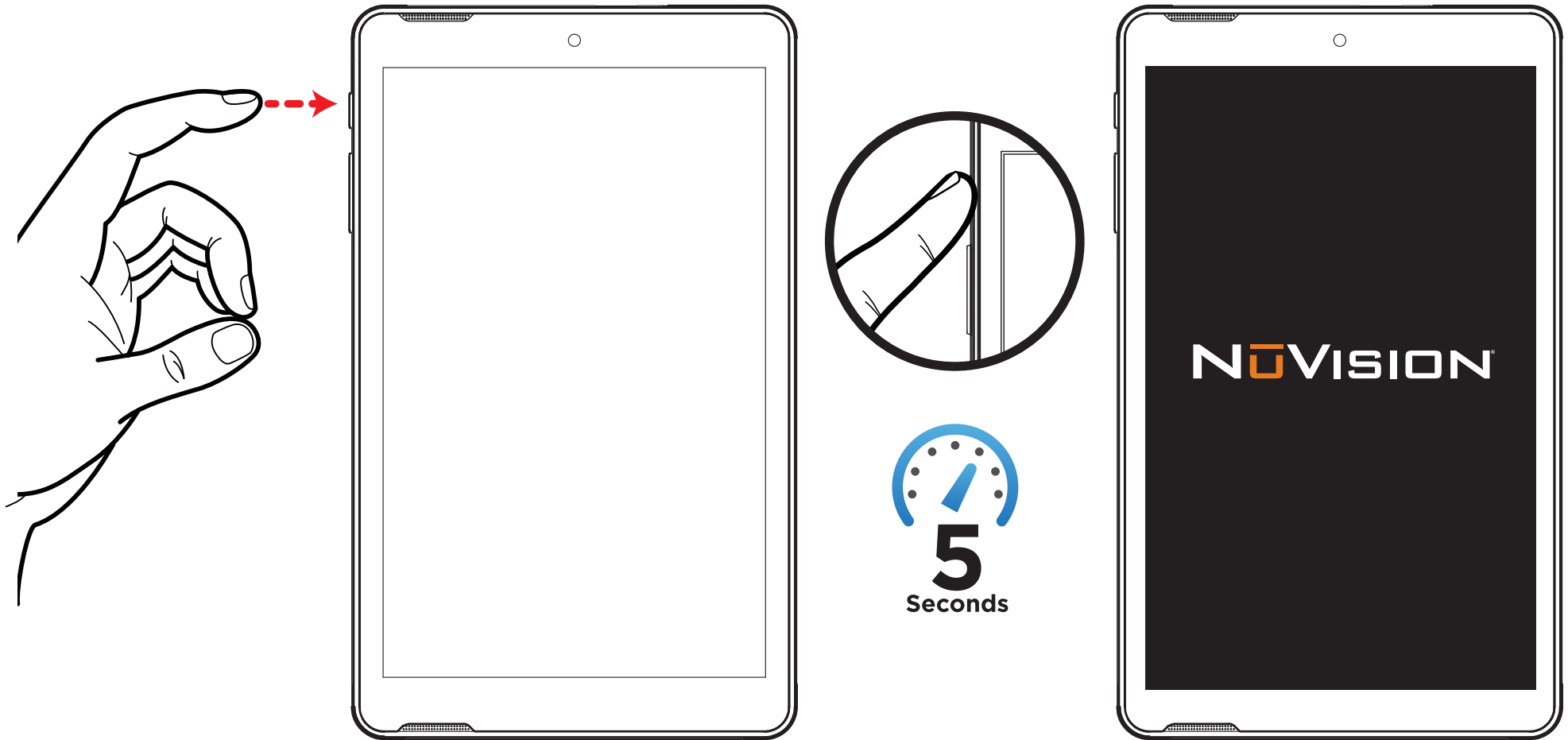
6
Hours

Connect the power adapter to a wall outlet, then to the tablet's micro USB port as shown. (The Charge indicator LED light will appear.) It is recommended to fully charge the battery before first use.

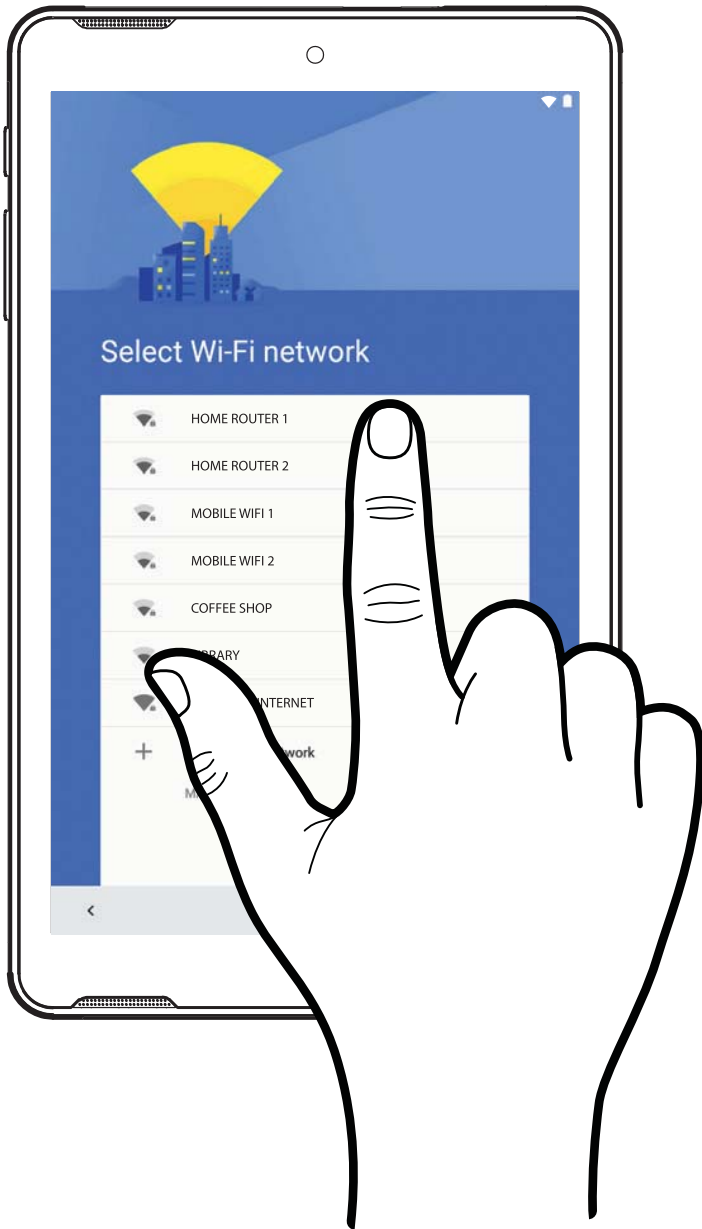
It is recommended to fully charge the battery before first use. Typical battery charge time is between 4-6 hours.

Note: It is normal for the tablet to become warm while charging.

2 Turn-on the Tablet and follow the prompts.



Use the Setup Wizard **3**



Follow the prompts on-screen. During this process, you will be able to:

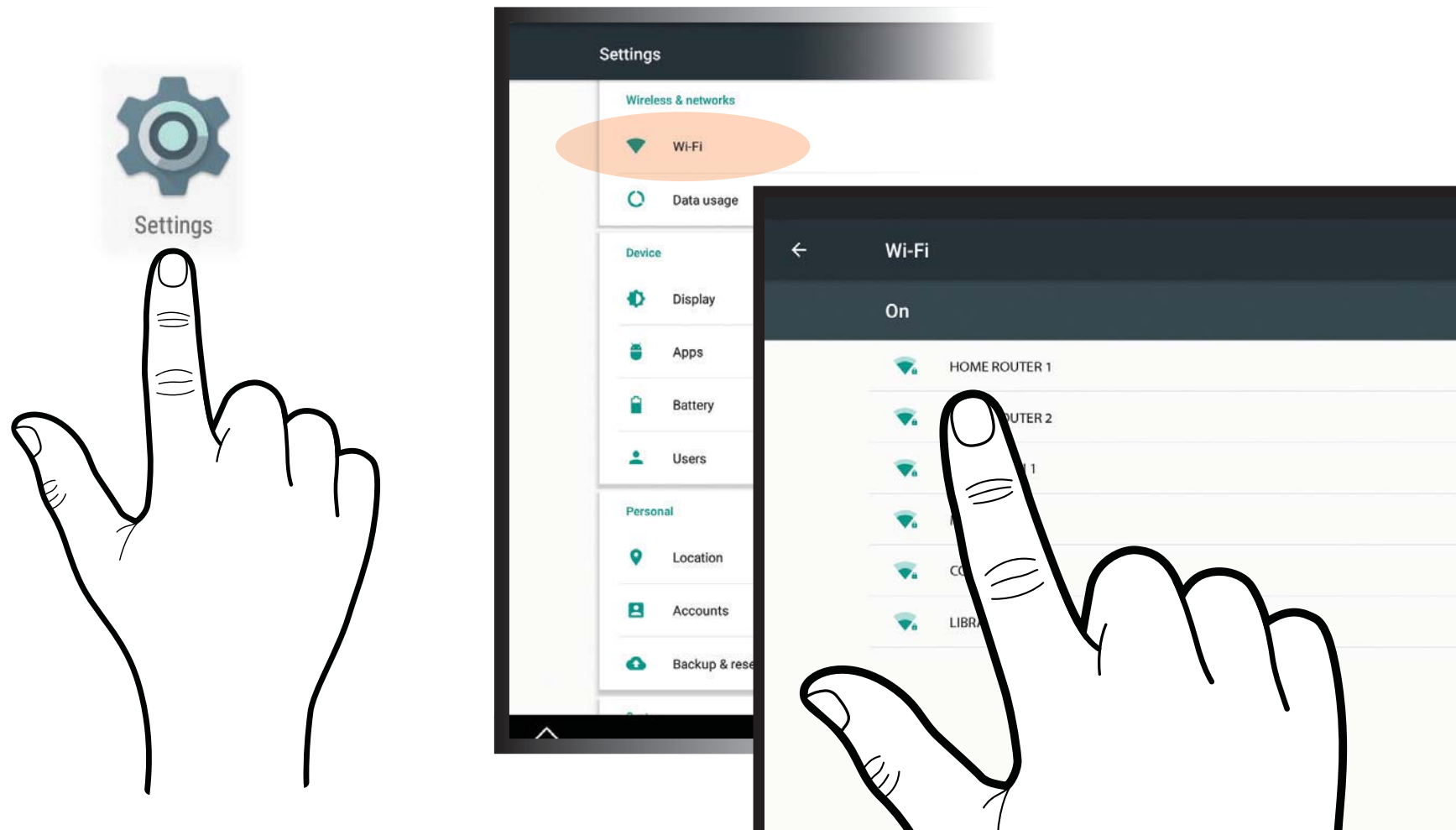
- Connect to a WiFi network
Select a WiFi Network and enter the Password **or** select 'skip' this section at the bottom of the list. You'll be able to connect later (See page 14.)
- Add an existing Gmail account or create a new one. **(You'll need a Gmail account to access Google Play.)**
- Personalize & secure the unit.

4 Familiarize yourself with the Home screen.

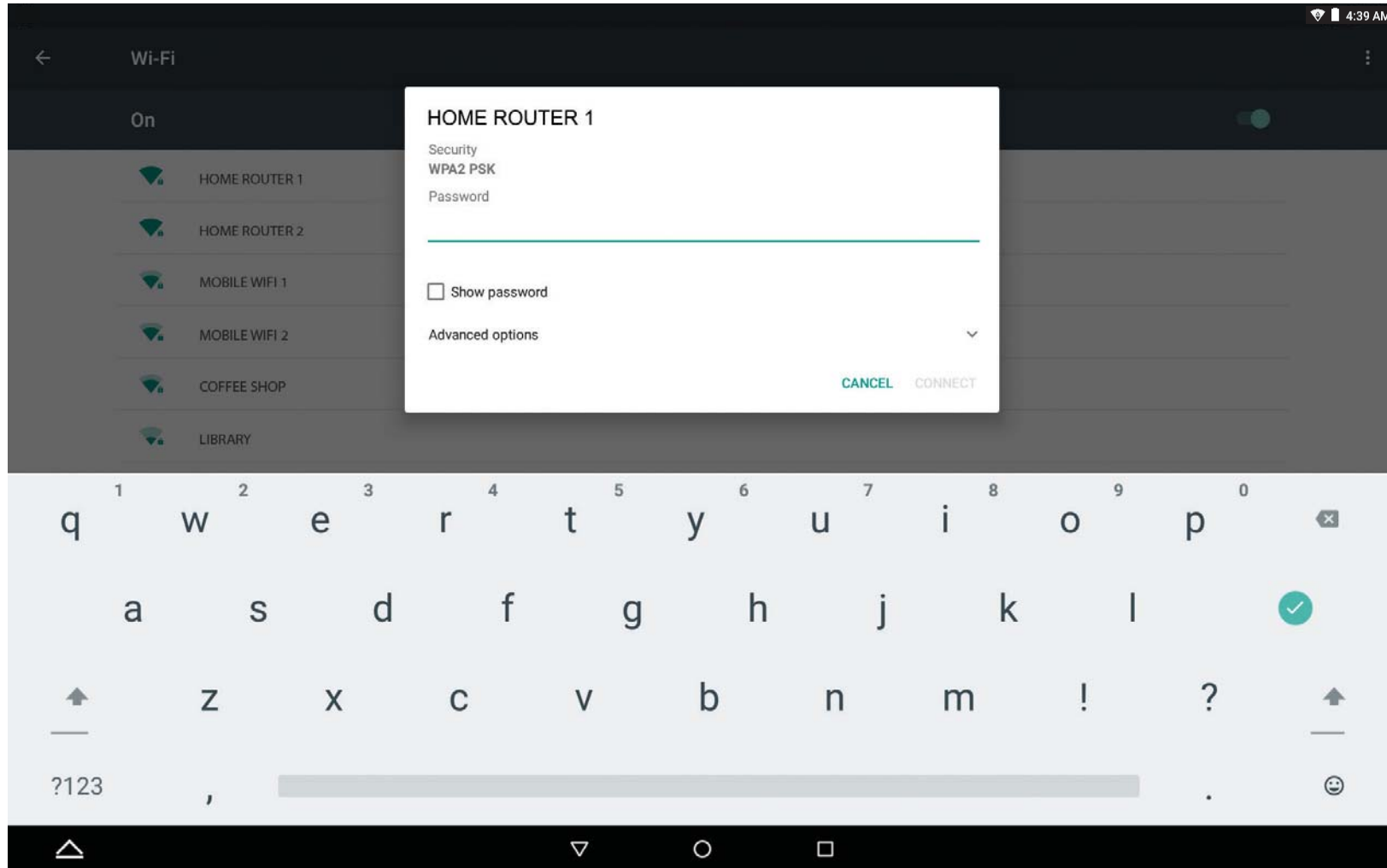


1	Activity / Downloads (Not Shown): Tap to view. Swipe down to expand to Quick Settings.
2	Search: Tap to activate keyboard for search inquiries. Tap microphone to speak query.
3	App: Application on the home screen. Activate by tapping. Remove by holding and moving up to “Remove” icon. (Important: To access the Google Play, you will need a Gmail account.)
4	Go to Previous Page
5	Go to Home Page
6	Overview: See all active/open apps. Swiping to left/right will close the app.
7	Screenshot: Takes a screenshot of the current screen/activity.
8	Volume: Increase/Decrease volume.
9	App Folder: A collection of multiple apps. Tap to expand.
10	App Tray: View all apps available on the tablet.
11	Status Bar: Shows battery level, time, WiFi strength and Owner/ Guest Status.

5 Connecting to the Internet



Tap on the Settings icon to go to the Settings screen. Select “WiFi”, and a menu will appear with all available WiFi signals. Look for and select the Network Name in your WiFi listing, on your tablet.



Enter the Password and select “CONNECT”. The tablet will authenticate the Password, and connect you to the WiFi if it is correct. See page 6 for information on finding your Network Name and Network Security Key (ie., Password).

6 Connecting to the Internet



Once you have a WiFi connection, you can go to the internet using the Chrome browser.

Tip: If you don't see the Chrome icon on your desktop, tap on the App Tray icon or the Google™ App Tray to view all available apps.

www.NuVision.com
& shopNuVision.com

NuVision.com is your online resource for:

- Product Registration
- Frequently-Asked Questions (F.A.Qs)
- Information and tips on how to best use your tablet.
- Customer Service Chat & email.

Customer Service

Chat @ www.NuVision.com

www.nuvision.com/support

Phone:

(800) 890-1288

Hours: 8:30am to 5:30pm PST M-F

Email: cs@nuvision.com



Register your tablet today at www.nuvision.com

Important Safety Instructions

This device complies with part 15 of the FCC rules. Operation is subject to the following two conditions: (1) this device may not cause harmful interference, and (2) this device must accept any interference received, including interference that may cause undesired operation.

Please read the following instructions and notices before using your tablet.

1. Avoid using in extremely hot, cold, dusty, damp or wet environments.
2. The tablet is not moisture or water-resistant. Avoid using the tablet around sources of water.
3. Avoid dropping or forcibly placing the tablet onto a hard surface. This may damage the screen or internal electronic components and void the warranty.
4. Do not use alcohol, thinner or benzene to clean the surface of the tablet. Use only cleaning products designed for computer tablet devices.
5. Do not use the tablet while walking or driving.
6. Excessive use of earphones at high volume may lead to hearing impairment. Limit earphone usage, and adjust the volume to a moderate level only.
7. The images in this manual may vary slightly from the actual product.
8. Charge the tablet battery under any of the following circumstances:
 - a. Battery level icon indicates low power
 - b. Tablet powers-off automatically, continuing to do so even after restarting.
 - c. On-screen keys or display does not function properly.
9. Do not suddenly disconnect the tablet when formatting, uploading or downloading data. This may lead to program errors (e.g., system or screen “freezing”.)
10. Static discharge is normal and can occur in an electronic device. Although not life threatening, it may corrupt files or damage memory and its content. Do not use accessories that are not from Nuvision.
11. Dismantling the tablet will void the manufacturer’s warranty. If you are experiencing problems, review this quick start guide or visit the FAQ online at www.nuvision.com.
12. Tablet functions, hardware, software, and warranty information may be revised by the manufacturer or their respective owners, and subject to change without notice.
13. Warning: This product may contain a chemical known to the State of California to cause cancer, birth defects, or other reproductive harm.

Limited Warranty

TMAX Digital Inc. warrants this product against defects in material or workmanship for a period of one (1) year from the date of original purchase (“Limited Warranty period”) and at its own option either to (a) repair your product with new or refurbished parts, or (b) replace it with a new or a refurbished product. TMAX Digital Inc. will incur no liability whatsoever to provide packaging for warranty items. Upon receipt of the warranty item, should it be determined that the packaging is insufficient, TMAX Digital Inc may at its discretion, void the warranty. The consumer is responsible for the transportation cost to TMAX Digital Inc. A nominal handling fee does apply. You must receive a return authorization number before sending a unit in for service.

TO OBTAIN WARRANTY SERVICE

Should it be necessary to contact Customer Support, call (800) 890-1288 or email at cs@nuvision.com. You will be instructed on how your claim will be processed. Have pertinent information available including proof of purchase and an understanding of the issue.

You must retain the original bill of sale to provide proof of purchase. Call or email Customer Support to assess the problem. No service or shipment will be accepted unless an RMA # is provided to you and attached or printed to the shipping carton along with a copy of the bill of sale.

This warranty is effective only if the product was purchased through an Authorized Retail Seller and the unit is operated in North America. You are responsible for all tariffs and taxes imposed to ship or receive warranty or replacement units to and from the U.S. Warranty extends only to defects in materials or workmanship and does not extend to any other products that have been lost, discarded or damaged by misuse, accident, neglect, acts of God, such as lightning, improper installation, improper maintenance or modification. The Limited Warranty ALSO DOES NOT COVER damages from having been previously altered, modified, repaired or serviced by anyone other than the service facilities authorized by TMAX Digital Inc. to render such services. Warranty does not cover cosmetic damage or lost accessories.

TMAX DIGITAL Inc. reserves the rights to change the warranty from time to time without written notice to you.

DISCLAIMER OF WARRANTY

EXCEPT FOR THE FOREGOING WARRANTIES, TMAX DIGITAL INC. HEREBY DISCLAIMS AND EXCLUDES ALL OTHER WARRANTIES, EXPRESSED OR IMPLIED, INCLUDING, BUT NOT LIMITED TO ANY AND/OR ALL IMPLIED WARRANTIES OF MERCHANTABILITY, FITNESS FOR A PARTICULAR PURPOSE AND/OR ANY WARRANTY WITH REGARDS TO ANY CLAIMS OF INFRINGEMENT.

LIMITATION OF LIABILITY

BOTH YOURS AND TMAX'S LIABILITY SHALL BE LIMITED TO THE PRICE PAID FOR PRODUCT. IN NO EVENT SHALL TMAX DIGITAL INC. BE LIABLE FOR ANY SPECIAL, INDIRECT, INCIDENTAL, OR CONSEQUENTIAL DAMAGES OF ANY KIND INCLUDING, BUT NOT LIMITED TO, COMPENSATION, REIMBURSEMENT OR DAMAGES ON ACCOUNT OF THE LOSS OF PRESENT OR PROSPECTIVE PROFITS OR FOR ANY OTHER REASON WHATSOEVER.

Google, Google Play and other marks are trademarks of Google Inc.

Contact NuVision Technical Support

Email: cs@nuvision.com

Phone: (800) 890-1288

Hours: 8:30am to 5:30pm PST M-F

FCC Warning

This device complies with part 15 of the FCC Rules. Operation is subject to the following two conditions: (1) This device may not cause harmful interference, and (2) this device must accept any interference received, including interference that may cause undesired operation.

Any Changes or modifications not expressly approved by the party responsible for compliance could void the user's authority to operate the equipment.

Note: This equipment has been tested and found to comply with the limits for a Class B digital device, pursuant to part 15 of the FCC Rules. These limits are designed to provide reasonable protection against harmful interference in a residential installation. This equipment generates uses and can radiate radio frequency energy and, if not installed and used in accordance with the instructions, may cause harmful interference to radio communications. However, there is no guarantee that interference will not occur in a particular installation. If this equipment does cause harmful interference to radio or television reception, which can be determined by turning the equipment off and on, the user is encouraged to try to correct the interference by one or more of the following measures:

- ▶ -Reorient or relocate the receiving antenna.
- ▶ -Increase the separation between the equipment and receiver.
- ▶ -Connect the equipment into an outlet on a circuit different from that to which the receiver is connected.
- ▶ -Consult the dealer or an experienced radio/TV technician for help.

Specific Absorption Rate (SAR) information:

This tablet meets the government's requirements for exposure to radio waves. The guidelines are based on standards that were developed by independent scientific organizations through periodic and thorough evaluation of scientific studies. The standards include a substantial safety margin designed to assure the

safety of all persons regardless of age or health.

FCC RF Exposure Information and Statement

The SAR limit of USA (FCC) is 1.6 W/kg averaged over one gram of tissue. Device types: tablet (FCC ID: 2AFA3-TM800A740M) has also been tested against this SAR limit. The highest SAR value reported under this standard during product certification on the body is 1.442W/kg. The This device was tested for typical body-worn operations with the back of the handset kept 0mm from the body. To maintain compliance with FCC RF exposure requirements, use accessories that maintain a 0mm separation distance between the user's body and the back of the handset. The use of belt clips, holsters and similar accessories should not contain metallic components in its assembly. The use of accessories that do not satisfy these requirements may not comply with FCC RF exposure requirements, and should be avoided.

Body-worn Operation

This device was tested for typical body-worn operations. To comply with RF exposure requirements, a minimum separation distance of 0mm must be maintained between the user's body and the handset, including the antenna. Third-party belt-clips, holsters, and similar accessories used by this device should not contain any metallic components. Body-worn accessories that do not meet these requirements may not comply with RF exposure requirements and should be avoided. Use only the supplied or an approved antenna.