



## User Manual

Product Name: A laptop

Brand: Proscan

Model: V100, PLTNB1035-B, PLTNB1035-B-MN

Manufacture: Shenzhen Vastking Electronic  
Co.,LTD.

## **Product Features**

OS Windows 10 Home

10.1" 1024\*600pixels

Quad core

DDR 2GB, eMMC 32GB

Bluetooth v2.1+EDR and v4.0

Camera front 0.3MP

Wi-Fi

Support USB host

Micro SD

Dual speakers

TV-out

## **Introduction**

Thank you for your choosing the new Notebook.


This guide serves to enable users to get to know and familiar with our product as soon as possible.

Here we have made a brief introduction to the key layout and definitions in figures and words.

## **Contents**

I . Precautions before Use	03
II Key Layout and Definitions	04
III. Key Descriptions	05
IV. Introduction to Desktop	05
1. Windows 10 Start Screen	05
2. Apps introduction	05
3. Start menu	07
4. Multitasking operating interface	08
V. Basic Operations	08
1. Sleep, Restart, and Shutdown	09

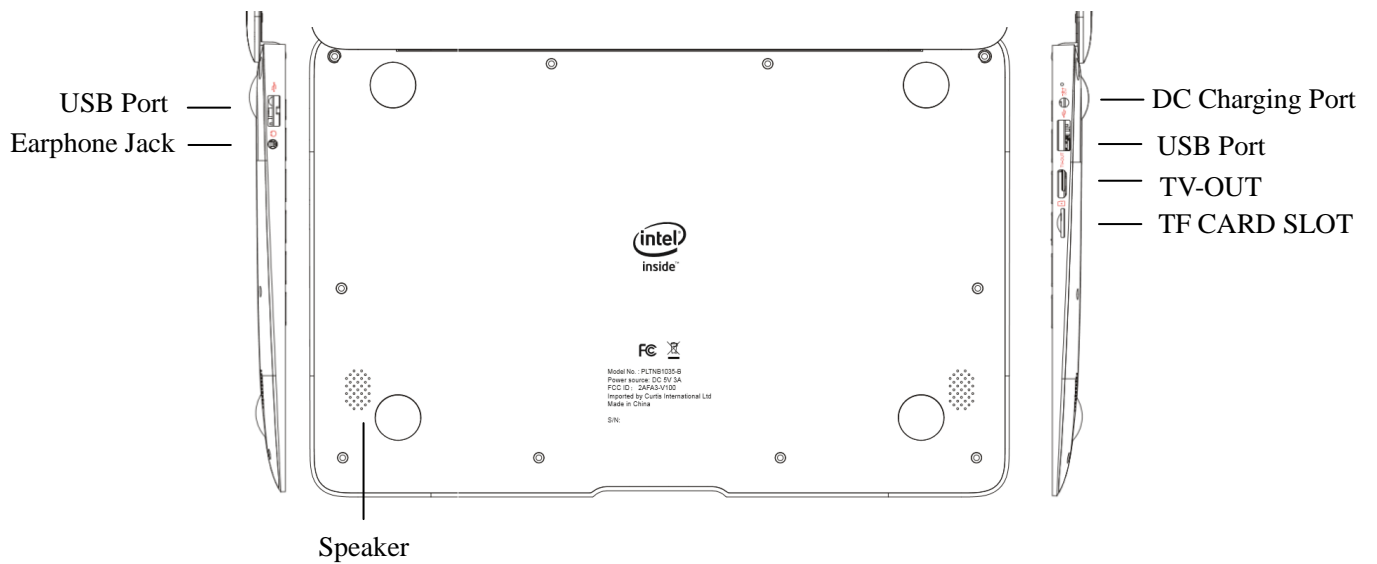
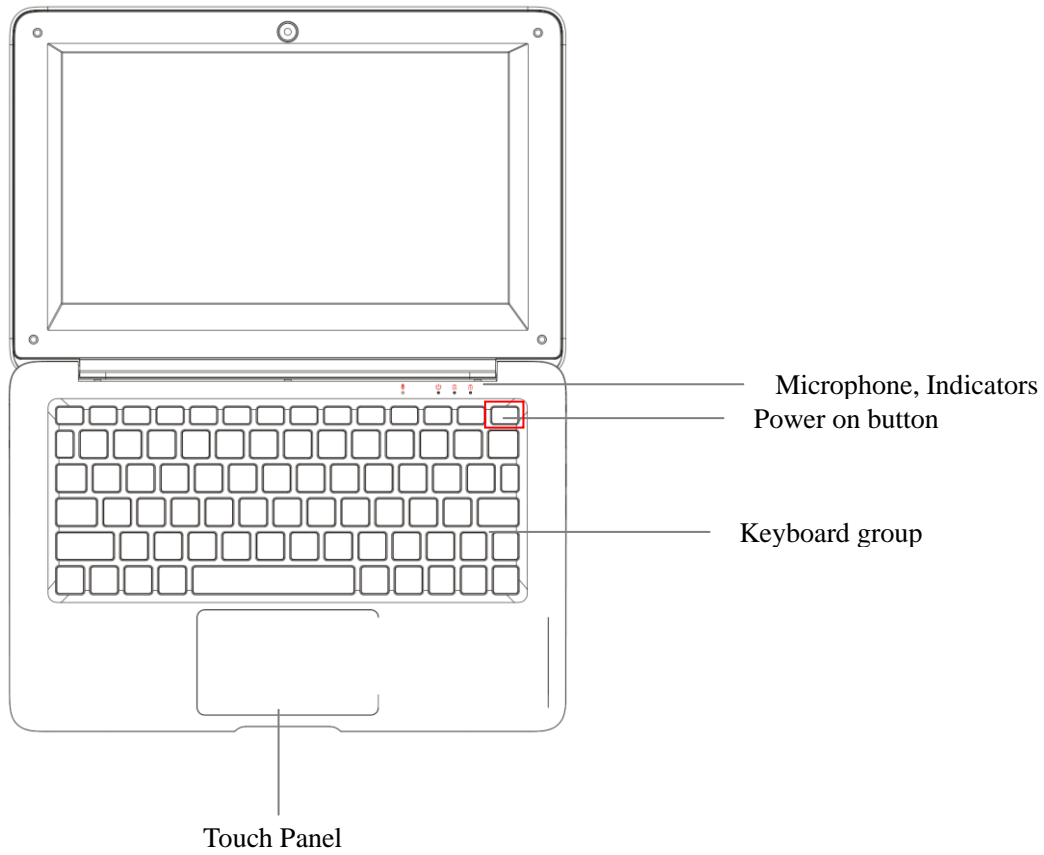
## I . Precautions before Use

1. This production is suitable for use in non-tropic areas below 2,000 meters, and the mark  in the nameplate indicates the product is suitable for use in non-tropic areas.
2. Prevent the Notebook from falling to the ground or being strongly impacted otherwise.
3. Do not use it in the long term in any environment where the air is too cold, too hot (<math><35^{\circ}\text{C}</math>), too humid or with too much dust. Do not expose the Notebook to sunlight.
4. Avoid using it in the strong magnetic and strong static environment as much as possible.
5. Once any water or other liquid splashes onto the Notebook, close it immediately and do not use it until it dries out.
6. Do not clean the Notebook with any detergent containing chemical element or other liquid to avoid causing damage due to corrosion and becoming damp. If cleaning is really necessary, clean it with dry soft cloth tissue paper.
7. Our company shall not bear any and all responsibilities for loss or deletion of material inside the machine caused due to abnormal software and hardware operation, maintenance or any other accident.
8. Please back up your important material at any time to avoid loss.
9. Please do not disassemble the Notebook by yourself; otherwise you will lose the right to warranty.
10. This product supports the overwhelming majority of mainstream brands of 3G DONGLE network cards. The cases for 3G Dongle may be different. It is suggested that you test it to make sure it is OK before buying it.
11. Quick Use Guide and the relevant software shall be updated at any time. If any anything is found to be inconsistent with the Quick Use Guide, the material object shall prevail.
12. Replacement with incorrect type batteries may cause explosion. Make sure to use original batteries.

## II . Key Layout and Definitions

Front Camera





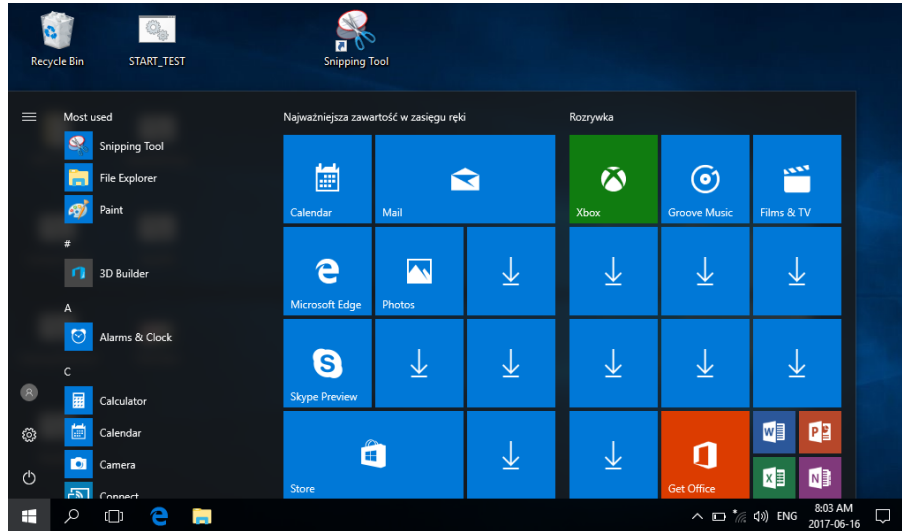
### III. Descriptions of Keys

Attention: Keyboard configure is according to the specific type of the Notebook you have bought.

## VI. Introduction to Desktop

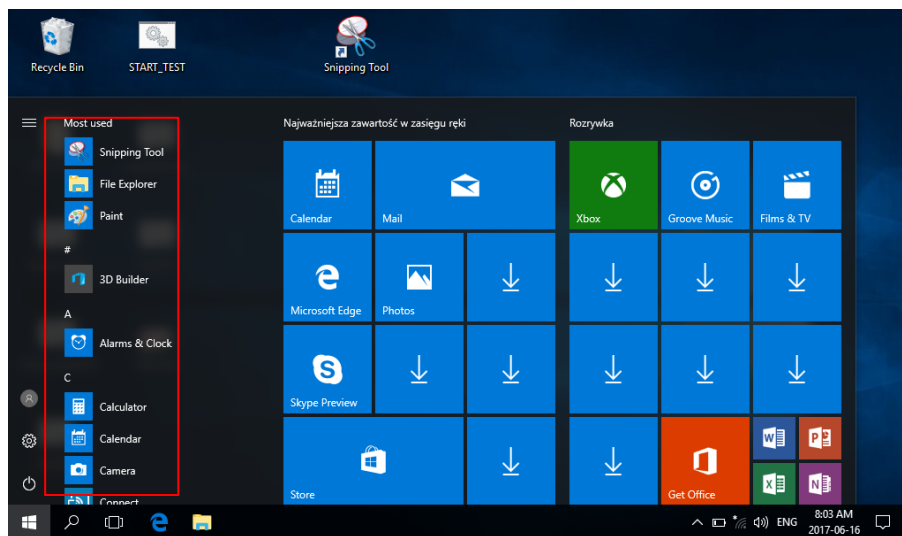
1. Windows 10 start image: On the start screen, you can see many programs fixed in the image. These application programs are displayed in the form of “magnet”. As long as you click them, you can easily visit them.

You need to log on your Microsoft account before the application program completely runs.

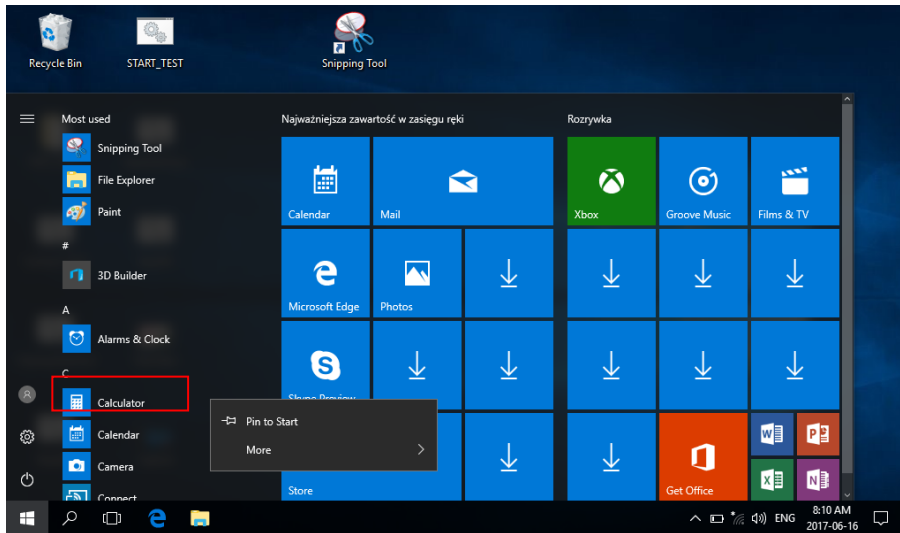


## 2. Introduction to app Interface

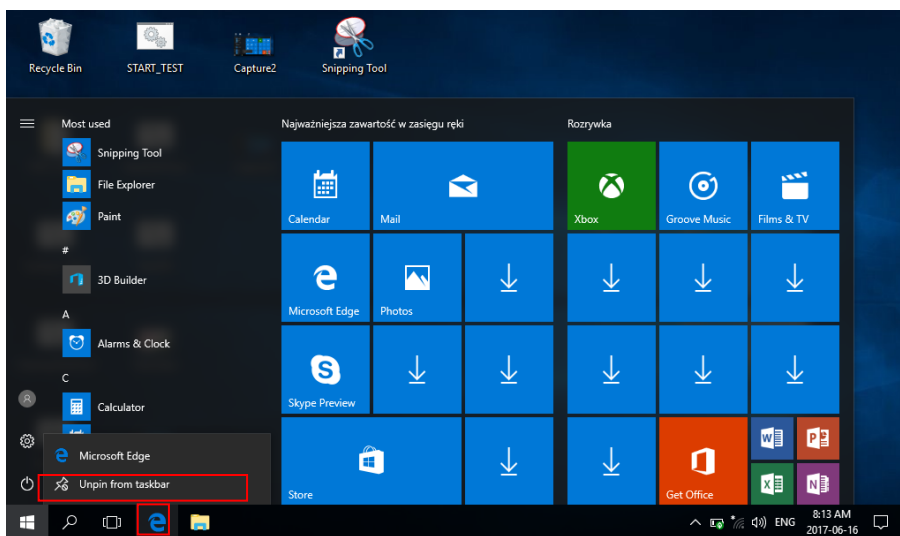
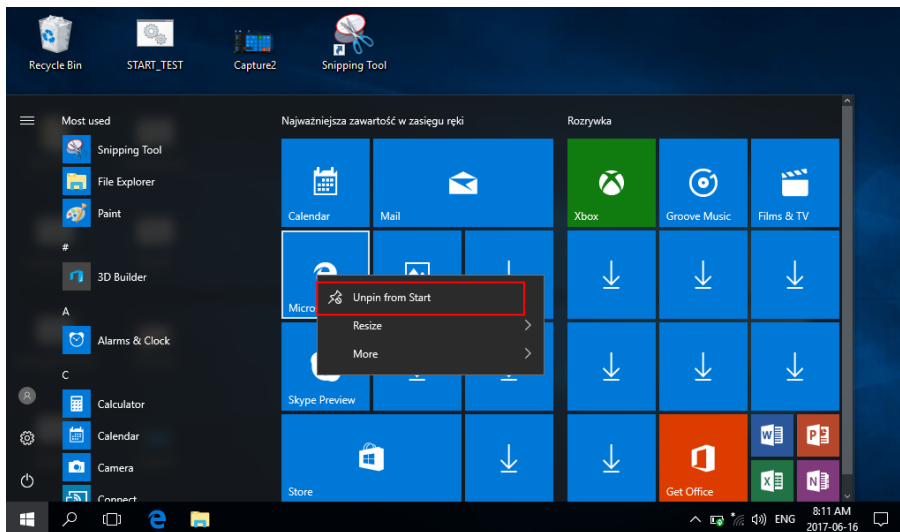
Besides the application programs already fixed on the start screen, you can also start other application programs in application list, such as other software application programs attached to the Notebook.



If you want to fix more application programs on the start interface or taskbar, see the operation in the figure below, (1) Click the properties icon (2) Right-Clicking the application (3) Click the Pin to start or pin to taskbar, as follow:

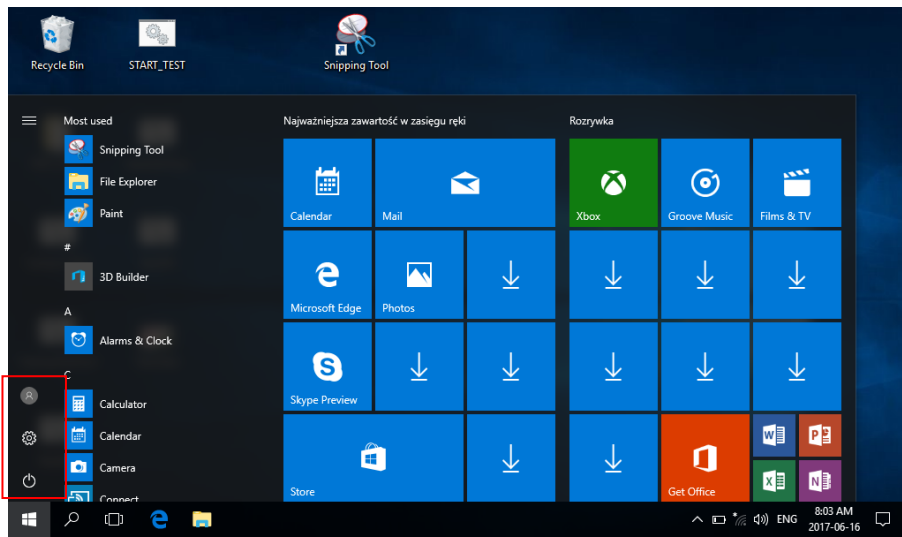



Conversely, if you want to cancel or delete a certain application in the start screen or taskbar, (1) Right-Clicking the application, (2) Click the “Unpin from Start” or “Unpin this program from taskbar”




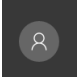
### 3. Start Menu

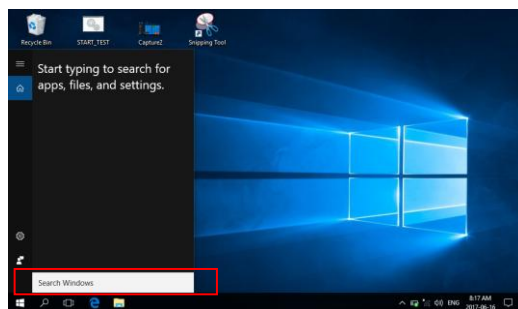
Under PC mode, press Start ion, Start Menu will display, including: Power, Setup, account.



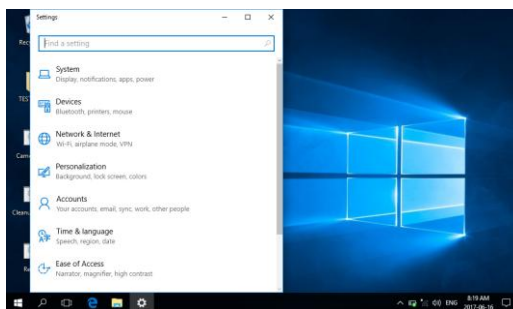
 Can Sleep/Shut down/Restart the Notebook

 Can let you set up the Notebook.

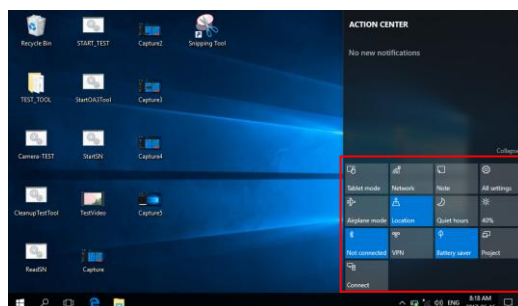
 Can change your account setting



Search menu



Setting Menu

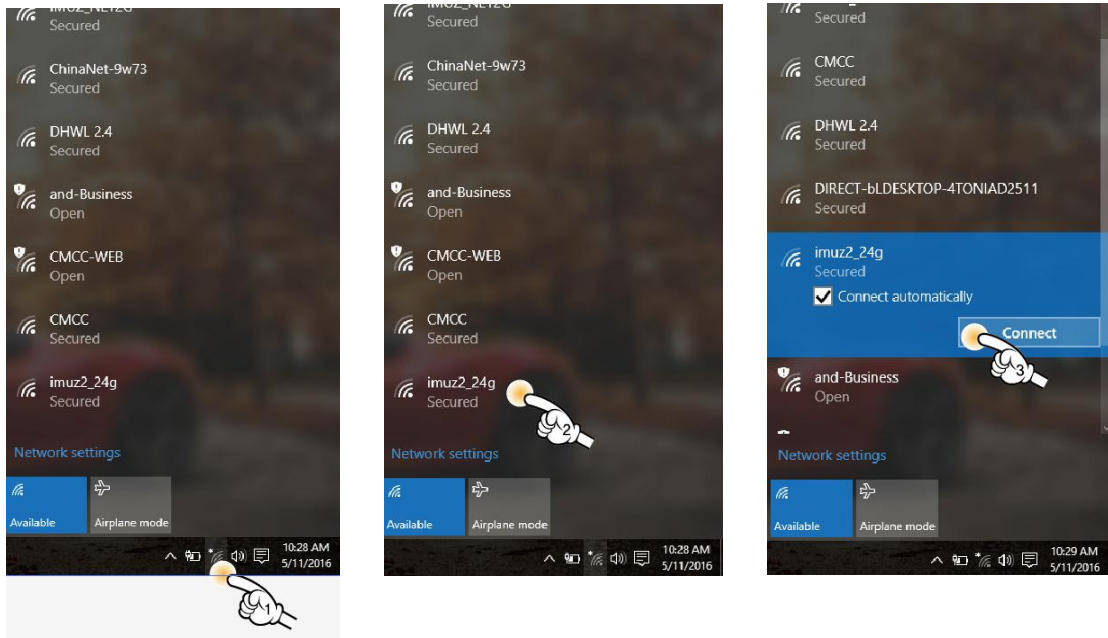


Action Center

Action Center is a notification center also allows for quick settings like Tablet / PC mode, Wi-Fi, Bluetooth etc.

### Connecting wireless LAN

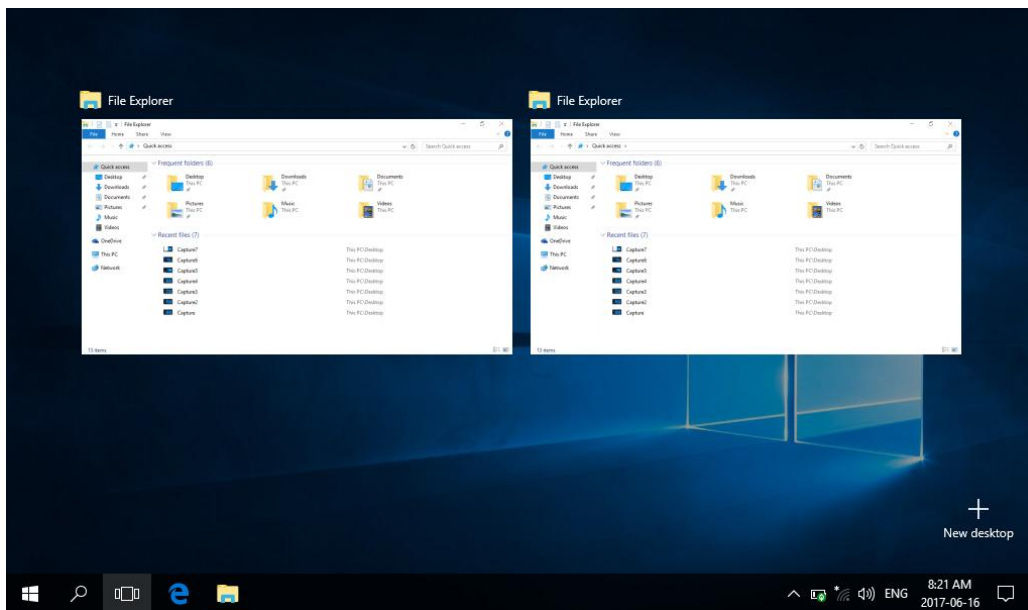
1. Click the Wi-Fi icon on the bottom right corner of screen. All available Wi-Fi list will be shown up.
2. Click the desired Wi-Fi on the list.
3. Click the connect icon.



※ Network security key need to be checked by network manager

### 4. Multitasking operating interface

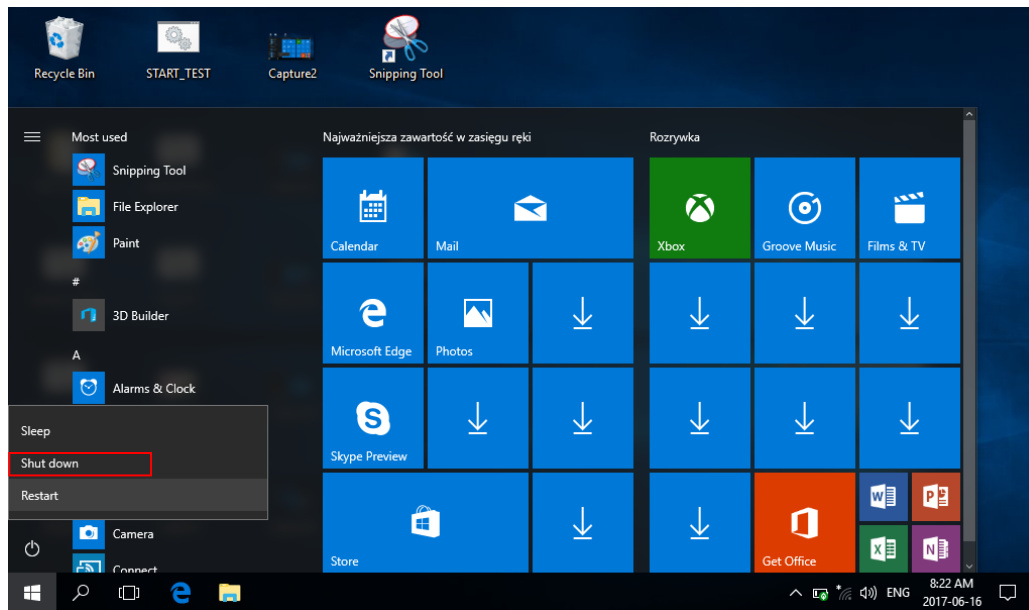
If you click the Task View, the running applications will be display. We can enter the application, also can be deleted.





## V. Basic Operations

### 1. Sleep, Shut down and Restart



## Specification

OS	Window 10 Home
CPU	Intel Atom BayTrail Quad core
RAM	2GB
Display	10.1" TN 1024*600 Pixel
Built-in flash memory	32 GB
Earphone jack	3.5 ø
USB	2 x 5pin Full size USB port (2.0 high speed)
TV-out	Yes
Micro SD	Micro SD card
Speaker	2x Speakers
Camera	0.3M pixel (Front)
Wi-Fi	802.11b/g/n
Bluetooth	v2.1+EDR and v4.0
Battery	3.8V Lithium Battery
Power	5V 3A 3.5 øDC connector
Dimension	278 x 185 x 20.8 mm

## **FCC Warning**

This device complies with part 15 of the FCC Rules. Operation is subject to the following two conditions: (1) This device may not cause harmful interference, and (2) this device must accept any interference received, including interference that may cause undesired operation.

Any Changes or modifications not expressly approved by the party responsible for compliance could void the user's authority to operate the equipment.

**Note:** This equipment has been tested and found to comply with the limits for a Class B digital device, pursuant to part 15 of the FCC Rules. These limits are designed to provide reasonable protection against harmful interference in a residential installation. This equipment generates uses and can radiate radio frequency energy and, if not installed and used in accordance with the instructions, may cause harmful interference to radio communications. However, there is no guarantee that interference will not occur in a particular installation. If this equipment does cause harmful interference to radio or television reception, which can be determined by turning the equipment off and on, the user is encouraged to try to correct the interference by one or more of the following measures:

- ▶ -Reorient or relocate the receiving antenna.
- ▶ -Increase the separation between the equipment and receiver.
- ▶ -Connect the equipment into an outlet on a circuit different from that to which the receiver is connected.
- ▶ -Consult the dealer or an experienced radio/TV technician for help.

## **Specific Absorption Rate (SAR) information:**

This A laptop meets the government's requirements for exposure to radio waves. The guidelines are based on standards that were developed by independent scientific organizations through periodic and thorough evaluation of scientific studies. The standards include a substantial safety margin designed to assure the safety of all persons regardless of age or health.

## **FCC RF Exposure Information and Statement**

The SAR limit of USA (FCC) is 1.6 W/kg averaged over one gram of tissue. Device types: A laptop (FCC ID: 2AFA3-V100) has also been tested against this SAR limit. The highest SAR value reported under this standard during product certification for use at the body is 0.296W/kg. This device was tested for typical body operations with the back of the handset kept 0mm from the body. To maintain compliance with FCC RF exposure requirements, use accessories that maintain a 0mm separation distance between the user's body and the back of the handset. The use of belt clips, holsters and similar accessories should not contain metallic components in its assembly. The use of accessories that do not satisfy these requirements may not comply with FCC RF exposure requirements, and should be avoided.