



# **UHF Transceiver**

## **TR700B**

INSTALLATION AND OPERATION GUIDE  
FOR SYSTEM OPERATORS



**VCom Inc.**  
(formerly WaveCom Electronics Inc.)

---

Proprietary to VCom Inc.

All rights reserved.

No part of this publication may be reproduced in any form or by any means or used to make any derivative work (such as translation, transformation or adaptation) without written permission from VCom Inc.

VCom Inc. reserves the right to revise this publication and to make changes in content from time to time without obligation on the part of VCom Inc. to provide notification of such revision or change.

VCom Inc. provides this guide without warranty of any kind, either implied or expressed, including, but not limited to, the implied warranties of merchantability and fitness for a particular purpose. VCom Inc. may make improvements or changes in the product(s) described in this manual at any time.

TR700B Manual; ml\_700B\_02 (March 2004); Approved: C.H.

*Specifications subject to change without notice — Printed in Canada*

VCom Inc.

TR700B Manual; ml\_tr700B\_02 (March 2004)

Approved: C.H.

## **Thank-you for purchasing this product and welcome to VCom!**

You have chosen an innovative solution from a leading technology design center in the ongoing TV & data delivery revolution.



**VCom Inc.**  
(formerly WaveCom Electronics Inc.)

No doubt you've been thinking that the future of your television delivery system includes new technologies such as **Digital TV, Internet Over Cable, Wireless Cable**. By selecting **VCom**, you are benefiting from the same design powerhouse that since 1988 has created custom RF and digital products for technology leaders such as AT&T, Cisco Systems, Cogeco, Comcast, and Cox Communications.

### **VCom designs and manufactures:**

✓Agile CATV Modulators	✓256 QAM Upconverters	✓Digital Video Modulators
✓Frequency Translators	✓Spread Spectrum Devices	✓Off-Air Demodulators
✓Video-On-Demand Products	✓Wireless Cable MMDS	✓Wireless Cable LMDS
✓Frequency Stackers	✓MMDS Transceivers	✓Satellite Receivers

and more! Designs to fill the market needs of the CATV industry – both foreign and domestic.

For additional product or corporate information, contact us:

On the web at:	<a href="http://www.vcom.com">www.vcom.com</a>
By sending email to:	<a href="mailto:sales@vcom.com">sales@vcom.com</a>
By telephone:	(306) 955-7075
By fax:	(306) 955-9919
By snail mail:	VCom Inc. 150 Cardinal Place Saskatoon, SK Canada S7L 6H7

### **VCom's Corporate Mandate**

is to be a leading worldwide designer and manufacturer of state-of-the-art communications equipment and components. Through the remarkable success of our customers and business partners, VCom innovations are achieving this goal.

## **SAFETY PRECAUTIONS**

1. Before installing and operating this equipment, read all Safety, Installation and Operating sections. Retain this manual for future reference.
2. Follow all instructions — Failure to do so may result in damage to the unit or severe personal injury.
3. Servicing should not be attempted by the user. There are no user serviceable parts inside. Refer all servicing to factory qualified personnel.
4. Shock Hazard — An electrical shock hazard exists when the chassis cover is removed as is required to set internal controls. Always disconnect power from the unit before removing the cover.
5. Cleaning — Do not use liquid or aerosol cleaners. Use a damp cloth for cleaning.

**Warning** Do not work on the system or connect or disconnect cables during periods of lightning activity.

**CAUTION:** To comply with FCC RF exposure requirements in section 1.1307, a minimum separation distance of 1.5 meters is required between this antenna and all persons.

## **LES PRÉCAUTIONS DE SÉCURITÉ**

1. Avant d'installer ou d'opérer cet équipement, lisez, toutes les sections de sécurités, d'installations et d'opérations. Gardez ce manuel comme source de référence.
2. Suivez toutes instructions - si non, vous risquez d'endommager la machine ou de vous blesser sérieusement.
3. N'essayez, pas de réparer cet équipement vous même. Référez toutes revisions nécessaire au personnel qualifié de la manufacture.
4. Risque de choc - Il y a un risque de décharge électrique qui existe quand la couverture du châssis est enlevée, comme est nécessaire pour ajuster les contrôles internes. Il faut toujours couper l'électricité avant d'enlever le couvercle pour faire aucun ajustage.
5. Le nettoyage - n'utilisez pas de nettoyeurs aérosols ou liquides. Utilisez un tissu humide pour nettoyer.

**Attention** Ne pas travailler sur le système ni brancher ou débrancher les câbles pendant un orage du foudre.



Important Installation Instructions

**CAUTION:** To comply with FCC RF exposure requirements in section 1.1307, a minimum separation distance of 1.5 meters is required between this antenna and all persons.

# **INDEX**

<b>1.0 GENERAL INFORMATION .....</b>	<b>6</b>
<b>1.1 Functional Overview .....</b>	<b>6</b>
<b>1.2 Module Features .....</b>	<b>6</b>
<b>1.3 Specifications.....</b>	<b>7</b>
<b>2.0 INSTALLATION .....</b>	<b>8</b>
<b>2.1 Unpacking the Unit .....</b>	<b>8</b>
<b>2.2 Mounting the Unit.....</b>	<b>8</b>
2.2.1 Mounting the TR700B .....	8
2.2.2 Mounting the Antenna.....	9
<b>2.3 Connection to the Antenna .....</b>	<b>9</b>
<b>2.4 Connection to the Power Inserter and Cable Modem.....</b>	<b>11</b>
<b>2.5 Waterproofing Connections .....</b>	<b>12</b>
<b>3.0 WARRANTY STATEMENT AND SERVICE POLICY .....</b>	<b>14</b>
<b>3.1 Warranty Statement.....</b>	<b>14</b>
<b>3.2 Service Policies: How to Return an Item for Service:.....</b>	<b>14</b>
<b>3.3 Repair Charges and Warranty Exemptions.....</b>	<b>15</b>

## **1.0 GENERAL INFORMATION**

### **1.1 Functional Overview**

The VCom **TR700B** is an UHF Transceiver for use in wireless systems. The TR700B integrates an LNA, upconverter, power amplifier, RF and IF diplexers to provide a one-box solution for two-way wireless RF communications. The TR700B and antenna are situated outdoors and connected to a cable modem indoors by standard RG-59 cable. A single RF connector on the weatherproofed enclosure provides the interface to the transmit/receive antenna for rapid setup. The Transceiver is configured to work with standard cable modem frequency plans and levels, permitting direct connection. The Transceiver also includes an RF mute function to reduce power consumption and broadband noise emissions.

### **1.2 Module Features**

- +24 dBm output for high reverse channel system gain
- Low Phase Noise
- Automatic transmit RF mute (transmits only when an IF signal is present)
- Fully weatherized unit, suitable for outdoor mounting

## 1.3 Specifications

### TRANSMITTER SPECIFICATIONS

IF Input Frequency	36-42 MHz (TR700B) 44.375-50.375 MHz (TR700B-IF1) 710-716 MHz
RF Output Frequency	
Linear Output Power +24 dBm at RF port	+27 dBm at RF port
Output P1dB	FCC CFR 47 Part 27.53
Spectral Mask	20 ± 2 dB at 23 °C
Gain	± 1.0 dB over 710-716 MHz
Gain Flatness (Frequency Response)	± 2.0 dB over -30 to +60 °C ambient
Gain Stability over Temperature	-87 dBc/Hz @ 10 kHz
Phase Noise	No spectral inversion
Spectral inversion	-45 dBm maximum
IF Level for RF Activation	<2 microseconds
RF Activation/Mute Response Time	

### RECEIVER SPECIFICATIONS

Frequency	740-746 MHz
Gain	24 ± 2 dB at 23 °C
Gain Flatness (Frequency Response)	± 1.0 dB over 740-746 MHz
Noise Figure	<5 dB typical, 6.0 dB maximum
Transmit-Receive Isolation	88 dB (see IF port spurious specification below)

### GENERAL

Frequency Stability	± 20 kHz (-30 to +60 °C)
Frequency Stability over time	< ±30 kHz over 10 years
RF Connector	F female, 75 ohms
IF Connector	F female, 75 ohms
Input/Output VSWR	2:1
DC Supply	+18 to 28 V, (+24V nominal), +10W
Operating Ambient Temperature	-30 to +60 °C
Size	6" x 8" x 0.9" (15.24 x 20.32 x 2.29 cm)
Mounting	Pole mount, 1" to 1.75" diameter pole

### RF PORT SPECIFICATIONS

RF Return Loss	Better than 9 dB in transmit and receive RF bands
RF Spurious Emissions	FCC CFR 47 Part 27

### IF PORT SPECIFICATIONS

IF Return Loss	Better than 10 dB over transmit and receive IF bands
IF Spurious Emissions	≤ -50 dBm from 100-860 MHz except 740-746 MHz ≤ -85 dBm, 740-746 MHz

Specifications subject to change without notice.

## 2.0 INSTALLATION

### 2.1 Unpacking the Unit

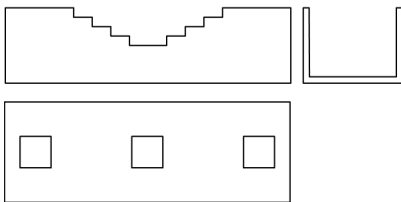
Carefully remove the equipment from its packing material and set it on a solid surface, such as a table or desk. If it appears damaged in any way, notify the carrier, and keep all packing materials for inspection by the carrier's agent.

### 2.2 Mounting the Unit

#### 2.2.1 Mounting the TR700B

The following hardware is included in the box for mounting the TR700B to the pole:

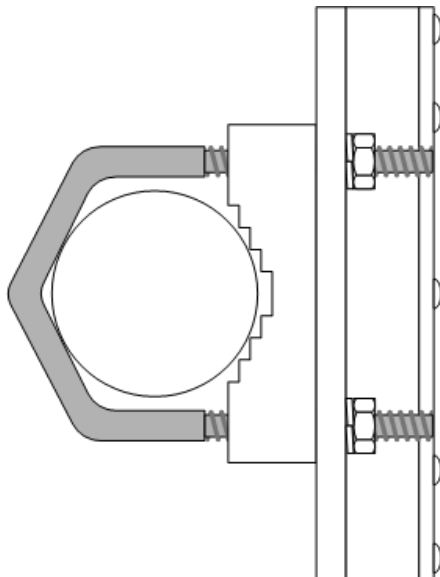
- 1 pole catch



- 1 V-bolt
- 2 1/4"x20 flange locknuts for connecting V-bolt and pole catch to the pole

The TR700B was designed for mounting to a pole with a diameter of 1.0" to 1.75". Please ensure that the pole used is attached securely to the building or other mounting location. Simply secure the TR700B unit to a pole as shown in Figure 2.2A with F-Connector on the bottom.

**DIAGRAM 2.2A: MOUNTING THE UNIT**



**Top View of TR700B  
Mounted to the Pole**



### **2.2.2 Mounting the Antenna**

Mount the antenna according to the manufacturer's instructions.

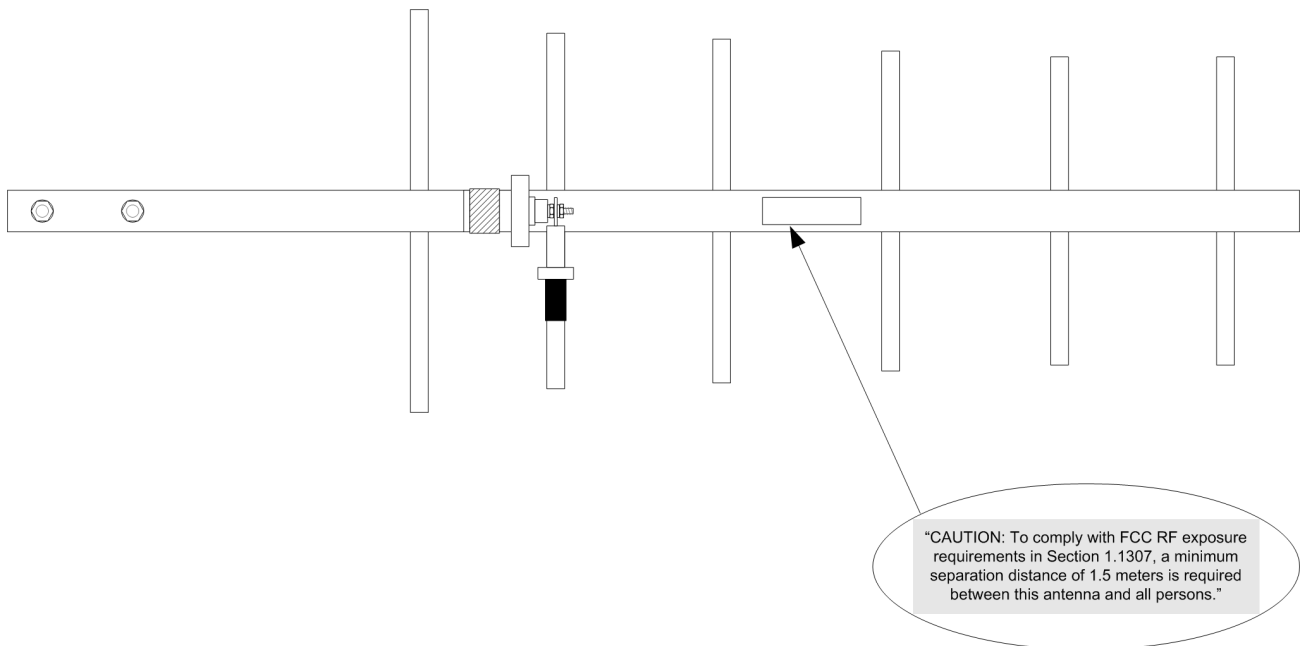
- ☐ The TR700B is intended for use with planar arrays and Yagi antennas. Please consult table 2.2B for further information.

- ☐ **Table 2.2B: Antenna List**

Transceiver Power		Antenna Type	Antenna Gain
[Watts]	[dBm]		
0.25	+24	Yagi	10 dBi
0.25	+24	Flat planar array	9 dBi
0.25	+24	Window mount planar array	7 dBi

- ☐ Included with the TR700B unit is a self-adhesive label for application to the antenna. To operate the TR700B in compliance with FCC regulations, you must apply the included label to the antenna. Peel off the protective backing from the label and affix it to the antenna such that the label is readable from a distance of 5 feet.

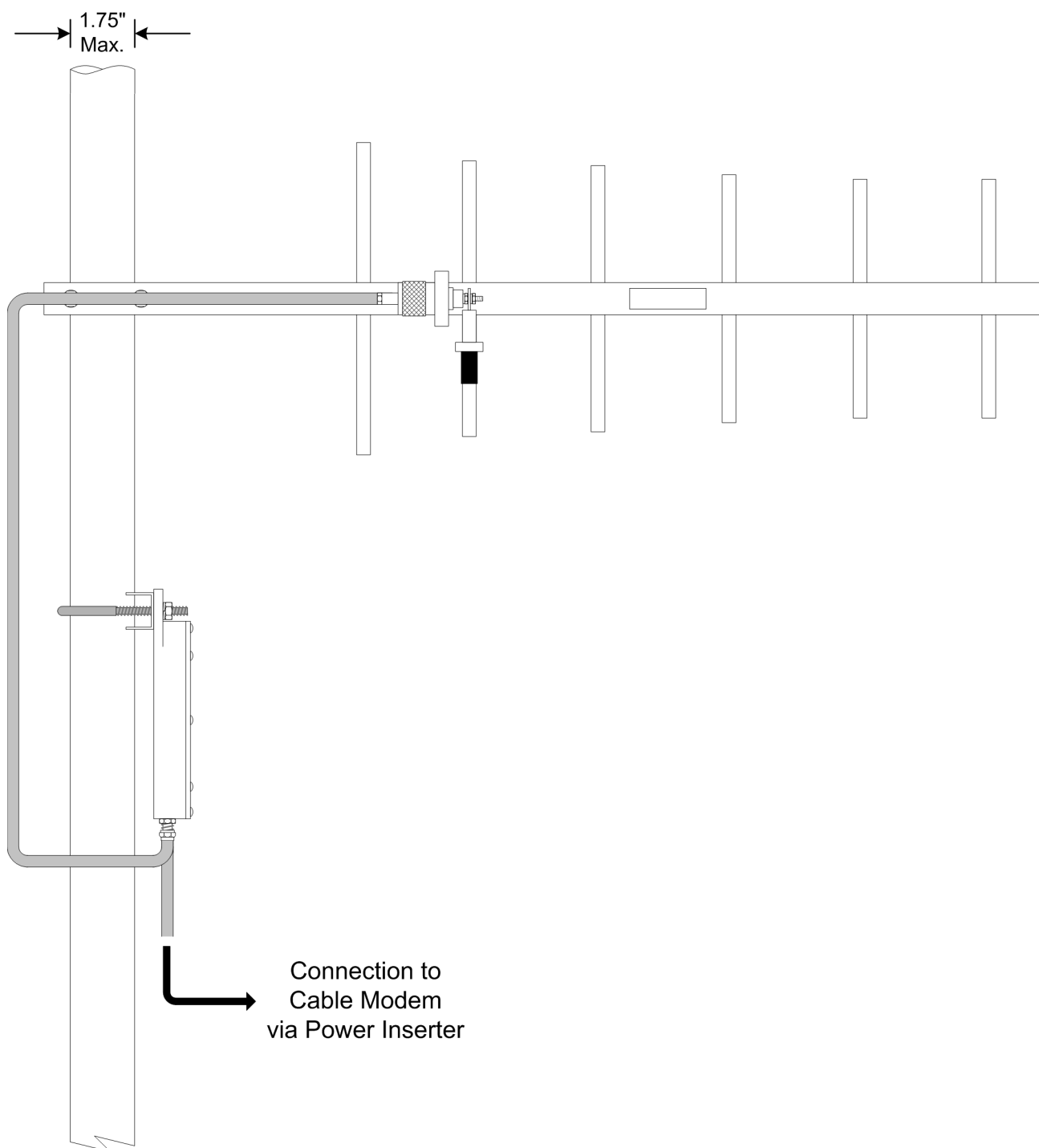
**DIAGRAM 2.2C: APPLYING THE SELF-ADHESIVE LABEL**



## 2.3 Connection to the Antenna

Connect the TR700B to the Antenna via the N-Connector

**DIAGRAM 2.3A: CONNECTION TO THE ANTENNA**



## 2.4 Connection to the Power Inserter and Cable Modem

Connect the TR700B F-Connector to the power inserter, located indoors with the cable modem. Connect the power inserter to the Cable Modem. If the TR700B is equipped with the optional self install feature, insure that the power inserter is connected to the Cable Modem, only after the antenna is aligned.

The power inserter has three connections:

DC POWER	Connect to wall adapter with RG-59 cable with F connectors
TO MODEM	Connect to cable modem (install modem only after the antenna is aligned)
TO TRANSCEIVER	Connect to TR700B

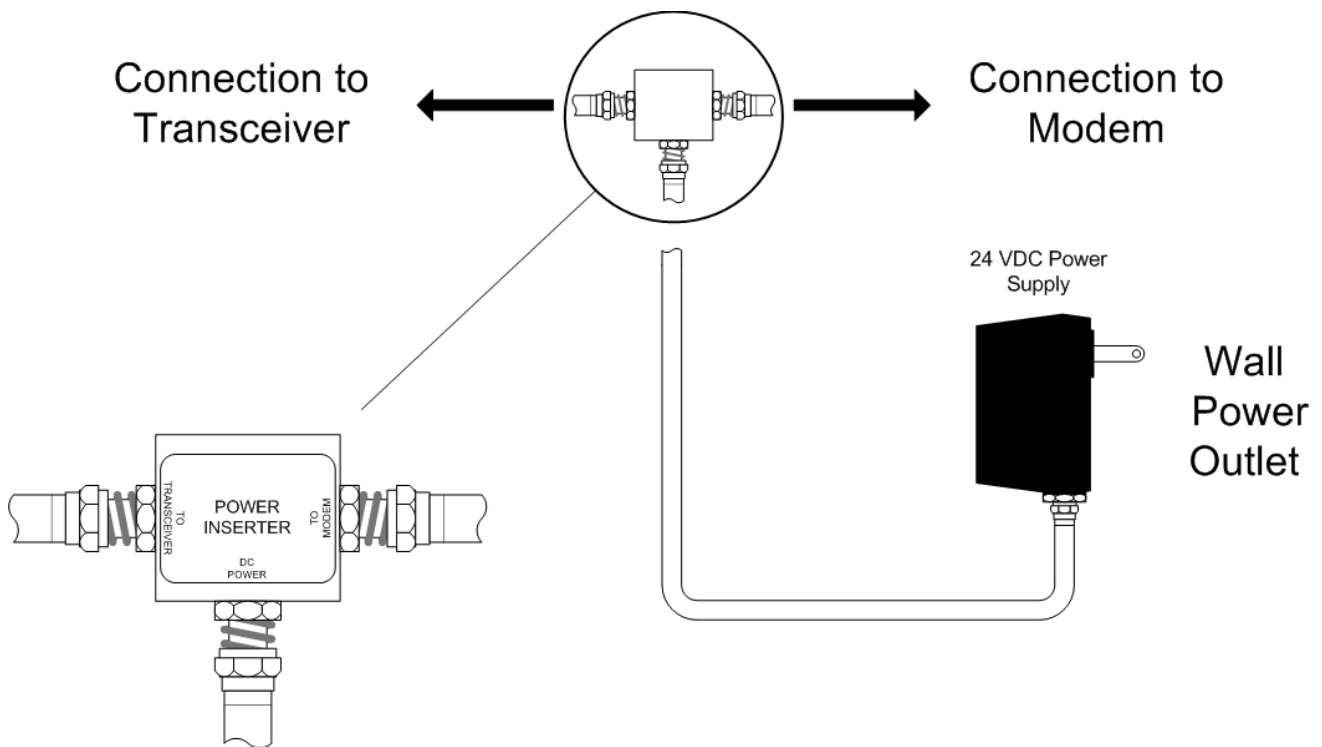
### WARNING!



If the power inserter is not connected correctly, the TR700B will not operate, and there is the potential to damage the cable modem.

Ensure that all wires and cables are hooked up before plugging into the AC adapter/power supply (i.e. hook up to the power supply last).

**DIAGRAM 2.4A: CONNECTION TO CABLE MODEM VIA POWER INSERTER**



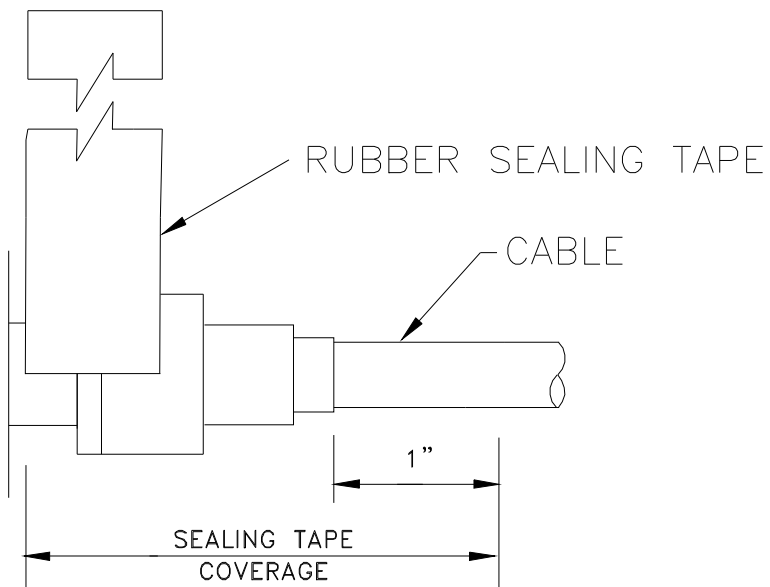
## 2.5 Waterproofing Connections

Many transceiver problems can be attributed to environmental conditions (including vibration), which can loosen cables and permit moisture to penetrate the connectors. It is highly recommended to seal the connectors using a technique similar to the one described below. This will provide moisture protection and keep the connections tight. For your convenience, VCom has provided two 6 inch lengths of rubber self-amalgamating sealing tape to use on the two connections of the TR700B. The diagrams below show the N connector, but the F connector also should be sealed using the same technique.

### STEP 1

Use one 6" section of rubber sealing tape. Starting at the TR700B end, stretch the tape and wrap it around the connector as close as possible to the wall of the TR700B. Overlap the tape by approximately one-half of its width so that it can form a seal with itself. Extend the wrapping to approximately one inch past the end of the connector.

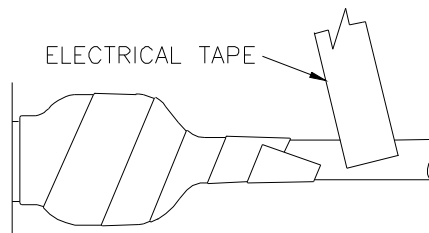
**DIAGRAM 2.5A: WATERPROOFING CONNECTION – STEP 1**



### STEP 2

Cover the sealing tape with electrical tape (not provided). Start approximately one inch further down the cable, and stretch the tape, overlapping by one-half. Wrap to the TR700B end and without breaking the tape, wrap back down to the cable end.

**DIAGRAM 2.5B: WATERPROOFING CONNECTION – STEP 2**



vCom inc.

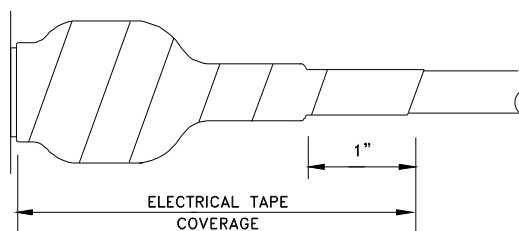
TR700B Manual; ml\_tr700B\_02 (March 2004)

Approved: C.H.

### STEP 3

When done, the connection should be tightly wrapped with tape, with a good seal to the cable.

**DIAGRAM 2.5C: WATERPROOFING CONNECTION – STEP 3**



## 3.0 WARRANTY STATEMENT AND SERVICE POLICY

### 3.1 Warranty Statement

VCom warrants its products to be free from defects in workmanship or materials for a period of two years. The warranty begins on the date of the original shipment from VCom to its customer. No claim may be allowed for expenses incurred in installation or use. No other expressed or implied warranties shall apply to the goods sold. VCom is not responsible for delayed shipments, other loss beyond VCom's control, or consequential damages of any kind arising in connection with the use of its products. This warranty is a return-to-factory warranty only. During the warranty period VCom will at its option, replace, repair or refund the price paid for any item which is returned for service. This warranty does not apply to units that have been physically or environmentally abused.

### 3.2 Service Policies: How to Return an Item for Service:

Before returning any item for service, an R.M.A. (Returned Material Authorization) number must be assigned by VCom. A unique R.M.A. number will be assigned for each item being returned. When requesting an R.M.A. number, please be prepared to provide the model, VCom serial number, original invoice number, your purchase order number and an adequate fault description. The serial number of a unit can be found on a barcode label similar to the one pictured below. R.M.A. service is available Monday to Friday from 8:30 a.m. to 4:30 p.m. CST (statutory holidays excepted).



To obtain an R.M.A. number you may:

**Call:** (306) 955-7075, press '0' for Operator, or '3' for Service Dept.

**Fax:** (306) 384-0086 — Attention: R.M.A. Request

**Email:** support@vcom.com

Once an R.M.A. number has been assigned, please refer to it in all correspondence and make certain that all applicable R.M.A. numbers are clearly marked on the outside of each package being returned. You must also ensure that each product is shipped to VCom in its original shipping container (or equivalent) via Prepaid carrier, with appropriate insurance and customs documentation (where required). VCom will not accept collect shipments, damaged shipments or shipments unaccompanied by an R.M.A. number.

**For items still under Warranty** – Items will be returned from VCom Inc. to its customer via prepaid ground carrier. The customer is responsible for any additional costs incurred, including custom clearance and duties. Any alternate means of shipment must be requested by the customer and will be subject to additional charges.

**For items no longer under Warranty** – Items will be returned from VCom Inc. to its customer via prepaid ground carrier at the customer's expense. The customer is responsible for any additional costs incurred, including custom clearance and duties. Any alternate means of shipment must be requested by the customer and will be subject to additional charges.

**Shipping Instructions will be provided by the repair center when the RMA number is sent to the customer.**

### **3.3 Repair Charges and Warranty Exemptions**

Items returned beyond the warranty period or items that do not qualify for warranty service are subject to additional out-of-warranty repair charges. Descriptions of these charges and warranty exemptions are below:

- 1) Repair turnaround time is typically 5-14 business days after receipt of the item at VCom. A Flat Rate Repair Charge will apply to all out-of-warranty items. Flat Rate Repair Charges are subject to change without notice.
- 2) Any faults due to customer error (ie - incorrect set-up or configuration settings) are subject to the current Test Fee and will be exempt from warranty.
- 3) Items returned with inadequate fault descriptions are subject to the current Test Fee and are exempt from warranty.
- 4) In the event that no fault is found, the item is subject to the current Test Fee and will be exempt from warranty.
- 5) Any product exhibiting external damage (either from shipping, improper handling or use) will be subject to inspection. If said damages are determined to be the cause of failure, the item will be exempt from warranty. All repairs to correct the external damage are subject to Time & Materials Charges (parts and labor at current rates).
- 6) Items with damage caused by unauthorized repairs or by external devices are subject to current out-of-warranty Flat Rate Repair Charges and are exempt from warranty.
- 7) All products returned for Factory Optioning are subject to the applicable current Option Charge plus Test Fee. Factory-optioned products carry the balance of the original warranty or a 90 day warranty, whichever is greater.

All out-of-warranty repairs must be approved by the customer in writing. No repairs will be made until the customer's Purchase Order or Out-Of-Warranty Repair Authorization is received.







**VCom Inc.**  
(formerly WaveCom Electronics Inc.)

150 Cardinal Place  
Saskatoon, Saskatchewan  
S7L 6H7  
Canada  
Tel: (306) 955-7075  
Fax: (306) 955-9919  
[www.vcom.com](http://www.vcom.com)  
[sales@vcom.com](mailto:sales@vcom.com)