



1.9 GHz Series
Broadband Wireless
Transceiver
TRI1819

INSTALLATION AND OPERATION GUIDE
FOR SYSTEM OPERATORS



Proprietary to VCom Inc.

All rights reserved.

No part of this publication may be reproduced in any form or by any means or used to make any derivative work (such as translation, transformation or adaptation) without written permission from VCom Inc.

VCom Inc. reserves the right to revise this publication and to make changes in content from time to time without obligation on the part of VCom Inc. to provide notification of such revision or change.

VCom Inc. provides this guide without warranty of any kind, either implied or expressed, including, but not limited to, the implied warranties of merchantability and fitness for a particular purpose. VCom Inc. may make improvements or changes in the product(s) described in this manual at any time.

TR1819 Manual; ml_tri1819_02 (Feb 2005); Approved: C.H.

Specifications subject to change without notice — Printed in Canada

**Thank-you for purchasing this product
and welcome to VCom!**



You have chosen an innovative broadband wireless solution from a leading technology design center in the ongoing TV & data delivery revolution.

No doubt you've been thinking that the future of your television delivery system includes new technologies such as **Digital TV, Internet Over Cable, Wireless Cable.** By selecting **VCom**, you are benefiting from the same design powerhouse that since 1988 has created custom RF and digital products for technology leaders such as AT&T, Cisco Systems, Cogeco, Comcast, and Cox Communications.

VCom designs and manufactures:

- ✓ Agile CATV Modulators
- ✓ Frequency Translators
- ✓ Off Air/CATV Demodulators
- ✓ Video On Demand Products
- ✓ 256 QAM Upconverters
- ✓ Spread Spectrum Devices
- ✓ Wireless Cable MMDS
- ✓ Digital Video Modulators
- ✓ MMDS Transceivers
- ✓ Wireless Cable LMDS

and more! Designs to fill the market needs of the CATV industry – both foreign and domestic.

For additional product or corporate information, contact us:

On the web at: www.vcom.com
By sending email to: sales@vcom.com
By telephone: (306) 955-7075
By fax: (306) 955-9919
By snail mail: VCom Inc.
150 Cardinal Place.
Saskatoon, SK Canada S7L 6H7

VCom's Corporate Mandate

is to be a leading worldwide designer and manufacturer of state-of-the-art communications equipment and components. Through the remarkable success of our customers and business partners, VCom innovations are achieving this goal.

SAFETY PRECAUTIONS

1. Before installing and operating this equipment, read all Safety, Installation and Operating sections. Retain this manual for future reference.
2. Follow all instructions — Failure to do so may result in damage to the unit or severe personal injury.
3. The user should not attempt servicing. There are no user serviceable parts inside. Refer all servicing to factory qualified personnel.
4. Shock Hazard — An electrical shock hazard exists when the chassis cover is removed as is required to set internal controls. Always disconnect power from the unit before removing the cover.
5. Cleaning — Do not use liquid or aerosol cleaners. Use a damp cloth for cleaning.

Warning Do not work on the system or connect or disconnect cables during periods of lightning activity.

LES PRÉCAUTIONS DE SÉCURITÉ

1. Avant d'installer ou d'opérer cet équipement, lisez, toutes les sections de sécurités, d'installations et d'opérations. Gardez ce manuel comme source de référence.
2. Suivez toutes instructions - si non, vous risquez d'endommager la machine ou de vous blesser sérieusement.
3. N'essayez, pas de réparer cet équipement vous même. Référez toutes revisions nécessaire au personnel qualifié de la manufacture.
4. Risque de choc - Il y a un risque de décharge électrique qui existe quand la couverture du châssis est enlevée, comme est nécessaire pour ajuster les contrôles internes. Il faut toujours couper l'électricité avant d'enlever le couvercle pour faire aucun ajustage.
5. Le nettoyage - n'utilisez pas de nettoyeurs aérosols ou liquides. Utilisez un tissu humide pour nettoyer.

Attention Ne pas travailler sur le système ni brancher ou débrancher les câbles pendant un orage ou du foudre.



Important Installation Instructions

CAUTION: To comply with FCC RF exposure requirements in section 1.1307, a minimum separation distance of 1.5 meters is required between this antenna and all persons.

INDEX

1.0 GENERAL INFORMATION	6
1.1 Functional Overview.....	6
1.2 Module Features	6
1.3 Specifications.....	7
2.0 INSTALLATION.....	8
2.1 Unpacking the Unit.....	8
2.2 Mounting the Unit.....	8
2.3 Connection to the Power Inserter and Cable Modem	12
2.4 Waterproofing Connections.....	13
3.0 ALIGNING THE ANTENNA.....	16
3.3.1 Signal Strength and Alignment	16
3.3.2 Resetting the Beeper	16
4.0 WARRANTY AND SERVICE POLICIES.....	17
4.1 Warranty Statement	17
4.2 Service Policies: How to Return an Item for Service:	17
4.3 Repair Charges and Warranty Exemptions.....	18

1.0 GENERAL INFORMATION

1.1 Functional Overview

The VCom TRI1819 is an outdoor RF transceiver for use in broadband wireless systems. The TRI1819 combines a low noise downconverter, high power upconverter, antenna and high rejection duplexer to offer a fully integrated solution for 1.9 GHz subscriber terminals. The TRI1819 integrated subscriber transceiver serves to frequency translate and amplify the upstream and downstream signals to the appropriate intermediate frequencies for use by the indoor DOCSIS modem. The TRI1819 and antenna are situated outdoors and connected to a cable modem indoors by a low cost 75 ohm cable (i.e. RG-59, RG-6 or similar). A single RF F-connector on the weatherproofed enclosure provides the interface to the transmit/receive antenna for rapid installation.

1.2 Module Features

- Output Power up to +33 dBm EIRP
- Automatic transmit RF mute when modem is not transmitting
- Low Noise: < 6 dB typical
- Digital temperature compensation to guarantee specifications over full operating temperature range
- All local oscillators are frequency synthesized and locked to a common internal high stability reference
- Integrated planar antenna (33° beamwidth, 15 dBi gain)
- High reliability, state-of-the-art design using microstrip, MMIC and surface mount technology
- Conservative component derating and 100% burn in help ensure reliable operation
- Fully weatherized unit, suitable for outdoor mounting
- Audible installation alignment beeper; to facilitate customer self install

1.3 Specifications

Subscriber Transceiver Specifications

TRANSMIT SPECIFICATIONS

IF Input Frequency	27 to 42 MHz
Automatic Mute Threshold Level	-47 dBm
Automatic Mute Response Time	< 2 microseconds
RF Frequency Range	1870 to 1885 MHz (Block B)
Rated Output Power	+33 dBm EIRP
Integrated Gain	30 dB \pm 1 dB
Gain Stability	\pm 2 dB over temperature (-45 to +55°C)
Spectral Mask	FCC CFR 47 Part 24
Phase Noise	<-85 dBc / Hz at 10 kHz <-45 dBc integrated over 20 kHz to 2.5 MHz
Frequency Setting and Stability	\pm 5.5 kHz
Frequency Stability over 10 years	\pm 15 kHz

RECEIVE SPECIFICATIONS

RF Frequency Range	1950 to 1965 MHz (Block B)
Frequency Response (any 6 MHz band)	\pm 0.5 dB
IF Output Frequency Range	227 to 242 MHz
Noise Figure	<6.0 dB typical
Integrated Gain	41 dB
Input Third Order Intercept Point	-10 dBm at LNA input
Phase Noise	<-85 dBc / Hz at 10 kHz <-45 dBc integrated over 20 kHz at 2.5 MHz
Frequency Setting and Stability	\pm 5.5 kHz
Frequency Stability over 10 years	\pm 15 kHz

GENERAL

IF Connector	F female, 75 ohms
IF Return Losses	>10 dB
Power Requirement	+10.8 to +28 VDC
Power Consumption	12 W maximum
Operating Temperature Range	-45 to +55°C
Mounting	Pole Mount (1" to 1.75" (25mm to 44mm) diameter)
Antenna Gain	15 dBi
Antenna Beamwidth	33° typical
Dimensions	12" x 12" x 3" (305mm x 305mm x 75 mm) maximum
Weight	6 lbs. (2.7 kg)

Specifications subject to change without notice.

2.0 INSTALLATION

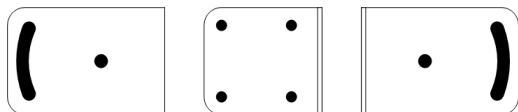
2.1 Unpacking the Unit

Carefully remove the equipment from its packing material and set it on a solid surface, such as a table or desk. If it appears damaged in any way, notify the carrier, and keep all packing materials for inspection by the carrier's agent.

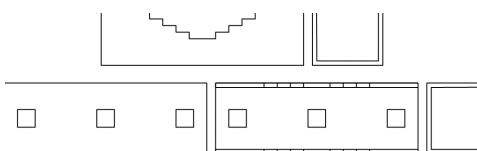
2.2 Mounting the Unit

The following hardware is included in the box for mounting the brackets to the pole:

- 1 L-bracket (taped to one of the foam pieces inside the box)



- 1 pole catch



- 1 V-bolt
- 4 #10-32 flange locknuts for connecting L-bracket to cover
- 2 ¼ - 20 flange locknuts for connecting V-bolt and pole catch to the pole

The TRI1819 was designed for mounting on a pole with a diameter of 1.0" to 1.75". Please ensure that the pole used is attached securely to the building or other mounting location.

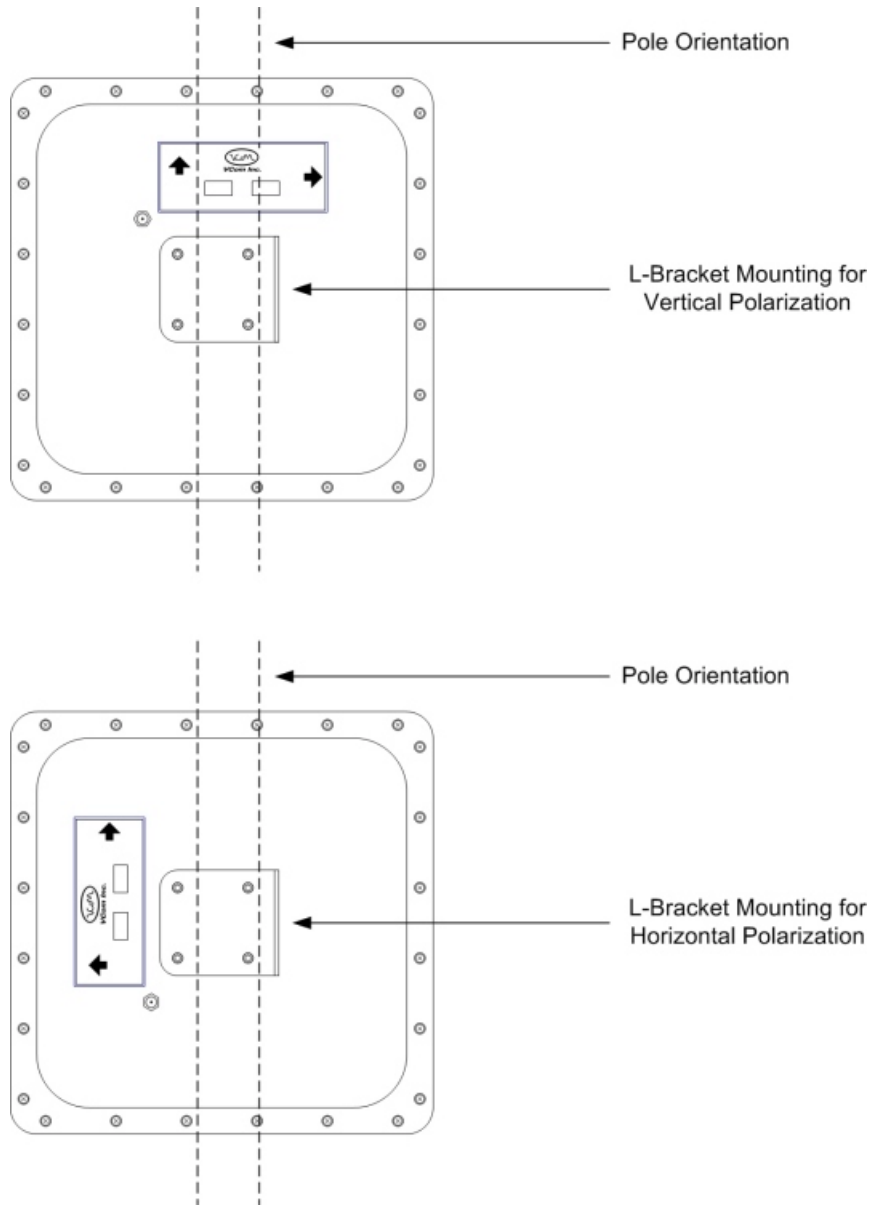
Step 1 – Attach L-Bracket to TRI1819

Before the unit can be attached to the pole, the L-bracket must be attached in the correct orientation according to the polarization required for the particular customer installation. Diagram 2.2A shows the orientation of the bracket relative to the cover for both horizontal and vertical polarization.

The active or desired polarization is the one in which the arrow points up. For example, when the TRI1819 is mounted on the pole, if the arrow pointing up on the back of the TRI1819 says "Horizontal Polarization" then the horizontal polarization is the active polarization. When the TRI1819 is mounted on the pole, if the arrow pointing up on the back of the TRI1819 says "Vertical Polarization", the vertical polarization is the active polarization.

Secure the L-bracket to the cover using the #10-32 locknuts.

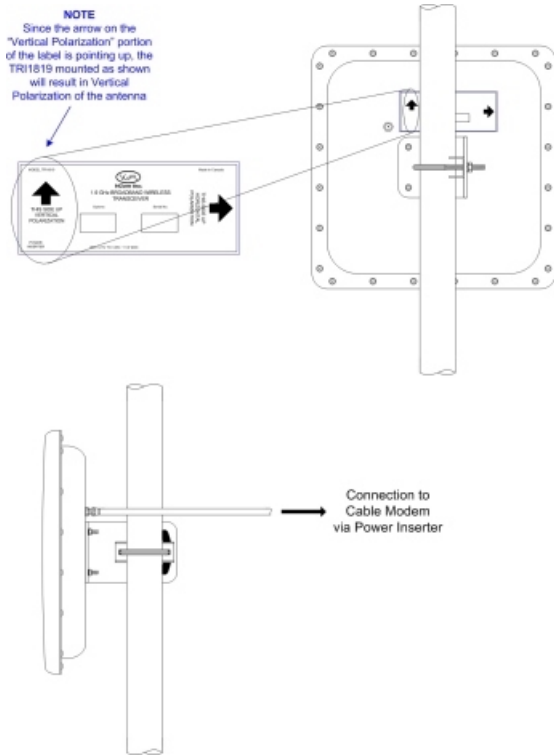
DIAGRAM 2.2A: L-BRACKET ORIENTATION



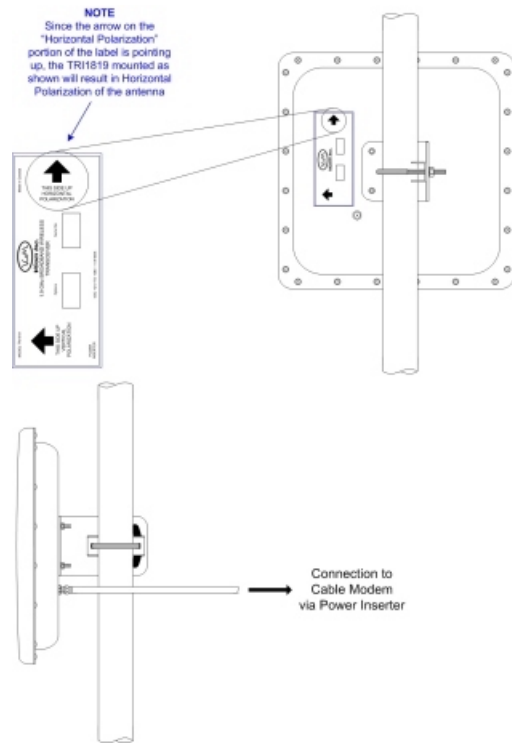
Once the L-bracket is in place, the unit can be mounted to the pole. The pole catch, V-bolt and L-bracket are oriented as shown in Diagram 2.2B.

DIAGRAM 2.2B: TRI1819 MOUNTED TO POLE

Horizontal Alignment

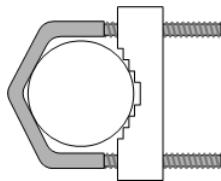


Vertical Alignment



STEP 2 – Position V-bolt and pole catch around pole

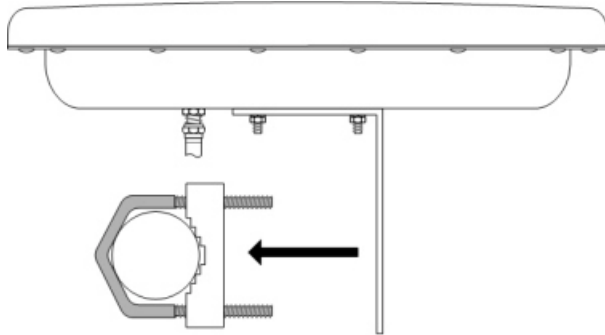
To attach the TRI1819 to the pole, first position the pole catch over the threads of the V-bolt and hold against the pole with one hand.



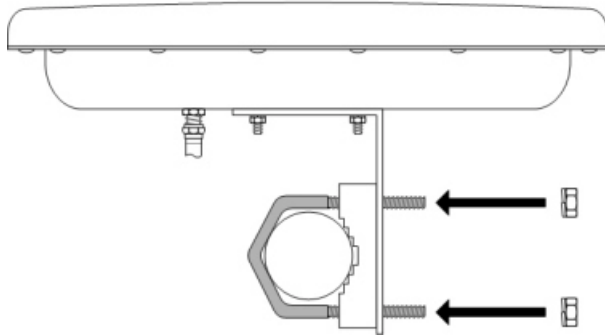
Hold V-Clamp and Pole Catch on Pole as shown

STEP 3 – Position TRI1819 against pole

Using the other hand, bring the TRI1819 up to the pole catch and grab V-bolt, pole catch and L-bracket in a single hand. Ensure that the pole is inside the “L” of the L-bracket and not on the outside of the L. This is necessary to maintain antenna alignment during high winds.



Mount TRI1819 Unit on Pole as shown



Fasten Bolts as shown

STEP 4 – Tighten TRI1819 against pole

Tighten both ¼” locknuts against the L-bracket so that the unit is held against the pole but can still be rotated and tilted up and down for antenna alignment. The locknut closest to the antenna can be tightened almost all the way while the back one should be approximately finger tight.

2.3 Connection to the Power Inserter and Cable Modem

Connections to the TRI1819 are made as shown in Diagrams 2.2B and either 2.3A or 2.3B depending on which power supply and inserter came with the TRI1819.

Please note:

- 1) Connect the TRI1819 F-Connector to the power inserter, located indoors with the cable modem. The power inserter is then connected to the Cable Modem, **only after the antenna is aligned**. The power inserter has three connections:

DC POWER	Connect to wall adapter with the supplied RG-59 cable with F connectors
TO MODEM	Connect to cable modem (install modem only after the antenna is aligned)
TO TRANSCEIVER	Connect to TRI1819

WARNING!



If the power inserter is not correctly connected, the TRI1819 will not operate, and there is the potential to damage the cable modem.

Ensure that all wires and cables are hooked up before plugging into the AC adapter/power supply (i.e. hook up to the power supply last).

- 2) After connection, the F connector **must** be waterproofed with the supplied rubber sealing tape. See Section 2.4 for details.

DIAGRAM 2.3A: CONNECTION TO CABLE MODEM VIA POWER INSERTER USING PS24V750MA-01

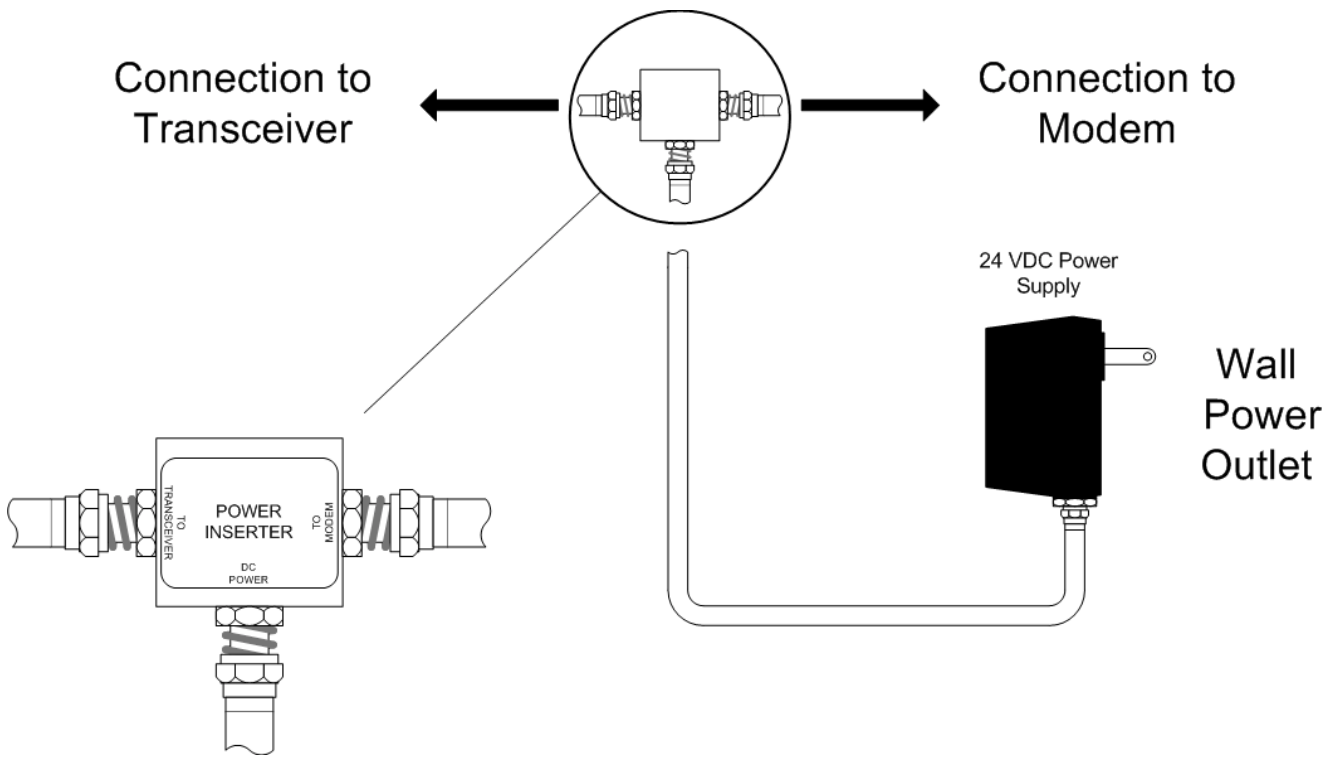
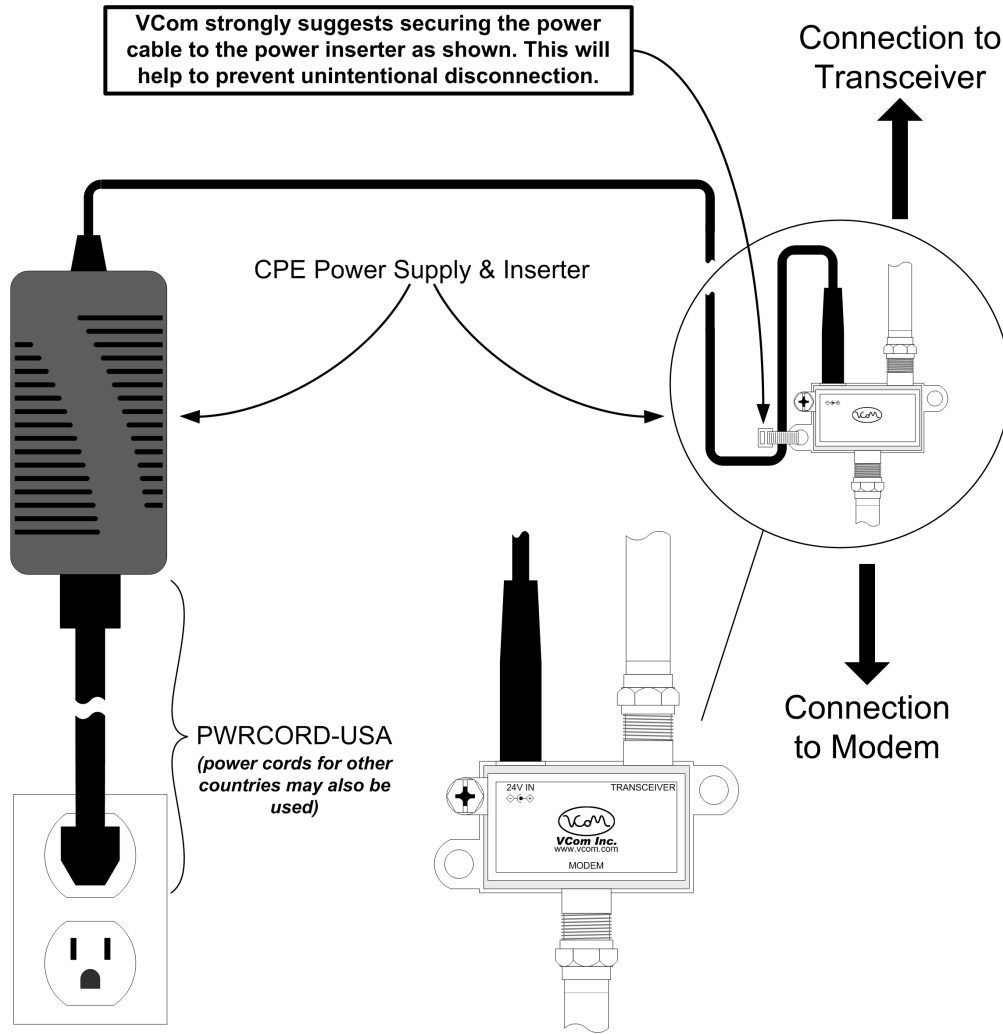


DIAGRAM 2.3B: CONNECTION TO CABLE MODEM VIA POWER INSERTER USING CPE POWER SUPPLY & INSERTER

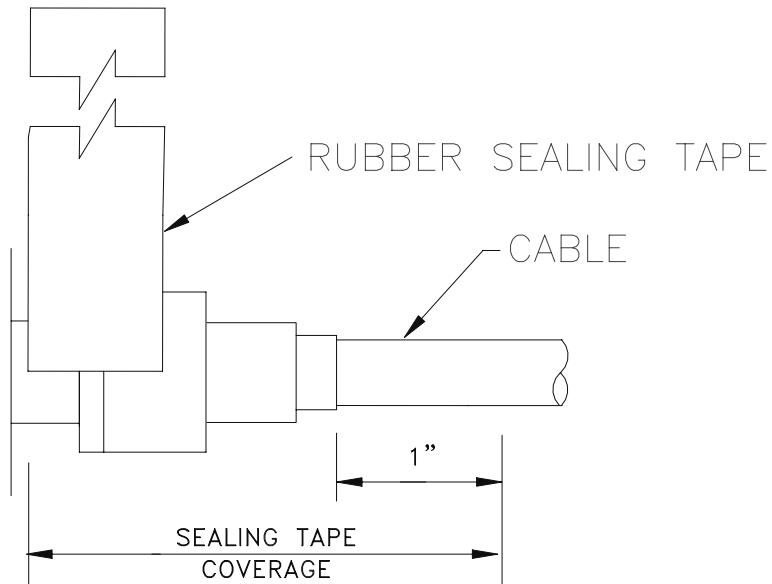


2.4 Waterproofing Connections

This will provide moisture protection and keep the connections tight. VCom has provided a 6-inch length of rubber self-amalgamating sealing tape to use on the TRI1819 F-connector.

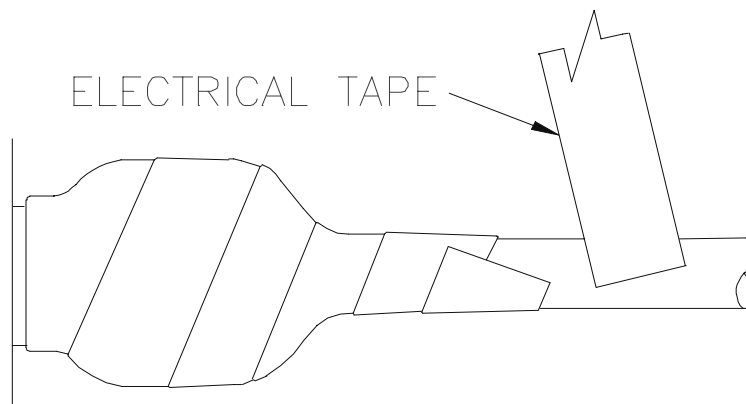
Step 1

Use a 6" section of rubber sealing tape. Starting at the TRI1819 end, stretch the tape and wrap it around the connector as close as possible to the wall of the TRI1819. Overlap the tape by approximately one-half of its width so that it can form a seal with itself. Extend the wrapping to approximately one-inch past the end of the connector.

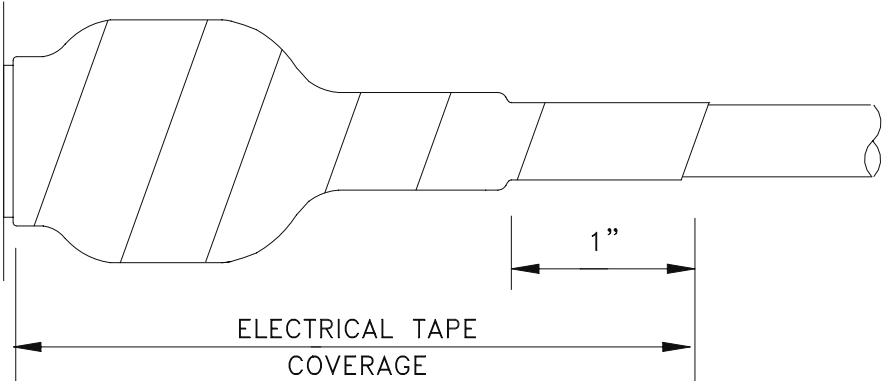


Step 2

Cover the sealing tape with electrical tape (not provided). Start approximately one inch further down the cable, and stretch the tape, overlapping by one-half. Wrap to the TRI1819 end and without breaking the tape, wrap back down to the cable end.



When done, the connection should be tightly wrapped with tape, with a good seal to the cable.



3.0 ALIGNING THE ANTENNA

3.3.1 Signal Strength and Alignment

When power is first applied an audible signal (beep) will occur. Faster beeping indicates higher signal strength. Adjust the unit first panning left and right, then up and down until the rate of beeping is maximized. If the unit is difficult to tilt or turn, loosen the locknuts on the V-bolts slightly.

If the beep rate is very quick, the beeps will continue to be heard for ~3mins and then stop. This quick beep rate indicates that very little movement is necessary. If the beep rate is slow, the beep will occur for 20 minutes at minimum signal strength of less than -80 dBm. This slow beep rate indicates that more movement is required.

Once antenna alignment is complete, tighten the locknuts to secure the TRI1819 to the pole.

3.3.2 Resetting the Beeper

To reset the timer for alignment, simply unplug the power supply from its AC connection. Wait 5 seconds, then plug the power supply back into its AC connection. The beeper will begin beeping as soon as power is available.

4.0 WARRANTY AND SERVICE POLICIES

4.1 Warranty Statement

VCom warrants its products to be free from defects in workmanship or materials for a period of two years. The warranty begins on the date of the original shipment from VCom to its customer. No claim may be allowed for expenses incurred in installation or use. No other expressed or implied warranties shall apply to the goods sold. VCom is not responsible for delayed shipments, other loss beyond VCom's control, or consequential damages of any kind arising in connection with the use of its products. This warranty is a return-to-factory warranty only. During the warranty period VCom will at its option, replace, repair or refund the price paid for any item which is returned for service. This warranty does not apply to units that have been physically or environmentally abused.

4.2 Service Policies: How to Return an Item for Service:

Before returning any item for service, an R.M.A. (Returned Material Authorization) number must be assigned by VCom. A unique R.M.A. number will be assigned for each item being returned. When requesting an R.M.A. number, please be prepared to provide the model, VCom serial number, original invoice number, your purchase order number and an adequate fault description. The serial number of a unit can be found on a barcode label similar to the one pictured below. R.M.A. service is available Monday to Friday from 8:30 a.m. to 4:30 p.m. CST (statutory holidays excepted).



To obtain an R.M.A. number you may:

Call: (306) 955-7075, press '0' for Operator, or '3' for Service Dept.

Fax: (306) 384-0086 — Attention: R.M.A. Request

Email: support@vcom.com

Once an R.M.A. number has been assigned, please refer to it in all correspondence and make certain that all applicable R.M.A. numbers are clearly marked on the outside of each package being returned. You must also ensure that each product is shipped to VCom in its original shipping container (or equivalent) via Prepaid carrier, with appropriate insurance and customs documentation (where required). VCom will not accept collect shipments, damaged shipments or shipments unaccompanied by an R.M.A. number.

For items still under Warranty – Items will be returned from VCom Inc. to its customer via prepaid ground carrier. The customer is responsible for any additional costs incurred, including custom clearance and duties. Any alternate means of shipment must be requested by the customer and will be subject to additional charges.

For items no longer under Warranty – Items will be returned from VCom Inc. to its customer via prepaid ground carrier at the customer's expense. The customer is responsible for any additional costs incurred, including custom clearance and duties. Any alternate means of shipment must be requested by the customer and will be subject to additional charges.

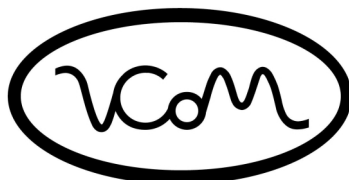
Shipping Instructions will be provided by the repair center when the RMA number is sent to the customer.

4.3 Repair Charges and Warranty Exemptions

Items returned beyond the warranty period or items that do not qualify for warranty service are subject to additional out-of-warranty repair charges. Descriptions of these charges and warranty exemptions are below:

- 1) Repair turnaround time is typically 5-14 business days after receipt of the item at VCom. A Flat Rate Repair Charge will apply to all out-of-warranty items. Flat Rate Repair Charges are subject to change without notice.
- 2) Any faults due to customer error (i.e. - incorrect set-up or configuration settings) are subject to the current Test Fee and will be exempt from warranty.
- 3) Items returned with inadequate fault descriptions are subject to the current Test Fee and are exempt from warranty.
- 4) In the event that no fault is found, the item is subject to the current Test Fee and will be exempt from warranty.
- 5) Any product exhibiting external damage (either from shipping, improper handling or use) will be subject to inspection. If said damages are determined to be the cause of failure, the item will be exempt from warranty. All repairs to correct the external damage are subject to Time & Materials Charges (parts and labor at current rates).
- 6) Items with damage caused by unauthorized repairs or by external devices are subject to current out-of-warranty Flat Rate Repair Charges and are exempt from warranty.
- 7) All products returned for Factory Optioning are subject to the applicable current Option Charge plus Test Fee. Factory-optioned products carry the balance of the original warranty or a 90 day warranty, whichever is greater.

All out-of-warranty repairs must be approved by the customer in writing. No repairs will be made until the customer's Purchase Order or Out-Of-Warranty Repair Authorization is received.



VCom[®] Inc.
www.vcom.com

Advanced Broadband Products

150 Cardinal Place
Saskatoon, Saskatchewan
S7L 6H7
Canada
Tel: (306) 955-7075
Fax: (306) 955-9919
www.vcom.com
sales@vcom.com