

Bluetooth Vista Remote Control

This Bluetooth remote control VR-1000 is designed to manage PCs running Windows Vista operation system. It's one of the smartest wireless solutions using the latest Bluetooth technology that doesn't need line-of-sight to control PC functions. You may navigate it cordlessly at a distance up to 10 meters (33 feet) from your PC or laptops. It can be used with any desktop or portable computer with a built-in Bluetooth module or an external USB Bluetooth adapter.

Package Contents

- Bluetooth Remote Control
- 2pcs AAA Alkaline Batteries
- Quick Start Guide

System Requirements

- Windows Vista Home Premium, Vista Ultimate
- 1GHz 16/32 bit CPU
- 1GB RAM
- Embedded Bluetooth Function

Getting Started

1. Battery Installation

Step 1: Remove the battery compartment cover from the back of the Bluetooth Remote Control.

Step 2: Insert 2 AAA batteries, matching the polarity symbols (and) marked inside.

Step 3: Push the cover back till you hear a click.

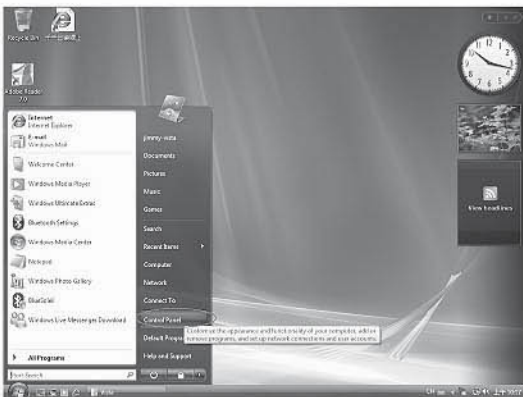
Battery Notes:

- Dispose of old batteries promptly and properly.
- Do not burn or bury batteries.
- Use only fresh batteries of the required size and recommended type (AAA, Alkaline 1.5V).
- Do not mix old and new batteries, different types of batteries (standard, alkaline, or rechargeable), or rechargeable batteries of different capacities.
- Batteries can leak chemicals that may destroy electronic parts. If you do not plan to use the Bluetooth Remote Control for more than two weeks, remove the batteries.

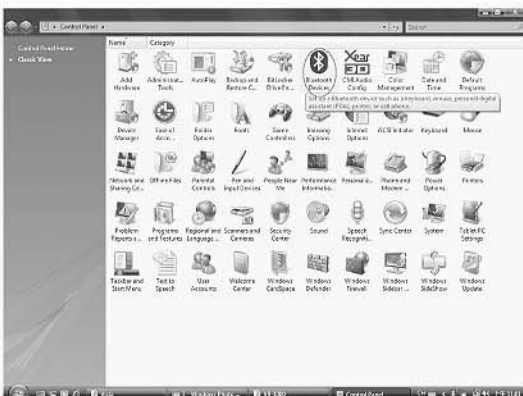
2. Pairing The Device to Your PC or Notebook

Step 1: Turn on the Bluetooth function of PC or notebook. If the PC or notebook does not support Bluetooth, you need a Bluetooth USB adapter. Please follow the on-screen instruction for software installation before plug in the Bluetooth USB adapter.

Step 2: Open the Bluetooth program from the control panel.



Step 3: Double click the Bluetooth Device icon.

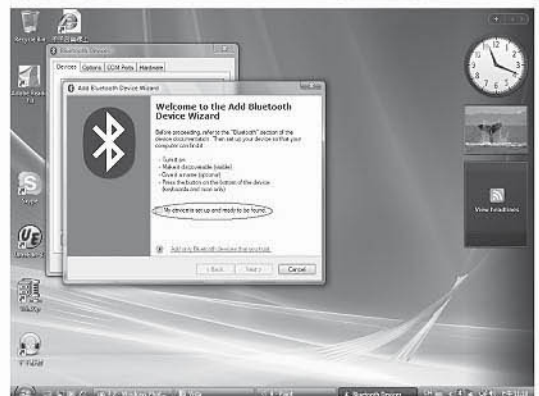
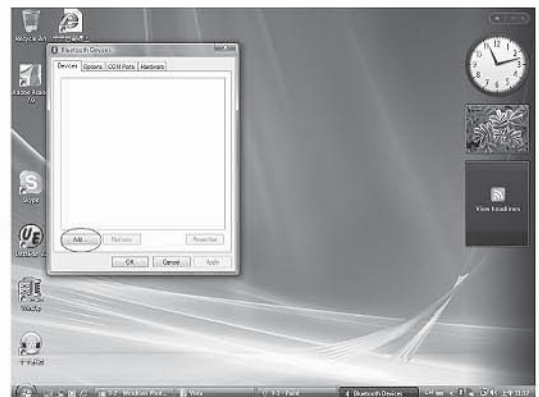


Or Double click the Bluetooth icon on right/lower corner.



Step 4: Press the Up and Down buttons together of the Remote Control for 2 seconds, the RED LED indicator will turn on for seconds and Turn off. The Remote Control is ready for pairing within 5 minutes. Without being paired within 5 minutes, the Remote Control will be in standby mode. You have to press the Up and Down buttons for pairing again.

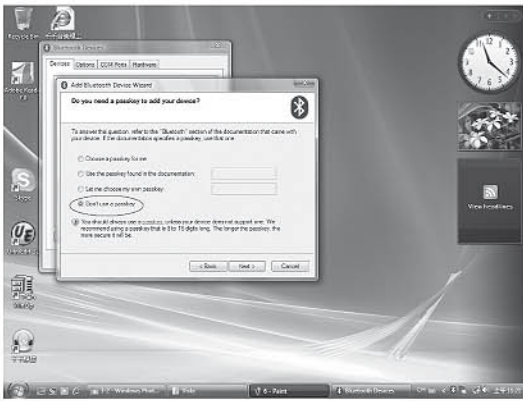
Step 5: Add new Bluetooth device at Bluetooth program.



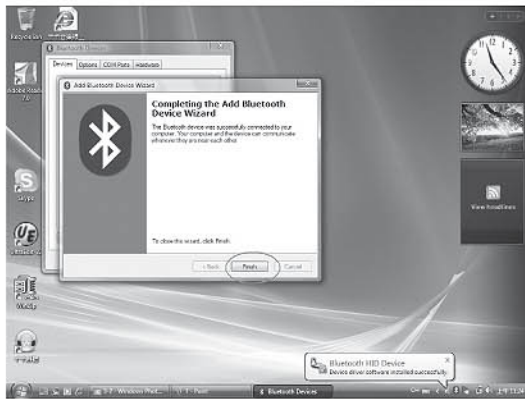
Step 6: Double click the device named "Vista Bluetooth Remote Control".



Step 7: Select "No Passkey Require".



Step 8: Pairing Finished



RF Emissions Information

CE

This device has been tested and found to comply with the requirements set up in the council directive on the approximation of the law of member states relating to EMC Directive 89/336/EEC, Low Voltage Directive 73/23/EEC and R&TTE Directive 99/5/EC.

FCC

This equipment has been tested and found to comply with the limits for a Class B digital device, pursuant to Part 15 of the FCC Rules. These limits are designed to provide reasonable protection against harmful interference in a residential installation. This equipment generates, uses, and can radiate radio frequency energy and, if not installed and used in accordance with the instructions, may cause harmful interference to radio communications. However, there is no guarantee that interference will not occur in a particular installation. If this equipment does cause harmful interference to radio or television reception, which can be determined by turning the equipment off and on, the user is encouraged to try to correct the interference by one or more of the following measures:

- Reorient or relocate the receiving antenna.
 - Increase the separation between the equipment and receiver.
 - Connect the equipment into an outlet on a circuit different from that to which the receiver is connected.
 - Consult your local dealer or an experienced radio/TV technician for help.
- You are cautioned that changes or modifications not expressly approved by the party responsible for compliance could void your authority to operate the equipment.

This device complies with Part 15 of the FCC Rules. Operation is subject to the following two conditions: (1) This device may not cause harmful interference, and (2) This device must accept any interference received, including interference that may cause undesired operation.



Low Battery

If the Remote Control does not function after pressing buttons, and the Green LED indicator does not flash, it might be because the device is running low on battery. Please change the batteries accordingly.
(Note: The next version will add low battery indication function. When battery is low, the Red LED will flash instead as buttons being pressed.)

Function Keys

All the functions are designed to follow the definition of Windows Vista Media Center Player. For all detail function of each button, please check the user's manual of Windows Vista Media Center Player.

