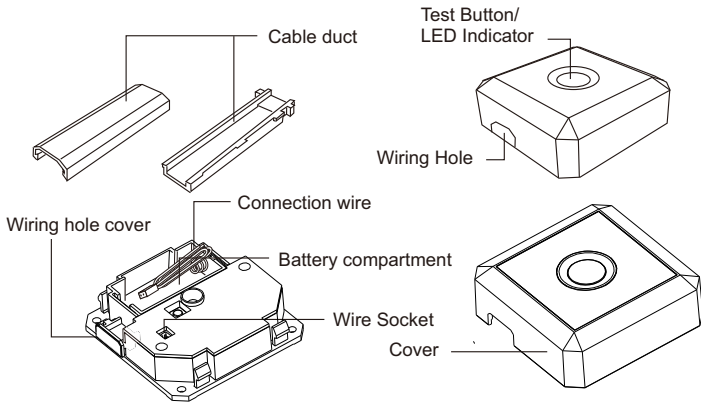


## Parts & Function

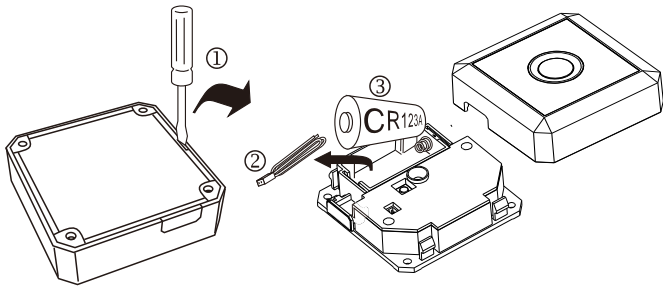


## Power

This unit using a long life battery CR123A.

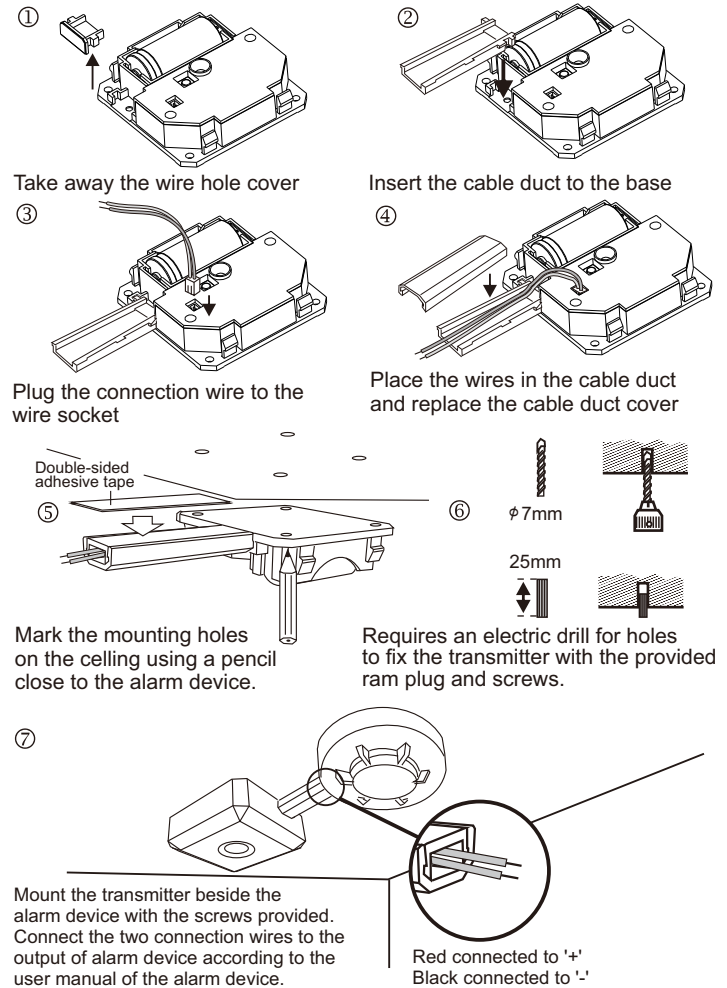
## Battery installation

1. Open the front cover using a small flat screw driver
2. Take out the connection wire in the battery compartment.
3. Install a CR123A battery to the battery compartment



1

## Installation



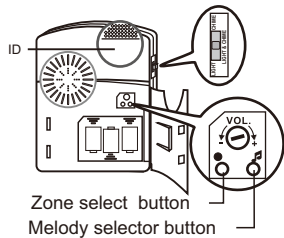
Mount the transmitter beside the alarm device with the screws provided. Connect the two connection wires to the output of alarm device according to the user manual of the alarm device.

Red connected to '+'  
Black connected to '-'

2

## CODE PAIRING & MELODY SELECTION

- Step 1: Insert battery to the transmitter to be used.
- Step 2: Insert batteries to the receiver to be used (chime unit).
- Step 3: Enter pairing mode for receiver (chime unit). Press and hold the **Zone Select** button for 3 seconds. The LED #1 will flash.
- Step 4: Press the **Zone Select** button again to move to the zone you wish to pair with. Press the **Melody selector** button to scroll through the melodies. Once you hear your preferred melody, do not press again as it is now selected.
- Step 5: Once the zone and melody are selected, press the test button on the transmitter once to pair. If successful, the receiver (chime) will generate a short tone. Press the button to exit pairing mode, the system is ready to use.



To stop the Chime whilst it is alerting press the reset button

## Test the transmitter

To test the transmitter, press the test button once. the LED indicator will lit and will send a trigger signal to the receiver.

**Recommended test the transmitter once a month**

## Test the connection

To test the connection between the transmitter and smoke alarm, press the test button on the smoke alarm. the LED indicator on the transmitter will lit and will send a trigger signal to the receiver.

## Battery low indication

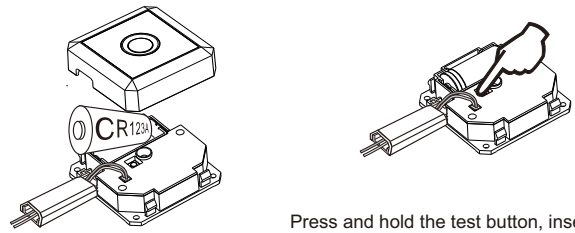
Once the transmitter unit detect battery voltage is low, the LED indicator will blink every 10 second. If the transmitter is activated, The battery low information will be sent to the receiver for display.



3

## Code Conflict

If the transmitter coding is the same as another transmitter you must change the code. When you have changed the code re-pair the transmitter is needed.

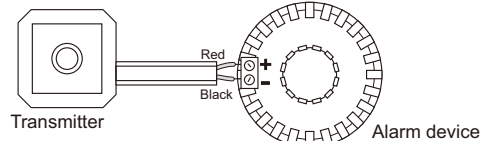


Open the cover  
Remove the battery

Press and hold the test button, insert the battery whilst holding the button for 5 seconds. The LED will flash 5 times when a new code is generated

## Remark:

This relay transmitter can work any devices with 3 to 9V output relay terminal. Assume to connect with alarm device has built-in output terminal with 3 to 9 volt output when the alarm device is activated.



Connection wire needs correct with right polarity, wrong connection will cause the transmitter does not work.

## FCC Statement:

This equipment has been tested and found to comply with the limits for a Class B digital device, pursuant to part 15 of the FCC Rules. These limits are designed to provide reasonable protection against harmful interference in a residential installation. This equipment generates, uses and can radiate radio frequency energy and, if not installed and used in accordance with the instructions, may cause harmful interference to radio communications. However, there is no guarantee that interference will not occur in a particular installation. If this equipment does cause harmful interference to radio or television reception, which can be determined by turning the equipment off and on, the user is encouraged to try to correct the interference by one or more of the following measures:

- \* Reorient or relocate the receiving antenna.
- \* Increase the separation between the equipment and receiver.
- \* Connect the equipment to an outlet on a circuit different from that to which the receiver is connected.

This device complies with part 15 of the FCC rules. Operation is subject to the following two conditions: (1) This device may not cause harmful interference, and (2) this device must accept any interference received, including interference that may cause undesired operation.

**Note: Modifications to this product will void the user's authority to operate this equipment.**

4