

# verykool I123 User Guide

<b>Document Name</b>	I123		
<b>Document No.</b>	UM-GW-AL-128(E)	<b>Department for Editing</b>	Technology Management Department
<b>Version</b>	V1.0	<b>Prepared By</b>	Xi Wang
<b>Security Class</b>	Confidential	<b>Effective Date</b>	2012-04-13

verykool USA INC.

# Revision History

Date	Editor	Revision Items	Version	Verified by	Approved by
2012-04-13	Xi Wang	Initial version	1.0		

---

Any Changes or modifications not expressly approved by the party responsible for compliance could void the user's authority to operate the equipment.

This device complies with part 15 of the FCC Rules. Operation is subject to the following two conditions: (1) This device may not cause harmful interference, and (2) this device must accept any interference received, including interference that may cause undesired operation.

Note: This equipment has been tested and found to comply with the limits for a Class B digital device, pursuant to part 15 of the FCC Rules. These limits are designed to provide reasonable protection against harmful interference in a residential installation. This equipment generates uses and can radiate radio frequency energy and, if not installed and used in accordance with the instructions, may cause harmful interference to radio communications. However, there is no guarantee that interference will not occur in a particular installation. If this equipment does cause harmful interference to radio or television reception, which can be determined by turning the equipment off and on, the user is encouraged to try to correct the interference by one or more of the following measures:

- Reorient or relocate the receiving antenna.
- Increase the separation between the equipment and receiver.
- Connect the equipment into an outlet on a circuit different from that to which the receiver is connected.
- Consult the dealer or an experienced radio/TV technician for help.

# Table of Contents

<b>1</b>	<b>PHONE APPEARANCE AND KEYS</b> .....	<b>1</b>
1.1	Physical Impression .....	1
1.2	Keys specification .....	1
1.3	Icons .....	2
<b>2</b>	<b>USER GUIDE</b> .....	<b>2</b>
2.1	Installing the battery .....	2
2.2	Charging the battery .....	2
2.3	Inserting the SIM card .....	2
2.4	Installing T-Flash card .....	3
2.5	Power On or Off .....	3
<b>3</b>	<b>CALL FUNCTIONS</b> .....	<b>3</b>
3.1	Making a Call .....	3
3.2	Answering a Call .....	3
<b>4</b>	<b>PHONEBOOK</b> .....	<b>3</b>
4.1	Add new contact .....	4
4.2	Searching for a contact .....	4
<b>5</b>	<b>MESSAGES</b> .....	<b>4</b>
5.1	Write message.....	4
<b>6</b>	<b>CALL LOGS</b> .....	<b>4</b>
<b>7</b>	<b>FILE MANAGER</b> .....	<b>4</b>
<b>8</b>	<b>MULTIMEDIA</b> .....	<b>4</b>
8.1	Audio player .....	4
8.2	Camera .....	5
8.3	Video recorder .....	5
8.4	Video player .....	5
<b>9</b>	<b>FM RADIO</b> .....	<b>5</b>
<b>10</b>	<b>TEXT INPUT SETTINGS</b> .....	<b>6</b>
10.1	Key functions for Input Mode.....	6
10.2	Multitap ABC mode .....	6
<b>11</b>	<b>SAFETY AND GENERAL INFORMATION</b> .....	<b>6</b>
11.1	Brief Introduction.....	6
11.2	Important Safety Precautions .....	6
11.3	Phone Precautions .....	6
11.4	Battery Safety Precautions .....	7
11.5	Disposing of Used Battery .....	7
11.6	Charger Precautions .....	8
11.7	SAR Information.....	错误! 未定义书签。
11.8	Clean and Maintenance.....	8

# 1 Phone Appearance and Keys








## 1.1 Physical Impression

## 1.2 Keys specification

Keys	Specification
Dial SIM1 Key	<ul style="list-style-type: none"> <li>■ Make a call by SIM1 card.</li> <li>■ Answer an incoming call.</li> <li>■ View SIM1 card Call Logs in standby mode.</li> <li>■ Confirm selected items.</li> </ul>
Dial SIM2 Key	<ul style="list-style-type: none"> <li>■ Make a call by SIM2 card.</li> <li>■ Answer an incoming call.</li> <li>■ View SIM2 card Call Logs in standby mode.</li> </ul>
Right soft key	<ul style="list-style-type: none"> <li>■ Display Phonebook list in standby mode.</li> <li>■ Return to the previous menu.</li> </ul>
END key	<ul style="list-style-type: none"> <li>■ Power on or power off the phone (by pressing and holding it for about 3s).</li> <li>■ End a call, or reject an incoming call.</li> <li>■ Return to standby mode.</li> </ul>
Navigation keys	<p>Indicates 【↑】 【↓】 【←】 【→】 four directions.</p> <p>In standby mode, press 【↑】 to access Write message;</p> <p>In standby mode, press 【↓】 to access Inbox;</p> <p>In standby mode, press 【←】 to access Alarm;</p> <p>In standby mode, press 【→】 to access Profiles;</p>
Middle key	<ul style="list-style-type: none"> <li>■ In standby mode, press middle key to display Main menu.</li> <li>■ Press middle key to confirm a selection</li> </ul>
*Key	<ul style="list-style-type: none"> <li>■ To display “*”, “+”, “P” and “W” by pressing it a few times in standby.</li> </ul>
Keypad	<ul style="list-style-type: none"> <li>■ Enter numbers, letter, and characters</li> <li>■ Call the voice mail center in standby mode (by pressing and holding the 1 key for about 3s)</li> <li>■ Speed-dial phone numbers in standby mode (by pressing and holding the 2-9keys for about 3s)</li> <li>■ Select a submenu item labeled with the corresponding digit number.</li> <li>■ To activate or deactivate silent profile in standby mode (by pressing and holding 0 key for 3 seconds).</li> </ul>
# Key	<ul style="list-style-type: none"> <li>■ Press Right soft key then press # key to lock/unlock keypad.</li> <li>■ To activate or deactivate Led flashlight in standby mode (by pressing and holding # key for 3 seconds).</li> </ul>

※**Note:** In standby mode means that your phone is switched on but not being used for any

### 1.3 Icons

Icon	Specification
	<b>Network signal strength</b> Straight stripe is more, the network signal is stronger.
	<b>Message</b> Receive new SMS message.
	<b>Keypad lock</b> The keypad is locked.
	<b>Earphone</b> The phone is inserted earphone.
	<b>Alarm</b> Set the alarm time and activate the function.
	<b>Incoming call alert type:</b> That is "Ring". That is "Vib. only". That is "Vib. And ring". That is "Vib. then ring".
	<b>Battery</b> Straight stripe is more, the battery is more.

## 2 User Guide

### 2.1 Installing the battery

- 1) Place the metal contact points of the battery downward and flush with metal contact points in the battery bay, then insert the bottom of battery into battery bay.
- 2) Place the back cover of the battery onto the phone squarely, and push upward till it clicks into place.

※ **Note:** Do install the battery as the diagram so as prevent the battery contact patch being damaged. ※



### 2.2 Charging the battery

Your phone is powered by a rechargeable battery. When the battery is weak, the battery sensor informs you. At this time, you need charge the battery. When the battery becomes too weak for the phone to operate, it switches off automatically.

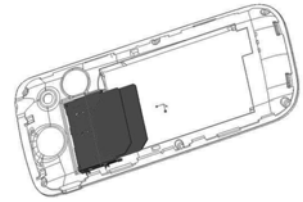
- 1) Connect the charger to a power socket.
- 2) Connect the charger to the charger jack on the phone.
- 3) Wait until the battery is completely charged. During charging, the charging icon is displayed in animation. When the charging icon becomes static, the battery is fully charged.
- 4) Disconnect the charger from the phone. Disconnect the charger from the power socket.



### 2.3 Inserting the SIM card

The mobile support two SIM cards on-line at one time. The method of the two SIM cards of inserting or removing is the same.

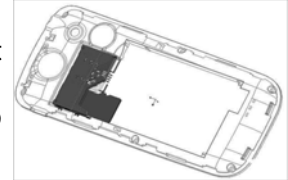
- 1) Power off the phone; remove battery and other external power connection, as shown in the image.
- 2) Insert SIM card into SIM card socket.
- 3) When you need to remove SIM card, please power off the phone first, remove battery, then remove the card.



## 2.4 Installing T-Flash card

T-Flash card slot locate at the right top of the SIM card. Insert memory card into card slot as shown in the image.

※ **Note:** No micro SD card is delivered in the product package. The micro SD card is sold separately. ※



## 2.5 Power On or Off

Make sure the battery is already inserted:

- 1) Power On: Hold down end key until the phone-on image display. After power on, the phone searches for your network automatically. Some SIM card is protected by the PIN number, if you are asked for inputting the PIN number, please enter it, then press middle key.
- 2) Power Off: Hold down end key until the power-off image display.

※ **Note:**

- (a) PIN is provided by your service provider. If the PIN is entered incorrectly three times, the SIM card is barred.
- (b) If the phone asks for an unlock code when switched on, enter the unlock code and press middle key. ※

# 3 Call Functions

## 3.1 Making a Call

When you want a call, press the phone keypad to input the area code and phone number. Click middle key to save.

Pressing \* key a few times until character "+" appears, and then you can dial an international number. (The '+' stands for international dial code.) Press dial key to dial the number. If the number is stored with a name, it appears on the display when you dial the number.

You can also make a call through call logs, phonebook and messages.

## 3.2 Answering a Call

When somebody calls you, the phone rings, and displays the incoming call area. If the caller can be identified, the caller's phone number (or name if stored in your phonebook) is displayed.

When a call is coming, answer the call by pressing dial keys. The missed incoming calls appear on the display. Press dial SIM1/2 key to check the details of the missed calls or press dial key to call the number. Press end key to end the call.

# 4 Phonebook

This feature allows you to store phone numbers and their corresponding names in the memory of your SIM card and phone's memories, at the same time, provides browsing, adding, managing functions. Your phone can store up to 300 contacts, while SIM card memory depends on various SIM card. There is "1" or "2" icon displayed on the left side of some contacts, it means this contact is stored in SIM1 or SIM2.

---

## 4.1 Add new contact

Add new entry and related information to phonebook.

First, press navigation key to move the cursor to “Preferred storage”, select to save to SIM1, SIM2 or Phone.

Then, press navigation key to move the cursor to “Add new contact”, input Name and Number.

## 4.2 Searching for a contact

Press corresponding alphanumeric keys to search for a number by name. Enter the first letter of the name that you want to find. The phonebook entries are listed, starting with the first entry matching your input. For example, you want to find the number named “zhang san”, then press 9 key four times, the display will show the name list starting with “z”.


You can finish the following operations with the find number:

# 5 Messages

User can send text messages.

## 5.1 Write message

Each text message has limitation in length, that is 1224 English characters. If exceed the limitation, the message will be cut to many messages for sending.

Screen icon  that displays in standby mode refers to any new message just received and unviewed. You can set the message tone to remind you of receiving any new message. No more messages can be received when the Inbox is full. You can receive the new message after you have deleted some old ones to release memory space.

Write new message for sending. During editing the message, press dial SIM1 key to operate:

- ◇ **Send:** enter number or add from phonebook or call logs. You can add many numbers.
- ◇ **Save:** save the message to draft of SIM1 or SIM2.

After editing the message, select “Send” and select the number, press middle key to access:

- ◇ **Send:** send the message to the selected numbers.
- ◇ **Edit:** edit the number.

# 6 Call logs

In this menu, you can view all the calls, or the call you missed, dialed and received.

There is “1” or “2” icon displayed on the left side of every call logs, it means this call is dialed or received by SIM1 or SIM2. Select the call log, press SIM1 or SIM2 to dial the number with SIM1 or SIM2.

# 7 File manager

For saving more information, the phone support memory card. The card can be installed at any time. The menu can manage the files on the phone.

# 8 Multimedia

## 8.1 Audio player

Through the menu, you can play music or ring tone file. Press dial SIM1 key to access music list, press dial SIM1 key to operate.

During playing the music, press left or right navigation key to next music file; long press left



or right navigation key to fast forward or Rewind; press up and down navigation key to adjust volume; press middle key to pause/play the playing file; press dial SIM2 key to stop playing.

## 8.2 Camera

With the phone camera feature, you can take picture at any time without carrying digital camera. Enter the menu, the display shows the preview image.

Keys	Functions
Dial SIM1 key	To open Options menu
Right Soft Key (RSK)	Back to main menu
OK key	To take a picture

## 8.3 Video recorder

Through the menu, you can record video by yourself. Press middle key to start recording. During scanning, press dial SIM1 key to operate.

Press middle key to start recording. During recording, press right soft key to stop, select whether to save. The file is saved as \*.avi file.

## 8.4 Video player

The menu supports play video file. When the file list is null, select the storage path first, and then select the video folder. There will update the video file list, select one file from the list, press dial SIM1 key to play. Press end key to exit and return list. The phone supports the AVI, 3GP and MP4 video files.

# 9 FM radio

Before starting FM radio, insert the earphone into left side of the phone. The earphone line equates in FM radio antenna. Open the FM radio, the phone will show the channel frequency. Press left/right navigation keys to change the channel frequency. Press dial SIM1 key to operate: Power on/off, Tune, Channel list, Volume, Preset auto search, Loudspeaker, Record, Append, File list.

# 10 Bluetooth

The phone support Bluetooth communication mode. In idle mode, press middle key, select "Menu-Bluetooth".

- ✧ **Turn on/off:** set the function on or off.
- ✧ **Visibility:** Select On or Off. If disable the feature, the phone will not be used as a BT device.
- ✧ **My device:** show my BT device list. If the list is null, press OK key to search the new device. Select one device, press left soft key to pair, if the device has passcode, input the passcode and press OK.
- ✧ **Search audio device:** Before search Bluetooth device, power on Bluetooth function. After searching new device, connect the new device in pairs according to the display information. When successfully connected, the devices can communicate.
- ✧ **My name:** edit the device name.
- ✧ **Advanced:** set Bluetooth parameter.
  - Storage: select storage location of transfer file from Bluetooth.
  - My address: show the device address.

---

## 1 1 Text input settings

### 11.1 Key functions for Input Mode

- 1) Digital key 1~9: show different character with different input mode.
- 2) Navigation key: move cursor.
- 3) 1 key: in ABC, abc Mode, input “.,-?!’@:#\$/\_1” in turn.
- 4) 0 key: in Input Mode, press to enter space. In Number Mode, press to enter 0; In ABC/abc Mode, press one time to enter space, press 2 times continuous to 0.
- 5) \* key: open punctuation mark list.
- 6) # key: change input mode.

### 11.2 Multitap ABC mode

When typing in Multitap ABC or abc mode, press the key which corresponds to the desired letter several times until the letter you want appears.

Example: input “how”, in Multitap abc mode, you press numeric key 4 two times to show “h”; press numeric key 6 three times to show “o”; press numeric key 9 once to show “w”.

ABC means to enter uppercase letters; abc means to enter lowercase letters.

## 1 2 Safety and General Information

### 12.1 Brief Introduction

This part will be edited by the client.

### 12.2 Important Safety Precautions

Read these guidelines before using your wireless phone. Failure to comply with them may be dangerous or illegal.

### 12.3 Phone Precautions

- 1) Switch off your phone in aircraft, hospital and any facility where posted notices instruct you to do so. Wireless phone can cause interference to electronic instruments and medical equipment, when using your phone in such kind of area, meet any special regulations in force. Your phone features automatically power on function, check your power settings and make sure your mobile phone will not automatically switch on when on board an aircraft. Turn off your phone whenever on board an air craft, so as not to interfere with electronic system and result in aircraft accidents.
- 2) To avoid electromagnetic interference and/or compatibility conflicts, turn off your mobile phone in any facility where posted notices instruct you to do so. Hospitals or health care facilities may be using equipment that is sensitive to external RF energy. Especially when near the below devices: hearing aid, pacemaker and other medical devices, fire detector, automatic door and other automatic control devices. In the event of mobile phone interfering with pacemaker and other medical electronic devices, consult the manufacturer of the device or local salesman. Mobile phone may interfere with appliances like television, radio, or PC
- 3) Do not hit the LCD display with extreme force or use it to hit other things. Doing so may break the glass and cause the LCD liquid to leak. If the liquid enters into eyes, it may blind you. In such case, rinse with a large quantity of water immediately (do not rub your eyes) and consult a doctor.
- 4) Do not disassemble or remodel your phone. Doing this may damage your phone or result in the leakage of electricity and circuit fault.
- 5) In a very few cases, the use of mobile phone may interfere with the electronic equipments in some cars. In such case, for safety, do not use mobile phone.

- 6) Do not press keys with sharp things like needle or pen head. Doing so may cause damage to your phone or operation mistakes.
- 7) Do not use the mobile phone if it has a damaged antenna, as it may cause injury to persons.
- 8) Turn your phone off and do not remove its battery or charge the battery when in an area with a potentially explosive atmosphere. Sparks in such areas could cause an explosion or fire resulting in property damage, bodily injury or even death. For example: switch off the phone before entering refueling point. Do not use the phone near at a refueling point (service station) or near fuels or chemicals.
- 9) Keep your phone away from moisture. If water or other liquids get into phone, it will cause phone overheating, leakage of electricity and malfunction.

## 12.4 Battery Safety Precautions

### 1) Battery Precautions

- ✧ Do not throw a battery into a fire. A battery may rupture or burn violently when thrown into a fire. Please dispose of the used battery according to your local environmental laws.
- ✧ When installing battery, do not forcibly put pressure on the battery, or it may result in overheating, leaking, rupturing or fire.
- ✧ Do not short-circuit the positive (+) and negative (-) terminals. If the positive and negative terminals come into contact with each other or are shorted with wire or other metallic objects, an instantaneous high current will flow, possibly damaging the battery structure due to the generated heat, with the possible result of overheating, leaking, rupturing or fire.
- ✧ Do not exceed the battery manufacturer's charging current or voltage limitations. And only use the approved peripherals.
- ✧ Do not directly solder anything onto the battery terminals. Direct soldering onto the battery terminals can cause heat generation, leaking, rupturing or fire.
- ✧ If the electrolyte inside the battery gets into your eyes, it may blind you. In such case, do not rub your eyes but rinse with a large quantity of water immediately and consult a doctor.
- ✧ For safety, do not put the battery into your mouth or use the damaged battery.
- ✧ Do not attempt to disassemble or modify a battery. Doing so may result in leaking, overheating, rupture or fire.
- ✧ Do not use or put battery near high temperature places like fire or heat-generating parts, or it may cause leaking, overheating, rupture or fire.
- ✧ Stop using the battery if abnormal heat, odor, discoloration, deformation, or abnormal conditions are detected during use, charge, or storage.
- ✧ Do not allow leaked electrolyte to come into contact with your skin or clothes. If this happens, rinse with a large quantity of water immediately and consult a doctor.
- ✧ If the battery leaks electrolyte or emits a strange odor, immediately remove it from open flame to avoid fire and rupture.
- ✧ Keep battery from moisture, as it may cause the battery to overheat, smoke and corrode.
- ✧ Do not place or store the battery in an automobile in hot weather, under direct sunlight. Use or storage of the battery in these places may cause battery leakage and overheating, and possibly lower the performance and shorten the battery's life.
- ✧ Only use the approved batteries and fittings. Do not connect to unspecified devices.
- ✧ Do not continuously charge the battery for more than 24 hours, as battery may be damaged by extensive overcharging.

### 2) Battery Capability

- ✧ Calling, backlight on and playing game drain your battery much quicker. Long talk-time decreases the duration of the standby time.
- ✧ Idle time becomes shorter if the phone is out of coverage.
- ✧ Battery capability varies along with charging level, temperature, signal strength, and backlight.

## 12.5 Disposing of Used Battery

The rechargeable batteries contain toxic heavy metals like mercury, cadmium, and lead. Improperly disposed batteries will cause heavy metal contamination. These batteries when discarded in ordinary household or workplace, after a long time, the heavy metal will leach slowly

---

into the soil, ground water and surface water. Therefore, please dispose of used battery in a proper way.

- 1) Do not land filled, because the heavy metal will leach slowly into the soil, ground water and surface water.
- 2) Do not incinerate, because the heavy metals can enter the air through smokestack emissions and can concentrate in the ash produced by combustion.
- 3) Do not compost, because the heavy metals in the compost may exceed standards.
- 4) Do not throw away used batteries random, avoiding environmental pollution.
- 5) Separate wasted batteries from household trash, reducing its harm to the environment.

## 12.6 Charger Precautions

- 1) Use charger to charge battery quickly. Before charging, make sure the battery has been inserted in the phone correctly. Do not remove the battery while charging.
- 2) Please use the specified alternating current. Using other voltage will cause electricity leakage, fire or damage to the phone and charger.
- 3) Charge your battery for at least 12 hours at the first time for its best performance and long cycle life.
- 4) If the charger still plugs in the charge slot and the phone has been fully charged, the phone will check the battery state automatically, and recharge the battery once it is not at full level.
- 5) While the mobile phone is being charged, keep it out of the reach of children.
- 6) Do not short-circuit the charger. A short-circuit may result in electric shock, smoke and damage to the charger.
- 7) If the power cord is damaged, please do not use the charger, or it may cause fire or electric shock.
- 8) Please clean the dust on the power outlet in time.
- 9) Do not put container filled with water beside charger, as water may be splashed on charger, causing the charger overheating, leakage of electricity and malfunction.
- 10) If the charger comes into contact with water or any other liquids, immediately unplug the charger from outlet to reduce the risk of overheating, fire, electric shock or charger malfunction.
- 11) Do not disassemble or modify the charger. Doing so could result in risk of injury to persons, electric shock, fire and damage to the charger.
- 12) Do not use charger in a high moisture environment like bathroom, or it may cause electric shock, fire and damage to the charger.
- 13) Do not touch the charger, power cord and power outlet with wet hands as it may cause electric shock.
- 14) Never put a heavy object on the power cord or modify the power cord. Doing so may cause electric shock or fire.
- 15) To reduce risk of electric shock or injury, unplug the charger from the power outlet before cleaning or maintenance.
- 16) When you disconnect the power cord of the charger, grasp and pull the plug, not the cord. Pulling the cord may cause electric shock and fire.

## 12.7 Specific Absorption Rate (SAR) information

SAR tests are conducted using standard operating positions accepted by the FCC with the phone transmitting at its highest certified power level in all tested frequency bands, although the SAR is determined at the highest certified power level, the actual SAR level of the phone while operating can be well below the maximum value, in general, the closer you are to a wireless base station antenna, the lower the power output.

Before a new model phone is available for sale to the public, it must be tested and certified to the FCC that it does not exceed the exposure limit established by the FCC, Tests for each phone are performed in positions and locations (e.g. at the ear and worn on the body) as required by the FCC.

---

For body worn operation, this model phone has been tested and meets the FCC RF exposure guidelines when used with an accessory designated for this product or when used with an accessory that

Contains no metal and that positions the handset a minimum of 1.5 cm from the body.

**12.8 Non-compliance with the above restrictions may result in violation of RF exposure guidelines.Clean and Maintenance**

- 1) Your phone, battery and charger are not waterproof. Do not use them in a high moisture environment like bathroom, and meanwhile, avoid getting wet in the rain.
- 2) Use soft dry cloth to clean the phone, battery and charger.
- 3) Do not use liquor like alcohol, thinner or benzene to clean the phone.

The dust or dirt on power outlet may cause poor contact, power failure and even fail to charge. Please clean it up within a certain time.