

Mobile Phone

i125

User Manual

Table of Contents

TABLE OF CONTENTS	I
1 SAFETY AND GENERAL INFORMATION.....	1
1.1 IMPORTANT SAFETY PRECAUTIONS.....	1
1.1.1 General Precautions.....	1
1.1.2 Phone Precautions.....	1
1.1.3 Battery Safety Precautions.....	2
1.1.4 Disposing of Used Battery.....	2
1.1.5 Charger Precautions.....	3
1.1.6 Clean and Maintenance.....	3
1.2 TERMINOLOGY EXPLANATION.....	3
2 SPECIFICATION	4
3 PHONE APPEARANCE AND KEYS.....	4
3.1 PHYSICAL IMPRESSION	4
3.2 KEYS SPECIFICATION.....	4
3.3 ICONS	5
4 MENU FUNCTION.....	6
5 USER GUIDE.....	6
5.1 INSTALLING THE BATTERY.....	6
5.2 CHARGING THE BATTERY	7
5.3 INSERTING THE SIM CARD	7
5.4 T-FLASH CARD USE.....	7
5.4.1 Installing T-Flash card.....	7
5.4.2 T-Flash card use.....	7
5.5 POWER ON OR OFF	8
6 CALL FUNCTIONS.....	8
6.1 MAKING A CALL.....	8
6.2 ANSWERING A CALL	9
6.3 H-FREE/H-HELD	9
6.4 CALL WAITING	9
6.5 CALL OPTIONS	9
6.5.1 During a call.....	9
6.5.2 Making a Multiparty Call.....	9
7 PHONEBOOK.....	10
7.1 ADD NEW CONTACT	10
7.2 VIEW.....	10
7.3 SEND TEXT MESSAGE.....	10
7.4 SEND MULTIMEDIA MESSAGE.....	11

7.5	CALL.....	11
7.6	IP DIAL.....	11
7.7	EDIT.....	11
7.8	DELETE.....	11
7.9	COPY.....	11
7.10	MOVE.....	11
7.11	ADD TO BLACKLIST.....	11
7.12	CALLER GROUPS.....	11
7.13	PHONEBOOK SETTINGS.....	11
8	MESSAGING.....	12
8.1	WRITE MESSAGE.....	12
	<i>8.1.1 Text meassage.....</i>	<i>12</i>
	<i>8.1.2 Multimedia meassage.....</i>	<i>12</i>
8.2	INBOX.....	13
8.3	DRAFTS.....	13
8.4	OUTBOX.....	13
8.5	SENT MESSAGES.....	14
8.6	DELETE MESSAGES.....	14
8.7	BROADCAST MESSAGE.....	14
8.8	MESSAGE SETTINGS.....	14
	<i>8.8.1 Text meassage.....</i>	<i>14</i>
	<i>8.8.2 Multimedia meassage.....</i>	<i>15</i>
	<i>8.8.3 Service message.....</i>	<i>15</i>
9	CALL CENTER.....	15
9.1	CALL HISTORY.....	15
	<i>9.1.1 Missed calls.....</i>	<i>15</i>
	<i>9.1.2 Dialed calls.....</i>	<i>15</i>
	<i>9.1.3 Received calls.....</i>	<i>15</i>
	<i>9.1.4 Delete call logs.....</i>	<i>15</i>
9.2	CALL SETTINGS.....	15
	<i>9.2.1 SIM1 call settings.....</i>	<i>15</i>
	<i>9.2.2 SIM2 call settings.....</i>	<i>16</i>
	<i>9.2.3 Advance settings.....</i>	<i>16</i>
10	SETTINGS.....	17
10.1	DUAL SIM SWITCH.....	17
10.2	DUAL SIM SETTINGS.....	17
10.3	PHONE SETTINGS.....	17
	<i>10.3.1 Time and date.....</i>	<i>17</i>
	<i>10.3.2 Schedule power on/off.....</i>	<i>17</i>
	<i>10.3.3 Language.....</i>	<i>17</i>
	<i>10.3.4 Preferred input method.....</i>	<i>17</i>
	<i>10.3.5 Display.....</i>	<i>17</i>
	<i>10.3.6 Dedicated key.....</i>	<i>18</i>
	<i>10.3.7 Flight mode.....</i>	<i>18</i>
	<i>10.3.8 UART settings.....</i>	<i>18</i>

10.3.9	<i>Misc. settings</i>	18
10.4	NETWORK SETTINGS	18
10.5	SECURITY SETTINGS.....	18
10.5.1	<i>SIM1 security</i>	18
10.5.2	<i>SIM2 security</i>	18
10.5.3	<i>Phone security</i>	18
10.5.4	<i>Auto keypad lock</i>	19
10.6	CONNECTIVITY	19
10.6.1	<i>Bluetooth</i>	19
10.6.2	<i>Data account</i>	19
10.7	RESTORE FACTORY SETTINGS	19
10.8	SOUND EFFECTS	19
11	MULTIMEDIA	20
11.1	FILE MANAGER.....	20
11.1.1	<i>Phone</i>	20
11.1.2	<i>Memory card</i>	20
11.2	CAMERA.....	20
11.3	IMAGE VIEWER	21
11.4	VIDEO RECORDER	21
11.5	VIDEO PLAYER.....	22
11.6	AUDIO PLAYER.....	22
11.7	SOUND RECORDER.....	22
11.8	FM RADIO.....	23
12	ENTERTAINMENT	23
13	USER PROFILES	23
13.1	GENERAL	23
13.2	SILENT.....	23
13.3	MEETING	23
13.4	OUTDOOR	23
13.5	MY STYLE	23
14	ORGANIZER	24
14.1	CALENDAR.....	24
14.2	ALARM.....	24
14.3	WORLD CLOCK.....	24
14.4	FLASHLIGHT	24
15	SERVICES	24
15.1	WAP BROWSER	24
16	TEXT INPUT SETTINGS	25
16.1	KEY FUNCTIONS FOR INPUT MODE.....	25
16.2	MULTITAP ABC MODE.....	25
17	GUIDELINES FOR SAFE AND EFFICIENT USE	25

17.1	CARE AND MAINTENANCE	25
17.2	BATTERY MAINTENANCE.....	25
18	TROUBLESHOOTING.....	26
19	WARNING.....	26

1 Safety and General Information

1.1 Important Safety Precautions

Read these guidelines before using your wireless phone. Failure to comply with them may be dangerous or illegal.

1.1.1 General Precautions

1) Mobile Phone

- ✧ Please use the phone at a temperature of -10°C ~ 55°C and a relative humidity of 35%~85%.
- ✧ Avoid using the phone near regular telephone, television, radio and automatic office equipment, as they may interfere with one another.
- ✧ Please keep the removable SIM card out of the reach of children as there is a risk they could swallow it.

2) Battery

- ✧ Please put the battery in a cool and well-ventilated place out of direct sunlight.
- ✧ Batteries have life cycles. If the time that the battery powers equipment becomes much shorter than usual, the battery life is at an end. Replace the battery with a new battery of the same.
- ✧ Do not discard battery with household trash. Please dispose of used battery according to your local environmental laws and guidelines.

3) Charger

Do not charge the phone in the below environment:

- ✧ Under direct sunlight;
- ✧ Temperature out of range: -10°C to 55°C ;
- ✧ Humid, dusty or severely shaking environment (could cause a malfunction);
- ✧ Near appliances such as television, radio (could affect the image, audio effect).

1.1.2 Phone Precautions

- 1) Switch off your phone in aircraft, hospital and any facility where posted notices instruct you to do so. Wireless phone can cause interference to electronic instruments and medical equipment, when using your phone in such kind of area, meet any special regulations in force. Your phone features automatically power on function, check your power settings and make sure your mobile phone will not automatically switch on when on board an aircraft. Turn off your phone whenever on board an air craft, so as not to interfere with electronic system and result in aircraft accidents.
- 2) To avoid electromagnetic interference and/or compatibility conflicts, turn off your mobile phone in any facility where posted notices instruct you to do so. Hospitals or health care facilities may be using equipment that is sensitive to external RF energy. Especially when near the below devices: hearing aid, pacemaker and other medical devices, fire detector, automatic door and other automatic control devices. In the event of mobile phone interfering with pacemaker and other medical electronic devices, consult the manufacturer of the device or local salesman. Mobile phone may interfere with appliances like television, radio, or PC
- 3) Do not hit the LCD display with extreme force or use it to hit other things. Doing so may break the glass and cause the LCD liquid to leak. If the liquid enters into eyes, it may blind you. In such case, rinse with a large quantity of water immediately (do not rub your eyes) and consult a doctor.
- 4) Do not disassemble or remodel your phone. Doing this may damage your phone or result in the leakage of electricity and circuit fault.
- 5) In a very few cases, the use of mobile phone may interfere with the electronic equipments in some cars. In such case, for safety, do not use mobile phone.
- 6) Do not press keys with sharp things like needle or pen head. Doing so may cause damage to your phone or operation mistakes.
- 7) Do not use the mobile phone if it has a damaged antenna, as it may cause injury to persons.

- 8) Turn your phone off and do not remove its battery or charge the battery when in an area with a potentially explosive atmosphere. Sparks in such areas could cause an explosion or fire resulting in property damage, bodily injury or even death. For example: switch off the phone before entering refueling point. Do not use the phone near at a refueling point (service station) or near fuels or chemicals.
- 9) Keep your phone away from moisture. If water or other liquids get into phone, it will cause phone overheating, leakage of electricity and malfunction.

1.1.3 Battery Safety Precautions

1) Battery Precautions

- ✧ Do not throw a battery into a fire. A battery may rupture or burn violently when thrown into a fire. Please dispose of the used battery according to your local environmental laws.
- ✧ When installing battery, do not forcibly put pressure on the battery, or it may result in overheating, leaking, rupturing or fire.
- ✧ Do not short-circuit the positive (+) and negative (-) terminals. If the positive and negative terminals come into contact with each other or are shorted with wire or other metallic objects, an instantaneous high current will flow, possibly damaging the battery structure due to the generated heat, with the possible result of overheating, leaking, rupturing or fire.
- ✧ Do not exceed the battery manufacturer's charging current or voltage limitations. And only use the approved peripherals.
- ✧ Do not directly solder anything onto the battery terminals. Direct soldering onto the battery terminals can cause heat generation, leaking, rupturing or fire.
- ✧ If the electrolyte inside the battery gets into your eyes, it may blind you. In such case, do not rub your eyes but rinse with a large quantity of water immediately and consult a doctor.
- ✧ For safety, do not put the battery into your mouth or use the damaged battery.
- ✧ Do not attempt to disassemble or modify a battery. Doing so may result in leaking, overheating, rupture or fire.
- ✧ Do not use or put battery near high temperature places like fire or heat-generating parts, or it may cause leaking, overheating, rupture or fire.
- ✧ Stop using the battery if abnormal heat, odor, discoloration, deformation, or abnormal conditions are detected during use, charge, or storage.
- ✧ Do not allow leaked electrolyte to come into contact with your skin or clothes. If this happens, rinse with a large quantity of water immediately and consult a doctor.
- ✧ If the battery leaks electrolyte or emits a strange odor, immediately remove it from open flame to avoid fire and rupture.
- ✧ Keep battery from moisture, as it may cause the battery to overheat, smoke and corrode.
- ✧ Do not place or store the battery in an automobile in hot weather, under direct sunlight. Use or storage of the battery in these places may cause battery leakage and overheating, and possibly lower the performance and shorten the battery's life.
- ✧ Only use the approved batteries and fittings. Do not connect to unspecified devices.
- ✧ Do not continuously charge the battery for more than 24 hours, as battery may be damaged by extensive overcharging.

2) Battery Capability

- ✧ Calling, backlight on and playing game drain your battery much quicker. Long talk-time decreases the duration of the standby time.
- ✧ Idle time becomes shorter if the phone is out of coverage.
- ✧ Battery capability varies along with charging level, temperature, signal strength, and backlight.

1.1.4 Disposing of Used Battery

The rechargeable batteries contain toxic heavy metals like mercury, cadmium, and lead. Improperly disposed batteries will cause heavy metal contamination. These batteries when discarded in ordinary household or workplace, after a long time, the heavy metal will leach slowly into the soil, ground water and surface water. Therefore, please dispose of used battery in a proper way.

- 1) Do not land filled, because the heavy metal will leach slowly into the soil, ground water and surface water.
- 2) Do not incinerate, because the heavy metals can enter the air through smokestack

emissions and can concentrate in the ash produced by combustion.

- 3) Do not compost, because the heavy metals in the compost may exceed standards.
- 4) Do not throw away used batteries random, avoiding environmental pollution.
- 5) Separate wasted batteries from household trash, reducing its harm to the environment.

1.1.5 Charger Precautions

- 1) Use charger to charge battery quickly. Before charging, make sure the battery has been inserted in the phone correctly. Do not remove the battery while charging.
- 2) Please use the specified alternating current. Using other voltage will cause electricity leakage, fire or damage to the phone and charger.
- 3) Charge your battery for at least 12 hours at the first time for its best performance and long cycle life.
- 4) If the charger still plugs in the charge slot and the phone has been fully charged, the phone will check the battery state automatically, and recharge the battery once it is not at full level.
- 5) While the mobile phone is being charged, keep it out of the reach of children.
- 6) Do not short-circuit the charger. A short-circuit may result in electric shock, smoke and damage to the charger.
- 7) If the power cord is damaged, please do not use the charger, or it may cause fire or electric shock.
- 8) Please clean the dust on the power outlet in time.
- 9) Do not put container filled with water beside charger, as water may be splashed on charger, causing the charger overheating, leakage of electricity and malfunction.
- 10) If the charger comes into contact with water or any other liquids, immediately unplug the charger from outlet to reduce the risk of overheating, fire, electric shock or charger malfunction.
- 11) Do not disassemble or modify the charger. Doing so could result in risk of injury to persons, electric shock, fire and damage to the charger.
- 12) Do not use charger in a high moisture environment like bathroom, or it may cause electric shock, fire and damage to the charger.
- 13) Do not touch the charger, power cord and power outlet with wet hands as it may cause electric shock.
- 14) Never put a heavy object on the power cord or modify the power cord. Doing so may cause electric shock or fire.
- 15) To reduce risk of electric shock or injury, unplug the charger from the power outlet before cleaning or maintenance.
- 16) When you disconnect the power cord of the charger, grasp and pull the plug, not the cord. Pulling the cord may cause electric shock and fire.

1.1.6 Clean and Maintenance

- 1) Your phone, battery and charger are not waterproof. Do not use them in a high moisture environment like bathroom, and meanwhile, avoid getting wet in the rain.
- 2) Use soft dry cloth to clean the phone, battery and charger.
- 3) Do not use liquor like alcohol, thinner or benzene to clean the phone.
- 4) The dust or dirt on power outlet may cause poor contact, power failure and even fail to charge. Please clean it up within a certain time.

1.2 Terminology explanation

GSM	Global system of mobile
SMS	Short message service
SIM	Subscriber identify module card
PC	Personal computer
PIN	PIN code is a 4-8 digit personal identification number, and is used to prevent your SIM card from misuse. It is provided by your service provider. If you enter 3 times error PIN code continuously, the SIM card will be locked, and then you must enter PUK code to unlock.

PIN2	PIN code is a 4-8 digit personal identification number. It is provided by your service provider. To protect the access of some advanced functions like fixed dial. If you enter 3 times error PIN2 code continuously, the SIM card will be locked, and then you must enter PUK2 code to unlock.
PUK	An 8 digit key code. Used to unlock SIM cards after the wrong PIN has been entered. PUK is provided by your service provider.
PUK2	An 8 digit key code. Used to unlock SIM cards after the wrong PIN2 has been entered. PUK2 is provided by your service provider.

2 Specification

Band: GSM 850/1900/900/1800 Dual sim cards, dual standby, single pass

Phone Type: Bar phone

Talk Time: 6 hrs. (Network Dependent)

Stand-by time: 300-600 hrs. (Network Dependent)

Phonebook Storage: 300

Phone SMS storage: 50

3 Phone Appearance and Keys







3.1 Keys specification

Keys	Specification
Dial SIM1 Key / Left Soft Key	<ul style="list-style-type: none"> ■ Make a call by SIM1 card. ■ Answer an incoming call. ■ Display Main Menu in standby mode. ■ Confirm selected items.
Dial SIM2 Key	<ul style="list-style-type: none"> ■ Make a call by SIM2 card. ■ Answer an incoming call. ■ View SIM1 & SIM2 card Call Logs in standby mode.
END key	<ul style="list-style-type: none"> ■ Power on or power off the phone (by pressing and holding it for about 3s). ■ End a call, or reject an incoming call. ■ Return to standby mode.
Right soft key	<ul style="list-style-type: none"> ■ Display Phonebook list in standby mode. ■ Return to the previous menu.
Navigation keys	Indicates 【↑】 【↓】 【←】 【→】 four directions. In standby mode, press 【↑】 to access Shortcuts;

	In standby mode, press 【↓】 to access Alarm; In standby mode, press 【←】 to access User profiles; In standby mode, press 【→】 to access Add new contact;
Middle key	<ul style="list-style-type: none"> ■ In standby mode, press middle key to display Main menu. ■ Press middle key to confirm a selection
*Key/ Lock key	<ul style="list-style-type: none"> ■ Press left soft key then press * key to lock/unlock keypad. ■ In input mode, enter punctuation. To display “*”, “+”, “P” and “W” by pressing it a few times in standby..
Keypad	<ul style="list-style-type: none"> ■ Enter numbers, letter, and characters ■ Call the voice mail center in standby mode (by pressing and holding the 1 key for about 3s) ■ Speed-dial phone numbers in standby mode (by pressing and holding the 2-9keys for about 3s) ■ Select a submenu item labeled with the corresponding digit number.
# Key	<ul style="list-style-type: none"> ■ To activate or deactivate silent profile in standby mode (by pressing and holding # key for 3 seconds).

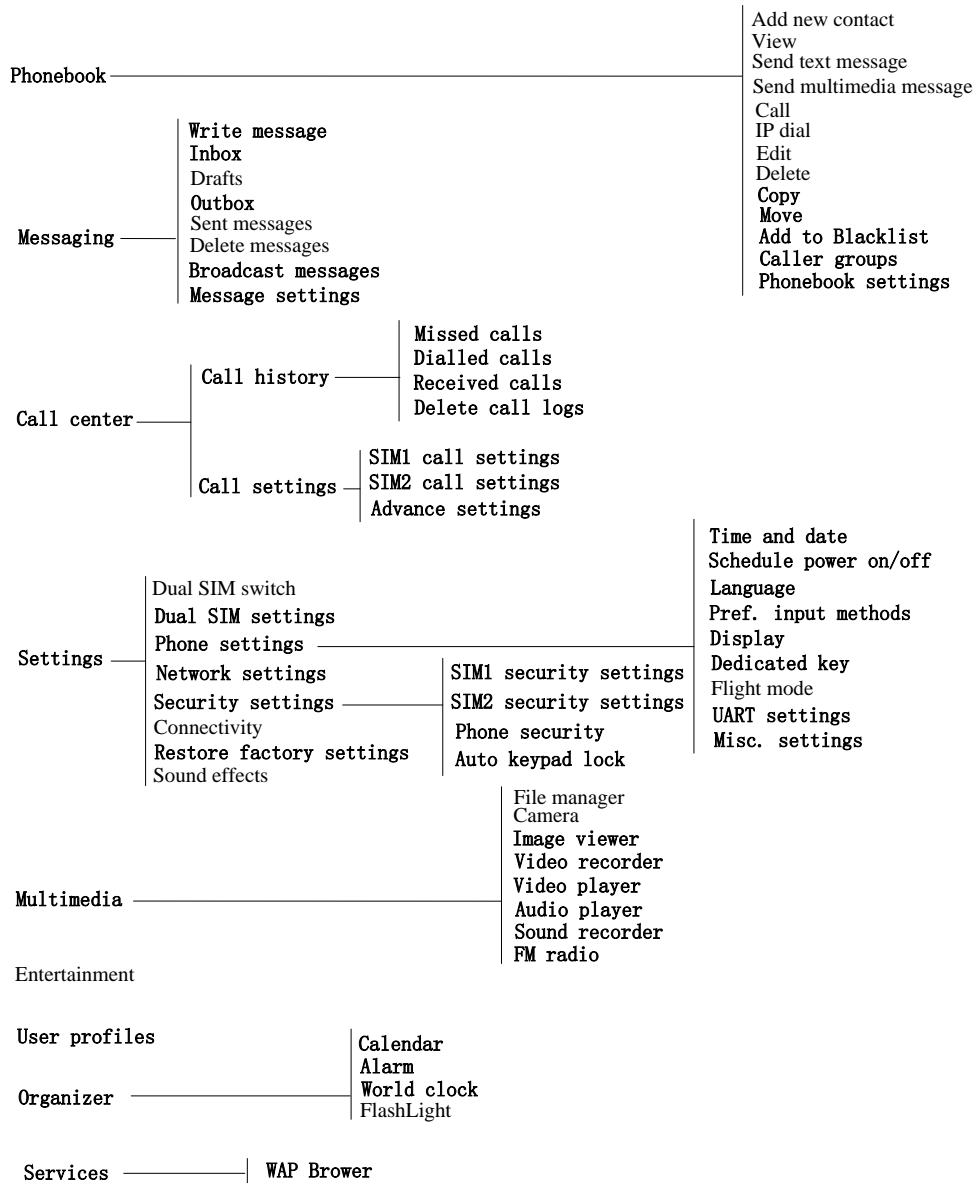
※**Note:** In standby mode means that your phone is switched on but not being used for any function. ※

3.2 Icons

Icon	Specification
	Network signal strength Straight stripe is more, the network signal is stronger. Top right number indicates use line. Left bottom number indicates current SIM card.
	Bluetooth The phone opens Bluetooth function.
 	Message Receive new SMS message. Receive new MMS message.
	Keypad lock The keypad is locked.
	Earphone The phone is inserted earphone.

4 Menu Function

In standby mode, press middle key to access menu. Scroll through options by pressing navigation keys, and press left soft key to access selected option.



※Note:

- (a) When the mobile have one valid SIM card, the SIM1/2 corresponding menu will not show.
- (b) Part of secondary menu and its submenu are not listed on the above. ※

5 User Guide

5.1 Installing the battery

- 1) Place the metal contact points of the battery downward and flush with metal contact points in the battery bay, then insert the bottom of battery into battery bay.
- 2) Place the back cover of the battery onto the phone squarely, and push upward till it clicks into place.



※ **Note:** Do install the battery as the diagram so as prevent the battery contact patch being damaged. ※

5.2 Charging the battery

Your phone is powered by a rechargeable battery. When the battery is weak, the battery sensor informs you. At this time, you need charge the battery. When the battery becomes too weak for the phone to operate, it switches off automatically.

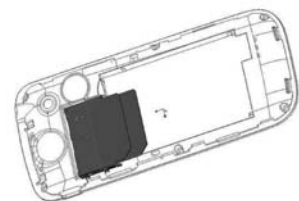
- 1) Connect the charger to a power socket.
- 2) Connect the charger to the charger jack on the phone.
- 3) Wait until the battery is completely charged. During charging, the charging icon is displayed in animation. When the charging icon becomes static, the battery is fully charged.
- 4) Disconnect the charger from the phone. Disconnect the charger from the power socket.
- 5) Connect the charger to a power sockets shown in the image.



5.3 Inserting the SIM card

The mobile support two SIM cards on-line at one time. The method of the two SIM cards of inserting or removing is same.

- 1) Power off the phone; remove battery and other external power connection, as shown in the image.
- 2) Insert SIM card into SIM card socket.
- 3) When you need to remove SIM card, please power off the phone first, remove battery, then remove the card.



※ **Note:**

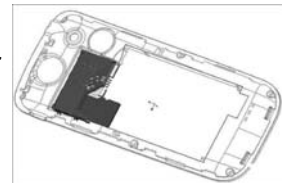
- (a) Be careful when handling, inserting or removing the SIM card, friction or bending may damage SIM card.
- (b) If left unused, keep SIM card out of the reach of small children.
- (c) Keep SIM card away from static, dusty and water.
- (d) When inserting or removing SIM card, always make sure that the phone is switched off before you remove the battery. Or the SIM card memory might be damaged. ※

5.4 T-Flash card use

5.4.1 Installing T-Flash card

This mobile supports the T-Flash card feature. Make sure that the T-Flash card has already inserted into mobile. T-Flash card slot locate at the right top of the SIM card.

- 1) Power off the phone; remove battery and other external power connection.
- 2) Insert memory card into card slot as shown in the image.



※ **Note:** No micro SD card is delivered in the product package. The micro SD card is sold separately. ※

5.4.2 T-Flash card use

1) File operation specification

The music and video file are saved in the T-Flash card. If you need operate with the files, the files must be saved in the card firstly. Act as following:

- ◇ Connect PC port and USB port with specific USB line. USB port is on the bottom of the phone.
- ◇ After inserting the USB line, the display shows tip information. Select "Mass storage".
- ◇ Or insert initial T-Flash card into specific card reader, and then insert the reader into USB

port.

- ✧ Select "My computer—movable disk", can use the T-Flash function. Add or delete files in the music / video fold on the card.
- ✧ Stop the USB function on computer; disconnect the USB line with mobile. (*Note: Must stop the function on the computer firstly, then disconnect the line with mobile, otherwise the data will be lost*).

2) T-Flash card directory specification

- ✧ My Music: Save the MP3 music on the folder. The length of the music file is not limit. The quantity depend on the capacity of the T-Flash card.(The folder will be established automatically when select the music, such as add playing music, set alarm clock and so on)
- ✧ Photos: Save the photos through camera (The folder will be established automatically when taking picture).
- ✧ Videos: Save .3gp and .MP4 video files, and the film recorded.(The folder will be established automatically when making a video)
- ✧ Audio: Save the audio record files.(The folder will be established automatically when making a audio record)

5.5 Power On or Off

Make sure the battery is already inserted:

- 1) Power On: Hold down end key until the phone-on image display. After power on, the phone searches for your network automatically. Some SIM card is protected by the PIN number, if you are asker for inputting the PIN number, please enter it, then press left soft key.
- 2) Power Off: Hold down end key until the power-off image display.

※ Note:

- (a) PIN is provided by your service provider. If the PIN is entered incorrectly three times, the SIM card is barred.
- (b) If the phone asks for an unlock code when switched on, enter the unlock code and press left soft key. ※

6 Call Functions

6.1 Making a Call

When you want a call, press the phone keypad to input the area code and phone number. Click left soft key to save, select To SIM1/2, or To phone.

Press and hold down * key until character "+" appears, and then you can dial an international number. (The '+' stands for international dial code.) Press dial key to dial the number. If the number is stored with a name, it appears on the display when you dial the number.

Only in GSM system coverage, you can make an emergency call, even though the phone is locked, without SIM card, or cannot enroll to the system.

※Note: This phone, like any wireless phone, operates using radio signals, wireless, and landline networks as well as user programmed functions, which cannot guarantee connection in all conditions. Therefore, you should never rely solely on any wireless phone for essential communications like medical emergencies. Check with local service providers to make an emergency call.※

● Quick making a call

- i) Enter [Menu]- [Phonebook], select Browse and find the required number;
- ii) Enter [Menu]-[Call center]-[Call history], select corresponding SIM card, select Missed calls, Dialed calls, Received calls list. Scroll the navigation keys to find the required number;
- iii) In standby mode, press right soft key to enter phonebook.
- iv) In standby mode, press dial key to display the last number dialed.
- v) Press dial key to make a call.

※Note: You can quickly search numbers from [Phonebook] via navigation keys and alphanumeric keys. Use navigation keys to move through pages; Use alphanumeric keys to

search by keywords. ※

6.2 Answering a Call

When somebody calls you, the phone rings, and displays the incoming call area. If the caller can be identified, the caller's phone number (or name if stored in your phonebook) is displayed.

When a call is coming, Answer the call by pressing dial keys. The missed incoming calls appear on the display. Press left soft key to check the details of the missed calls or press dial key to call the number. Press end key to end the call.

※**Note:** To answer a call, the function of call forwarding should be disabled, nor is unconditional divert. ※

6.3 H-Free/H-Held

When you are driving, you can enable the phone hands free function during a call. The phone sound will be heard from the speaker. During a call, press right soft key to select "H-Free", then the speaker is enabled. To disable the hands free function, press right soft key to select "H-Held", then the receiver is enabled.

※**Note:** The speaker sound volume maybe loud, so please not use the speaker beside ear. ※

6.4 Call Waiting

You can answer an incoming call while you have a call in progress, if this service is supported by the network and you have set the Call Waiting menu option to activate. You will be notified of an incoming call by a call waiting tone.

6.5 Call Options

6.5.1 During a call

Call with one party, press left soft key to select:

- ◇ Hold/Retrieve single call: pause the call, the caller will not be heard the sound. If you want to retrieve the call, select "Retrieve".
- ◇ End single call: Disconnect the call.
- ◇ New call: input new phone number, press left soft key to save number to phonebook, and press dial key to call the new number. During a call, press middle key to input the number.
- ◇ Phonebook: enter phonebook menu.
- ◇ Call history: enter the call history menu.
- ◇ Messaging: enter message menu.
- ◇ Sound recorder: during the call, record the sound.
- ◇ Mute: turn on/off microphone.
- ◇ DTMF: activate the sending of the DTMF signal, or clean the sending.

6.5.2 Making a Multiparty Call

A multiparty call is a network service that allows up to six people (require network support) to take part simultaneously in a multiparty or conference call. For more information, contact your service provider.

Making a Conference Call:

- 1) Call the first participant in the normal way.
- 2) Call the second participant in the normal way. The first call is automatically put on hold.
- 3) To join the first participant to the multiparty call, press left soft key to access <Option>:
 - ◇ Conference: add incoming callers or a new person to the multiparty call.
 - ◇ Swap: swap the speaking party.
 - ◇ End single call: end the specific connected call.
 - ◇ End all calls: end all calls.
 - ◇ Transfer: assign the specific call to divert.
 - ◇ New call: input new phone number, press left soft key to save number to phonebook,

and press dial key to call the new number. During a call, press middle key to input the number.

- ◇ Phonebook: enter phonebook menu.
 - ◇ Call history: enter the call history menu.
 - ◇ Messaging: enter message menu.
 - ◇ Sound recorder: during the call, record the sound.
 - ◇ Mute: turn on/off microphone.
 - ◇ DTMF: activate the sending of the DTMF signal, or clean the sending.
- 4) To add a new person to the multiparty call, call the person in the normal way, then press left soft key to access <Option>, and select “Conference”.
 - 5) You can add incoming callers by answering the call and pressing <Option>, followed by “Conference”. Repeat as required.
 - 6) During the conference, press left soft key to select:
 - ◇ Hold/Retrieve conf.call: during the conversing with multiparty, if new call comes, hold the conversing call, answer the new call
 - ◇ Split: separate one part from multiparty calls for alone converse.
 - ◇ End single call: end the specific call.
 - ◇ End conf. calls: end all the calls.
 - ◇ New call: input new phone number, press left soft key to save number to phonebook, and press dial key to call the new number. During a call, press middle key to input the number.
 - ◇ Phonebook: enter phonebook menu.
 - ◇ Call history: enter the call history menu.
 - ◇ Messaging: enter message menu.
 - ◇ Sound recorder: during the call, record the sound.
 - ◇ Mute: turn on/off microphone.
 - ◇ DTMF: activate the sending of the DTMF signal, or clean the sending.

※**Note:** Multiparty Call requires network support. ※

7 Phonebook

This feature allows you to store phone numbers and their corresponding names in the memory of your SIM card and phone’s memories, at the same time, provides browsing, adding, managing functions. Your phone can store up to 300 contacts, while SIM card memory depends on various SIM card. There is “1” or “2” icon displayed on the right side of some contacts, it means this contact is stored in SIM1 or SIM2.

7.1 Add new contact

Add new entry and related information to phonebook.

- 1) Press navigation key to move the cursor to “Add new contact”, first, confirm the storage media in <Preferred storage>: To SIM1, To SIM2, To phone.
- 2) If preferred storage is phone, then input Name, Number, Caller picture, Caller ringtone.

※**Note:** If add new entry to SIM card, there only need input name and number.※

Press corresponding alphanumeric keys to search for a number by name. Enter the first letter of the name that you want to find. The phonebook entries are listed, starting with the first entry matching your input. For example, you want to find the number named “zhang san”, then press 9 key four times, the display will show the name list starting with “z”.

You can finish the following operations with the find number:

7.2 View

View the detailed information of the selected number.

7.3 Send text message

Send SMS to the selected number.

7.4 Send multimedia message

Send MMS to the number.

7.5 Call

call the number you select.

7.6 IP dial

Make an IP dial to the selected number by SIM1 or SIM2 card.

7.7 Edit

Edit the selected number.

7.8 Delete

Delete the number from phone or SIM card.

7.9 Copy

Copy the number from the SIM1 card to phone, or copy from SIM1 card to SIM2 card.

7.10 Move

Move the number from SIM1 to phone or move from SIM1 to SIM2.

7.11 Add to Blacklist

Add this contact to the blacklist. You can view the lists in the <Call settings>-<Advance settings>-<Blacklist>.

7.12 Caller groups

- 1) Press navigation key to move the cursor to "Caller groups", confirm to enter, the display will show: Friends, Family, VIP, Business, Others.
- 2) Select group name by navigation key, press left soft key to view members, then press left soft key to view, add, remove the members.
- 3) Select group name by navigation key, press left soft key to send SMS.
- 4) Select group name by navigation key, press left soft key to select group settings, select ring tone, associate picture, associate video, which can discriminate the caller group.

7.13 Phonebook settings

Set the phonebook parameter.

- ✧ **Preferred storage:** set the preferred storage media: SIM1/2, Phone or all.
- ✧ **Speed dial:** on or off the function. Allows you to assign up to eight phone numbers from Phonebook that you use most frequently to the number keys (2~9), and then dial them easily whenever you want, by pressing and holding the associated number key.
- ✧ **My number:** edit and send my number.
- ✧ **Extra numbers:** the menu is used to save the mobile used SIM1/2 owner number, fixed dial. It can set owner number of current using. The menu can set the name and number of SIM card. It can be operated: Edit. If your SIM card support, you can set the fixed dial number. If the function is activated, you can only dial the number in the fixed dial list. Before enable the feature, need input PIN2. Enter fixed dial list, you can add, edit the

number. When save the number, need input PIN2.

※**Note:** For avoiding change the fixed dial status by others, after setting, please power off then power on. ※

- ◇ **Memory status:** show the used storage and total storage of SIM card and phone.
- ◇ **Copy contacts:** copy the number from the SIM1 card to phone, or copy from SIM1 card to SIM2 card.
- ◇ **Move contacts:** move the number from SIM1 to phone or move from SIM1 to SIM2.
- ◇ **Delete all contacts:** delete all the numbers from phone or SIM card.


8 Messaging

User can send text and multimedia messages.

8.1 Write message

8.1.1 Text message

Each text message has limitation in length, that is 1224 English characters. If exceed the limitation, the message will be cut to many messages for sending.

Screen icon  that displays in standby mode refers to any new message just received and unviewed. You can set the message tone to remind you of receiving any new message. No more messages can be received when the Inbox is full. You can receive the new message after you have deleted some old ones to release memory space.

Write new message for sending. During editing the message, press left soft key to operate:

- ◇ **Send to:** enter number or add from phonebook. You can add many numbers.
- ◇ **Input method:** select input method.
- ◇ **Advanced:**
 - **Insert object:** select multimedia object into the text.
 - **Insert number:** insert the contact number from phonebook into message.
 - **Insert name:** insert the contact name from phonebook into message.
 - **Insert bookmark:** insert bookmark into text.
 - **Text format:** select text style, alignment and new paragraph.

- ◇ **Save to Drafts:** save the message to draft of SIM1 or SIM2.

After editing the message, select “Send to” and select the number, press left soft key to access:

- ◇ **Send:** send the message to the selected numbers.
- ◇ **Edit recipient:** edit the number.
- ◇ **Remove recipient:** delete this number.
- ◇ **Remove all recipients:** delete all the numbers.
- ◇ **Save to Drafts:** save the message to draft of SIM1 or SIM2.

8.1.2 Multimedia message

You can write a new MMS message through the menu, such as insert text, image, audio and video. Before using MMS, you need set the MMS parameter, for details please contact with your service provider to confirm that if you can use the MMS service and how to apply it. Single MMS message limitation is 100KB, if the MMS message is out of the limitation, the phone will not receive it. If you insert image, audio or video that make the MMS message is out of limitation, the phone will show the prompting information.

You maybe can not copy, update, send or forward some image, picture, ring or other multimedia content that is protected by copyright.

After enter writing message interface, press left soft key to operate as following:

- ◇ **Send to:** enter number or add from phonebook. You can add many numbers.
- ◇ **Input method:** select input method to write the message.
- ◇ **Add picture:** insert picture that saved on the phone or memory card into the message. After adding the picture, there will show the “Edit picture” and “Remove picture” after the menu.
- ◇ **Add sound:** insert the audio file that saved on the phone or memory card into the message. After adding the audio, there will show the “Edit audio” and “Remove audio” after the menu.

- ✧ **Add video:** insert the video file that saved on the phone or memory card into the message.
 - ✧ **Add subject:** input the message subject. After adding the subject, there will show the “Edit subject” after the menu.
 - ✧ **Preview MMS:** view the edited MMS message.
 - ✧ **Slide options:**
 - **Add slide before:** add new slide before the current slide, and edit new message content. After add the slide, there will show “Delete slide” and “Next slide” after the menu.
 - **Add slide after:** add new slide after the current slide, and edit new message content. After add the slide, there will show “Delete slide” and “Next slide” after the menu.
 - **Slide timing:** set the slide time.
 - ✧ **Advanced:**
 - **Add attachment:** insert the attachment that saved on the phone or memory card into the message. After adding the attachment, there will show the “Edit attachment” and “Remove attachment” after the menu.
 - **Add bookmark text:** add website address into the message.
 - ✧ **Save to Drafts:** not send the message, and save it on [Drafts] folder.
- After editing the message, select “Send to” and select the number, press left soft key to access:
- ✧ **Send:** send the message to the selected numbers.
 - ✧ **Send options:** set the sending parameter, such as validity period, Delivery report, Read report, Priority.
 - ✧ **Edit recipient:** edit the number.
 - ✧ **Remove recipient:** delete this number.
 - ✧ **Remove all recipients:** delete all the numbers.
 - ✧ **Change to Cc:** change the send mode of this number to Cc.
 - ✧ **Change to Bcc:** change the send mode of this number to Bcc. If you input bcc number, the MMS message will send by encryption mode.
 - ✧ **Save to Drafts:** save the message to draft of SIM1 or SIM2.

8.2 Inbox

Through the menu you can read received SMS and MMS messages of SIM1 and SIM2. There is “1” or “2” icon displayed on the right side of every messages, it means this message is received by SIM1 or SIM2.

To the message list, select one and open it, press left soft key:

- ✧ **View:** view the message content.
- ✧ **Reply by SMS or MMS:** replay the message.
- ✧ **Call sender:** call the number that sends this SMS.
- ✧ **Forward:** send the message to others.
- ✧ **Delete:** delete the selected message.
- ✧ **Delete all:** delete all messages.
- ✧ **Save to Phonebook:** save this new number to the phone or replace existing.
- ✧ **Advanced(SMS):**
 - **Copy to phone/Copy to SIM:** copy the message to phone/SIM1/2.
 - **Move to phone/Move to phone:** move the message to phone/SIM1/2.
 - **Copy all:** select the copy mode then copy all the messages.
 - **Move all:** select the move mode then move all the messages.
- ✧ **Details(MMS):** show the details of the MMS message.

8.3 Drafts

Select a draft message, press left soft key to select the menu: **View, Send, Edit, Delete, Delete all, Advanced.** The operation details please refer to [Write message].

8.4 Outbox

The outbox stores any messages that you have failed to delivery. For the messages in this box, you can access options: View, Resend, Edit, Delete, Delete all, Advanced. The details refer to [Inbox].

8.5 Sent messages

Show the sent messages you saved.

8.6 Delete messages

Delete messages in inbox, drafts, outbox, sent messages or all messages.

8.7 Broadcast message

This network service allows you to receive text messages on various topics, such as the weather or traffic. Messages are displayed immediately as they are received, you can directly read the messages. At present, only a few networks support this feature. For further information, contact your service provider.

Select "SIM1 broadcast message" or "SIM2 broadcast message". The display shows options: Receive mode, Read message, Languages, Channel setting. Press navigation keys to select option and press middle key to access.

- ✧ **Receive mode:** power on or off the function.
- ✧ **Channel settings:** select, add, edit or delete the old channel.
- ✧ **Languages:** select the message language.
- ✧ **Read message:** read the broadcast message.

8.8 Message settings

8.8.1 Text message

Set the SMS parameter. Select "SIM1 message settings" or "SIM2 message settings".

✧ **Profile settings**

i) Confirm to access, the display show "Profile 1", "Profile 2/3/4".

ii) "Profile 1" operation:

- **Profile name:** edit the profile name.
- **SMSC address:** set short message center number. Only input the number, the message can be sent or received.
- **Valid period:** if messages can not be delivered from your message center due to some reason (i.e. your phone is switched off). Select the period in which the service center tries to deliver the message.
- **Message type:** select the message send type.

iii) "Profile 2/3/4" is same with "Profile 1".

✧ **Voice mail server**

Voice mail server is provided by ISP. It will make you not missing any call. It likes message machine, you can check the message at any time. In standby mode, long press 1 key. Before use the function, please apply with ISP.

- **Call voice mail:** connect to voice mail number, if successfully connect, you will hear the message.
- **Edit:** edit the voice mail name, input name and voice mail number.

✧ **Common settings**

Set the message sending parameter.

- **Delivery report:** Informs you whether or not your message has been delivered. To enable or disable this option, choose the On or Off.
- **Reply path:** allow the recipient of your message to send you a reply via your message center, if your network supports this service. To enable or disable this option, choose the On or Off.
- **Save sent message:** save the sent message in the "Sent message".

✧ **Memory status:** show the storage status of SIM card and phone.

✧ **Preferred storage:** set the preferred storage media.

✧ **Preferred connection:** select prefer GPRS, GSM or GSM only.

8.8.2 Multimedia message

Set the MMS parameter.

- ✧ **Data account:** select server to send or receive MMS message.
- ✧ **Common settings:**
 - **Compose:** set creation mode is free or restricted, set whether resize the picture, set whether close the auto signature function.
 - **Sending:** set send parameter.
 - **Retrieve:** set retrieve parameter, including: home network immediate / rejected / delayed setting, roaming as home / delayed / rejected setting, Filter: allow or reject anonymous, or advertisement to filter received message. set read report parameter, set delivery report on or off.
 - **Preferred storage:** set the preferred storage media.
 - **Memory status:** show the usage, used space and free space of the phone memory.

8.8.3 Service message

Set enable push and service loading.

9 Call center

In this menu, you can view the calls you missed, dialed and received, as well as the length of your calls.

9.1 Call history

There is “1” or “2” icon displayed on the right side of every call logs, it means this call is dialed or received by SIM1 or SIM2.

9.1.1 Missed calls

This menu lets you view the SIM1 card missed call number, there is showing most 20 numbers. You can View, Call, Send SMS, Send MMS, Save to Phonebook, Add to Blacklist, Edit before call, Delete.

9.1.2 Dialed calls

This menu lets you view the SIM1 card recent numbers you dialed, there is showing most 20 numbers. You can View, Call, Send SMS, Send MMS, Save to Phonebook, Add to Blacklist, Edit before call, Delete.

9.1.3 Received calls

This menu lets you view the SIM1 card recent numbers you received, there is showing most 20 numbers. You can View, Call, Send SMS, Send MMS, Save to Phonebook, Add to Blacklist, Edit before call, Delete.

9.1.4 Delete call logs

This menu lets you delete the SIM1 card missed call, dialed call, received call, or all the calls.

9.2 Call settings

9.2.1 SIM1 call settings

9.2.1.1 Call waiting

This feature means you are informed of a second incoming call by an audible tone in the earpiece. Activating this feature enables you to specify whether or not answer the second incoming call. Deactivating this feature, you are not informed of a second incoming call by an audible tone in the earpiece, and the caller will hear a busy tone (If the divert feature is activated,

the second incoming call is automatically diverted to another phone.)

9.2.1.2 Call divert

This network feature allows you to divert your incoming calls to another number. If you can not answer the phone, forward your incoming calls.

- 1) **Divert All Voice Calls:** when activated, all of your incoming calls will be diverted. You can Interrogate, Activate or Deactivate this feature.
- 2) **Divert If Unreachable:** when power off or not in the network covering area, the call will be diverted into specific number. You can Interrogate, Activate or Deactivate this feature.
- 3) **Divert If No Answer:** when activated, calls will be diverted if you do not answer your phone. You can Interrogate, Activate or Deactivate this feature.
- 4) **Divert If Busy:** when activated, calls will be diverted when you are already in a call. You can Interrogate, Activate or Deactivate this feature.
- 5) **Divert All Data Calls:** divert all incoming calls into new number, or voice mail. You can Interrogate, Activate or Deactivate this feature.
- 6) **Cancel All Divert:** when activated, calls will be diverted if your phone is off or if you are out of coverage. You can Interrogate, Activate or Deactivate this feature.

9.2.1.3 Call barring

The call barring network service allows you to restrict your calls. This feature needs call barring password supplied by your service provider.

- 1) **Outgoing Calls:** calls cannot be made except emergency call.
- 2) **Incoming Calls:** calls cannot be received.
- 3) **Cancel All:** cancel all the limitation, it need input barring password.
- 4) **Change Barring password:** change the barring password.

※ **Note:** The call barring password is provided by your service provider. ※

9.2.1.4 Line switching

This is a network service. If your SIM card supports one card two number functions, you can select line 1 or line 2 for making a call. If your card does not support the service, select "line 1" to dial/ receive calls. When select "line 2", you cannot dial calls.

9.2.2 SIM2 call settings

Please refer to "SIM1 call settings".

9.2.3 Advance settings

9.2.3.1 Black list

- 1) **Mode:** on/off this function.
- 2) **Black list number:** input the numbers you want to shield, then you cannot get this number's call.

9.2.3.2 Auto redial

If activate the function, when dial failed, the phone will dial the number automatically.

9.2.3.3 IP dial

Set IP prefix number. Enter the IP number, press <Option> and select Accept. Selecting Discard rejects your setting.

9.2.3.4 Call time reminder

If activate the function, during the calling, there is voice prompt to show the call time.

9.2.3.5 Answer mode

set answer mode, Any key. Press left soft key to set On or Off.

10 Settings

Many different features of your phone can be customized to suit your preferences.

10.1 Dual SIM switch

Select SIM switch mode.

- ✧ **Manually selected by user:** In this mode, when the phone is power on, there is a prompt pop-up to select SIM mode.
- ✧ **Automatically decided by SIM cards:** when SIM1 and SIM2 are all valid, or only SIM1 or SIM2 is valid, the phone will select SIM mode automatically.

10.2 Dual SIM settings

Set the SIM card mode:

- ✧ **Dual SIM open:** SIM1 and SIM2 are valid at one time.
- ✧ **Only SIM1 open:** only SIM1 is valid.
- ✧ **Only SIM2 open:** only SIM2 is valid.

10.3 Phone settings

Set the phone parameter.

10.3.1 Time and date

Set the time and date of the phone.

- ✧ **Set home city:** select the home city in the list.
- ✧ **Set time/date:** edit the time or date, and set daylight saving is on or off.
- ✧ **Set format:** set the time format or date format.
- ✧ **Auto update time:** select on/off the function, or select first confirm.

10.3.2 Schedule power on/off

Set the phone scheduled powering on or off. When the set time arrive, the phone will power on or off automatically. Press left soft key to select:

- ✧ **Status:** enable or disable the function of powering on/off.
- ✧ **Power on/off:** select power on or off.
- ✧ **Edit power on/off:** set the scheduled time of power on/off.

10.3.3 Language

It allows you to select language for the display text.

10.3.4 Preferred input method

It allows you to set the default input mode. Use navigation keys to select input mode and press left soft key to confirm.

10.3.5 Display

Set the display parameter in standby mode.

- ✧ **Wallpaper:** set the wallpaper in standby mode. The image can be selected from system, or from the file manager menu.
- ✧ **Screen saver:** enable or disable the screen saver. If enable the screen saver function, select waiting time, and the animation of the screen saver.
- ✧ **Show date and time:** select on or off. If enable the function, the date and time will be shown on the standby display.

10.3.6 Dedicated key

Set the navigation keys' function in standby mode. Select the dedicated navigation key, such as "Down", press middle key to access shortcuts list, and then select the preferred one. By the same way, set the "Up", "Left", "Right".

10.3.7 Flight mode

After setting the flight mode, you need not power off the phone on the plane, at the same time cannot make a call.

10.3.8 UART settings

Select SIM card 1 or SIM card 2, the settings used to determine the current uart port which accepts AT is used by SIM 1 or SIM 2.

10.3.9 Misc. settings

Set LCD backlight.

10.4 Network settings

Set the network selection mode. Select "SIM1 network setup" or "SIM2 network setup".

✧ Network selection

- New Research: search new network.
- Select network: search new network, and show the network list.
- Selection Mode: set "Automatic" or "Manual".

✧ Preferred networks: set the preferred network.

10.5 Security settings

The menu allows encrypting with some phone functions. It can avoid your phone or SIM card misused. When you input password, the password will be shown with "*". If input wrong number, press end key to clean. You can change PIN1, PIN2, or phone lock password and so on.

10.5.1 SIM1 security

10.5.1.1 PIN lock

If activate PIN lock, before you use SIM1 card, you need input correct PIN.

10.5.1.2 Change PIN/PIN2

The menu can change SIM1 card PIN, PIN2 password. After input correct password, enter new password for two times.

10.5.2 SIM2 security

Please refer to "SIM1 security".

10.5.3 Phone security

10.5.3.1 Phone lock

If activate Phone lock, before you use phone, you need input correct phone password.

10.5.3.2 Change password

Change phone password.

10.5.4 Auto keypad lock

Set the keypad lock mode. You can activate or disable the function.

10.6 Connectivity

10.6.1 Bluetooth

The phone support Bluetooth communication mode.

- ✧ **Power:** set the function on or off.
- ✧ **Visibility:** Select On or Off. If disable the feature, the phone will not be used as a BT device.
- ✧ **My device:** show my BT device list. If the list is null, press OK key to search the new device. Select one device, press left soft key to access:
 - Connect: connect to this device.
 - Set as default audio device: set this device as default audio device.
 - Service list: show the device service list.
 - Rename: edit the device name.
 - Authorize: select Always ask, Always connect or Always reject.
 - Delete: delete the selected device.
 - Delete all: delete all online devices.
- ✧ **Search audio device:** Before search Bluetooth device, power on Bluetooth function. After searching new device, connect the new device in pairs according to the display information. When successfully connected, the devices can communicate.
- ✧ **My name:** edit the device name.
- ✧ **Advanced:** set Bluetooth parameter.
 - Audio Path: set the audio path, you can select leave in phone or forward to BT device. Example: if connect the BT headset, you can set forward to BT headset.
 - Storage: select storage location of transfer file from Bluetooth.
 - Sharing permission: set the right as Full Control, or Read Only.
 - My address: show the device address.

10.6.2 Data account

It can support to view Internet webpage and MMS service. Select one account from the list, press left soft key to edit:

- Account name: edit account name.
- APN: edit APN name.
- User name: input the network connection account (provided by your network service provider).
- Password: input your account password (provided by your network service provider).
- Auth. type: select authentication type: normal or secure.
- SIM selection : select the using SIM card.
- Advanced settings

10.7 Restore factory settings

In this menu enter your phone code (the initial value is 1122) and press <Accept> to reset your phone to its default settings.

10.8 Sound effects

Set audio effect.

11 Multimedia

11.1 File manager

For saving more information, the phone support memory card. The card can be installed at any time. The menu can manage the files on the phone.

Enter File Manager menu, show storage media list. Select one, the total storage and used storage will be shown on the up display, and an icon shows use proportion on the left-up.

11.1.1 Phone

- 1) Select "Phone", press left soft key to access [Options]:
 - ◇ **Open:** open the folder and show the file list.
 - ◇ **Format:** format the phone memory.

※**Note:** After formatting, all date saved on the phone will be lost forever.※
- 2) Select one folder, press left soft key to access:
 - ◇ **Open:** open the folder and show the file list.
 - ◇ **New folder:** create a new folder under the current folder.
 - ◇ **Rename:** Rename the selected folder.
 - ◇ **Delete:** delete selected folder.
 - ◇ **Sort by:** sort the selected folder.
- 3) Select one file under the folder, press left soft key to access:
 - ◇ **View:** view the photo, the menu is valid to image file.
 - ◇ **Play:** play the video file. The menu is valid to audio, video file.
 - ◇ **Open ebook:** open the e-book file. The menu is valid to e-book file.
 - ◇ **Use:** if the selected file is a ring, then send it to profile.
 - ◇ **Send:** send it to MMS or bluetooth.
 - ◇ **Details:** show the file details.
 - ◇ **Rename:** rename the selected file.
 - ◇ **Copy:** copy the file to specific folder.
 - ◇ **Move:** move the file to specific folder.
 - ◇ **Delete:** delete the selected file.
 - ◇ **Delete all files:** delete all files of the folder.
 - ◇ **Sort by:** sort the file on the current folder.

11.1.2 Memory card

If the phone is inserted into memory card, the display will show "Memory Card". Select the menu, press left soft key to access:

- ◇ **Open:** open the folder and show the file list.
- ◇ **Format:** format the phone memory.
- ◇ **Rename:** Rename the selected folder.
- ◇ **Details:** show the file details.

※**Note:** After formatting, all date saved on the memory card will be lost forever.※

The operation of the folder and file, please refer to the details of chapter "Phone".

Note: Our phone supports USB2.0 standard. If your computer system is Windows2000 or Windows XP or above, the computer will recognize the USB automatically without installing driver. ※

11.2 Camera

With the phone camera feature, you can take picture at any time without carrying digital camera. Enter the menu, the display shows the preview image.

Press left soft key to access:

Photos	To view the saved photos.
Camera Settings	Shutter Sound: sound 1, sound 2, sound 3, Off.
	EV: EV-2 ——EV+2.
	Anti—flicker: 50Hz(default), 60Hz.
	Contrast: High, Medium, Low.
	Delay Time: 5s, 10s, 15s or Off.
	Cont.Shot: 1 Shot , 3 Shot , 5 Shot and Off.
Image Settings	Size: 640*480, 320*240,128*160,160*120,80*60.
	Image Quality: High, Normal, Low.
White Balance	Auto, Daylight, Tungsten, Fluorescent, Cloud, Incandescence.
Scene Mode	Auto, Night.
Effect Settings	Normal, Grayscale, Sepia, Sepia green, Sepia blue, Color invert.
Storage	Phone, Memory Card.
Restore Default	You can restore the recorder to factory settings.

Keys	Functions
Left Soft Key (LSK)	To open Options menu
Right Soft Key (RSK)	Back to main menu
Navigation key	Left : to reduce EV (Brightness) Up: to zoom in Right : to increase EV (Brightness) Down: to zoom out
OK key	To take a picture
Shortcut	“1” button: To set the image size: 640*480, 320*240,128*160,160*120, 80*60 “2” button: To set the image quality: Good (G), Low (L) and Normal (N). “4” button: To set the white balance. “6” button: To set the delay timer : 5s, 10s, 15s and Off. “7” button: To set continue shot (1,3,5) each take a picture and off. “#” button : Show/hide the icons. All of the features above can be seen on the top of the capture screens.

11.3 Image viewer

Show image list, press left soft key to do: View, Image information, Browse style, Send, Use as, Rename, Delete, Sort by, Delete all files, Storage.

11.4 Video recorder

Through the menu, you can record video by yourself. Press middle key to start recording. During scanning, press left soft key to access:

- ✧ **CamCorder settings:** set the record parameter.
 - White balance: set white balance mode.
 - EV: set the light compensate value.
 - Night Mode: set night on or off.

- Anti-flicker: set frequent.
- ✧ **Video Setting:** set the video quality.
- ✧ **White Balance:** set the white balance value.
- ✧ **Effect Setting:** set the video effect.
- ✧ **Storage:** select the video storage path.
- ✧ **Restore Default:** restore default value.

Press middle key to start recording. During recording, press right soft key to end, start next recording. The file is saved as *.avi file.

11.5 Video player

The menu supports play video file. When the file list is null, select the storage path first, and then select the video folder. There will update the video file list, select one file from the list, press left soft key to play. Press end key to exit and return list. The phone supports the AVI, 3GP and MP4 video files.

Select one video file, press middle key to operate:

- ✧ **Play:** play the file.
- ✧ **Send:** send file as MMS or via Bluetooth.
- ✧ **Rename:** rename the file.
- ✧ **Delete:** delete the selected file.
- ✧ **Delete all files:** delete all video files.
- ✧ **Sort by:** sort the file by name, type, time, size or none.
- ✧ **Storage:** select file from phone or T-Flash card.

11.6 Audio player

Through the menu, you can play music or ring tone file. Press left soft key to access music list, press left soft key to operate:

- ✧ **Play:** play the music file.
- ✧ **Details:** show the file details.
- ✧ **Refresh list:** refresh the list.
- ✧ **Settings:** set the parameter.
 - Pre. play list: select the storage media.
 - List audio gen: set On or Off.
 - Repeat: set the play repeat mode.
 - Shuffle: set whether play music stochastic.
 - Background play: power on or off background play.
 - Bluetooth settings:
 - BT stereo output: set BT stereo output: on or off.
 - BT stereo headset: set whether output from headset.
 - Audio effect: set audio effect and equalizer.

During playing the music, press left or right navigation key to next music file; long press left or right navigation key to fast forward or Rewind; press middle key to pause/play the playing file; press up and down navigation key to adjust volume.

11.7 Sound recorder

You can record sound through the menu. The sound recorded can be set as ring tone for call or message. Press left soft key to access:

- ✧ **New record:** begin a new recording.
- ✧ **List:** show all the recording files.
- ✧ **Settings:** set the storage media, saving format.

Select "New record" to begin recording. During recording, the display shows record time. Press left soft key to pause recording, and then press again to restore. Press right soft key to stop recording, then select whether to save it. The record file is saved as .amr format. After recording, press left soft key to select "List", select the file and press middle key to access:

- ✧ **Play:** play the record.
- ✧ **Append:** begin a new record, and the new record is after the selected record, they are saved on one file.
- ✧ **Rename:** rename the record.

- ✧ **Delete:** delete the record.
- ✧ **Delete all files:** delete all records.
- ✧ **Use as:** use to User profiles.
- ✧ **Send:** send the file as MMS or via Bluetooth.

11.8 FM radio

Before starting FM radio, insert the earphone into left side of the phone. The earphone line equates in FM radio antenna. Please let it hang freely. Open the FM radio, the phone will show the channel frequency that the phone searched automatically. You can press left/right navigation keys to change the channel frequency. Press up and down navigation key to adjust volume. Press middle key to on/off the loudspeaker. And press right soft key to exit, and press left soft key to operate:

- ✧ **Channel List:** show all radio channels. Press OK key to edit the frequency, the value is among 87.5MHZ and 108.0MHZ.
- ✧ **Manual Input:** input channel manually.
- ✧ **Auto Search:** search channel automatically.
- ✧ **Settings:** set the radio player parameter

12 Entertainment

For making some funny, the phone designs some games. The details of operation please refer to game help file.

13 User profiles

The menu allows setting different prompt mode for call and message in different environment. Press left soft key to access, select profile through up/down navigation key.

13.1 General

Set the phone ring tone and other prompt mode as your prefer.

- 1) **Activate:** activate and set as default mode.
- 2) **Customize:** Set Alert type, Ring type, SIM1/2 incoming call, Power on, Power off, SIM1/2 Message tone, Keypad tone and the volume of Ring tone, Key tone.
- 3) **Reset:** reset to default settings.

13.2 Silent

Activate silent mode.

13.3 Meeting

Operation details are same with [General].

13.4 Outdoor

The ring tone volume is 7 levels, and Ring type is "Repeat". Operation details are same with [General].

13.5 My style

Set your own style settings, and rename it.

14 Organizer

14.1 Calendar

Through the calendar, you can view the date. Press left soft key to access:

- ✧ **Jump to date:** directly jump to a specific date.
- ✧ **Go to today:** return to today.
- ✧ **Go to weekly/monthly view:** view the calendar through weekly or monthly mode.

14.2 Alarm

Through the menu, the phone sends out the noisy bell sound at specific time. If the specific time arrives, the phone will ring even if the phone is powered off. Press left soft key to access:

- ✧ **On/Off:** power on or off the alarm through left or right navigation key.
- ✧ **Edit alarm:** set the alarm time.
- ✧ **Repeat:** select the ring mode: Once, Everyday, Days.
- ✧ **Alarm tone:** set the alarm audio, tone or FM radio, and select the tone.
- ✧ **Snooze:** set continuous alarm time.
- ✧ **Alert type:** select the alert type.

14.3 World Clock

The menu allows inquiry time of world each place. When you are outside the country, you can change the system time into the locating place time.

Press left/right navigation key to view the country date and time at different longitude. The country name displays on the upper screen, and the date and time displays below. A world map displays in the middle. Select the country, press left soft key to access "Daylight saving time for foreign city". Set the feature is On or Off.

14.4 Flashlight

On or off the flashlight function. The flashlight is on the front of the mobile.

15 Services

15.1 WAP Browser

Wireless Application Protocol, a kind of browse Internet webpage mode. It makes you browse the webpage in any place and time. You can enjoy the resource of Internet, and grasp any information through your mobile. You need apply the service to your network service provider before you use the service.

- ✧ **Homepage:** browse the homepage.
- ✧ **Bookmarks:** enter the network address set advanced.
- ✧ **Input address:** input a new address.
- ✧ **Recent pages:** enter the network address history list.
- ✧ **Settings:** set the WAP browser connection mode.

16 Text input settings

16.1 Key functions for Input Mode

- 1) Digital key 1~9: show different character with different input mode.
- 2) Navigation key: move cursor.
- 3) 1 key: in ABC, abc Mode, input “.,-?!’@:#\$/_1” in turn.
- 4) 0 key: in Input Mode, press to enter space. In Number Mode, press to enter 0; In ABC/abc Mode, press one time to enter enter space, press 2 times continuous to 0.
- 5) * key: open punctuation mark list.
- 6) # key: change input mode.

16.2 Multitap ABC mode

When typing in Multitap ABC or abc mode, press the key which corresponds to the desired letter several times until the letter you want appears.

Example: input “how”, in Multitap abc mode, you press numeric key 4 two times to show “h”; press numeric key 6 three times to show “o”; press numeric key 9 once to show “w”.

ABC means to enter uppercase letters; abc means to enter lowercase letters.

17 Guidelines for safe and efficient use

17.1 Care and maintenance

Your phone is a product of superior design and craftsmanship and should be treated with care. By following the warranty obligations and by caring for your mobile, you can enjoy it for many years:

- 1) Keep the phone dry. Precipitation, humidity and liquids containing minerals will corrode the electronic circuits;
- 2) Do not use or store the phone in dusty areas as the dust could obstruct or damage the moveable parts;
- 3) Do not store the phone in hot areas. High temperatures can shorten the life of electronic devices, damage batteries and warp or melt certain plastics;
- 4) Do not store the phone in cold areas, because moisture can form inside the phone when temperature rises, which may damage the electronic circuits;
- 5) Do not drop, knock, bump or shake the phone. Rough handling may damage the internal circuits. Put the phone in a safe place when you do not use it;
- 6) Use a slightly cloth damping with clean water or neutral soap to clean your phone housing. Never use any chemical or abrasive cleaners, as they could damage the phone;
- 7) Do not paint your phone as the paint could obstruct any moving parts and prevent normal use;
- 8) Use only approved batteries and accessories. Use of any unauthenticated batteries and accessories could damage your phone and may be dangerous;
- 9) If there’s something wrong with your phone or its accessories, do not attempt to dismantle the phone. Contact qualified service personnel to repair your phone.

17.2 Battery maintenance

- 1) A new battery will require two or three times full charge/discharge cycles in order to achieve its optimum performance.
- 2) Batteries typically have several hundreds charge cycles in their life span. When the talk time and standby time decrease obviously, replace a new battery.
- 3) If left unused, a fully charged battery will discharge itself in approximately 24 hours.
- 4) To extend the life of the battery, you can get the battery fully discharge until the phone turns itself off. Do not attempt any other unapproved discharge ways.
- 5) When the battery level is low and only a few minutes talk time remain, a warning signal will sound. When the battery is completely discharged, your phone will turn off.

18 Troubleshooting

If problems occur when using the phone, try to find a solution here first.

Problems	Reasons and Solutions
Can't switch on	<ul style="list-style-type: none"> ■ Press and hold end key until image appears on the display. ■ Check the battery contacts. Remove and insert battery and switch your phone on again. ■ Check the battery charge level.
Can't connect to network	<ul style="list-style-type: none"> ■ Move into an area of better coverage. ■ Beyond the network cover area; ■ Contact your service provider if your SIM card is invalid.
The audio quality of the call is poor	<ul style="list-style-type: none"> ■ Press navigator key to increase the volume when you are in a call. ■ Check the signal strength indicator on the display. ■ The line is busy and can not be connected to network; you can not make a call.
Standby time too short	<ul style="list-style-type: none"> ■ When failing to connect to network, the phone will keep searching base station that consumes much battery and reduces standby time. Move to an area with stronger signal strength or switch your phone off temporarily. ■ Replace the battery.
SIM card error	<ul style="list-style-type: none"> ■ Make sure that the chips in SIM card are not damaged; use the clean cloth to scratch it. ■ Make sure that SIM card is inserted correctly. ■ SIM card invalid. Contact your service provider.
Can not dial calls	<ul style="list-style-type: none"> ■ Make sure that the number you dialed is available and the dial key has been pressed. ■ Make sure that there is enough money to make a call. ■ Make sure that SIM card is valid. ■ Fixed Dial is set or has call barring feature turned on. Deactivate fixed dial function or call barring.
Can not receive calls	<ul style="list-style-type: none"> ■ Make sure that your phone has connected to network (Check if the network is too busy or invalid). ■ Make sure that there is enough money to receive the call. ■ Make sure that SIM card is valid. ■ Check call divert settings and incoming call barring settings.
The battery won't charge	<ul style="list-style-type: none"> ■ Make sure that the battery is inserted correctly. Securely connect the charger to the phone. ■ Only charge the battery in an environment where the temperature does not go below -10°C or above 55°C. ■ The battery or charge need to be changed.
Can not set some functions	<ul style="list-style-type: none"> ■ The operation is wrong. ■ The network providers do not support the function, or you don't apply the function.

19 Warning

FCC RF Exposure Information and Statement:

The SAR limit of USA (FCC) is 1.6 W/kg averaged over one gram of tissue.

Product, model number: i125 (FCC ID: WA6I125) has also been tested against this SAR limit. The highest SAR value reported under this standard during product certification for use at the head is 0.742 W/kg and when properly worn on the body is 1.589 W/kg. The device was tested for typical body-worn operations with the back of the handset kept 1.5 cm from the body. To maintain compliance

with FCC RF exposure requirements, use accessories that maintain a 1.5 cm separation distance between the user body and the back of the handset. The use of belt clips, holders and similar accessories should not contain metallic components in its assembly. The use of accessories that do not satisfy these requirements may not comply with FCC RF exposure requirements, and should be avoided.

This device complies with part 15 of the FCC Rules. Operation is subject to the following two conditions:

- (1) This device may not cause harmful interference, and
- (2) This device must accept any interference received, including interference that may cause undesired operation.

Any Changes or modifications not expressly approved by the party responsible for compliance could void the user's authority to operate the equipment.

Note: This equipment has been tested and found to comply with the limits for a Class B digital device, pursuant to part 15 of the FCC Rules. These limits are designed to provide reasonable protection against harmful interference in a residential installation. This equipment generates uses and can radiate radio frequency energy and, if not installed and used in accordance with the instructions, may cause harmful interference to radio communications. However, there is no guarantee that interference will not occur in a particular installation. If this equipment does cause harmful interference to radio or television reception, which can be determined by turning the equipment off and on, the user is encouraged to try to correct the interference by one or more of the following measures:

- Reorient or relocate the receiving antenna.
- Increase the separation between the equipment and receiver.
- Connect the equipment into an outlet on a circuit different from that to which the receiver is connected.
- Consult the dealer or an experienced radio/TV technician for help.