

NOTE:

- R/C Motormorph™ Vehicle is built in with electronic overcurrent protection. Under abrupt situation or abnormal use, the vehicle's operation will be cut off automatically. In such case, leave the vehicle to rest for 30 seconds and then press the vehicle's ON/OFF switch to OFF and then ON again to reset.
- R/C Motormorph™ Vehicle is also built with an auto timer cutoff system to preserve battery power. Whenever the vehicle is left unattended for prolonged duration, the vehicle's operation will be cut off automatically. To reset, simply press the vehicle's ON/OFF switch to OFF and then ON again.
- Do not leave the Controller on any surfaces with the sticks facing down or obstructed, which can cause false starts or excessive battery drainage.
- Effective remote control distance is 60 feet outdoor depending on environmental and climatic conditions. Be sure to keep the vehicle within control range, especially in water play mode.
- Special care should be taken in water mode in not to allow the vehicle's antenna to get submerged. This can cause drastic degradation in remote control responses.

R/C Motormorph™
The Innovative 4 Channels Radio Control All Terrain Vehicle
Conquer All Terrain with Robotic Transformation!!

Age 8+

Instruction Manual

CAUTION – ELECTRICALLY OPERATED PRODUCT:
Not recommended for children under 8 years of age. As with all electric products, precautions should be observed during handling and use to prevent electric shock.

IMPORTANT SAFETY INFORMATION:

- Always turn the R/C Motormorph™ Vehicle OFF before trying to pick it up.
- Keep R/C Motormorph™ Vehicle clear from body parts, clothings, and hairs at all times.
- Keep fingers and hands away from the spinning wheels and transforming wheels.
- Always drive the R/C Motormorph™ Vehicle in wide open space without any obstacles.
- Do not drive the R/C Motormorph™ Vehicle towards people or animals.
- Adult supervision is recommended.

BATTERY SAFETY INFORMATION:

- Batteries should always be replaced by an adult.
- Do not mix old and new batteries.
- Do not mix alkaline, standard(Carbon-Zinc), or rechargeable(Nickel-Cadmium or Nickel Metal Hydride) batteries.
- Non-rechargeable batteries are not to be recharged.
- Rechargeable batteries are to be removed from the toy before being charged(if removable).
- Rechargeable batteries are only to be charged under adult supervision(if removable).
- Different types of batteries or new and used batteries are not to be mixed.
- Only batteries of the same or equivalent type as recommended are to be used.
- Batteries are to be inserted with the correct polarity.
- Exhausted batteries are to be removed from the toy.
- The supply terminals are not to be short-circuited.
- Do not dispose of battery in fire. Battery may explode or leak as a result.
- Remove batteries from the toy before prolonged storage.
- Dispose of used batteries properly.
- Please retain this information for future reference.

FCC/EMC REQUIREMENTS:

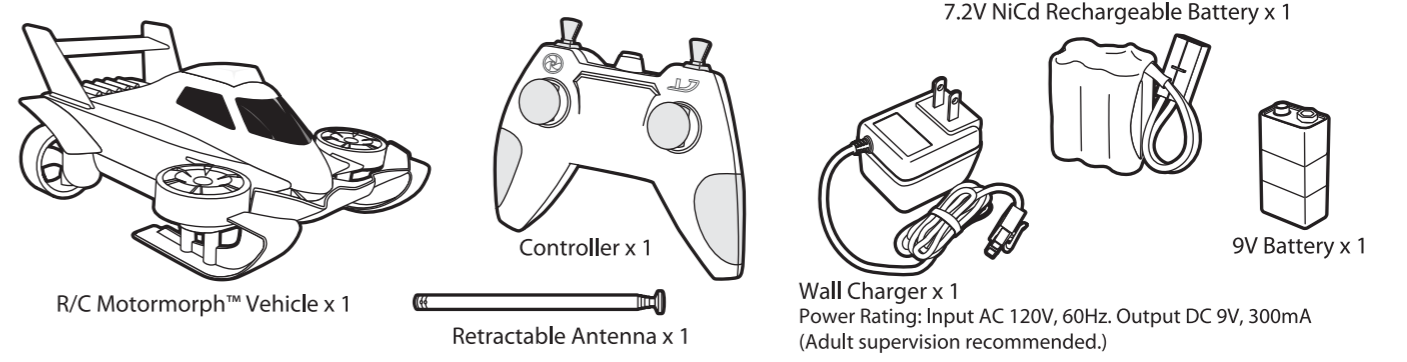
This device complies with part 15 of the FCC rules. Operation is subject to the following two conditions: (1) this device may not cause harmful interference, and (2) this device must accept any interference received, including interference that may cause undesired operation.
Note : This equipment has been tested and found to comply with the limits for a Class B digital device, pursuant to Part 15 of the FCC Rules. These limits are designed to provide reasonable protection against harmful interference in a residential installation. This equipment generates, uses and can radiate radio frequency energy and, if not installed and used in accordance with the instructions, may cause harmful interference to radio communications. However, there is no guarantee that interference will not occur in a particular installation. If this equipment does cause harmful interference to radio or television reception, which can be determined by turning the equipment off and on, the user is encouraged to try to correct the interference by one or more of the following measures:
- Reorient or relocate the receiving antenna.
- Increase the separation between the equipment and receiver.
- Connect the equipment into an outlet on a circuit different from that to which the receiver is connected.
- Consult the dealer or an experienced radio/TV technician for help.

Warning: Changes or modifications to this unit not expressly approved by the party responsible for compliance could void the user's authority to operate the equipment.

DEKKO TOYS CE 1177
Hereby, Dekko Toys Company Ltd., declares that this R/C Motormorph™ is in compliance with the essential requirements and other relevant provision of Directive 1999/5/EC.
© 2007 Dekko Toys Company Ltd.
Dekko Toys™ is a registered trademark of Dekko Toys Co., Ltd. in Hong Kong and/or other countries.
MotorMorph™ is a trademark of Dekko Toys Co., Ltd.
All rights reserved.
Dekko Toys Company Ltd., 1204-05, Tower A, New Mandarin Plaza, 14 Science Museum Road, Tsimshatsui East, Kowloon, Hong Kong
Tel: (852) 3620 2290 Fax: (852) 3107 0313
Dekko Toys Europe bvba, Remise 3, 3930 Hamont, Belgium
Tel: (32) 11 80 62 10 Fax: (32) 11 40 18 20
www.dekkotoys.com

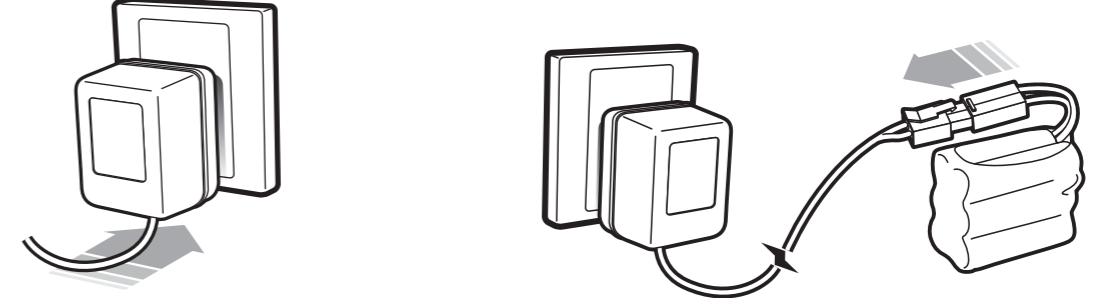
Contains NiCd battery pack. Battery pack must be recycled or disposed of properly.
If at any time in the future you should need to dispose of this product please note that Waste Electrical Products should NOT be disposed of with household waste. Please recycle where facilities exist. Check with your Local Authority or retailer for recycling advice. (Waste Electrical and Electronic Equipment Directive).
Product and colors may vary.
Carefully read the provided instruction manual as it contains important information. Conform to product safety standard ASTM F963-07 and EN71 regulatory requirements. Please retain this information for future reference.
Assortment #20003, Item#20003
MADE IN CHINA
P/N #20003-HS/EN-01-R0

CHECK TO MAKE SURE CONTENTS ARE COMPLETE:



CHARGING THE 7.2V NiCd RECHARGEABLE BATTERY:

- 1 Plug the Wall Charger into a wall outlet.
- 2 Connect the 7.2V NiCd Rechargeable Battery to the Wall Charger.



NOTE:

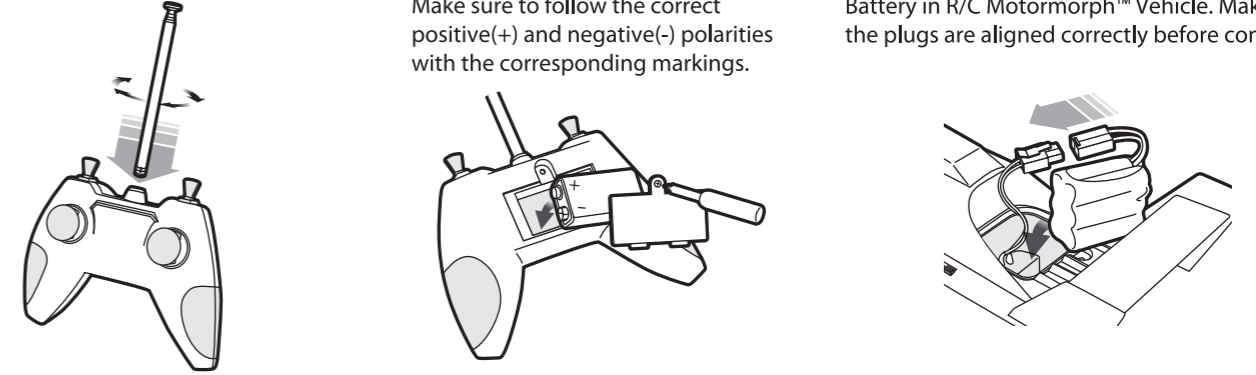
- (1) Charge the 7.2V NiCd Rechargeable Battery for 5 hours on the first charge, and 3-4 hours on other charges for optimum performance.
- (2) Operating time is 10-20 minutes after each full charge. Shorter charging time may result in shorter run periods.
- (3) The Wall Charger should be periodically examined for leaks, loose wiring and other conditions that may result in the risk of fire, electric shock or other personal injury. If you suspect a problem, do not use the Wall Charger and disposed of it properly.

CAUTION:

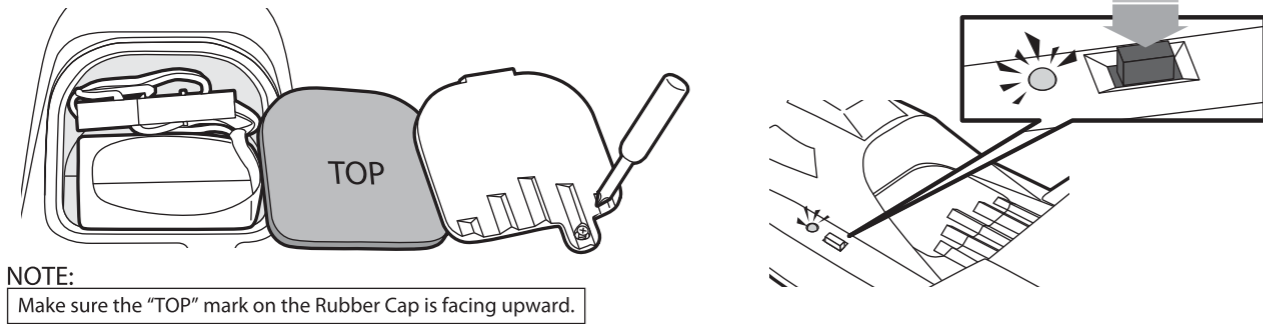
- Do not charge the 7.2V NiCd Rechargeable Battery for over 12 hours as this will result in damage to the battery.
- Charge the 7.2V NiCd Rechargeable Battery only with the provided Wall Charger. Never attempt to charge with any other chargers.
- Do not charge near fire, or where temperature is extremely high, or where it is wet or damp.
- Always full charge the 7.2V NiCd Rechargeable Battery before prolonged storage. Examination and recharging should be carried out periodically.
- If the 7.2V NiCd Rechargeable Battery shows severe damages or leaks under improper use and handling, stop using immediately and disposed of it properly.
- The provided Wall Charger is not a toy. Adult supervision recommended.

GETTING STARTED: Make sure the R/C Motormorph™ vehicle is correctly installed as described in the instruction sheet before using the product in water

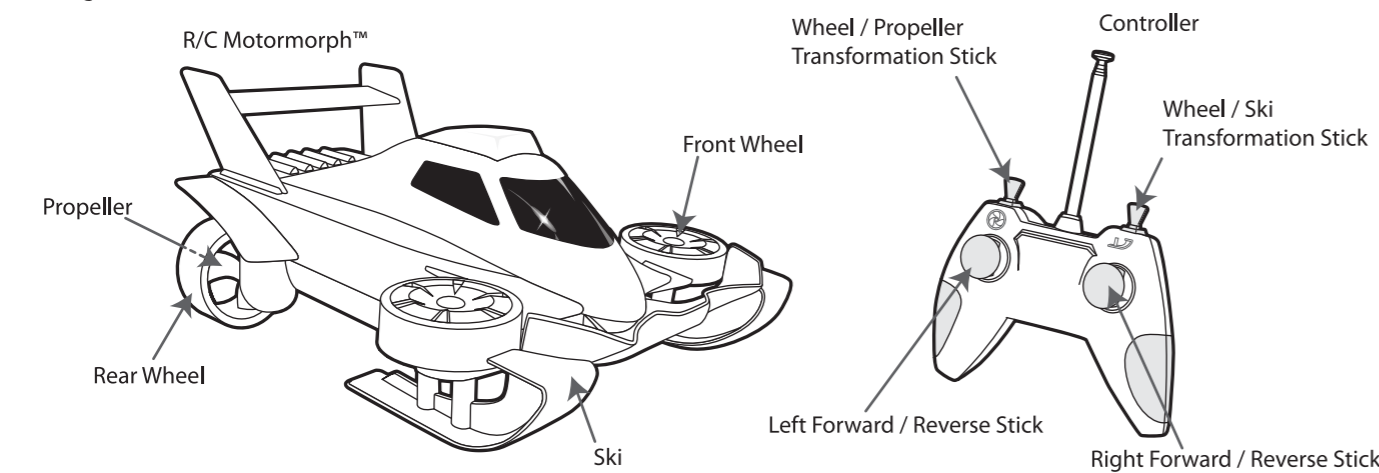
- 1 Assemble Antenna to Controller.
- 2 Install the 9V battery in Controller. Make sure to follow the correct positive(+) and negative(-) polarities with the corresponding markings.
- 3 Install the fully charged 7.2V NiCd Rechargeable Battery in R/C Motormorph™ Vehicle. Make sure the plugs are aligned correctly before connection.



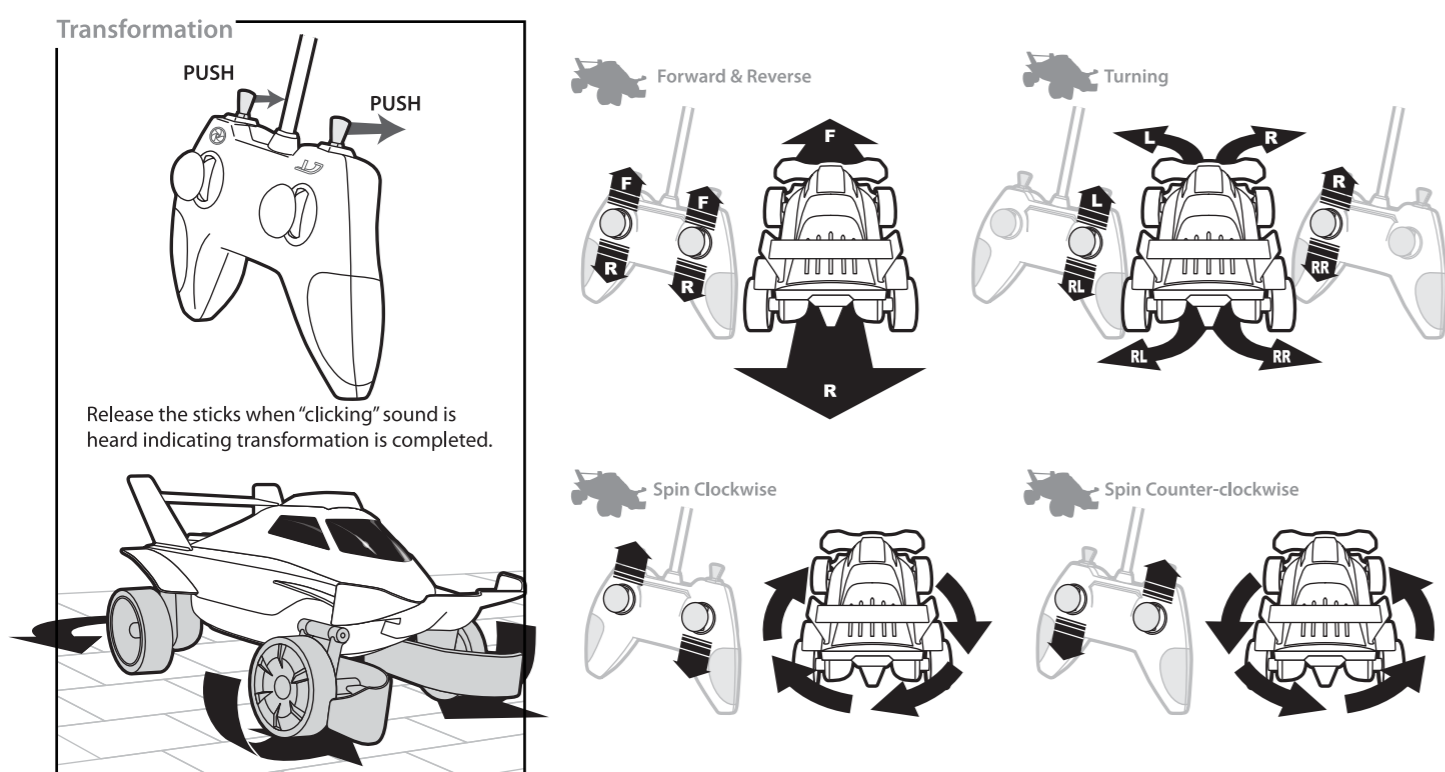
- 4 The wires and plugs should be placed neatly into the battery compartment as shown. Cover the battery compartment by the Rubber Cap then reinstall the battery door and tighten the screws.
- 5 Press the ON/OFF switch to ON. The power indicator will light on. Now it's ready to go!!



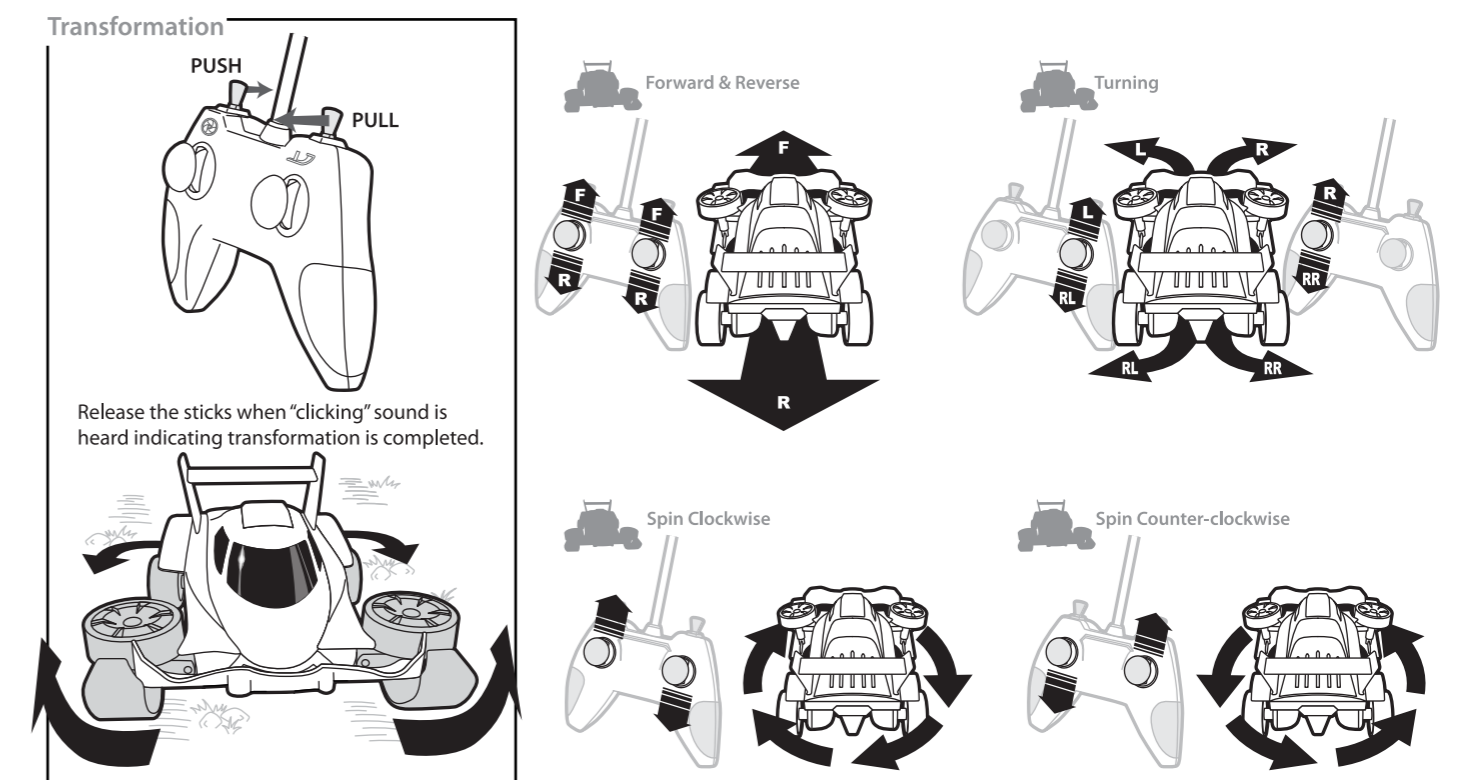
DRIVING YOUR R/C MOTORMORPH™ VEHICLE:



STREET MODE

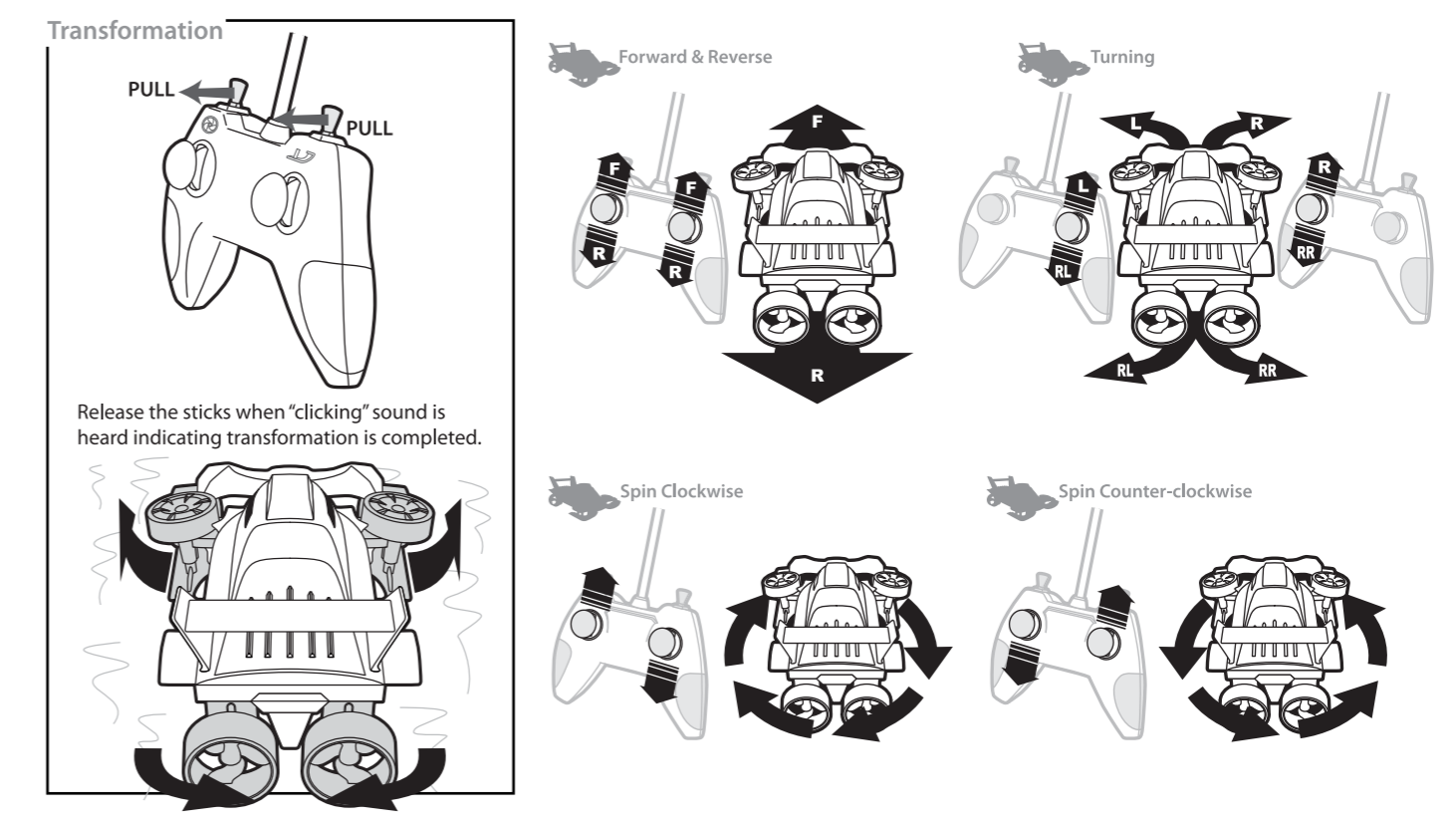


OFF-ROAD MODE



NOTE: Running speed and adaptability on off-road will vary with the surface condition.

WATER MODE



NOTE: Hold the R/C Motormorph™ Vehicle by its rear spoiler to drain water inside out thoroughly when finish playing. Dry the vehicle with a clean cloth. Never allow the Controller to get wet.