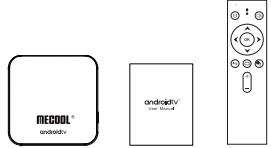


androidtv™ User Manual

Android TV is trademark of Google LLC.

Accessories



Android TV Box User Manual Voice Remote



HDTV Cable Power Adapter

01

Note: Android TV Box base on Google Android TV OS, please register a google account!

1/ Functions:

[Google Android TV Box]

Android TV Box with official Google Android TV OS, not Android Version OS.

[Say it to search it]

Android TV has listen and research functions. All you have to do is ask. Speak to the voice remote control and TV Box searches for what you want. Ask for the best action movies, today's weather, or the latest celebrity news!

[Get apps from Google Play Store]

You can get larger apps from Google Play Store via Android TV Box. By signing in Google, you'll get personalized recommendations on the home screen, and YouTube, Google Play, etc.

[Wide selection for your life]

Android TV Box with a high performance, CPU and GPU manage to keep you entertained. By signing in Google, there are Massive Movies&TV, Music, Game, Google TV OS offering wide selections for your family.

[Everything Pops With HDR]

HDR is making its way to TV and the Android TV Box. Enjoy videos in high definition like never before with select HDR content, and watch scenes and characters come to life in vivid color and clarity. Requires HDR TV and HDR-enabled video content.

[Chromecast Built-in]

Stream your favorite entertainment from your phone, tablet or laptop right to your TV.

2/ Startup Steps:

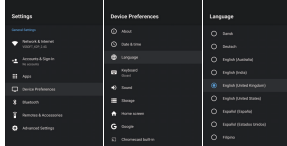
[Step 1]: Connect Android TV Box to TV set via a HD Cable;

[Step 2]: Connect Android TV Box to Power, Turn on Box;

02

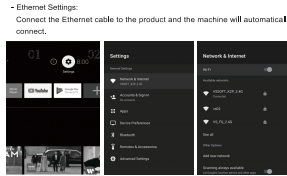
[Step 3]: Choose Menu & Voice Input language:

- Go to menu "Settings-Device Preference-Language", choose the language for menu and voice input.



[Step 4]: Connect Android TV Box to Wifi or Ethernet:

- Will Settings:
Open "Settings-Network", click on the WiFi source you want to connect to. After the connection is successful, you can access to the Internet.



03

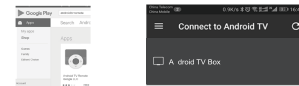
[Step 5]: Click on remote control, enter Google Account Menu:

- Sign in your Google Account by BT Remote Control.
(If don't have Google Account, please go to www.google.com and Register an account)



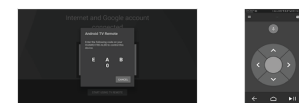
3/ How to use your Phone Control Android TV Box:

1. Search "Android TV Remote" this app from Google-Play Store of your android phone or tablet PC, then install into your device.
2. Find and click device "Android TV Box".



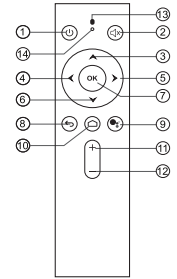
3. Pair phone or tablet PC with Android TV Box;

4. Phone or Tablet PC will be able to remote "Android TV Box" after pairing successfully.



04

BT Voice TV Remote Guide:



- ① Power on/Power off
- ② Mute
- ③ Navigate to Up
- ④ Navigate to Left
- ⑤ Navigate to Right
- ⑥ Navigate to Down
- ⑦ Press to Confirm
- ⑧ Return
- ⑨ Voice Control
- ⑩ Shortcut key to Home Page
- ⑪ Volume Up
- ⑫ Volume Down
- ⑬ Microphone
- ⑭ Indicator light

05

5/ Voice Input Function:

- Say it to search it

Finally, a TV that listens. All you have to do is asking. Speak to the voice remote control and Android TV Box searches for what you want. Ask for the best action movies, today's weather, or the latest celebrity news!



Note:

1. Android TV Box install Google Android TV Version Operating System, not Android Version Operating System.

2. We suggest that users should get APPS from Google Play Store (TV Version) directly. Third party APPS may not be installed which is not a TV version, or can not work after installation.

6/ Connection:

AV Connection

- Connect the AV cable of the 3 color (red/white/yellow) to the TV BOX'S AV Output interface, the other side to TV set AV Input interface. Connection cable made by color.

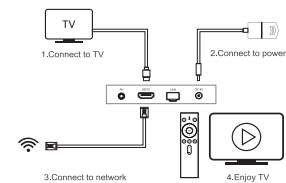
- Power on the TV BOX, Set TV video mode to AV input.

HDTV Connection

- Connect HDTV cable into the product interface, the other side into TV set, Power on the TV BOX, set TV video mode to corresponding HDTV input.

06

7/ Connection Diagram:



8/ Operating Instruction:

- **Startup:** After turn on the power supply, the blue light is lit up, about 30 seconds to enter the main interface.

- **Screen settings:** Open "Settings-Advanced Settings-Display-Screen position" you can adjust the screen zoom so that the screen shows the best status.

- **Resolution settings:** Open "Settings-Advanced Settings-Display-Screen resolution", the machine defaults to automatic, you can manually adjust to the best display status.

- **Date/Time settings:** Open "Settings-Device preference-Date/Time", set your GMT time and time display format. Note: This time the product needs to be connected to the network to display the time correctly. If the time is displayed incorrectly, please confirm whether the network is connected or not.

- **Uninstall APPS:** Open "Settings-APPS", select the APK you want to uninstall, press OK, click Uninstall.

- **Factory data reset:** Open "Settings-Device preference-Reset", be carefully to do this, after Factory data reset, all the data will be cleared.

07

9/ Firmware Update Instruction:

[OTA Update]

- Run the "UPDATE" app.

- Select OTA Update, Device will update to the latest version of firmware if it's available in the OTA server.



[Local Update]

- Insert TF card or USB disk with update firmware to device (Make sure the updated files on the TF card / USB disk flash drive's root directory).

- Select Local Update, click "Wipe Data" and "Wipe Media", then Confirm. The system will automatically run to updating program and restart after update finished.

[Computer Update]

- If TV Box dead or cannot enter Menu, have to try to take file back via PC upgrade. Welcome contact us to get more information.

Note:

During updating process, DO NOT power off the device. In addition, android is an open platform, research and development may differ in different manufacturers. DO NOT update other device that is not from us by this updating way to avoid system damage.

08

10/ Troubleshooting Warning:

Under no circumstances should you try to repair the TV BOX by yourself, as this will invalidate the warranty. Do not open it as there is a risk of electric shock. If any fault occurs, please firstly check with below listed points before taking to device to repair. If you are unable to remedy a problem by following list, contact your dealer for help.

Problem	Solution
No power	- Check if the power adapter is properly connected to the power and the TV BOX. - Check if the power on the remote control is to be on the power.
No picture	- Reconnect with HDTV cable or AV cable. - Check if the TV is installed properly.
No sound or distorted sound	- Adjust the volume. - Check that the speakers are connected correctly.
No audio or digital output	- Check the signal connections. - Check your cables and its port connections.
The TV Box does not respond to the Remote Control	- Make the remote control direct at the sensor on the front of the TV BOX. - Adjust the distance to the TV BOX. - Check the batteries in the remote control. - Check if the remote control is not paired with the user manual. - Check if the system has not been reset with power adapter to restart.
No sound during movies playback	- The audio codec may not be supported by the TV BOX, you can change to the supported audio on playing menu. - Check the volume.
The contents of the USB flash drive cannot be read	- The USB flash drive format is not compatible with the box, all data on the USB will be lost. Reformat of the TV BOX for 30 seconds and reinsert the TV BOX. - Check if the USB flash drive is not damaged and is not larger than 32GB.
The remote control of the USB flash drive	- Check the connection between the TV and the remote control. - Check the TV system setup. - Check the battery.
The TV screen is blank and the AV/LED is blinking	- Turn off your TV BOX, wait 30 seconds, turn it on again. - If you don't solve, check HDTV connection, confirm of change another HDTV cable, set the output resolution of the TV BOX into 720p.

09

Product Specification

Product Model: KM9

CPU: Amlogic S905X2 Quad core ARM Cortex-A53

OS: Android 9.0

ROM: 32GB

RAM: 4GB

Power: 5V 2A

Operating Environment:

Working Temperature: 0°C~+45°C

Storage Temperature: -20°C~+45°C

Humidity: <90%

Humidity: <95%

Tips:

• Keep a minimum of 10cm clearance around the device, do not cover newspapers or other items.

• The equipment must not be exposed to water droplets or water splashes. Objects such as vases filled with liquids must not be placed on the machine.

• Keep the product away from moisture, exposure, high temperatures, etc., away from magnetic objects.

• Avoid scratching the case and the interface, and prevent damage due to falling, throwing or strong impact.

• Use a dedicated power adapter to prevent damage to important components on the motherboard due to excessive current.

• Please do not attempt to disassemble this product yourself. The repair work is only for authorized personnel of the company.

• The battery must not be exposed to such conditions as sunlight, fire, or similar overheating environment.

10

FCC Warning:

This equipment has been tested and found to comply with the limits for a Class B digital device, pursuant to part 15 of the FCC Rules. These limits are designed to provide reasonable protection against harmful interference in a residential installation. This equipment generates, uses and can radiate radio frequency energy and, if not installed and used in accordance with the instructions, may cause harmful interference to radio communications. However, there is no guarantee that interference will not occur in a particular installation. If this equipment does cause harmful interference to radio or television reception, which can be determined by turning the equipment off and on, the user is encouraged to try to correct the interference by one or more of the following measures:

• Reorient or relocate the receiving antenna.

• Increase the separation between the equipment and receiver.

• Connect the equipment into an outlet on a circuit different from that to which the receiver is connected.

• Consult the dealer or an experienced radio/TV technician for help.

Caution: Any changes or modifications to this device not explicitly approved by manufacturer could void your authority to operate this equipment.

This device complies with part 15 of the FCC Rules. Operation is subject to the following two conditions:

(1) This device may not cause harmful interference, and (2) this device must accept any interference received, including interference that may cause undesired operation.

This equipment complies with FCC radiation exposure limits set forth for an uncontrolled environment. This equipment should be installed and operated with minimum distance 20cm between the radiator & your body.

Android TV is a trademark of Google LLC.

11