

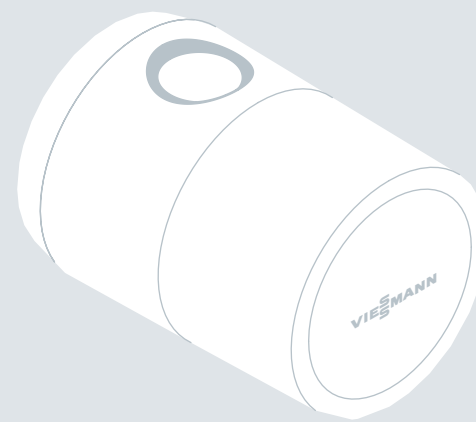
DE Montageanleitung ViCare Heizkörper-Thermostat	LT Montažo instrukcija ViCare radiatoriaus termostatas
GB Installation Instructions ViCare Radiator Thermostat Valve	LV Montāžas instrukcija ViCare sildīkļa termostats
FR Notice de montage Thermostat de radiateur ViCare	NL Montagevoorschriften ViCare radiatorthermostaat
BG Упътване за монтаж ViCare термостат за радиатори	PL Instrukcja montażu Termostatu grzejnikowego ViCare
CN 安装指南 ViCare散热器温控阀	PT Instruções de montagem Termostato dos radiadores ViCare
CZ Návod k montáži Termostat topného tělesa ViCare	RO Instrucțiuni de montaj pentru Termostatul ViCare pentru radiatoare
DK Montagevejledning Termostat ViCare	RS Uputstvo za montažu ViCare termostata radijatora
EE Paigaldusjuhend ViCare küttekeha termostaadi	RU Адаптер фланца терморегулирующего вентиля радиаторов ViCare
ES Instrucciones de montaje ViCare termostato del radiador	SE Montageinstruktion ViCare radiatortermostat
FI Asennusohje ViCare-lämpöpatteritermostaatti	SI Navodilo za montažo ViCare radiatorski termostat
HR Uputa za montažu ViCare termostata za radijatore	SK Montážny návod Termostat vykurovacieho telesa ViCare
HU Szerelési utasítás ViCare fűtőtest-termosztát	TR Montaj Kılavuzu ViCare Isitici Termostat
IT Istruzioni di montaggio Termostato per radiatori ViCare	UA Інструкція з монтажу термостата радіаторів ViCare



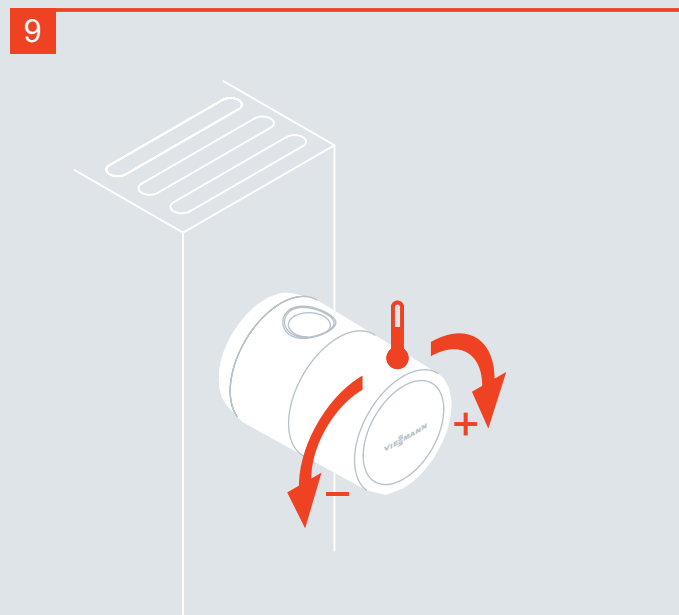
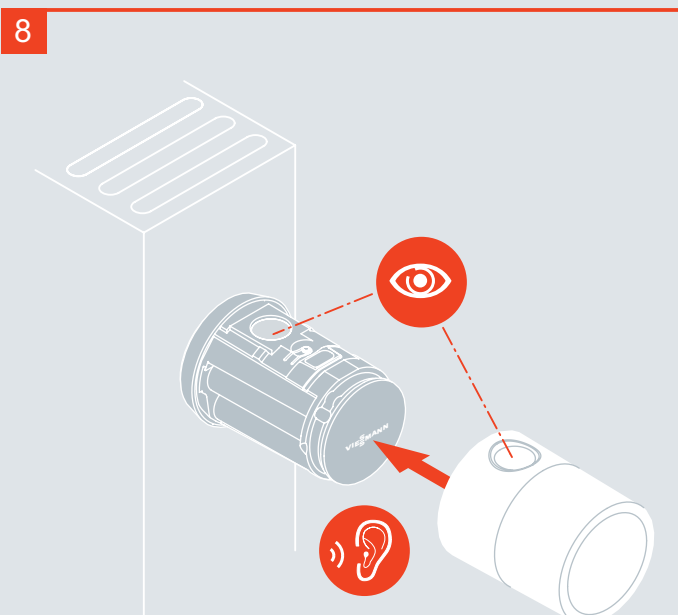
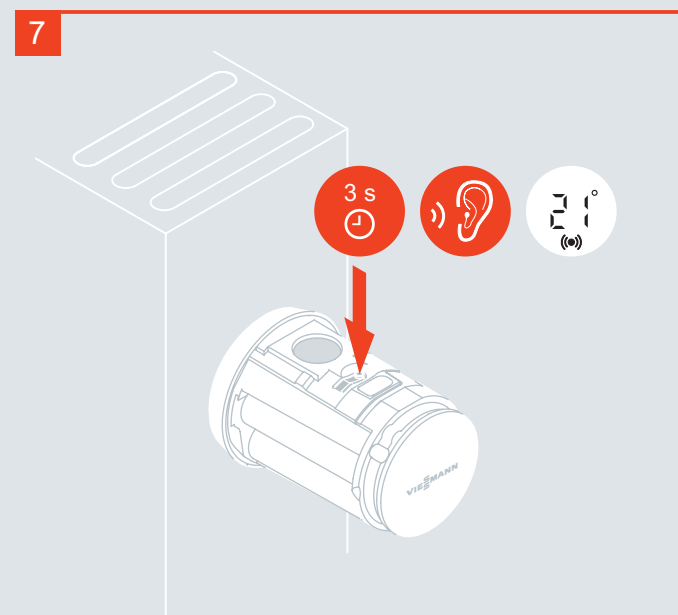
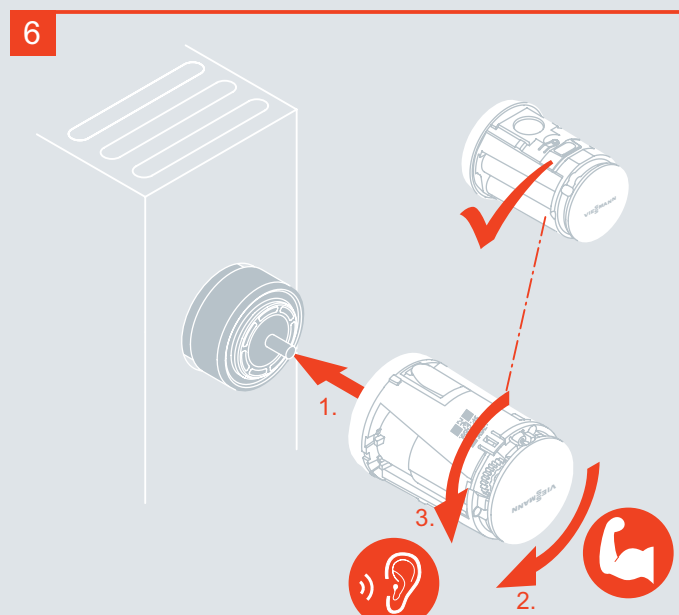
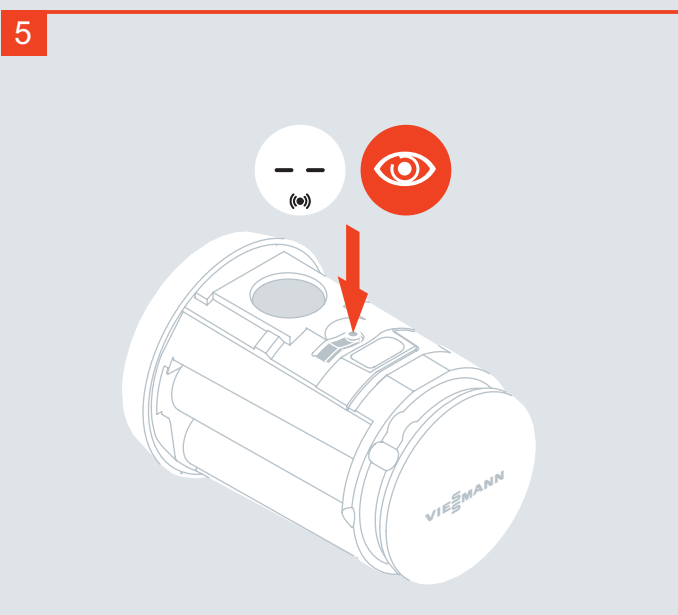
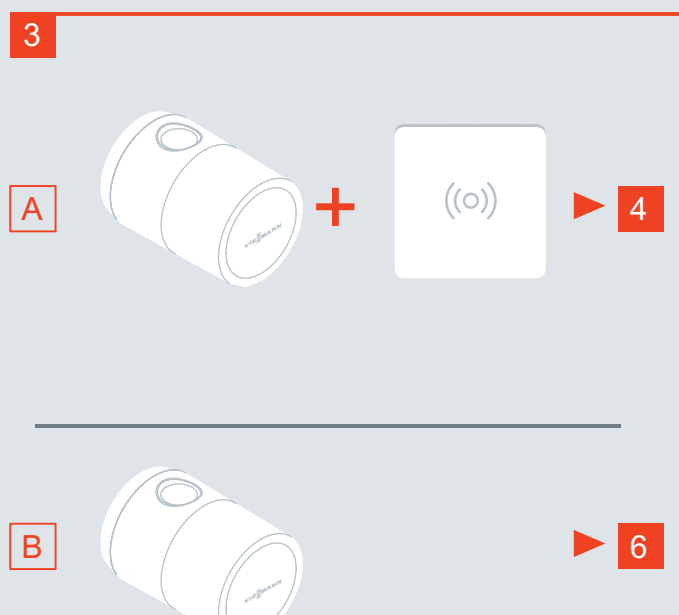
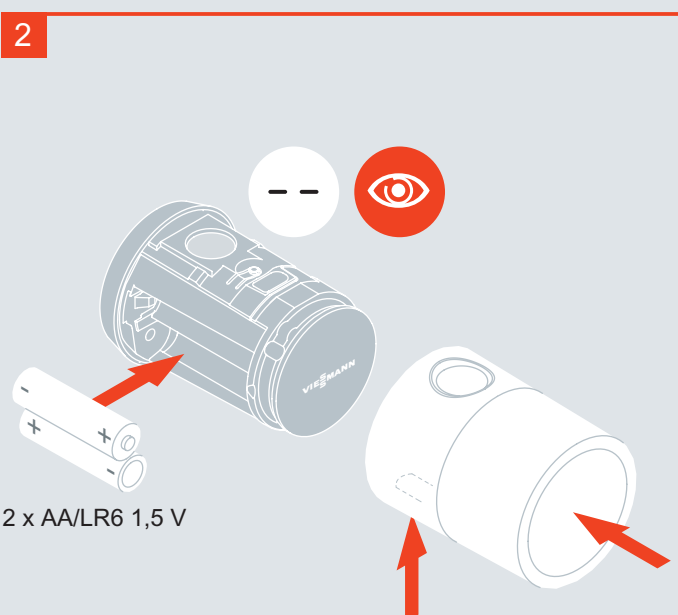
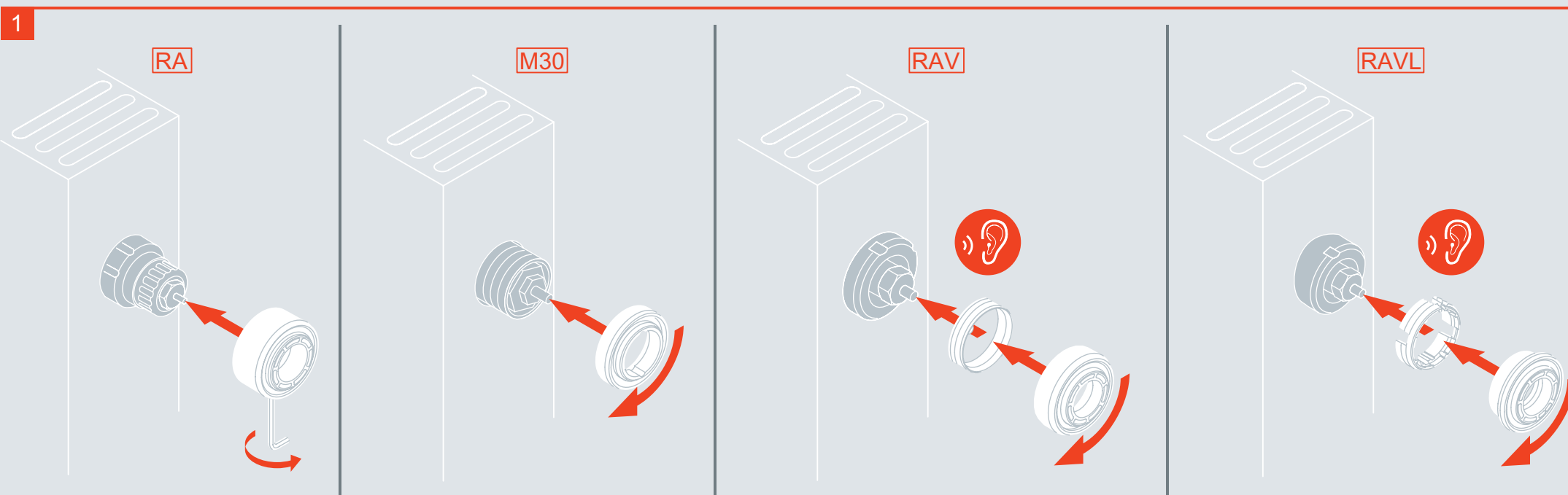
www.vicare.info

Viessmann Werke GmbH & Co. KG
D-35107 Allendorf
Telefon: 06452 70-0
Telefax: 06452 70-2780
www.viessmann.de

VISSMANN



5800251 9/2018



DE, AT, CH, LU: Sicherheitshinweise

Bitte befolgen Sie diese Sicherheitshinweise genau, um Gefahren und Schäden für Menschen und Sachwerte auszuschließen.

Zielgruppe

Diese Sicherheitshinweise richten sich an den Bediener der Heizungsanlage. Dieses Gerät kann auch von Kindern ab 8 Jahren und darüber sowie von Personen mit verringerten physischen, sensorischen oder mentalen Fähigkeiten oder Mangel an Erfahrung und Wissen benutzt werden, falls sie beaufsichtigt oder bezüglich des sicheren Gebrauchs des Geräts unterwiesen wurden und die daraus resultierenden Gefahren verstehen.

Bedingungen für den sicheren Betrieb

- Beachten Sie die Bedienungsanleitungen Ihrer Heizungsanlage.
- Das Gerät nur in Innenräumen montieren.
- Das Gerät darf nicht mit Wasser in Berührung kommen.

Gefahr

- Beschädigte Geräte gefährden Ihre Sicherheit.
 - Nehmen Sie ein beschädigtes Gerät nicht in Betrieb.
 - Instandsetzungsarbeiten am Gerät sind unzulässig.
 - Wenden Sie sich an Ihren Fachbetrieb.

Gefahr

- Medizinische Hilfsmittel, z. B. Herzschrittmacher können gestört werden durch Funksignale. Bitte informieren Sie sich beim Hersteller des medizinischen Hilfsmittels.

Entsorgung

Gerät im Elektromüll (nicht im Hausmüll) entsorgen.

GB, US, CA: Safety instructions

Please follow these safety instructions closely to prevent hazards, injury and material losses.

Target group

These safety instructions are intended for heating system users. This appliance can also be operated by children aged 8 and older, as well as by individuals with reduced physical, sensory or mental faculties or those lacking in experience and knowledge, provided such individuals are supervised or have been instructed in the safe use of this appliance and any risks arising from it.

Conditions for safe operation

- Observe the operating instructions for your heating system.
- The appliance must only be installed indoors.
- The appliance must not come into contact with water.

Danger

- Damaged equipment poses a safety hazard.
 - Never start up a damaged appliance.
 - Repair work on the appliance is not permitted.
 - Consult your contractor.

Danger

- Wireless signals can interfere with medical devices, e.g. pacemakers. Please consult the manufacturer of the medical device.

Disposal

Dispose of the appliance as electrical waste (non-domestic waste).

US/CA: Information to the User

NOTICE: This device complies with Part 15 of the FCC Rules and with Industry Canada licence-exempt RSS standard(s).

Operation is subject to the following two conditions:

- this device may not cause harmful interference, and
- this device must accept any interference received, including interference that may cause undesired operation.

Le présent appareil est conforme aux CNR d'Industrie Canada applicables aux appareils radio exempts de licence. L'exploitation est autorisée aux deux conditions suivantes:

- l'appareil ne doit pas produire de brouillage, et
- l'utilisateur de l'appareil doit accepter tout brouillage radioélectrique subi, même si le brouillage est susceptible d'en compromettre le fonctionnement.

NOTICE: Changes or modifications made to this equipment not expressly approved by Viessmann may void the FCC authorization to operate this equipment.

NOTE: This equipment has been tested and found to comply with the limits for a Class B digital device, pursuant to Part 15 of the FCC Rules. These limits are designed to provide reasonable protection against harmful interference in a residential installation. This equipment generates, uses and can radiate radio frequency energy and, if not installed and used in accordance with the instructions, may cause harmful interference to radio communications. However, there is no guarantee that interference will not occur in a particular installation. If this equipment does cause harmful interference to radio or television reception, which can be determined by turning the equipment off and on, the user is encouraged to try to correct the interference by one or more of the following measures:

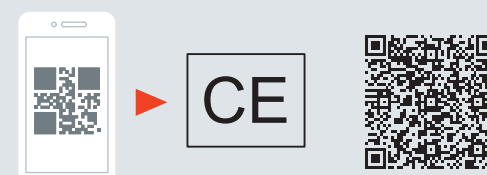
- Reorient or relocate the receiving antenna.
- Increase the separation between the equipment and receiver.
- Connect the equipment into an outlet on a circuit different from that to which the receiver is connected.
- Consult the dealer or an experienced radio/TV technician for help.

Radiofrequency radiation exposure Information:

This equipment complies with FCC radiation exposure limits set forth for an uncontrolled environment. This equipment should be installed and operated with minimum distance of 20 cm between the radiator and your body. This transmitter must not be co-located or operating in conjunction with any other antenna or transmitter.

Radio Transmitter Information:

This device includes a radio transmitter operating in the 2405-2480 MHz band to connect to the central unit.



FCC ID: 2AIZ9-TR0618
IC: 21680-TR0618

f: 2405,0 - 2480,0 MHz
P_{max}: 0,1 W (e.i.r.p.)



