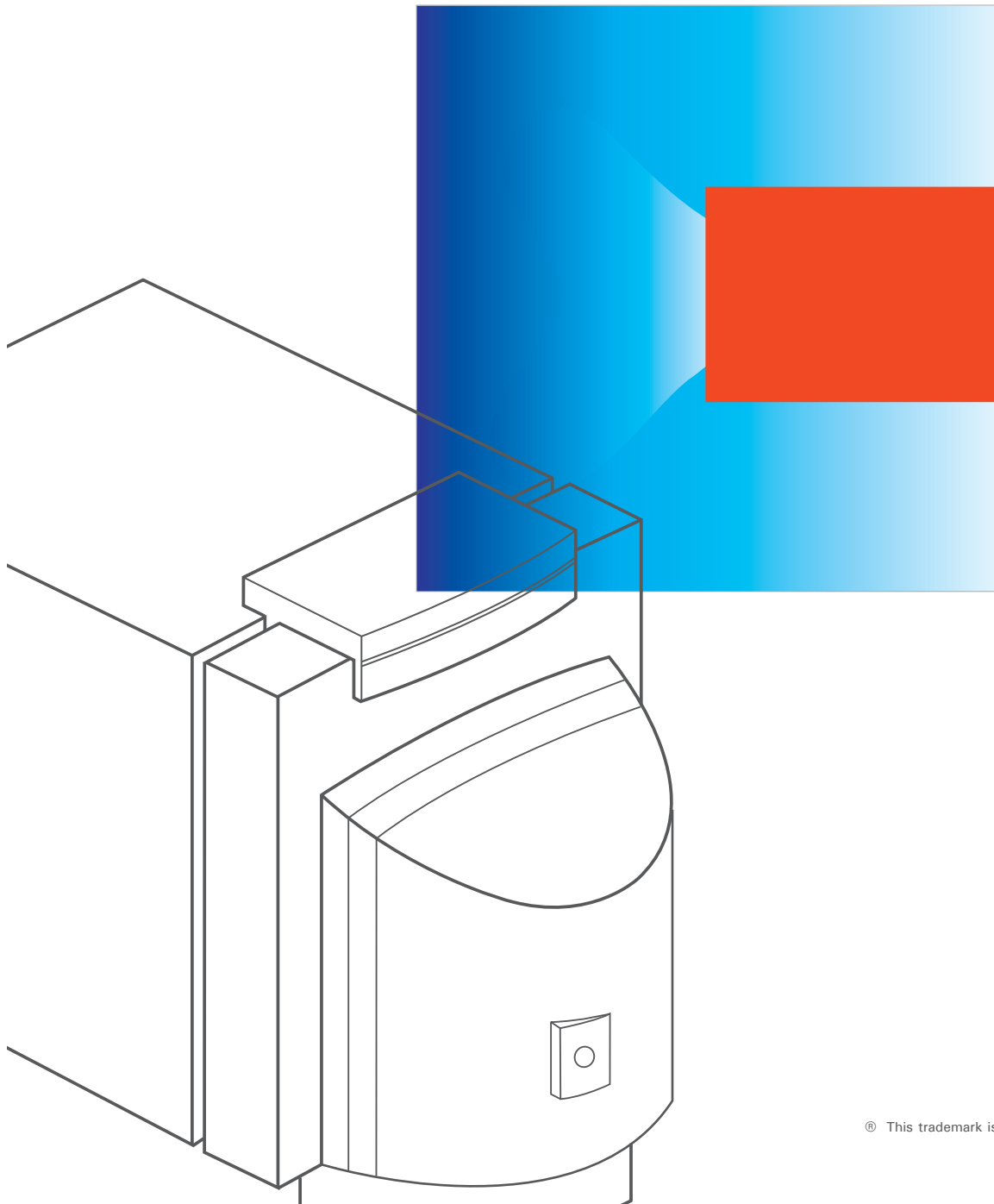


# VITOLA 200®

Oil-/Gas-fired hot water heating boiler with cast iron/steel biferral heating surfaces for modulating boiler water temperatures without low limit  
Rated input: 83 to 300 MBH/24 to 88 kW

**VIESSMANN®**





# Introducing a new generation of oil-/gas-fired hot water heating boilers **VITOLA 200**



200

Oil and gas are precious and indispensable natural resources. This puts modern oil and gas heating technology before tough challenges with respect to economizing and environmental friendliness. Expectations of customers have also increased with respect to user-friendliness and quality, calling for an innovative product line. The Vitola 200 oil-/gas-fired boilers from Viessmann offer modern and future-oriented solutions in every way.

## **The platform strategy**

The Vitola 200 oil-/gas-fired boilers are part of the new Vitotec Program by Viessmann, delivering a systematic modular technology strategy. This means: all system modules are built upon a uniform base chassis. In this way common components and uniform, easy-to-follow installation steps were developed. Installation, operation, maintenance and service are drastically simplified and reduced. With our new Fastfix installation system, our heating boilers are installed quickly – saving time and money.

## **High quality and economical operation**

High quality and top performance – this is what the Vitola 200 offers. With its biferral heat exchanger surface, the Vitola 200 sets a new standard, which has written heating history. The heat exchanger surface has a decisive advantage compared to conventional heating surfaces.

## **Switches off when no heat is required**

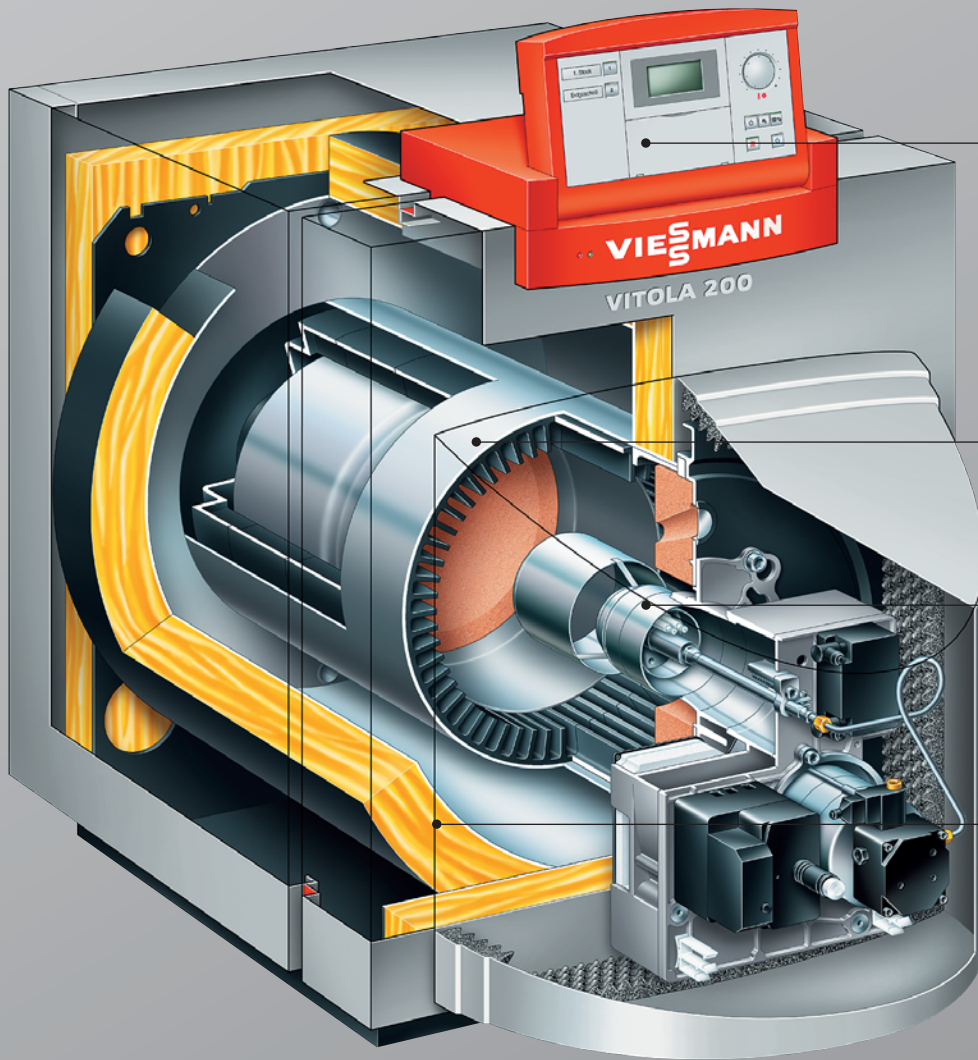
Most heating boilers have to be operated throughout the year at a constant base temperature – during the transitional months and even in the summer, when the heating boiler is only used for domestic hot water heating. This is not the case with the Vitola 200. Thanks to the biferral heat exchanger surface, specifically designed for modulating boiler water temperatures without low limit, the boiler water temperature can be adjusted automatically to outside temperatures. If no heat is needed, the boiler even turns itself off, reducing fuel consumption.

## **This makes for a cleaner environment**

The Vitola 200 offers reduced energy consumption and reduced emissions. The low-emission Viessmann burner contributes significantly to the conservation of the environment. Due to the optimized combustion chamber geometry, nitrogen oxide emissions are significantly reduced.

## **Operation at the push of a button**

Your heating comfort continues effortlessly with our new generation of smart controls. With the push of a button you can adjust any function in a fast and secure fashion. The illuminated display of the Vitotronic control provides a clear understanding of the heating system operation. Furthermore, the operating settings can be adjusted individually and are user-friendly.



Vitotronic 200  
digital control unit

Biferral sandwiched  
heat exchanger surface

Vitoflame 200 oil burner

Highly effective  
insulation

Burner may not be exactly as illustrated.

<b>VITOLA 200</b>		<b>Model</b>	VB2-	18	22	33	40	50	63
<b>Rated input oil</b>	MBH		83	107	135	170	219	300	
	kW		24	31	39	50	64	88	
<b>Rated output oil</b>	MBH		72	92	116	146	189	258	
	kW		21	27	34	43	55	76	
<b>Rated input gas</b>	MBH		90	116	146	185	238	300	
	kW		26	34	42	54	69	88	
<b>Rated output gas</b>	MBH		75	97	122	154	198	249	
	kW		22	28	35	45	57	73	
<b>Total dimensions*</b>	Length	inches	43 3/4	46 1/4	52 1/4	53 1/4	58 1/2	63	
		mm	1112	1178	1340	1350	1489	1603	
	Width	inches	25 1/4	26 1/4	27 1/2	30 1/2	30 1/2	30 1/2	
		mm	639	667	701	776	776	776	
	Height	inches	32 3/4	33 1/2	34	37	38 1/2	38 1/2	
		mm	830	850	865	940	975	975	
<b>Weight (incl. insulation, burner and boiler control)</b>	lbs		381	434	542	697	866	941	
	kg		173	197	246	316	393	427	
<b>Boiler water content</b>	USG		18.5	23.2	31.2	37.0	52.6	59.0	
	ltrs		70	88	118	140	199	223	

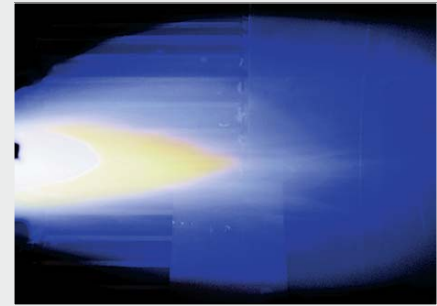
\*Total dimensions with Viessmann Vitoflame 200 burner installed.

Dimensions may vary depending on burner type. Please refer to Technical Data Manual of burner for applicable dimensions.



## The benefits at a glance:

- High-quality oil-/gas-fired low temperature heating boiler, input range 83 to 300 MBH/24 to 88 kW.
- Specifically designed for modulating boiler water temperatures without low limit. The biferral heat exchanger surface made of cast iron and steel provides high operational reliability and a long service life.
- Low-emission Viessmann burner and optimized combustion chamber geometry.
- Extremely economical and environmentally friendly through modulating boiler water temperature; the boiler switches off completely when no heat is required.
- Reliable heat transfer due to wide water jackets and large water content.
- Highly effective boiler insulation for negligible standby losses.
- A boiler base for easier service access and cleaner burner operation.
- Easy maintenance and service access due to the horizontal configuration of the combustion chamber.
- Two supply and return water connections for ease of piping.
- Easy installation and start-up: all Viessmann oil/gas burners are factory tested and adjusted to the rated input.
- If required, the flue gas temperature can be increased with minor adjustments to the combustion chamber.
- New Fastfix installation system – up to 50% installation time savings.
- A.F.U.E. rating:
  - Oil up to 87.4%
  - Liquid propane up to 86%
  - Natural gas up to 84.5%



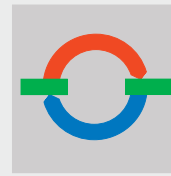
Vitoflame 200 low emission burner



Biferral heat exchanger surface



## VITOTRONIC controls



Vitotronic is a new generation of smart controls that think along – from installation to operation, from maintenance to service, Vitotronic controls 100, 200 and 300 offer the right solution for every need.

### Everything in sight – everything under control

The clear operating platform of all Vitotronic controls was designed in accordance with the latest ergonomic research. The Vitotronic 200/300 controls are easily adjustable to any desired operating position. A plain text supported LCD display makes adjustments child's play.

After adjustments are made, the control is simply pushed back into the housing, where it blends seamlessly into the Vitotronic design. An LED light display indicates the operating status.

### At the touch of a button: warm – or cold

Whether you are expecting guests or are ready to depart for an evening or a holiday trip, with the Vitotronic 200 or 300 controls you can adjust your heating system with the touch of a button – for example with the party or economy buttons, which temporarily change the operating mode. The holiday program will lower the heating system temperature to save energy while you are away for longer periods of time.

### Comfort comes first

For those who would like more convenience operating their heating system – the Vitotrol remote control can easily be added to the Vitotronic control system. Vitotrol allows remote operation from your living area.



Vitotronic 200 control

## VITOCCELL DHW tanks

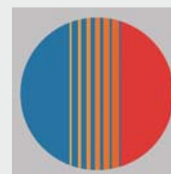
The most effective domestic hot water heating system is the combination of a hot water heating boiler and an indirect-fired domestic hot water storage tank. High and steady flow rates, low standby losses and high draw rates stand for comfort, economy and reliability. It also stands for the new Vitocell tank series, providing the right solution for every need – from 42 to 120 USG/160 to 450 liters, with single or dual heat exchanger coils, for tank placement below or beside (page 6) the heating boiler.

### Vitocell 100

The Vitocell 100 domestic hot water storage tanks with Ceraprotect two-coat enamel finish meet all demands for comfortable, economical domestic hot water heating and take a leading position in the market for enameled domestic hot water storage tanks combined with a hot water heating boiler. The Ceraprotect two-coat enamel finish, together with a consumable anode, protects the tank against corrosion.

### Vitocell 300

The Vitocell 300 domestic hot water storage tanks made of corrosion-resistant high-alloy stainless steel satisfy the most stringent hygienic requirements and expectations. Stainless steel is a material which is used for its outstanding hygienic properties in kitchens, laboratories, hospitals and in the food processing industry. Even after many years of use, the homogeneous surface of high-alloy stainless steel remains completely hygienic.

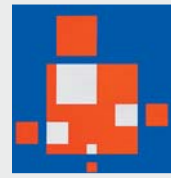




Burner may not be exactly as illustrated.



# Progressive heating technology is system technology



Every single component of our heating technology follows the Vitotec building block principle. This guarantees a smooth functioning of the entire heating system. All boilers, burners and controls harmonize perfectly.

## Controls

The Vitotronic controls 100, 200 and 300 (Fig. 1) meet the demands of every heating system application – from the basic to the sophisticated.

## Platform

All Vitola 200 boilers have a common base chassis. This simplifies the installation, operation, maintenance and service considerably.

## Burners

All Viessmann burners (Fig. 2) are factory tested at operating temperature and are adjusted to the rated boiler input.

## Domestic hot water tanks

The comprehensive Vitocell domestic hot water tank program (Fig. 3) offers economical hot water comfort for every need.

## Remote control

For Vitotronic 200/300 controls, adjustable Vitotrol remote controls (Fig. 4) are available. They allow easy control of the heating system from your living area.

## Accessories

The Divicon mixing valve station (Fig. 5) comes completely assembled and can be easily installed.

A safety header (Fig. 6) with pressure relief valve, pressure gage and air vent including molded insulation shells, completes the accessory package.



**VIESSMANN**

# Vitotec: Technology Function Design

The new Vitotec program is the successful synthesis of advanced, state-of-the-art technology and future-oriented innovations. The Vitotec program combines technological progress with functionality and design. All innovations are consistently targeted to providing benefits for the user – both the heating contractor and the system operator.

## Good design is less design

The Vitotec design is the result of a strictly functional approach in which all elements are reduced to the essential. The new “Vitosilver” color finish – in combination with the accent color “Vitorange”, symbolizing heat – unites Viessmann innovation with Viessmann tradition.

## One name – all products

First unity of form, now unity of name. All product names contain the component “Vito”, indicating not only their affiliation with the Vitotec program – but also system compatibility. The second part of the name signifies the product group. The different program levels are differentiated by numbers such as 100, 200 or 300.

## Platform strategy

The new unity of Vitotec lies in its constructional design and follows a well-established technical principle. With the Vitotec program, Viessmann has implemented a modular technology strategy based on one common platform, whereby different functional modules are positioned on one base chassis to build different models. This permits the use of many identical parts, uniform and easy-to-follow installation steps, and a reduced number of universal spare parts. Maintenance, servicing and operation are considerably simplified through a uniform design and standardization.

## Operation made easy

The new Vitotronic controls are also designed on the building block principle. Four modules, two base chassis with motherboards and safety controls, and two operating units (fixed or in drawer form) make up the complete control program.

## The heating contractor is a Viessmann expert

Vitotec is more than a product line. It contains a comprehensive training, service and maintenance package for the heating contractor. This ensures that the heating contractor will not only be familiar with the latest technology, but will also be trained extensively at our Viessmann Academy for the constantly changing demands of the heating industry. As a result, the heating contractor will be a Viessmann specialist.

The new Vitotec program offers you a diverse, yet uniform product range for every need – and once more confirms our philosophy: “Viessmann – more than heat”.





**Viessmann**

With more than 8,000 employees around the world, the Viessmann Group is one of the leading manufacturers of heating technology worldwide. Viessmann represents competence and innovation and offers you a wide variety of high-tech heating products, each a design-matched component in the progressive Viessmann system technology. Despite their diversity, Viessmann products have one thing in common: a high standard of quality throughout the entire product line that translates into operational reliability, energy savings, environmental friendliness and operational comfort.

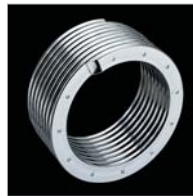
Viessmann innovations lead the industry not only in conventional heating technology, but also in the area of renewable energy sources such as solar and heat pump technology.

All of our products are developed in accordance with our philosophy to achieve the greatest value at all times – for our customers and our business partners.

Contact the Viessmann office in Canada or U.S.A. for the name of the Viessmann Sales Representative closest to you.



**Viessmann meets all your heating needs with a diverse, yet completely harmonized product range.**



**North American and Canadian Head Office**

Viessmann Manufacturing Company Inc.  
Waterloo, ON Canada  
Tel. (519) 885-6300  
Fax (519) 885-0887  
[www.viessmann.ca](http://www.viessmann.ca)

**U.S. Head Office**

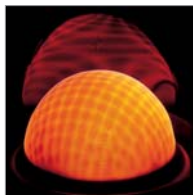
Viessmann Manufacturing Company (U.S.) Inc.  
Warwick, RI U.S.A.  
Tel. (401) 732-0667  
Fax (401) 732-0590  
[www.viessmann-us.com](http://www.viessmann-us.com)

**Viessmann Sales Center**

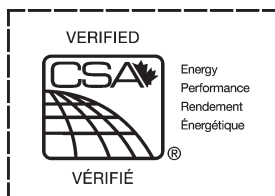
Langley, BC Canada (604) 533-9445

**Viessmann Sales Offices**

Waterloo, ON Canada (226) 338-7038  
Toronto, ON Canada (416) 657-4333  
Stoney Creek, ON Canada (905) 664-4426  
Reno, NV U.S.A. (775) 849-0725  
Chicago, IL U.S.A. (773) 248-4809



Oil-fired



climate of innovation