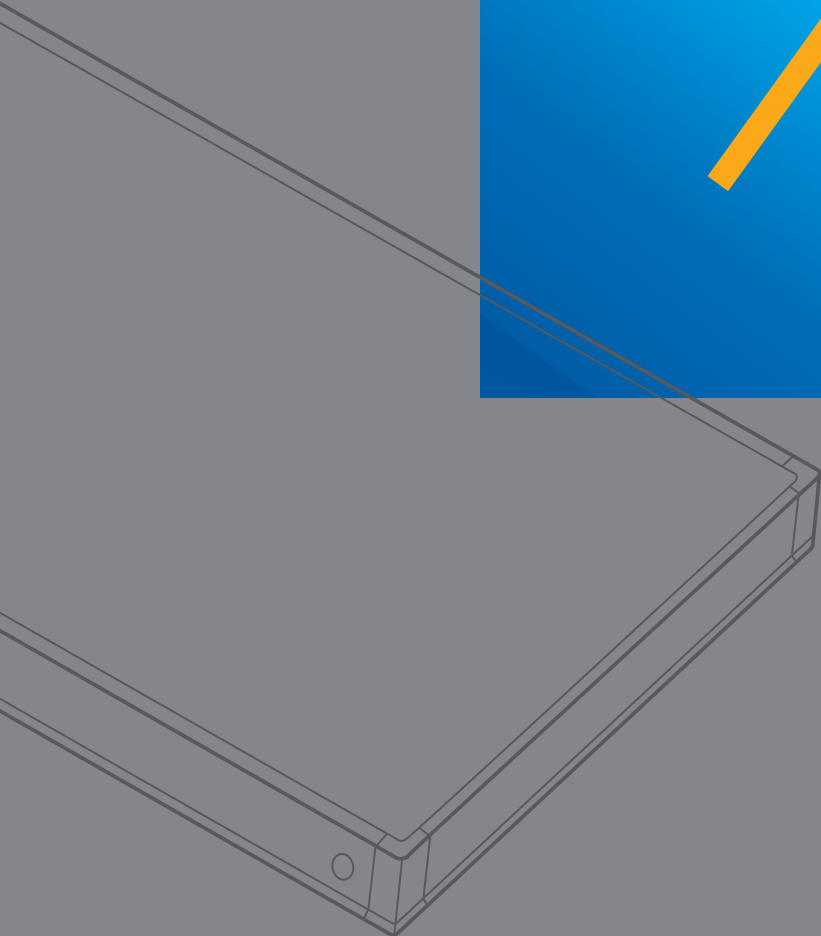


Flat plate solar collector
Absorber surface area: 25 ft² / 2.3 m²

VIESMANN

VITOSOL 100-F

*Economical, high-performance
flat plate solar collector*



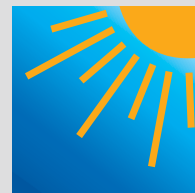
VITOSOL 100-F

The Vitosol 100-F is an economy series flat plate collector that offers high performance and quality construction at an affordable price. Ideal for any solar thermal application especially domestic hot water (DHW) or pool heating.



Viessmann Manufacturing Company Inc.
750 McMurray Road
Waterloo, ON N2V 2G5 • Canada
Tel.: (519) 885-6300 Fax: (519) 885-0887
www.viessmann.ca

Viessmann Manufacturing Company (U.S.) Inc.
45 Access Road
Warwick, RI 02886 • U.S.A.
Tel.: (401) 732-0667 Fax: (401) 732-0590
www.viessmann-us.com



The benefits at a glance:

■ **High-performance** flat plate collector at an attractive price, thanks to a highly-efficient selectively-coated copper absorber.

■ **Rugged, high-quality construction** using impact-resistant solar glass, copper, aluminum and non-degrading thermal insulation.

■ Universal application

- flat and sloped roofs or freestanding
- vertical or horizontal installation
- compatible with any DHW system
- Connect up to 12 collectors in series
- Commercial or residential systems

■ **Maximum system performance and reliability** with a full range of solar system components designed to integrate seamlessly.

■ **Fast installation** with flexible connection pipes and quick-connect fittings. Prefabricated collector mounting hardware ensures easy connection to roofs.

■ **Suitable** for many applications. Best suited for DHW or pool heating.

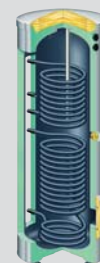
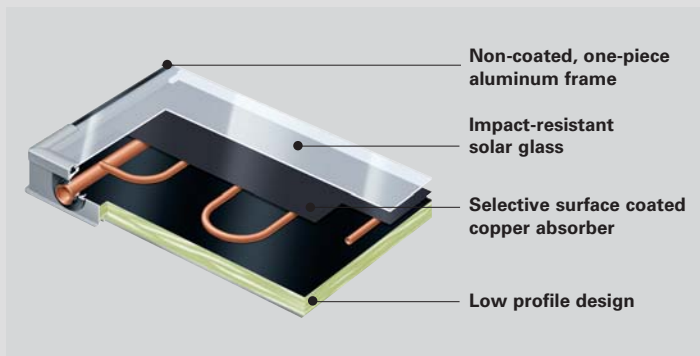
■ **OG-100 Certified** by the Solar Rating and Certification Corporation (SRCC).



Solar-Divicon pumping station

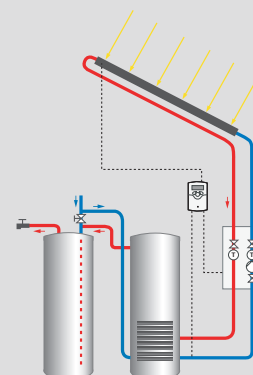


SCU124 Solar control unit



Vitocell-B 100 dual-coil DHW tank

VITOSOL 100-F	Model	SV1	SH1
Installation		Vertical	Horizontal
Total surface area	ft ² / m ²	27 / 2.5	27 / 2.5
Absorber surface area	ft ² / m ²	25 / 2.3	25 / 2.3
Total dimensions	Width in / mm	41 3/4 / 1056	93 3/4 / 2380
	Height in / mm	93 3/4 / 2380	41 3/4 / 1056
	Depth in / mm	2 3/4 / 72	2 3/4 / 72
Weight (incl. insulation)	lbs / kg	95 / 43	95 / 43



Solar DHW pre-heat system

Technical information subject to change without notice.