

FVD98-F025A  
FCC ID: ACJ93312137

FVD98-F026A  
FCC ID: G5517227

NOTE

- The X-rays generated in this unit are shielded sufficiently. High voltage : Max. 27.0 kV.
- For ergonomic reasons, it is recommended not to use blue characters on a dark background. Doing so may produce insufficient contrast that could lead to eye strain.

CE Conformity

**CE** This device complies with the requirements of the EEC directive 89 / 336 / EEC as amended by 92 / 31 / EEC and 93 / 68 / EEC Art.5 with regard to "Electromagnetic compatibility", and 73 / 23 / EEC as amended by 93 / 68 / EEC Art. 13 with regard to " Safety".

Required item	Relative to Standard Value	Relative to those Exceeding Standard Value	Remarks
EMI	#1		#4
ESD	#2	#3	X
RADIATED RF	#1	#3	
TRANSIENT F / B	#1	#3	
LINE HARMONICS	#1		

- #1 : Satisfies standards with no problems in performance and reliability.
- #2 : Effects may appear temporarily on the screen but there will be no problem in reliability.
- #3 : There is fear of the product breaking down.
- #4 : If a signal cable other than that specified is used, it may be the cause of electromagnetic wave interruption to peripheral devices.  
To assure continued CE compliance the user must use the provided 1.5 m shielded video signal cable with bonded ferrite cores at both ends of the cable.

Handle correctly in accordance with the instruction manual.

EMI : Electromagnetic Interference      ESD : Electrostatic Discharge  
RF : Radio Frequency                      F / B : Fast Burst

As an ENERGY STAR® Partner, Display Monitor Division, AVC Company, Matsushita Electric Industrial Co., Ltd. has determined that this product meets the ENERGY STAR® guidelines for energy efficiency.

**Federal Communications Commission Requirements**

This equipment has been tested and found to comply with the limits for Class B digital devices, pursuant to Part 15 of the FCC Rules. These limits are designed to provide reasonable protection against harmful interference in a residential installation. This equipment generates, uses, and can radiate radio frequency energy and, if not installed and used in accordance with the instructions, may cause harmful interference to radio communications. However, there is no guarantee that interference will not occur in a particular installation. If this equipment does cause harmful interference to radio or television reception, which can be determined by turning the equipment off and on, the user is encouraged to try to correct the interference by one or more of the following measures:

- Reorient or relocate the receiving antenna.
- Increase the separation between the equipment and receiver.
- Connect the equipment into an outlet on a circuit different from that to which the receiver is connected.
- Consult the dealer or an experienced radio/TV technician for help.
- Include ferrite core kit within shipping box; and provided instructions that if user is going to use BNC connectors, they must attach ferrite core to their separately purchased BNC cable.

**FCC Warning;**  
To assure continued compliance, the user must use grounded power supply cord; and the provided shielded video interface cable with bonded ferrite cores. If BNC cable is going to be used, the user must mount the provided ferrite core onto the BNC cable. Refer to page 22 for ferrite core kit mounting instructions. Also, any changes or modifications not expressly approved by the party responsible for compliance could void the user's authority to operate this device.

# Ferrite core kit

## Ferrite core kit installation

When the BNC connector type signal cable is used, connect the accessory ferrite core kit. The connection will not conform to the FCC-B type standard if the ferrite core kit is not installed. This may cause signal reception disturbance in televisions, radios and other equipments.

## Precautions

Ferrite core kit  
(supplied) 1piece

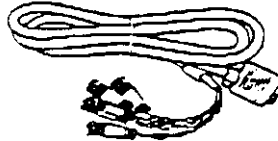


Tie-wrap  
(supplied) 1piece



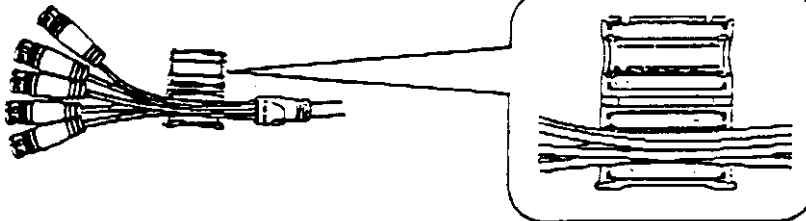
Signal cable With BNC connectors  
(commercially available) 1piece

\*The BNC connector type signal cable is not supplied. Either purchase a cable on the open market or use the signal cable used for the computer.

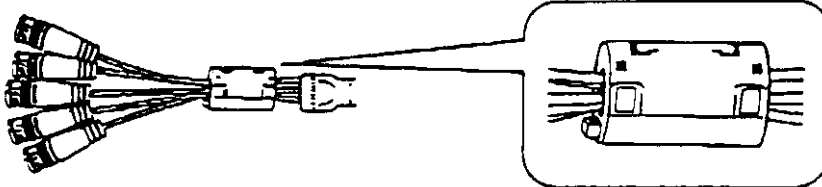


## Usage Method

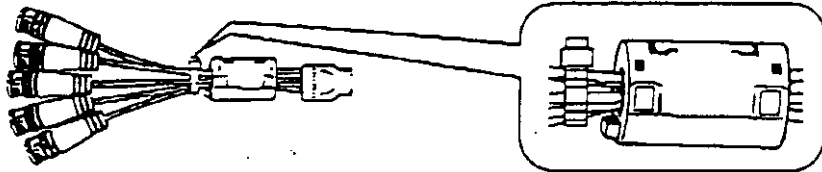
- 1 Attach the ferrite core to the BNC connector cable where it separates into five cables.



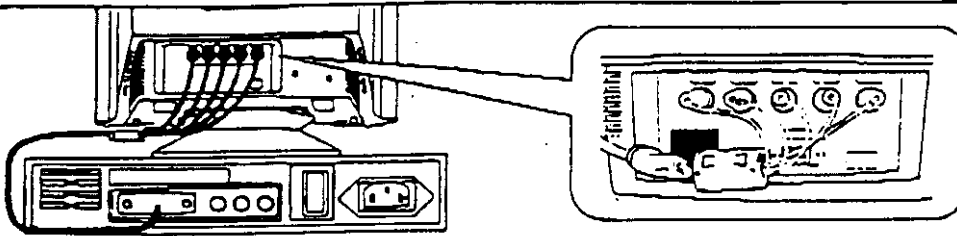
- 2 After mounting the ferrite core, pinch it until it locks. Make sure that the cables are not bent or pinched by the ferrite core.



- 3 Secure the five BNC connector cables together with the tie-wrap to prevent the ferrite core from moving about.



- 4 Connect a BNC connector that matches the signal output of the computer in use. (Refer to page 6)



FCC-ID: ACJ 933/2/137

Copyright © ViewSonic Corporation, 1998. All rights reserved.  
IBM, XT, AT, 386, 486, and PS/2 are registered trademarks and/or trademarks of International Business Machines Corporation.

Pentium is a registered trademark of Intel Corporation.  
Macintosh II family, LC, LCII, LCIIx, Quadra, and Power Macintosh are registered trademarks of Apple Computer, Inc.

Windows is a registered trademark of Microsoft Corporation.

ViewSonic, the three birds logo, OnView, ViewMaster, and ViewKlear are registered trademarks of ViewSonic Corporation. SuperClear is a trademark of ViewSonic Corporation.

Energy Star is a registered trademark of the U.S. Environmental Protection Agency (EPA).  
VESA is a registered trademark of the Video Electronics Standards Association (VESA) and DDC are trademarks of VESA.

Disclaimer: ViewSonic Corporation shall not be liable for technical or editorial errors or omissions contained herein, nor for incidental or consequential damages resulting from furnishing this material, or the performance or use of this product.

ViewSonic Corporation reserves the right to change product specification without notice. Information in this document may change without notice.

No part of this document may be copied, reproduced, or transmitted by any means, for any purpose without prior written permission from ViewSonic Corporation.

As an Energy Star® partner, ViewSonic Corp. has determined that this product meets the Energy Star® guidelines for energy efficiency.

### Electronic Warranty Registration

Register your monitor at [www.viewsonic.com](http://www.viewsonic.com). It's fast, easy, and will simplify future support needs.

### For Your Records

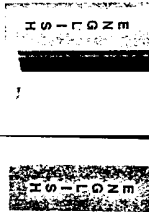
The serial number of this product is on the back of the monitor. You should note the serial number of this product in the space provided on the back of this document in the event of theft or loss. Record on your purchase to aid in identification in the event of theft or loss.  
Product Name: ViewSonic P5775  
Model Number: VCDT521419-1  
Serial Number: 5 876123456789  
Purchase Date: 12/15/98

### Power Cord Safety Guidelines

Caution: Use a power cable that is properly grounded. Always use the AC cords listed below for each area:

- USA.....UL
  - Canada.....CSA
  - Germany.....VDE
  - Switzerland.....SEV
  - Britain.....BASEC/B5
  - Japan.....Electric Appliance Control Act
- In other areas, use AC cord which meets local safety standards.

ViewSonic P5775



### Power Cord Safety Guidelines (continued)

#### AC PLUG CORD PRECAUTIONS FOR THE UNITED KINGDOM

FOR YOUR SAFETY PLEASE READ THE FOLLOWING TEXT CAREFULLY.  
IF THE CUT OFF PLUG IS UNSUITABLE FOR THE SOCKET OUTLET THEN THE PLUG SHOULD BE REPLACED AND DISPOSED OF SAFELY. THERE IS A DANGER OF SEVERE AND FATAL SHOCK IF THE CUT OFF PLUG IS INSERTED INTO AN APPROPRIATE SOCKET.  
If a new plug is to be fitted, please observe the wiring code as shown below.  
In any doubt, please consult a qualified electrician.  
**WARNING: THIS APPLIANCE MUST BE EARTHED.**  
MEDIAN: The wires in this mains lead are coloured in accordance with the following code:  
Green-and-Yellow: Earth  
Blue: Neutral  
Brown: Live

If the coloured wires of the mains lead of this appliance do not correspond with the coloured markings identifying the terminals in your plug, proceed as follows:  
The wire which is coloured GREEN-AND-YELLOW must be connected to the terminal in the plug which is marked with the letter 'E' or by the Earth symbol or coloured GREEN or GREEN-AND-YELLOW.  
The wire which is coloured BLUE must be connected to the terminal in the plug which is marked with the letter 'N' or coloured BLACK. The wire which is coloured BROWN must be connected to the terminal in the plug which is marked with the letter 'L' or coloured RED.

**IMPORTANT NOTICE CONCERNING POWER CORD SELECTION**  
The power cord set for this unit has been enclosed and has been selected according to the country of destination and must be used to prevent electric shock. Use the following guidelines if it is necessary to replace the original cord set, or if the cord set is not enclosed.  
The female receptacle of the cord set must meet CEE-22 requirements and will look like Figure 1 below.

**For the United States and Canada**  
In the United States and Canada the male plug is a NEMA5-15 style (Figure 2). UL Listed, and CSA Labelled. For units which are mounted on a desk or table, type SVT or S/IT cord sets may be used. For units which sit on the floor, only S/IT type cord sets may be used. The cord set must be selected according to the current rating for your unit. Please consult Table A below for the selection criteria for power cords used in the United States and Canada.

**For European Countries**  
In Europe you must use a cord set which is appropriate for the receptacles in your country. The cord set is HAR-Certified, and a special mark that will appear on the outer sheath, or on the insulation of one of the inner conductors.  
If you have any questions concerning which proper power cord to use, please consult with the dealer from whom you have purchased your monitor.

**Figure 1**

**Figure 2**

**Table A**

Cord Type	Size of Conductors in Cord	Maximum Current Rating of Unit
S/IT	18AWG 14AWG 14AWG	10Amps 12Amps 12Amps
SVT	18AWG 17AWG	10Amps 12Amps

ViewSonic P5775



## Quick Installation

- 1 Write the serial number on the back of the monitor in the space provided on page 1 labeled "For your records" and register your monitor's warranty on the Internig at <http://www.viewsonic.com>.
- 2 Read the *Precautions* section thoroughly before installing the monitor. Make sure the computer and the monitor are both turned off before connecting any cables.
- 3a *PC users:* Attach the Video Cable to a Video Input port on the monitor (see below). Then connect the other end to your computer.
- 3b *Macintosh® users:* A Macintosh computer requires a ViewSonic® Macintosh adapter (part No. VMAC-1). To order an adapter, contact ViewSonic Customer Support. See the back cover of this manual. You will need to provide the serial number of your monitor.
- 4 Plug the attached Monitor Base Cord from AC OUT (shown below) to the monitor's AC IN port.
- 5 Attach the power cord to the back of the monitor's base (AC IN). Then plug the other end of the power cord into the power source (wall socket).

...continued

- For best viewing conditions sit at least 18" from the monitor.
- **AVOID TOUCHING THE SCREEN WITH YOUR FINGERS.** Oils from the skin are difficult to remove.
- **NEVER REMOVE THE REAR COVER.** The monitor contains high-voltage parts. You may suffer serious injury if you touch these parts.
- Avoid exposing the monitor to direct sunlight or another heat source. The monitor should be facing away from direct sunlight to reduce glare.
- Choose a well ventilated area to position your monitor. Do not place anything on the monitor that prevents adequate dissipation of heat.
- Ensure the area around the monitor is clean and free of moisture.
- Keep the monitor away from magnets, motors, transformers, speakers, and televisions.
- Do not place heavy objects on the monitor, video cable, or power cord.
- If smoke, abnormal noise, or strange odor is present, immediately switch the monitor off and call your dealer or ViewSonic. It is dangerous to continue using the monitor.
- Always handle your monitor with care when moving it.

## Getting Started

Congratulations on your purchase of a Professional Series ViewSonic PS775 monitor! *Important: Save the original box and all packing material for future shipping needs.*

**NOTE:** This product was designed for operating in the region where it was purchased. Also, the word "Windows" in this user guide refers to the following Microsoft® operating systems: Windows 95, Windows 98, Windows NT (5.0).

### Package Contents

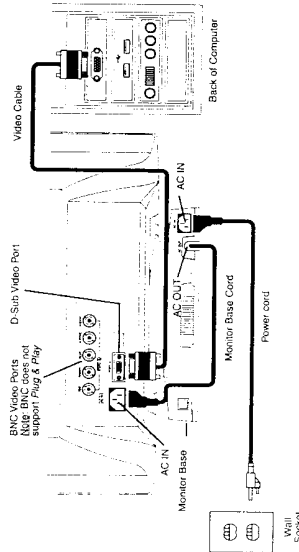
Your ViewSonic PS775 package includes the following:

- ViewSonic PS775 monitor with USB\* Hub located on the monitor base
- Video cable with 15 pin high density mini D-sub connector
- Power cords
- USB (Universal Serial Bus) cable
- User's Guide
- INF: installation file on diskette or CD-ROM
- **USB (Universal Serial Bus)** is a peripheral bus standard that allows USB peripheral devices to be connected to a computer. USB devices are attached to a USB computer or this USB technology also allows multiple USB devices to run simultaneously, such as a USB compatible mouse, keyboard, scanner, digital camera, printer, joystick(s), etc.

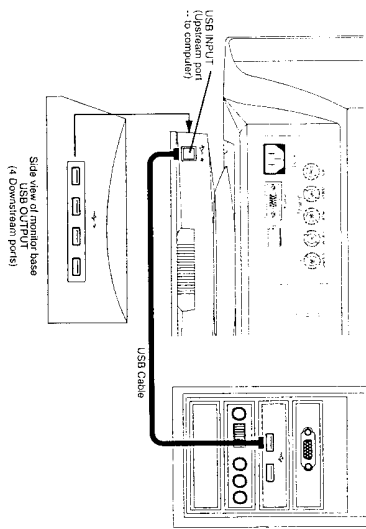
### Precautions

- For best viewing conditions sit at least 18" from the monitor.
- **AVOID TOUCHING THE SCREEN WITH YOUR FINGERS.** Oils from the skin are difficult to remove.
- **NEVER REMOVE THE REAR COVER.** The monitor contains high-voltage parts. You may suffer serious injury if you touch these parts.
- Avoid exposing the monitor to direct sunlight or another heat source. The monitor should be facing away from direct sunlight to reduce glare.
- Choose a well ventilated area to position your monitor. Do not place anything on the monitor that prevents adequate dissipation of heat.
- Ensure the area around the monitor is clean and free of moisture.
- Keep the monitor away from magnets, motors, transformers, speakers, and televisions.
- Do not place heavy objects on the monitor, video cable, or power cord.
- If smoke, abnormal noise, or strange odor is present, immediately switch the monitor off and call your dealer or ViewSonic. It is dangerous to continue using the monitor.
- Always handle your monitor with care when moving it.

ENGLISH



DISCLAIMER: Functionality differs with each monitor and computer set-up. USB functions require Windows® 98 or Windows 95 OSR 2.1. However, certain computers, video cards, and versions of Windows 95 may not be compatible with USB functions. Macintosh® operating systems are not compatible with USB functions.



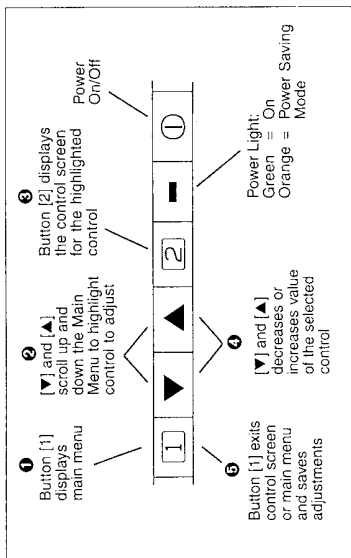
### Quick Installation, continued

- To use the USB Hub, connect the supplied USB cable from the USB output on your computer to the USB input (upstream port) on the rear of the monitor base. See the diagram below.
  - Connect any USB device(s) into any of the monitor USB outputs (downstream ports) on the side of the base.
  - Turn the computer on. Then, press the POWER button on the front of the monitor ON. (The Power light turns green.)
  - Adjust the user controls to suit your personal preference. See the *Operation* section, and if there are any problems, see the *Troubleshooting* section.
- Important:** To set the resolution, see your computer's or graphics card's user guide for instructions. For a list of Preset Trimming Modes and the pre-adjusted screen resolution for this monitor, see Preset Trimming Modes in the Specifications section.
- Installation is completed! Enjoy your new monitor!**

## Operation

To adjust the monitor, follow the numbered steps in sequence as shown below.

### Front Control Panel



### OnView® Main Menu

- Press button [1] to display the Main Menu shown below.
- Press the [▼] or [▲] buttons to select a control option to adjust.
- Press button [2] for an individual control screen.
- At each individual control screen, press the [▼] or [▲] to make adjustments.
- Press button [1] to save changes and exit the screen. The Main Menu also clears automatically approximately 20 seconds after pressing any button.



Changes are automatically saved when [1] is pressed.

## OnView® Controls

- ☀ **Contrast/Brightness:** Press button [2] to toggle between Contrast and Brightness.

- **Contrast** adjusts foreground white level of screen image. NOTE: Pressing the [▼] and [▲] buttons simultaneously increases Contrast to its maximum.

NOTE: You can also access the Contrast control by pressing either [▼] or [▲] before accessing the Main Menu.

- ☀ **Brightness** adjusts background black level of screen image. Press [▼] or [▲] to adjust.

NOTE: Pressing the [▼] and [▲] buttons simultaneously returns Brightness to its factory preset level.

*Shortcut:* Before displaying the OnView menu, press the [▼] or [▲] button. Press [▼] or [▲] to adjust. Press button [2] to toggle between Brightness and Contrast.

- ☑ **Size & Position:** Press button [2] to select one of the following controls to adjust.

- 🔍 **Zoom** expands and contracts the entire screen image. [▼] contracts the image, [▲] expands the image.

- 📏 **Horizontal Position** adjusts the horizontal position of the screen image. [▼] moves screen image left, [▲] moves screen image right.

- 📏 **Horizontal Size** adjusts the width of the screen image. [▼] decreases width, [▲] increases width.

- 📏 **Vertical Position** adjusts the vertical position of the screen image. [▼] moves screen image down, [▲] moves image screen up.

- 📏 **Vertical Size** adjusts the height of the screen.

[▼] decreases height of screen image, [▲] increases height of screen image.

...continued

Changes are automatically saved when [1] is pressed.

- 📏 **Geometry:** Press button [2] to select one of the following controls to adjust.

- 📏 **Vertical Pincushion** straightens vertical sides of the screen. [▼] curves vertical edges inward, [▲] curves vertical edges outward.

- 📏 **Hooking** straightens the four corners of the screen image. [▼] or [▲] to adjust.

- 📏 **Side Pincushion Balance** curves the screen's vertical edges to the left or right. [▼] curves vertical edges to left, [▲] curves vertical edges to right.

- 📏 **Trapezoid** makes vertical edges of the screen image parallel. [▼] narrows top and widens bottom, [▲] widens top and narrows bottom.

- 📏 **Parallelogram** slants vertical edges of the screen to the left or right. [▼] slants vertical edges to the left, [▲] slants vertical edges to the right.

- 📏 **Tilt** rotates entire screen image. [▼] rotates screen counter-clockwise, [▲] rotates screen clockwise.

NOTE: Pressing the [▼] and [▲] buttons simultaneously adjusts rotation to its factory preset level.

- 📏 **ViewMatch® Color** adjusts the color temperature.

1) Use the [▼] and [▲] buttons to select 1: 9300° K + 8 MPCD, 2: 7500° K, 3: 6500° K, 4: 5000° K or 5: User Color.

2) If you select 5: User Color, press button [2] to display the USER COLOR adjustment screen.

- 📏 **User Color Level** Adjusts the color intensity of individual colors. [▲] increases the amount of color in the image, [▼] decreases the amount of color in the image.

NOTE: Press button [2] to select the red, green, or blue control.

- 📏 **ViewMeter®/Degauss:** Press button [2] to toggle between ViewMeter and Degauss.

- 📏 **ViewMeter®** Displays the monitor's current horizontal and vertical synchronization signal. Use [▼] or [▲] button to toggle between 15-pin D-sub and BNC connectors. If you are using the supplied video cable, Port A is the correct position.

- 📏 **Degauss:** Removes the build-up of magnetic fields that can affect color purity and convergence. Press the [2] button to degauss.

Changes are automatically saved when [1] is pressed.

➤ **Memory Recall:** If the monitor is operating in a factory preset timing mode (see page 12), this control will reset the image to the factory preset size, position and geometry settings. If the monitor is operating in a user defined mode, this control has no effect.

➤ **Video Input Signal Level:** Changes the video input signal level to match the computer's signal level.

➤ **Moire Reduction:** Press button [2] to toggle between Horizontal and Vertical Moire controls.

➤ **Horizontal Moire:** The control adjusts for horizontal lines caused by interference between the CRT and focus gun caused by input signals, video patterns, etc. [▲] increases the amount of adjustment, [▼] decreases the amount of adjustment.

**CAUTION:** Over-correction of moire can affect the picture quality.

➤ **Vertical Moire:** The control adjusts for vertical lines caused by interference between the CRT and focus gun caused by input signals, video patterns, etc. [▲] increases the amount of adjustment, [▼] decreases the amount of adjustment.

**CAUTION:** Over-correction of moire can affect the picture quality.

➤ **Language Selection:** Allows the user to choose the language in which the control names are displayed.

➤ **OSD Position:** Press the [2] button to re-position the OSD.

**Self-Test:** When there is no signal input (because the cable is not connected or no video signal is coming from the computer), or the monitor is in power saving mode, the self-test screen can be called by pressing the [1], [▼], [▲], or [2] buttons. An error message screen appears when the horizontal or vertical sync signals are outside of the permitted range.

ENGLISH  
ENGLISH

## Information

### Specifications

CRT	Type	17" (16.0" viewable diagonal) 0.25mm Dots / 120° reflection SuperClear™, Active™ anti-reflection, anti-glare)
Input Signal	Video	RGB Analog, HV Separated (TTL), Composite, Sync-on-green (-30.97kHz, 1, 50-180Hz Sync
Compatibility	PC Macintosh**	Up to 1600 x 1200 Power Macintosh™, up to 1600 x 1200
Maximum Refresh Rates**	1600 x 1200 NI @ 73 Hz 1600 x 1200 NI @ 77 Hz 1200 x 1024 NI @ 90 Hz 1152 x 870 NI @ 105 Hz	1024 x 768 NI @ 118 Hz 800 x 600 NI @ 149 Hz 640 x 480 NI @ 180 Hz 640 x 480 NI @ 180 Hz
Power	Voltage	AC 90-132, 198-264 VAC, 50/60 Hz
Display Area	Default Full Scan	300mm (H) x 225mm (V) (Typical) 325mm (H) x 244mm (V) (Depends on signal timing)
Operating Conditions	Temperature Humidity Altitude	41°F to 95°F (5°C to 35°C) 5% to 90% (no condensation) to 10,000 feet
Storage Conditions	Temperature Humidity Altitude	-41°F to +140°F (-20°C to +60°C) 5% to 90% (no condensation) to 40,000 feet
Dimensions	Physical (monitor)	410mm (W) x 429mm (H) x 385mm (D) 16.1" (W) x 16.9" (H) x 15.2" (D)
Weight	Net	18.0 kgs. (39.6 lbs.) (monitor only)
Regulations		UL, DHS, FCC-B, DDC-B, CCB, TÜV/ErG, CSA, TCO 95, CE, MPRI, NOM, SCS, EMC, VCCI, S-Mark, ISO9001, B VCCI-B, BCCQ, DENKO, DENKO, SEMKO, FIMKO, P-01, SANSO
Power saving modes	On DPMS Stand By DPMS Suspend DPMS Off	<125W (typical green LED) <15W (orange LED) <15W (orange LED) <3W (orange LED)
Preset Timing Modes (the monitor has been pre-adjusted to VESA® 1024 x 768 @ 75Hz)	VGA 640 x 350 @ 70 Hz VGA 640 x 480 @ 75 Hz VGA 640 x 480 @ 80 Hz VESA 640 x 480 @ 75 Hz, 85 Hz	VESA 800 x 600 @ 75 Hz, 85 Hz VESA 1024 x 768 @ 75 Hz, 85 Hz Macintosh® 632 x 624 @ 75 Hz

\*\* A Macintosh computer requires a ViewSonic® Macintosh adapter. To order an adapter, contact customer support. See the manual for details.  
\* Do not set the graphics card in your computer to exceed these maximum refresh rates.  
\*\* Data may result in permanent damage to the monitor.  
- Up to 1600 x 1200 for FCC class B.



## Troubleshooting

- **No power**
  - Press Power button ON.
  - Make sure AC power cord is securely connected to back of monitor and to a power outlet.
  - Plug another electrical device (like a radio) into power outlet to verify that outlet is supplying proper voltage.
- **Power on but no screen image**
  - Make sure video cable supplied with monitor is tightly secured to video output port on back of computer. If other end of video cable is not attached permanently to monitor, tightly secure it to monitor.
  - Adjust the brightness and contrast.
  - Check this user's guide to see if an adapter is required for proper signal continuity between graphics card and monitor.
- **Flickering**
  - Not enough power supplied. Connect monitor to different outlet. If using surge protector, reduce number of devices plugged in.
  - Check ViewMate® to verify refresh rate (vertical frequency) is 75 Hz or higher. See the Specifications section.
  - Make sure graphics card in your computer can use non-interlaced mode at desired frequencies. To enable your graphics card to support higher refresh rates, try selecting lower colors or running lower resolutions.
  - Remove any devices from area around monitor that emit magnetic fields, such as radios, surge protectors, unshielded speakers, fluorescent lights, AC power converters, desk fans, etc.
- **Wrong or abnormal colors**
  - If any colors (red, green, or blue) are missing, check video cable to make sure it is securely connected. Loose pins in the cable connector could cause a bad connection.
  - Connect monitor to another computer.
  - Turn monitor OFF, wait one minute, then turn ON again. *Do this only once.*
  - If you have an older graphics card, contact customer support for a non-DDC adapter.
- **Entire screen image scrolls (rolls) vertically**
  - Make sure video input signals are within monitor's specified frequency range.
  - Try monitor with another power source, graphics card, or computer system.
  - Connect video cable securely.
- **Control buttons do not work**
  - Press only one button at a time.
- **USB (Universal Serial Bus) functions do not work**
  - Make sure USB cable is securely and correctly installed.
  - Make sure the appropriate USB-supported operating system is installed in your computer.

## Cleaning the Monitor

- MAKE SURE THE MONITOR IS TURNED OFF.
- NEVER SPRAY OR POUR ANY LIQUID DIRECTLY ONTO THE SCREEN OR CASE.

### To clean the screen

- 1 Wipe the screen with a clean, soft, lint-free cloth. This removes dust and other particles.
- 2 If still not clean, apply a small amount of non-ammonia, non-alcohol based glass cleaner onto a clean, soft, lint-free cloth, and wipe the screen.

### To clean the case

- 1 Use a soft, dry cloth.
- 2 If still not clean, apply a small amount of a non-ammonia, non-alcohol based, mild non-abrasive detergent onto a clean, soft, lint-free cloth, then wipe the surface.

### DISCLAIMER

ViewSonic does not recommend the use of any ammonia or alcohol-based cleaners on the monitor screen or case. Some chemical cleaners have been reported to damage the screen and/or case of the monitor. ViewSonic will not be liable for damage resulting from use of any ammonia or alcohol-based cleaners.

## LIMITED WARRANTY VIEWSONIC P5775 MONITORS

When the warranty covers:  
ViewSonic warrants its products to be free from defects in material and workmanship during the warranty period. If a product proves to be defective in material or workmanship during the warranty period, ViewSonic will at its sole option repair or replace the product with a like product. Replacement product or parts may include remanufactured or refurbished parts or components.

### How long the warranty is effective:

The ViewSonic P5775 color monitor, including the display tube, are warranted for three (3) years for all parts and three (3) years for all labor from the date of the first consumer purchase.

### Who the warranty protects:

The warranty is valid only for the first consumer purchaser.

### What the warranty does not cover:

1. Any product on which the serial number has been defaced, modified or removed
2. Damage, deterioration or malfunction resulting from:
  - a. Accident, misuse, neglect, fire, water, lightning, or other acts of nature, unauthorized product modification, or failure to use the product in accordance with the instructions.
  - b. Abuse, including but not limited to, use for purposes not authorized by ViewSonic.
  - c. Any damage to the product due to shipment.
  - d. Removal or installation of the product.
  - e. Causes external to the product, such as electric power fluctuations or failure.
  - f. Use of supplies or parts not meeting ViewSonic's specifications.
  - g. Normal wear and tear.
  - h. Any other cause which does not relate to a product defect.
3. Removal, installation, and set up service charges.

### How to get service:

1. For information on obtaining warranty service, call ViewSonic. The customer support telephone number is 1-800-688-6688. In the U.S. and Canada, call 1-800-688-6688. From outside the U.S. and Canada, call 1-800-688-6688. From Europe, call 1-2031-643-600. From Asian/Pacific Rim countries, call 1-2031-643-600. Internet E-Mail address: [vsatech@viewsonic.com](mailto:vsatech@viewsonic.com) or on the World Wide Web: <http://www.viewsonic.com>
2. To obtain warranty service, you will be required to provide (a) the original dated sales slip, (b) your name, (c) your address, (d) a description of the problem and (e) the serial number of the product.
3. Take or ship the product prepaid in the original container to your ViewSonic dealer, any ViewSonic distributor, or the nearest ViewSonic service center. For additional information or the name of the nearest ViewSonic service center, contact your ViewSonic dealer or ViewSonic.
4. For additional information or the name of the nearest ViewSonic service center, contact your ViewSonic dealer or ViewSonic.

Limitation of implied warranties:  
THERE ARE NO WARRANTIES, EXPRESS OR IMPLIED, WHICH EXTEND BEYOND THE DESCRIPTION CONTAINED HEREIN INCLUDING THE IMPLIED WARRANTY OF MERCHANTABILITY AND FITNESS FOR A PARTICULAR PURPOSE.

### Exclusion of damages:

VIEWSONIC'S LIABILITY IS LIMITED TO THE COST OF REPAIR OR REPLACEMENT OF THE PRODUCT. VIEWSONIC SHALL NOT BE LIABLE FOR: PRODUCT DAMAGE TO OTHER PROPERTY CAUSED BY ANY DEFECTS IN THE PRODUCT. DAMAGES BASED UPON ECONOMIC LOSS, LOSS OF PROFITS, LOSS OF BUSINESS, OPPORTUNITY LOSS, LOSS OF BUSINESS RELATIONSHIPS, OR OTHER COMMERCIAL LOSS, EVEN IF ADVISED OF THE POSSIBILITY OF SUCH DAMAGES.

### ANY OTHER DAMAGES, WHETHER INCIDENTAL, CONSEQUENTIAL OR OTHERWISE.

### ANY CLAIM AGAINST THE CUSTOMER BY ANY OTHER PARTY.

### Effect of state law:

This warranty gives you specific legal rights, and you may also have other rights which vary from state to state. Some states do not allow limitations on implied warranties and/or do not allow the exclusion of incidental or consequential damages, so the above limitations and exclusions may not apply to you.

### Sales outside the U.S.A.:

For ViewSonic products sold outside of the U.S.A., contact your ViewSonic dealer for warranty information and service.

ViewSonic P5775

REV 7/706

1573