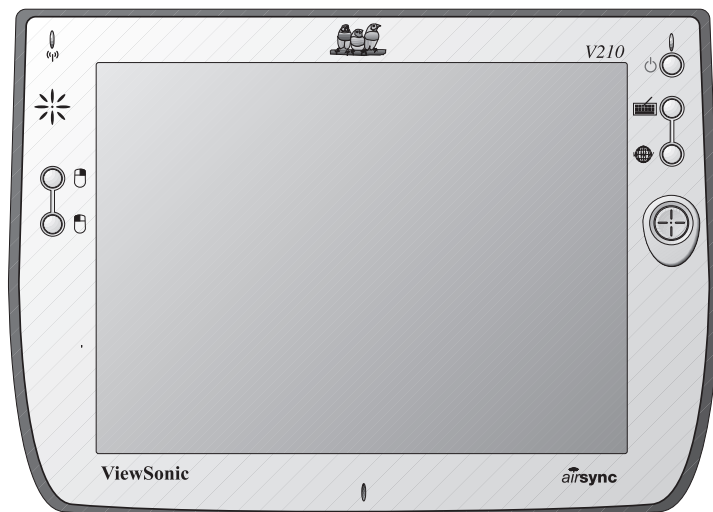


ViewSonic®

airsync™ Display V210



Hardware Guide



Contents

Introduction

| | |
|--|---|
| The airsync Display V210 | 2 |
| Precautions | 2 |
| airsync Display V210 Features | 3 |
| Front Control Buttons and Features | 3 |
| Rear Connection Ports & Panels | 4 |

Basic Setup

| | |
|---|---|
| Charging the Battery | 5 |
| Using the AC/DC Power Converter | 5 |
| Setting Up Software | 6 |
| Basic Software | 6 |
| About the airsync Client Software | 6 |

Using the airsync Display V210

| | |
|--|----|
| The Buttons | 7 |
| Using the Stylus | 8 |
| Moving Windows | 9 |
| Calibrating the Touch Screen | 9 |
| Adjusting the Stylus Double-tap Rate | 9 |
| Battery & Power Properties | 10 |
| Battery Power Status | 11 |
| Changing the Battery | 11 |
| Antenna Signal Properties | 12 |
| Wireless Connection Signal Status | 12 |
| Network Settings | 13 |
| Make New Connection Settings | 13 |
| PCI-ISLP21 Settings | 14 |
| Resetting the airsync V210 | 16 |
| Soft Reset | 16 |
| Hard Reset | 16 |
| Firmware Image Upgrade | 16 |
| PCMCIA Cards | 17 |
| Using a PCMCIA Card | 17 |

Optional Accessories

| | |
|--|----|
| The Docking Station | 18 |
| Commercially Available Accessories | 19 |
| External USB Keyboard | 19 |
| External USB Mouse | 19 |
| External Headphone Set | 19 |
| External Microphone | 19 |

Appendix

| | |
|---|----|
| airsync Display V210 Specifications | 20 |
| Cleaning and Maintenance | 22 |
| Customer Support | 22 |
| Limited Warranty | 23 |
| Safety Guidelines | 24 |
| Compliance and Safety Notices | 25 |
| Radio Frequency Interference (RFI) Compliance | 25 |
| Safety Notices | 27 |

Copyright © ViewSonic Corporation, 2003. All rights reserved.

airsync is a trademark of ViewSonic Corporation. ViewSonic, and the three birds logo are registered trademarks of ViewSonic Corporation.

Microsoft, Windows, Windows CE, Windows CE Inbox, Explorer and Internet Explorer, Pocket Word, Microsoft Word, ActiveSync, MSN, Excel, Windows RDP, Microsoft Windows CE for Smart Displays, .NET Compact Framework, and the Windows logo are trademarks of Microsoft Corporation in the United States and other countries.

Citrix, WindView, and ICA are registered trademarks of Citrix Systems, Inc. MetaFrame is a trademark of Citrix Systems, Inc.

Intel and XScale are registered trademarks of Intel Corporation.

VESA is a registered trademark of the Video Electronics Standards Association.

CompactFlash is a trademark of the CompactFlash Association.

ENERGY STAR® is a registered trademark of the U.S. Environmental Protection Agency (EPA).

As an ENERGY STAR® partner, ViewSonic Corporation has determined that this product meets the ENERGY STAR® guidelines for energy efficiency.

Disclaimer: ViewSonic Corporation shall not be liable for technical or editorial errors or omissions contained herein; nor for incidental or consequential damages resulting from furnishing this material, or the performance or use of this product.

In the interest of continuing product improvement, ViewSonic Corporation reserves the right to change product specifications without notice. Information in this document may change without notice.

No part of this document may be copied, reproduced, or transmitted by any means, for any purpose without prior written permission from ViewSonic Corporation.

Product Registration

To meet your future needs, and to receive any additional product information as it becomes available, please register your product on the Internet at: www.viewsonic.com. The *airsync* Display V210 Installation CD-ROM also provides an opportunity for you to print the registration form, which you may mail or fax to ViewSonic.

For Your Records

| | |
|-------------------------|--|
| Product Name: | ViewSonic <i>airsync</i> Display V210 |
| Model Number: | VSMW24668-1W |
| Document Number: | A-CD-ASV210-UG Rev. 1 9-9-03 |
| Serial Number: | _____ |
| Purchase Date: | _____ |

Product disposal at end of product life

ViewSonic is concerned about the preservation of our environment. Please dispose of this product properly at the end of its useful life. Your local waste disposal company may provide information about proper disposal.

Introduction

The *airsync* Display V210

This hardware guide will help you set-up your *airsync* Display V210 and introduce you to its many features.

Important: Save the original box and all packing material for future shipping needs.

Your *airsync* Display V210 package contents include:

- The ViewSonic *airsync* Display V210
- Quick Start Guide
- *airsync* Display V210 Battery
- AC/DC Power Adapter with Power Cord
- Stylus (2) and Stylus Tether (1)
- USB Mini-B to A Setup Cable (Blue)
- Mini-VGA Cable (Black)
- V210 CD (with the User Guide)



Go to the Help and Support Center on your PC for details on using Microsoft software. This manual only covers using the ViewSonic *airsync* Display V210 hardware.

Precautions

- For best viewing conditions view the screen from a distance of 15" to 18".
- **DON'T TOUCH THE SCREEN WITH YOUR FINGERS.** Oils from the skin are difficult to remove.
- **NEVER REMOVE THE REAR COVER.** Your *airsync* Display V210 contains high voltage parts. You may suffer serious injury if you touch these parts.
- Avoid exposing the screen to direct sunlight or another heat source. The screen should be facing away from direct sunlight to reduce glare.
- Always handle your *airsync* Display V210 with care; dropping your *airsync* Display V210 could void the warranty.
- Do not operate your *airsync* Display V210 outside in a wet, damp or extremely cold environment.
- Do not place heavy objects on the screen, video cable, or power cord.
- If smoke, abnormal noise, or strange odor is present, immediately switch the *airsync* Display V210 off and call your dealer or ViewSonic.
- Use only the AC/DC power adapter supplied with your *airsync* Display V210.

airsync Display V210 Features

Front Control Buttons and Features



Figure 1: Front of *airsync* Display V210

Features, Lights, and Buttons

1. Antenna Activity Indicator Light
2. Speaker
3. Mouse Button - Right
4. Mouse Button - Left
5. Power On/Off Indicator Light
6. On/Off Switch
7. Input Panel On/Off Switch
8. Web Browser Button - Log On/Off to the Internet
9. Cursor Navigation Button
10. Microphone

Rear Connection Ports & Panels

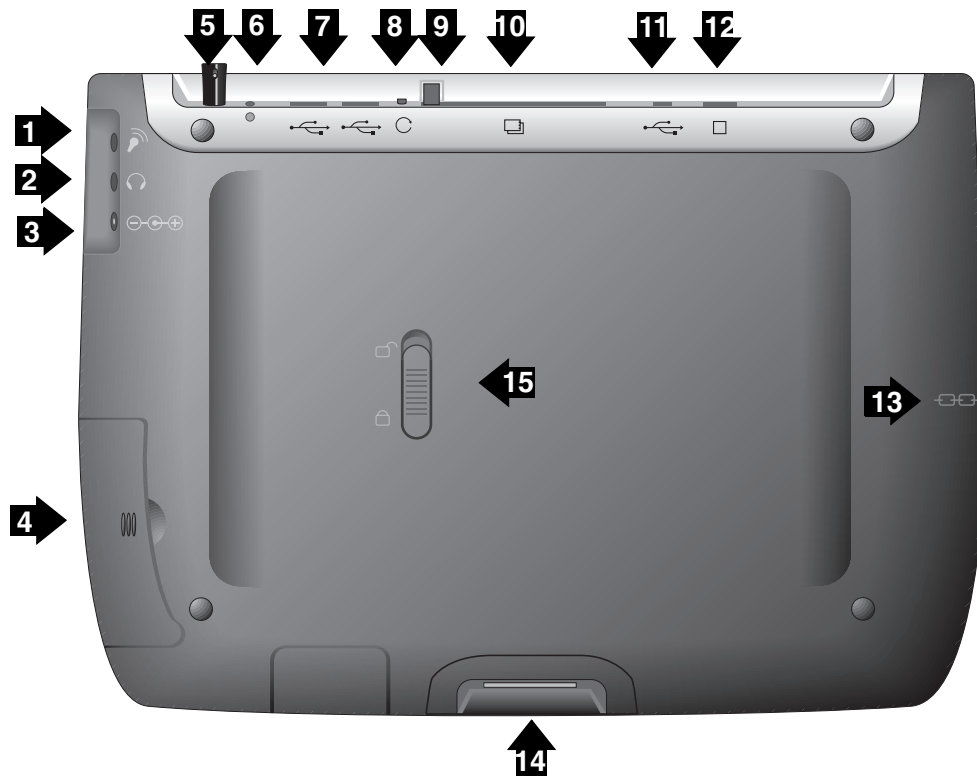


Figure 2: Back of *airsync* Display V210

Ports, Buttons, Slots, Jacks, & Switches

1. Microphone Jack
2. Headphone Jack
3. DC Power Jack
4. Main Battery Port
5. Stylus in Storage Slot
6. Stylus Tether Port
7. USB Type A Ports (Two) - for Keyboard and Mouse
8. Reset Button
9. PCMCIA Eject Button
10. PCMCIA Card Slot
11. USB Mini-B Port (One) - for Setup Cable
12. Mini-VGA Port
13. Security Lock Port (Kensington Compatible)
14. Docking Port
15. Main Battery Latch

Basic Setup

Your *airsync* Display V210 features powerful software and hardware allowing you to connect to your home PC in order to view and edit files, wirelessly send/receive e-mail, and explore the World Wide Web.

This section explains the ports, cables, connections and hardware used to get you started. More details and connection options are explained in the next section, *Using the airsync Display V210*.



Go to the Help and Support Center on your PC for details on using Microsoft software. This manual only covers using the ViewSonic *airsync* Display V210 hardware.

Charging the Battery

Using the AC/DC Power Converter

Before using the *airsync* Display V210 for the first time, charge the battery for at least 5 hours. You may charge, recharge, and/or operate your *airsync* Display V210 with available AC power using the AC/DC power converter. Use the AC/DC power converter as shown in the figure below.

Caution: Use only the power converter supplied with your *airsync* Display V210.



- 1 Plug the AC/DC cable into the *airsync*.
- 2 Connect the power cord to the AC/DC adapter.
- 3 Plug the power cord into an AC outlet.

Figure 3: Using the AC/DC Power Converter

An optional *airsync* docking station, described later in this manual, may also be used to charge, recharge, and/or operate your *airsync*.

For additional information on battery charging and operation, please review the Battery Power & Properties section of this guide.

Setting Up Software

Basic Software

The following software comes with the *airsync* Display V210:

Windows CE® 4.2

- Internet Explorer
- Windows Explorer
- Media Player
- MS WordPad
- Solitaire
- Microsoft Inbox

Citrix® Client

Microsoft ActiveSync

Microsoft File Viewers

- MS Excel Viewer
- MS Image Viewer
- MS PDF Viewer
- MS PowerPoint Viewer
- MS Word Viewer

ViewSonic *airsync*® Client

Your firm's software development department will have already installed and set up all software necessary for your *airsync* Display V210 to perform its designated function(s) in the field.

About the *airsync* Client Software

The *airsync* client software included in the V210 software bundle allows the device to become *airsync*-enabled. This permits your V210 to connect with an *airsync* Web Service. The capability this software provides permits optional background multi-device management by your IT administrator. A typical use for *airsync* would be to allow your device to automatically check on-line for V210 software updates at regular preset intervals.

Using the *airsync* Display V210

The Buttons

The buttons on the right and left side of the *airsync* Display V210 screen give you quick access to utilities and provide navigational control.



Figure 4: The *airsync* Display V210 Buttons

- A. Right-click Button** - Simulates the right-click button on a mouse.
- B. Left-click Button** - Simulates the left-click button on a mouse.
- C. Power Button** - Cycles the unit between On and Stand-by modes.
- D. Input Panel Button** - Toggles the on-screen virtual Keyboard On/Off enabling data input using the stylus.
- E. Web Browser Button** - Launches the V210 web browser application.
- F. Cursor Control Button** - Allows you to move the cursor without having to use the stylus or a mouse.

Using the Stylus

Use the stylus to “tap” or “double-tap” on an application icon and to select items on the menu. The stylus is also used to “type” on the Input Panel and to write notes when in handwriting recognition mode. The two styli that are supplied with your *airsync* Display V210 are designed for your screen. Use of other pointers could damage your screen.



Figure 5: Stylus

When not in use, you can conveniently place your stylus in the storage slot located on the top edge of your *airsync* Display V210. A Stylus Tether has been provided to allow you to attach the stylus to the *airsync* so it will not become lost or misplaced.



Figure 6: Stylus with Tether

Moving Windows

- 1** To move a window on the screen, press on the desired window's title-bar gently with the stylus.
- 2** Drag the window slowly to a new location.

Calibrating the Touch Screen

If your touch screen is not responding accurately to taps with the stylus, you may need to recalibrate the screen. To do so:

- 1** Tap on the control panel's Settings button - the Settings window will open
- 2** Tap on the General Tab
- 3** Tap on the Realign Button in the Stylus section
- 4** Follow the on-screen instructions
- 5** When finished, tap the screen - the re-calibration is complete

The instructions will ask you to place the stylus on a series of cross-hair target symbols. When doing so, rather than just tapping the screen, hold the stylus in place for a second or two as directed until the program responds.

Adjusting the Stylus Double-tap Rate

The double-tap rate can be set in the Settings window:

- 1** Tap on the control panel's Settings button - the Settings window will open
- 2** Tap on the General Tab
- 3** Double-tap on the checkerboard graphic to set your double tap rate
- 4** Close the Settings window

To save your user and wireless settings, power-down the unit then resume.

Battery & Power Properties

Your *airsync* Display V210 has two power sources, AC (using the AC/DC converter) or battery. To run your *airsync* Display V210 from an AC outlet, use the supplied AC/DC adapter cable.

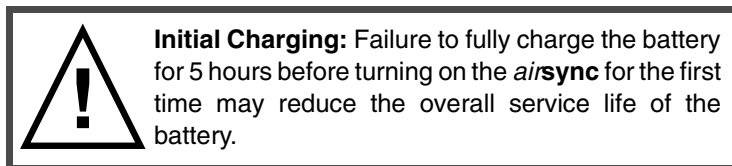
It takes the *airsync* Display V210 approximately two (2.5) hours to recharge while not in use and four (4) hours while in use. In normal operation (when not connected to an AC outlet), the *airsync* Display V210 operates on battery power alone. A fully charged battery can last up to three (3) hours depending on power consumption factors such as the screen's brightness setting. The use of optional PCMCIA card accessories will also affect battery life.

CAUTION: Replace only with an *airpanel* V110 series battery:

Part Number MW-BAT-003

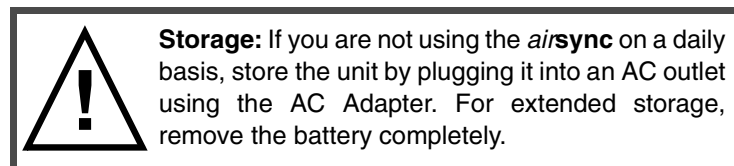
Battery Usage Precautions:

Charging



Storage

If the battery is left unattended too long, it may discharge completely. Complete discharge may damage the battery's ability to recharge properly.



Battery Removal

To remove the battery, slide the Battery Latch then slide out the battery.

CAUTION: Removing the battery can cause the loss of file changes. Before removing the battery, we strongly recommend that you either:

- Drag any changed files that you want to protect to the V210's Persistent Storage folder (under My Computer) before removing the battery.

or

- Plug the AC Adapter into the V210 before removing the battery to prevent a disruptive interruption of power.

Battery Power Status

The Power Level Icon

To determine the Main battery's current charge level, double-tap the Power icon in the Control Panel window under My Computer. The Power Properties window will open to Battery Status.

Battery Status displays the percentage of power left in your Main battery. The Status section also rates the quality of your External power connection and Backup battery as either Good, Low, or Very Low.

The Power Status LED

The Power Status LED at the upper right corner of the *airsync* also displays useful information in the battery's current status and charge level.

In normal battery powered operation:

- Off - the device is powered off
- Solid Green - power level OK
- Solid Yellow - power level low
- Blinking Yellow - power level critically low

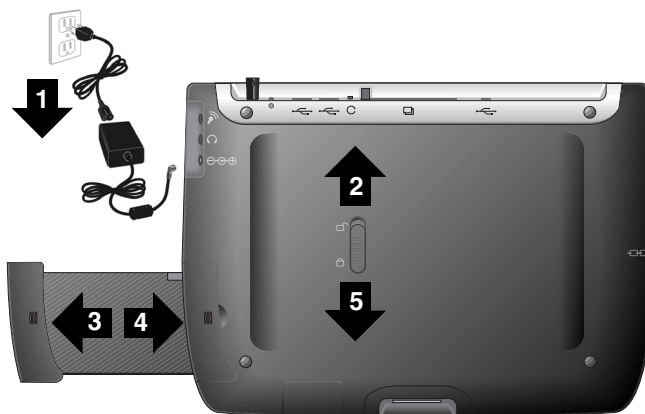
When using the AC Power Adapter:

- Solid Green - AC powered, battery charged
- Blinking Green - AC powered, battery charging

When using the optional docking station (described later in the manual):

- Solid Green - AC powered, battery charged
- Blinking Green - AC powered, battery charging

Changing the Battery



- 1 Attach the AC Power Adapter to protect changed files from power outage.
- 2 Slide the Battery Latch upward into the unlock position.
- 3 Slide out the old battery.
- 4 Slide in the new battery.
- 5 Slide the Battery Latch into the locked position.

Figure 7: Battery Removal and Insertion

Antenna Signal Properties

Your *airsync* Display V210 can use a wireless radio signal standard called Wi-Fi (802.11b) to communicate with a local Wi-Fi network connected to a modem. The quality of your radio connection signal can be weakened by excessive distance and by intervening materials such as walls and furnishings. If the wireless connection seems to work intermittently, check the quality of your wireless connection.

Wireless Connection Signal Status

The Antenna Status LED

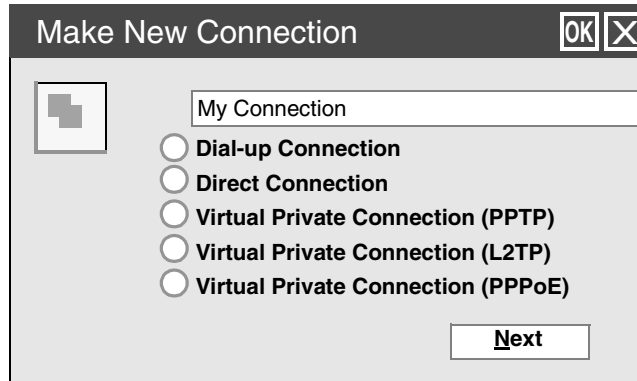
The Antenna Status LED at the upper left corner of the *airsync* also displays useful information on the wireless signal connection:

- Off - no signal, no connection
- Solid Green - good signal level
- Blinking Yellow - poor signal level

Network Settings

Make New Connection Settings

Accessed by from Start on the Task Bar by selecting Settings, Control Panel, then Network and Dial-up Connections. This panel allows you to add, name, and configure five types of connection options to your *airsync* Display V210:



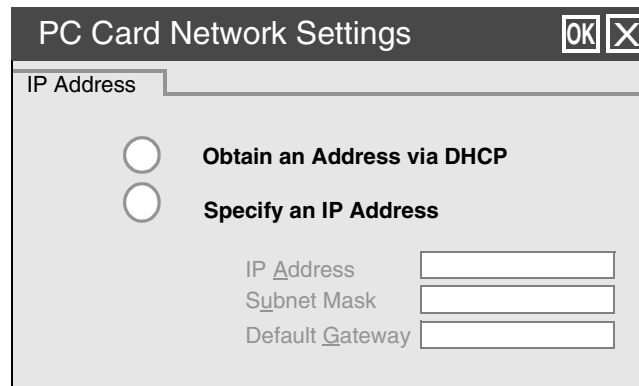
- Dial-up Connection - through modem (not currently supported)
- Direct Connection - through cable
- Virtual Private Network (PPTP) - through host or IP address
- Virtual Private Network (L2TP) - through host or IP address
- Virtual Private Network (PPPoE) - through host or IP address

Each connection type has options for Security and TCP/IP settings accessed by tapping the Next button. The Dial-up and Direct connections have additional options for the configuration of port settings and connection preferences.

PCI-ISLP21 Settings

Accessed from Start on the Task Bar by selecting Settings, Control Panel, then Network and Dial-up Connections. This panel allows you to assign IP server address and Domain Name server address for your *airsync* Display V210.

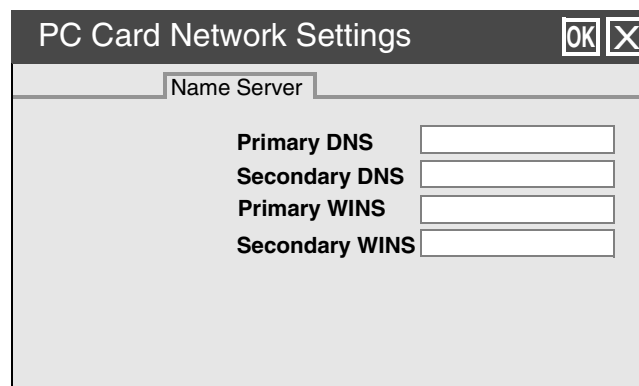
ISP Address Tab - Allows you to chose between an automatically set IP address (DHCP) or a specified IP (user filled-in) address.



The screenshot shows a dialog box titled "PC Card Network Settings" with "OK" and "X" buttons in the top right corner. The "IP Address" tab is selected. It contains two radio buttons: "Obtain an Address via DHCP" (which is selected) and "Specify an IP Address". Below the radio buttons are three text input fields labeled "IP Address", "Subnet Mask", and "Default Gateway".

- Obtain an IP Address via DHCP - Prompts device to chose an automatically set IP address (DHCP) rather than a specified IP (user filled-in) address.
- Specify an IP Address - Prompts the device to select the DNS server address entered rather than relying on the network to automatically assign one.

Name (Domain) Servers Tab - DNS assignment, if DHCP is enabled




The screenshot shows the same "PC Card Network Settings" dialog box, but with the "Name Server" tab selected. It contains four text input fields labeled "Primary DNS", "Secondary DNS", "Primary WINS", and "Secondary WINS".

- Primary/Secondary DNS - Allows you to enter DNS preferences.
- Primary/Secondary WINS - Allows you to enter WINS preferences.

NOTE: *If you are not thoroughly familiar with IP and DNS settings, you should avoid making changes here without first seeking assistance from your IT Administrator.*

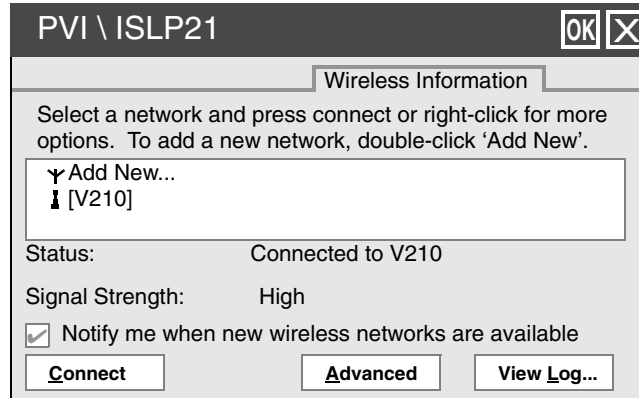
Connection Information

Accessed from the Task Bar by double-tapping the Nethood icon . The PC\ISLP21 information window opens displaying three tabs:

IP Information Tab - Displays current IP settings

IPv6 Information Tab - Displays additional current settings

Wireless Information Tab - Automatic IP address assignment



The Wireless Information tab window lists all Wi-Fi networks available to the *airsync* V210, allowing you to choose a connection. It also allows you to alter and control connections to available networks:

- **Add New** - opens the Wireless Network Properties window allowing you to set up a new network and provides settings for network name, encryption type, and authentication options.
- **Advanced** - Allows you to set a hierarchy of connections in order of preference. Should one connection become unavailable, the device automatically cycles down the list to the next connection on the list.
- **View Log** - opens the Wireless Network Log window which displays the success or failure of the most recent made attempts to connect to available networks.

NOTE: *If you are not thoroughly familiar with network types, you should avoid making changes to your Advanced settings without first seeking assistance from your IT Administrator.*

Resetting the *airsync* V210

Soft Reset

Should your *airsync* Display V210 lock up or fail to respond to the stylus, it may be restarted without turning off the power.

- 1 Locate the reset button on the top of your *airsync*.
- 2 Use the tip of your stylus to press the reset button to restart your *airsync*.

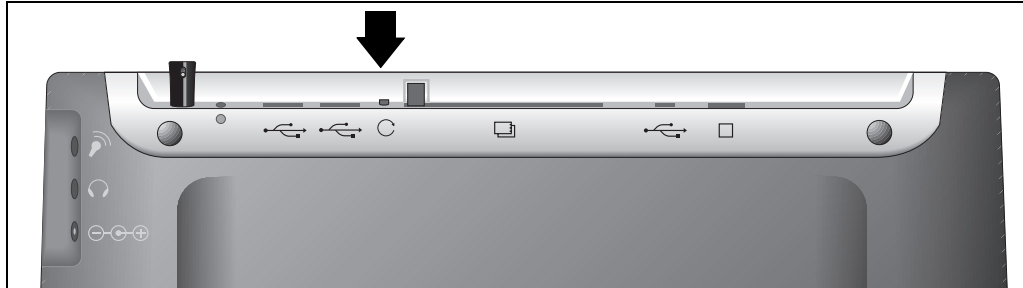


Figure 8: The Soft Reset Button

Hard Reset

A hard reset may be required on rare occasions where your *airsync* Display V210 completely locks up and the soft reset described above does not help.

You can perform a power interrupt type hard reset by detaching the both the battery and the AC power adapter while the device is On.

NOTE: *Soft or Hard resetting will cause you to lose all customization in DRAM (such as files, programs, and settings).*

As a precaution, we recommend that you drag any changed files that you want to protect to the V210's Permanent Storage folder before removing the battery.

Firmware Image Upgrade

From time to time ViewSonic may offer a firmware image upgrade for *airsync* hardware users. For current information visit our web site at or check with your IT Administrator.

PCMCIA Cards

A PCMCIA card can extend the functionality of your V210 by providing added features such as extra storage.

Using a PCMCIA Card



- 1 Insert PCMCIA card carefully into the slot on the top side of the *airsync* until it snaps into place.
- 2 Push the release button before removing.

CAUTION: Make sure the card is oriented correctly before inserting. Do not force the card in or out. It should be easy to insert or remove.

Figure 9: PCMCIA Card

For a list of supported PCMCIA cards, see our web site www.viewsonic.com.

Optional Accessories

The Docking Station

The optional *airpanel* V110/V210 Dock permits easy connectivity to an external mouse, a keyboard, and an AC power source.

The dock offers a USB mini Type B port and two Type A USB ports.

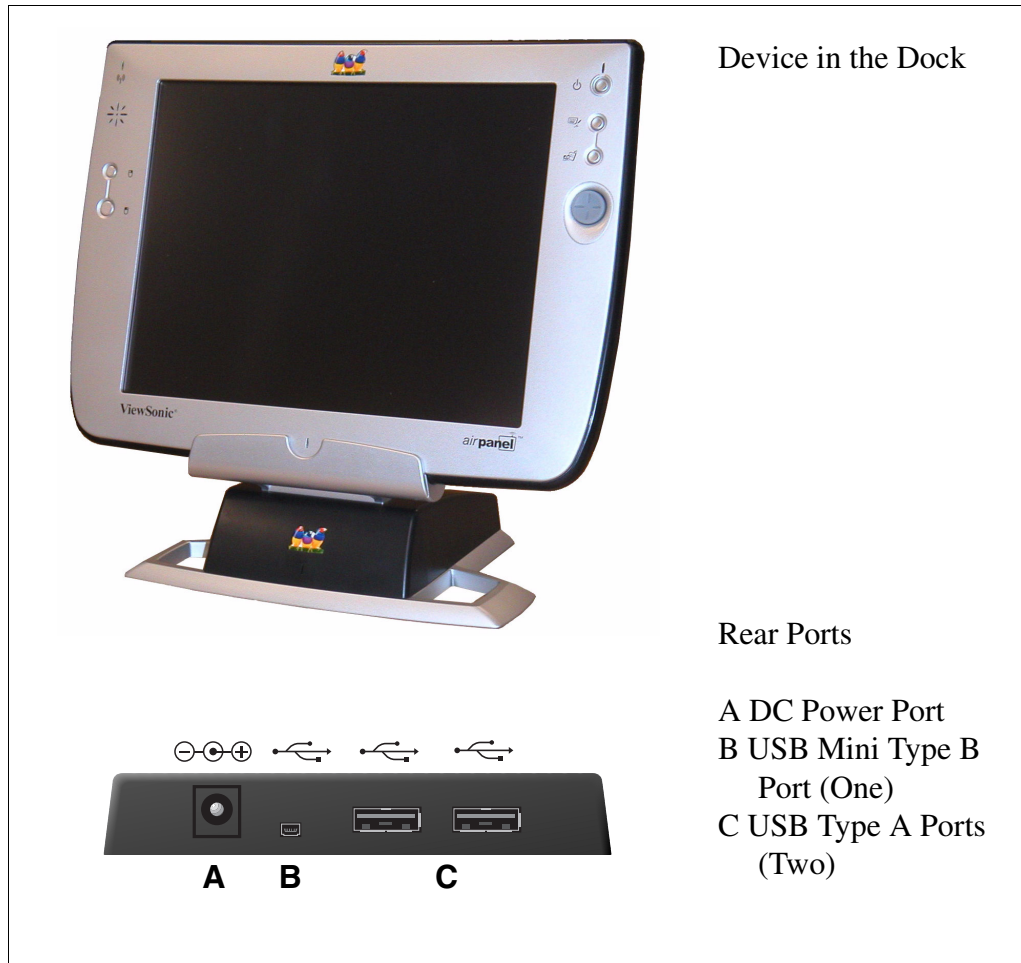


Figure 10: Dock and Ports

NOTE: When mounted in the Dock, the *airsync*'s external USB ports become inactive.

Commercially Available Accessories

External USB Keyboard

You can attach a USB external keyboard using any one of the two USB ports on the top side of the *airsync* Display V210 as indicated by the arrow in the figure below (or by using the optional *airpanel*™ Dock, shown previously).



Figure 11: The USB Keyboard/Mouse Ports

External USB Mouse

An optional external USB mouse can be connected to the keyboard or connected directly into any one of the *airsync* Display V210's two USB type-A ports.

External Headphone Set

You can enhance your audio experience and more fully enjoy music with an audio headset. Plug your headset into the Headset port on the back of the *airsync*.

External Microphone

You can use an external microphone to improve the quality of your voice recordings. Plug your microphone into the Microphone port on the back of the *airsync*.

NOTE: For an up-to-date list of commercially available compatible Modems and Card Readers, please visit <http://www.microsoft.com/windows/Embedded/ce.NET/evaluation/hardware/hcl.asp>.

Appendix

airsync Display V210 Specifications

| | |
|------------------------|---|
| Processor | Intel® 400 MHz XScale PXA255 |
| Memory | RAM: PC 133MHz SDRAM, 128 MB Flash ROM: Intel Strata Flash 64 MB UDI |
| Display | 10.4" TFT Active Matrix SVGA 6-bit LCD Color Display RGB Vertical Stripe, Anti-Glare Screen 800 x 600 Video Resolution |
| Touch Screen | 4-wire Resistive Touch Panel/12 bit A/D |
| Software Base | Microsoft® Windows® CE 4.2 (included) |
| Wireless Standard | IEEE802.11b (Wi-Fi) 2.400-2.4835 GHz, 11/13 channels USA-Canada/Europe Indoor: 50m (164')@11 Mbps, 80m (262')@5.5 Mbps Outdoor: 150m (491')@11 Mbps, 300m (984')@5.5 Mbps |
| Audio Support | Speaker: Mono 1 Watt, 8 ohm 500Hz-16kHz+/- 6db Built-in Microphone: 100-4 kHz, S/N +/-65db (1KHz) |
| Expansion Slot | 1 Type II PCMCIA Card Slot, Hot Insertion/Removal |
| External Ports | 2 Universal Serial Bus (USB) Type A Ports 1 Universal Serial Bus (USB) Mini Type B Port Microphone and Headphone Jacks 22-pin Docking Port Connector VGA Out |
| Battery | Rechargeable Lithium Polymer 4S1P Up to 3 hours life (depending on use and configuration) 2000mAh (fast charging), 14.8V (nominal voltage) |
| AC/DC Power Adapter | 100~240 VAC 50/60 Hz 19 VDC Output Voltage @ 3.16 A |
| Environmental Envelope | Operation: 32° F - 104° (0° C - 40° C), 10% - 85% non-condensing humidity, 0 - 3,000 meters Storage: -4° F - 140° F (-20° C - 60° C), 10% - 85% non-condensing humidity, 0 - 12,000 meters |
| Weight | Net: 1.2 kg (2.64 lbs) |

| | |
|----------------------|---|
| Dimensions | Physical: 292 mm x 213 mm x 25.4 mm (W x H x D) 11.5 in. x 8.4 in. x 1 in. (W x H x D) Package: 357 mm x 286 mm x 161 mm (W x H x D) 14.1 in. x 11.3 in. x 6.3 in. (W x H x D) |
| Standards Compliance | EMC & Safety: c-UL, CE, FCC-B, TUV/Bauart, VCCI, EPA, CB, C-Tick RF Module: FCC/C, EN300328-2, TELEC, iDA, C-Tick |
| Package Contents | <i>In the Package:</i> airsync™ Display V210 Quick Start Guide airsync Display V210 Battery AC/DC Power Adapter with Power Cord Stylus (2) and Stylus Tether (1) USB Mini-B to A Setup Cable (Blue) Mini-VGA Cable (Black) V210 CD (with the User Guide) <i>Basic Software Bundle:</i> Windows CE® 4.2 Internet Explorer Windows Explorer Media Player MS WordPad Solitaire Citrix Client Microsoft ActiveSync Microsoft Inbox Microsoft File Viewers MS Excel Viewer MS Image Viewer MS PDF Viewer MS PowerPoint Viewer MS Word Viewer ViewSonic airsync® Client |

Cleaning and Maintenance

- Make sure the *airsync* Display V210 is turned off.
- Never spray or pour any liquid directly onto the screen or case.
- Never immerse the *airsync* Display V210 in any liquid.

To clean the screen:

- 1** Wipe the screen with a clean, soft, lint-free cloth. This removes dust and other particles.
- 2** If still not clean, apply a small amount of non-ammonia, non-alcohol based glass cleaner onto a clean, soft, lint-free cloth, and wipe the screen.

DISCLAIMER

ViewSonic® does not recommend the use of any ammonia or alcohol-based cleaners on the *airsync* Display V210 screen or case. Some chemical cleaners have been reported to damage the screen and/or case of the *airsync* Display V210. ViewSonic will not be liable for damage resulting from use of any ammonia or alcohol-based cleaners.

Customer Support

For the nearest ViewSonic® service provider, see the table below or contact your reseller.

You will need the product's serial number on-hand when you call.

| Country/ Region | Website | T = Telephone F = FAX | Email |
|----------------------------|----------------|--|------------------------------------|
| United States | viewsonic.com | T: (800) 688-6688 F: (909) 468-1202 | vstech@ viewsonic.com |
| Canada | viewsonic.com | T: (800) 688-6688 F: (909) 468-1202 | service.ca@ viewsonic.com |
| United Kingdom | viewsonic.com | T: 0800 833 648 F: (01794) 500801 | service.eu@ viewsoniceurope.com |

Limited Warranty

The *airpanel*™ Warranty for *airsync*™ Display Products

What the warranty covers:

ViewSonic® warrants its *airpanel* products to be free from defects in material and workmanship during the warranty period. If an *airpanel* product proves to be defective in material or workmanship during the warranty period, ViewSonic will, at its sole option, repair or replace the product with a like product. Replacement product or parts may include remanufactured or refurbished parts or components. ViewSonic provides no warranty for the third party software included with the product. For specific warranty information, please see the EULAs included with the product. ViewSonic does not warrant that software will meet your requirements or that operation of software will be uninterrupted or error free. VIEWSONIC AND ITS SUPPLIERS DISCLAIM ALL WARRANTIES AND CONDITIONS, EITHER EXPRESS OR IMPLIED, INCLUDING, BUT NOT LIMITED TO, IMPLIED WARRANTIES OF MERCHANTABILITY, FITNESS FOR A PARTICULAR PURPOSE, AND NONINFRINGEMENT.

How long the warranty is effective:*

ViewSonic *airpanels* are warranted for one (1) year for all parts (except software) and one (1) year for all labor from the date of the first consumer purchase.

*For European Union: This Limited Warranty is effective in European Union countries for two (2) years for all parts (except software) and for two (2) years for all labor from date of first consumer purchase.

Who the warranty protects:

This warranty is valid only for the first consumer purchaser.

What the warranty does not cover:

1. Software
2. Any product on which the serial number has been defaced, modified or removed.
3. Damage, deterioration or malfunction resulting from:
 - a. Accident, misuse, neglect, fire, water, lightning, or other acts of nature, unauthorized product modification, or failure to follow instructions supplied with the product.
 - b. Repair or attempted repair by anyone not authorized by ViewSonic.
 - c. Damage to or loss of any programs, data or removable storage media.
 - d. Software or data loss occurring during repair or replacement.
 - e. Any damage of the product due to shipment.
 - f. Removal or installation of the product.
 - g. Causes external to the product, such as electrical power fluctuations or failure.
 - h. Use of supplies or parts not meeting ViewSonic's specifications.
 - i. Normal wear and tear.
 - j. Any other cause which does not relate to a product defect.
4. Removal, installation, and set-up service charges.

How to get service:

1. For information about receiving service under warranty, contact ViewSonic Customer Support. You will need to provide your product's serial number.
2. To obtain service under warranty, you will be required to provide (a) the original dated sales slip, (b) your name, (c) your address, (d) a description of the problem, and (e) the serial number of the product.
3. Take or ship the product freight prepaid in the original container to an authorized ViewSonic service center or ViewSonic.
4. For additional information or the name of the nearest ViewSonic service center, contact ViewSonic.

Limitation of implied warranties:

THERE ARE NO WARRANTIES, EXPRESS OR IMPLIED, WHICH EXTEND BEYOND THE DESCRIPTION CONTAINED HEREIN INCLUDING THE IMPLIED WARRANTY OF MERCHANTABILITY AND FITNESS FOR A PARTICULAR PURPOSE.

Exclusion of damages:

VIEWSONIC'S LIABILITY IS LIMITED TO THE COST OF REPAIR OR REPLACEMENT OF THE PRODUCT. VIEWSONIC SHALL NOT BE LIABLE FOR:

1. DAMAGE TO OTHER PROPERTY CAUSED BY ANY DEFECTS IN THE PRODUCT, DAMAGES BASED UPON INCONVENIENCE, LOSS OF USE OF THE PRODUCT, LOSS OF DATA, LOSS OF TIME, LOSS OF PROFITS, LOSS OF BUSINESS OPPORTUNITY, LOSS OF GOODWILL, INTERFERENCE WITH BUSINESS RELATIONSHIPS, OR OTHER COMMERCIAL LOSS, EVEN IF ADVISED OF THE POSSIBILITY OF SUCH DAMAGES.
2. ANY OTHER DAMAGES, WHETHER INCIDENTAL, CONSEQUENTIAL OR OTHERWISE.
3. ANY CLAIM AGAINST THE CUSTOMER BY ANY OTHER PARTY.

Effect of state law:

This warranty gives you specific legal rights, and you may also have other rights which vary from state to state. Some states do not allow limitations on implied warranties and/or do not allow the exclusion of incidental or consequential damages, so the above limitations and exclusions may not apply to you.

Sales outside the U.S.A. and Canada:

For warranty information and service on ViewSonic products sold outside of the U.S.A. and Canada, contact ViewSonic or your local ViewSonic dealer.

ViewSonic *airpanel* Warranty (V2.0)

Release Date: 10-15-01

Safety Guidelines

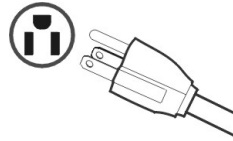
CAUTION: The socket-outlet should be installed near the equipment and be easily accessible.

CAUTION: Use a power cable that is properly grounded. Always use the appropriate AC cord that is certified for the individual country. Some examples are listed below:

| | |
|------------------|--|
| USA..... UL | Switzerland SEV |
| Canada..... CSA | Britain BASE/BS |
| Germany..... VDE | Japan Electric Appliance Control Act |

IMPORTANT NOTICE CONCERNING POWER CORD SELECTION

The power cord set for this unit has been enclosed and has been selected according to the country of destination and must be used to prevent electric shock.



For the United States and Canada

In the United States and Canada the male plug is NEMA5-15 style (shown above), UL Listed, and CSA Labeled. For units which are mounted on a desk or table, type SVT or SJT cord sets may be used. For units which sit on the floor, only SJT type cord sets may be used. The cord set must be selected according to the current rating for your unit. Please consult the table below for the selection criteria for power cords used in the United States and Canada.

| Cord Type | Size of Conductors in Cord | Maximum Current Rating of Unit |
|-----------|----------------------------|--------------------------------|
| SJT | 18 AWG | 10 Amps |
| | 16 AWG | 12 Amps |
| | 14 AWG | 12 Amps |
| SVT | 18 AWG | 10 Amps |
| | 17 AWG | 12 Amps |

For European Countries

In Europe you must use a cord set which is appropriate for the receptacles in your country. The cord set is HAR-Certified, and a special mark that will appear on the outer sheath, or on the insulation of one of the inner conductors.

AC PLUG CORD PRECAUTIONS FOR THE UNITED KINGDOM

FOR YOUR SAFETY PLEASE READ THE FOLLOWING TEXT CAREFULLY.

IF THE FITTED MOULDED PLUG IS UNSUITABLE FOR THE SOCKET OUTLET THEN THE PLUG SHOULD BE CUT OFF AND DISPOSED OF SAFELY.

THERE IS A DANGER OF SEVERE ELECTRICAL SHOCK IF THE CUT OFF PLUG IS INSERTED INTO AN APPROPRIATE SOCKET.

If a new plug is to be fitted, please observe the wiring code as shown below.

If in any doubt, please consult a qualified electrician.

WARNING: THIS APPLIANCE MUST BE EARTHED.

IMPORTANT: The wires in this mains lead are coloured in accordance with the following code:

Green-and-Yellow: Earth
 Blue: Neutral
 Brown: Live

If the coloured wires of the mains lead of this appliance do not correspond with the coloured markings identifying the terminals in your plug, proceed as follows:

The wire which is coloured GREEN-AND-YELLOW must be connected to the terminal in the plug which is marked by the letter E or by the Earth symbol or coloured GREEN or GREEN-AND-YELLOW.

The wire which is coloured BLUE must be connected to the terminal in the plug which is marked with the letter N or coloured BLACK. The wire which is coloured BROWN must be connected to the terminal in the plug which is marked with the letter L or coloured RED.

If you have any questions concerning which proper power cord to use, please consult with the dealer from whom you have purchased the product.

Compliance and Safety Notices

Radio Frequency Interference (RFI) Compliance

United States Compliance Notice

This equipment has been tested and found to comply with the limits for a Class B digital device, pursuant to Part 15 of the Federal Communications Commission (FCC) Rules. These limits are designed to provide reasonable protection against harmful interference in a residential installation. This equipment generates, uses, and can radiate radio frequency energy and, if not installed and used in accordance with the instructions, may cause harmful interference to radio communications. However, there is no guarantee that interference will not occur in a particular installation. If this equipment does cause harmful interference to radio or television reception, which can be determined by turning the equipment off and on, the user is encouraged to try to correct the interference by one or more of the following measures:

- Reorient or relocate the receiving antenna.
- Increase the separation between the equipment and the receiver.
- Connect the equipment into an outlet on a circuit different from that to which the receiver is connected.
- Consult the dealer or an experienced radio or television technician for help.

CAUTION: The Part 15 radio device operates on a non-interference basis with other devices operating at its frequency. Any changes or modification to said product not expressly approved could void the user's authority to operate this device.

Proper operation of this radio according to the instructions found in this user's guide will result in user exposure that is substantially below the FCC recommended limits.

- Do not touch or move antenna while the unit is transmitting or receiving.
- Do not hold any component containing the radio such that the antenna is very close or touching any exposed parts of the body, especially the face or eyes, while transmitting.
- Do not operate a portable transmitter near unshielded blasting caps or in an explosive environment unless it is a type especially qualified for such use.
- Do not operate the radio or attempt to transmit data unless the antenna is connected: if not, the radio may be damaged.

WARNING FOR LAPTOP USERS: In order to comply with the FCC RF exposure limits, it is recommended, when using a laptop with a wireless Ethernet adapter, that the adapter's integrated antenna should not be positioned closer than 1.5cm from the user. It is recommended that user exposure time be limited.

Canadian Compliance Notice

English - This digital apparatus does not exceed the Canada ICES-003 Class B limits for radio noise emissions from digital apparatus as set out in the radio interference regulations of the Canadian Department of Communications.

French - Le present appareil numerique nemet pas de bruits radioelectriques depassant les limites applicables aux appareils numeriques de Canada ICES-003 Class B prescrites dans le reglement sur le brouillage radioelectrique edicte par le Ministere des Communications du Canada.

European Compliance Notice

Products with the CE Marking comply with both the EMC Directive (89/336/EEC) and the Low Voltage Directive (73/23/EEC) issued by the Commission of the European Community.



Compliance with these directives implies conformity to the following European Norms:

- EN55022 (CISPR 22) Radio Frequency Interference
- EN55024 (IEC61000-4-2, -4-4, -4-5, -4-6, -4-11)
- EN60950 (IEC950) Product Safety

Japanese Compliance Notice

This is a Class B product based on the standard of the Voluntary Control Council for Interference from information Technology Equipment (VCCI). If this is used near a radio or television receiver in a domestic environment, it might cause radio interference. Install and use the equipment according to the instruction manual.

“To prevent radio interference to the licensed service, this device is intended to be operated indoors and away from windows to provide maximum shielding. Equipment (or its transmit antenna) that is installed outdoors is subject to licensing.”

“Operation is subject to the following two conditions: (1) this device may not cause interference, and (2) this device must accept any interference, including interference that may cause undesired operation of the device.”

The term “IC:” before the certification/registration number only signifies that the Industry Canada technical specifications were met.

Safety Notices

Battery Safety Notice

- The battery pack is intended for use only with this device.
- Do not disassemble the pack.
- Do not dispose of the battery pack in fire or water.
- To avoid risk of fire, burns, or damage to your battery pack, do not allow a metal object to touch the battery contacts.
- Handle a damaged or leaking battery with extreme care. If you come in contact with the electrolyte, wash the exposed area with soap and water. If it contacts the eye, flush the eye with water for 15 minutes and seek medical attention.
- Do not charge the battery pack if the ambient temperature exceeds 104 degrees Fahrenheit (40 degrees Celsius).
- To obtain a replacement battery, contact your local dealer.
- Do not expose the battery pack to high storage temperatures (above 140 degrees Fahrenheit, 60 degrees Celsius).
- When discarding a battery pack, contact your local waste disposal provider regarding local restrictions on the disposal or recycling of batteries.

Lithium Battery Warning

This system contains a lithium polymer battery to power the clock and calendar circuitry.

There is a danger of explosion if the battery is replaced incorrectly. Replace only with the same or equivalent type battery as recommended by the manufacturer. Discard used batteries according to the manufacturer's instructions or local laws.

Power Supply Safety Notice

The power supply provided with this device is for use with this device only. Replace only with the same or equivalent type power supply as recommended by the manufacturer.

Infrared LED Safety Notice

If this device contains an infrared networking or peripheral connection capability, or if one is added to the device, the following precautions are recommended:

- Do not attempt to view the infrared LED beam with any type of optical device.
- Do not attempt to make any adjustment of the unit.
- If the unit requires service, contact an authorized service center.
- Avoid direct eye exposure to the infrared LED beam. Be aware that the beam is invisible light that cannot be seen.

ViewSonic Corporation