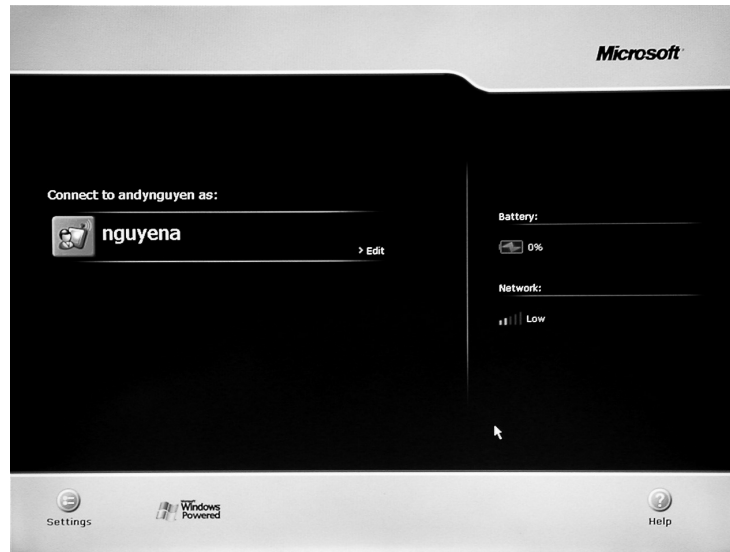


## airpanel Settings

User guides and instructions for the Microsoft Windows for Smart Display software and Windows CE. Net are included on the *airpanel* V110 Utility CD-ROM.

### Device Settings



The *airpanel* V110 desktop provides these useful features:

- A Battery Charge Status Icon
- A Network Selection Option
- A Help Button
- A Settings Button

Tapping the Settings button opens the Settings window which features tabs for establishing device settings in these functional areas:

- General Settings
- Wireless Network Settings
- Advanced Settings
- Power Settings
- System Info Settings

### **General Settings**



**Figure 13: The General Settings Panel**

Allows you to alter and control the operator usage environment:

- Sound - Sets sound volume to Loud, Soft, or Off for the *airpanel*. Allows the home PC to send sound to the *airpanel*, keep sound on the home PC, or to mute sound on the home PC.
- Stylus - Sets the stylus' Double-tap rate and allows you to calibrate the alignment of stylus taps to the screen. This later feature can be useful when the screen fails to respond accurately to the stylus.
- New Connection - For advanced users only. Allows you to create a new network connection.
- Wallpaper - Toggles the computer's wallpaper On/Off. (Wallpaper On can slow performance.)

### **Adding a New User to a Home PC**

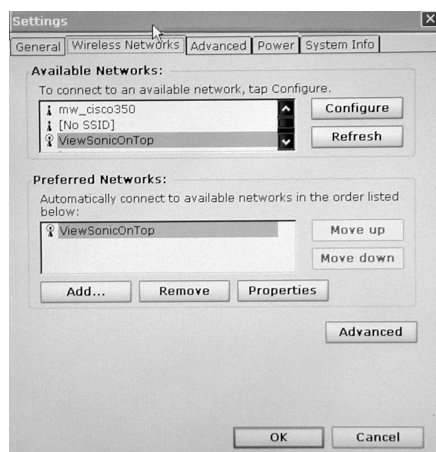
Your *airpanel* Wireless Monitor can have more than one user with access linked to your Home PC. For instance, you and your spouse can have individual links to your Home PC. Each added user link will have its own login icon on the desktop and its own individual password.

The preferred way to add a new user to the *airpanel* Wireless Monitor is by running the Microsoft Mira CD on the Home PC then following the simple directions. The help files for Microsoft Windows XP are also an excellent background resource.

For the advanced user, to add a new user from the General settings panel:

- 1** Click the New button under New Connection
- 2** Enter the User Name and Computer Name in the New Connection window
- 3** Select a password option
- 4** Select a launch option under Default Connection, then click OK.

## Wireless Network Settings



**Figure 14: The Wireless Network Settings Panel**

Allows the user to alter and control connections to another device:

- Available Networks - Lists all networks available to the *airpanel* allowing you to choose a connection.
- Preferred Networks - Allows you to automatically connect to a network from a list of preferred networks.

### Adding a New Home PC

Your *airpanel* Wireless Monitor can have links to more than one Home PC. For instance, the *airpanel* can be linked to a your personal Home PC when you are at home and to your work Home PC when you are in the office. Each additional Home PC link will have its own connection title in the Wireless Network settings panel for you to choose from.

The preferred way to add a new Home PC to the *airpanel* Wireless Monitor is by running the Microsoft CD on the Home PC then following the simple directions. The help files for Microsoft Windows XP are also an excellent background resource.

For the advanced user, to add an available peer-to-peer Home PC from the Wireless Networks panel:

- 1 Select the Home PC to be added from the list under Available Networks
- 2 Tap Configure to give a name to the new connection, then click OK.
- 3 Assign a default priority to the new connection under Preferred Networks then click OK.

### The Advanced Button's Wireless Network Settings Terminology

The Advanced button allows the user to set these Networks to Access connection options:

- Computer-to-Computer (Ad Hoc) Networks Only - this means limiting access to PCs with their own built-in wireless cards or attached external wireless adapters. This is also referred to as a peer-to-peer type connection.
- Access Point (Infrastructure) Networks Only - this means limiting access to networks with a wireless adapter attached to the network rather than attached to a particular PC. After selecting such a network, you will need to specify a particular PC on the network to complete the connection.
- Any Available Network (Access Point Preferred) - this means access is not limited to a particular type of wireless network.

**NOTE:** *If you are not thoroughly familiar with network types, you should avoid making changes to the Advanced settings without first seeking assistance from the Microsoft Windows XP Help Files*

### Advanced Settings

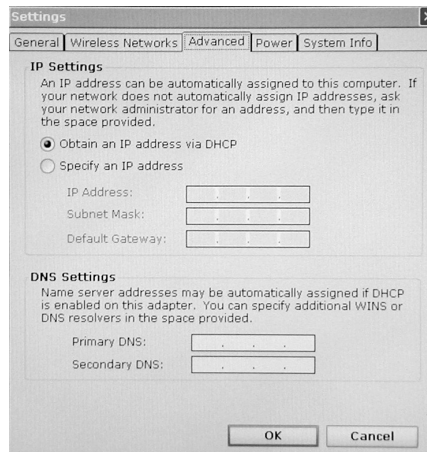


Figure 15: The Advanced Settings Panel

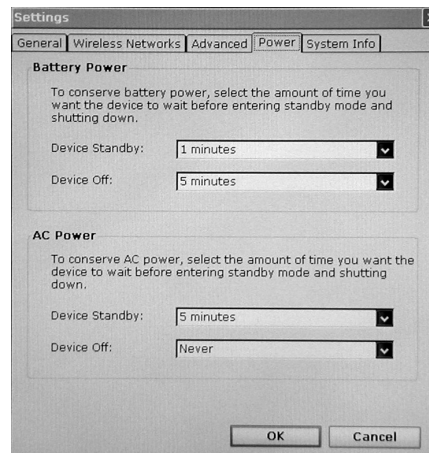
Allows the **advanced** user to control advanced settings. The options available on the Advanced tab should be attempted only by an advanced user and should be **avoided** by the novice. The advanced features include:

- IP Settings - Allows the user to choose between an automatically set IP address (DHCP) or a specified IP (user filled-in) address.

- DNS Settings - Allows the user to write in a specific server address for assignment to a particular server.

**NOTE:** *If you are not thoroughly familiar with IP and DNS settings, you should avoid making changes to the Advanced settings without first seeking assistance from the Microsoft Windows XP Help Files.*

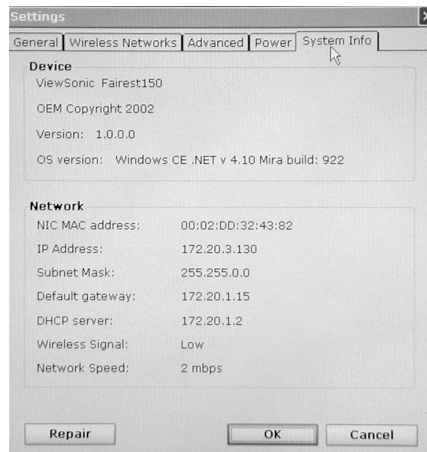
### **Power Settings**



**Figure 16: The Power Settings Panel**

- Battery Power - Allows you to set the time you want the **airpanel** to wait before entering Standby mode and Shutdown mode in order to save battery power.
- AC Power - Allows you to set the time you want the **airpanel** to wait before entering Standby mode and Shutdown mode in order to save AC power. (Useful in conjunction with Uninterruptable Power Supplies or to prolong the life of the device.)

## System Info Settings



**Figure 17: The System Information Panel**

These settings can be useful for analytical purposes or for when dealing with customer service:

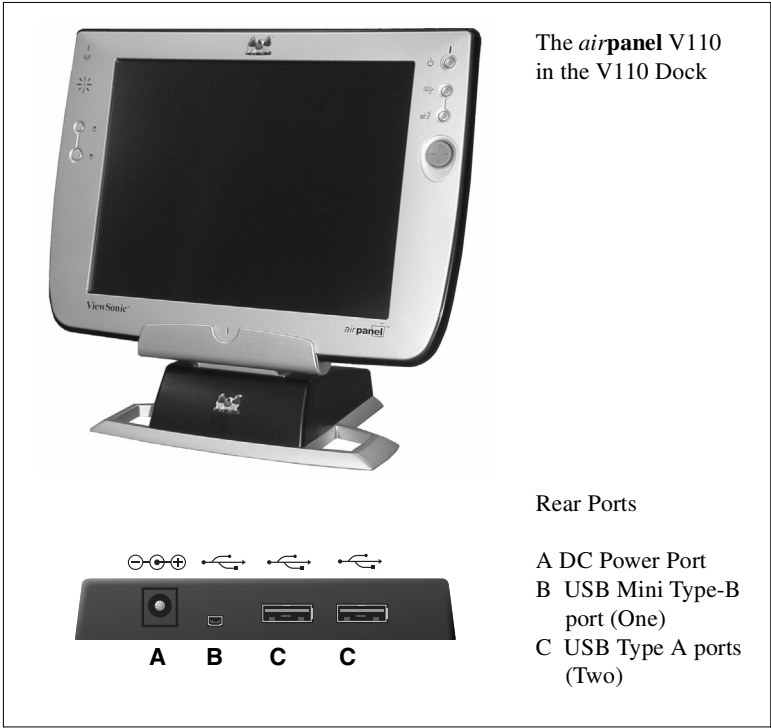
- Device - Allows the user to review (but not alter) the device settings for device name, copyright, firmware version, installed OS version, and build.
- Network - Allows the user to review (but not alter) NIC MAC address, IP Address, Subnet Mask, Default Gateway, and the assigned DHCP Server setting. The Wireless Signal indicator will confirm the success or failure of your network connection. The Network Speed indicator will confirm the current data transfer rate setting.

# Optional Accessories

## The ViewSonic *airpanel* V110 Dock

The optional *airpanel* V110 Dock permits easy connectivity to an external mouse, a keyboard, and an AC power source.

The dock offers a USB mini type-B port and two Type A USB ports.



**Figure 18: Dock and Ports**

NOTE: When mounted in the Dock, the *airpanel*'s external USB ports become inactive.

## Commercially Available Options

### External USB Keyboard

You can attach a USB external keyboard using any one of the two USB ports on the top side of the *airpanel* V110 Wireless Monitor as indicated by the arrow in the figure below (or by using the optional *airpanel*™ Dock, shown previously) .



**Figure 19: The External Keyboard/Mouse USB Ports**

### External USB Mouse

An optional external USB mouse can be connected to the keyboard or connected directly into any one of the *airpanel* V110's two USB type-A ports.

### External Headphone Set

You can enhance your audio experience and more fully enjoy music and games with an audio headset. Plug plug your headset into the Headset port on the back of the *airpanel*.

### External Microphone

You can use an external microphone to improve the quality of your voice recordings. Plug your microphone into the Microphone port on the back of the *airpanel*.



# Appendix

## *airpanel* V110 Specifications

<i>airpanel</i> <sup>™</sup> Processor	Intel® X-Scale 400 MHz 256 uBGA Package
Companion Chip	Intel StrongARM SA-1111 256-uBGA Package Integrated Audio, PC Card Interface, USB Host Controller, and CF Controller
Flash ROM	32 MB
Memory (RAM)	SDRAM 128 MB
Graphics	Media-Q MQ200 Graphics Chip - Silicon Motor 2 MB Embedded Memory 128-bit 2D Graphics
Video Resolution Built-in LCD Display	800 x 600 @ 60 Hz (Native), 60 Hz
Video Resolution External Display	640 x 480 @ 60 Hz, 75 Hz, 85 Hz 800 x 600 @ 60 Hz, 75 Hz, 85 Hz 1024 x 768 @ 60 Hz, 75 Hz, 85 Hz
Display	High Luminance TFT LCD Display 10" screen RGB Vertical Stripe
Touch Panel	4-wire Resistive Touch Screen
Expansion	1 Type II PC Card Slot (PCMCIA v2.1) 1 CompactFlash Type II Slot
Audio	18bit A/D Stereo 48 KHz Sampling Rate Built-in Mic and Speaker
System Ports	1 Universal Serial Bus (USB) Port Microphone and Headphone Jacks Infrared USB Sync/Cradle 16-pin Connector

Battery	Rechargeable 1800 mAh lithium ion Battery Pack Fast Charging (2 hours Fast Charge Mode – Deep Suspend) Internal rechargeable backup battery
Battery Life	Up to 4 hours (depending on use and configuration)
AC/DC Adapter	90~264 VAC 50/60 Hz 19.5 VDC Output Voltage 2.0A 40W Power Output
Dimensions	287.7 mm x 212.8 mm x 23 mm (W x L x D) 11.3 in. x 8.4 in. x 0.9 in. (W x L x D)
Weight	1.1 kg 2.5 lbs.
Package Contents	<i>airpanel</i> <sup>™</sup> V110 ViewSonic AirSync Wi-Fi USB Wireless Adapter Quick Start Guide <i>airpanel</i> V110 battery AC/DC power adapter with Power Cord USB Setup Cable Stylus (2) Stylus Tether <i>airpanel</i> V110 Utility CD-ROM which includes User Guide and installation software
Compliance	UL, cUL, FCC-B, CCIB, CCEE, VCCI
Included Software	Windows CE .NET <sup>®</sup> Operating System

**Action Item 7:** *Update specifications as info becomes available.*

## Customer Support

For the nearest ViewSonic® service provider, see the table below or contact your reseller.

You will need the product's serial number on-hand when you call.

Country/ Region	Website	T = Telephone F = FAX	Email
United States	VSMobile.com/ support	T: (800) 688-6688 F: (909) 468-1202	VSMobile@ viewsonic.com
Canada	viewsonic.com/ support	T: (800) 688-6688 F: (909) 468-1202	service.ca@ viewsonic.com
United Kingdom	VSMobile.com/ support	T: 0800 833 648 F: (01794) 500801	service.eu@ viewsoniceurope.com
Europe, Middle East, Baltic countries, and North Africa	viewsoniceurope.com	Contact your reseller	service.eu@ viewsoniceurope.com
Australia and New Zealand	viewsonic.com.au	T: +61 2 9929 3955 F: +61 2 9929 8393	service.au@ viewsonic.com
Singapore/ Southeast Asia	viewsonic.com.sg	T: 65 2734018 F: 65 2731566	service.sg@ viewsonic.com
Other Asia/Pacific countries and Indian Peninsula	viewsonic.com.tw	T: 886 2 2246 3456 F: 886 2 8242 3668	service.ap@ viewsonic.com
South Africa	viewsonic.com/asia	T: 886 2 2246 3456 F: 886 2 8242 3668	service.ap@ viewsonic.com

**Action Item 8:** Review Customer support, update as needed.

## Cleaning and Maintenance

- Make sure the *airpanel* V110 Wireless Monitor is turned off.
- Never spray or pour any liquid directly onto the screen or case.
- Never immerse the *airpanel* V110 in any liquid.

### **To clean the screen:**

- 1** Wipe the screen with a clean, soft, lint-free cloth. This removes dust and other particles.
- 2** If still not clean, apply a small amount of non-ammonia, non-alcohol based glass cleaner onto a clean, soft, lint-free cloth, and wipe the screen.

### **To clean the case:**

- 1** Use a soft, dry cloth.
- 2** If still not clean, apply a small amount of a non-ammonia, non-alcohol based, mild non-abrasive detergent onto a clean, soft, lint-free cloth, then wipe the surface.

### **DISCLAIMER**

ViewSonic® does not recommend the use of any ammonia or alcohol-based cleaners on the *airpanel* V110 screen or case. Some chemical cleaners have been reported to damage the screen and/or case of the *airpanel* V110. ViewSonic will not be liable for damage resulting from use of any ammonia or alcohol-based cleaners.

## Limited Warranty

### *airpanel*<sup>TM</sup> Products

#### What the warranty covers:

ViewSonic<sup>®</sup> warrants its *airpanel* products to be free from defects in material and workmanship during the warranty period. If an *airpanel* product proves to be defective in material or workmanship during the warranty period, ViewSonic will, at its sole option, repair or replace the product with a like product. Replacement product or parts may include remanufactured or refurbished parts or components. ViewSonic provides no warranty for the third party software included with the product. For specific warranty information, please see the EULAs included with the product. ViewSonic does not warrant that software will meet your requirements or that operation of software will be uninterrupted or error free. VIEWSONIC AND ITS SUPPLIERS DISCLAIM ALL WARRANTIES AND CONDITIONS, EITHER EXPRESS OR IMPLIED, INCLUDING, BUT NOT LIMITED TO, IMPLIED WARRANTIES OF MERCHANTABILITY, FITNESS FOR A PARTICULAR PURPOSE, AND NON-INFRINGEMENT.

#### How long the warranty is effective:\*

ViewSonic *airpanels* are warranted for one (1) year for all parts (except software) and one (1) year for all labor from the date of the first consumer purchase.

\*For European Union: This Limited Warranty is effective in European Union countries for two (2) years for all parts (except software) and for two (2) years for all labor from date of first consumer purchase.

#### Who the warranty protects:

This warranty is valid only for the first consumer purchaser.

#### What the warranty does not cover:

1. Software
2. Any product on which the serial number has been defaced, modified or removed.
3. Damage, deterioration or malfunction resulting from:
  - a. Accident, misuse, neglect, fire, water, lightning, or other acts of nature, unauthorized product modification, or failure to follow instructions supplied with the product.
  - b. Repair or attempted repair by anyone not authorized by ViewSonic.
  - c. Damage to or loss of any programs, data or removable storage media.
  - d. Software or data loss occurring during repair or replacement.
  - e. Any damage of the product due to shipment.
  - f. Removal or installation of the product.
  - g. Causes external to the product, such as electrical power fluctuations or failure.
  - h. Use of supplies or parts not meeting ViewSonic's specifications.
  - i. Normal wear and tear.
  - j. Any other cause which does not relate to a product defect.
4. Removal, installation, and set-up service charges.

#### How to get service:

1. For information about receiving service under warranty, contact ViewSonic Customer Support. You will need to provide your product's serial number.
2. To obtain service under warranty, you will be required to provide (a) the original dated sales slip, (b) your name, (c) your address, (d) a description of the problem, and (e) the serial number of the product.
3. Take or ship the product freight prepaid in the original container to an authorized ViewSonic service center or ViewSonic.
4. For additional information or the name of the nearest ViewSonic service center, contact ViewSonic.

#### Limitation of implied warranties:

THERE ARE NO WARRANTIES, EXPRESS OR IMPLIED, WHICH EXTEND BEYOND THE DESCRIPTION CONTAINED HEREIN INCLUDING THE IMPLIED WARRANTY OF MERCHANTABILITY AND FITNESS FOR A PARTICULAR PURPOSE.

#### Exclusion of damages:

VIEWSONIC'S LIABILITY IS LIMITED TO THE COST OF REPAIR OR REPLACEMENT OF THE PRODUCT. VIEWSONIC SHALL NOT BE LIABLE FOR:

1. DAMAGE TO OTHER PROPERTY CAUSED BY ANY DEFECTS IN THE PRODUCT, DAMAGES BASED UPON INCONVENIENCE, LOSS OF USE OF THE PRODUCT, LOSS OF DATA, LOSS OF TIME, LOSS OF PROFITS, LOSS OF BUSINESS OPPORTUNITY, LOSS OF GOODWILL, INTERFERENCE WITH BUSINESS RELATIONSHIPS, OR OTHER COMMERCIAL LOSS, EVEN IF ADVISED OF THE POSSIBILITY OF SUCH DAMAGES.
2. ANY OTHER DAMAGES, WHETHER INCIDENTAL, CONSEQUENTIAL OR OTHERWISE.
3. ANY CLAIM AGAINST THE CUSTOMER BY ANY OTHER PARTY.

#### Effect of state law:

This warranty gives you specific legal rights, and you may also have other rights which vary from state to state. Some states do not allow limitations on implied warranties and/or do not allow the exclusion of incidental or consequential damages, so the above limitations and exclusions may not apply to you.

#### Sales outside the U.S.A. and Canada:

For warranty information and service on ViewSonic products sold outside of the U.S.A. and Canada, contact ViewSonic or your local ViewSonic dealer.

ViewSonic *airpanel* Warranty (V2.0)

Release Date: 10-15-01

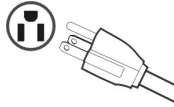
# Safety Guidelines

**CAUTION:** The socket-outlet should be installed near the equipment and be easily accessible.  
**CAUTION:** Use a power cable that is properly grounded. Always use the appropriate AC cord that is certified for the individual country. Some examples are listed below:

USA.....UL	Switzerland .... SEV
Canada.....CSA	Britain ..... BASE/BS
Germany.....VDE	Japan ..... Electric Appliance Control Act

### IMPORTANT NOTICE CONCERNING POWER CORD SELECTION

The power cord set for this unit has been enclosed and has been selected according to the country of destination and must be used to prevent electric shock.



### For the United States and Canada

In the United States and Canada the male plug is NEMA5-15 style (shown above), UL Listed, and CSA Labeled. For units which are mounted on a desk or table, type SVT or SJT cord sets may be used. For units which sit on the floor, only SJT type cord sets may be used. The cord set must be selected according to the current rating for your unit. Please consult the table below for the selection criteria for power cords used in the United States and Canada.

Cord Type	Size of Conductors in Cord	Maximum Current Rating of Unit
SJT	18 AWG	10 Amps
	16 AWG	12 Amps
	14 AWG	12 Amps
SVT	18 AWG	10 Amps
	17 AWG	12 Amps

### For European Countries

In Europe you must use a cord set which is appropriate for the receptacles in your country. The cord set is HAR-Certified, and a special mark that will appear on the outer sheath, or on the insulation of one of the inner conductors.

### AC PLUG CORD PRECAUTIONS FOR THE UNITED KINGDOM

FOR YOUR SAFETY PLEASE READ THE FOLLOWING TEXT CAREFULLY.

IF THE FITTED MOULDED PLUG IS UNSUITABLE FOR THE SOCKET OUTLET THEN THE PLUG SHOULD BE CUT OFF AND DISPOSED OF SAFELY.

THERE IS A DANGER OF SEVERE ELECTRICAL SHOCK IF THE CUT OFF PLUG IS INSERTED INTO AN APPROPRIATE SOCKET.

If a new plug is to be fitted, please observe the wiring code as shown below.

If in any doubt, please consult a qualified electrician.

**WARNING: THIS APPLIANCE MUST BE EARTHED.**

**IMPORTANT:** The wires in this mains lead are coloured in accordance with the following code:

- Green-and-Yellow: Earth
- Blue: Neutral
- Brown: Live

If the coloured wires of the mains lead of this appliance do not correspond with the coloured markings identifying the terminals in your plug, proceed as follows:

The wire which is coloured GREEN-AND-YELLOW must be connected to the terminal in the plug which is marked by the letter E or by the Earth symbol or coloured GREEN or GREEN-AND-YELLOW.

The wire which is coloured BLUE must be connected to the terminal in the plug which is marked with the letter N or coloured BLACK. The wire which is coloured BROWN must be connected to the terminal in the plug which is marked with the letter L or coloured RED.

If you have any questions concerning which proper power cord to use, please consult with the dealer from whom you have purchased the product.

# Compliance and Safety Notices

## Radio Frequency Interference (RFI) Compliance

### ***United States Compliance Notice***

This equipment has been tested and found to comply with the limits for a Class B digital device, pursuant to Part 15 of the Federal Communications Commission (FCC) Rules. These limits are designed to provide reasonable protection against harmful interference in a residential installation. This equipment generates, uses, and can radiate radio frequency energy and, if not installed and used in accordance with the instructions, may cause harmful interference to radio communications. However, there is no guarantee that interference will not occur in a particular installation. If this equipment does cause harmful interference to radio or television reception, which can be determined by turning the equipment off and on, the user is encouraged to try to correct the interference by one or more of the following measures:

- Reorient or relocate the receiving antenna.
- Increase the separation between the equipment and the receiver.
- Connect the equipment into an outlet on a circuit different from that to which the receiver is connected.
- Consult the dealer or an experienced radio or television technician for help.

### ***Canadian Compliance Notice***

**English** - This digital apparatus does not exceed the Canada ICES-003 Class B limits for radio noise emissions from digital apparatus as set out in the radio interference regulations of the Canadian Department of Communications.

**French** - Le present appareil numerique nemet pas de bruits radioelectriques depassant les limites applicables aux appareils numeriques de Canada ICES-003 Class B prescrites dans le reglement sur le brouillage radioelectrique edicte par le Ministere des Communications du Canada.

### ***European Compliance Notice***

Products with the CE Marking comply with both the EMC Directive (89/336 /EEC) and the Low Voltage Directive (73/23/EEC) issued by the Commission of the European Community.



Compliance with these directives implies conformity to the following European Norms:

- EN55022 (CISPR 22) Radio Frequency Interference
- EN55024 (CISPR 24) Immunity Characteristics
- EN60950 (IEC950) Product Safety
- ETSI EN 300 328
- ETSI EN 301 489-1/-17

### ***Japanese Compliance Notice***

This is a Class B product based on the standard of the Voluntary Control Council for Interference from information Technology Equipment (VCCI). If this is used near a radio or television receiver in a domestic environment, it might cause radio interference. Install and use the equipment according to the instruction manual.



## **Safety Notices**

### ***Battery Safety Notice***

- The battery pack is intended for use only with this device.
- Do not disassemble the pack.
- Do not dispose of the battery pack in fire or water.
- To avoid risk of fire, burns, or damage to your battery pack, do not allow a metal object to touch the battery contacts.
- Handle a damaged or leaking battery with extreme care. If you come in contact with the electrolyte, wash the exposed area with soap and water. If it contacts the eye, flush the eye with water for 15 minutes and seek medical attention.
- Do not charge the battery pack if the ambient temperature exceeds 113 degrees Fahrenheit (45 degrees Celsius).
- To obtain a replacement battery, contact your local dealer.
- Do not expose the battery pack to high storage temperatures (above 140 degrees Fahrenheit, 60 degrees Celsius).
- When discarding a battery pack, contact your local waste disposal provider regarding local restrictions on the disposal or recycling of batteries.

### **Lithium Battery Warning**

This computer contains a lithium battery to power the clock and calendar circuitry.

There is a danger of explosion if the battery is replaced incorrectly. Replace only with the same or equivalent type battery as recommended by the manufacturer. Discard used batteries according to the manufacturer's instructions or local laws.

### ***Power Supply Safety Notice***

The power supply provided with this device is for use with this device only. Replace only with the same or equivalent type power supply as recommended by the manufacturer.

***Infrared LED Safety Notice***

If this device contains an infrared networking or peripheral connection capability, or if one is added to the device, the following precautions are recommended:

- Do not attempt to view the infrared LED beam with any type of optical device.
- Do not attempt to make any adjustment of the unit.
- If the unit requires service, contact an authorized service center.
- Avoid direct eye exposure to the infrared LED beam. Be aware that the beam is invisible light that cannot be seen.

### **Federal Communications Commission (FCC) Statement**

You are cautioned that changes or modifications not expressly approved by the part responsible for compliance could void the user's authority to operate the equipment.

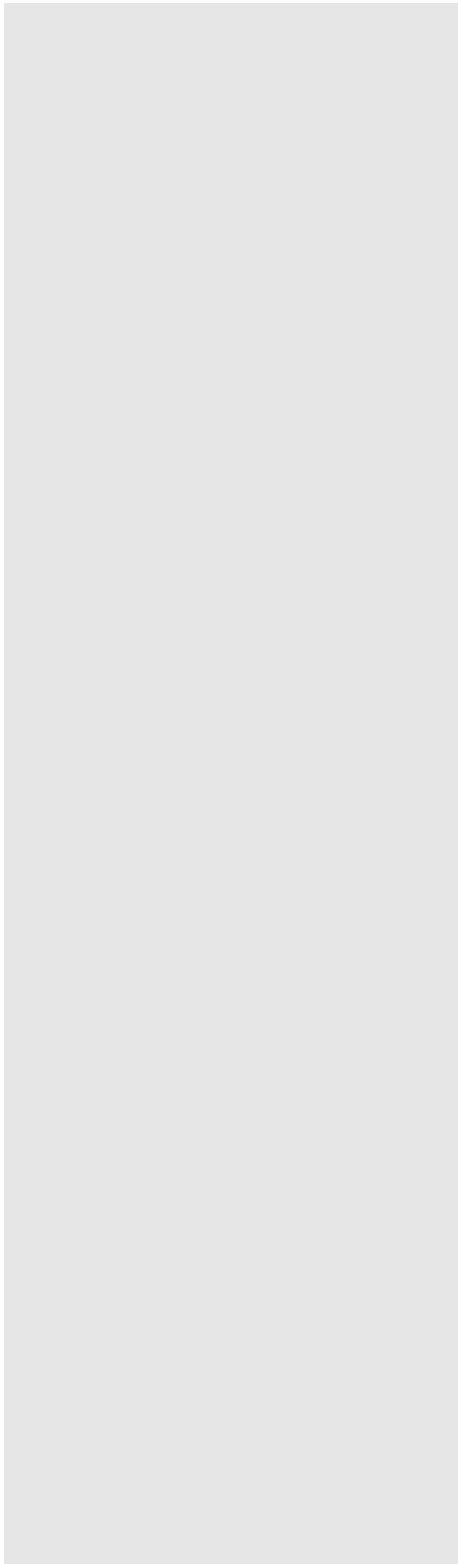
This equipment has been tested and found to comply with the limits for a Class B digital device, pursuant to part 15 of the FCC rules. These limits are designed to provide reasonable protection against harmful interference in a residential installation. This equipment generates, uses and can radiate radio frequency energy and, if not installed and used in accordance with the instructions, may cause harmful interference to radio communications. However, there is no guarantee that interference will not occur in a particular installation. If this equipment does cause harmful interference to radio or television reception, which can be determined by turning the equipment off and on, the user is encouraged to try to correct the interference by one or more of the following measures:

- Reorient or relocate the receiving antenna.
- Increase the separation between the equipment and receiver.
- Connect the equipment into an outlet on a circuit different from that to which the receiver is connected.
- Consult the dealer or an experienced radio/TV technician for help.

You are cautioned that changes or modifications not expressly approved by the party responsible for compliance could void your authority to operate the equipment.

### **FCC RF Radiation Exposure Statement:**

This Transmitter must not be co-located or operating in conjunction with any other antenna or transmitter.



**ViewSonic Corporation**