

# ViewSonic®

## **Airsync N210 Media Station**



*Stand-alone video process box*

## **NexTVision N210 Video Process Box**

User Guide

Guide de l'utilisateur

Bedienungsanleitung

Guía del usuario

Guida dell'utente

Guia do Usuário

Användarhandbok

Käyttöopas

Руководство пользователя

ユ－ザ－ズ ガイ ド

使用手冊

使用手冊

사용자 안내서

# Contents

<b>Introduction</b> .....	<b>3</b>
Key Features .....	3
Package Contents .....	3
Precautions.....	3
Precautions.....	4
<b>Start Your Installation</b> .....	<b>5</b>
Connecting the NexTVision N210.....	5
Connector Descriptions .....	5
Power On.....	6
Control Button Descriptions .....	6
<b>Getting Started</b> .....	<b>7</b>
Wireless connection .....	7
Taskman .....	8
Program.....	11
<b>Settings</b> .....	<b>14</b>
The Accessibility Control Panel .....	14
The Certificates Control Panel.....	17
The Date/Time Control Panel .....	18
The Display Control Panel.....	18
The Internet Options Control Panel .....	19
The Keyboard Control Panel .....	20
The Mouse Control Panel.....	21
The JETCET PRINT Pro Control Panel .....	21
The Management Tools Control Panel.....	21
The Network and Dial-up Connection Control Panel .....	23
The Network Files Settings Control Panel .....	23
The Network Printer Properties Control Panel.....	24
The Owner Control Panel .....	25
The Password Control Panel .....	26
The PC Connection Control Panel.....	26
The Power Control Panel .....	27
The Printers Control Panel .....	27
The Regional Settings Control Panel.....	28
The RDP Connection Control Panel .....	28
The Remove Programs Control Panel .....	29
The System Control Panel.....	30
The TriCEutility Control Panel.....	30
The Volume & Sounds Control Panel .....	30
<b>Other Information</b> .....	<b>32</b>
Specifications.....	32
Troubleshooting .....	33
Customer Support .....	34
Cleaning the Case .....	35
Limited Warranty.....	36
<b>Appendix</b> .....	<b>37</b>

Safety Guidelines .....	37
Compliance Information for U.S.A. ....	37

**Federal Communication Commission Interference Statement**

This equipment has been tested and found to comply with the limits for a Class B digital device, pursuant to Part 15 of the FCC Rules. These limits are designed to provide reasonable protection against harmful interference in a residential installation. This equipment generates, uses and can radiate radio frequency energy and, if not installed and used in accordance with the instructions, may cause harmful interference to radio communications. However, there is no guarantee that interference will not occur in a particular installation. If this equipment does cause harmful interference to radio or television reception, which can be determined by turning the equipment off and on, the user is encouraged to try to correct the interference by one of the following measures:

- Reorient or relocate the receiving antenna.
- Increase the separation between the equipment and receiver.
- Connect the equipment into an outlet on a circuit different from that to which the receiver is connected.
- Consult the dealer or an experienced radio/TV technician for help.

This device complies with Part 15 of the FCC Rules. Operation is subject to the following two conditions: (1) This device may not cause harmful interference, and (2) this device must accept any interference received, including interference that may cause undesired operation.

**FCC Caution:** Any changes or modifications not expressly approved by the party responsible for compliance could void the user's authority to operate this equipment.

**IMPORTANT NOTE:**

**FCC Radiation Exposure Statement:**

This equipment complies with FCC radiation exposure limits set forth for an uncontrolled environment. This equipment should be installed and operated with minimum distance 20cm between the radiator & your body.

This transmitter must not be co-located or operating in conjunction with any other antenna or transmitter.

# Introduction

The N210 (NexTVision™N210) is an external “Stand-Alone” video process box that can communicate over Ethernet 10/100 or over wireless 802.11x infrastructure. There is an option to attach an external “Patch” antenna that will enhance the wireless signal.

Whenever a monitor is levellesely / Ethernet to the N210 via VGA or DVI/I, it can become a tether “Mira” device.

## Key Features

- Windows CE.Net or XP embedded software image with latest ICA and RDP protocols
- Support wireless feature that built-in 802.11 Mini-PCI with optional external ViewSonic patch antenna or Ethernet 10/100
- MPEG 1, 2 and 4 decoding capability for A/V streaming over IP/UDP/RTP/RTCP protocols.
- Built-in Microsoft IE Browser and variety of PLUG-IN's
- Configurable to multiple platforms via an I/O adapter card
- High performance 2D/3D graphics controller
- Rich Multimedia experience for playing mp3 and Windows Media Player music and various video files
- Supports 16 bits stereo sound with built-in Microphone-in, Headphone-out, and Audio-out
- A quickly recovery button for software image recovery

## Package Contents

This NexTVision comes with the items shown below. Check to be sure your unit is complete.

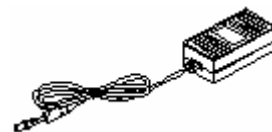
1. NexTVision N210 main unit
2. Power supply & US power cable
3. Quick start card
4. USB keyboard & mouse
5. Patch antenna bundle optional



NexTVision main unit



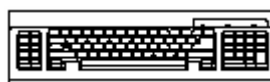
USB Mouse



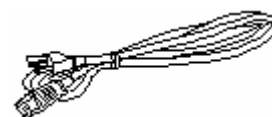
Power Adapter



Patch antenna



USB Keyboard



Power Cord



Quick Start Card

## **Precautions**

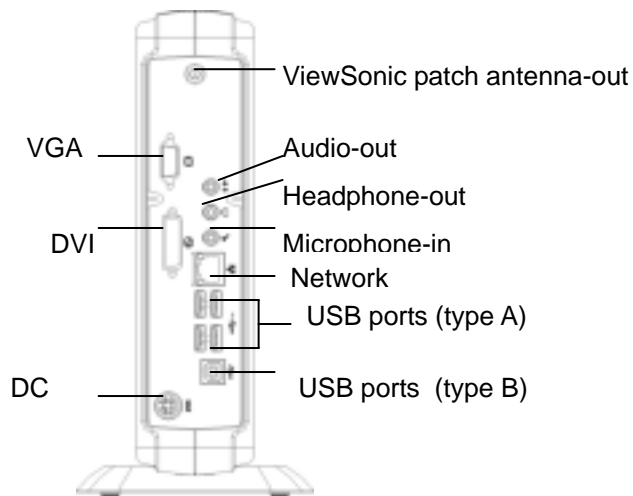
- 1) Avoid exposing your N210 to direct sunlight or another heat source. Orient your N210 away from direct sunlight to reduce glare.
- 2) Always handle your N210 with care when moving it.
- 3) Place your N210 in a well-ventilated area. Do not place anything on your N210 that prevents heat dissipation.
- 4) Ensure the area around the N210 is clean and free of moisture.
- 5) Do not place heavy objects on the N210, or power cord.
- 6) If smoke, abnormal noise, or strange odor is present, immediately switch the N210 off and call your dealer or ViewSonic. It is dangerous to continue using the N210.

# Start Your Installation

## Connecting the NexTVision N210

Follow these instructions to connect the NexTVision N210 to its peripheral devices:

1. Plug one end of the power cord to an AC outlet and the other end into the power adapter. Then connect the power adapter to the N210.
2. Connect the monitor to the video connector port?
3. Connect the USB keyboard and USB mouse to the USB type A ports.
4. Connect the ViewSonic patch antenna to the antenna out and screw in the bolt or connect the 10/100-TX network cable to the RJ-45 network connector.
6. Connect the printer or other compatible devices to the USB type A port if necessary. (see figure below.)



## Connector Descriptions

### □ Power Connector

Connects the power adapter with the power cord to the device

### □ RJ-45 Network Connector

Connects the built-in 32-bit 10/100-TX Ethernet network LAN Controller to a host or Hub

### □ LED Lan Link and activity Indicators

Green: Green-on indicates a successfully connected network link.

Amber: Amber-on indicates that network packets are being sent or received through the RJ-45 port

### □ Audio out

Connects line output for Audio

### □ Headphone out

Connects an external speaker or headphone

### □ Microphone In

When the host server supports a record software program and the related protocol as well, the connects a microphone (when host server supports a program for audio recording and related protocols)

### □ USB Ports (type A)

Connects USB type peripheral such as keyboard and mouse

□ **USB Ports (type B)**

Allows image recovery via the USB port (connector-B)

□ **VGA Port**

Connects a standard VGA compatible device

□ **DVI**

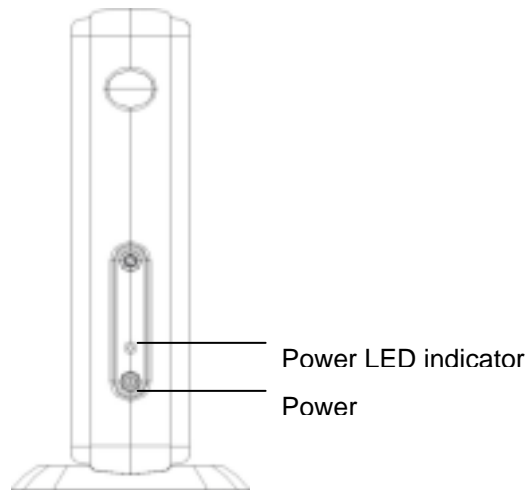
Connects a high quality Digital Video Interface compatible device

□ **Antenna-out**

Allows wireless connection, please connect the ViewSonic patch antenna and screwed the bolt

## Power On

When you have made all the connections, turn on the NexTVision N210 by pressing the power switch then turn on the monitor.



## Control Button Descriptions

□ **Power Switch**

Press this button to turn the device on or off.

□ **Power LED Indicator**

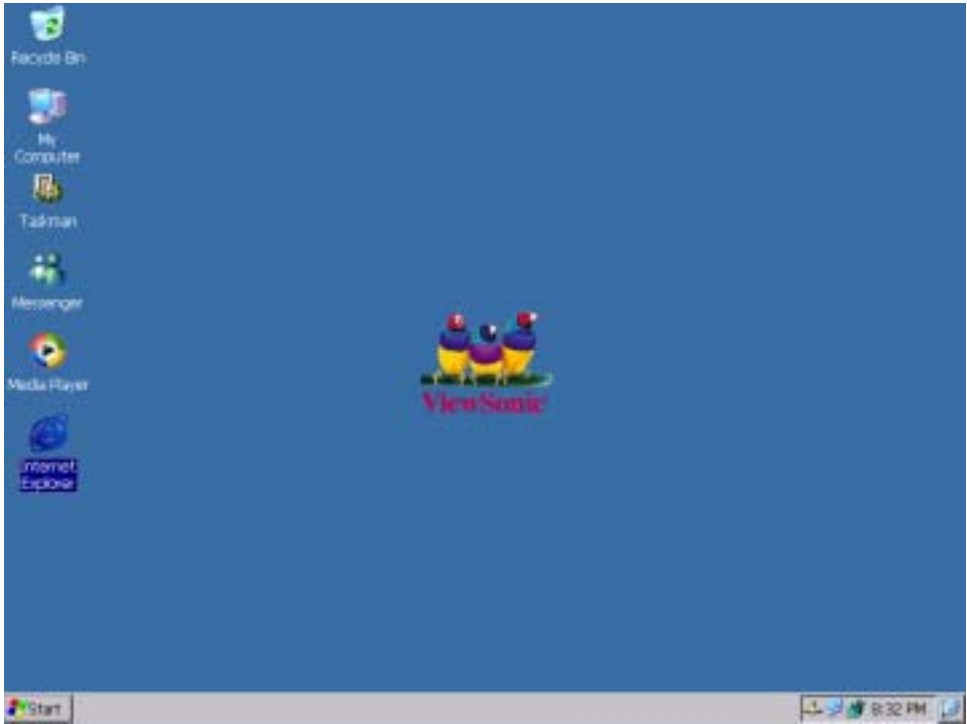
Green: indicates the system is powered on.

Amber: indicates the device is in sleeping status.

Green: when blinking indicates the Brightness adjustment value has reach its limitation.

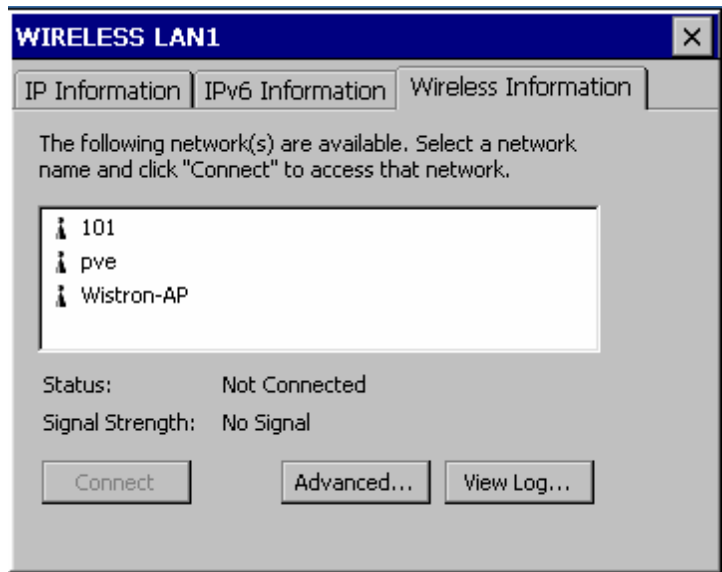
# Getting Started

Push the **power-on** switch to turn on the device so you can access the **Windows CE.Net** operating system (OS).



## Wireless connection

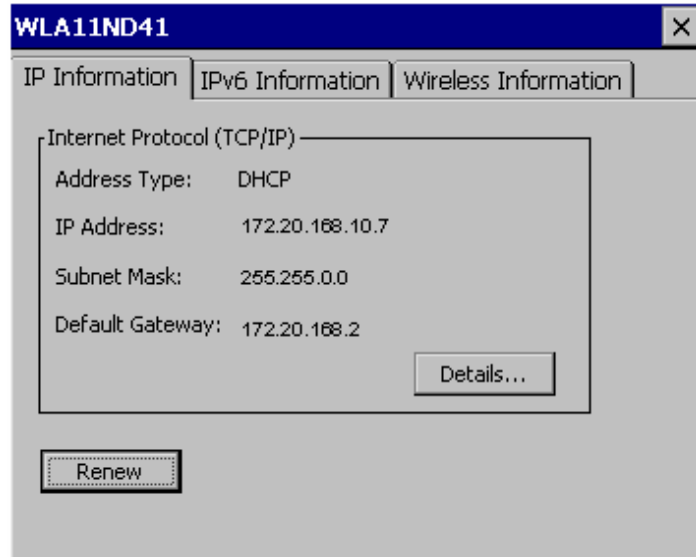
You can connect a ViewSonic patch antenna to the NexTVision N210 for wireless connection. With the NexTVision N210 on, and the wireless connection active, the wireless network properties will appear on the screen. These include the **IP information** tab, **IPv6 information** tab, and **Wireless Information** tab.



All available Access Point servers around will have been automatically detected. Please choose one then press the **Connect** button to connect the chosen Access Point (AP). Once a wireless connection is activated, its connection status and signal strength will be displayed showing data such as “status : good” and “signal strength : high”. **IP information** is detected automatically as



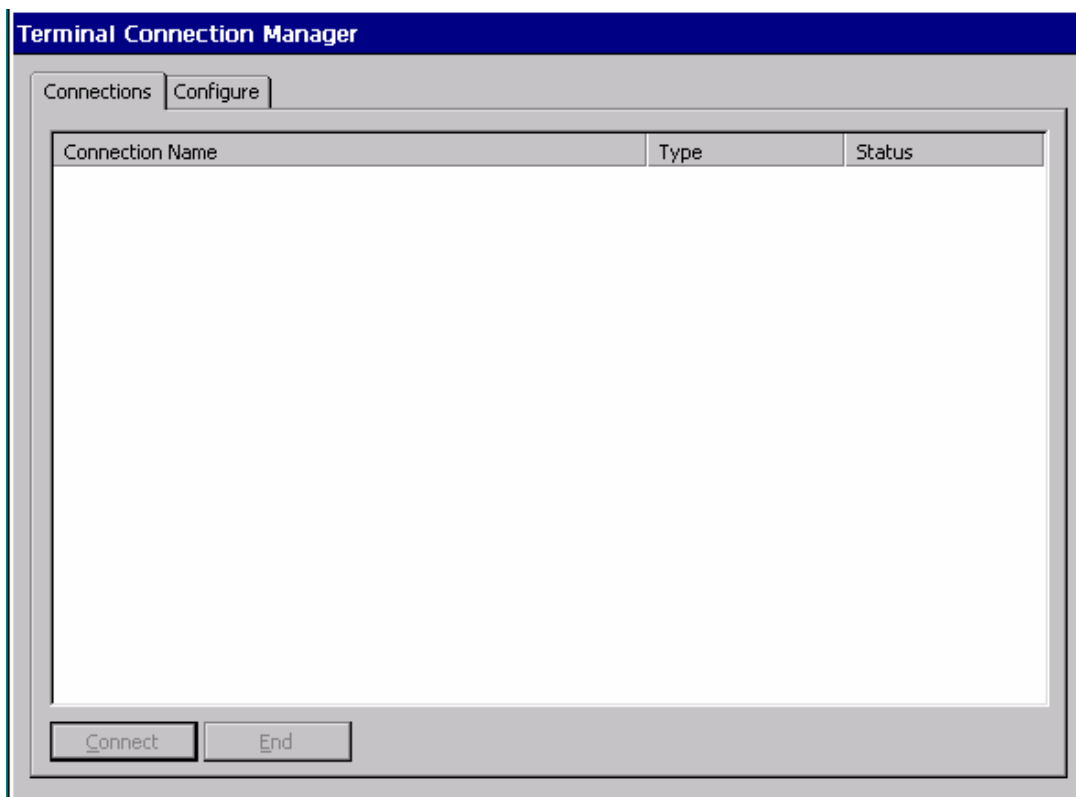
shown below. You can also click the **Renew** button to set a new **IP address**.



When you have confirmed that your wireless network connection is active, you can close this window.

## Taskman

The Terminal Connection Manager will help you to manage your network connection. Shown here is the Terminal Connection Manager dialog box with its **Connections** properties and **Configure** properties tabs.



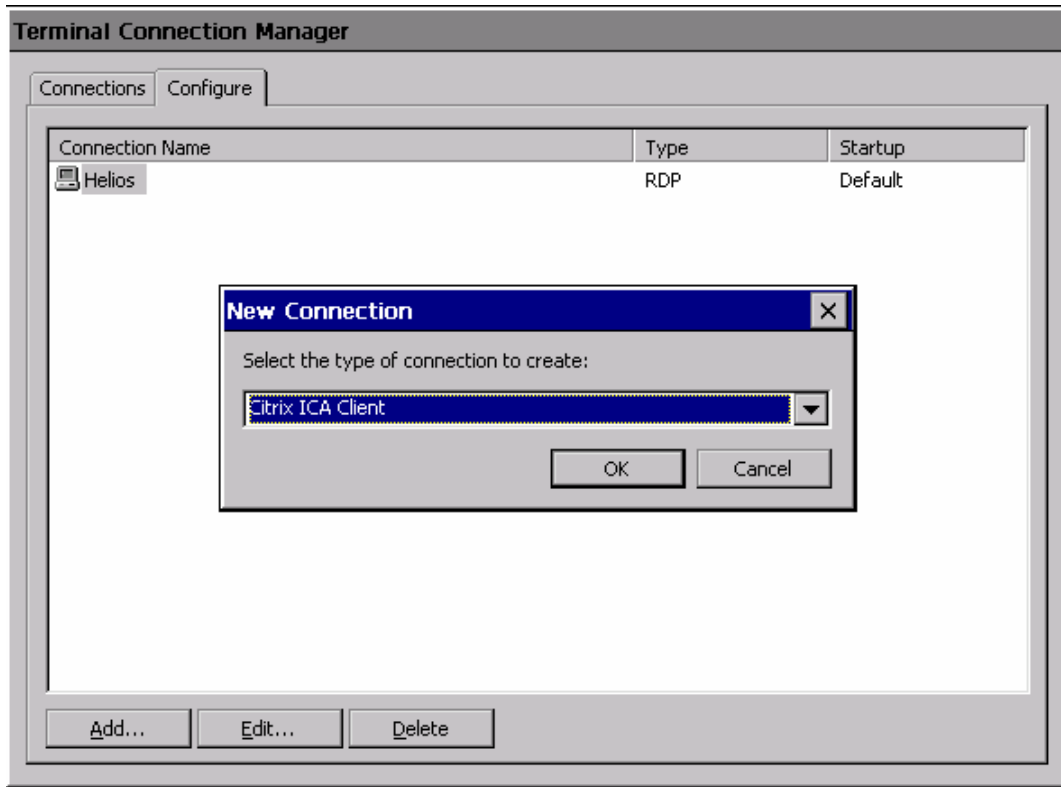
### Connect TAB

Highlight a connection from the Connection Name box then click the **Connect** button to make a server connection. You can also just double-click this connection to make a server connection. The user can define any number of host connections for each client available on

a unit.

## End

To end the connection, highlight the required connection then click the **End** button.



## Add Button

This function is used for creating a new connection. Select the **Configure** icon then click this **Add** button to create a new connection.

### •RDP

This is a terminal service client that allows you to connect to a Microsoft NT or Windows 2000 terminal server.

You can access a Windows Terminal Server and use all programs installed on the server via Remote Desktop Connection. For example, you can run the desktop version of **Outlook** instead of **Inbox**.

### •ICA

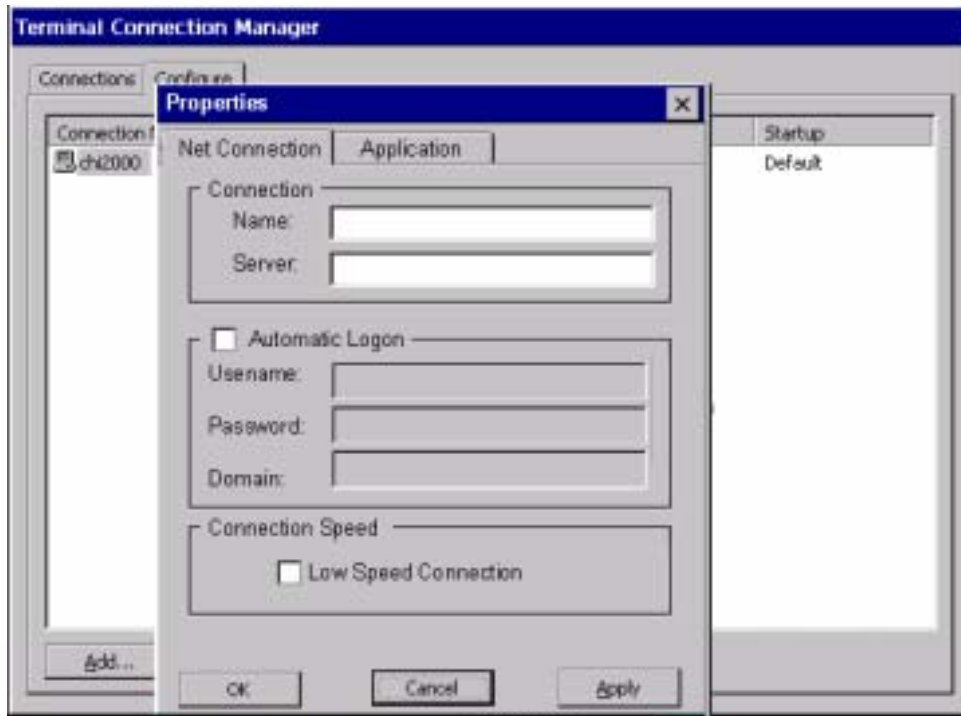
The Citrix ICA (Independent Computing Architecture) is also a terminal service client. It allows you to run Citrix MetaFrame software and connect to the terminal server. When you access to the server, you can use all the programs installed on the server via the ICA protocol.

## Edit Button

The **Edit** command button allows the user to edit the properties of an existing connection. Highlight the connection from the Configure list then click the **Edit** button. (You can just double click the **Connection** from the Configure tab to make changes.)

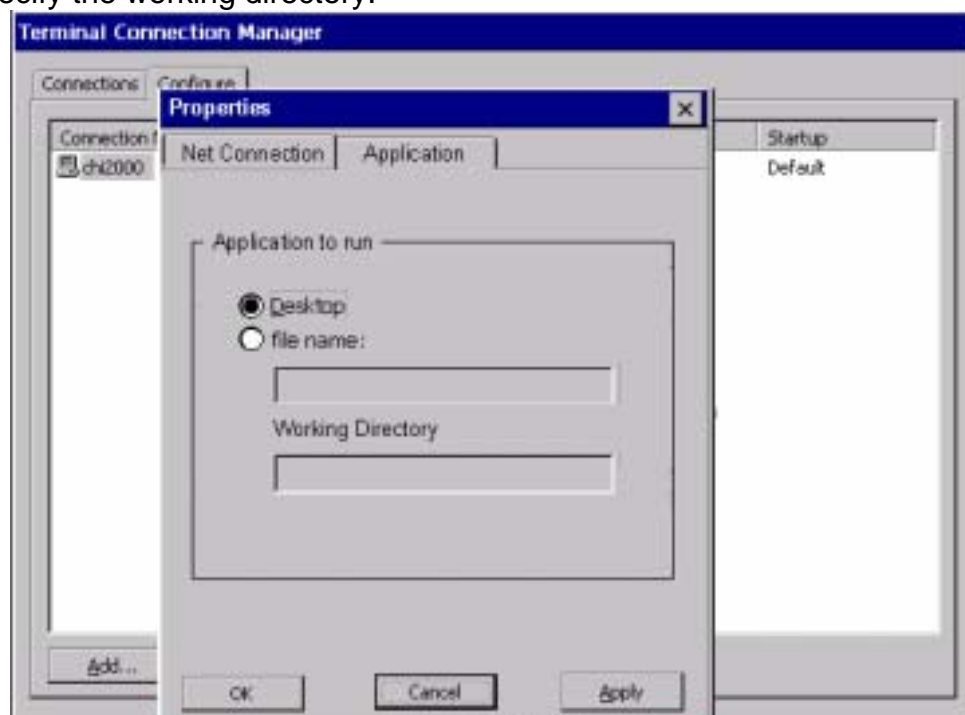
## Net Connection TAB

Use this function to adjust the connection server name and the server address. If you want to automatically log onto the server, select the **Automatic Logon** icon. Enter the Username, Password, and Domain information in these fields.



### Application TAB

Use this to select the application type you want. Initially, the Windows NT Desktop is selected by default. You can also select the **File name** button, enter the name of the application you need then specify the working directory.

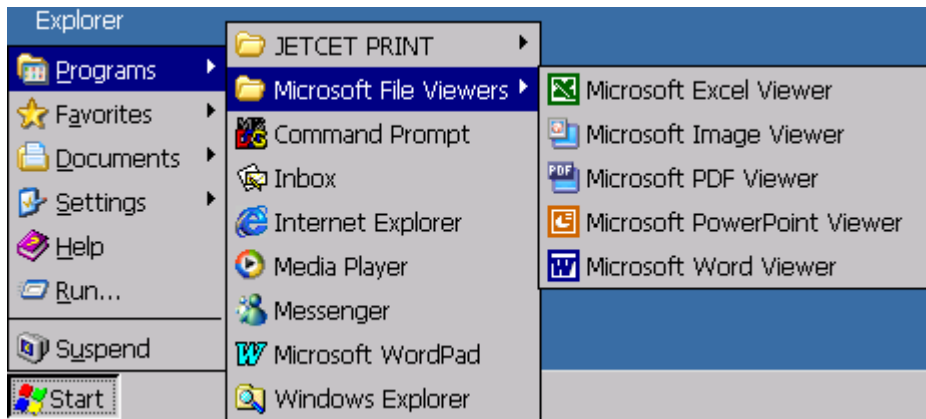


### Delete Button

In the menu window, use the **Delete** button to delete a connection. Choose the **Connection** you want to delete, click this **Delete** button. The Confirm Connection Delete dialog box will appear. Click **Yes** to complete the deletion. Click **No** to cancel the deletion.

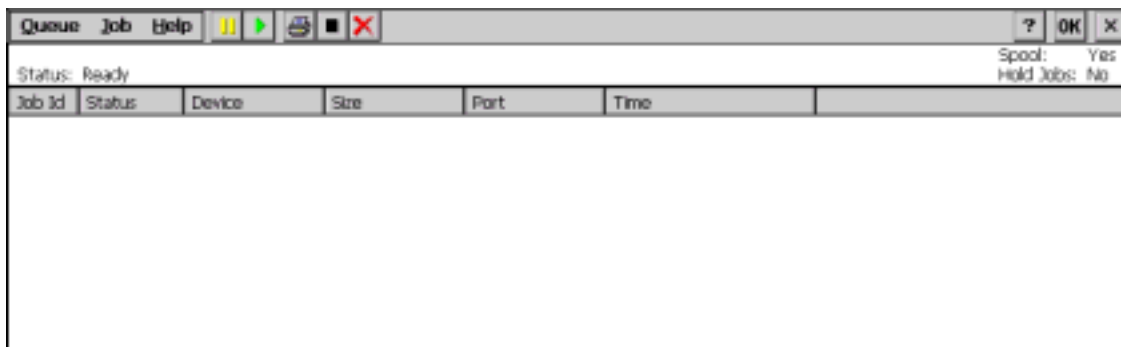
## Program

To open a program that isn't on the desktop, select the Program's name from **Programs** on the **Start** bar. There are many applications available as shown here.



## JETcent Print

Spool documents to be printed, then open the **JETCET PRINT Spool** from **Programs** to print them.



## File Viewer

The Microsoft **File Viewers** provided include the following.

1. **Word Viewer:** Four files are created from Microsoft Word 97, Word 2000 and Word 2002 including Rich Text Format (.rtf) can be read
2. **Excel Viewer:** The Excel Viewer displays documents created by Microsoft Excel 97, Excel 2000 and Excel 2002
3. **Image Viewer:** Use this application to browse the picture files including bitmap, JPEG, PNG and GIF files
4. **PDF Viewer:** Read Portable Document Format (PDF) files that have a .pdf extension
5. **PowerPoint Viewer:** View your presentations created in Microsoft PowerPoint 97, PowerPoint 2000 and PowerPoint 2002



## Command Prompt

You can execute any command in the **command prompt** window, please key in command name after C:>. (Key in "**command\_name /?**" to find out more details.)



## Inbox

You can create an e-mail service in the **Inbox**. You will need to provide settings information such as POP3 or IMAP4 server name, SMTP host name, user name, password, and domain name. You can this info from your **Internet service provider (ISP)** or your **Network Administrator**. To setup an e-mail service, open the **Inbox** application then select **Options of Services** name, press the **Add** button to set the service type, then follow the steps in the Setup Wizard.



You can browse the web page with **Internet Explorer** after establishing an Internet connection. As a web page is downloaded, a small hourglass icon will show at the bottom of your screen.



Microsoft Media Player provides an audio and video files player for files download, or from an internet Web-site or FTP-site.



The **Messenger** function allows you to communicate in real-time using text-based messaging, VoIP, and more. Please follow the on-screen **Wizard Guide** directions to setup **Messenger** then click **Next** to continue.



- **See who's online.**  
When your colleagues are online, they can see and contact you. You can send and receive instant messages to them. You can also announce your own presence to a list of watchers that you define.
- **Talk by microphone**  
Talk with a colleague anywhere in the world using the microphone and speakers on your device. The Messenger supports high-quality voice calling from your Windows CE device.
- **Communicate using Session Initiation Protocol (SIP) or Hotmail contacts**  
Windows Messenger supports communication with your colleagues in the enterprise using SIP-based communications service. You can also talk to your Hotmail contacts using the .NET Messenger.

### **WordPad**

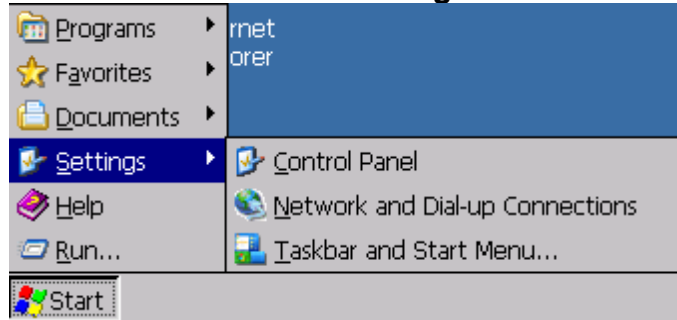
You can create and edit documents or templates in **WordPad**. The **WordPad** look and feel is similar to the desktop version of Microsoft word.

### **Help**

If you have any problems or need more detailed information, please use online HELP.

# Settings

System settings information is maintained by the various control panels provided under settings in the **Start Bar**. There are a lot of tools that control and maintain mainly system hardware configuration information in the **Control Panel** of **Setting** name from the **Start bar**.



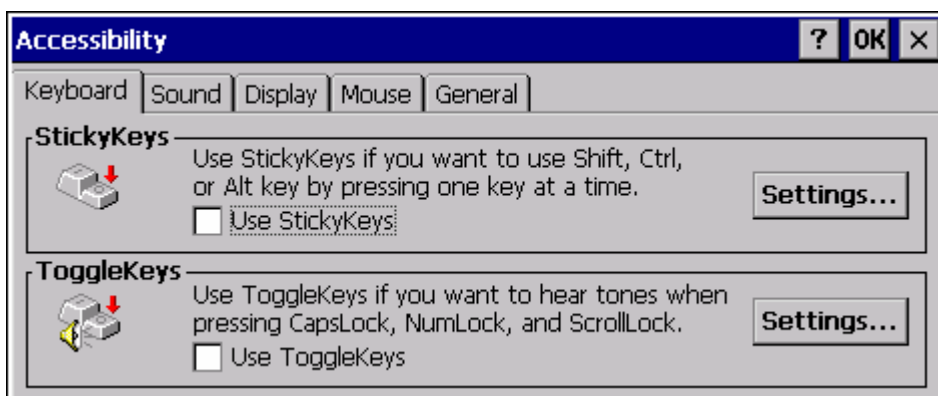
The settings functions provided include: **Accessibility, Certificates, Date/Time, Display, Internet Options, JETCET PRINT Pro, Keyboard, Mouse, Management Tool, Network and Dial-up connection, Network Files Settings, Network Printer Properties, Owner, Password, PC Connection, Power, Printers, RDP connection, Regional Settings, Remove Programs, System, TriCEUtility and Volume & Sounds**. Double-click an icon to open the dialog for that setting.



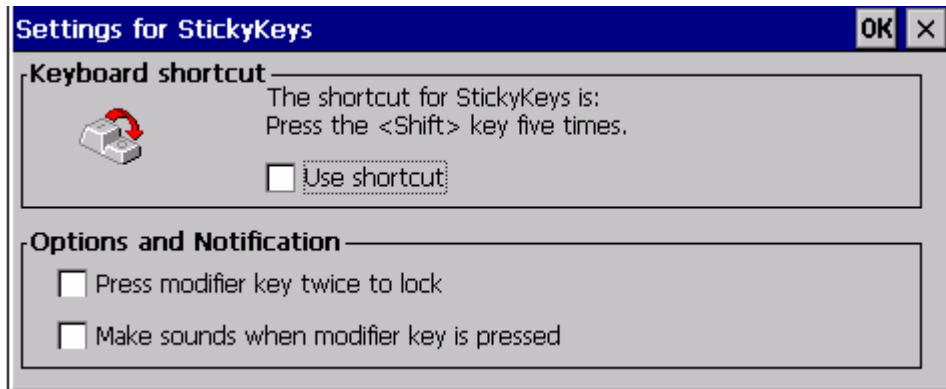
## The Accessibility Control Panel

**The Accessibility** options allow a user with physical limitations to more easily use the system. Double-click the **Accessibility Options** icon to open the dialog box, it provides five properties in which you can enable and configure options to improve accessibility.

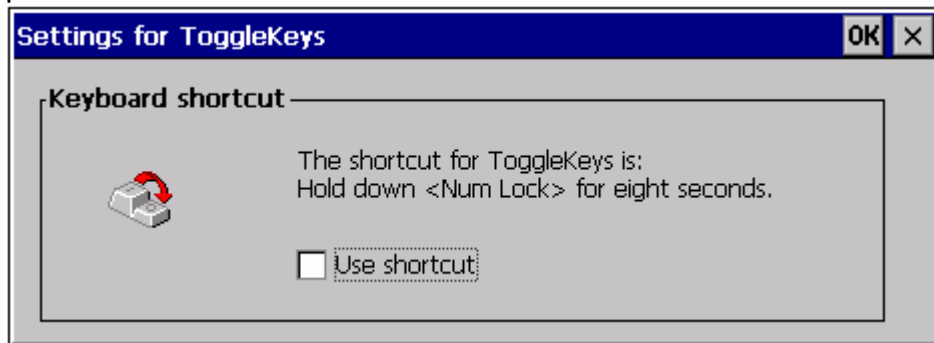
### Keyboard TAB



**StickyKeys:** Selected the StickyKeys option for simulation the effect of pressing a pair of keys, such as CTRL-X. Hold down the CTRL, ALT, or SHIFT key first then press another key so that these keys are pressed together. Press the **Settings..** button for advance setting as shown in the following figure.

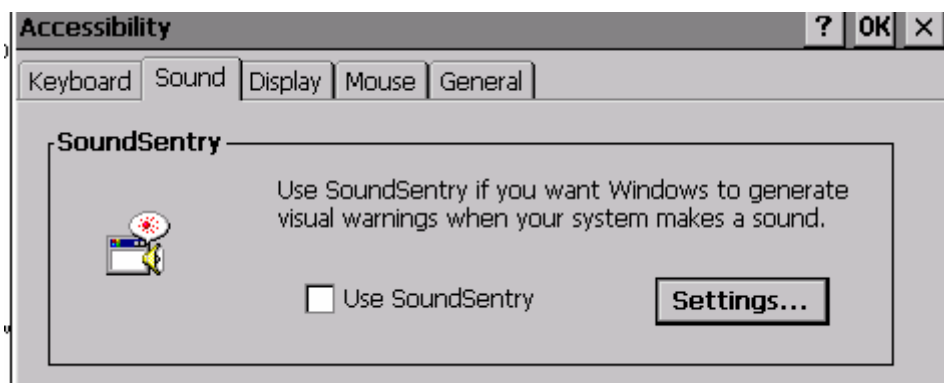


**Togglekey:** Selected the ToggleKey option to generate a tone when pressing the CAPS LOCK, NUM LOCK and SCROLL LOCK keys. Press the **Settings..** button to enable the shortcut option.



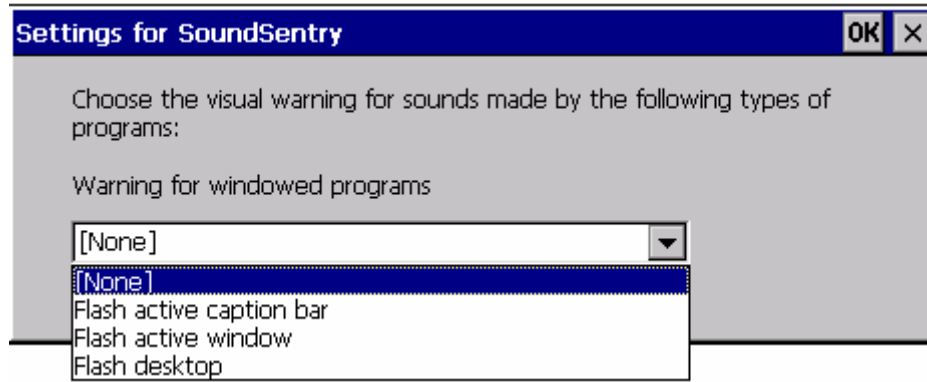
## Sound TAB

**SoundSentry:** Displays a visual indicator when your system makes a sound. The indicator can be a flashing active window, a flashing active caption bar, or a flashing desktop.



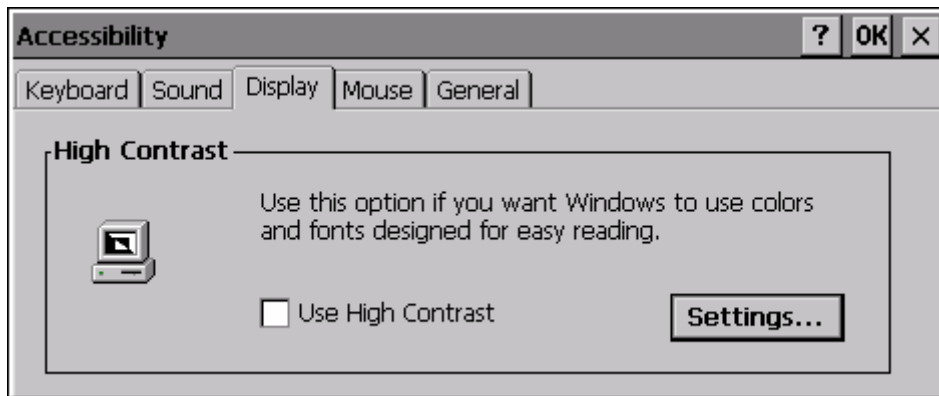
Click the settings.. button to choose the sound type for the visual indicative used.



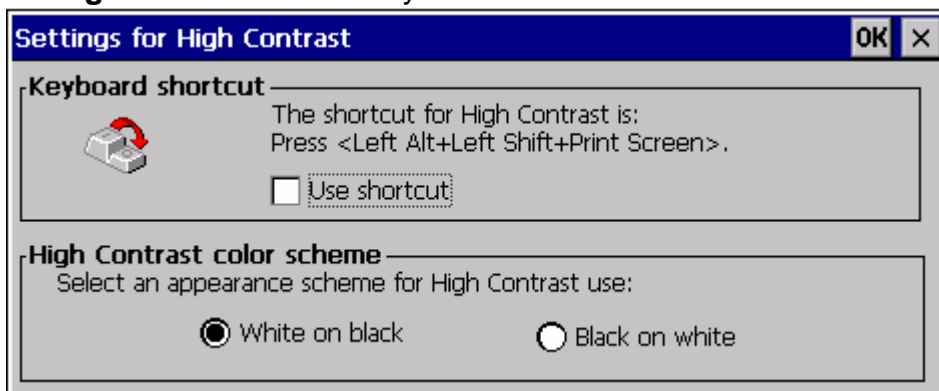


## Display TAB

**High Contrast:** Use high-contrast colors and special fonts to make the screen easy to read and use.

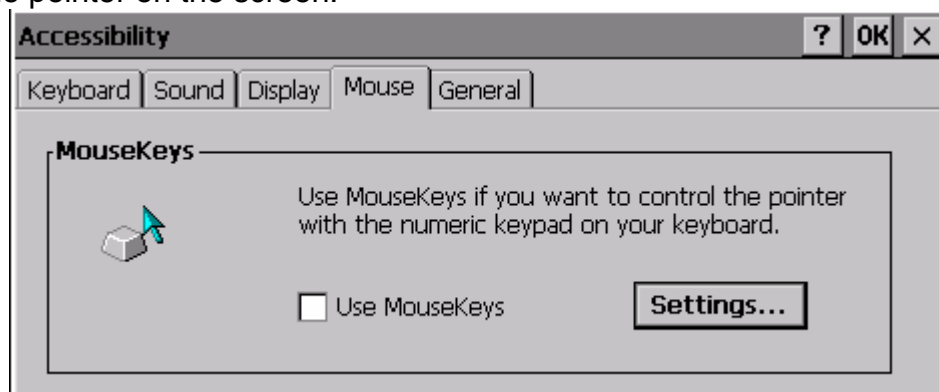


Click the **Setting..** button to set the keyboard shortcut and color scheme.

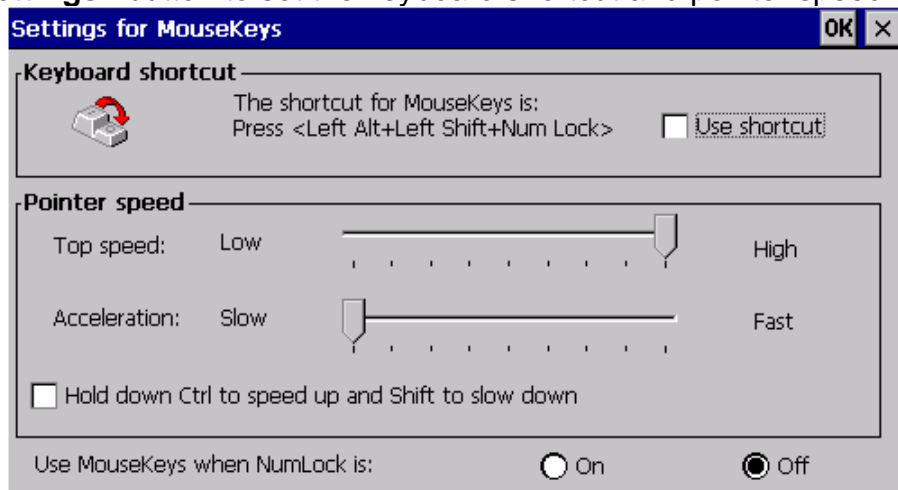


## Mouse TAB

Select the **Use Mousekeys** option to enable the numeric keypad instead of the mouse for moving the pointer on the screen.

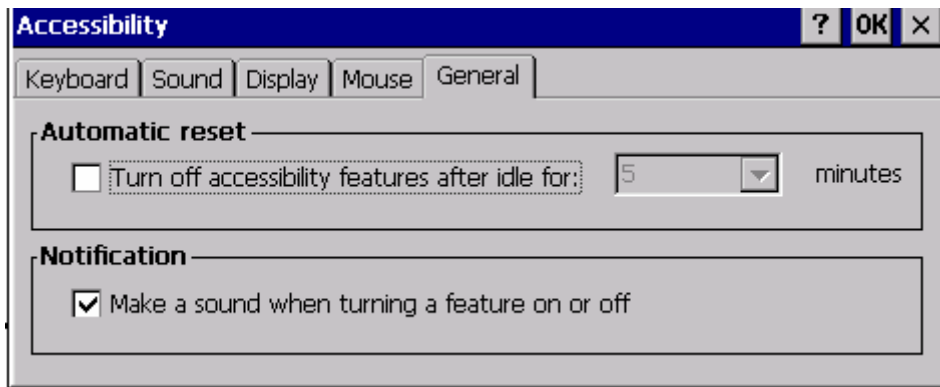


Click the **Settings..** button to set the keyboard shortcut and pointer speed.



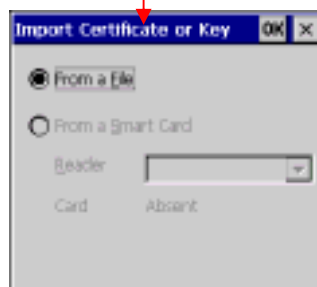
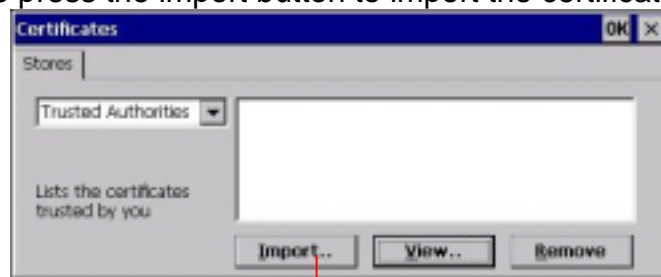
### General TAB

Provides settings for managing the options in the **General** tab, including when to automatically turn off the options and whether to give a warning when turning on or off an option.



### The Certificates Control Panel

Certificates Properties dialog box allows you to view your device Certificates information and the dialog box. You can also press the import button to import the certificates from a file.



## The Date/Time Control Panel

**Date/Time** Properties allows you to set the date and time on the device.

Use the calendar to set the date. Select the **Time Zone** and check the dialog box if daylight savings time is currently in effect. To manually set the time, enter a time slightly ahead of the actual time in **Current Time** text box, and then just as the actual time reaches the set time, click on the **Apply** button.

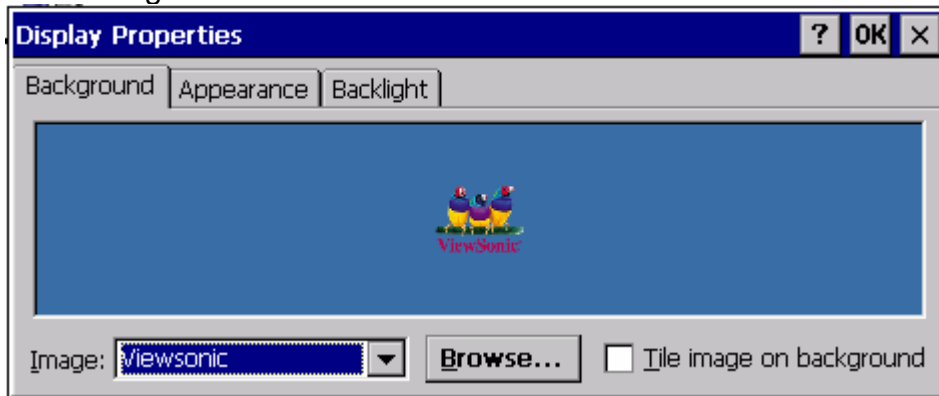


## The Display Control Panel

**Display** Properties allows you to set your **Background**, **Appearance**, and **Backlight** Time Out settings.

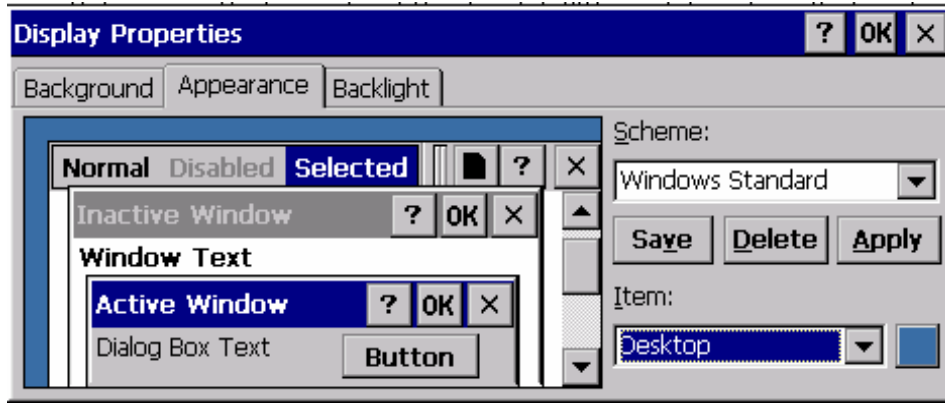
### Background TAB

The ViewSonic logo is the default background. You can press the **Browse** button to change the background image.



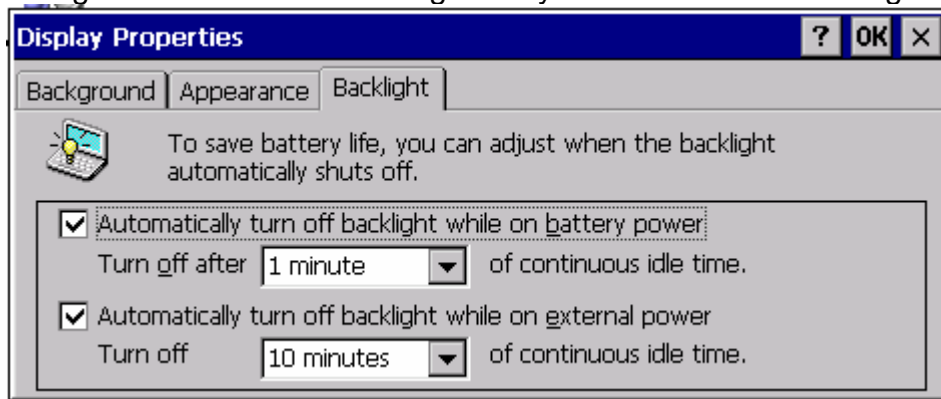
### Appearance TAB

Changes the color scheme of the desktop.



### Backlight TAB

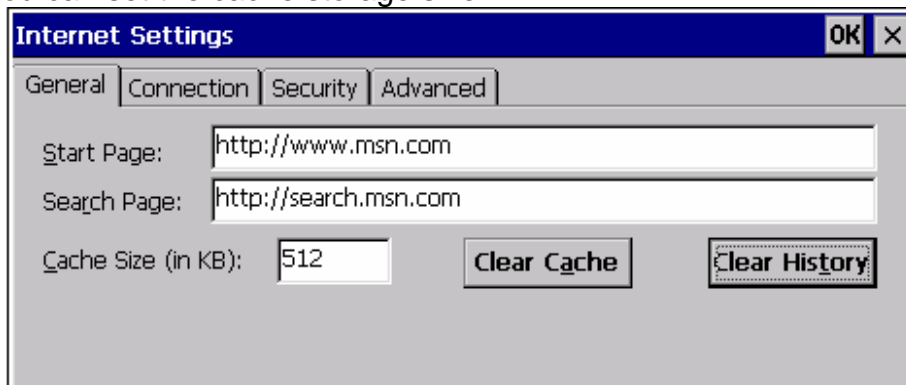
Sets the backlight shut off time for saving battery life. You can also change the time setting.



## The Internet Options Control Panel

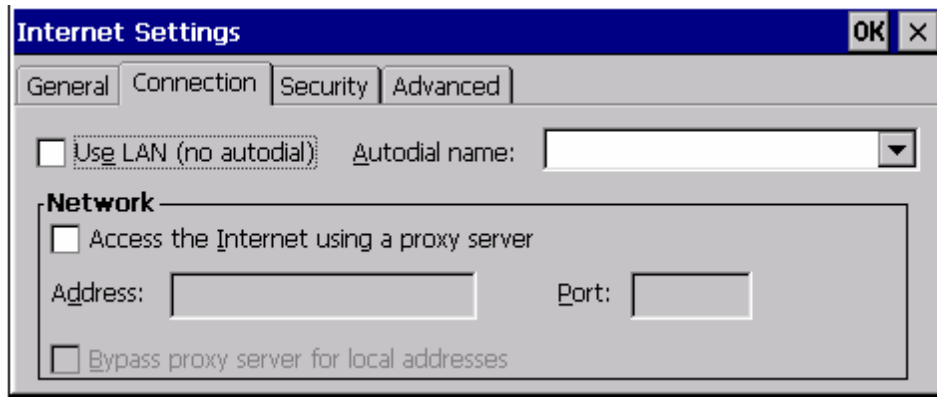
### General TAB

The start page field allows you to set the web browser's default start up page. You can also set the search web site for your searching. Web page favorites are stored in the cache memory. You can set the cache storage size.



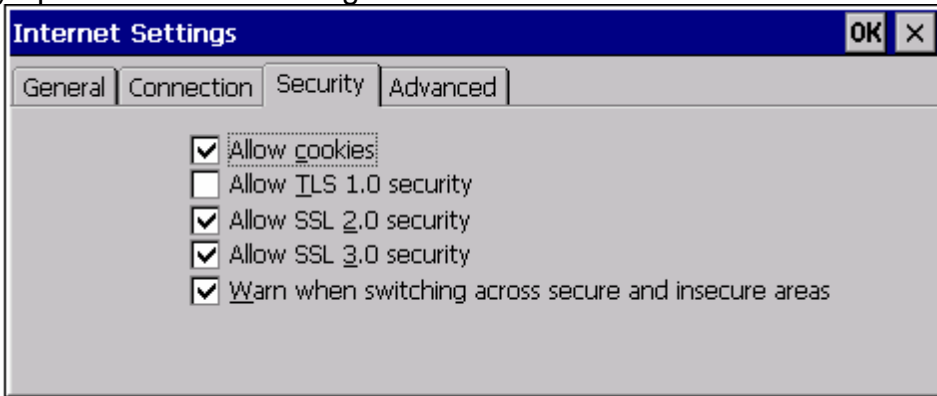
### Connection TAB

Sets the **LAN** or **Autodial** connection and enables the proxy server when you access the Internet.



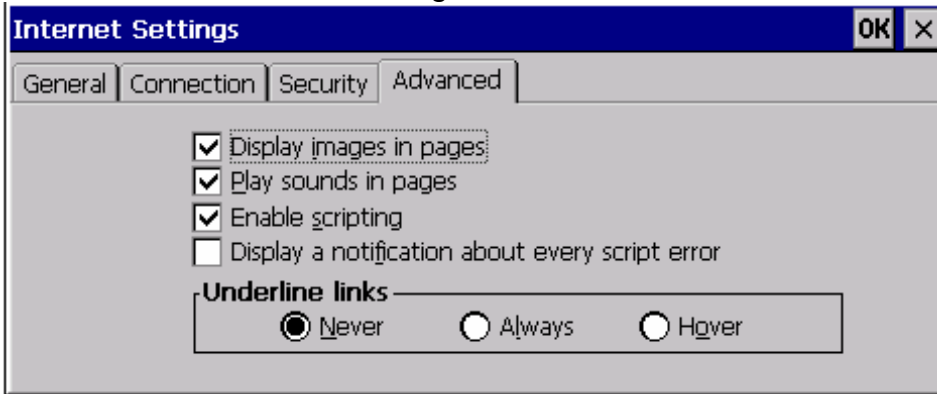
### Security TAB

Sets security options when accessing the Internet.



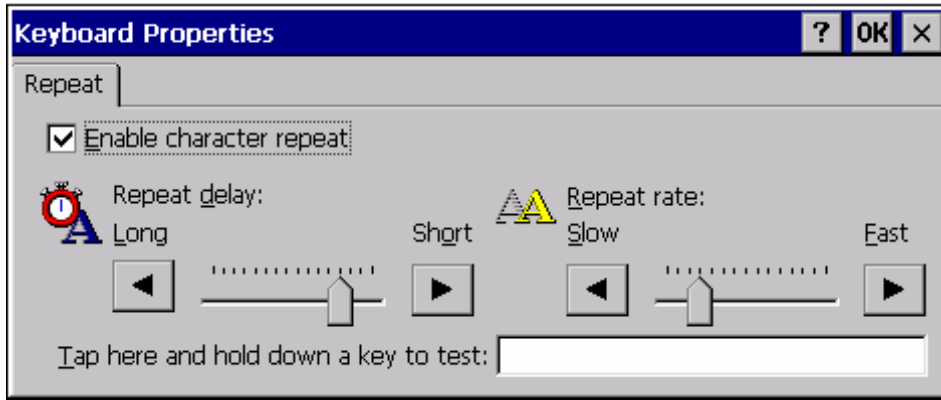
### Advanced TAB

You can set advanced function for browsing.



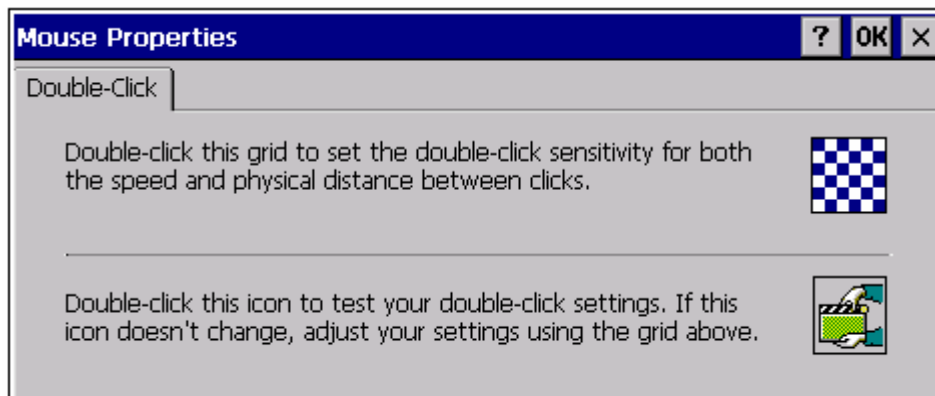
### The Keyboard Control Panel

The Keyboard properties are settings for the keyboard configuration. You can set the cursor blink-rate and repeat-rate.



## The Mouse Control Panel

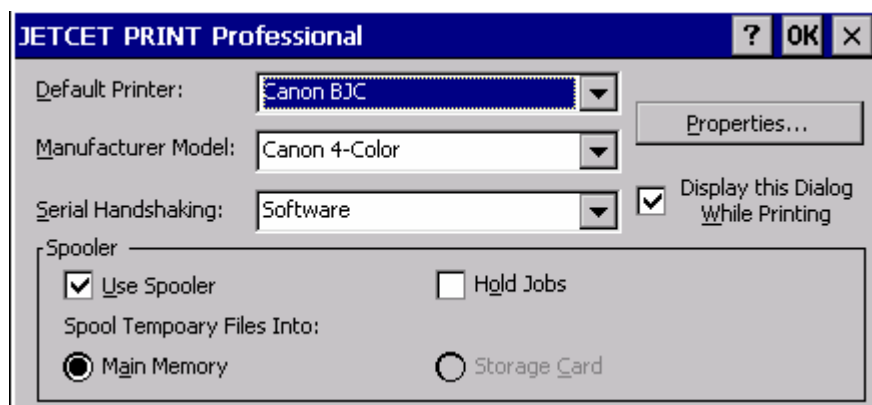
Tap the checkerboard grid to adjust the speed as needed Double-tap the clipboard icon for testing.



## The JETCET PRINT Pro Control Panel

The **JETCET PRINT** dialog sets the default printer and it's properties. Press the **Properties** button to configure JETCET Print to meet printing requirements.

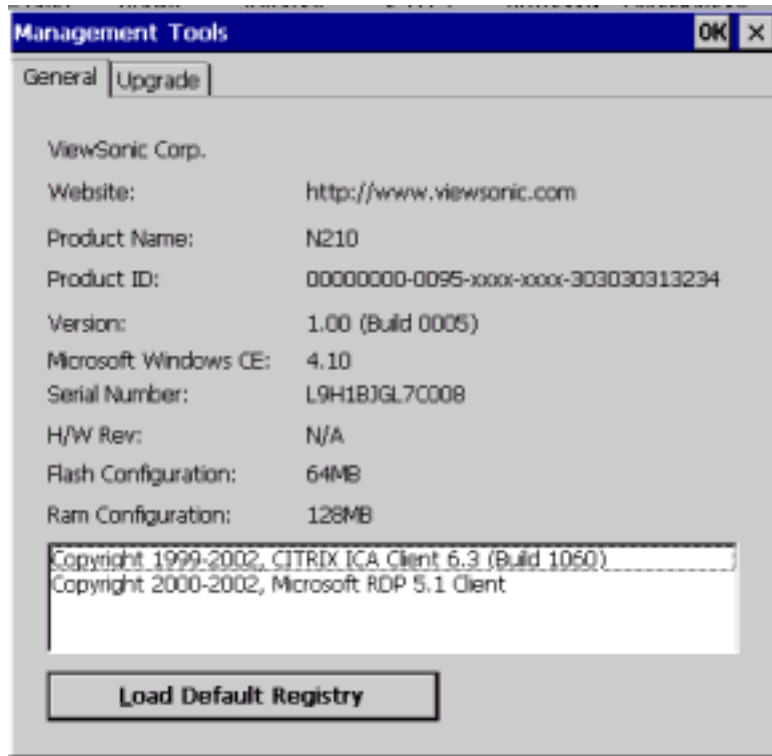
Enable the **User Spooler** option, to print the spooled document in **JETCET** spool. Otherwise, select the **Hold Jobs** to hold it.



## The Management Tools Control Panel

### General TAB

Provides general information that including "Company Name", "Web site", "Copyright", "Product Name", "S/N", "Software version", and "Microsoft Windows CE version".



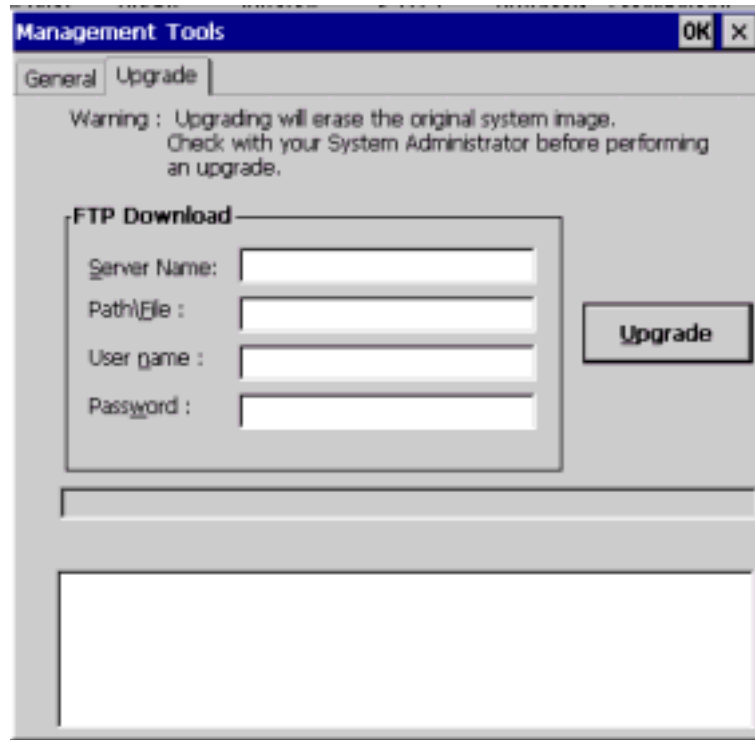
## Upgrade TAB

**Upgrade** sets properties for a quick upgrade of Fireware and OS via FTP protocol from your server.

Enter the server name, file name, user name and password in the FTP upgrade setting field then press the **Upgrade** button to upgrade immediately. Make sure the server is ready before attempting an upgrading process.

If the connection failed or no designated file is found, the dynamic upgrade will do nothing. When successfully downloaded, the upgrade will prompt you with a Restart dialog box to boot up the new system image

***[Note:] It is the system administrators responsibility to manage upgrade privileges on the FTP server side. The Default user account will be anonymous if you leave the connection field blank.***



## The Network and Dial-up Connection Control Panel

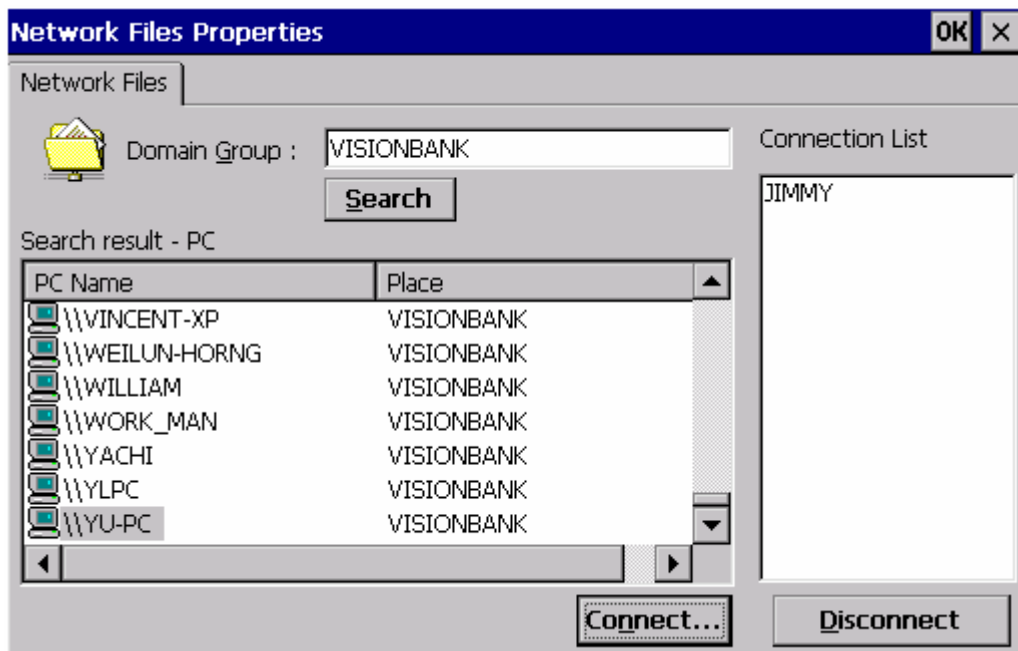
Click the **Make New Connection** icon then follow the **Network Connection Wizard** to establish connections. You can also click one of the **Connection** icons to configure the connection properties.



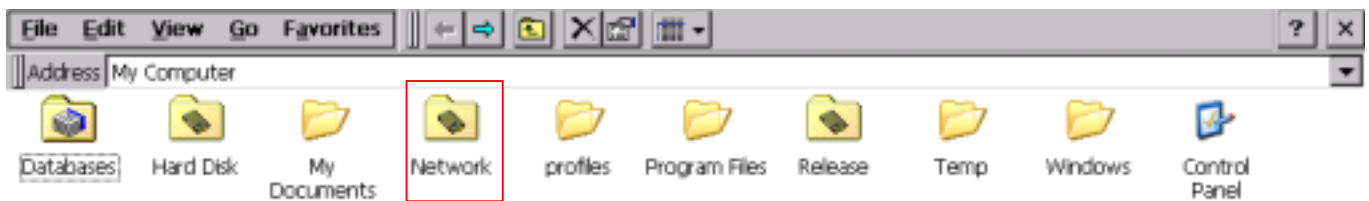
## The Network Files Settings Control Panel

To set a network file in the **Network File Properties**, key in the Domain Group name then press the **Search** button to search all available computers on the domain network. You can pick someone from the search result list then click the **Connect..** button to connect. Or you can pick someone up from the connection list then click the **Disconnection** button to disconnection.



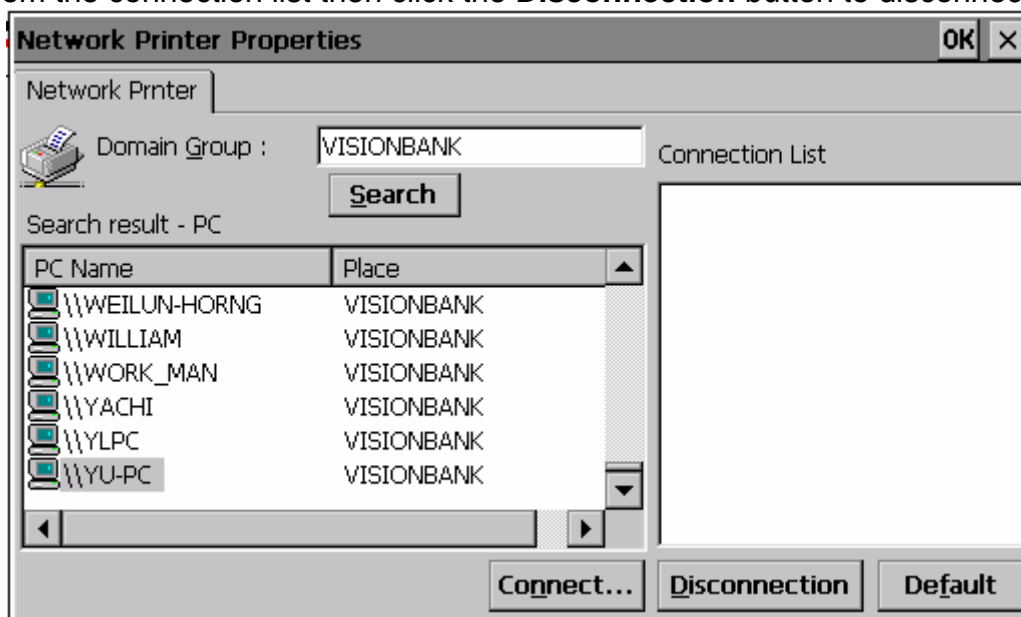


Key in the Server name, user name, and password in the appropriate field then click the **Connect** button to connect. This will allow you to find the **Network Files** in the My Computer/ Network directory.

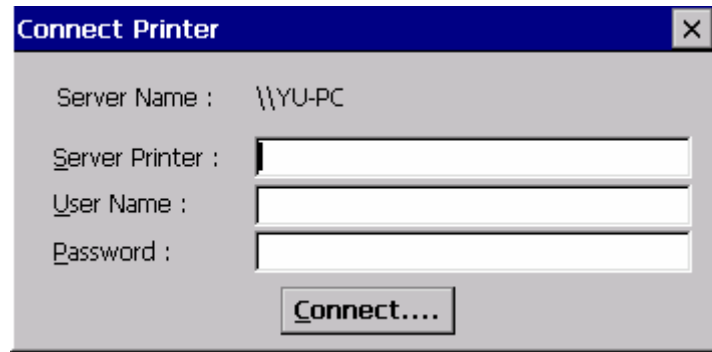


## The Network Printer Properties Control Panel

To set a network printer in **Network Printer Properties**, key in the Domain Group name then press the **Search** button to search all available printers in the domain network. You can pick someone from the search result list then click the **Connect..** button to connect. Or, you can pick someone from the connection list then click the **Disconnection** button to disconnection.

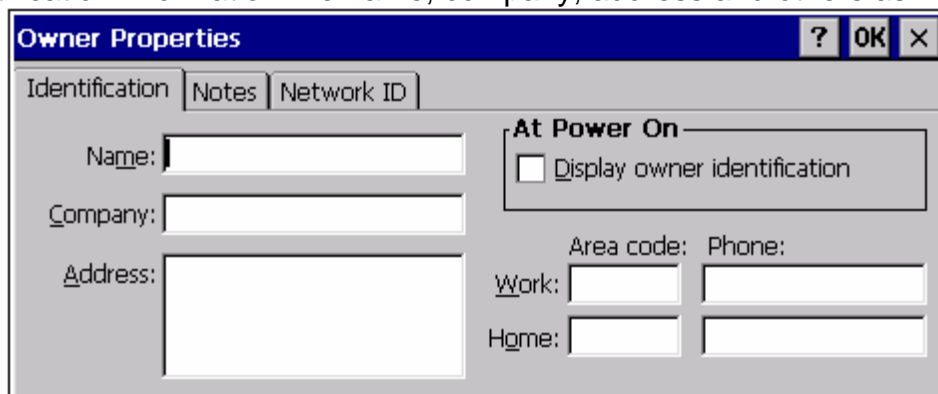


key in the Server Printer name, user name and password in these fields then click the **Connect** button to connect. Then you can find out the **Network Printer** in the My Computer/ Network directory.

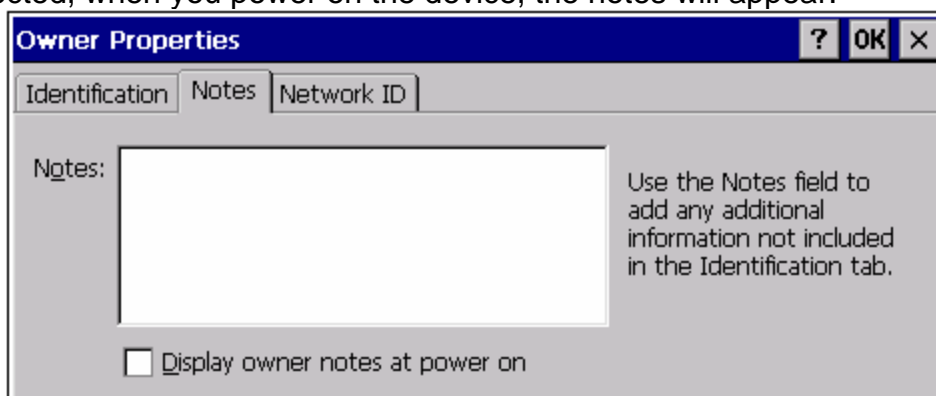


## The Owner Control Panel

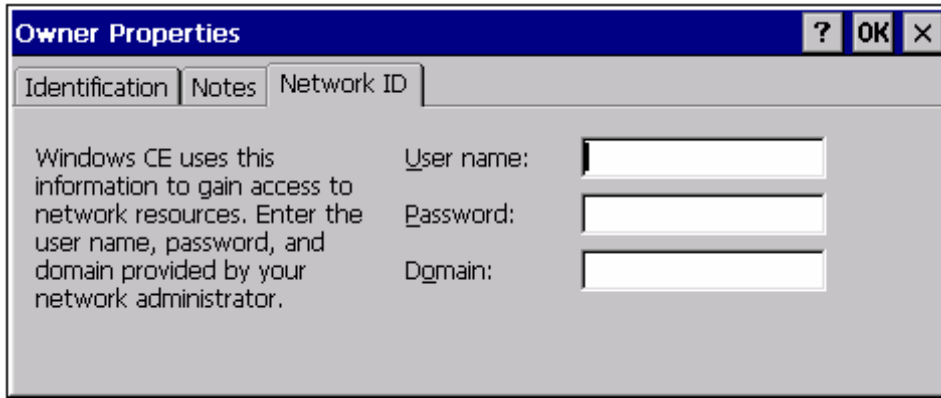
Manage user accounts in the **Owner Properties** windows. You can create a new user account and fill in identification information like name, company, address and others as need.



If you wrote some additional information in the **Notes** field and if the **Display owner notes at power on** is selected, when you power on the device, the notes will appear.

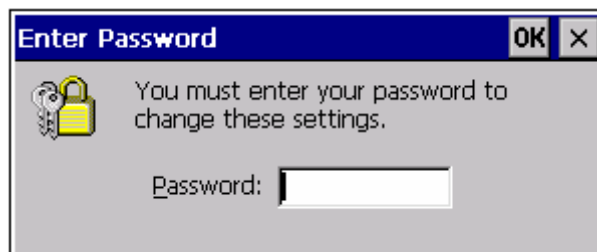
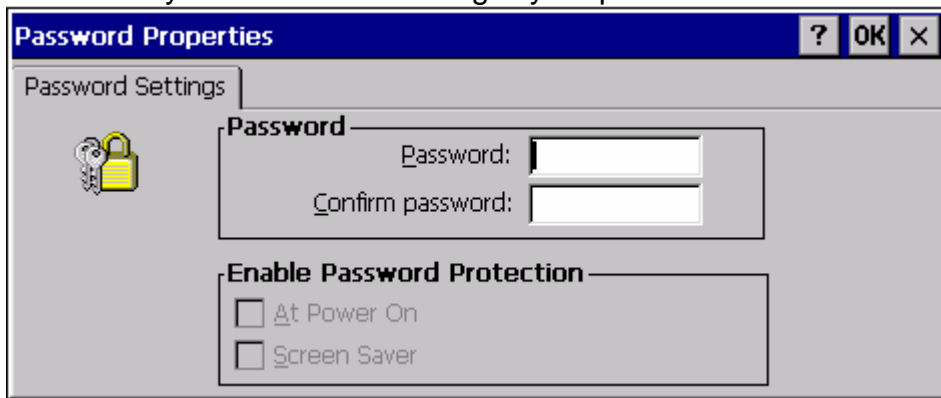


Set the user name, password and domain name that will be asked to log on to when you access network resources.



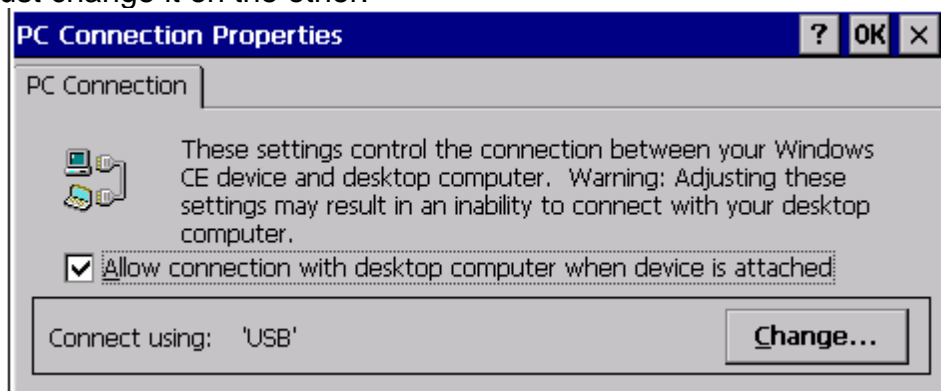
## The Password Control Panel

A password is created for protecting the control panel settings. When you open any control panel property the **Enter Password** dialog box appears. If you have selected the **Enable Password Protection At Power On** you will be asked to log in your password when the device is started up.

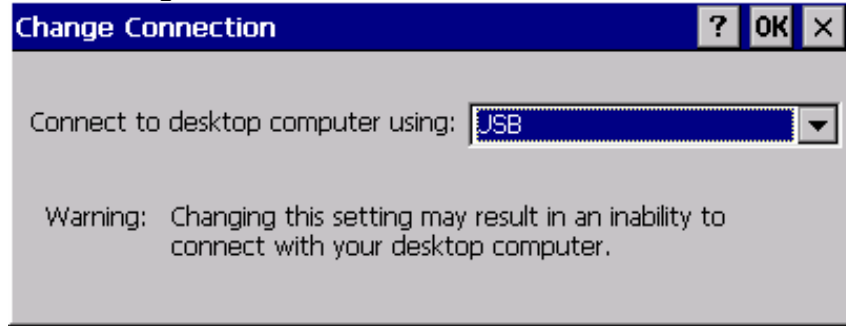


## The PC Connection Control Panel

Make sure **Allow connection with desktop computer when device is attached** is selected. Due to the baud rate of your device you must match the baud rate on your PC. If you change one setting, you must change it on the other.

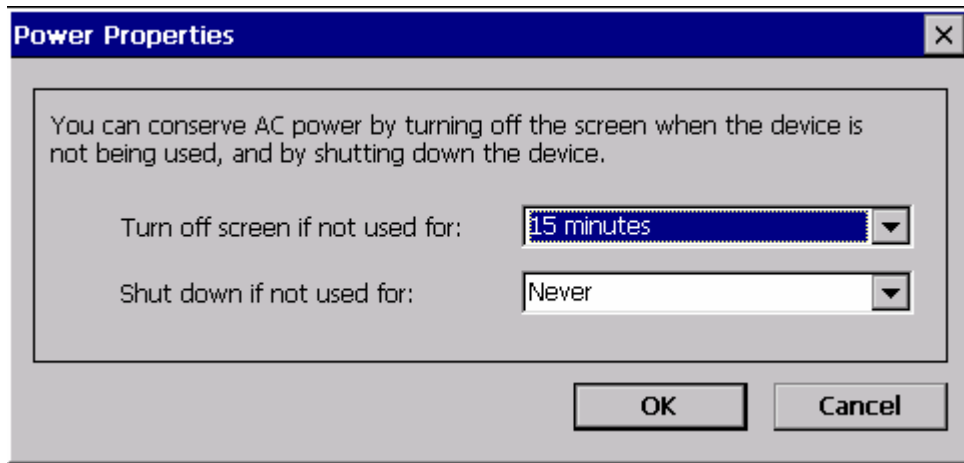


You can also press the change button to select a select a different connection.



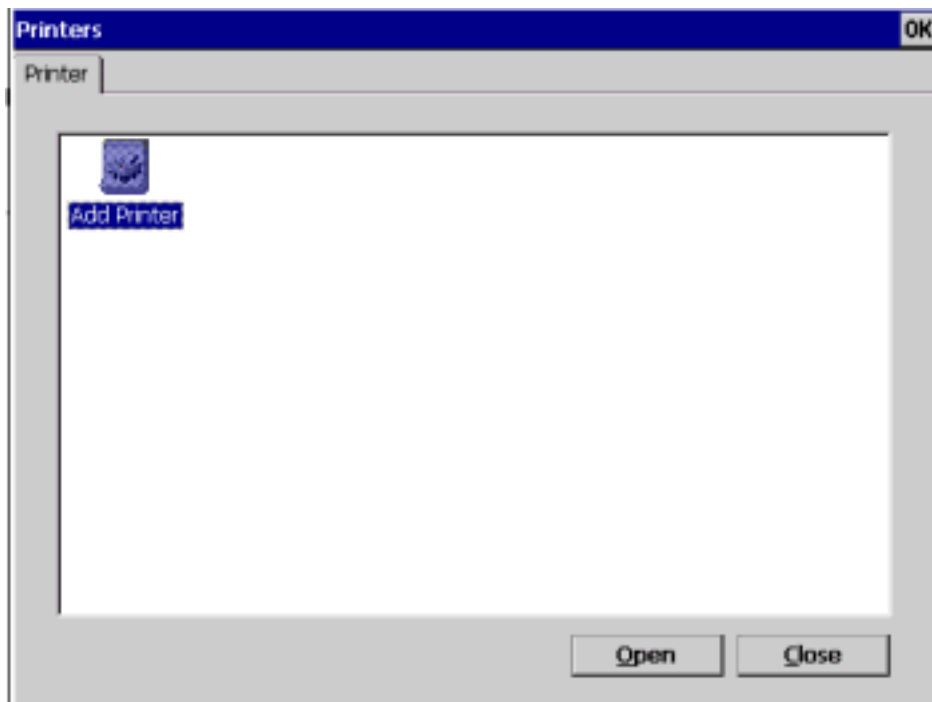
## The Power Control Panel

Set the idle time for before turning off the screen or shutting the device down when not in use.



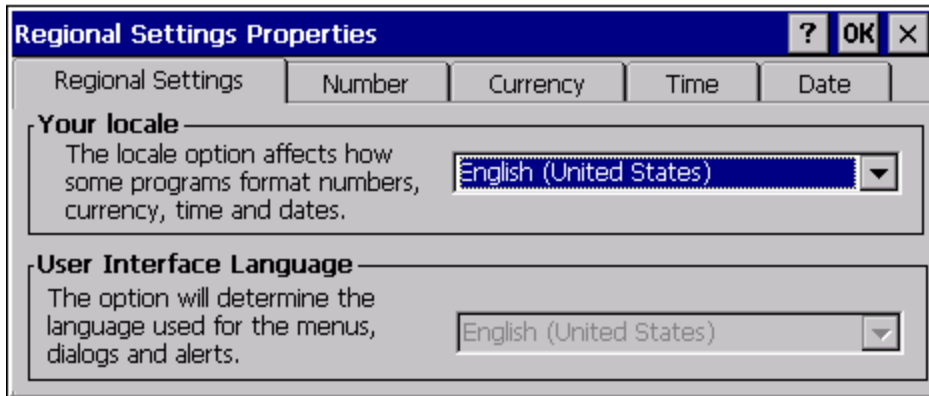
## The Printers Control Panel

Double-click the **Add Printer** icon to add a local printer from the Setup Wizard windows.



## The Regional Settings Control Panel

Allows you to set the locale affecting how some programs format numbers, currency, dates and time. After you select a locale that the characteristics will be determined.



## The RDP Connection Control Panel

### Display

Select a color resolution your device supports.

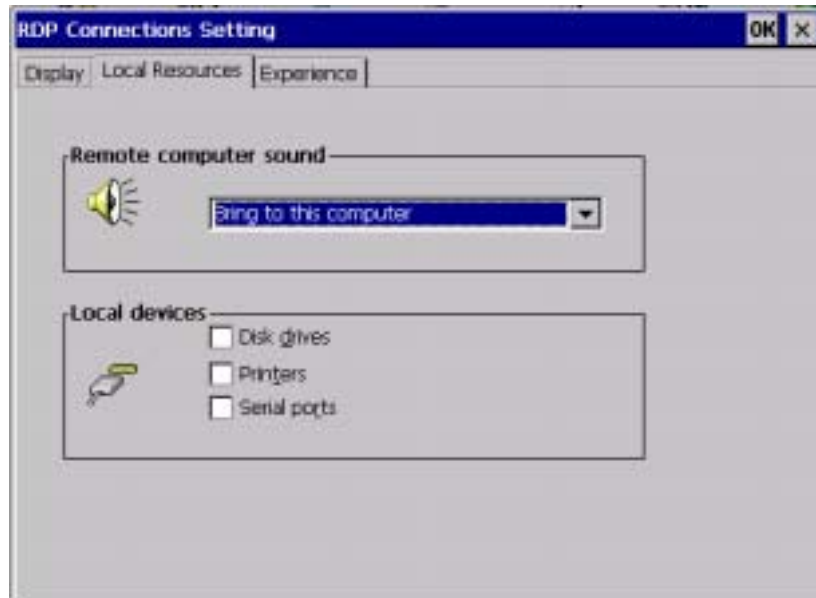


### Local Resources TAB

The **Local Resources** tab, allow you to change the remote computer sound and local devices settings.

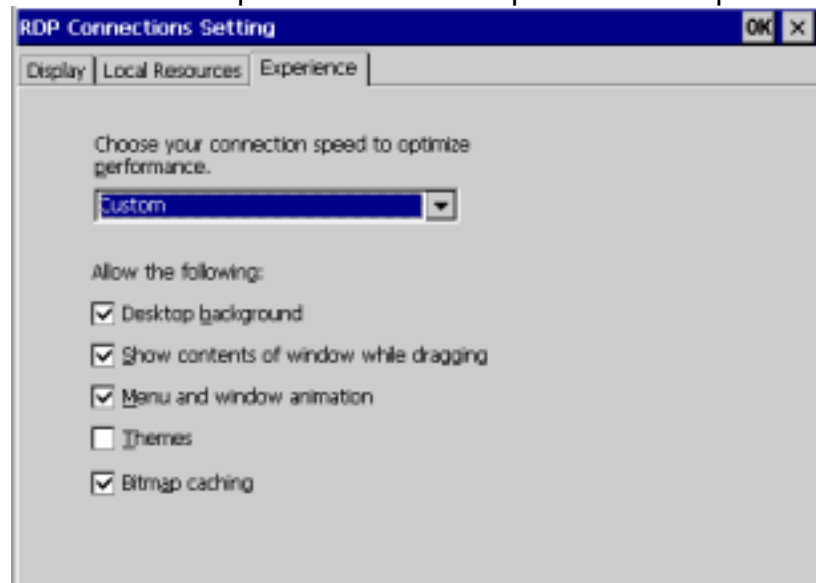
In the **Remote Computer Sound** drop-down menu, you can either bring sound to this computer or leave it at remote computer.

(Connects automatically to select local devices when logged on to the remote computer.)



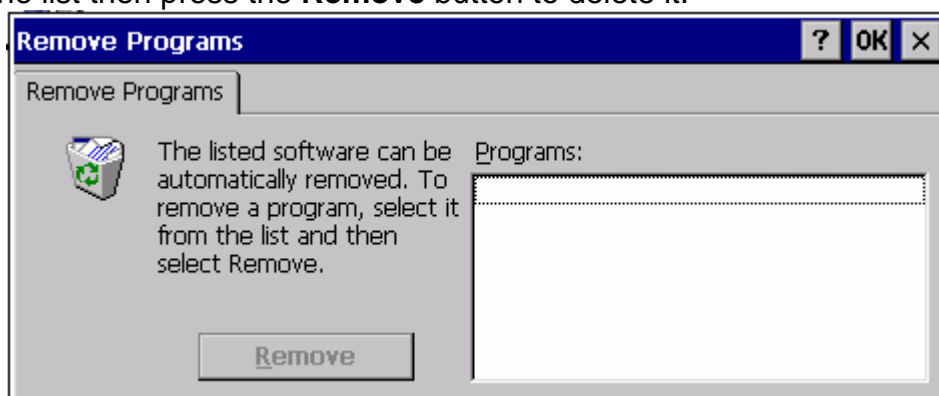
### Experience TAB

Choose a **Modem**, **BroadBand**, **Lan** or **Custom** connection mode from the drag-down menu. Click the check box to optimize connection performance speed.



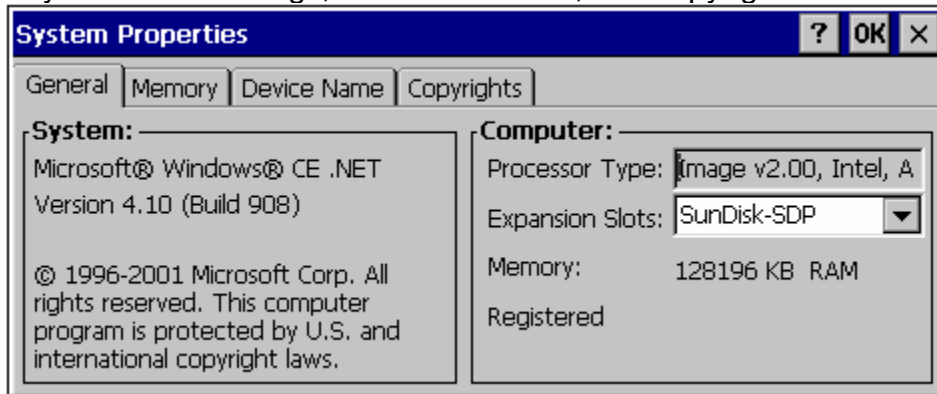
### The Remove Programs Control Panel

Any installed program, that will be listed on this window. Select a program that you want to remove from the list then press the **Remove** button to delete it.



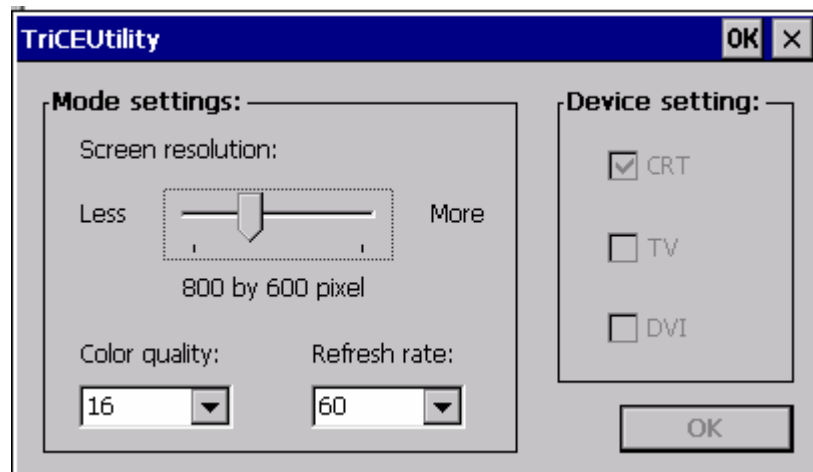
## The System Control Panel

**System Properties** allows you to view your device's software and hardware, system information adjust the memory allocation settings, the device name, and copyrights.



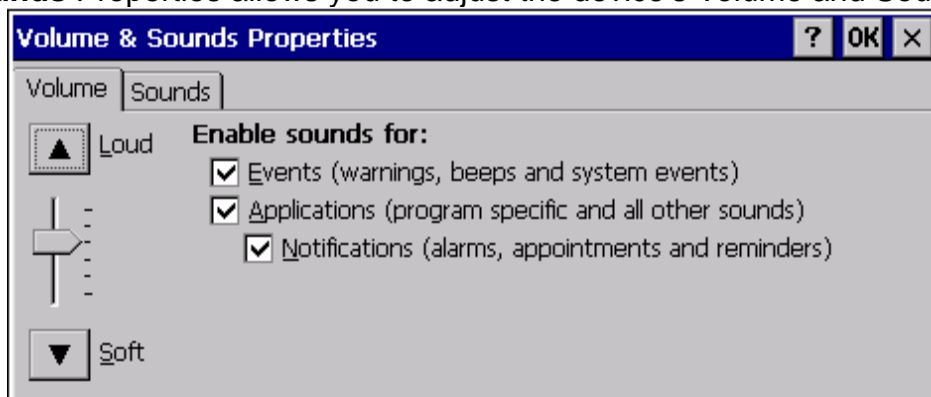
## The TriCEutility Control Panel

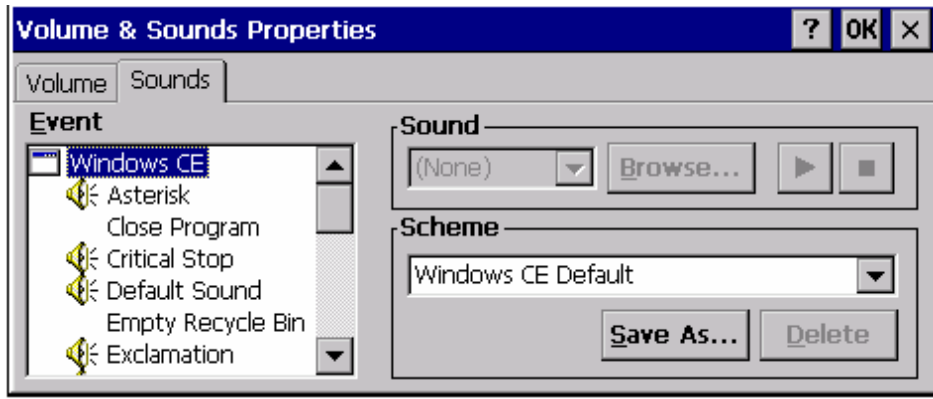
Sets simultaneous display for TV, CRT and DVI screen, screen resolution, color quality, and refresh rate.



## The Volume & Sounds Control Panel

**Volume & Sounds Properties** allows you to adjust the device's Volume and Sounds settings.







# Other Information

## Specifications

<b>CPU</b>	Vendor: National SC 1100 200-300 MHz processor.
<b>Memory</b>	1 SODIMM x 128MB or 64MB 32MB or 64MB CF
<b>Display</b>	Trident CyberBlade XP graphics card Sigma Design Em8476 MPEG DECODE 16 bit high color with 1024*768 resolution
<b>Networking</b>	Wireless LAN driver TCP/IP with DNS and DHCP 10/100-TX Ethernet, twisted pair (RJ-45), Wake-on-LAN ready Point to Point Protocol (PPP)
<b>I/O Ports</b>	One DC-in One DVI One VGA out One Ethernet 10/100 (RJ-45) 4 x USB (type-A) One USB (type-B) for disaster recovery One Microphone-input One Headphone output One Audio-out Wireless 802.11x in Mini-PCI socket (On SC300)
<b>Power Adapter</b>	Input: 100-240V / 50~60Hz Output: +12V DC
<b>Dimensions</b>	118 x 243 x 209 mm (WxHxD)
<b>Weight</b>	1.5 kgs (main unit)
<b>Safety Regulation</b>	FCC-B, TUV/GS, CE-Mark, cUL, UL, CB report, C-Tick, BSMI, CCC, <b>NOM, PSB, GOST</b>
<b>Standard Accessories</b>	Main unit Power supply & US power cable Quick start card Patch antenna bundle optional USB type keyboard & mouse

# Troubleshooting

If you are experiencing trouble with the NexTVision N210, refer to the problems and solutions listed here. If the problem persists, please contact our service center before contacting your local dealer.

## Common Problems / Frequently Asked Questions

### Problem: No power

- Make sure power button (or switch) is ON.
- Make sure A/C power cord is securely connected to the DC power supply and the power supply is firmly connected to the device.
- Plug another electrical device (such as a radio) into the power outlet to verify that the outlet is supplying proper voltage.

### Problem: Power is ON but no screen image

- Make sure the video cable supplied with the Display is tightly secured to the video output port on the back of the computer. If the other end of the video cable is not attached permanently to the Display, tightly secure it to the NexTVision display.
- Adjust brightness and contrast of monitor.

### Problem: Control buttons do not work

- Press only one button at a time.

### Problem: The device cannot be turned on.

Check that all I/O and power connectors are correctly and securely connected as described in the installation section.

Make sure the pins of the connectors are not bent or broken.

### Problem: LAN function cannot be started.

Ensure that the cable is securely connected to the network RJ-45 connector and that the other end of the cable is also securely connected to its correct device. Make sure the link LEDs do light when the cable is well connected.

Contact your system administrator.

### Problem: Network server cannot be logged on.

Ensure that the required network settings have been entered properly.

Contact your system administrator.

### Question: How to upgrade image?

For upgrade image, please follow the instructions:

1. Enter the "Control Panel" window.
2. Enter "Management Tools". (you may see two pages in this window)
3. Choose "Upgrade" page
4. Fill in the data:
  - (1) Server Name:
  - (2) Path\File:
  - (3) User Name:
  - (4) Password:

Refer to **page 21 FTP upgrade** for more details.

## Customer Support

For technical support or product service, see the table below or contact your reseller.

**NOTE:** You will need the product serial number.

<b>Country/ Region</b>	<b>Web site</b>	<b>T = Telephone F = FAX</b>	<b>Email</b>
United States	viewsonic.com/ support	<b>T:</b> (800) 688-6688 <b>F:</b> (909) 468-1202	service.us@viewsonic.com
Canada	viewsonic.com/ support	<b>T:</b> (800) 688-6688 <b>F:</b> (909) 468-1202	service.ca@viewsonic.com
United Kingdom	viewsoniceurope.com	<b>T:</b> 0800 833 648 <b>F:</b> (01293) 643910	service.eu@viewsoniceurope.com
Europe, Middle, East, Baltic, countries, and North Africa	viewsoniceurope.com	Contact your reseller	service.eu@viewsoniceurope.com
Australia and New Zealand	viewsonic.com.au	<b>T:</b> +61 2 9929 3955 <b>F:</b> +61 2 9929 8393	service.au@viewsonic.com
Singapore/India and Southeast Asia	viewsonic.com.sg	<b>T:</b> 65 273 4018 <b>F:</b> 65 273 1566	service.sg@viewsonic.com
Other Asia/Pacific countries	viewsonic.com.tw	<b>T:</b> 886 2 2246 3456 <b>F:</b> 886 2 8242 3668	service.ap@viewsonic.com
South Africa	viewsonic.com/asia	<b>T:</b> 886 2 2246 3456 <b>F:</b> 886 2 8242 3668	service.ap@viewsonic.com

## **Cleaning the Case**

- MAKE SURE THE NexTVision N210 IS TURNED OFF.
- NEVER SPRAY OR POUR ANY LIQUID DIRECTLY ONTO THE CASE.

### **To clean the case:**

1. Use a soft, dry cloth.
2. If still not clean, apply a small amount of a non-ammonia, non-alcohol based, mild non-abrasive detergent onto a clean, soft, lint-free cloth, then wipe the surface.

### **Disclaimer**

ViewSonic does not recommend the use of any ammonia-based or alcohol-based cleaners on the case. Some chemical cleaners have been reported to damage the case. ViewSonic will not be liable for damage resulting from use of any ammonia-based or alcohol-based cleaners.

# Limited Warranty

## VIEWSONIC Video Process Box

### What the warranty covers:

**ViewSonic** warrants its products to be free from defects in material and workmanship during the warranty period. If a product proves to be defective in material or workmanship during the warranty period, **ViewSonic** will, at its sole option, repair or replace the product with a like product. Replacement product or parts may include remanufactured or refurbished parts or components.

### How long the warranty is effective:

**ViewSonic**® LCD displays are warranted for one (1) year for all parts including the light source and one (1) year for all labor from the date of the first consumer purchase.

### Who the warranty protects:

This warranty is valid only for the first consumer purchaser.

### What the warranty does not cover:

1. Any product on which the serial number has been defaced, modified or removed.
2. Damage, deterioration or malfunction resulting from:
  - a. Accident, misuse, neglect, fire, water, lightning, or other acts of nature, unauthorized product modification, or failure to follow instructions supplied with the product.
  - b. Repair or attempted repair by anyone not authorized by **ViewSonic**.
  - c. Any damage of the product due to shipment.
  - d. Removal or installation of the product.
  - e. Causes external to the product, such as electrical power fluctuations or failure.
  - f. Use of supplies or parts not meeting **ViewSonic**'s specifications.
  - g. Normal wear and tear.
  - h. Any other cause which does not relate to a product defect.
3. Removal, installation, and set-up service charges.

### How to get service:

1. For information about receiving service under warranty, contact **ViewSonic Customer Support**. You will need to provide your product's serial number.
2. To obtain service under warranty, you will be required to provide (a) the original dated sales slip, your name, (c) your address, (d) a description of the problem, and (e) the serial number of the product.
3. Take or ship the product freight prepaid in the original container to an authorized **ViewSonic** service center or **ViewSonic**.
4. For additional information or the name of the nearest **ViewSonic** service center, contact **ViewSonic**.

### Limitation of implied warranties:

THERE ARE NO WARRANTIES, EXPRESS OR IMPLIED, WHICH EXTEND BEYOND THE DESCRIPTION CONTAINED HEREIN INCLUDING THE IMPLIED WARRANTY OF MERCHANTABILITY AND FITNESS FOR A PARTICULAR PURPOSE.

### Exclusion of damages:

VIEWSONIC'S LIABILITY IS LIMITED TO THE COST OF REPAIR OR REPLACEMENT OF THE PRODUCT. VIEWSONIC SHALL NOT BE LIABLE FOR:

1. DAMAGE TO OTHER PROPERTY CAUSED BY ANY DEFECTS IN THE PRODUCT, DAMAGES BASED UPON INCONVENIENCE, LOSS OF USE OF THE PRODUCT, LOSS OF TIME, LOSS OF PROFITS, LOSS OF BUSINESS OPPORTUNITY, LOSS OF GOODWILL, INTERFERENCE WITH BUSINESS RELATIONSHIPS, OR OTHER COMMERCIAL LOSS, EVEN IF ADVISED OF THE POSSIBILITY OF SUCH DAMAGES.
2. ANY OTHER DAMAGES, WHETHER INCIDENTAL, CONSEQUENTIAL OR OTHERWISE.
3. ANY CLAIM AGAINST THE CUSTOMER BY ANY OTHER PARTY.

### Effect of state law:

This warranty gives you specific legal rights, and you may also have other rights which vary from state to state. Some states do not allow limitations on implied warranties and/or do not allow the exclusion of incidental or consequential damages, so the above limitations and exclusions may not apply to you.

### Sales outside the U.S.A. and Canada:

For warranty information and service on **ViewSonic** products sold outside of the U.S.A. and Canada, contact **ViewSonic** or your local **ViewSonic** dealer.  
ViewSonic LCD MM Warranty (V1.0) Release Date: 12-17-2002

# Appendix

## Safety Guidelines

**Warning:** This device must be operated with the original power supply, part number: SA150A-1240V-3

**CAUTION:** Danger of explosion if battery is incorrectly replaced. Replace only with same or equivalent type recommended by the manufacturer. Discard used batteries according to manufacturer's instructions.

**CAUTION:** The socket-outlet should be installed near the equipment and should be easily accessible.

**CAUTION:** Use a power cable that is properly grounded. Always use the appropriate AC cord that is certified for the individual country. Some examples are listed below:

USA.....UL                      Switzerland ..... SEV  
Canada.....CSA                 Britain ..... BASE/BS  
Germany.....VDE                Japan ..... Electric Appliance Control Act

### IMPORTANT NOTICE CONCERNING POWER CORD SELECTION

The power cord set for this unit has been enclosed and has been selected according to the country of destination and must be used to prevent electric shock. Use the following guidelines if it is necessary to replace the original cord set, or if the cord set is not enclosed.

The female receptacle of the cord set must meet IEC-60320 requirements and may look like (Figure A1 below):



### For the United States and Canada

In the United States and Canada the male plug is a NEMA5-15 style (Figure A2), UL Listed, and CSA Labeled. For units which are mounted on a desk or table, type SVT or SJT cord sets may be used. For units which sit on the floor, only SJT type cord sets may be used. The cord set must be selected according to the current rating for your unit. Please consult the table below for the selection criteria for power cords used in the United States and Canada.

Cord Type	Size of Conductors in Cord	Maximum Current Rating of Unit
SJT	18 AWG	10 Amps
	16 AWG	12 Amps
	14 AWG	12 Amps
SVT	18 AWG	10 Amps
	17 AWG	12 Amps

### For European Countries

In Europe you must use a cord set which is appropriate for the receptacles in your country. The cord set is HARCertified, and a special mark that will appear on the outer sheath, or on the insulation of one of the inner conductors.

#### AC PLUG CORD PRECAUTIONS FOR THE UNITED KINGDOM

FOR YOUR SAFETY PLEASE READ THE FOLLOWING TEXT CAREFULLY.

IF THE FITTED MOULDED PLUG IS UNSUITABLE FOR THE SOCKET OUTLET THEN THE PLUG SHOULD BE CUT OFF AND DISPOSED OF SAFELY.

THERE IS A DANGER OF SEVERE ELECTRICAL SHOCK IF THE CUT OFF PLUG IS INSERTED INTO AN APPROPRIATE SOCKET.

If a new plug is to be fitted, please observe the wiring code as shown below.

If in any doubt, please consult a qualified electrician.

**WARNING: THIS APPLIANCE MUST BE EARTHED.**

**IMPORTANT:** The wires in this mains lead are coloured in accordance with the following code:

Green-and-Yellow: Earth  
Blue: Neutral  
Brown: Live

If the coloured wires of the mains lead of this appliance do not correspond with the coloured markings identifying the terminals in your plug, proceed as follows:

The wire which is coloured GREEN-AND-YELLOW must be connected to the terminal in the plug which is marked by the letter E or by the Earth symbol or coloured GREEN or GREEN-AND-YELLOW.

The wire which is coloured BLUE must be connected to the terminal in the plug which is marked with the letter N or coloured BLACK. The wire which is coloured BROWN must be connected to the terminal in the plug which is marked with the letter L or coloured RED.

If you have any questions concerning which proper power cord to use, please consult with the dealer from whom you have purchased the product.

## Compliance Information for U.S.A.

This equipment has been tested and found to comply with the limits for a Class B digital device, pursuant to part 15 of the FCC Rules. These limits are designed to provide reasonable protection against harmful interference in a residential installation. This equipment generates, uses, and can radiate radio frequency energy, and if not installed and used in accordance with the instructions, may cause harmful interference to radio communications. However, there is no guarantee that interference will not occur in a particular installation. If this equipment does cause harmful interference to radio or television reception, which can be determined by turning the equipment off and on, the user is encouraged to try to correct the interference by one or more of the following measures:

- Reorient or relocate the receiving antenna.
- Increase the separation between the equipment and receiver.
- Connect the equipment into an outlet on a circuit different from that to which the receiver is connected.
- Consult the dealer or an experienced radio/TV technician for help.

#### FCC Warning

To assure continued FCC compliance, the user must use grounded power supply cord and the provided shielded video interface cable with bonded ferrite cores. If a BNC cable is going to be used, use only a shielded BNC(5) cable. Also, any unauthorized changes or modifications not expressly approved by the party responsible for compliance could void the user's authority to operate this device.

## CE Conformity for Europe



The device complies with the requirements of the EEC directive 89/336/EEC as amended by 92/31/EEC and 93/68/EEC Art.5 with regard to "Electromagnetic compatibility," and 73/23/EEC as amended by 93/68/EEC Art.13 with regard to "Safety."



**ViewSonic Corporation**